



Table of Contents

SAFETY III - This PDF Download was downloaded from SatelliteGuys.US

PORTABLE MEDIA PLAYER 1

GETTING STARTED 5

DISH NETWORK AUDIO/VIDEO 15

SECOND SOURCE AUDIO/VIDEO 21

THE PHOTO ALBUM 33

THE AUDIOCORDER 41

THE BROWSER 47

SYSTEM SETUP 53

TROUBLESHOOTING 61


APPENDIX A-1





Important Safety Precautions

SAFETY CONVENTIONS

Throughout this user guide, there may be blocks of text indicated by symbols and printed in a different way than the surrounding text. These blocks of text require the attention of the reader to avoid hazardous situations. The hazard levels are indicated as:


-  This warning indicates a hazardous situation which, if not avoided, could result in serious injury.

-  This caution indicates a situation which, if not avoided, could damage the equipment or other properties.

-  This note indicates additional information to make you aware of possible problems and information of any importance to help you to understand, to use and to maintain the PocketDISH.

BATTERY SAFETY

Your PocketDISH has a rechargeable Lithium Ion (Li-Ion) battery.

-
-  The Li-Ion battery is a high capacity power source.
For your safety:
 - To charge the Li-Ion battery, only use the AC/DC adapter that came with the PocketDISH
 - Never leave the PocketDISH in a hot environment like your car. Ambient temperature may not exceed 140F/60C.Failing to do so can cause permanent damage to equipment and can result in serious personal injury.
-


GENERAL SAFETY

- 1 Carefully read and understand the warranty terms in the back of this manual.
- 2 Heed all warnings and follow all instructions.
- 3 Do not use this product near water or in extreme cold.
- 4 Clean only with a dry cloth.
- 5 Do not install near any heat sources such as radiators, heat registers, stoves, or other equipment (including amplifiers) that produce heat.
- 6 Protect the power cord from being walked on or pinched, particularly at plugs, convenience receptacle, and the point where they exit from this product.
- 7 Use only attachments/accessories specified by the manufacturer.
- 8 Disconnect the AC/DC adapter from the power during lightning storms or when unused for long periods of time.
- 9 To help avoid possible damage to the PocketDISH electronics, do not expose the PocketDISH to excessive vibration or any magnetic objects, such as speakers, electric motors, transformers, etc.
- 10 Refer all servicing to qualified service personnel. Servicing is required when this product or its accessories have been damaged in any way, such as the power cord or plug is damaged, liquid has been spilled or objects have fallen into the product, the product has been exposed to rain, or to moisture, does not operate normally, or has been dropped.




Do not expose the AC/DC adapter to rain or excessive moisture to avoid the risk of shock or permanent damage.


AVOID HEARING DAMAGE

-  Your PocketDISH respects the current regulations for limiting the output volume of consumer audio devices to a safe level while using the headphones that came with the PocketDISH. Permanent damage to your ears will occur if headphones or ear buds are used at a high volume level. Over time you might get used to a higher volume level that may sound normal, but the risk of permanent damage to your ears is still present. Set the volume level of your PocketDISH to a safe level before permanent damage to your ears has occurred. If you start to hear ringing in your ears, reduce the volume level or stop using the headphones or ear buds.
-

SAFE USE

-  Do not use headphones or ear buds while you drive. The use of headphones or ear buds can be disruptive or distracting when you have to pay attention. Therefore the use of headphones or ear buds is not recommended while you drive or even if you are just a pedestrian. Please note that in some areas the use of headphones or ear buds is considered to be illegal.
-

SAFE DISPOSAL

-  Your PocketDISH has a rechargeable Lithium Ion (Li-Ion) battery. Dispose of the PocketDISH and its batteries in accordance with local regulations. Make sure the Li-Ion battery is fully discharged before disposal to avoid the possibility of a short-induced fire after disposal.
-



About Your PocketDISH

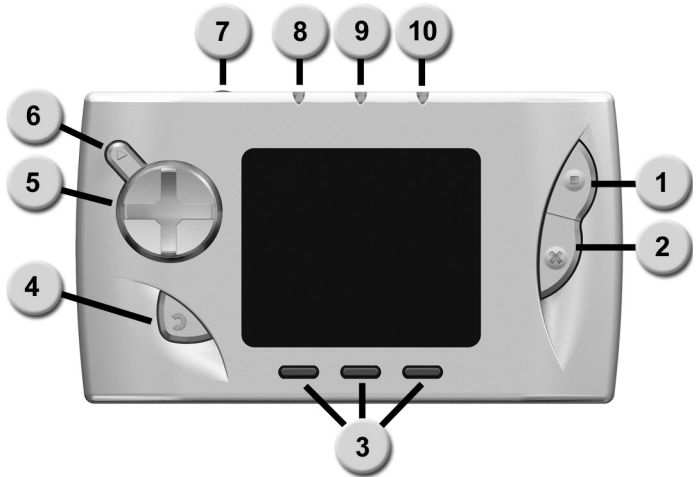
This chapter gives you an overview and a description of your Portable Media Player.

- **OVERVIEW**
- **CONTROLS AND INDICATORS**
- **CONNECTORS**

OVERVIEW

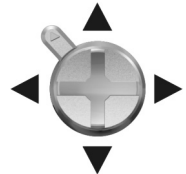
Features include the following:

- Video Player:
DISH Network content and MPEG-4.
- Music Recorder & Player:
DISH Network content, MP3, WMA and WAV.
- Photo Viewer/Slideshow:
JPG, JPEG, BMP.
- Games Console:
Mophun 2D/3D Games.
- Built-in Help:
Additional on-screen information.
- Built-in Hard Drive:
USB Mass Storage Device for any file type.



CONTROLS AND INDICATORS

- 1 Control 1: can function as a Play, Pause, Enter or Game Control key.
- 2 Control 2: can function as a Stop, Escape Exit or Game Control key.
- 3 Function keys 1, 2, 3: to access the selection menus as displayed on-screen. The function menu displays once you press one of the Function keys momentarily. When pressed for at least three seconds:
 - Function key 1 is also used as a general key lock.
 - Function key 2 is also used to select either the PocketDISH screen or TV.
- 4 OFF: press and hold to turn off PocketDISH.
Stop: stops playback of a file.
Escape: quits a selection without saving.
Exit: exits a game.
- 5 ◀ ▶ : moves the cursor left or right.
Previous, Next, select previous/next file or advance or reverse quickly through a file.
▲ ▼ : moves the cursor up or down or to set the volume (+/-).
- 6 ON: press and hold to turn on PocketDISH.
Play: starts the playback of a file.
Pause: pauses the playback of a file.
Enter: to acknowledge a selection.
- 7 Microphone: to make digital (voice) recordings.
- 8 HDD: indicates that the hard drive is active.
- 9 ON: indicates that the PocketDISH is turned on.
- 10 CHG: a solid light indicates the PocketDISH is connected to the battery charger. If charging is complete, the light flashes.



CONNECTORS

☞ The USB Host and Device connector types used on the PocketDISH are: USB Mini Type A (USB-A) and USB Mini Type B (USB-B)



USB-A (Host): connect USB (mass storage device) compatible equipment, like a camcorder, digital photo camera or a USB flash drive.



USB-B (Device): connect to a DISH Network DVR or computer.



Power (DC IN): connect to the AC/DC power adapter that came with the PocketDISH.



Headphones/AV: connect to the headphones that came with the PocketDISH or connect an audio or video device using the analog A/V cable.



Multi-connection: install the multi-connector for use with other multimedia devices or connect to the Archos FM Radio & Remote Control (not included).



Multi-connector:

- AV out: connect a TV or audio device with the analog A/V cable that came with the PocketDISH.
- Line in: connect to an audio device for use with the AudioCorder.



Use this information to get started and connect your PocketDISH to other devices.

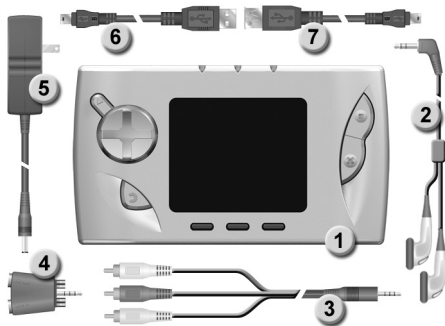
- **UNPACK THE POCKETDISH**
- **FIRST TIME USE**
- **BASIC OPERATION**
- **CONNECT A DISH NETWORK DVR**
- **CONNECT A COMPUTER**
- **CONNECT A TV**
- **CONNECT AN AUDIO DEVICE**
- **CONNECT A USB MASS STORAGE DEVICE**
- **MAIN MENU STRUCTURE**

UNPACK THE POCKETDISH

! Keep the plastic packaging away from children. The plastic packaging may cling to the nose and mouth and cause suffocation.

! Keep the packaging materials for a period of time. In case of warranty claims, return the PocketDISH in the original packaging to protect the electronics. Failing to do so might void the warranty.

Carefully unpack the contents of the box and confirm that all the parts are included. Examine all parts for damage that may have occurred during shipment. If you find any damage, stop unpacking the box and contact the store where you bought the PocketDISH.



CONTENTS OF THE BOX

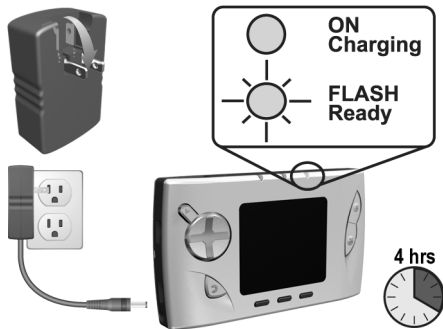
- 1 PocketDISH
- 2 Headphones
- 3 Analog AV (audio/video) cable
red = right (R), white = left (L), yellow = video
- 4 Multi-connector
- 5 AC/DC adapter
- 6 USB cable
- 7 USB adapter cable
- 8 Documentation (not shown)

FIRST TIME USE


Your PocketDISH has a rechargeable Li-Ion battery. Before first use, charge the battery according to the following instructions.

! The Li-Ion battery is a high capacity power source. Do not use another battery charger or AC/DC adapter. For your safety, charge the Li-Ion battery only with the AC/DC adapter that came with the PocketDISH. Failing to do so can cause permanent damage to equipment and can result in serious personal injury.

- 1 On the PocketDISH, install the DC plug into the DC IN power socket.
- 2 On the AC/DC adapter, flip down the pins.
- 3 Insert the AC plug into a 110Vac/60Hz wall socket (power).
- 4 On the PocketDISH, note that the CHG indicator comes on.
- 5 Wait until the CHG indicator starts to flash. This can take up to 4 hours. Now the battery is charged and the PocketDISH is ready for use.
- 6 Remove the AC plug from the 110Vac/60Hz wall socket.
- 7 Remove the DC plug from the DC IN power socket.



BASIC OPERATION

-  The PocketDISH has a battery saver which shuts down the display or the entire PocketDISH after a certain period of time. You can change these settings in the Setup - Power menu. Note that any change will influence battery power life span.

ON

- 1 Press the ON key for at least four seconds.
- 2 The ON indicator comes on.
- 3 Allow the PocketDISH time for the desktop to display.
- 4 If the PocketDISH does not start up or shuts down immediately, use the AC/DC adapter to power the PocketDISH and charge the battery.

OFF

- 1 Press the OFF key for at least four seconds.
- 2 The shut down screen displays.
- 3 Allow the PocketDISH time to shut down.
- 4 Connect the AC/DC adapter as described to make sure that the battery stays charged and ready for use.

BASIC NAVIGATION

- 1 Use the ◀ ▶ ▲ ▼ keys to navigate.
- 2 Press ON to access a feature.
- 3 Press OFF to exit a feature.



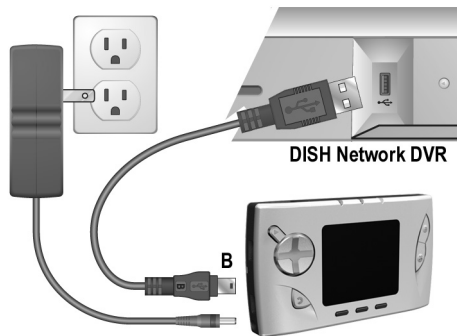
POWER SETTINGS - BATTERY SAVING

- 1 Highlight the Setup icon and press ON.
- 2 Use the ◀ ▶ ▲ ▼ keys to highlight the Power icon and press ON.
- 3 Use the ▲ ▼ keys to navigate through the Battery and DC-power operation settings for Power Off, Backlight Off and Hard Drive.
- 4 Use the ◀ ▶ keys to change the setting.
- 5 Press OFF to activate the settings and exit the menu.

CONNECT A DISH NETWORK DVR

☞ When connected to an external device, the PocketDISH uses more power than normal. Therefore, connect the PocketDISH to power to prevent an unwanted shutdown.

- 1 Connect the PocketDISH to power.
- 2 Turn the DVR and the PocketDISH on.
- 3 On the DVR, locate the USB port and connect the USB cable.
- 4 On the PocketDISH, locate the USB-B port and connect the USB cable.
- 5 On the DVR, the USB connection pop-up displays.
- 6 On the PocketDISH, the "USB cable attached" pop-up displays. The PocketDISH keys are temporarily disabled.
- 7 Now you can send the selected files from the DVR to the PocketDISH or manage the content on the PocketDISH via the DVR.
- 8 Using the DISH Network remote control:
 - a Highlight Add and press SELECT if you want to send DISH Network content to the PocketDISH.
 - b Highlight Manage and press SELECT if you want to view or delete content on the PocketDISH.



CONNECT A COMPUTER

☞ When connected to an external device, the PocketDISH uses more power than normal. Therefore, connect the PocketDISH to power to prevent an unwanted shutdown.

☞ The PocketDISH is compatible with Windows ME/2000/XP and Mac OS 10.2.4 or higher. Note that on some Windows versions the PocketDISH displays in the Windows Explorer as a Removable Disk.

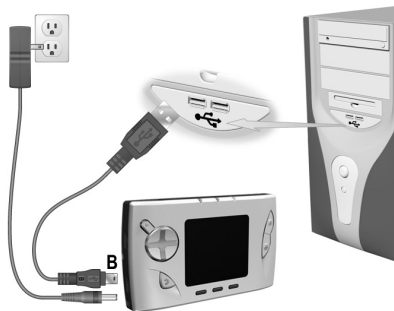
- 1 Connect the PocketDISH to power.
- 2 Turn the computer and the PocketDISH on.
- 3 On the computer:
 - a Close all programs.
 - b Locate the USB port and connect the USB cable.
- 4 On the PocketDISH:
 - a Locate the USB-B port and connect the USB cable.
 - b Now the "USB cable attached" pop-up displays.
 - c The PocketDISH keys are temporarily disabled.

WINDOWS PC

- 5 Open Windows Explorer and locate the PocketDISH drive.
- 6 Double click the PocketDISH drive to get full access to its hard drive as if you are working on your PC.

MAC

- 5 On the desktop, locate the PocketDISH icon.
- 6 Double click the PocketDISH icon to get full access to its hard drive as if you are working on your Mac.



CONNECT A TV

☞ When connected to an external device, the PocketDISH uses more power than normal. Therefore, connect the PocketDISH to power to prevent an unwanted shutdown.

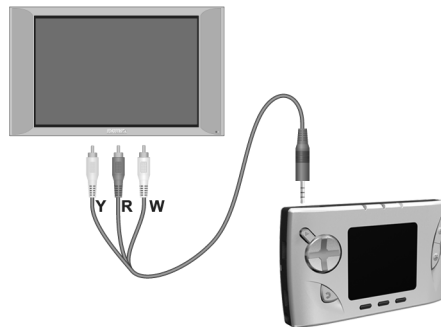
- 1 Connect the PocketDISH to power.
- 2 Turn the PocketDISH on.

PLAYBACK

- 3 Install the analog AV-cable directly in the AV connection (center jack) of the PocketDISH.
- 4 On your TV, locate the red (R), white (L) and yellow (video) RCA connectors (In).
- 5 Connect the RCA connectors of the analog AV cable. Match the colors with the applicable connectors on your TV.
- 6 Press Function key 2 for at least three seconds to toggle between LCD and TV.

RECORDING

This model is not designed for recording video but you can send video to the PocketDISH from either a compatible DISH Network DVR or a computer using the USB cable that came with the PocketDISH.



(Y): YELLOW CONNECTOR TO VIDEO
(R): RED CONNECTOR TO AUDIO RIGHT
(W): WHITE CONNECTOR TO AUDIO LEFT

CONNECT AN AUDIO DEVICE

☞ When connected to an external device, the PocketDISH uses more power than normal. Therefore, connect the PocketDISH to power to prevent an unwanted shutdown.

1 Connect the PocketDISH to power.

2 Turn the PocketDISH on.

RECORDING (AUDIOCORDER)

3 Install the multi-connector on the PocketDISH.

4 Install the analog AV-cable into the Line in connection of the multi-connector.

5 On your audio device, locate the red (R) and white (L) RCA connectors (Out).

6 Connect the RCA connectors of the analog AV cable. Match the colors with the applicable connectors on your audio device.

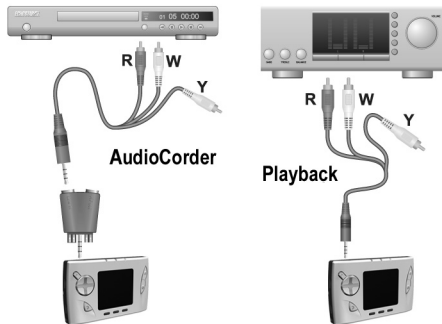
7 Do not install the yellow (video) connector.

PLAYBACK

3 Install the analog AV-cable directly in the AV connection (center jack) of the PocketDISH.

4 On your audio device, locate the red (R) and white (L) RCA connectors (In).

5 Connect the RCA connectors of the analog AV cable. Match the colors with the applicable connectors on your audio device.



(Y): YELLOW CONNECTOR - NOT USED

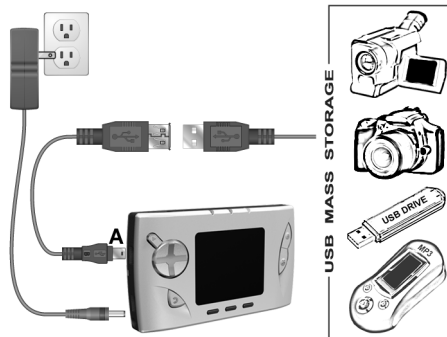
(R): RED CONNECTOR TO AUDIO RIGHT

(W): WHITE CONNECTOR TO AUDIO LEFT


CONNECT A USB MASS STORAGE DEVICE

- ☞ A USB mass storage device is a digital multimedia device that can communicate with another multimedia device. For example, connecting to a computer without the need to install additional software.
- ☞ Consult the user's guide that came with your USB flash drive, MP3 player, digital photo or video camera if it is compliant with the USB mass storage device protocol. If yes, the PocketDISH can get the files from it.

- 1 Connect the PocketDISH to power.
- 2 Turn the PocketDISH and the USB device on.
- 3 Connect the USB adapter cable to the USB cable.
- 4 On the USB device, locate the USB port and connect the USB cable.
- 5 On the PocketDISH, locate the USB-A port and connect the USB adapter cable.
- 6 Allow the two devices a few moments to recognize each other.
- 7 On the PocketDISH:
 - a The "USB device connected - Please wait ..." pop-up displays.
 - b Wait until the browser screen displays.
 - c Now you can transfer files from the USB device to the PocketDISH.



MAIN MENU STRUCTURE

 Some menus have sub-menus which may be displayed at the bottom of your screen. With the Function keys, depending on the menu, you can access additional file info, delete or rename a file, hide/show thumbnails, start a recording manually or create another folder to organize your files.

The operation of your PocketDISH is done via options and setup menus. The options and setup menus shown on the desktop (which appears directly after power up) are:



Video: the folder that holds the video files.



Music: access the ARCLibrary that holds the folders for the audio files.



Photo: the folder that holds the digital photos and images.



Resume: continue from the last played audio or video file.



Browser: displays all folders and playlists on the hard drive.



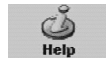
Setup: access the installation menu to personalize the system settings. You can modify the Sound, PlayMode, Clock, Display, Power, Rating locks and System settings.



Games: access the game console.



AudioCorder: access the audio recorder (microphone).



Help: access the on-screen help.




Transfer and Playback

This chapter helps you learn how to send and playback DISH Network audio and video recordings.

- **INTRODUCTION**
- **SEND MY RECORDINGS FROM THE DISH NETWORK DVR**
- **PLAYBACK THE DISH NETWORK RECORDINGS**

INTRODUCTION

 For the recordings available in the "My Recordings" list of the DISH Network DVR, it is only possible to send content from this list to the PocketDISH, and not vice-versa.

It is possible to send your recorded programs from your compatible DISH Network DVR onto the PocketDISH when connected with the USB cable. Please note that recorded content from the DISH Network audio channels will also appear in the Video folder of the PocketDISH.

After you connect the PocketDISH to your compatible DISH Network DVR, a pop-up message displays that asks you what you want to do: Manage or Add the PocketDISH content.

If you select the Add option, you can access the "My Recordings" list of the DVR, which is where you can send files to the PocketDISH.

When connected, you can access the PocketDISH content from the DISH Network DVR's Multimedia option in the Main Menu.

SEND MY RECORDINGS FROM THE DISH NETWORK DVR

- 1 Use the USB cable to connect the PocketDISH to the DISH Network DVR.
- 2 On the DVR's PocketDISH pop-up, select Add. The "My Recordings" list displays.
- 3 On the DVR's remote control, use UP and DOWN ARROW and SELECT to choose the recordings that you want to send to your PocketDISH. Before each selected event, a mark in the check box displays.
- 4 Press RIGHT ARROW to highlight Send Video and press SELECT.
- 5 On the TV, the "Sending selected recordings to your PocketDISH" pop-up displays.
- 6 Allow the DVR time to send the chosen recordings until DONE displays.
- 7 On the DVR's remote control, press SELECT.



CONNECT THE POCKETDISH



SELECT RECORDINGS



SENDING RECORDINGS IS DONE

PLAYBACK THE DISH NETWORK RECORDINGS

- ☞ The PocketDISH always remembers where you stopped the last file for playback. On the desktop, select Resume to start playback from that point forward.

BASIC OPERATION

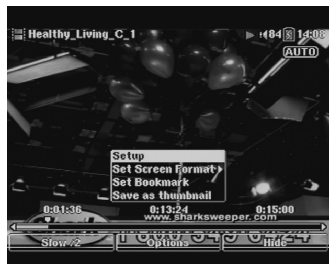
- 1 Turn the PocketDISH on.
- 2 Allow the PocketDISH time for the desktop to display.
- 3 Highlight the Video icon (also used for playback of DISH Network audio recordings).
- 4 Press ON to view the folder content.
- 5 Highlight the DISH Network folder and press ON to view the video files.
- 6 Highlight the desired video file.
- 7 Press ON to playback the DISH Network video or audio file.
- 8 Press OFF to end playback.



SELECT DISH NETWORK



SELECT YOUR FILES



ADDITIONAL OPTIONS

ADDITIONAL FEATURES WHEN A FOLDER IS HIGHLIGHTED

Function key 1:

- Parent: goes to the previous menu level.

Function key 2:

- Info: displays folder information.
- Create folder: makes a new folder.
- Hide thumbnails: displays only the file names.
- Show thumbnails: displays the available thumbnails.
- Reset thumbnails: resets the thumbnails.

Function key 3:

- No option available.

ADDITIONAL FEATURES WHEN A FILE IS HIGHLIGHTED

Function key 1:

- Parent: goes to the previous menu level.

Function key 2:

- Info: displays file information.
- Delete: deletes the file.
- Rename: renames the file.
- Create folder: makes a new folder.
- Hide thumbnails: displays only the file names.
- Show thumbnails: displays the available thumbnails.
- Reset thumbnails: resets the thumbnails.

Function key 3:

- No option available.

Function key 1:

- Normal playback (default).
- Slow motion x2, x4, x8.

Function key 2:

- Setup: opens the setup menu.
- Set Screen format: Auto, Full, 4:3 or 16:9.
- Set bookmark: for future access to the selected scene.
- Save as thumbnail: saves the current scene as a thumbnail for presentation in the video browser.

Function key 3:

- Hide: removes the on-screen menu temporarily.

ON key:

- Pause: pauses the playback.
- Play: continues from pause.

◀ ▶ keys (press and hold):

- Fast Forward: advances through a file quickly when you hold the ▶ key.
- Fast Reverse: reverses through a file quickly when you hold the ◀ key.

▲ ▼ keys (press and hold):

- Volume: increases the volume when you hold the ▲ key or decreases the volume when you hold the ▼ key.




Transfer and Playback

This chapter gives you the procedure to transfer audio or video files from different multimedia devices and play them back on the PocketDISH.

- **INTRODUCTION**
- **INTERNET LINKS**
- **TRANSFER AUDIO/VIDEO FILES**
- **PLAYBACK A COMPATIBLE VIDEO FILE**
- **PLAYBACK A COMPATIBLE SONG**
- **CREATE PLAYLISTS**
- **PLAYBACK PLAYLISTS**
- **INSTALL THE MPEG-4 TRANSLATOR**

INTRODUCTION

 In addition to the playback of DISH Network content, the PocketDISH can also playback DivX/XviD simple profile MPEG-4 encoded video files from other sources.

With your PocketDISH you can transfer video files from your computer, your camcorder, USB flash drive or any other multimedia device which operates as a USB mass storage device.

The PocketDISH can support the DISH Network and DivX/XviD simple profile MPEG-4 format. If you encounter a format that is not supported, it is possible to convert the file into a format that the PocketDISH will playback.

On the hard drive of the PocketDISH you will find a set of PC tools (MPEG-4 Translator) that you can use to convert video files into a playable format. You have to transfer the folder onto your computer, so you can install the conversion tools.

Detailed instructions are given in the next chapter.

INTERNET LINKS

www.archos.com,
www.pocketdish.com

www.apple.com

www.divx.com

www.xvid.org

www.virtualdub.com

www.free-codecs.com

www.digital-digest.com

To buy your games and to get more information about your PocketDISH and its available accessories.

Get more information for iTunes and Mac.

Get more information about the DivX video compression/downloads.

Get more information about the XviD video compression/downloads.

Get more information about VirtualDub video conversion/downloads.

Get the latest compression/decompression (codecs) plug-ins.

Get the latest information about digital audio and video developments.

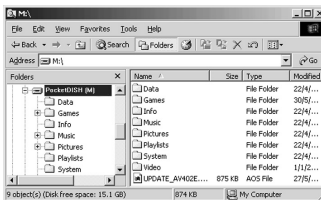
TRANSFER AUDIO/VIDEO FILES

☞ Note that the PocketDISH can display on your computer under different names. Possible names are PocketDISH or Removable Disk.

- 1 Onto your PC, shut down all programs before you start.
- 2 Use the USB cable to connect the PocketDISH to the PC.
- 3 On the PocketDISH, press ON and wait until the USB pop-up displays.
- 4 Your PC should recognize the PocketDISH.
- 5 Open Windows Explorer and notice that the PocketDISH displays as a drive.
- 6 Locate the folder in which you keep the Audio and Video files you want to transfer.
- 7 Copy the required files into the correct folders on the PocketDISH.
- 8 In the PC system tray (next to the clock), locate and click the "Safely Remove Hardware" icon.
- 9 Disconnect the PocketDISH and wait until the automatic file update is completed.



POCKETDISH CONNECTED



TRANSFER YOUR FILES (FOLDERS)



SAFE DISCONNECT

PLAYBACK A COMPATIBLE VIDEO FILE

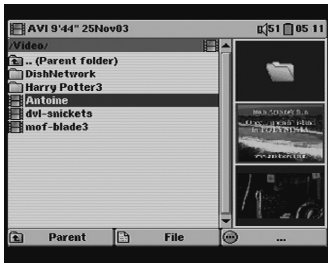
☞ The PocketDISH always remembers where you stopped the last file for playback. On the desktop, select Resume to start the playback from that point forward.

BASIC OPERATION

- 1 Turn the PocketDISH on.
- 2 Allow the PocketDISH time for the desktop to display.
- 3 Highlight the Video icon.
- 4 Press ON to access the content.
- 5 Highlight the desired video file.
- 6 Press ON to playback the video file.
- 7 Press OFF to end playback.



SELECT VIDEO



SELECT YOUR FILES (FOLDER)



PLAYBACK YOUR VIDEO

ADDITIONAL FEATURES WHEN A FOLDER IS HIGHLIGHTED

Function key 1:

- Parent: goes to the previous menu level.

Function key 2:

- Info: displays folder information.
- Create folder: makes a new folder.
- Hide thumbnails: displays only the file names.
- Show thumbnails: displays the available thumbnails.
- Reset thumbnails: resets the thumbnails.

Function key 3:

- No option available.

ADDITIONAL FEATURES WHEN A FILE IS HIGHLIGHTED

Function key 1:

- Parent: goes to the previous menu level.

Function key 2:

- Info: displays file information.
- Delete: deletes the file.
- Rename: renames the file.
- Create folder: makes a new folder.
- Hide thumbnails: displays only the file names.
- Show thumbnails: displays the available thumbnails.
- Reset thumbnails: resets the thumbnails.

Function key 3:

- No option available.

Function key 1:

- Normal playback (default).
- Slow motion: x2, x4, x8.

Function key 2:

- Setup: opens the setup menu.
- Set Screen format: Auto, Full, 4:3 or 16:9.
- Set bookmark: for future access to the selected scene.
- Save as thumbnail: saves the current scene as a thumbnail for presentation in the video browser.

Function key 3:

- Hide: removes the on-screen menu temporarily.

ON key:

- Pause: pauses the playback.
- Play: continues from pause.

◀ ▶ keys (press and hold):

- Fast Forward: advances through a file quickly when you hold the ▶ key.
- Fast Reverse: reverses through a file quickly when you hold the ◀ key.

▲ ▼ keys (press and hold):

- Volume: increases the volume when you hold the ▲ key or decreases the volume when you hold the ▼ key.

PLAYBACK A COMPATIBLE SONG

- ☞ The PocketDISH always remembers where you stopped the last file for playback. On the desktop, select Resume to start the playback from that point forward.

BASIC OPERATION

- 1 Turn the PocketDISH on.
- 2 Allow the PocketDISH time for the desktop to display.
- 3 Highlight the Music icon and press ON to access the content.
- 4 Make your selection from the library.
- 5 Press ON to access the content.
- 6 Highlight the desired song.
- 7 Press ON to playback the song.
- 8 Press OFF to end playback.



SELECT MUSIC



SELECT YOUR SONG (FOLDER)



PLAYBACK YOUR SONG

Chapter 4

ADDITIONAL FEATURES WHEN HIGHLIGHTING THE MUSIC FOLDER (BROWSE HARD DRIVE)

Function key 1:

- Parent: goes to the previous menu level.

Function key 2:

- Info: displays folder information.
- Create folder: makes a new folder.

Function key 3:

- Record: opens the AudioCorder to make an audio recording.

ADDITIONAL FEATURES WHEN A FILE IS HIGHLIGHTED

Function key 1:

- Parent: goes to the previous menu level.

Function key 2:

- Info: displays file information.
- Delete: deletes the file.
- Rename: renames the file.
- Create folder: makes a new folder.

Function key 3:

- Record: opens the AudioCorder to make an audio recording.

ADDITIONAL FEATURES DURING MUSIC PLAYBACK

Function key 1:

- Setup: opens the setup menu.

Function key 2:

- Info: displays additional information.
- Edit Playlist: opens the Playlist to create or modify a Playlist.
- Set Bookmark: for future access to the selected track.

Function key 3:

- Browser: opens the music list from where you can select another song.

CREATE PLAYLISTS

- 1 Turn the PocketDISH on.
- 2 Allow the PocketDISH time for the desktop to display.
- 3 Highlight the Music icon and press ON to access the content.
- 4 In the ARCLibrary, make your selection (Artist - Year) and press ON to access the content.
- 5 Press the ► key to access the Playlist menu.
- 6 Highlight the desired song.
- 7 Press Function key 2 to add the song to the Playlist.
- 8 Highlight the next song and press Function key 2 to add. Repeat this step for additional songs.
- 9 When you have finished, press the ► key to access the Playlist.
- 10 Press Function key 1, highlight Save and press ON.
- 11 Press Function key 1 to confirm the Save action.



SELECT MUSIC



SELECT YOUR FILES



ADD TO THE PLAYLIST

PLAYBACK PLAYLISTS

☞ When a song from the Playlist plays back, you can change the playback sequence. Press Function key 1 to access the Setup menu. Highlight the option PlayMode and press ON to access the options.

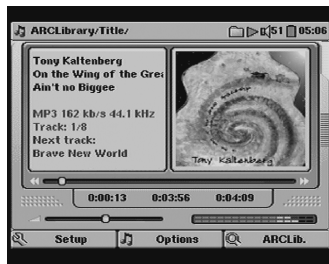
- 1 Turn the PocketDISH on.
- 2 Allow the PocketDISH time for the desktop to display.
- 3 Highlight the Music icon and press ON to access the content.
- 4 In the ARCLibrary, select Playlist and press ON to access the lists.
- 5 Highlight the applicable Playlist and press ON.
- 6 If desired, press Function key 1, and select another playback mode (Shuffle).
- 7 Press ON to confirm the selection.
- 8 Press ON again to playback the songs in the selected Playlist.
- 9 Press OFF to end playback of the playlist.



SELECT MUSIC



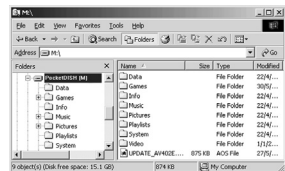
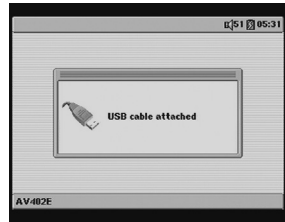
SHUFFLE YOUR PLAYLIST



PLAYBACK THE PLAYLIST

INSTALL THE MPEG-4 TRANSLATOR

- ☞ When connected to an external device, the PocketDISH uses more power than normal. Therefore, connect the PocketDISH to power to prevent an unwanted shutdown.
-
- ☞ The MPEG-4 Translator is only available for personal computers (PC) with a Windows Operating System. Note that on some Windows versions the PocketDISH displays in the Windows Explorer as a Removable Disk. For Mac there are conversion tools available for purchase from the Internet.
-
- 1 Connect the PocketDISH to power.
 - 2 Turn the computer and the PocketDISH on.
 - 3 On the PocketDISH:
 - a. Locate the USB-B port and connect the USB cable.
 - b. Now the "USB cable attached" pop-up displays.
 - c. The PocketDISH keys are temporarily disabled.
 - 4 On the PC:
 - a. Close all programs.
 - b. Locate the USB port and connect the USB cable.
 - c. Create two new folders:
 - C:\PocketDISH\source
 - C:\PocketDISH\codec\divx
 - d. On the PocketDISH drive, locate the folder: **PocketDISH drive\Data\Installation Software.**
 - e. Copy the folder and its contents to C:\PocketDISH\source.



WINDOWS MEDIA PLAYER 9

- 1 In the folder **C:\PocketDISH\source\Installation Software\Windows Media Player 9**, double click your language and locate the .exe or XP.exe (Windows XP only) file.
- 2 Double click the .exe file and follow the on-screen instructions.

DIVX CODEC

- 1 On www.divx.com, click the DivX tab and follow the on-screen instructions to download the free standard DivX codec into **C:\PocketDISH\source\codec\divx**.
- 2 Shut down all programs including e-mail, internet and anti-virus programs before installation.
- 3 In the folder **C:\PocketDISH\source\codec\divx** locate the .exe file.
- 4 Double click the .exe file and follow the on-screen instructions.

VIRTUALDUB PROGRAM

For a seamless installation with the MPEG-4 Translator, install VirtualDub in its default folder. **C:\Program Files\VirtualDub** when prompted.

- 1 In the folder **C:\PocketDISH\source\Installation Software\VirtualDub**, locate the .exe file.
- 2 Double click the .exe file and follow the on-screen instructions.

MPEG-4 TRANSLATOR

This program uses the MP3 codec that came with Windows Media Player.

- 1 In folder **C:\PocketDISH\source\Installation Software\MPEG4-Translator**, locate the .exe file that suits your language.
- 2 Double click the .exe file and follow the on-screen instructions.




Transfer and Playback

This chapter gives you the procedure how to transfer photos or images from different multimedia devices and play them back on the PocketDISH.

- **INTRODUCTION**
- **TRANSFER DIGITAL PHOTOS/IMAGES FROM THE COMPUTER**
- **TRANSFER DIGITAL PHOTOS FROM YOUR CAMERA**
- **VIEW A COMPATIBLE PHOTO OR IMAGE**
- **SPECIAL FUNCTIONS**

INTRODUCTION

 In addition to the playback of DISH Network content, the PocketDISH can also display photos or images from other sources. These photos (images) need to be either in JPEG (.jpg) or BMP (.bmp) format.

With your PocketDISH you can transfer digital photos (images) from your computer, your camera, camcorder, USB flash drive or any other multimedia device which operates as a mass storage device.

The PocketDISH cannot handle all digital formats, but most of the JPEG and BMP formatted photos (images) from any camera are supported. If you encounter a format that is not supported, it is possible to convert the file with use of commercially available programs such as Adobe Photoshop and Paint Shop Pro into a format that the PocketDISH will playback.

When you convert a photo (image) to JPEG or BMP, make sure you use the RGB color or Greyscale mode setting. Consult the user's guide that came with the program for detailed instructions.

If you have photos (images) that are not digitally available to you, you can use a scanner to digitalize them. Once you saved the scanned photo (image) as .jpg or .bmp, you can transfer it to the PocketDISH for viewing. Consult the user's guide that came with the scanner for detailed instructions.

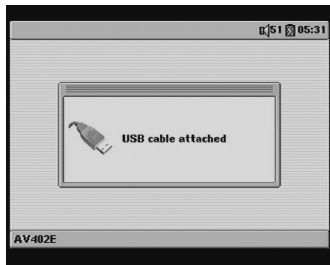
Once the photos (images) are transferred to the PocketDISH, it is possible to view them separately or in a slideshow.

To display the photos (images) on a TV, it is recommended you change the Image Display settings to Progressive to avoid screen flickering. Detailed instructions are given in the following section of this chapter.

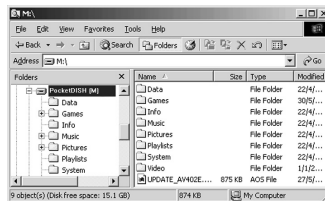
TRANSFER DIGITAL PHOTOS/IMAGES FROM THE COMPUTER

☞ Note that the PocketDISH can display on your computer under different names. Possible names are PocketDISH or Removable Disk.

- 1 On your PC, shut down all programs before you start.
- 2 Use the USB cable to connect the PocketDISH to the PC.
- 3 Turn the PocketDISH on and wait until the "USB cable attached" pop-up displays.
- 4 Open Windows Explorer and notice that the PocketDISH displays as a drive.
- 5 Locate the folder in which you keep the photos and images you want to transfer.
- 6 Copy the required files into the Pictures folder on the PocketDISH.
- 7 In the PC system tray (next to the clock), locate and click the "Safely Remove Hardware" icon.
- 8 Disconnect the PocketDISH and wait until the automatic file update is completed.



POCKETDISH CONNECTED



TRANSFER YOUR FILES (FOLDERS)



SAFE DISCONNECT

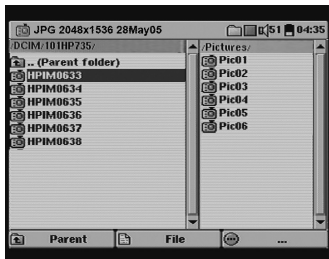
TRANSFER DIGITAL PHOTOS FROM YOUR CAMERA

☞ With your PocketDISH you can transfer digital photos and images from your computer, your camera, camcorder, USB flash drive or any other multimedia device which operates as a mass storage device.

- 1 Connect the PocketDISH to your camera as described in *Getting Started - Connect a USB Mass Storage Device* on page 13.
- 2 On the PocketDISH, in the left browser section (USB device), use the ▲ ▼ and ON keys to locate the photos (images).
- 3 Press the ▶ key to activate the right section (PocketDISH) and highlight the Pictures folder.
- 4 Press the ◀ key to activate the left section and highlight the photo that you want to transfer.
- 5 Press Function key 2 and highlight the Copy or Copy All option as required.
- 6 Press ON to execute the transfer from your camera to the PocketDISH. Notice that the "Copying File: file name" pop-up displays. Wait for the transfer to complete.
- 7 Turn the camera OFF and notice that the "USB device disconnected - Please Wait ..." pop-up displays and disappears. Now you safely can remove the USB cable.



CAMERA (USB DEVICE) CONNECTED



TRANSFER YOUR FILES (FOLDERS)



SAFE DISCONNECT

VIEW A COMPATIBLE PHOTO OR IMAGE

BASIC OPERATION

- 1 Turn the PocketDISH on.
- 2 Allow the PocketDISH time for the desktop to display.
- 3 Highlight the Photo icon.
- 4 Press ON to access the content.

VIEWING A SINGLE PHOTO

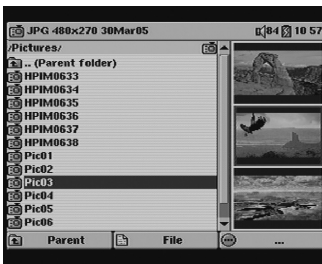
- 1 Highlight the desired photo.
- 2 Press ON to view the photo.

VIEWING A SLIDESHOW

- 1 Press Function key 2 and select the Slideshow option.
- 2 Press ON to view the slideshow.
- 3 Press OFF to end viewing the photos.



SELECT PHOTO



SELECT YOUR PHOTO (FOLDER)



VIEW YOUR PHOTO

Chapter 5

VIEWING A SLIDESHOW



SELECT PHOTO



SELECT SLIDESHOW



VIEW YOUR SLIDESHOW

ADDITIONAL FEATURES WHEN A FOLDER IS HIGHLIGHTED

Function key 1:

- Parent: goes to the previous menu level.

Function key 2:

- Info: displays additional information.
- Create folder: makes a new folder.
- Hide thumbnails: displays only the file names.
- Show thumbnails: displays the available thumbnails.
- Reset thumbnails: resets the thumbnails.

Function key 3:

- No option available.

ADDITIONAL FEATURES WHEN A FILE IS HIGHLIGHTED (BROWSER)

Function key 1:

- Parent: goes to the previous menu level.

Function key 2:

- Slideshow: displays the photos one after another.
- Info: displays additional information.
- Delete: deletes the photo.
- Rename: renames the photo.
- Create folder: makes a new folder.
- Hide thumbnails: displays only the file names.
- Show thumbnails: displays the available thumbnails.
- Reset thumbnails: resets the thumbnails.

Function key 3:

- No option available.

ADDITIONAL FEATURES WHEN VIEWING A PHOTO (IMAGE)

Function key 1:

- Displays 1 photo, 4 photos or 9 photos at a time.

Function key 2:

- Info: displays additional information.
- Delete: deletes the photo.
- Save as Wallpaper: saves this photo as a desktop background (1-Pic view only).

Function key 3:

- Hide: removes the on-screen menu temporarily (1-Pic view only).

SPECIAL FUNCTIONS

MAGNIFYING THE PHOTO (IMAGE) ON DISPLAY

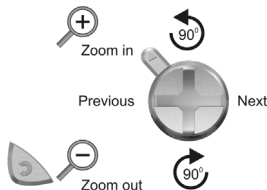
☞ Magnifying a photo might result in a poorer quality when viewing. This is related to the resolution of the original photo size. The bigger the file size, the better the magnification view will be.

- 1 When a single picture is displayed, press Function key 3 to hide the on-screen menu.
- 2 Press ON to magnify (Zoom in) the photo once (+ sign displays). Each time you press ON, the photo magnifies one step, up to three times (refer to the + marks in the display).
- 3 Press OFF to view the default size (Zoom out).

SPECIAL KEY FUNCTIONS (NOT FOR SLIDESHOW PRESENTATIONS)

When a single picture is displayed in 100% view, use:

- The **▶** key: advances to the next photo in the list or folder.
- The **◀** key: displays the previous photo.
- The **▲** key: rotates the photo 90 degrees counter-clockwise.
- The **▼** key: rotates the photo 90 degrees clockwise.



SLIDESHOW TIMING

- 1 When on the desktop, select the Setup icon and press ON.
- 2 Highlight the PlayMode icon and press ON.
- 3 Press the **▼** key repeatedly until the Picture Pause option is highlighted.
- 4 Use the **◀ ▶** keys to set the display time of each photo.



Description and Operation

This chapter gives you the description and operation for the AudioCorder.

- **DESCRIPTION**
- **OPERATION**
- **INCREMENTAL RECORDING**
- **EDITING**

DESCRIPTION

PocketDISH can record audio from almost any source using the built-in microphone or using the multi-connector with analog AV-cable. When you use the analog AV-cable, make sure you use the source's Line-out connection (which is not amplified).

USING THE MICROPHONE

With this feature you can use the PocketDISH as a voice recorder or as an analog audio recorder.

USING THE MULTI-CONNECTOR AND ANALOG AV-CABLE

With this feature you can make audio recordings from almost any audio source that has a Line-out connection.

INCREMENTAL RECORDING

While recording, the Next option lets you stop a current recording and instantly start a new one (for example, breaking up a lengthy track or a live concert into separate digital files).

FILE EDITING

The PocketDISH lets you edit your audio files. You can cut out a section from a recording that you want to keep.

FILE LOCATION

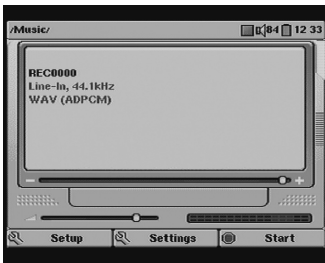
All recordings are stored in the Music folder. You can access this folder from the desktop by selecting the Music icon. Select the folder "Browse hard drive" to locate the recordings.

OPERATION

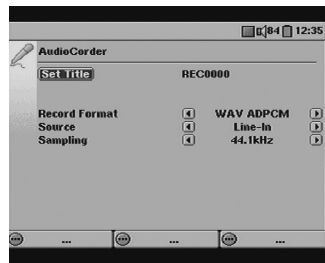
- 1 Connect the PocketDISH as described in *Getting Started - Connect an Audio Device* on page 12.
- 2 On the desktop, select the AudioCorder icon and press ON.
- 3 In the pre-record screen, if necessary, use the ◀ ▶ keys to set the recording level.
- 4 Press Function key 2 to access the AudioCorder Settings menu.
- 5 In the AudioCorder Settings menu, use the ▲ ▼ keys to select:
 - a. The Set Title option. Press ON to rename the recording.
 - b. The Recording Format (WAV PCM = best quality, WAV ADPCM = good quality)
 - c. The Source (either analog Line-In (multi-connector) for an audio device, or Microphone).
 - d. The Sampling (the higher the value, the better the quality, the bigger the file size).
- 6 Press any Function key to return to the pre-record screen and select Start (Function key 3).
- 7 Press OFF to stop the current recording. Press OFF to end and return to the Music folder.



SELECT AUDIOCORDER



DEFINE THE RECORDING LEVEL



SET THE RECORDING NAME/SOURCE

INCREMENTAL RECORDING

- ☞ Once the recordings have been completed, you can rename the files. Highlight the Music icon, "Browse hard drive" (folder), the recording that you want to rename, then press Function key 2 (Rename).

- ☞ Once the PocketDISH is connected to the computer, you also can use the computer to rename the files or folders.

- ☞ You can only make use of the Incremental recording feature during recording. You can use it to breakup the running recording into several separate recordings.

 - 1 To end the current recording and start a new one instantly, press Function key 2. The "Wait, writing to disk" pop-up displays and the next recording is started.
 - 2 To pause the recording, press Function key 3 (Pause).
 - 3 When you want to continue the same recording, press Function key 3 again (Resume).



RECORDING THE FIRST SONG



SELECT NEXT



RECORDING THE NEXT SONG

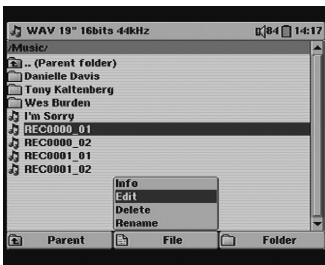
EDITING

☞ You can only edit the analog recordings, which have been made with use of the analog AV-cable or the microphone. You cannot edit transferred songs that originate from an external source.

- 1 On the desktop, select the Music icon and press ON.
- 2 Highlight the Browse hard drive folder and press ON.
- 3 Use the ▲ ▼ keys to highlight the recording that you want to edit.
- 4 Press Function key 2 and select the Edit option. The recording starts to playback.
- 5 Use the ◀ ▶ keys to locate the start point for the section that you want to edit.
- 6 Press Function key 1 to select the start point for cutting.
- 7 Use the ◀ ▶ keys to locate the end point for the section that you want to edit.
- 8 Press Function key 3 to select the end point for cutting.
- 9 Press Function key 2 to save the cut recording. Note that the original file is untouched.



SELECT MUSIC



SELECT THE EDIT OPTION



CUT OUT THE SECTION TO KEEP



Description and Operation

This chapter gives you the description and operation for the PocketDISH Browser.

- **DESCRIPTION**
- **HOW TO USE THE BROWSER**
- **VIEW FILES OR FOLDERS**
- **COPY FILES OR FOLDERS**
- **RENAME FILES OR FOLDERS**

DESCRIPTION

You can use the Browser to access any file type as if you are using a computer. The file operating system is much like Microsoft Windows Explorer.

The out-of-the box file system already has some system folders which can have sub-folders for easy navigation and file retrieval. The system folders are:

- **Data:** holds any file as if you are using a USB flash drive.
- **Info:** holds all on-screen help information.
- **Music:** holds the songs that you have transferred or the audio that you have recorded with the use of the AudioCorder.
- **Pictures:** holds the photos (images) that you have transferred.
- **Playlists:** holds the playlists for easy listening of your songs.
- **Video:** holds the video files that you have send from the DISH Network DVR.

In the Browser itself, one file (UPDATE_AV402E.AOS) is displayed. This file is mandatory and may not be deleted! This file is required to recover the PocketDISH after a system crash or to facilitate future software upgrades.

You can extend the file system with your own created main folders and sub-folders as required.

HOW TO USE THE BROWSER

☞ Do not delete the system folders. They are directly connected to the icons on the desktop.

BASIC OPERATION

- 1 Turn the PocketDISH on.
- 2 Allow the PocketDISH time for the desktop to display.
- 3 Highlight the Browser icon.
- 4 Press ON to access the folder list.
- 5 Make your selections as applicable. Please note that unsupported file formats can be seen in the folder, but the PocketDISH will not play or display the file content. These files can be viewed or played once transferred to a computer, which has the programs that go with the file (for example, *.doc is used by Microsoft Word).
- 6 To exit the application, press Control 2 repeatedly until the desktop displays.



SELECT BROWSER



SELECT YOUR FOLDER



SELECT/PLAYBACK YOUR FILE

VIEW FILES OR FOLDERS

ADDITIONAL FEATURES WHEN A FOLDER IS HIGHLIGHTED

Function key 1:

- No option available.
- Parent: goes to the next folder level up (only for sub-folders).

Function key 2:

- No option available.

Function key 3:

- Info: displays additional information.
- Create: makes a new folder.
- Delete: deletes the folder and its contents.
- Rename: renames the folder.

ADDITIONAL FEATURES WHEN A FILE IS HIGHLIGHTED

Function key 1:

- Parent: goes to the next folder level up (only for sub-folders).

Function key 2:

- Info: displays additional information.
- Edit: opens the file for editing.
- Delete: deletes the file.
- Rename: renames the file.

Function key 3:

- Create: makes a new folder.

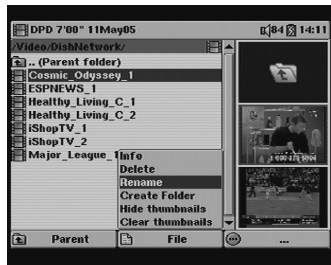
COPY FILES OR FOLDERS

- 1 While in the Browser, press the **▶** key and note that two screens display.
- 2 Use the **◀ ▶** keys to navigate between source and destination screen.
- 3 Make sure the destination screen displays the correct target folder
- 4 Locate the function File or Folder and press the adjacent Function key.
- 5 To exit the application, press OFF repeatedly until the desktop displays.

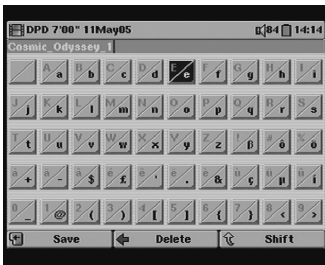
RENAME FILES OR FOLDERS

☞ When the PocketDISH is connected to the PC, you also can use the PC to rename the files or folders. This procedure is for use with the PocketDISH virtual keyboard.

- 1 Select the Browser menu.
- 2 Locate the function File or Folder and press the adjacent Function key.
- 3 Highlight the Rename option with use of the ▼ key.
- 4 Press ON to open the keyboard.
- 5 Use Function key 2 to delete the current name.
- 6 Use the ◀ ▶ ▲ ▼ keys and ON for selecting the characters.
- 7 You can press and hold the ◀ ▶ keys to scroll through the title.
- 8 Use Function key 3 to shift between upper and lower case characters.
- 9 Use Function key 1 to save the new name. Select Yes or No to complete the session.



SELECT RENAME



USE THE KEYBOARD



SAVE THE NEW NAME



This chapter explains how to personalize and set up your PocketDISH.

- **DESCRIPTION**
- **SOUND MENU**
- **PLAYMODE MENU**
- **CLOCK MENU**
- **DISPLAY MENU**
- **APPEARANCE MENU**
- **POWER MENU**
- **LOCKS MENU**
- **SYSTEM MENU**
- **INSTALL A PERSONAL WALLPAPER**
- **SOFTWARE UPGRADES FROM THE INTERNET**

DESCRIPTION

From the desktop, you can use the Setup menu to personalize your PocketDISH. It is also possible to enter the Setup menu:

- with Function key 1, while you are listening to a song, or
- with Function key 2, while you are watching video.

The Setup menu gives access to:

- **Sound:** sets your sound preferences.
- **PlayMode:** tells the PocketDISH how to playback the files.
- **Clock:** sets the local time.
- **Display:** sets the Language, look and feel of the on-screen menus and the Video Output.
- **Power:** sets the Battery and DC-power options.
- **Locks:** sets the age based view ratings and allows for locking and unlocking the system and changing the password. The DISH Network DVR password is not the same as on PocketDISH.
- **System:** set, upgrade and review the system data (firmware).



SELECT SETUP (DESKTOP)



SELECT SETUP (MUSIC)

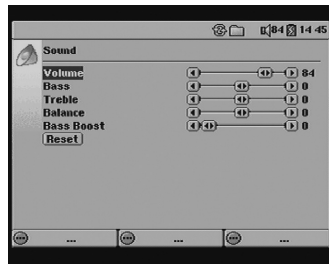


THE SETUP MENU

SOUND MENU

In the Sound menu, you can set your personal preferences for:

- **Volume:** sets the overall sound level.
 - **Bass:** sets the lower sound frequencies.
 - **Treble:** sets the higher sound frequencies.
 - **Balance:** sets the balance between the left and right speaker.
 - **Bass Boost:** increases the level of the lower sound frequencies.
- With the Reset option you can return to the initial factory settings.

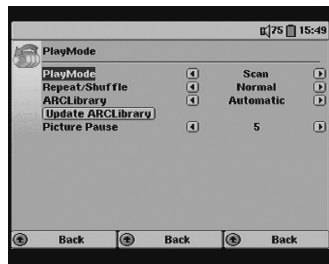


THE SOUND MENU

PLAYMODE MENU

In the Audio playback you can set your preferences for:

- **PlayMode:** sets the playback mode to Single, Folder, All, Queue (during the playback of the song, you can select the next song for playback), or Scan (plays back only the intro of each song).
- **Repeat/Shuffle:** sets the playback order to Normal, Repeat or Shuffle.
- **ARCLibrary:** sets the update method after a file transfer. With the Update ARCLibrary option you can do a manual update.
- **Picture Pause:** sets the display time of each picture when you use the Slideshow.



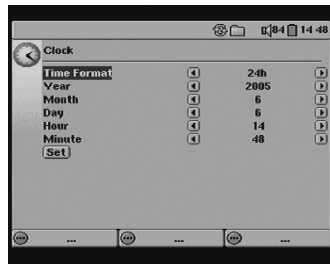
THE PLAYMODE MENU

CLOCK MENU

In the Clock menu, you can set the local time:

- **Time Format:** sets the 24 hour or 12 hour clock.
- **Year:** sets the current year.
- **Month:** sets the current month.
- **Day:** sets the current day.
- **Hour:** sets the current hour.
- **Minute:** sets the current minute.

With the Set option you must confirm the changes before they become active.



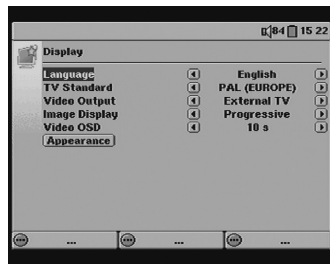
THE CLOCK MENU

DISPLAY MENU

In the Display menu, you can set:

- **Language:** sets the menu language.
- **TV Standard:** sets the NTSC (USA) or PAL (Europe) standard.
- **Video Output:** selects the PocketDISH or TV set for viewing.
- **Image Display:** sets Interlaced (video) or Progressive (photo).
- **Video OSD:** sets the view time of the function menus.

With the Appearance option, you can advance to more display related options as described in the next paragraph.



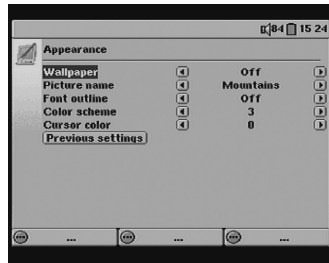
THE DISPLAY MENU

APPEARANCE MENU

In the Appearance menu, you can set:

- **Wallpaper:** selects a personal background as defined in the Picture name option.
- **Picture name:** selects a JPEG picture as a wallpaper.
- **Font Outline:** emphasizes the black on-screen text.
- **Color Scheme:** selects another pre-defined menu color.
- **Cursor color:** selects another pre-defined cursor color.

With the Previous settings option, you can delete the changes and recall the latest settings.

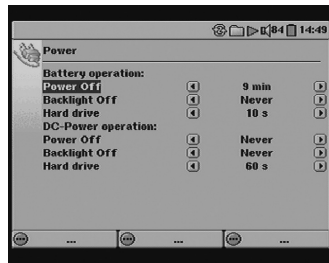


THE APPEARANCE MENU

POWER MENU

In the Power menu, you can set the power save mode for battery operation as well as for DC-power operation:

- **Power Off:** sets the inactive usage time before the PocketDISH completely shuts down automatically.
- **Backlight Off:** sets the inactive usage time before the PocketDISH turns off the display only.
- **Hard drive:** sets the inactive usage time before the PocketDISH turns off the hard drive only. Note that this setting will affect the response time for file access.



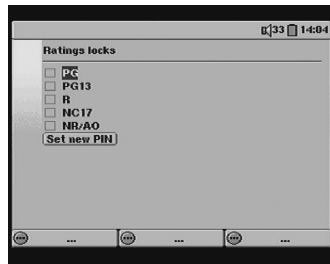
THE POWER MENU

LOCKS MENU

In the Locks menu, you can set your Ratings, Lock and Unlock the system and change your password. The Ratings are:

- **PG**: Parental Guidance suggested (maybe not for all ages).
- **PG13**: Parents strongly cautioned (not for under age of 13).
- **R**: Restricted, guidance suggested (maybe not for under age of 17).
- **NC17**: Not admitted for under age of 17.
- **NR/AO**: Not Rated - Adults Only.

With the Set new password option, you can change the password,



THE RATING LOCKS MENU

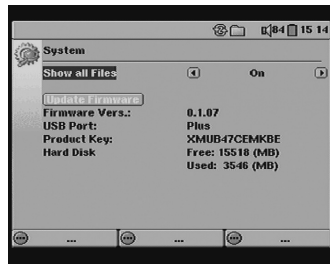
SYSTEM MENU

In the System menu, you can set or review:

- **Show all Files**: displays all files or just the playable files.

With the Update Firmware option, you can manually update the software version once it is downloaded in the PocketDISH.

- **Firmware version**: to review the current software version.
- **USB Port**: to review the USB port status.
- **Product key**: to review the product key that is required when you buy a game or need help from the Archos Customer Service Center.
- **Hard Drive**: to review the Free/Used status of the hard drive.



THE SYSTEM MENU

INSTALL A PERSONAL WALLPAPER

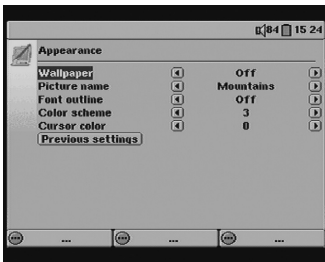
- 1 Look up a photo (image) as described in the *The Photo Album - View a Compatible Photo or Image* on page 37.
- 2 When the photo is on-screen, press Function key 2, highlight Save as wallpaper and press ON.
- 3 Press OFF repeatedly to exit the session.

TO CHANGE THE WALLPAPER SETTINGS

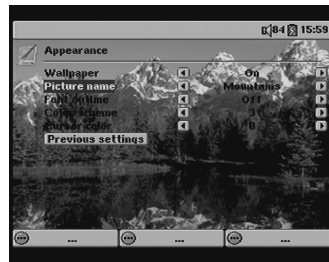
- 1 On the PocketDISH desktop, highlight the Setup icon and press ON.
- 2 In the Setup menu, highlight the Display option and press ON.
- 3 In the Display menu, highlight the Appearance option, and press ON.
- 4 In the Appearance menu, highlight your wallpaper (Wallpaper: On, Picture name: as desired).
- 5 Change the Font outline, Color scheme and Cursor color as appropriate.
- 6 Press OFF repeatedly until the desktop displays.



SELECT SETUP (DESKTOP)



SELECT DISPLAY APPEARANCE



SELECT YOUR PICTURE NAME

SOFTWARE UPGRADES FROM THE INTERNET

- 1 Download the latest software version from www.archos.com to your computer.
- 2 Connect the PocketDISH to the computer. Note that the "USB cable attached" pop-up displays.
- 3 On the computer, locate the PocketDISH drive and double click.
- 4 Note that a file called UPDATE_AV402E.AOS is present.
- 5 On the computer, unzip the new software and copy it onto the PocketDISH drive.
- 6 When prompted, overwrite the current file.
- 7 In the PC system tray (next to the clock), locate and click the "Safely Remove Hardware" icon.
- 8 Disconnect the USB cable from the PocketDISH and do not touch any keys.
- 9 On the desktop, highlight Setup and press ON, then highlight System and press On.
- 10 Highlight Update Firmware and press ON. Allow PocketDISH time to update the software.
- 11 When the "Update OK." pop-up displays, press ON and wait until the desktop displays.



CONFIRM FILE REPLACEMENT



SELECT UPDATE FIRMWARE



UPDATE FINISHED



This chapter provides help for questions or problems you may have.

- **POWER**
- **DISH NETWORK**
- **CONNECTIONS**
- **FILES**
- **GAMES**
- **MULTIMEDIA**
- **COMPUTER**
- **IF NOTHING HELPS**

Power

Question

- 1 The battery does not last as long as I expected.

Possible Cause

The unit has been connected to an external device.

How to Resolve

■ When connected to an external device, the PocketDISH uses more energy than normal. Therefore, always connect the PocketDISH to power to prevent an unwanted shutdown.

- 2 The PocketDISH switches off automatically.

The battery power is low.

■ Connect the AC/DC adapter that came with the PocketDISH.

Power settings are set to save battery power.

- a. Turn on the PocketDISH.
b. Highlight the Setup icon.
c. Press ON once.
d. Highlight the Power icon.
e. Press ON once.
f. Set the Battery / DC power operation options to a convenient value.
g. Press OFF twice or until the desktop displays.

Question	Possible Cause	How to Resolve
3 The display turns black after a few seconds.	Power settings are set to save battery power.	<ul style="list-style-type: none"> a. Turn on the PocketDISH. b. Highlight the Setup icon. c. Press ON once. d. Highlight the Power icon. e. Press ON once. f. Set the Battery / DC power operation options to a convenient value. g. Press OFF twice or until the desktop displays.
4 It seems that the battery does not charge.	You did not use the correct AC/DC adapter.	<ul style="list-style-type: none"> ■ You can only use the AC/DC adapter that came with the PocketDISH.
	You did not install the AC/DC adapter correctly.	<ul style="list-style-type: none"> ■ On the PocketDISH, make sure the CHG indicator is on. ■ Make sure the connections are made correctly.
	General power failure.	<ul style="list-style-type: none"> ■ Check your circuit breaker and make sure power is available.

Question

- 4 It seems that the battery does not charge.
- 5 Can I use PocketDISH and its AC/DC adapter abroad?

Possible Cause

Li-Ion battery is worn out.

How to Resolve

- Please contact the Archos Customer Service Center.
- Yes you can. The AC/DC adapter can be used between 100Vac-240Vac / 50Hz-60Hz.

DISH Network

Question

- 1 I cannot transfer the DISH Network content from the PocketDISH to another device.
- 2 I cannot find my DISH Network audio recordings.
- 3 I don't hear any sound from my headphone.

Possible Cause

DISH Network content is encrypted and meant for private use only.

These recordings are listed in the Video folder of the PocketDISH.

The in-line volume control of the headphone is set to minimum.

The PocketDISH volume is set too low or minimum.

How to Resolve

- This is normal. The content that you have subscribed to cannot be transferred to another device.
- This is normal. On the DISH Network DVR, the DISH Network audio recordings are also saved in the "My Recordings" list.
- Adjust the in-line volume control to a higher level until sound is heard.
- On PocketDISH, use the ▲ key to increase the volume.

Connections

Question

- 1 There seems to be no connection between devices.
- 2 The USB cable does not fit between the external device and the PocketDISH.
- 3 I cannot record from my audio device.
- 4 I don't hear any sound from my headphone.

Possible Cause

- Your cable might be damaged.
- You did not use the USB adapter cable.
- You have made the wrong connections.
- The in-line volume control of the headphone is set to minimum.
- The PocketDISH volume is set too low or minimum.

How to Resolve

- Use another cable.
- Install the USB adapter cable between the external device and the PocketDISH.
- a. Install the multi-connector first.
- b. Install the AV-cable into the Line in connection.
- c. Match the colors of the red and white RCA connectors.
- Adjust the in-line volume control to a higher level until sound is heard.
- On PocketDISH, use the ▲ key to increase the volume.

Question

- 5 The PocketDISH content does not display on my TV screen.

Possible Cause

You have made the wrong connections.

On the PocketDISH, you did not select the correct Video out option.

How to Resolve

- Install the multi-connector first.
- Install the AV-cable into the AV out connection.
- Match the colors of the RCA connectors.

OPTION 1

- Press and hold Function key 2 for at least three seconds.

OPTION 2

- Highlight the Setup icon.
 - Press ON once.
 - Highlight the Display icon.
 - Press ON once.
 - In the Video out option, press the ► key.
 - Now the TV screen displays.
 - Use the PocketDISH keys as usual to select your video.
 - On shut down, PocketDISH reverts to its own LCD.
- PocketDISH will only work correctly when directly connected to the computer's USB connector.

- 6 Are USB hubs supported?

Files

Question

1 I cannot play a video or audio file.

Possible Cause

You have a file format that is not supported by the PocketDISH.

How to Resolve

- Use the MPEG-4 translator or Windows Media Player to convert your multimedia file into a playable format.
- PocketDISH only supports the formats as specified in this manual.

You are limited by the Locks.

- Enter your password to view the file.

2 I cannot see a file but I know it must be there.

You have a file format that is not supported by the PocketDISH.

- On the desktop, highlight the Browser icon and review the folder. Unsupported files should be transferred and kept in the Data folder (mass storage).

You have selected the option Show all Files = OFF

- a. On the desktop highlight the Setup icon and press ON.
- b. Highlight the System icon and press ON.
- c. Select Show all Files = On.

3 I cannot play i-Tunes

You have purchased protected (Apple-only encrypted) music.

- There is no solution.

Games

Question

- 1 I cannot install new games.
- 2 The game does not play all levels (restricted use).
- 3 Where can I buy games?

Possible Cause

- You do not have an Archos licensed game.
- You are using a playable demo.

How to Resolve

- Only use Archos licensed games.
- Buy the full version from Archos.
- Please visit on the Internet www.archos.com

Multimedia

Question

- 1 I cannot transfer files from my external device (e.g. camera) to the PocketDISH.
- 2 I cannot synchronize with Windows Media Player.

Possible Cause


- The external device is not a USB generic mass storage device as it asks for drivers to operate correctly.
- You only can synchronize from Windows Media Player to your PocketDISH.

How to Resolve

- You only can transfer files from generic USB mass storage devices to the PocketDISH.
- Transfer the files first to a computer and from there onto the PocketDISH.
- In Windows Media Player locate the Sync tab and follow the on-screen instructions.

Question	Possible Cause	How to Resolve
3 I cannot translate a file into a format for the PocketDISH.	Windows Media Player cannot translate the file because it is a protected file.	■ There is no solution for this issue.

Computer

 If your problem or question is not listed in this section, please refer to the user's guide that came with your computer or consult your computer retailer for advice.

Question	Windows	Mac
1 Which operating system is supported?	Microsoft Windows ME/2000/XP or higher.	Mac OS 10.2.4 or higher
2 Which USB drivers do I need?	The PocketDISH acts as a mass storage device that is recognized by the listed operating systems.	The PocketDISH acts as a mass storage device that is recognized by the listed operating systems.
3 The computer does not recognize the PocketDISH.	Make sure the USB drivers that come with the computer's operating system are installed completely.	Make sure the USB drivers that come with the Mac operating system are installed completely.

Question	Windows	Mac
4 File transfer seems to be slow.	Your computer might only be USB 1.1 compatible which has a lower transfer speed than USB 2.0.	Your computer might only be USB 1.1 compatible which has a lower transfer speed than USB 2.0.
5 Where can I get additional technical support?	www.microsoft.com	www.apple.com
6 My PocketDISH or computer has strange file names.	You have not disconnected the PocketDISH properly. In the PC system tray (next to the clock), locate and click the "Safely Remove Hardware" icon.	You have not disconnected the PocketDISH properly. In the Finder, please use the Eject button that displays behind the PocketDISH drive.
7 On the PocketDISH, I see files that I did not create.	This is normal, sometimes the computer transfers files for proper operation of the devices.	This is normal, sometimes the computer transfers files for proper operation of the devices.
8 I have trouble installing Windows Media Player 10.	You are not running Windows XP or higher. Use Windows Media Player 9 or upgrade to Windows XP.	You cannot use the Windows Media Player, you have to use the iTunes player together with the iTunes plug-in that you can download from www.archos.com .

If nothing helps

Question

- 1 The PocketDISH is frozen, none of the buttons work.

Possible Cause

You have activated the “Buttons Locked!” option.

You have activated the “LCD/TV” option.

How to Resolve

- Press and hold Function key 1 for three seconds.
- Do a reset by pressing and holding OFF for at least 10 seconds, or until the PocketDISH shuts down, then turn the PocketDISH back on and try again.
- Press and hold Function key 2 for three seconds.
- Do a reset by pressing and holding OFF for at least 10 seconds, or until the PocketDISH shuts down, then turn the PocketDISH back on and try again.
- Call the Archos Customer Service Center at: 1-877-300-8879 (toll free).


- 2 I forgot my password.



Warranty, Compliance and Agreements

This appendix informs you about warranties, compliance and agreements.

- **EXTENT OF LIMITED WARRANTY**
- **LIMITATIONS OF WARRANTY**
- **LIMITATIONS OF LIABILITY**
- **LOCAL LAW**
- **FCC COMPLIANCE**
- **SOFTWARE DOWNLOADS**
- **LCD PIXEL POLICY**
- **COPYRIGHT AND TRADEMARKS**

 This Limited Warranty is a legal document. Keep it in a safe place. Remember to retain your Proof of Purchase for warranty service. Any items returned without a copy of the Proof of Purchase will be considered out of warranty.

EXTENT OF LIMITED WARRANTY

Archos warrants to the original end user customer that Archos products will be free from defects in materials and workmanship for the duration of two years, which begins on the date of purchase by the customer. Customer is responsible for maintaining proof of date of purchase.

For software products, Archos' limited warranty applies only to a failure to execute programming instructions. Archos does not warrant that the operation of any product will be uninterrupted or error free.

Archos' limited warranty covers only those defects which arise as a result of normal use of the product, and do not apply to any:

- damage from misuse or neglect,
- improper or inadequate maintenance or modification,
- software, interfacing, media, parts, or supplies not provided or supported by Archos, or
- operation outside the product's specifications,
- theft.

If Archos receives, during the applicable warranty period, notice of a defect in any hardware product, which is covered by Archos' warranty, Archos shall either repair or replace the defective product at Archos' option.

If Archos is unable to repair or replace, as applicable, a defective product which is covered by Archos' warranty, Archos shall within a reasonable time after being notified of the defect, refund the purchase price for the product.

Archos shall have no obligation to repair, replace or refund until the customer returns the defective product to Archos.

Any replacement product may be either new or like-new, provided that it has functionality at least equal to that of the product being replaced.

Archos' limited warranty is only valid in the country of purchase.

LIMITATIONS OF WARRANTY

The Archos products contemplated hereunder are provided "As Is". To the extent allowed by local law, neither Archos nor its third party suppliers make any other warranty or condition of any kind, whether express or implied, with respect to the Archos products, and specifically disclaim the implied warranties or conditions of merchantability, satisfactory quality, fitness for a particular purpose, title and noninfringement.

To the extent allowed by law, EchoStar makes no warranty, expressed or implied, as to the PocketDISH, including but not limited to any warranties or conditions of merchantability, satisfactory quality, fitness for a particular purpose, title and noninfringement.

LIMITATIONS OF LIABILITY

To the extent allowed by local law, the manufacturer remedies provided in this Warranty Statement are the customer's sole and exclusive remedies.

To the extent allowed by local law, except for the obligations specifically set forth in this Warranty Statement, in no event shall EchoStar, Archos or its third party suppliers be liable for direct, indirect, special, incidental, or consequential damages, whether based on contract, tort, or any other legal theory and whether advised of the possibility of such damages.

LOCAL LAW

This Warranty Statement gives the customer specific legal rights. The customer may also have other rights that vary from state to state in the United States, from province to province in Canada, and from country to country elsewhere in the world.

To the extent that this Warranty Statement is inconsistent with local law, this Warranty Statement shall be deemed modified to be consistent with such local law. Under such local law, certain disclaimers and limitations of this Warranty Statement may not apply to the customer.

Appendix

For example, some states in the United States, as well as some governments outside the United States (including provinces in Canada), may:

- preclude the disclaimers and limitations in this Warranty Statement from limiting the statutory rights of a consumer (e.g., the United Kingdom),
- otherwise restrict the ability of a manufacturer to enforce such disclaimers or limitations, or
- grant the customer additional warranty rights, specify the duration of implied warranties which the manufacturer cannot disclaim, or not allow limitations on the duration of implied warranties.

FCC COMPLIANCE

This equipment has been tested and found to comply with limits for a Class B digital device, pursuant to Part 15 of the FCC Rules. These limits are designed to provide reasonable protection against harmful interference in a residential installation. This equipment generates, uses and can radiate radio frequency energy and, if not installed and used in accordance with instructions, may cause harmful interference to radio communications. However, there is no guarantee that interference will not occur in a particular installation. If this equipment does cause harmful interference to radio or television reception, which can be determined by turning the equipment off and on, the user is encouraged to try to correct the interference by one or more of the following measures:

- Reorient or relocate the receiving antenna,
- Increase the separation between the equipment and receiver,
- Connect the equipment into an outlet on a circuit different from that to which the receiver is connected,
- Consult the dealer or an authorized service center technician for help.

-
- ! Modifications not authorized by the manufacturer or EchoStar Technologies Corporation may void users authority to operate this device. FCC Part 15 - Operation is subject to the following two conditions:
 - 1 This device may not cause harmful interference.
 - 2 This device must accept any interference received including interference that may cause undesired operation.
-

SOFTWARE DOWNLOADS

EchoStar Technologies Corporation will make available software updates to keep your PocketDISH as up-to-date as technically possible. EchoStar Technologies Corporation makes no warranties with respect to the use of the supplied software downloads and specifically disclaims any implied warranties, including without limitation any warranties of merchantability, fitness for a particular purpose, title or noninfringement.

EchoStar Technologies Corporation reserves the right, for whatever reason, to revise, change or modify the software that can be used by your PocketDISH without the obligation to notify or warrant any person or organization of such change. Therefore, please check the downloads that come via the EchoStar satellite or visit the internet site www.archos.com, on a regular basis, for the latest software available.

LCD PIXEL POLICY

The LCD screen on your PocketDISH unit has been manufactured to rigorous standards to provide a high quality viewing experience. Nevertheless, your LCD screen may have slight imperfections. This is not particular to the Archos screen, but to all devices which have LCD screens regardless of the original manufacturer of the LCD. Each screen pixel contains three dot elements (Red, Blue, and Green). One or all of the dots in a given pixel may be stuck on or stuck off. A single dot stuck off is the least noticeable. All three dots of a pixel stuck on is the most noticeable. Archos guarantees that its PocketDISH screen will have no more than 1 defective pixel (regardless if that pixel has one or more defective dots). This means that during the period of guarantee for your country or jurisdiction, if the screen on your product has two or more defective pixels, Archos will repair or replace your PocketDISH unit at its cost. Thus, one defective pixel is not grounds for replacement or repair of the product.

COPYRIGHT AND TRADEMARKS

© 2005 EchoStar Technologies Corporation. All rights reserved worldwide. This user's guide has been provided pursuant to an agreement containing restrictions on its use. This user's guide is also covered by Federal Copyright Law.

No part of this user's guide may be copied, distributed, transmitted, stored in a retrieval system or translated into any human or computer language, in any form or by any other means, electronically, mechanically, magnetically, manually or otherwise or disclosure to third parties without the express written permission of EchoStar Technologies Corporation.

EchoStar Technologies Corporation is possibly in the possession of patents, requests for patent approval, trademarks, copyrights and other intellectual property with respect to the contents within this user manual. The submission of this User's guide does not imply you have any license or other legal right for the use of the here above mentioned without the express written permission of EchoStar Technologies Corporation. All other trademarks are the property of their respective owners or companies.

IF YOU NEED ASSISTANCE

- 1 Call the Archos Customer Service Center at 1-877-300-8879 (toll free).
- 2 A Customer Service Representative will assist you.
- 3 Returned equipment must be packaged properly, using either the original shipping materials or the packaging in which the replacement equipment is shipped. Include a copy of the Proof of Purchase. Any items returned without a copy of the Proof of Purchase will be considered out of warranty. Follow the instructions given to you by the Customer Service Representative.