

QUICK REFERENCE GUIDE

pocketdish AV500E
PORTABLE MEDIA RECORDER

PDF Downloaded from SatelliteGuys.US
America's Favorite Satellite Information Source!

TV/LCD: press and hold to select PocketDISH or TV for viewing

TV OUT: shows that the screen content is displayed on a TV

Speaker: reproduces the audio

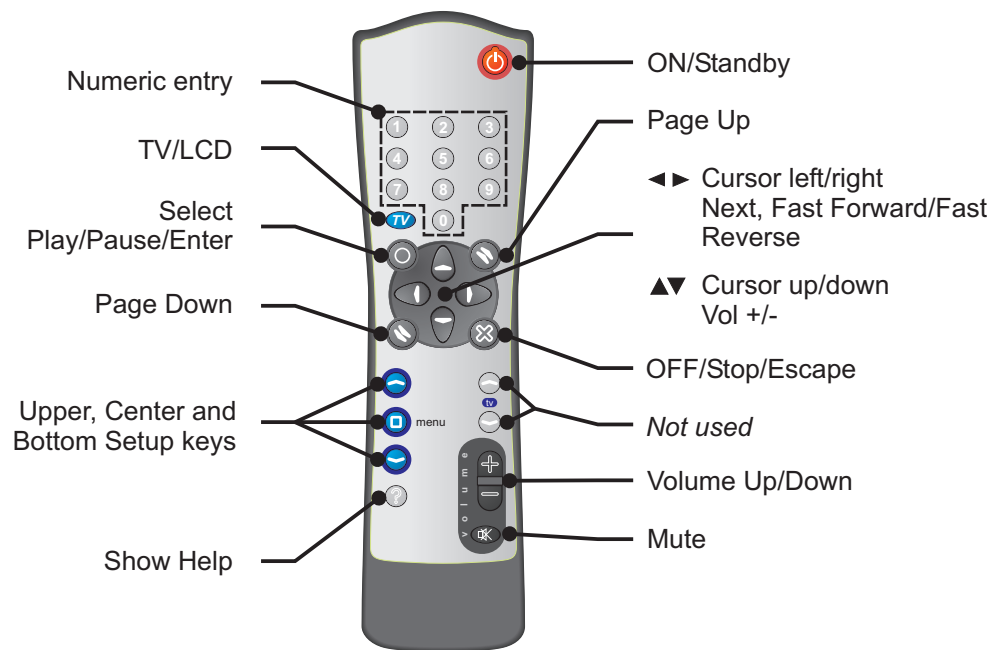
Remote control eye: receives the commands from the remote control unit

ON: shows that the PocketDISH is turned on

HDD: the hard drive is active when lit

CHG: a solid light indicates that PocketDISH is connected to the battery charger. If charging is complete, the light flashes

PocketDISH Remote Control



Docking Station



DC-IN (power): connected to the AC/DC power adapter that came with PocketDISH

Video: record video from an S-Video source. Also connect an AV-cable to the AVin port and use the red and white connections for audio

AVout: send the audio and video from the PocketDISH to a TV

AVin: record audio and video from a TV or audio device onto the PocketDISH

USB-A (Host): connect USB (mass storage device) compatible equipment, like a camcorder, digital photo camera or a USB flash drive

Microphone: for digital audio (voice) recordings

USB-B (Device): connect to a compatible DISH Network DVR or computer

Power (DC IN): connect to the AC/DC power adapter that came with the PocketDISH

Headphones/AV

Multi-connection: install the multi-connector for use with other multimedia devices

Page Up: moves the cursor up one page. Skips video and music ahead 30 seconds

◀▶: moves the cursor left/right
Previous/Next: selects previous/next file
Fast Forward/Fast Reverse: advances or reverses quickly

▲▼: moves the cursor up/down
Vol +/-: increases or decreases volume

ON: press and hold to turn on PocketDISH
Play: starts playback
Pause: pauses playback
Enter: acknowledges a selection

Page Down: moves the cursor down one page. Skips video and audio back 30 seconds

OFF: press and hold to turn off PocketDISH
Stop: stops playback
Escape: quits a selection

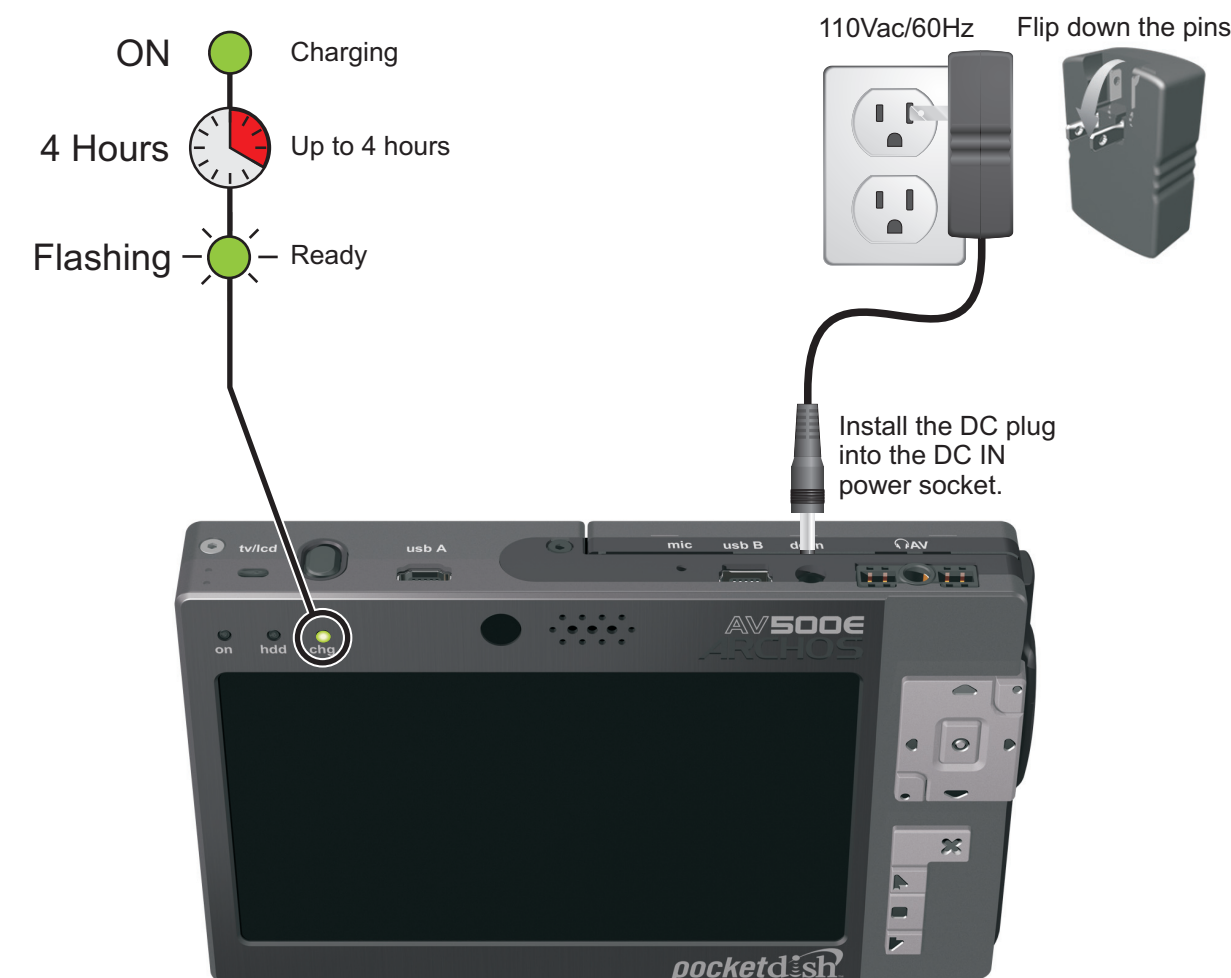
Setup Keys: to open and navigate through the Setup menus, sub-menus and options to personalize your settings
Upper Setup Key: Move the menu cursor up
Center Setup Key: Execute the highlighted option
Bottom Setup key: Moves the menu cursor down

Battery latch: Slide to open. Push the battery upwards to remove.

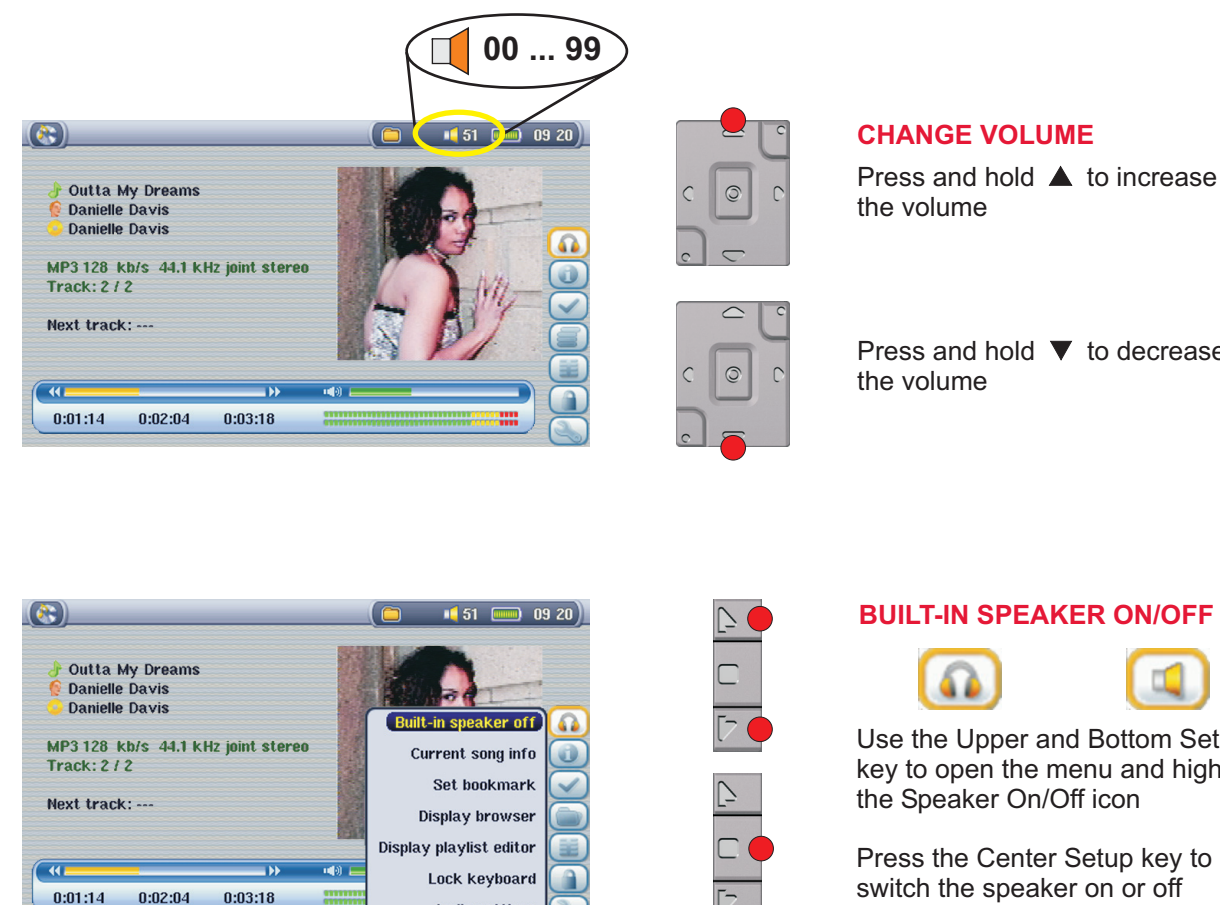
Charge the Battery

! Your PocketDISH has a rechargeable Li-Ion battery. The Li-Ion battery is a high capacity power source. Do not use another battery charger or AC/DC adapter. For your safety, charge the Li-Ion battery only with the AC/DC adapter that came with the PocketDISH. Failing to do so can cause permanent damage to equipment and can result in serious personal injury.

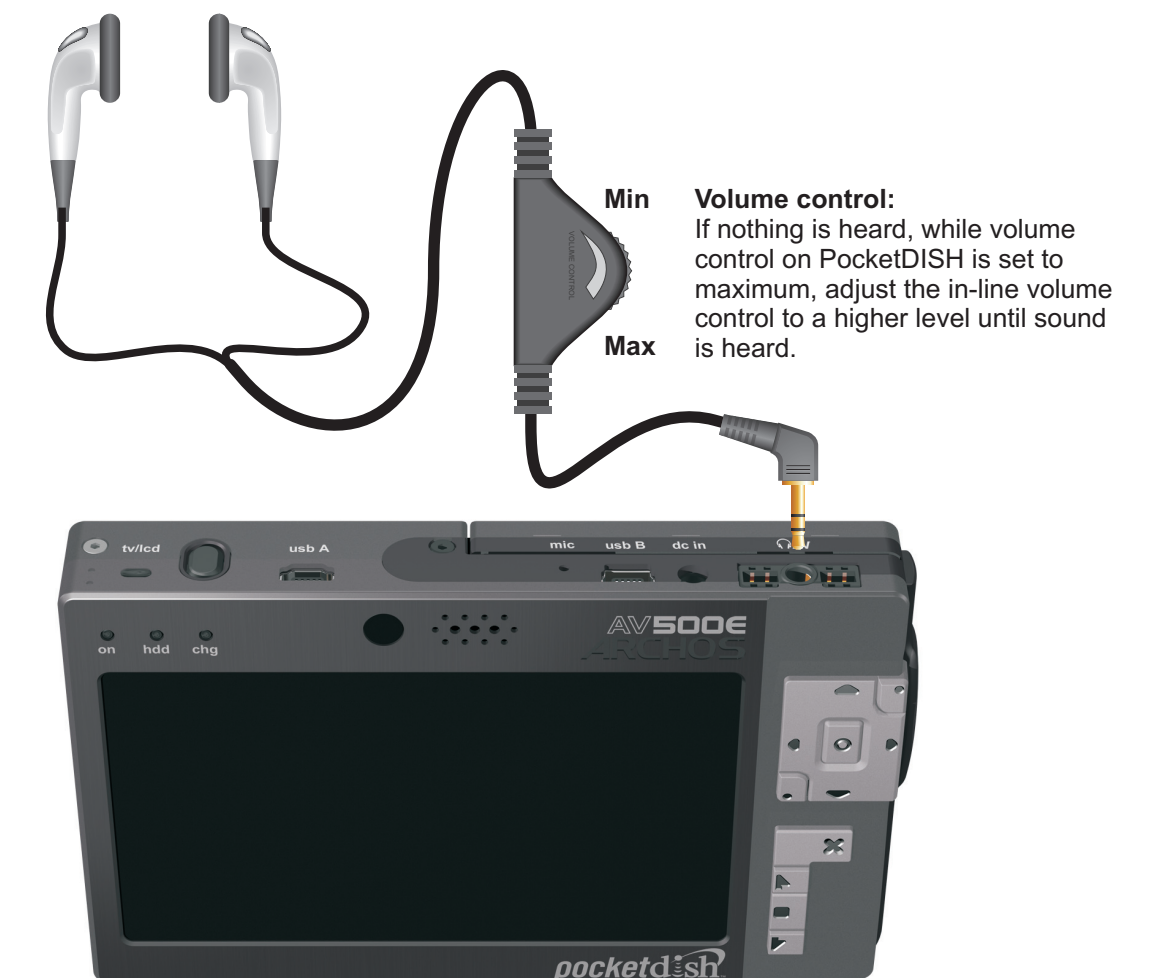
CHARGE BATTERY



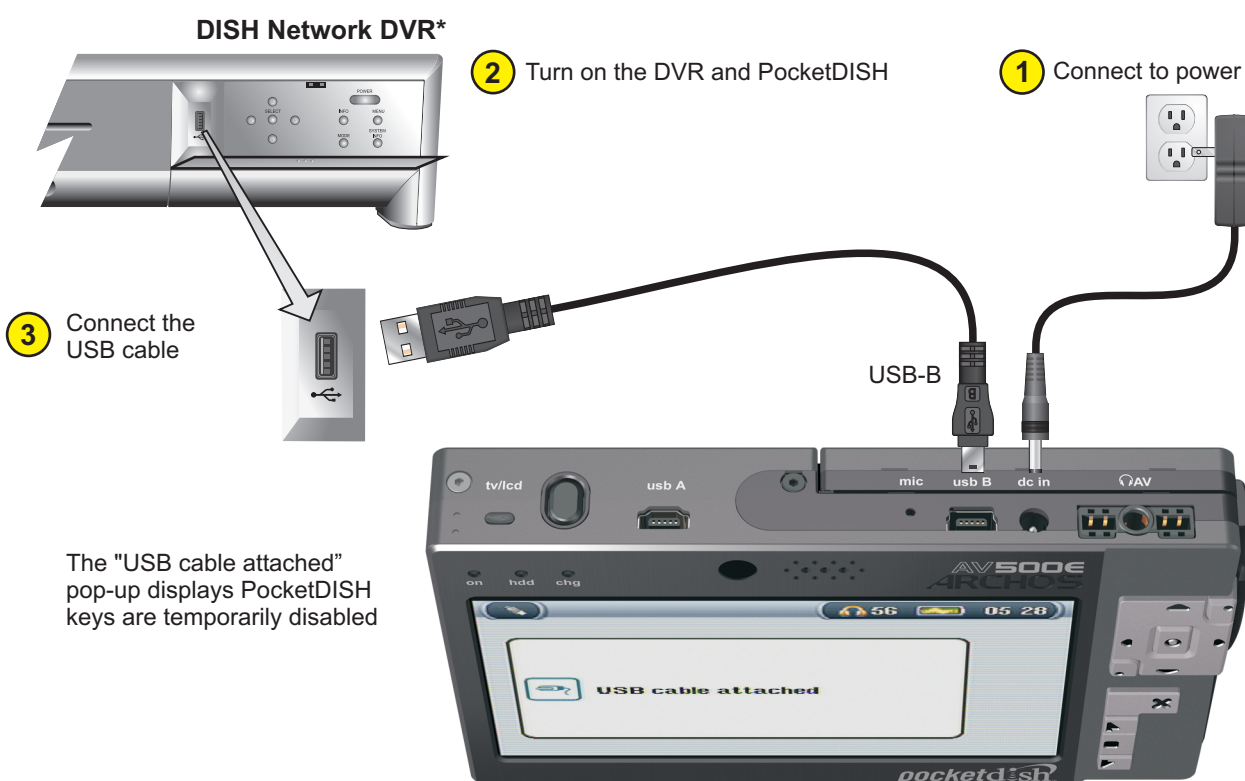
CHANGE VOLUME



CONNECT HEADSET



CONNECT A COMPATIBLE DISH NETWORK DVR



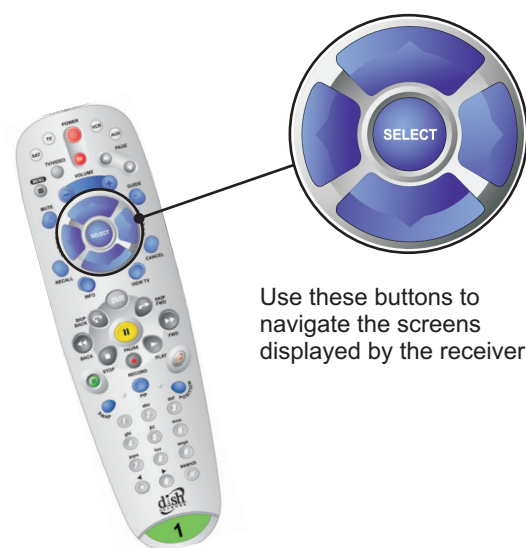
The "USB cable attached" pop-up displays PocketDISH keys are temporarily disabled

The PocketDISH pop-up displays



* visit www.pocketdish.com for list of compatible receivers

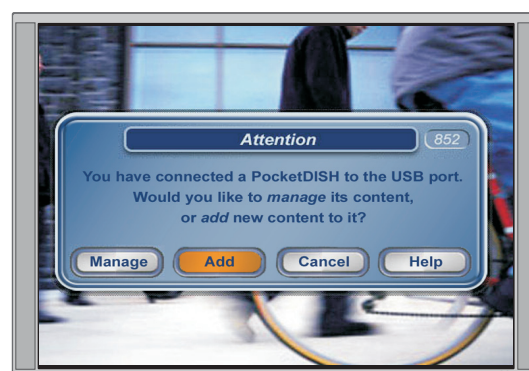
SEND MY RECORDINGS FROM THE DISH NETWORK DVR



2 Select recordings then select Send video



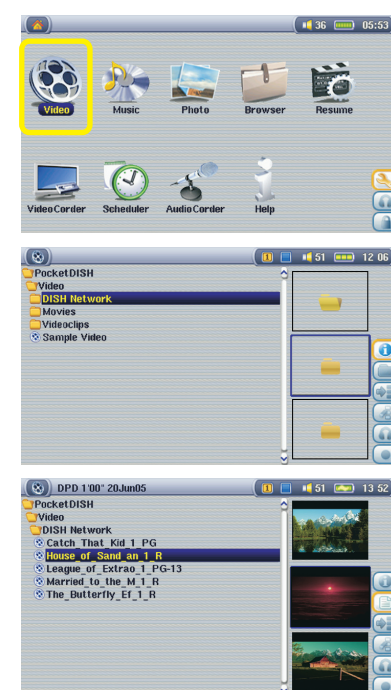
1 Select Add



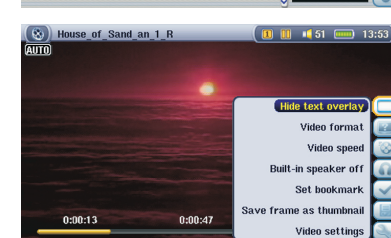
3 Press SELECT when done



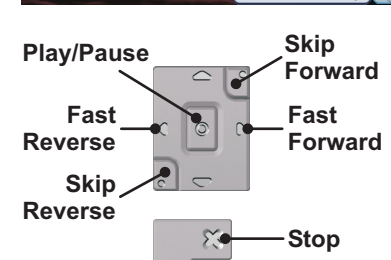
PLAYBACK VIDEO



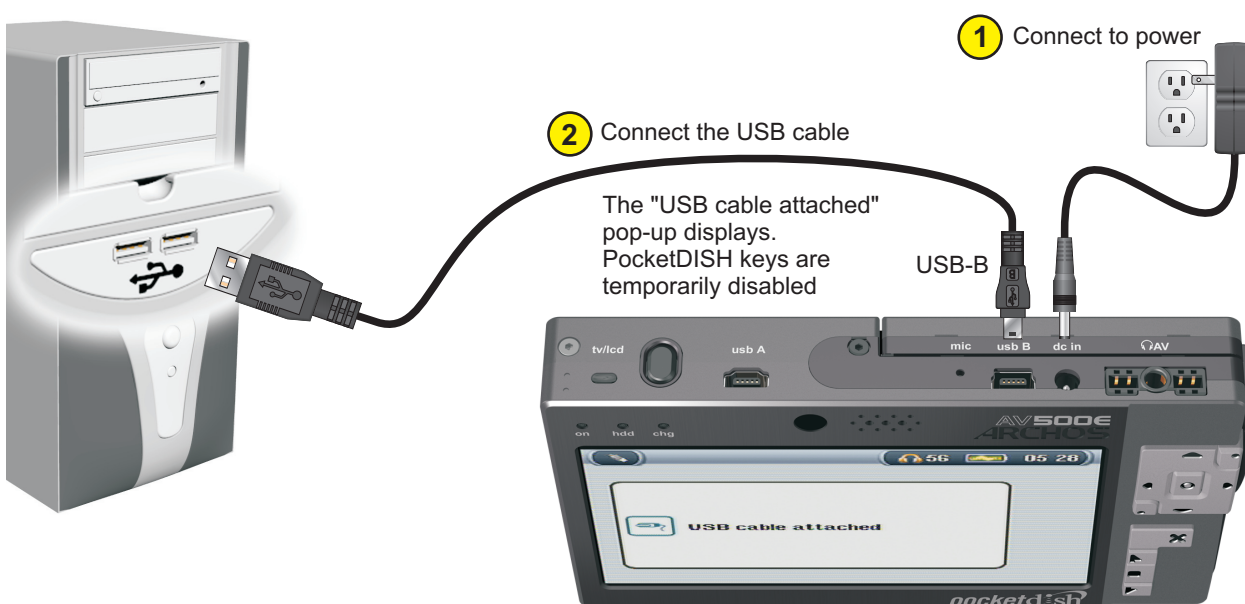
- 1 Highlight the Video icon (also used for playback of DISH Network audio recordings)
- 2 Press ON to view the video list
Note: PocketDISH comes with demo videos
- 3 Highlight the DISH Network folder and press ON to view the video files
- 4 Select the desired video file



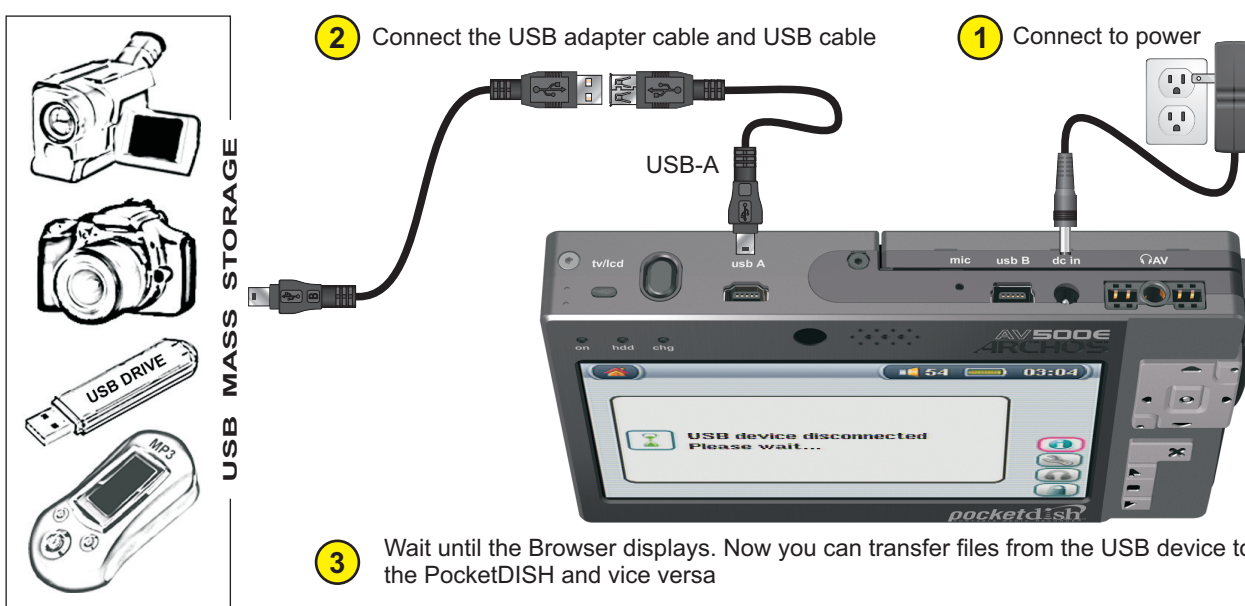
- Removes the on-screen menu temporarily
- Auto (Best playback size with respect to source), Maximized image (scaled playback with respect to source, some clipping might occur), Original picture (playback in original size, no clipping or scaling)
- Normal speed (default) or slow motion (1/2, 1/4 or 1/8)
- Built-in speaker on/off: to switch the speaker on or off
- Set a bookmark manually. You can always start future playback from this point forward
- Save the current scene as a thumbnail for presentation in the video browser
- PlayMode, Sound and LCD Brightness, and Video OSD controls



CONNECT A COMPUTER OR A USB MASS STORAGE DEVICE

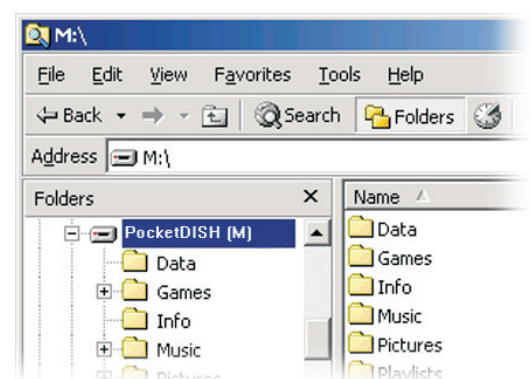


The "USB cable attached" pop-up displays. PocketDISH keys are temporarily disabled

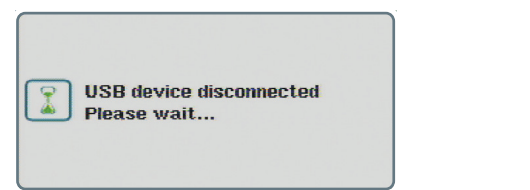


3 Wait until the Browser displays. Now you can transfer files from the USB device to the PocketDISH and vice versa

TRANSFER AUDIO/VIDEO FILES



Safely remove USB Mass Storage Device



COMPUTER

- 1 Open Windows Explorer and locate the PocketDISH drive. Double click the PocketDISH drive to display its content
- 2 Locate the folder where your audio/video files are stored
- 3 Copy the desired files into the correct folder on PocketDISH

SAFELY REMOVE USB MASS STORAGE DEVICE

In the PC system tray (next to the clock), locate and click the "Safely Remove Hardware" icon. Disconnect PocketDISH and wait until the automatic file update is completed

USB MASS STORAGE DEVICE

Use the Upper and Bottom Setup key to open the menu and highlight the Select pane icon

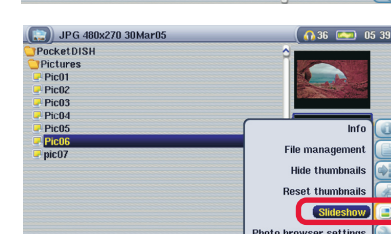
- 1 Select the desired file
- 2 Press the Center Setup key to switch between the right and left pane
- 3 Press the Upper Setup key and select the Copy or Copy all files option. Press the Center Setup key to acknowledge the transfer from your USB device to PocketDISH

When the transfer is completed, turn the USB device OFF. Remove the USB cable and wait until the automatic file update on PocketDISH is completed

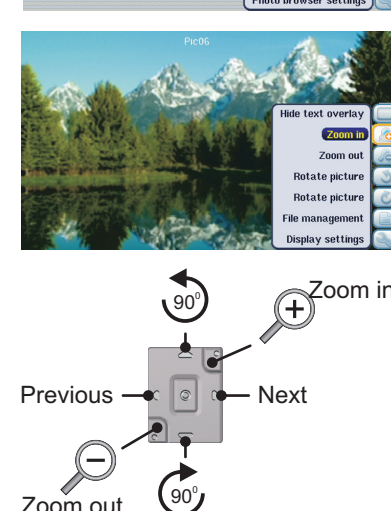
VIEW A PHOTO OR SLIDESHOW



- 1 Highlight the Photo icon
- 2 Press ON to view the folder content
Note: PocketDISH comes with demo photos
- 3 Highlight the desired photo
- 4 Press ON to view the single photo



- ### TO VIEW A SLIDESHOW
- 1 Use the Upper and Bottom Setup key to highlight the Slideshow icon
 - 2 Press the center Setup key to select



- Removes the on-screen menu temporarily (1-Pic view only)
- Magnifies the photo up to three times (refer to the + marks in the display)
- Minimizes the photo. Note that beyond original size, more photos are shown, up to 9 at the time
- Rotates the photo counter-clockwise (1-Pic view only)
- Rotates the photo clockwise (1-Pic view only)
- Accesses the file options - Info - Save as wallpaper - Delete
- Opens the Photo menu (Image Display - Progressive or Interlaced, Picture Pause - 2-30 seconds, Pictures to display - 1, 4 or 9 at the time)

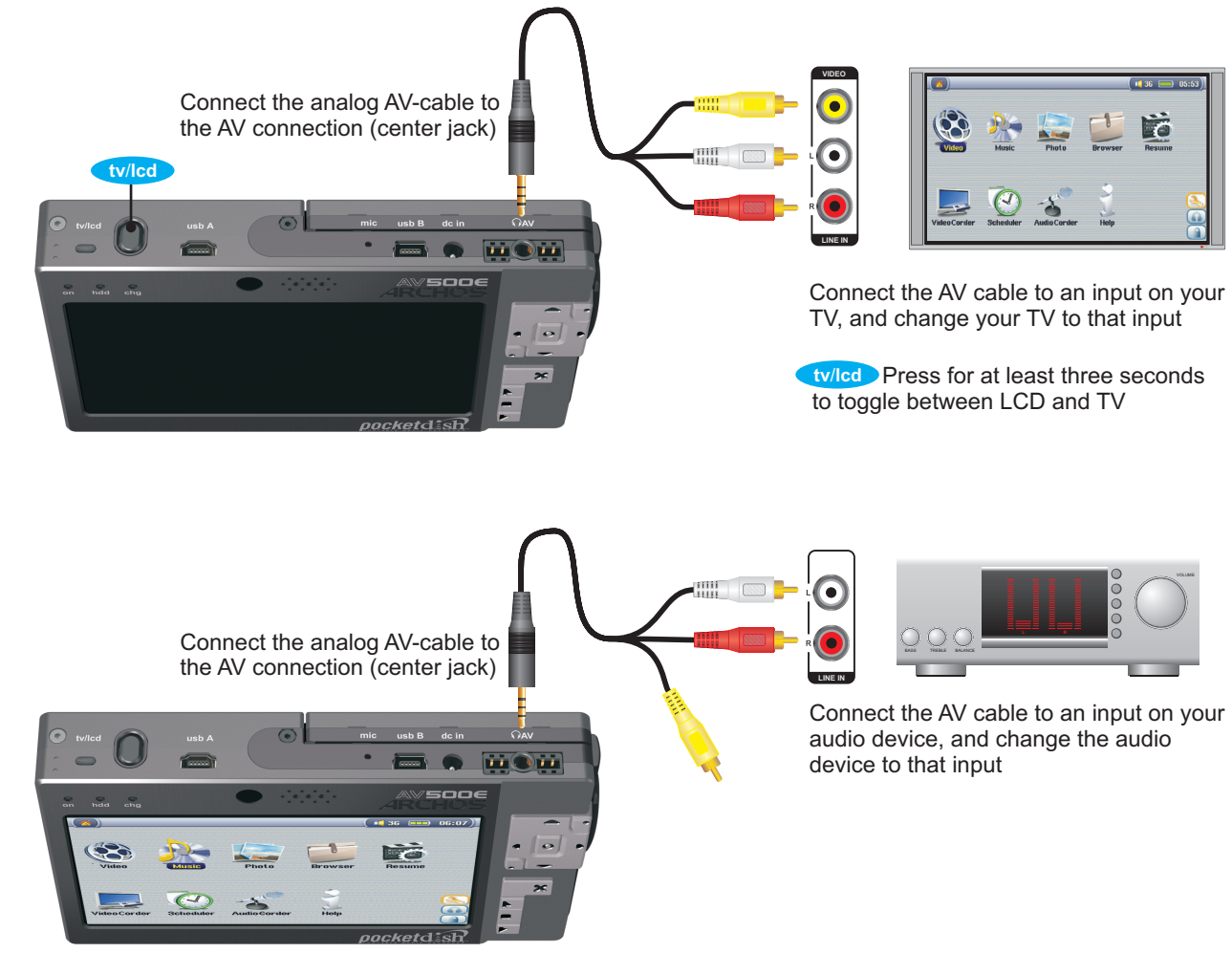
PLAY A SONG



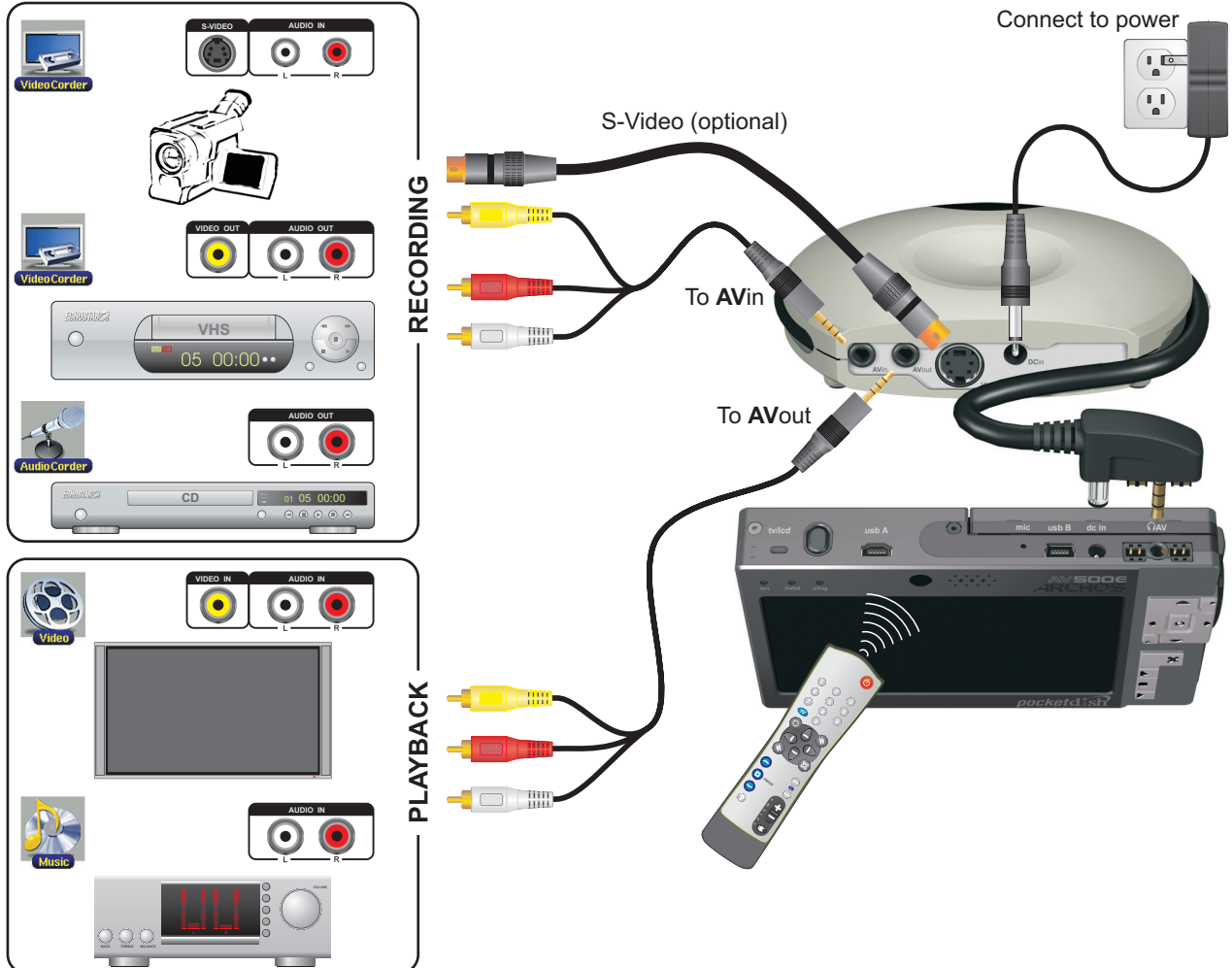
- 1 Select the Music icon
- 2 Press ON to view the folder content
Note: PocketDISH comes with demo songs and Playlist
- 3 Make your selection from the ARCLibrary by Artist, Album, Title, Genre or Year
Playlist: select a playlist to playback multiple songs
- 4 Select the desired song and press ON

Press OFF to end playback

CONNECT A TV OR AUDIO DEVICE (PLAYBACK)



CONNECT THE DOCKING STATION



USER'S GUIDE
Provides detailed instructions about your PocketDISH

HARD DRIVE
Contains helpful videos, demos, tools and documentation

FAQ
FIND AN ANSWER
On the Internet, please visit www.pocketdish.com

IF YOU NEED ASSISTANCE
Call the Archos Customer Service Center at 1-877-300-8879 (toll free).

dish NETWORK
Appearances and specifications may change without prior notice
© 2005 EchoStar Technologies Corporation. All rights reserved worldwide.