

Traxis DBS3500

Software Release



AC3 solution fix

10/5/07

Release by:

DMS International

320 Northpoint Parkway SE

Suite B & C

Acworth, GA 30102 USA

Tel: 770-529-6800

Fax: 770-529-6840

Web site: <http://www.dmsiusa.com>

Sales: sales@dmsiusa.com

Technical: tim@dmsiusa.com

Make sure that NULL serial cable is connected between PC and the Set-Top Box (STB), and that the STB is powered OFF.

It is advised that before upgrade, change the OSD Language of the STB to English.

1. Run [Upgrade.exe] Fill in the information for upgrading; refer to Figure 1 and 2.
 - (i) Select the binary file. Press Browse.



Figure 1. Fill in Upgrade Information

- (ii) Select the correct COM port

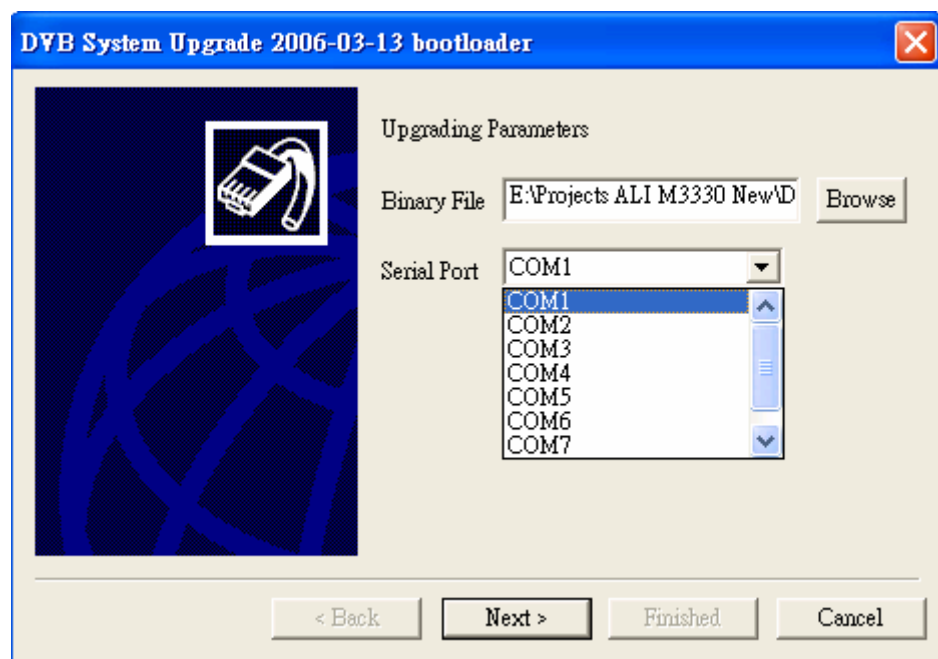


Figure 2. Fill in Upgrade Information

DBS3500 RS-232 PC-to-Box Upgrade How To

2. Press Next to start upgrading, refer to Figure 3.

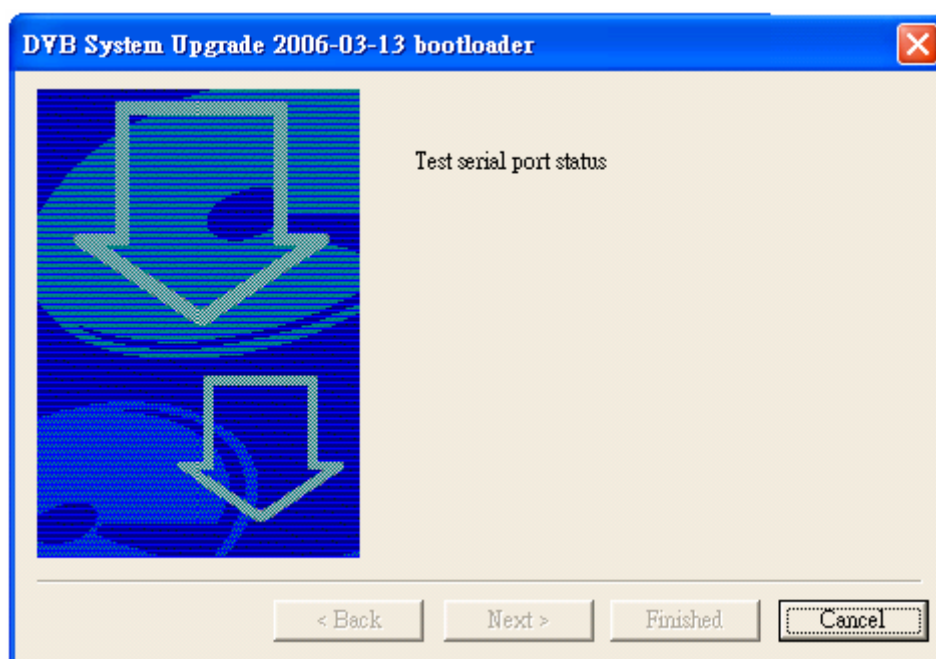


Figure 3. Waiting for STB to power on

Power ON the STB from hard switch. The STB should turn on automatically. Refer to Figure 4.

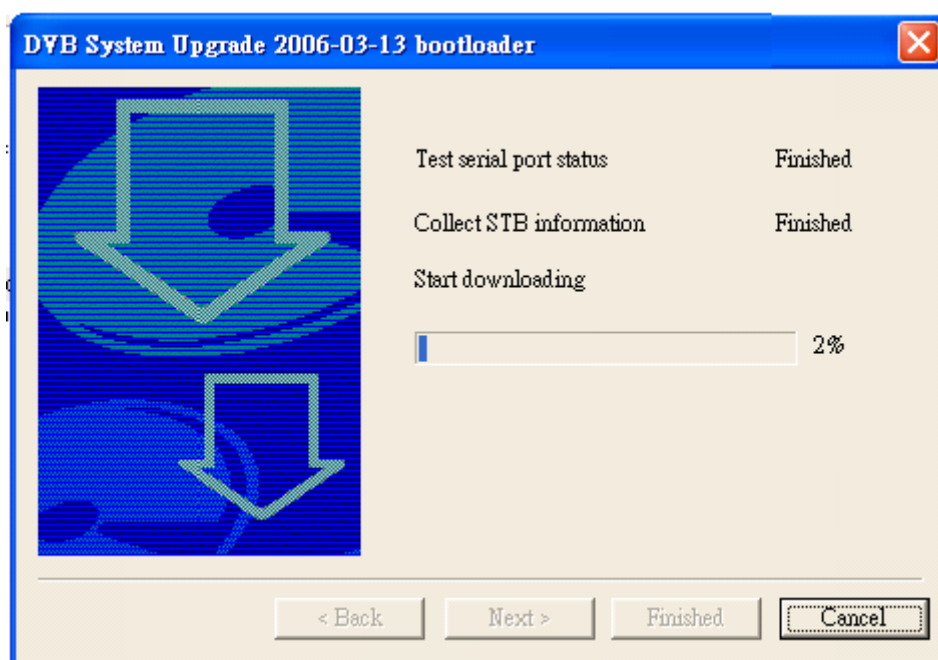


Figure 4. Downloading code

DBS3500 RS-232 PC-to-Box Upgrade How To

3. When finished, screen is shown as Figure 5, click NEXT to start burning.

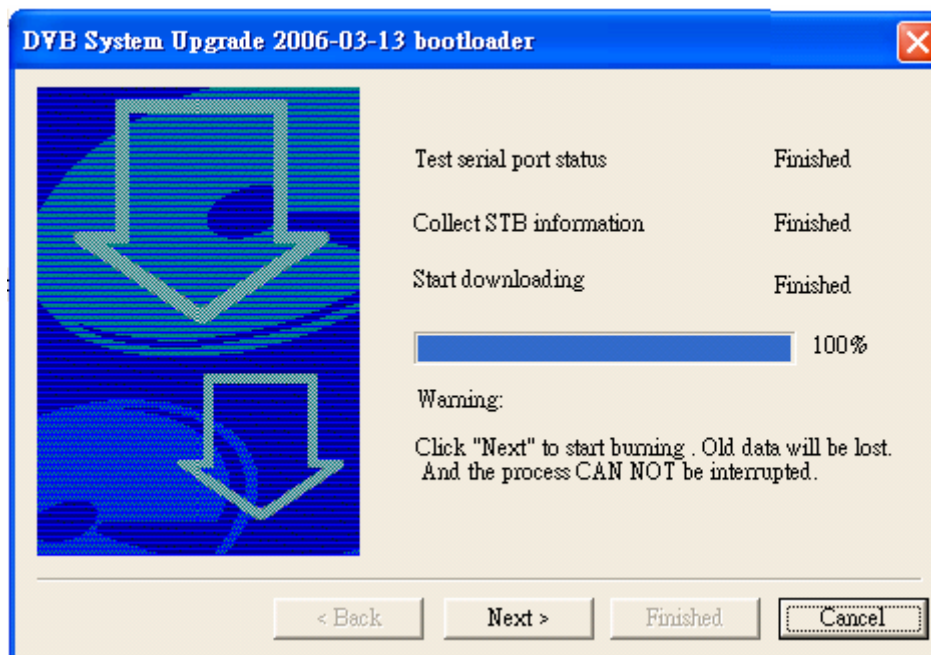


Figure 5. Download finished, wait to start burning

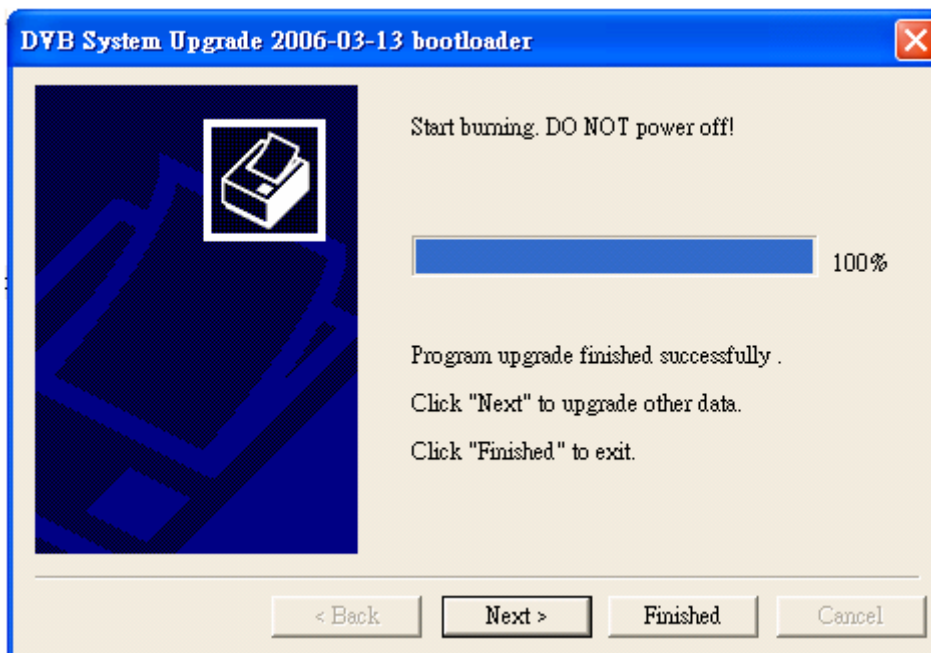


Figure 6. Finished burning

4. Click Next to upgrade other data or click Finish to exit.

This tool has not been properly tested, so it can only be used for your benefit and for this occasion only.

5. Remove the NULL modem cable.
6. Connect the STB properly, power on the switch.
7. Press STBY to turn on the box.
8. Please perform factory default, this can be done on under Tools Menu.