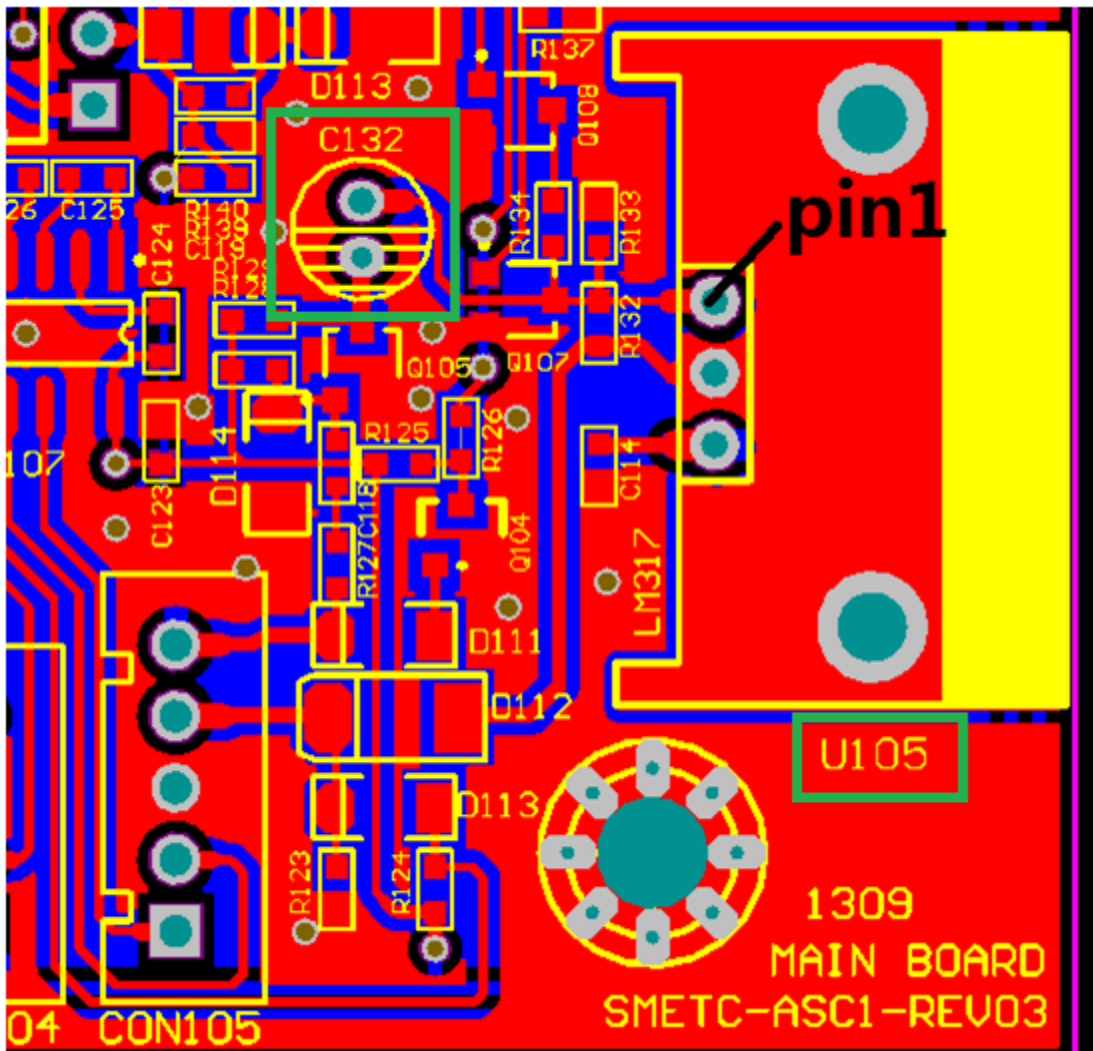


22KHz / DiSEqC Pass-Through

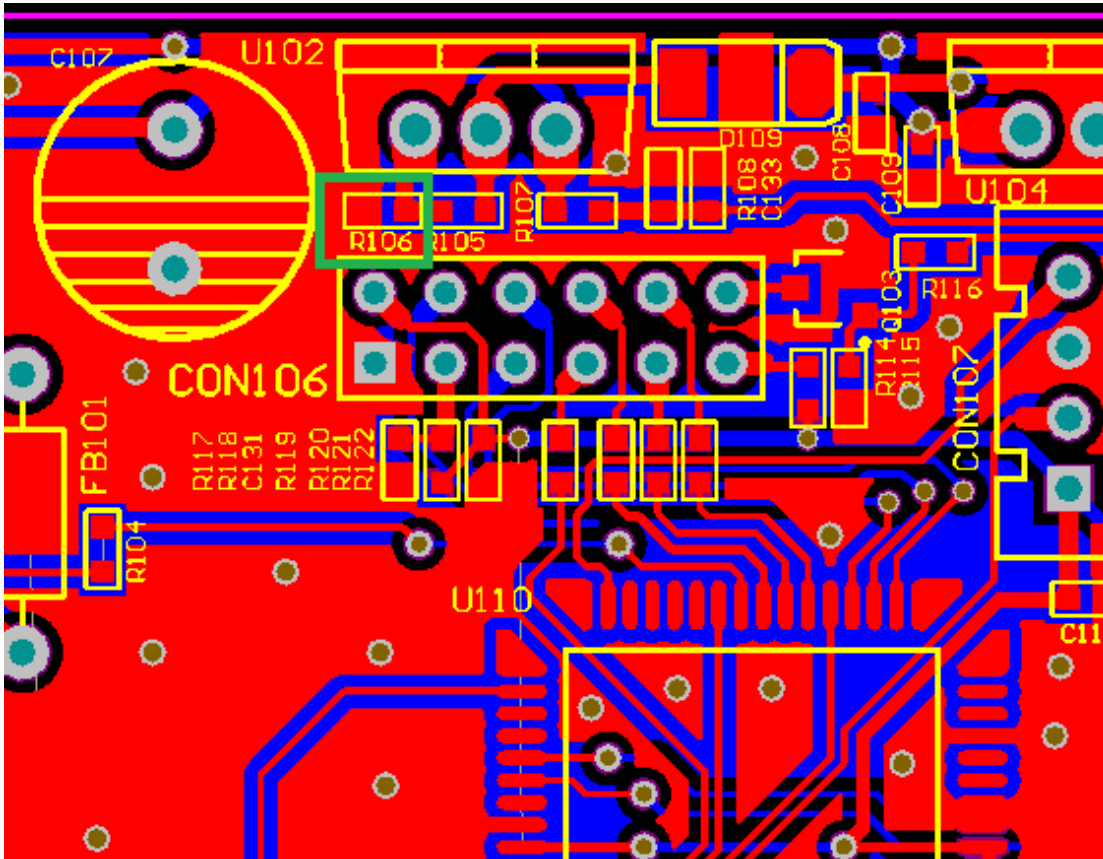


Parts:

- 1 – 10nF capacitor (10nF, 50V, $\pm 10\%$, ceramic disc)
- 1 - 3.3K resistor (3K3, $\pm 5\%$, 1/10th watt, 0603 / Example: Uniohm part 060332T5E)
- 1 - 4.7K resistor (4K7, $\pm 5\%$, 1/10th watt, 0603 / Example: Uniohm part 060472T5E)
- 1 - 100nF capacitor (100nF, 50V, $\pm 10\%$, X7R, 0603 / Example: Samsung part CL10B104KB8NNNC)

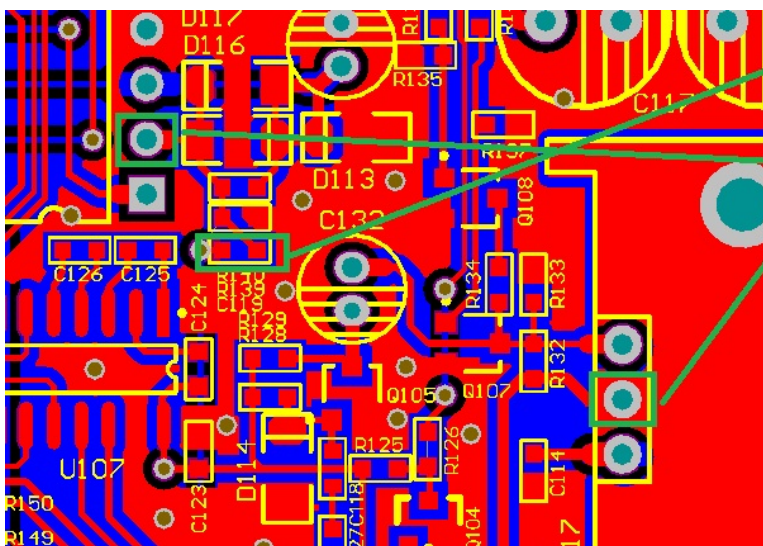
STEPS:

1. Remove the capacitor (package type 0603) that is connected with Pin 1 of U105 on the back of PCB.
2. Remove capacitor C132.
3. Using the two pads of C132 replace with one 3.3K resistor (package type 0603) in series with one 100nF capacitor (package type 0603). The resistor is connected to the pad with Q105, the capacitor is connected to the pad with Pin1 of U105.



4. Remove resistor R106 (package type 0603), replace with one 4.7K resistor (package type 0603).

STB DiSEqC 1.2 Compatibility



1. Remove C119

2. Connect the 2 pins by a 10nF cap.

5. Remove capacitor C119 (package type 0603).
6. Connect Pin 2 of U108 to Pin 2 of U105 with a 10nF, 50v disc ceramic capacitor.