

Digital
Receiver

Nano²
conaxsat

The User's Manual

Please read this User's Manual Carefully
before installing this Receiver



Nano²
digital Satellite Receiver



Rev 1.1



TABLE OF CONTENTS

GENERAL SAFETY	2
GENERAL INFORMATION	3
I.UNPACKING	3
II.FEATURES	3
III. REMOTE CONTROL UNIT (RCU)	4
IV. FRONT PANEL	6
V. REAR PANEL	7
INSTALLING EQUIPMENT	8
CHANNEL LIST GUIDE	9
MENU GUIDE	11
MAIN PAGE	11
I.CHANNEL MANAGER	11
II. INSTALLATION	13
III. OPTIONS	18
IV. UTILITY	20
TROUBLESHOOTING	21
SPECIFICATIONS	22

GENERAL SAFETY

WARNING

Please read the following recommended instructions carefully to avoid the risk of your physical injury before the product is operated.

Do not cover the receiver and keep clear space around the receiver for sufficient

Check the receiver's operation voltage 90~250V, 50Hz~60Hz Max, 40W
Keep liquid away from the receiver.

The receiver shall not be exposed to dripping or splashing and no objects that filled with liquid shall not be placed on the receiver.

Unplug the receiver from the wall outlet before cleaning.
Use a soft cloth and a mild solution of washing-up liquid to clean the casing.

Do not block the receiver's ventilation slots which are provided for ventilation and protection from overheating.

Please maintain the receiver in a free airflow.

Do not allow the receiver to be exposed to hot, cold or humid condition.

Do not use any cable and attachment that are not recommended as these may damage your equipment.

Please unplug the receiver from the wall outlet and disconnect the cable between the receiver and the antenna when you will not use it for long time.

Do not remove the cover to reduce the risk of electric shock.

Do not attempt to service the receiver yourself.

Refer all serving to qualified service personnel.

Manual may be updated as new features/Options are added.
For more information, please visit www.conaxsat.com

GENERAL INFORMATION

I. UNPACKING

Please ensure that the following items are included with the receiver in your packing.

- 1) Remote Control Unit (RCU)
- 2) Batteries (2EA)
- 3) User's Manual
- 4) A/V Cable
- 5) 4x1 DiSEqC Switch

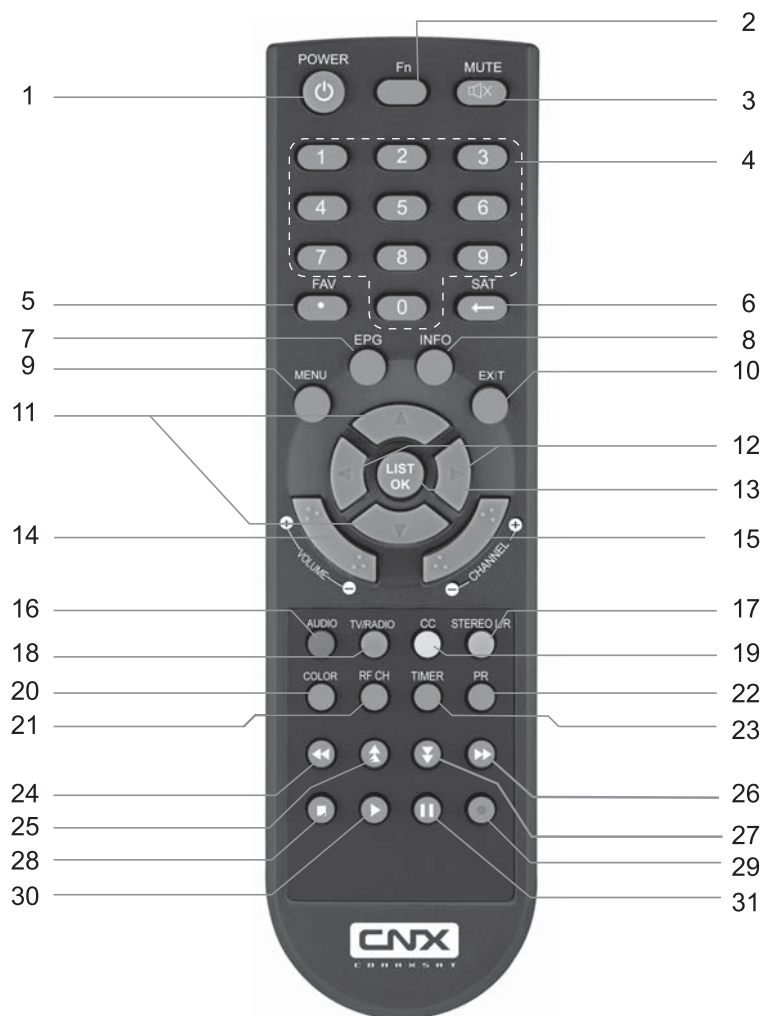
II. FEATURES

- MPEG-2 Digital & Fully DVB-S compatible.
- DiSEqC 1.0, 1.2 and USALS Compatible.
- 5,000 Channels Programmable.
- Blind scan (Power Scan) & Powerful EPG.
- Picture In Graphic (PIG).
- Electronic Program Guide (EPG) for On Screen Channel Information.
- On-Screen Display with 65,536 Color.
- Dolby Digital Bitstream Out through S/PDIF.
- CVBS Video & Audio Output via RCA .
- Component Y/Pb/Pr Output via RCA.
- S-Video Output.
- "Upgrade Software & Update Channel Database through USB and RS232".
- MP3/JPEG File Play via USB.
- Home Streaming Support

GENERAL INFORMATION



III. REMOTE CONTROL UNIT (RCU)



GENERAL INFORMATION

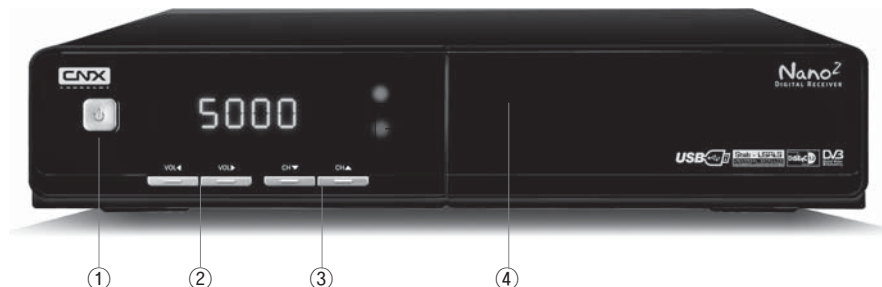


III. Function(Fn) Theme Search in normal live TV mode. Program Search in EPG mode.

- | | |
|--------------------|---|
| 1. POWER | Switches the receiver between operation and standby mode. |
| 2. Fn (function) | Enables Theme Search in normal live TV mode and Program Search in EPG mode. |
| 3. MUTE | Enables or disables the audio. |
| 4. Numeric buttons | Selects the TV or Radio service channels and individual menu. |
| 5. FAV (favorite) | Toggles the selected favorite mode. |
| 6. SAT (satellite) | Toggles the selected Satellite list. |
| 7. EPG | Displays the TV or Radio Electronic Program Guide. |
| 8. INFO | Displays the program information box on the screen. |
| 9. MENU | Displays the main menu on screen. |
| 10. EXIT | Returns to the previous menu or normal viewing mode from a menu. |
| 11. ▲ ▼ | Changes channels or moves selection up or down in the menu. |
| 12. ◀ ▶ | Adjusts the volume or moves selection left or right in the menu. |
| 13. OK/LIST | Executes the selected item and displays channel lists in normal live TV mode. |
| 14. Volume | Adjusts the volume up or down. |
| 15. CHANNEL | Changes channels up or down. |
| 16. AUDIO | Changes the audio languages. |
| 17. STEREO L/R | Selects the sound mode (LEFT/RIGHT/STEREO). |
| 18. TV/RADIO | Switches between TV and Radio. |
| 19. CC | Enables Closed Caption (Make sure TV Closed Caption is on). |
| 20. COLOR | Displays Picture Adjustment to adjust the picture quality. |
| 21. RF CH | Switches RF CH3 and CH4. |
| 22. PR | Switches to previous viewing channel or displays Channel History if enabled in OSD Setup. |
| 23. TIMER | Displays Timer menu page for reserve recording or event timer. |
| 24. ◀ REW | Starts reverse playback and changes the speed of reverse playback. |
| 25. ▲ PG UP | Enables Zoom Function in normal live TV mode and moves a page up in the list. |
| 26. ▶ FF | Starts fast forward and changes the speed of forward playback. |
| 27. ▼ PG DOWN | Enables Sleep Timer in normal live TV mode and moves a page down in the list. |
| 28. STOP | Stops recording or playback. |
| 29. RECORD | Records the program. Toggles from Record, Event Timer and cancel in EPG mode. |
| 30. PLAY | Displays file lists normal live TV mode and plays slow/normal recorded files. |
| 31. PAUSE | Pauses live TV and playback. |

GENERAL INFORMATION

IV. FRONT PANEL

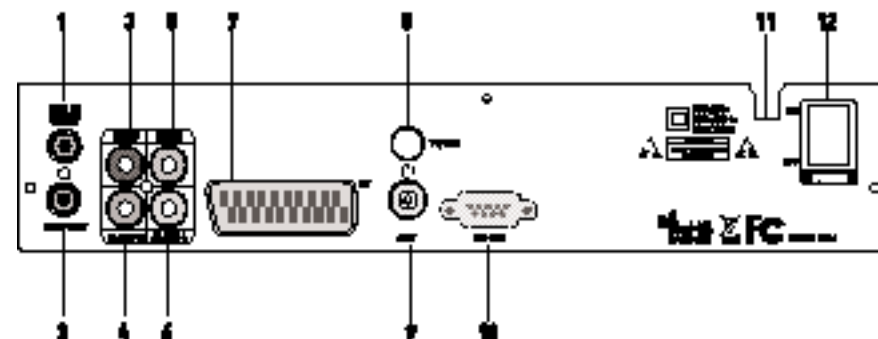


- | | |
|----------------|--|
| 1. POWER | Switches the receiver power On and Standby. |
| 2. VOL Up/Down | Volume up/down or selects the item of Menu. |
| 3. CH Up/Down | Channel up / down or selects the item of Menu. |
| 4. USB PORT | To upgrade firmware |

“All USB 2.0 devices may not be compatible with the product”

GENERAL INFORMATION

V. REAL PANEL



- | | |
|------------------|---|
| 1. SAT IN | Connects to Satellite antenna cable. |
| 2. LOOP OUT | Connects to another STB. |
| 3. DIGITAL AUDIO | Output for connecting to a digital amplifier. |
| 4. AUDIO-R | Connects to AUDIO RIGHT to TV or other equipment. |
| 5. VIDEO | Connects VIDEO to the TV or other equipment. |
| 6. AUDIO-L | Connects to AUDIO LEFT to TV or other equipment. |
| 7. TV SCART | Connects to TV SCART cable. |
| 8. TV/VCR | Connects to TV or VCR. |
| 9. ANT | Connects to TV antenna input. |
| 10. RS 232 | Connects to personal computer for software upgrade. |
| 11. POWER SUPPLY | 90~250V AC, 50/60Hz, 30W. |
| 12. POWER BUTTON | Turns On/Off. |

INSTALLING EQUIPMENT

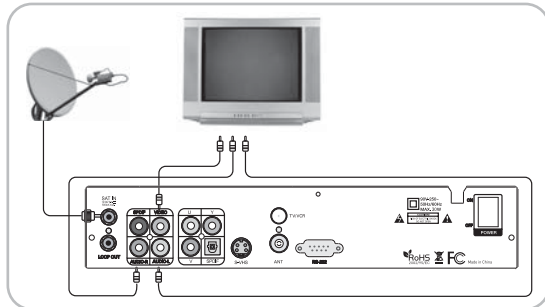
This section explains several ways of connecting the receiver to your existing TV, VCR and Hi-Fi system.

You can choose one of the following setups that we recommend.
If you have any problem or need help, consult your dealer or service provider.
Please ensure that the following items are included with the receiver in your packing.

I. CONNECTING THE RECEIVER TO TV AND VCR WITH CINCH CABLE

I-1. Connecting the receiver to TV with the CINCH cable

Connect one end of the CINCH cable to the Audio-R(Red), the Audio-L(White) and the Video(Yellow) socket on the rear panel of the receiver and the other end to the Audio-R(Red), the Audio-L(White) and the VIDEO (Yellow) socket on the TV.

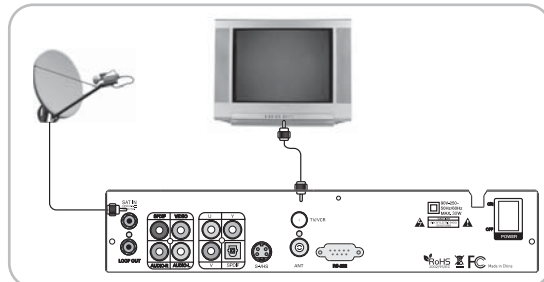


II. CONNECTING THE RECEIVER TO TV AND VCR WITH RF CABLE

II-1. Connecting the receiver to TV and VCR with RF cable

Connect one end of the RF cable TV/VCR socket on the rear panel of the receiver and the other end to the ANT IN on the TV.

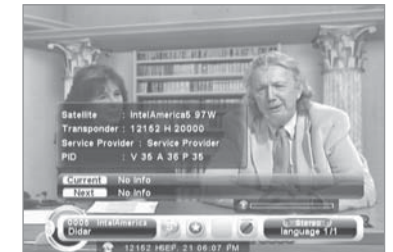
Connect one end of the RF cable to the ANT socket on the rear panel of the receiver and the other end to the ANT OUT on the VCR.



CHANNEL LIST GUIDE

1. Normal Live Mode

- When you select one channel, information bar appears automatically on the screen for few seconds. This bar provides you the current channel information.
- Press INFO button to see the information during normal live mode.



2. Simple Channel List

- Press OK on the normal live mode to go to the channel list.
- When detail channel list is displayed on screen press RED button to go to simple channel list.



3. Detail Channel List

- Press OK on the normal live mode to go to the channel list.
- When simple channel list is displayed on screen press RED button to go to detail channel list.
- Press ◀▶ and ▲▼ to sort by Alphabet.
- Press SAT button to sort by Satellite and FAV button for Favorite 1-8.
- Press GREEN button to return to All Channel or EXIT to return to the current live channel.
- Press the SAT key to show Satellite Pop-UP Window then select satellite. Channel list of selected satellite will be displayed.
- Press the FAV key to show Favorite Pop-UP Window then select FAV list. Channel list of selected FAV will be displayed.
- Press the Green key then all searched channel list will be displayed.
- Press MENU key then cursor will move to ALL, placed on the left.
- Sort Key (Yellow Key)-A~Z/Z~A/FAT/CAS.
- Press Yellow key for sorting A~Z/Z~A/FAT/CAS. If you want to go back to unsort from the selected CAS go back to Pop-UP Window then select unsort.



CHANNEL LIST GUIDE

4. EPG (Electronic Program Guide)

- Press EPG button on the live mode.
- EPG of the current channel appears on the screen.
- Select the channel that you want to watch program.
- To reserve program with recording function, press REC(●) button once.(PVR model only)
- Red Circle will appear like the right side picture.
- If you reserve program, then it will be record automatically at reserved time.(PVR model only)
- To activate event timer, press REC(●) button twice.
- Green Circle will appear.
- If you like to cancel reserved program, press REC(o) button until Red or Green Circle disappears.
- Press OK button twice to return to current live channel.



5. ZOOM IN/OUT

- By selecting page up key (▲) in a normal live mode you can use Zoom In/Out function.
- From the Pop-Up Window of Zoom function you can select(*2*3*4)by page up key(▲), for Zoom out press page down key.
- When you move cursor of Zoom focus by key (◀ ▶ ▲ ▼) then you can select Zoom In/Out on the focused point by pressing page up/down keys. Press Pause key then live mode will be paused on the mode of Zoom.



MENU GUIDE

Main Page

Press the MENU button on the RCU to open Main Page on the screen. Main Page will be displayed.

- You can move into the main page using ▲▼◀▶ on the RCU.
- Press OK to confirm your selection.
- Press EXIT to return to the previous menu or press MENU to go to the current live channel.

- Channel Manager
- Installations
- Options
- Utility
- Accessory



I. Channel Manager

This section may help you to organize channels according to your preference.

- Select Channel Manager in the Main Page with ▲▼ and press OK.
- TV Channel Manager Page displays on the screen.
- Select the mode that you want using ◀▶.
- To see the channel that you choose, go to the channel and then press RED button.
- Press EXIT to return to the previous menu or press MENU to go to the current live channel.

- Favorite
- Rename
- Move
- Lock
- Delete

I-1. Favorite

- Using ◀▶ go to the Favorite mode then press YELLOW button to choose Favorite 1~8.
- Press OK on the channel that you want to add or delete.
- ☆ will be marked at the end of selected channel name bar. To delete press OK again.
- Selected channels will be automatically saved.
- If you want to check the saved Favorite Channel List go to other mode(Rename~Delete) except Favorite and then press FAV button to check Favorite 1~8.
- Press EXIT to return to the previous menu or press MENU to go to the current live channel.



MENU GUIDE

I. Channel Manager

I-2. Rename

1. Using ◀▶ go to the Rename mode.
2. Select the channel that you want to rename using ▲▼ and then press OK.
3. Keypad Dialog displays on the screen.
4. Edit the name entering NUMBERS and / or WORDS in the Keypad Dialog.
5. Press YELLOW button to rename Favorite 1~8 and press BLUE button to rename Satellite.
6. Press EXIT to return to the previous menu or press MENU to go to the current live channel.



I-3. Move

1. Using ◀▶ go to the Move mode.
2. Select channels which you want to move by pressing OK key.
3. Move cursor that you want to place on than press GREEN button.
4. Press EXIT to return to the previous menu or press MENU to go to the current live channel.



I-4. Lock

1. Using ◀▶ go to the Lock mode.
2. Select the channel that you want to lock and then press OK. A lock icon will be marked at the end of the selected channel name bar. To delete press OK again.
3. Press EXIT to go to Main Page or press MENU to go to the current live channel.



I-5. Delete

1. Using ◀▶ go to the Delete mode.
2. Select the channel that you want to delete and then press OK. A delete icon will be marked on the selected channel number. To delete press Blue button again.
3. Press YELLOW button to delete TP. Select one channel and press Blue button. All channels of that TP will be automatically selected.
4. Press YELLOW button to delete Satellite. Select one channel and press Blue button. All channels of that the Satellite will be automatically selected.
5. Press EXIT to return to the previous menu or press MENU to go to the current live channel.
6. Message Box displays on the screen.
7. Select OK on the Message Box and then press OK to delete the marked channels.



MENU GUIDE

II. Installation (Satellite)

This section may help you to set up antenna and scan satellite or transponder, etc. Select Installations in Main Page using ▲▼ and press OK. Press EXIT to return to the previous menu or press MENU to go to the current live channel.

II-1 Channel Search

II-2. DiSEqC Switch

II-3. Motor Setup

II-4. Network



II-1 Channel Search

1. You can move the cursor using ▲▼ and press OK when you select the value that you want.



a) Satellite

- Press OK to display the Satellite List Box.
- Select the proper Satellite and then press OK.

b) DiSEqC

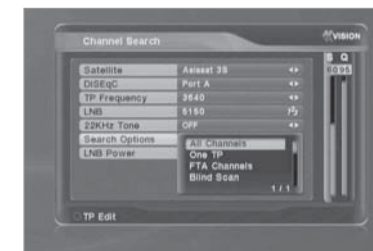
- Press OK to display the DiSEqC Port List.
- Select the proper DiSEqC port and then press OK.

c) Frequency

- Press OK to display the Frequency List.
- Select the proper Frequency and then press OK.

d) LNB

- Press OK to display the LNB Frequency List.
- Select the proper LNB Frequency and then press OK.
- You can also input directly the numbers using NUMBER KEY on the RCU.



e) 22KHz Tone

- Select the one among None, 0 KHz or 22 KHz depending on the user's antenna switch box.

f) Search Option

- Press OK to display the Search Option list.
- Select the Search Option that you want and then press OK.

g) Search

- Press Search to start scan channels.
- Selected Satellite displays on the screen.
- Press ▶ to select more Satellite or ◀ to cancel the selected Satellites.
- Press OK to start scanning.

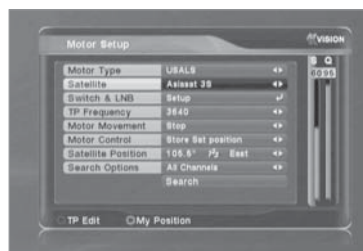
※ TP EDIT : To Edit TP, Press the RED button on the RCU.

MENU GUIDE

II. Installation (Satellite)

II-2. DiSEqC Switch

1. Select Channel Search in Installation using ▲▼ and press OK.
- a) If you select DiSEqC Switch and press OK on the menu will be, DiSEqC Switch Page will be displayed.
- b) Select the proper Satellite of each DiSEqC port [A-D] using ◀▶ and ▲▼ and press SEARCH. Selected Satellites will be searched automatically.



II-3 Motor Setup

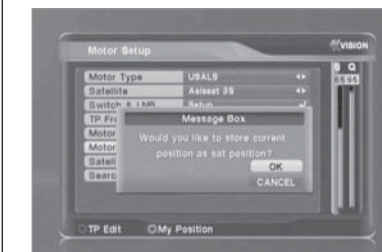
1. You can move the cursor using ▲▼ and press OK when you select the value that you want.
- a) Motor Type : DiSEqC 1.2, USAL
 - Press OK to display Motor Type
 - Select the proper Motor Type and then press OK.
- b) Satellite
 - Press OK to Display the Satellite List Box
 - Select the proper Satellite and then press OK.
- c) Switch & LNB
 - Press OK to Display the LNB frequency list or Switch Setting
 - Select proper LNB & proper Switch.
- d) Frequency
 - Press OK to Display the Frequency List.
 - Select the proper Frequency and then press OK.
- e) Motor Movement
 - Search the appropriate position of the selected Satellite using ◀▶.

MENU GUIDE

II. Installation (Satellite)

- e) Motor Control
 - Select the position using ◀▶ and then press OK. Message box displays on the screen.

- Store Sat position : Stores the current position of the motor for the selected satellite.
- Goto Sat Position : Moves the motor to the stored position of the selected satellite.
- Goto 0 : Goes to the center of the motor.
- Reset Position : Resets all stored position of the motor.



- f) Satellite Position
 - Input directly the position using NUMBER KEY on the RCU
 - Select the direction using ◀▶ (WEST / EAST).

- h) Search
 - Press Search to start scan channels.
 - Press OK to start scanning.

2. Edit my local position

- Press Green Button to edit local Position.

- a) Longitude
 - Input directly the Longitude using NUMBER KEY on the RCU.
 - Select the direction using ◀▶ (WEST / EAST).

- b) Latitude
 - Input directly the Latitude using UNMBER KEY on the RCU.
 - Select the direction using ◀▶ (NORTH/SOUTHd).

3. Press EXIT to return to the previous menu or press MENU to go to the current live channel.

MENU GUIDE

II. Installation (Satellite)

II-4. Network

This section may help you to set up network configuration.

1. IP Setup

Select one from three kinds of options for Network Setting.

a) Not Use

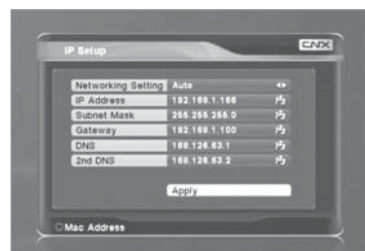
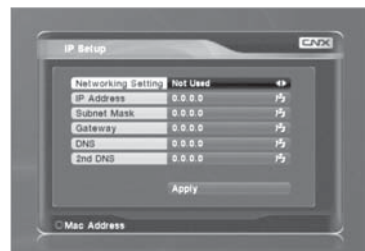
In this case, network is disabled.

b) Automatic

This is for user to use dynamic IP address service. After Select Automatic, and just push Apply button, Box will reboot by itself. Box will get a new IP from router.

c) Manual

This is for user to use static IP address service Put in with your IP address, Subnet mask and Gateway. And push Apply button, then Box will reboot by itself.



2. Home Streaming

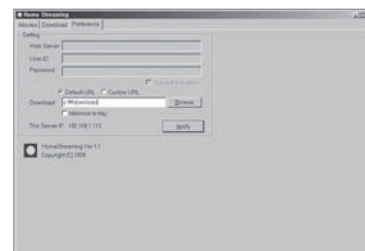
1) Setting in your PC

a) Please go to "Preference" Tab

b) Select "Use" default check-box and assign the download folder by using "Browse"

It is assigned to "c:\download" but you should specify the destination folder personally.

Please see the below picture .



MENU GUIDE

II. Installation (Satellite)

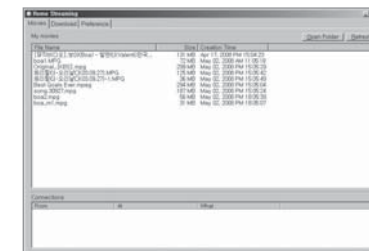
2) Configuration in your STB

a) Please go to IP Set up and click "Apply"

(Installations → Network → IP Set up)

b) Exit from IP set up and go to Home Stream Setup. User must insert Server-IP into the STB by using numeric buttons personally

c) The IP address must be the same as showed in preference of "Home Streaming program"



3) Playing the Downloaded Movie File

a) Please go to the "Movies" Tab

b) This tap shows the contents in the folder which you specified.

c) Press "Fn" key of RCU in View mode of your STB and select Network File Manager, you can see same list in TV Screen.

d) Please select the file which you want to see by using navigation keys of RCU and press "Play" to play the Movie file.



※ Please see the below picture for better understanding.



Please note : Support only Mpeg file currently!

MENU GUIDE

III. Options

This section may help you to set up OSD language, time, etc. Select Options in Main Page using ▲▼ and press OK.

Press EXIT to return to the previous menu or press MENU to go to the current live channel.

- III-1. OSD Setup
- III-2. Control Panel
- III-3. Time Adjust
- III-4. Parental Lock

III-1. OSD Setup

1. Select OSD Setup in Options using ▲▼ and press OK.

a) OSD Language

- Press OK to display OSD Language list.
- Select the language that you want and then press OK.

b) Audio Language

- Press OK to display Audio Language list.
- Select the language that you want and then press OK.

c) Display Info Bar

- Press OK to display Display Info Bar time list.
- Select the second that you want to display and then press OK.

d) OSD Position

- Press OK to change Horizontal and Vertical Position of the OSD.
- OSD Position box displays on the screen.
- Select Hor Position / Ver Position using ▲▼.
- Move the OSD Position to right/left or up/down using ◀▶.
- Select OK on the OSD Position box and then press OK.

e) Screen format

- Press OK to display screen format list.
- Select the format that you want and then press OK.

2. Press EXIT to return to the previous menu or press MENU to go to the current live channel.



MENU GUIDE

III. Options

III-2. Control Panel

1. Select TV Setup in Options using ▲▼ and press OK.

a) Video Output

- Press OK to display Video Output list.
- Select RGB if your SCART supports RGB control and then press OK.
- Select CVBS if your SCART does not support RGB control and the press OK.

b) TV Type

- Press OK to display TV Type list.
- Select the proper mode according to your TV type and press OK.

c) UHF Channel

- Press OK to display UHF Channel list.
- Select the proper channel and then press OK.

d) UHF Standard

- Press OK to display UHF Standard list.
- Select the proper mode and then press OK.

2. Press EXIT to return to the previous menu or press MENU to go to the current live channel.

III-3. Time Adjust

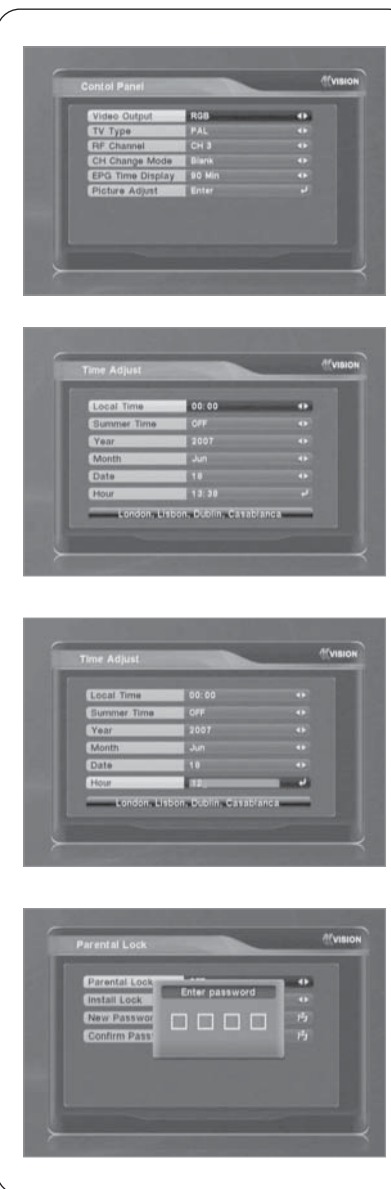
Set your local time according to your location.

1. Select Time Setup in Options using ◀▶ and press OK.
2. Time Adjust page displays on the screen.
3. Move the cursor using ◀▶, ▲▼ and press OK when you select the value that you want. (Input Hour directly using number keys on the RCU)
4. Press EXIT to return to the previous menu or press MENU to go to the current live channel.

III-4. Parental Lock Setup

1. Select Parental Lock Setup in Options using ◀▶ and press OK.
2. Parental Lock Page displays on the screen.
3. You can lock and unlock Parental Lock selecting ON or OFF using ▲▼ (For Channels).
4. You can lock and unlock Install Lock selecting ON or OFF using ▲▼ (For Installation Settings).
5. Enter new password if you want to change the current password.
6. Confirm your new password entering new password again.
7. Press EXIT to return to the previous menu or press MENU to go to the current live channel.

Note. DEFAULT PASSWORD IS 0000



MENU GUIDE

VI.Utility

This section may help you to use USB, etc.
Select Utility in Main Page using ▲▼ and press OK.

- VI-1. System Information
- VI-2. USB
- VI-3. Factory Default

VI-1. System Information

This option help you to know the current S/W and H/W version. Also provides you the product name.

1. Select System Information in Options using ▲▼ and pres OK.
2. Press EXIT to return to the previous menu.

VI-2 USB

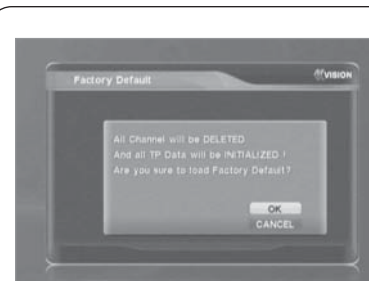
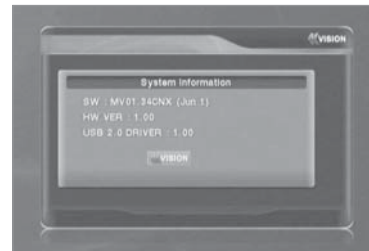
The receiver is equipped with host.

1. Select USB in Utility with ▲▼ and press OK.
2. If you want to change mode(S/W Upgrade, BootLoader Upgrade), press RED button on the RCU.
3. Select the file which you want to upgrade using ▲▼ and press OK.
4. After downloading the selected file, the receiver will reboot automatically.

VI-3 Factory Default

Use Factory Default function only when you want to return the receiver to the condition of factory default. All settings and channels will be deleted.

1. Select Factory Default in Installations using ▲▼ and press OK.
2. Message box displays on the screen.
3. Select OK to return the receiver to the condition of factory default and then press OK.
4. Press EXIT to return to the previous menu or press MENU to go to the current live channel.



TROUBLESHOOTING

Problem	Solution
Nothing appears on the Front Panel or No power supply	<ul style="list-style-type: none"> · Check that the power cable is plugged into the power socket.
No Picture	<ul style="list-style-type: none"> · Check the dish and adjust it. · Check the cable connection and correct it. · Get out of UHF mode. · Check channel and video output.
No Sound	<ul style="list-style-type: none"> · Check the volume level of the TV and receiver. · Check the mute status of TV and receiver. · Check the cable connection and correct.
Remote Control Unit dose not work	<ul style="list-style-type: none"> · Replace batteries. · Aim the remote control unit directly to the receiver. · Checking that nothing blocks the front panel.
Service is not running or scrambled	<ul style="list-style-type: none"> · Check the Conditional Access Module and smart card are appropriate for the selected service. · Check the Conditional Access Module and smart card are correctly inserted or not.
"No Signal" on the screen	<ul style="list-style-type: none"> · Check the signal strength and the signal quality in the menu. · Check the LNB and replace the LNB if necessary. · Check the LNB cable. · Check the Dish and adjust it.
Tuner Defective Check	<ul style="list-style-type: none"> · Go to the Option and select System Information.
You have forgotten your secret PIN Code	<ul style="list-style-type: none"> · Contact your Service Provider.

SPECIFICATIONS

I. Conditional Access Module Interface

Item	Specification
SMART CARD	1 SLOT, ISO 7816, GSM11.11 and EMV (payment systems) compatibility

II. Tuner & Channel

Item	Specification
Input Connector	F-type (Output loop-through), IEC 169-24, Female
Signal Level	-25 to -65 dBm
LNB Power &	Vertical: +13.5/18.5Vdc±5%,
Polarization	Horizontal : +18.5Vdc±5% Current : Max. 500mA. Overload protected
22KHz Tone	Frequency : 22±2KHz
DiSEqC Control	Amplitude : 0.8±0.2V Version 1.2, USALS Compatible
Demodulation	QPSK
Input Symbol Rate	2-45 Ms/s Convolution Code Rate 1/2, 2/3, 3/4, 5/6, 7/8 with Constraint Length K=7

III. A/V & Data Input/Output

Item	Specification
RCA Output	CVBS(Yellow), L, R Output(White,Red) with Volume Control Component Video Output
SPDIF	Dolby Digital Bitstream Out (Coaxial, Optical)
Data Interface	RS-232, Transfer rate 115Kbps, 9 pin D-Sub Male Type USB : USB 2.0, Type A Connector

IV. RF-Modulator

Item	Specification
TV Standard	NTSC
RF Connector	75 Ohms, F-type
Frequency Range	VHF CH3, CH4

SPECIFICATIONS

V. MPEG Transport Stream & A/V Decoding

Item	Specification
Transport Stream	MPEG-2 ISO/IEC 13818 / Transport stream Specification
Profile Level	MPEG-2 MP@ML
Input Rate	Max. 90 Mbit/
Video Resolution	720 × 576(PAL) / 720 × 480(NTSC)
Audio Decoding	MPEG/Musicam Layer I & II
Audio Mode	Single channel/Dual channel Joint Stereo/Stereo
Teletext	VBI & OSD
Sampling Rate	32, 44.1 and 48KHz

VI. System Resources

Item	Specification
Main Processor	ARM946 RISC Processor
Flash Memory	2 Mbyte
Program DRAM	32 Mbyte
Channel Capacity	Digital Channel: 5,000
Front	7-Segment Display (4-digit)

VII. Power Supply

Item	Specification
Input Voltage	AC 90 to 240V, 50 ~ 60Hz
Power Consumption	Max. 30W
Protection	Separate Internal Fuse
Type	SMPS

VIII. Physical Specification

Item	Specification
Size(W × H × D)	260 × 50 × 205(mm)
Net Weight	1.4Kg