

## INSTRUCTION FOR “EMUpgrade”

The “EMUPGRADE” application is a tool to upgrade the software version of your set-top-box.

Following operating systems are supported: Microsoft Windows 9x, Me, 2000 and XP.

For the installation procedure, please follow the steps below:

### 1. Installation of “EMUpgrade”

Please unzip the file “emupgrade.zip”. The new unzipped folder contains the files shown below:



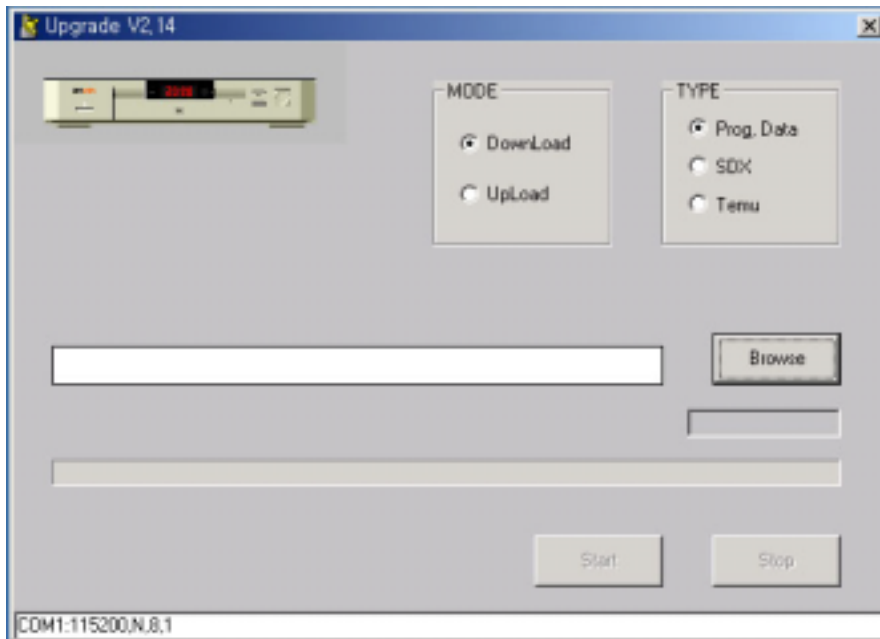
By double-clicking the “setup.exe”, the file will be executed and the installation wizard starts the installation. You only need to follow the wizard.

The default location for the “EMUpgrade” will be:

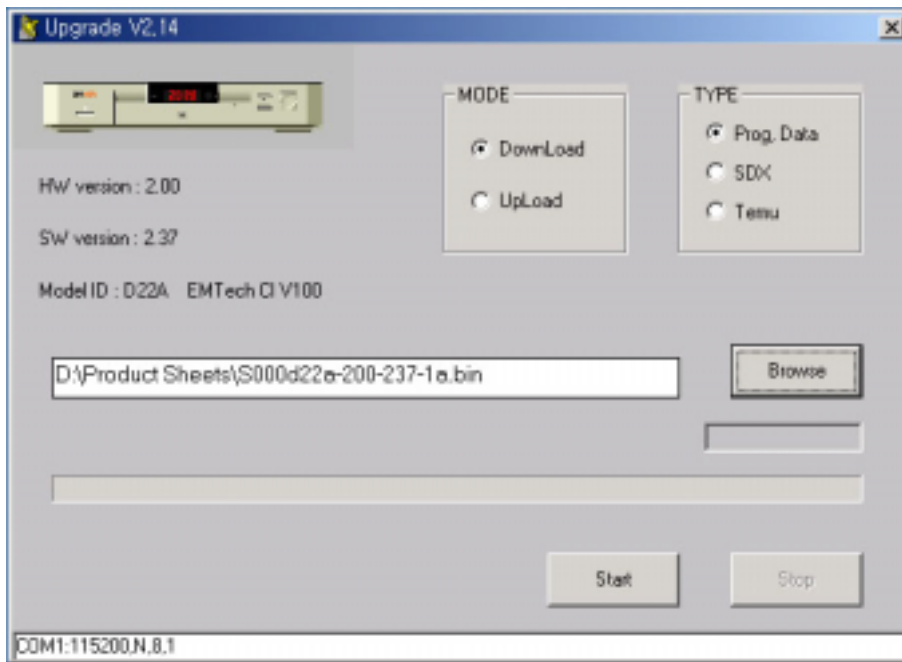
C:\Program Files\EMUpgrade\EMUpgrade.exe

### 2. How to do an upgrade with “EMUpgrade”

2.1 After opening the “EMUpgrade”, you will see the following screen



2.2 With the “Browse” button you can select the upgrade file. After the selection, the “Start” button will be highlighted.



2.3 Please click the “Start” button next and **turn your set-top-box off and on (Hard Reset).**

You can follow the upgrade procedure with “EMUpgrade” and on your TV screen.

