

# **EXTREMEVIEW**

## **MAGNUM XV 3300**

### **USER'S MANUAL**



**UNIVERSAL REMOTE CONTROL**  
**DVB Digital Video Broadcasting Receiver**



# Contents

<b>Declaration of Conformity</b>	<b>3</b>
<b>General Information</b>	<b>7</b>
Safety and Precaution	7
Accessories	9
<b>Remote Control Unit</b>	<b>10</b>
<b>System Connection</b>	<b>11</b>
Front Panel	12
Rear Panel	12
Connecting your System	13
<b>Menu Structure</b>	<b>15</b>
<b>Menu Guide</b>	<b>16</b>
Installation	16
Channel Guide	22
Channel Manager	25
System Setting	28
Games / Memo	32
Embedded CAS	34
<b>Functions Guide</b>	<b>35</b>
List Menu	35
Closed Caption	37
Info Bar	37
Signal	37
Zoom	38
Quick Edit	38
Audio Language	38
<b>Technical Specification</b>	<b>39</b>
<b>Trouble Shooting Guide</b>	<b>42</b>
<b>Universal RCU</b>	<b>44</b>
Universal Remote Control Function list	44
Universal Remote Control Unit Code	45

## Declaration of Conformity



### FCC Rule : TESTED TO COMPLY WITH FCC PART 15, CLASS B OPERATING ENVIRONMENT : FOR HOME OR OFFICE USE

This device complies with part 15 of the FCC rules. Operation is subject to the following two conditions : (1) This device may not cause harmful interference, and (2) this device must accept any interference received, including interference that may cause undesired operation.

This satellite receiver provides display of television closed captioning in accordance with 15.119 of the FCC rules.

**Caution :** Any changes or modifications in construction of this device which are not expressly approved by the party responsible for compliance could void the user's authority to operate the equipment.

**Note :** This equipment has been tested and found to comply with the limits for a class B digital device, pursuant to part 15 of the FCC rules. These limit are designed to provide reasonable protection against harmful interference in a residential installation. This equipment generates, user and can radiate radio frequency Energy and, if not installed and used in accordance with the instructions, may cause harmful interference to radio communications. However, there is no guarantee that interference will not occur in a particular installation, if this equipment does cause harmful interference to radio or television reception, which can be determined by turning the equipment off and on, the user is encouraged to try to correct the interference by one or more of the following measures :

1. Reorient / Relocate the receiving antenna.
2. Increase the separation between the equipment and receiver.
3. Connect the equipment into an outlet on a circuit difference from that to which the receiver is connected.
4. Consult the dealer or an experience radio / TV technician for help.

#### CAUTION

##### RISK OF ELECTRIC SHOCK DO NOT OPEN

CAUTION : TO REDUCE THE RISK OF ELEC TRIC SHOCK, DO NOT REMOVE COVER (OR BACK). NO USER SERVICEABLE PARTS INSIDE. REFER SERVICING TO QUALIFIED SERVICE PERSONAL.

This symbol indicates high voltage is Present inside. It is dangerous to make Any kind of contact with any inside Part of this product.



This symbol alerts you that important Literature concerning operation and maintenance have been included with This product.





## Declaration of Conformity

### Important Safety Instructions

- ① Read these instructions.
- ② Keep these instructions.
- ③ Heed all warnings.
- ④ Follow all instructions.
- ⑤ Do not use this apparatus near water.
- ⑥ Clean only with dry cloth.
- ⑦ Do not block any ventilation opening. Install in accordance with the manufacture's instruction.
- ⑧ Do not install near any heat sources such as radiators, heat registers, stoves or other apparatus (including amplifiers) that produce heat.
- ⑨ Do not defeat the safety purpose of the polarized or grounding type plug A polarized plug has two blades with one wider than the other. A grounding type plug has two blades and a third grounding prong. The wide blade or third prong are provided for your safety. If the provided plug does not fit into your outlet consult an electrician for replacement of the obsolete outlet
- ⑩ Protect the power cord from being walked on or pinched particularly at plug convenience receptacles and the point where they exit from the apparatus.
- ⑪ Only use attachment accessories specified by the manufacturer.
- ⑫ Use only with the cart, stand, tripod, bracket or table specified by the manufacturer, or sold with the apparatus. When a cart is used, use caution when moving the cart/apparatus combination to avoid injury from tip-over.
- ⑬ Unplug this apparatus during lightning storms or when unused for long periods of time.
- ⑭ Refer all servicing to qualified service personal. Servicing is required when the apparatus has been damaged in anyway, such as power-supply cord or plug is damaged, liquid has been spilled or objects have fallen into the apparatus, the apparatus has been exposed to rain or moisture does not operate normally or has been dropped.



**WARNING : To reduce the risk of fire or electric shock, do not expose this apparatus to rain or moisture.**

## Declaration of Conformity



Este dispositivo cumple con la parte 15 de las Normas de la FCC. El funcionamiento está sujeto a las dos condiciones siguientes : (1) Este dispositivo no puede causar interferencias perjudiciales, y (2) Este dispositivo debe aceptar cualquier interferencia que pueda causar un funcionamiento no deseado.

Este receptor satelital proporciona la visualización de subtítulos cerrados de televisión de acuerdo con el artículo 15.119 de las Normas de la FCC.

### PRECAUCIÓN

#### RIESGO DE DESCARGA ELÉCTRICA. NO ABRIR

**PRECAUCIÓN : PARA REDUCIR EL RIESGO DE DESCARGA ELÉCTRICA. NO RETIRE LA CUBIERTA (O LA PARTE POSTERIOR). EN EL INTERIOR DE LA UNIDAD NO HAY PARTES QUE PUEDAN SER MANTENIDAS POR EL USUARIO. CONSULTE AL PERSONAL DE SERVICIO TÉCNICO CALIFICADO.**

Este símbolo indica la presencia de alta tensión en el interior. Es peligroso hacer cualquier tipo de contacto con alguna de las piezas internas de la unidad. Este símbolo indica que se ha incluido bibliografía importante sobre el funcionamiento y el mantenimiento de la unidad.





## Declaration of Conformity

### Información importante sobre seguridad

- ① Lea estas instrucciones.
- ② Guarde estas instrucciones.
- ③ Preste atención a todas las advertencias.
- ④ Siga todas las instrucciones.
- ⑤ No use la unidad cerca del agua.
- ⑥ Límpiela sólo con un paño seco.
- ⑦ No bloquee las aberturas de ventilación. Realice la instalación de acuerdo con las instrucciones del fabricante.
- ⑧ No instale la unidad cerca de ninguna fuente de calor, como radiadores, medidores de calor u otros equipos (incluyendo amplificadores) que puedan generar calor.
- ⑨ No ignore el objetivo de seguridad del enchufe polarizado o de puesta a tierra.  
El enchufe polarizado tiene dos contactores, uno más ancho que el otro.  
El enchufe de puesta a tierra tiene dos conectores y una clavija de puesta a tierra.  
El conector ancho de la clavija se provee para resguardar su seguridad.  
Si el enchufe provisto no encaja en la toma de corriente, consulte a un electricista para reemplazar la toma.
- ⑩ Proteja el cable de suministro eléctrico de manera que no se puedan pisar o aplastar, especialmente junto al enchufe, los receptáculos apropiados y el punto donde el cable sale de la unidad.
- ⑪ Solamente use accesorios o equipamiento especificado por el fabricante.
- ⑫ Use sólo una mesita de ruedas, soporte, trípode, repisa o mesa recomendada por el fabricante o que se venda con la unidad. Tenga cuidado cuando mueva la mesita con ruedas con la unidad para evitar que se vuelque.
- ⑬ Desenchufe la unidad durante tormentas eléctricas o cuando no se use durante largos períodos.
- ⑭ Todas las reparaciones deben efectuarse por un técnico de servicio calificado.  
Es necesario realizar el servicio técnico si la unidad se ha dañado, como por ejemplo si el enchufe o el cable de alimentación están dañados, si se ha derramado líquido sobre la unidad o si ha caído algún objeto dentro de ella, si la unidad ha quedado expuesta a la lluvia o al agua, no funciona de modo normal o se ha caído.



# General Information



## ➤ Safety and Precautions

*Thank you for purchasing the digital satellite receiver.*

*For your safety and proper operation, please take time reading this manual fully before installing and operating the receiver.*

*We hope you will be able to take advantage of the numerous functions with the help of this manual.*

### ◆ **MAINS SUPPLY**

Use only 100 - 250VAC 50/60Hz.

### ◆ **OVERLOADING**

Do not overload a wall outlet, extension cord or adapter as this may result in fire electric shock.

### ◆ **LIQUIDS**

Do not be exposed to dripping or splashing and that no objects filled with liquids, such as vases, shall be placed on the apparatus.

### ◆ **CLEANING**

1. Always disconnect the STB power cord from the outlet before cleaning.
2. Use a light damp cloth (no solvents) to dust off the STB.

### ◆ **VENTILATION**

1. The slots on top of the STB must be left uncovered to allow proper airflow to the unit.
2. Do not stand the STB on soft furnishings or carpets.
3. Do not expose the STB to direct sunlight or do not place it near a heater.
4. Do not stack electronic equipments on top of the STB.
5. Do not use this appliance in airtight area.
6. Do not open the top cover.

### ◆ **CABLE**

Use standard certified cables to prevent any malfunction of the STB.



## General Information

### ➤ Safety and Precautions

#### ◆ ATTACHMENTS

Do not use any attachments that are not recommended as these may cause hazard or damage to the STB.

#### ◆ CONNECTION TO THE SATELLITE DISH LNB

Disconnect the STB from the mains before connecting or disconnecting the cables from the satellite dish.

*Failure to do so can damage the LNB.*

#### ◆ CONNECTION TO THE TV

Disconnect the STB from the mains before connecting or disconnecting the cables from the TV.

*Failure to do so can damage the TV.*

#### ◆ EARTHING

The LNB cable MUST BE EARTHED to the system earth for the satellite dish.

The earthing system must comply with SABS 061.



#### ◆ LOCATION

Place the STB indoor in order not to expose to lightening, rain or sunlight.

#### ◆ SERVICING

1. Do not attempt to service this product yourself.
2. Refer all servicing to qualified service representatives

**NOTICE : The power remains on even when the switch is turned off.**

<b>WARNING</b> RISK ELECTRIC SHOCK DO NOT OPEN	TO REDUCE THE RISK OF ELECTRIC SHOCK, DO NOT REMOVE COVER(OR BACK). NO USER SERVICEABLE PARTS INSIDE. REFER SERVICING TO QUALIFIED SERVICE PERSONNEL.
 This symbol indicates "dangerous voltage" inside the product that presents a risk of electric shock or personal injury.	 This symbol indicates important instructions accompanying the product.



# General Information

## Accessories

Check the following accessories when you open the box



User's Manual



RCU



Serial cable



RCA to RCA cable



DiSEqC SW



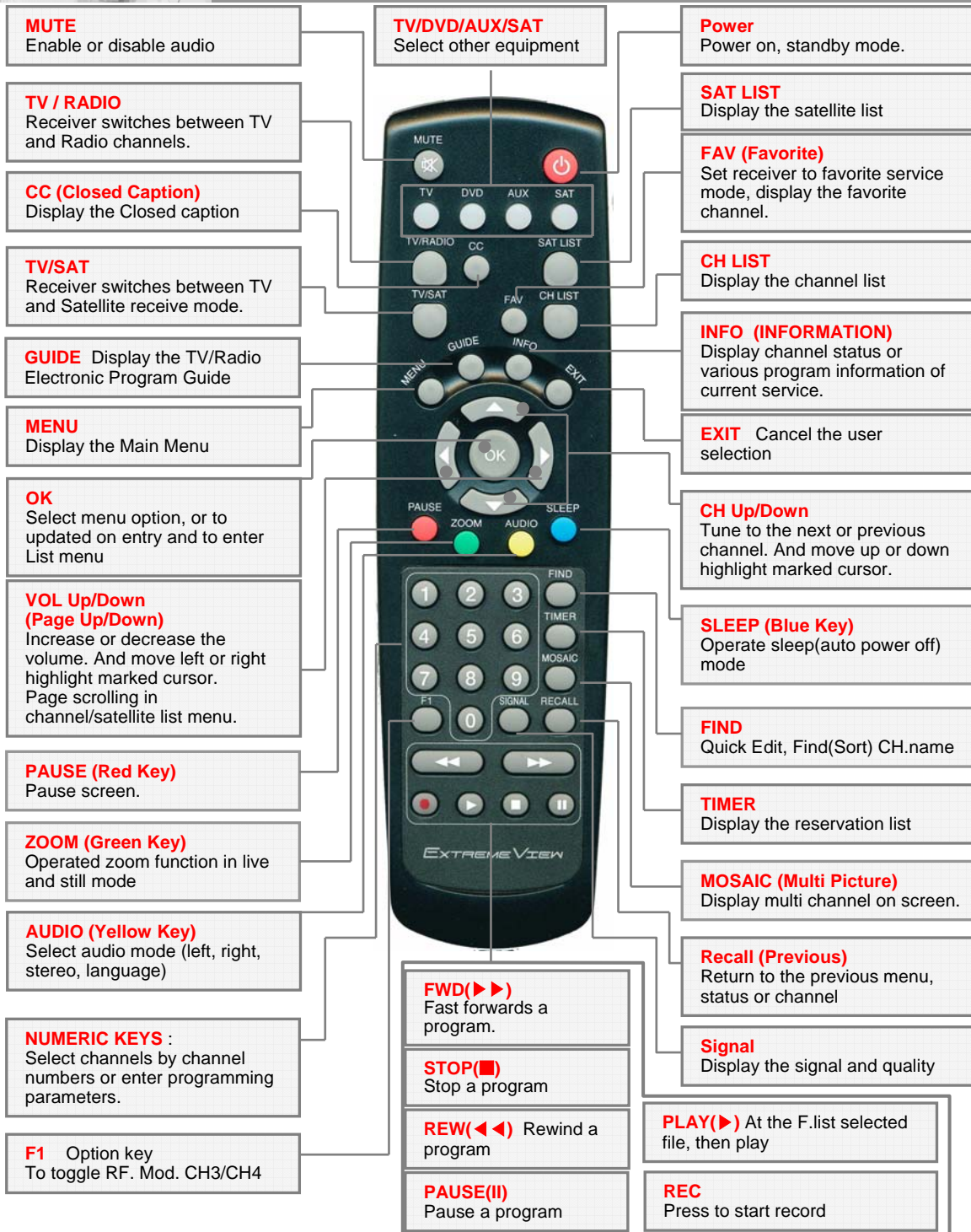
Batteries

**The device, packaging material and batteries must never be disposed of with household.**

**Please obtain appropriate information about regulations in your community, and dispose of all in accordance with regulations at the separate locations provided.**



## Remote Control Unit



# System Connection



## ➤ Front Panel



### ◆ Normal Display :

- On
- STANDBY
- Channel Number
- Channel Name

### ◆ Tact switch : Standby On/Off, CH UP/DOWN, Menu, OK, Vol. UP/DOWN

### ◆ Smart Interface slot : 1 Smart card slot (Xcrypt Embedded)

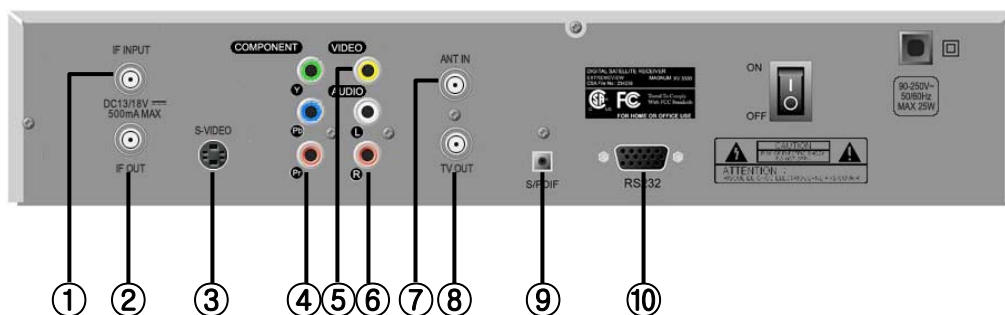
### NOTICE :

1. Current time is based on the TDT(Time and Date Table) at the stream of the current service. If the TDT information is not correct, current time might be incorrect.
2. Please do not insert metal or alien substance into the slot for the modules and Smartcards. In doing so can cause damage to the STB and reduce its life span.



## REAR PANEL

### ➡ Rear Panel



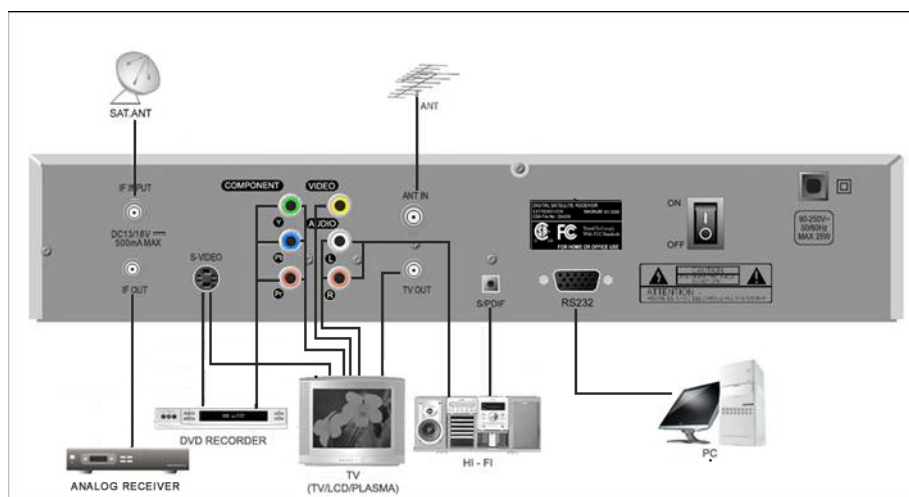
Please refer to the diagram above for all possible connections of your receiver

***Do not connect the unit to the mains socket until all other connections have been made and checked.***

- 1) **IF INPUT** : This port is to connect the coaxial cable from LNB of your Dish.
- 2) **IF OUT** : This enables the connection of an Analogue receiver.
- 3) **S-Video** : This Din connectors is used to connect your TV through S-Video Cable.
- 4) **Component out** : This RCA connector is used to connect your TV through RCA cable. (Y/Pb/Pr component output)
- 5) **VIDEO** : This RCA connector is used to connect your TV through RCA cable.
- 6) **AUDIO R/L** : These RCA connectors are used to connect your TV through RCA cable or any external audio amp or system.
- 7) **ANT IN** : To connect the terrestrial antenna
- 8) **TV OUT** : To connect the RF signal to a RF(ANT) input e.g. VCR, TV.
- 9) **S/PDIF** : This is used to connect with Digital audio amplifier.
- 10) **RS 232C SERIAL PORT** : This is used to connect your receiver with a computer or other STB through a serial cable.

# System Connection

## ➤ Connecting Your System



### ◆ TV Only

There are two ways to connect the STB to your existing TV system. We recommend using one of the following cases for the best result :

- Connect one end of RCA cable (Composite Video, Audio Left, Right) to the RCA jack on the back of the STB and the other end to a RCA jack on your TV.
- Or connect one end of a component RCA jack on the back of the STB and the other end to a Component input of your TV.
- Finally connect the coaxial cable from the LNB to the LNB IN jack on the STB.

### ◆ With External Audio / Hi-Fi System

- To connect any external Audio Hi-Fi system, the receiver has been provided with two RCA connectors at the back of the receiver marked with Audio L and R.
- Connect an RCA stereo cable from the AUDIO L, R jacks on the back of the STB to the LINE, AUX, SPARE OR EXTRA input jacks on your Hi-Fi System or for better quality connect the S/PDIF output to the S/PDIF input of the Hi-Fi system



## System Connection

### ✚ Connecting Your System

#### ◆ *TV with Motorized System (DiSEqC 1.2)*

There are two ways to connect the STB to your existing TV system.  
We recommend using one of the following cases for the best result

- Connect one end of RCA cable to the RCA jack on the back of the STB and the other end to a RCA jack on your TV.
- Or connect one end of Scart cable to the Scart jack on the back of the STB and the other end to a Scart jack on your TV.
- Connect one end of your coaxial cable to the LNB IN connector on the STB and the other end to the REC or Receiver connector on the DiSEqC 1.2 motor.
- Connect the coaxial cable from the LNB to the LNB connector on the DiSEqC 1.2 motor.

#### ◆ *Reference*

##### ***DiSEqC 1.0/1.1/1.2 Connection***

All our receivers are designed to be DiSEqC 1.0 and DiSEqC 1.2 compatible.  
This allows multiple antennas to be connected to the STB at the same time.

If you have two or more fixed antennas or LNBs, then we recommend you use a DiSEqC 1.0 switch.

Connect the coaxial cable from the first LNB to the LNB 1 or LNB A input connector of the DiSEqC switch.

Do the same for any other LNBs that you have.

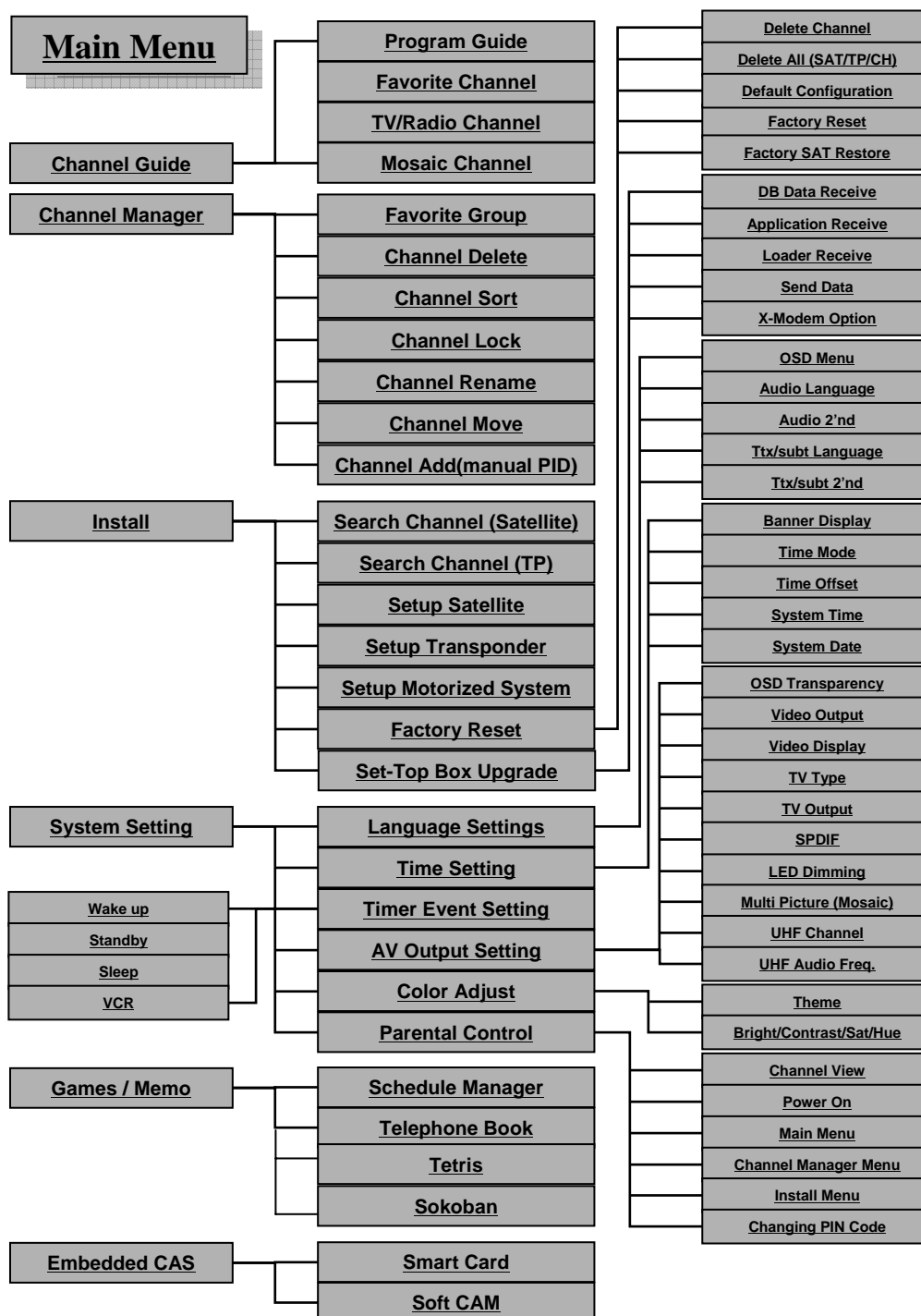
Connect one end of a coaxial cable to the RF output connector of the DiSEqC switch, connect the other end to the LNB IN socket on the STB.

To the digital receiver, you can connect either a single satellite antenna directly or LNB of multi-feed equipment.

##### ***USALS System***

When it comes to USALS System, please refer to Page 23.

# Menu Structure





# Menu Guide

## Installation

### Initial Service Searching

#### Menu Language

Select Language With “◀”, “▶” Key On The RCU, Then Press Ok Or Menu Key To Continue.

#### Factory Satellite Restore

At the booting, select area with “◀”, “▶” key on the RCU. this moment, PIG on the right side of the screen shows the receive-able range.

After selecting the area, move to a certain satellite with “▲”, “▼” button on the RCU, there will be range and signal strength in the PIG.

If the users wants to find satellites easily, press the “Yellow” or “Green” button to sort by name and longitude.

Then, Press OK key on the RCU to edit satellite connection and it will move to setting mode.



#### Selected Satellite Edit

##### 1) Motorized System

Select motor system. (OFF, v1.2 or USALS system) (reference page 17)

##### 2) LNB Type

Depending on the type of LNB cling to your antenna, you can supply either LNB by setting “single”, “universal” or “DishPro”.

##### 3) Local Freq.

Users can input local frequency directly with numeric keys on the RCU. (0....9, one cable1/2 , 5150, 9750, 10600, 10750mhz). to move the cursor, press cursor “◀”, “▶” keys on the RCU.

##### 4) DiSEqC

To the supported the DiSEqC 1.0 /1.1. you can selected the dish to the connection.

\* Finally press OK to save settings.





# Menu Guide

## Installation

### Service Searching

#### Setup Satellite

When Selecting **Setup Satellite** In Install Menu.

##### 1) Degree

Users can edit satellite degree by using numeric keys on the RCU.

##### 2) LNB Frequency (High / Low)

Input the frequency directly from the numeric keys on the RCU or press "OK" on the RCU to scroll frequencies and to select.

##### 3) LNB Power

Select LNB voltage.(13V/18V/Auto)

##### 4) DiSEqC Ver.

DiSEqC must be used when using two or more antennas and LNBs.

Select none, DiSEqC 1.0 or DiSEqC 1.1.

##### 5) DiSEqC

- Committed

Set The Port Number Of **DiSEqC 1.0** Switch ( P-1 To P-4)

- Uncommitted

Set The Port Number Of **DiSEqC 1.1** Switch. (P-1 To P-16)

##### 6) 22khz

In case you are using a dual LNB or two antennas connected to a 22khz tone switch box, make 22khz tone switch enable or disable to select LNB or antenna.



#### Setup Motorized System

When Selecting **Setup Motorized System** In Install Menu.

##### 1) Motorized System 1.2(motor) : You can

move the motor to the left or right by pressing the "◀", "▶" keys selection. at v1.2 , USALS, off mode.

##### 2) Store : When you press the "red" key.

##### 3) Degree : Press OK key on the RCU first, then, press numeric number keys on the RCU to edit degree directly.



# Menu Guide

## Installation

### Service Searching

#### Setup Motorized System

- 4) **Move** : Select TP and use the cursor with RCU keys to "Move" menu to move the motor. Refer to the signal strength (as visual graphic chart), at this time.

The motor will move by step by pressing left/right cursor keys shortly on the RCU. The motor will move continuously if users press cursor keys steadily on the RCU. The movement of a motor will be shown on the upper screen.



#### Setup Transponder

When Selecting **Setup Transponder** In Install Menu.

- 1) **Edit TP** : Press OK key on the TP to edit.
- 2) **Sort** : Press "Yellow" button to sort TP by TP name or Frequency
- 3) **Delete** : Press "Green" key on the selected TP to delete the TP.
- 4) **TP data change** :

- When the cursor is on the channel name, press OK button to change the channel name.

#### TP Edit

- Place the cursor on the sub menu by using the ▲▼ keys and press the ◀ ▶ keys or "NUMERIC" key to change the setting.
- Insert the frequency of the transponder you want to edit.
- Input the symbol rate of the transponder you want to edit.
- Select the polarization of the transponder you want to edit ( **Horizontal / Vertical** ) .
- Select the FEC (Forward Error Correction) of the transponder you want to edit.
  - If you cannot find the desired transponder from the transponder list, you can add it by inputting appropriate parameter values for a new transponder and press the "Red" key to add new transponder.



# Menu Guide

## Installation

### Setup Transponder

**5) CH Search** : To search TP on the setup transponder mode, select TP first and then press "Blue" key to search channels.

### Search Channel (Satellite)

When selecting **Search Channel (Satellite)** in Install menu.

- 1) Service searching** : TV/RADIO, CAS, NETWORK SEARCH or by SID method can be selected when OK key is pressed in satellite. To search multiple channels between satellites, press "Red" key to select satellites. Press up/down key to move cursor on the option then press OK button to begin searching.



### Search Channel (Satellite)

- 2) SAT-Setup** : If satellite setup was wrong, users can run setup edit by pressing press yellow key. Please refer page 12 for editing.
- 3) Blind Search** : To blind scan, refer below information and start searching.
  - Frequency step : Can be setup for 2/ 4/6/8/10/12MHz .
  - Symbol Rate : Select All, >8MHz or <8MHz
  - Polarization : Select All, Ver(13V), Hor(18V)
  - TP/Channel : Select All TV, RADIO or TP only
  - CAS : Select All (FTA+CAS) or FTA only.
- 4) SCAN** : Users can go to scan mode when "OK" key is pressed on the selected SATELLITE. Then select few options to start scan by;
  - TV / Radio channels
  - CAS or FTA channels
  - Network search
  - SID search



Press "Start" on the menu or press OK from RCU to start search.



## Menu Guide

### Installation

#### Search Channel (Satellite)

STB will automatically search all TV/Radio channels from a satellite and save them into the Channel List.

You can see the progressive status of channel searching. Press the **Red** or **Exit** key to stop Channel Search.

When the Channel Search is completed, the result will be saved and the first channel of the searched ones will be displayed.

---

**Notice : Please wait for the receiver to process all the channels, and note that the "Channel Search" procedure may take a few minutes.**

---

### Service Searching

#### Search Channel (Transponder)

When selecting **Search Channel (Transponder)** in Install menu.

- 1) **TP searching** : To TP setup editing, press "Yellow" key on the RCU in search channel (Transponder) menu when TP list is displayed.
- 2) **SATTP Setup** : To edit the parameters of the TP, press the "Yellow" key on the RCU.
  - Frequency
  - Symbol rate
  - Polarization
  - FEC



# Menu Guide

## Installation

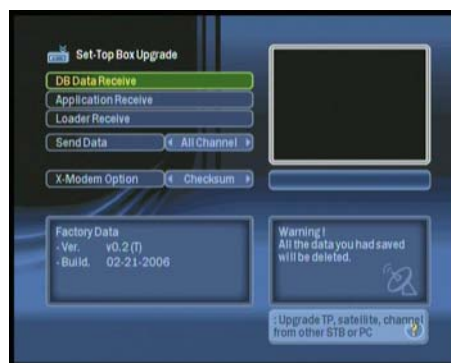
### ◆ Factory Default

- 1) **Delete Channel** : Delete channel data only.
- 2) **Delete All (SAT/TP/Channel)** :  
Delete a certain part of data in the setting.
- 3) **Default Configuration**  
To reset all environment variables to default.
- 4) **Factory Reset**  
Reset to factory default.
- 5) **Factory Satellite Restore**  
Restore New Satellite information by area from the DB of the flash memory.



### ◆ Set-Top Box Upgrade

- 1) **DB Data Receive** : To receive certain DB from another XV 3300 or from PC.
- 2) **Application Receive** :  
Only to receive application S/W from another XV 3300 or from PC.
- 3) **Loader Receive** :  
Only to receive Loader S/W from another XV 3300 or from PC.
- 4) **Send Data** :  
To send;  
- All channel  
- Application S/W  
- Loader  
From;  
Current XV 3300 to another XV 3300 or to a PC to store.





## Menu Guide

### ➤ Channel Guide

#### ◆ Program Guide

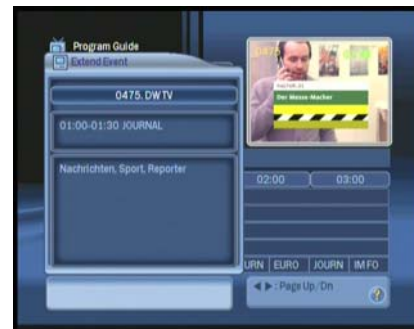
##### Guide

The information is only available from the transponder of the channel you are watching.  
To see the titles of current & next program, press the "Guide" of the RCU. Depending on the amount of the Guide (EPG) data, loading time might take a couple of seconds.



##### Ext. Event

When selected channel information is displayed  
To see the extended information of program, press "Green" key. The extended information may include : detailed information such as the actors, the providers .. etc.





# Menu Guide

## ➤ Channel Guide

### ◆ Program Guide

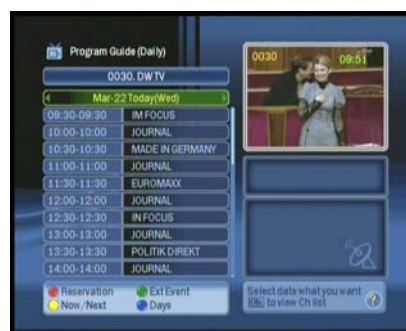
#### Reservation Functions

1. Maximum 20 events can be reserved.
2. To reserved the channels you want,
  - 1) Select the reservation broadcast using “▲”, “▼” keys.
  - 2) Time event : Select the type “Record/View.”
  - 3) Mode : Select the mode “Once / Daily / Weekly”.
  - 4) Time : Set the Start time using numeric keys.
  - 5) Duration : Set the duration time using numeric keys
3. To cancel the reserved channels, select “Exit”.
4. The recording time will end about 10 seconds earlier than the reserved time. This is to prepare for the next program to be recorded.
5. Use above 2. to adjust the time to prevent overlapping of the record time.



#### Daily

To display the Daily Guide of the selected channel.





# Menu Guide

## ➤ Channel Guide

### ◆ Favorite Channel

This function can be used to edit channel in favorite group of main menu.

#### 1. Favorite group move

Select channel to move by using “◀”, “▶” key.

To move a certain channel to a group, move to the group then press “OK” key to add the channel in it

#### 2. Edit

Press Red key to pop up display and control it to change channel on the favorite group or delete the channel in a group.



### ◆ TV/Radio Channel

Easy to find a certain channel in channel list.

Press “FIND” key continuously to sort by ALL, Alphabet, TP, CAS or Normal Channel number



### ◆ Multi Picture (Mosaic Channel )

Display shows 5 previous channels from the viewing channel and 7 channels forward from viewing channel.

The current viewing channel is displayed on the center of the screen





# Menu Guide

## ➤ Channel Manager

### ◆ Favorite Group

Favorite group is selected in Channel manager menu. There are theme category for grouping on the right side of the screen

#### 1. Favorite group register

Move to a channel with “▲”, “▼” key and select the channel with the Red key.

To register a selected channel to a favorite group, press the “Green” key.

After press Green key, another window will be displayed, select a group and press “OK” to finish.

Use back key to go back to the previous menu, favorite group number will be displayed.



#### 2. Favorite Channel Edit, Delete

To delete a channel in a favorite group, Fav. Add key (Green) to display another window and press Green key to delete the channel from favorite group.

##### Rename

Press the Blue key to have another pop up window to change the Favorite Group name by using the “▲”, “▼”, “◀”, “▶”.





## Menu Guide

### ➤ Channel Manager

#### ◆ Channel Delete

Move the cursor highlight to a channel to delete and press the “Red” key to select and press Green key to confirm to delete the channel.

#### ◆ Channel Sort

Sort function can be in SID, channel name, Sat/TP and in CAS order.

#### ◆ Channel Lock

To lock a channel, move cursor highlight to the channel and press the “Red” key to lock it and “Yellow” to save.

#### ◆ Channel Rename

Move the cursor highlight to the channel to rename and press the “Red” key to display the Key Board and use “▲”, “▼”, “◀”, “▶” key to change the channel name.

When finished select OK and press the “Yellow” key to save.



# Menu Guide

## ➤ Channel Manager

### ◆ Channel Move

Go to a certain channel with cursor key and press the “Red” key to select.

Then press “Green” (move) key to display move pop up window.

Setup location and direction and select “Channel Move...” to confirm.



### ◆ Channel Add (Manual PID)

When the PID (broadcast data) of a certain channel is changed, PID value can be adjusted in “Channel Add” menu.

1. Select a satellite where the channel PID is to be changed.
2. Select the transponder of the channel.
3. Highlight the channel with the cursor.
4. On the channel, press “OK” key.
5. Input value with the numeric key.
6. To add a new channel select “Add” and input the value, to modify an existing channel PID value select “Update”.

These selection can be done by hot key.

(“Red” and “Green” Key)

The new added channel name can be modified by pressing “OK” on the current channel name.



To display in either hex value or decimal value press the “Yellow” key.

To check and view the modified channel press “VIEW” to display PIG screen on the right side of the screen.



# Menu Guide

## ➤ System Setting

### ◆ Language Setting

To select the desired language of the OSD Menu , Audio, 2'nd Audio place the cursor on the sub menu by pressing the “▲,▼” keys and press the “◀,▶” keys to change language.

The Language of the OSD Menu , Audio, and 2'nd will be changed to the selected language.



### ◆ Time Setting

#### 1. Banner Display

Control information display time on live channel screen.

(time : 0 ~ 10 Sec)

#### 2. Time Display

Displays in 24HR mode or in AM/PM mode.

#### 3. Time Mode

To set time automatically from TDT information

#### 4. Time Offset

Date is displayed by GMT time standard.

(Changeable only in “Auto Time” mode.)

#### 5. System Time / Date

When Time Mode is in “Auto” the time and date information is set automatically from the TDT data.



### ◆ Timer Event Setting

#### 1. Wakeup

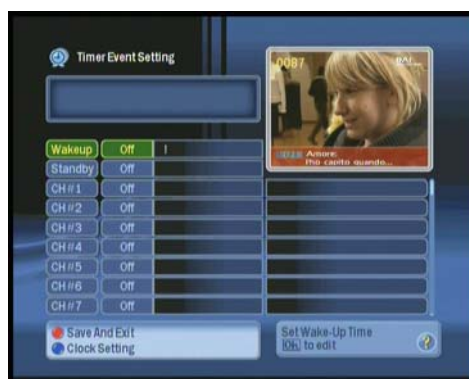
Wakeup time can be selected.

#### 2. Standby

After certain amount of time, STB can be automatically turned off.

#### 3. Timer

User can setup reservation for a Start / End time of a specific up to Max. 7 channels.



Press “RED” key to save the settings.

# Menu Guide

## System Setting

### ◆ AV Output Setting

#### 1. OSD Transparency

OSD Transparency can be adjusted from level 0 to 10 by one step.

#### 2. Video Output

Video output can be selected from S-Video to YPbPr

#### 3. Video Display

1) When Aspect Ratio 4:3

- PAN SCAN : Center part of 16:9 image shown on full screen when 16:9 transmission
- LETTERBOX : Whole 16:9 image is shown on screen with horizontal black bars on top and bottom.

#### 4. TV type

1) When Aspect Ratio 16:9

- 4:3 Transmission : 4:3 image with vertical black bars on the sides.
- 16:9 Transmission : Image on full screen.

2) When Aspect Ratio Auto

- 4:3 TV : Center part of 16:9 image shown on full screen when 16:9 transmission.
- 16:9 TV : 4:3 image with vertical black bars on the sides when 4:3 transmission.

16:9 image on full screen when 16:9 transmission.

#### 4. TV Type

Select the format of the video to be displayed on screen. You can choose either 4:3 ratio (Standard) or 16:9 (Wide) according to the TV type.

#### 5. TV Output

TV output can be selected as PAL/NTSC/SECAM

#### 6. SPDIF (Sony Philips Digital InterFace)

Digital audio output can be selected On/OFF

#### 7. RF Channel

Select RF modulator output channel. Channel 3 or Channel 4. When setting is finished, make sure to press "Red" key to save.



### ◆ Color Adjust

Except default adjustment, users can adjust below ration for changing.

(Default/Sports/Movie/Cartoon/User)

User defined adjustment can be changed as range.

- Bright -32 ~ +31
- Contrast -32 ~ +31
- Saturation -32 ~ +31
- Hue -32 ~ +31





## Menu Guide

### ➤ System Setting

#### ◆ Parental Control

You can change your PIN Code from the factory default value “0000” as follows:

##### 1. Channel Lock Mode

Off, Continuous, Once.

##### 2. Power On

To lock the receiver, select “Power On” in the “Parental Control” menu and change it to the “On” mode by using the “◀, ▶” keys. If the receiver is locked, whenever you try to start the STB, the “PIN Code” screen will appear and you will be asked to enter your PIN Code.



##### 3. Main Menu

To lock the receiver, select “Main Menu” in the “Parental Control” menu and change it to the “On” mode by using the “◀, ▶” keys.

If the receiver main menu is locked, whenever you try to Menu key the RCU, the “PIN Code” screen will appear and you will be asked to enter your PIN Code.

##### 5. CH. Manager Menu

To lock the Channel Manager, select “Channel Manager Menu” in the “Parental Control” menu and change it to the “On” mode by using the “◀, ▶” keys..

##### 6. Install Menu

To lock the Install, select “Install Menu” in the “Parental Control” menu and change it to the “On” mode by using the “◀, ▶” keys.

##### 7. Changing PIN Code

You can change your PIN Code from the factory default value “0000” as follows:

Select “Change PIN Code” in the “Parental Control” menu.

You will then be asked for a new PIN Code when the changing PIN Code pressed.

Once you enter a new PIN Code, the system will ask you to re-enter for confirmation. When you have entered a new PIN Code twice, the PIN Code has been changed. If you forget the PIN Code, contact the distributor to recover it.



# Menu Guide



## ➤ System Setting

### ◆ Additional Options

#### 1. Multi Picture (Mosaic)

To display Multi Picture (Mosaic). (For direct access press "MOSAIC" from the RCU)  
Numbers of Multi Picture (Mosaic) can be changed from 4/9/10/13 by pressing "MOSAIC" key from the RCU twice.



#### 2. Front Lock

To lock the receiver, select "Front Key" in the "Parental Control" menu and change it to the "On" mode by using the "◀, ▶" keys.

If the receiver key is locked, whenever you try to Front Button the STB, the "PIN Code" screen will appear and you will be asked to enter your PIN Code.

#### 3. LED Dimming

Front Display of the box's bright can be adjusted from step 1 to step 5

#### 4. Front Display Mode

Selecting CH. Name or CH. No. the front 7 segment will display be either Channel or Channel number.

#### 5. SID Mode

SID Mode On or Off.

#### 6. SID Sort

Sort channel by SID.

#### 7. Caption

On to enable closed caption.



## Menu Guide

### Games / Memo

#### ◆ Schedule Manager

Schedule calendar is displayed when Schedule manage is pressed.

Users can move to dates by “▲”, “▼”, “◀”, “▶” cursor and press OK key to select.

At this time pop up window will be displayed.

##### 1. Alarm

Set alarm for a certain time.

##### 2. ICON

Upon users' request, below icon set is possible.  
(Memo / Birthday / Wedding / Travel / Meeting / Appointment / Vacation)

##### 3. Memo

After ICON setup, move cursor to down to Memo and press “OK” to pop up a window.

At this time use “▲”, “▼”, “◀”, “▶” cursor to enter text.

Press “RED” Key to store.



#### ◆ Telephone book

Users can manage telephone numbers

##### 1. Select a group. Each group made up 5 groups

Each group can memorize max. 24

##### 2. Press “OK” to display vacancy space.

##### 3. Press “OK” again to memorize name/mobile no./telephone no./memo

##### 4. Press “RED” key to store.

##### 5. To store multiple data, do above step again..







## Menu Guide

### ➤ Games

#### ◆ Tetris

- “OK” : Rotate
- “◀” : Move Left
- “▶” : Move Right
- “▼” : Drop



#### ◆ Sokoban

##### Objectives

Move the balls to designated positions but  
The balls can only be pushed.

- “◀” : Move Left
- “▶” : Move Right
- “▲” : Move up
- “▼” : Move Down



# Menu Guide



## ➤ Embedded CAS

### ◆ Smart Card

XV 3300 is an embedded Xcrypt receiver, please insert a valid Xcrypt smart Card to view Xcrypt channels.

For proper operation always insert the smart card IC face down.





## Functions Guide

### ➤ List Menu

This menu helps you to easily select the channel that you want to watch or edit.

To display the Channel List, press the **"List"** or **"OK"** key while you are viewing a program and you will see all channels that you saved in the channel list.

To watch a specific channel, first select by using the **"▲,▼"** keys, and press the **"OK"** key to confirm. (For page up/down, press left/right key on the RCU)

You can also select a specific channel by pressing the numeric keys directly.

The symbol of **"Lock"** & **"Scrambled"** feature displayed on the Right side of the list stands for locked channel or scrambled channels.

1. When you press the **◀▶** keys, you can see and control the Channel List by page up/down.
2. When you press the **"TV/Radio"** key, you can automatically select TV and Radio Channel List.
3. When you press the **"FAV"** key, you can see each favorite channel list from A to E.



*The channel list can be constructed independently for each Satellite, Favorite Group, TV or Radio, by pressing the **"TV/ RADIO, SAT LIST, CH LIST"** and **"FAV"** keys.*

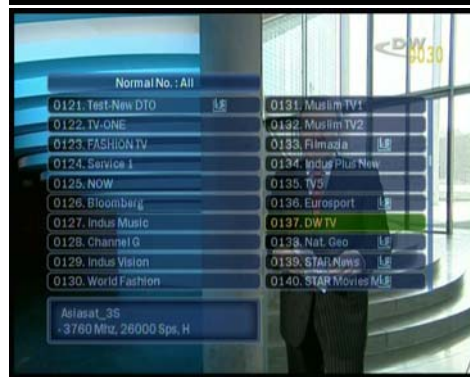
*At these menus press **"FIND"** key repeatedly of the RCU to easily find channels in Alphabetical, TP, CAS or Normal channel number order.*



# Functions Guide

## List Menu

Use “**FIND**” key of the RCU after “**TV/RADIO**”, “**SAT LIST**”, “**CH LIST**” or “**FAV**” to easily find a specific channel.



- When you press the “**Sat list**” key, Channels will be sorted by satellites.





## Functions Guide

### ➤ Closed Caption

#### Displaying Closed Caption (CC)

Some programs are broadcast with Closed Caption. To display Closed Caption, select Closed Caption function On by pressing CC button. Closed Caption shows you a caption, that is printed version of the dialog or sound effects of a program.

Note : Your TV should support Closed Caption function to display Caption.

### ➤ Info bar (i-Plate)

Press once to display i-plate for signal level (Green) and quality (Red).

Also the channel name / TDT/ PID information & program type (FTA/ CI ...) is displayed.

Press "option" key to change i-plate position to bottom or center of the screen



: Scramble channel display



: Sound AC3 display



: Teletext information



: Subtitle information



: Lock channel display



: Favorite Channel



### ➤ SIGNAL

To display the current Strength and quality of the signal including the current Satellite information.





# Functions Guide

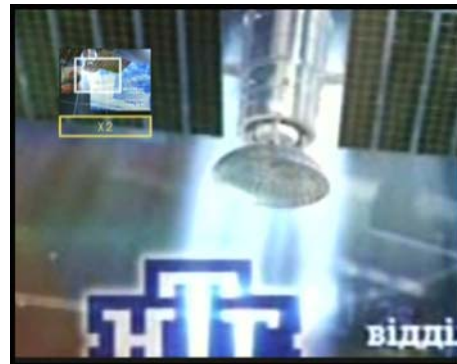


## ➔ ZOOM

Press zoom key on the RCU to close up the screen as x1/ x2/ x3/ x4 rates.

On the zoomed screen it can move by “▲”, “▼” “◀”, “▶” key.

To quit zoom, press exit key.



## ➔ Quick Edit

When the user wants to register or change the current favorite group while viewing or to lock or delete a channel press the “FIND” in the no menu state of the RCU for quick edit.



## ➔ Audio Language

Users can select audio language press the “AUDIO” key of the RCU.





## Specification

### ➤ Technical Specification

#### Conditional Access Interface

Smart	1 Slot Smart card interface
-------	-----------------------------

#### Front End

Input Frequency	950~2150MHz
Input Impedance	75Ω
Connector	2xF-Type
RF Input Level	-65~-25dBm
LNB Control	DiSEqC 1.0 , 1.1 & 1.2, USALS
LNB Power	13V/18V (Max500mA with short circuit protection)
LNB Tone Switch	22KHz
Wave Form	QPSK (SCPC, MCPC capable)
Symbol Rate	2~45 MS/S

#### A/V Mode

Video	MPEG-II Main Profile/Main Level
Audio	MPEG-I Layer I&II
Aspect Ratio	4:3, 16:9
Audio Sampling Rate	32, 44.1, 48KHz
Audio Type	Mono, Dual Mono, Stereo, Joint Stereo
Graphic Display	720x576(PAL), 720x480(NTSC)

# Specification



## Technical Specification

### Connectors

Tuner	IEC 169-24,Female With 1 Loop Through Out
Video Output	1 x RCA/Cinch
Audio Output	2 x RCA/Cinch
Component Video Output	3 x RCA/Cinch
S-Video Output	1 x Mini DIN
S/PDIF	1 x optic con. (Dolby Bitstream Out Available)
Modulator Output	NTSC Modulator (CH3 / CH4)
RS232C	9 Pin D-Sub RS232C serial port

### General Characteristics

Power Type Supply Voltage	SMPS 100-250VAC, 50/60Hz
Power Consumption	Max. 25W
Display	4 Digit, 7-Segment
Weight	Approx. 1.65Kg
Dimensions	300(W) x 220 (D) x 60 (H) mm
Channel Storage	Max. 6000CH(4000 for Video, 2000 for Audio)
Operating Temperature Storage Temperature	0 ~ 45°C -10°C ~ 70°C

**Please Note : The specification of the STB may be changed without notice in advance.**





# Specification

## ➤ Technical Specification

---

### CPU

Main CPU	STm5105 / 200 MHz
----------	-------------------

### Memory

Flash Memory	4 MB
System Memory	32 MB

---

# Trouble Shooting Guide



## ➤ Trouble Shooting

If you suspect there is a fault with your receiver, please check the following trouble shooting guide before calling an authorized service agent.

---

**Warning! Under no circumstances attempt to repair the receiver yourself. Tampering with the receiver may result in fatal electric shock and will invalidate your warranty.**

---

Symptom	Possible cause
No display on the Display Panel	<ul style="list-style-type: none"><li>• The power cord is not plugged in correctly.</li></ul>
No picture on the screen	<ul style="list-style-type: none"><li>• Receiver is in Standby mode.</li><li>• RCA Jack is not connected firmly to the video output port of television.</li><li>• Incorrect channel or video output is selected on television.</li><li>• Brightness level of your TV set is incorrectly defined.</li></ul>
No sound	<ul style="list-style-type: none"><li>• The RCA cables are connected incorrectly.</li><li>• The Volume level is low.</li><li>• Muting function is active.</li></ul>



## ***Trouble Shooting Guide***

### ➤ **Trouble Shooting**

<b>Symptom</b>	<b>Possible cause</b>
Poor Picture Quality	<ul style="list-style-type: none"><li>• The level of Signal strength is low.</li></ul>
Receiver not responding to remote control unit	<ul style="list-style-type: none"><li>• RCU batteries are dead or inserted incorrectly.</li><li>• The RCU is pointing toward wrong direction.</li></ul>
Receiver is on but no picture or sound except the following messages (No signal, Locked channel, Not available)	<ul style="list-style-type: none"><li>• Channel is not available.</li><li>• Channel is locked.</li><li>• Service installation not yet done.</li></ul>
No Signal	<ul style="list-style-type: none"><li>• The level of Signal strength is low.</li><li>• LNB is out of order.</li><li>• The cable from the LNB is incorrectly connected.</li><li>• The position of the dish is aligned incorrectly.</li></ul>
Settings you made in the menu have now changed	<ul style="list-style-type: none"><li>• The receiver lost power before being able to enter into standby mode.</li><li>• Some of the Settings saved by user can be deleted partly or fully.</li></ul>

**For more info, visit [www.ExtremeViewInc.com](http://www.ExtremeViewInc.com)**

# Universal RCU



## ➤ Universal Remote control Function List

### J-R803W MODEL FUNCTION LIST

No.	STB	TV	DVD	AUX	REMARK
1	STB				Device key
2		TV			Device key
3			DVD		Device key
4				AUX	Device key
5	POWER	POWER	POWER	POWER	
6	MUTE	MUTE	MUTE	MUTE	
7	GUIDE	GUIDE			
8	TV/RADIO		OP/CL/HDD	FM/AM	
9	SAT LIST				
10	MENU	MENU	MENU	MODE	
11	FAV				
12	EXIT	EXIT	EXIT	EXIT/CLEANER	
13	RECALL				
14	CH. LIST	LAST/PREV CH		6.7CH/MULTI CH	
15	INFO	INFO	INFO	DISPLAY	
16	MOSAIC				
17	UP	CH+	UP	UP	
18	LEFT	VOL-	LEFT	LEFT	
19	OK	OK	OK	OK	
20	RIGHT	VOL+	RIGHT	RIGHT	
21	DOWN	CH-	DOWN	DOWN	
22	PAUSE			VOL-	
23	ZOOM		ZOOM/VCR	VOL+	
24	AUDIO			PRESET-	
25	SLEEP			PRESET+	
26	1	1	1	TUNER	
27	2	2	2	CD	
28	3	3	3	DVD	
29	4	4	4	VCR1	
30	5	5	5	TV	
31	6	6	6	CABLE	
32	7	7	7	SAT	
33	8	8	8	AUX	
34	9	9	9	TAPE1	
35	0	0	0	PHONO	
36	FIND		SETUP		
37	SIGNAL	ENTER	ENTER	DSP+/MODE+	
38	CC				
39	TV/STB	TV/VCR-INPUT	INPUT		
40	F1	+10	+10	DSP-/MODE-	
41	TIMER				
42	◀◀		◀◀	◀◀	
43	▶▶		▶▶	▶▶	
44	RECORD ●		RECORD ●	RECORD ●	
45	▶		▶	▶	
46	STOP ■		STOP ■	STOP ■	
47	PAUSE		PAUSE	PAUSE	



## *Universal RCU*

### ➤ **Operating Other Equipment with Universal Remote Control Unit**

#### ◆ Operating other equipment (TV , DVD, Tivo, Audio...).

You can operate TV, DVD, AUDIO equipment that has an infrared remote sensor with the supplied remote controller. To operate it, set the manufacturer's code number.

#### **Setting the manufacturer's code**

##### 1. 3-digit code input Mode

Determine what type of equipment (TV, DVD, Tivo, Audio).

Press Device key button and OK button simultaneously for 2 seconds.

→ LED will be lighted on the Device key button.

Press 3-digit code number.

To confirm the correct code is input, press Power button. If the code is correct, your device will be turned on. If your device is not turned on you can try other code until your device is turned on by pressing 3- digit code number again. After confirm your code, press OK button to complete the input.

##### 2. Auto Search Mode

Determine what type of equipment (TV, DVD, Tivo, Audio).

Press Device key button and OK button simultaneously for 2 seconds.

→ LED will be lighted on the Device key button.

Press ▲ key or ▼ key until your device is turned on. press OK button to complete the input.

#### **Factory Reset the manufacturer's code**

To return to the factory default code, press TV key and REC key for 5 seconds.

# Universal RCU



## ➔ Universal Remote Control Unit Code

BRAND LIST (TV Sets)			
ABEX	025	MAXENT	242
ADMIRAL	072 081 077 160	MEGATRON	116 163
ADVENT	247	MEMOREX	007 072 004
ADVENTURA	002	METZ	088
AKAI	116 146 248	MGA	116 004 024 028 042
AMARK	112 143	MIDLAND	077 073
AMPRO	167 073	MINERVA	088
AMSTRAD	062	MINUTZ	008
ANAM	043 054 066 080 112 131	mitsubishi	109 124 024 004 028 040 042 146 191
ADC	116 004 112 068	MONTGOMERY WARD	077 072
APEX DIGITAL	006	MTC	116 004 101
AUDIOVOX	076	NAD	015 025
BARCO	233	NEC	237 031 036 132 130 134 116 040 016 024 056 019 236
BELCOR	116	NET TV	242
BELL&HOWELL	077 072	NIKEI	043
BLAUPUNKT	088	NIKKO	116
BROKSONIC	238	NUVISION	084
BROCKWOOD	116	ONKING	043
CANDLE	116 002 003 004	ONWA	043
CAPEHART	068	OPTIMUS	025
CELEBRITY	070	OPTONICA	019 081
CENTURION	116	OPTOMA	032 036
CETRONIC	043	ORION	086
CITIZEN	116 002 003 004 043 101 103 143	PANASONIC	034 056 080 164 208
CLASSIC	043	PHILCO	116 003 059 060 164 004 024 066
CLP CLASSIC	077	PHILIPS	164 005 093 038 116 003 004 059 127 184 206 239 027
COLORTYME	116	PILOT	116
CONCIERGE	073	PIONEER	135 025 018 023 116 237
CONCERTO	004	POLAROID	015 069 066
CONTEC	043 060 051	PORTLAND	004 143
CORNEA	116	PROSCAN	144 160 077 167
CORONADO	143	PROTON	004 131 058 143 171 173 193
CRAIG	043 054	PULSAR	116 073
CROWN	043 143	QUASAR	034 056
CURTIS MATHES	116 101 004 143	RADIO SHACK	019 004 143 043 127
CXC	043	RCA	160 077 065 144 116 004 024 056 152 023 074 077
DAEWOO	004 016 043 044 076 103 114 125 127 143	REALISTIC	007 019 043 047
DAYTRON	004 143	ROCTEC	166
DELL	055 063 064	RUNCO	168 169 178 179 180 181 182 073
DIMENSIA	077	SAMPO	242 116 058 004
DREAMVISION	235	SAMSUNG	021 050 089 101 105 004 127 143 160 228 229
DUKANE	163 025	SAMSUX	116
DUMONT	116 073	SANSUI	096
DURABRAND	096	SANYO	166 007 020 053 057 082 187
DWIN	177 017	SCEPTRE	039
DYNASTY	043	SCOTCH	116
EIKI	187	SCOTT	028 043 004 048 143
ELECTROBAND	070	SEARS	015 030 004 007 028 057 143 094 160 082 166
ELECTROHOME	143 024 076 196	SELECO	200 205 227
ELEKTRA	072	SHARP	081 019 014 170 028 029 004 022 143 175 251



# Universal RCU

## ➔ Universal Remote Control Unit Code

BRAND LIST (TV Sets)			
EMERSON	028 043 043 155 005 116 004 047 050 051 076 096 143 153 154	SHOGUN	116
ENVISION	116	SIEMENS	088
ESA	066	SIGNATURE	072
FISHER	007 057	SIM2	200 206 227
FUJITSU	198 246	SIMPSON	003
FUNAI	028 043 052	SOLE	231 232
FUTURETECH	043	SONY	070 139 147 126 185 041
GATEWAY	242 033	SOUNDESIGN	028 004 003 043
GE	160 077 144 073 116 008 009 034 056 074 130 155 004	SPECTRICON	112
GIBRALTAR	116 073	SSS	004 043
GOLDSTAR	113 116 102 004 106 112 119 127 143	SUPRA	116
HALL MARK	004	SUPREMACY	002
HITACHI	011 163 166 004 009 010 012 023 075 143 158 072	SUPREME	070
HP	049 068 099	SVA	069
INFINITY	164	SYLVANIA	116 003 052 059 060 164 044 160 127
INFOCUS	230 071 077	SYNTAX OLEVIA	098 077 144 160
INTEQ	073	TANDY	081
INSIGNIA	079	TATUNG	056
JANIL	002	TECHNICS	034 080
JBL	164	TECHWOOD	004
JCB	070	TEKNIKA	002 003 004 024 028 043 072 101 143
JCPENNEY	004 024 116 008 009 030 065 101 143 160	TELEFUNKEN	037 046
JENSEN	013	TELERENT	072
JVC	038 034 070 083 145 199 210 240 241	TERA	172
KAWASHO	116 070	TMK	004
KEC	043	TOSHIBA	015 138 030 007 040 101 067 237
KENWOOD	116 070	TOTEVISION	143
KLOSS	002 059	UNIVERSAL	008 009
KLOSS NOVABEAM	002	VICTOR	146
KMC	143	VIDEO CONCEPTS	146
KTV	043 116 143 154	VIDIKRON	174 184 188 192
KURAZAI	072	VIDTECH	004
LG	113 116 102 004 106 112 119 127 143 243 097	VIEWSONIC	242
LOGENET	072	VIKING	002
LOEWE	164	WARDS	004 008 009 019 028 060 061 072 074 143 164 034
LOGIK	072	WESTINGHOUSE	076 046
LUXMAN	004	YAMAHA	116 004
LX	166 007 015 052 081 160 164	YORK	004
MAGNAVOX	164 059 116 003 060 061 004 127 022 160 094 239 226	YUPITERU	043
MAJESTIC	077 072	ZENITH	073 072 095 103 243
MARANTZ	116 164 184	ZONDA	112
MATSUI	164		

# Universal RCU



## ➤ Universal Remote Control Unit Code

BRAND LIST (DVD Set)			
AIWA	146	NAKAMICHI	103
ALPINE	098	ONKYO	076 035 180
APEX DIGITAL	087 111 115	ORION	130
BROKSONIC	130	PANASONIC	021 138 139 144 150
CINEVISION	091	PHILIPS	066 095 105
DENON	007 080 173	PHILIPS-MAGNOVOX	035 066
DURABRAND	091	PIONEER	131
DVD 2000	017	POLAROID	233
EMERSON	091 143	POLK AUDIO	035 066
FISHER	147	PROCEED	086
FUNAI	143	PROSCAN	026 027
GE	026 027	RCA	026 027
GOLD STAR	091	SAMSUNG	030 070 119 165 170 137 162
GO VIDEO	137 091 220 221 222	SANSUI	154
HARMAN KARDON	084 140	SANYO	147
HITACHI	101	SEARS	147
INTEGRA	142 180	Sensory Science	222
JBL	084	SHARP	094
JVC	012	SONY	033 118 145 126 191
KENWOOD	151	SYLVANIA	143
KLH	135	SYMPHONIC	143
KRELL	104	TATUNG	102
LEXICON	148	TECHNICS	138
LG	091 057 074	TECHWOOD	088
MAGNAVOX	066 096	THOMPSON	026 027
MARANTZ	105 095	TIVO	234 235 236
MERIDIAN	153	TOSHIBA	035 034 130 141 164 188
MICROSOFT	027	VENTURER	149
MITSUBISHI	017	YAMAHA	138 089 066 195 197
MYRYAD	102 134	ZENITH	057 074 091
NAD	088		
DVD Recorders		TV/DVD/VCR Combos	
Manufacturer/Brand	Set-Up Code Number	MAGNAVOX	143
GO VIDEO	220 221 222	PANASONIC	144
PANASONIC	139	SYLVANIA	143
SENSORY SCIENCE	222	TOSHIBA	164
SONY	191	DVD/VCR Combos	
TOSHIBA	188	GO VIDEO	137
TV/DVD Combos		PANASONIC	150
AIWA	146	PHILIPS	105 (VCR Functions for VCR 067)
FUNAI	143	SAMSUNG	137 159
SAMSUNG	165	SANSUI	154
SYLVANIA	143	SONY	145
SYMPHONIC	143	TOSHIBA	141
TOSHIBA	130	ZENITH	091 (VCR Functions for VCR101)





# Universal RCU

## ➤ Universal Remote Control Unit Code

BRAND LIST (AUX Set)			
ADCOM	082 092 225 161 023 148 149	MITSUBISHI	242 243 204
AIWA	170 018 104 202 203 213 211 188	MONDIAL	157 158 042 043 081 112
AKAI	189	MYRYAD	030 099
ANTHEM	127 128	NAD	186 113 038 216 210
ARCAM	141 255	NAKAMICHI	111 244 245 172 183 054
ATLANTIC TECH	134	NIRO	135
AUDIO FILE	071	NILES	241
B & K	096 097	ONKYO	029 017 046 108 080 209
BOSE	070 170 224 147 227 199	OPTIMUS	026 041
BOSTON ACOUSTICS	246	OUTLAW	134
CARVER	006 028 061 071 201 214 226 185 022 077 050	PANASONIC	032 195 219 177 098 221
CLARION	026	PARASOUND	129 130 132 003 103 105 125 126
DELPHI	251	PHILIPS	249 250 063
DENON	109 215 230 234 002 121 133	PIONEER	014 039 044 069 168 116 035 078
ELAN	057 090	POLKAUDIO	251
ESCIENT	229	PROCEED	144 021
FISHER	047 214 182	RCA	010 048 117 156 067 055
FLEXTRONICS	207	REALISTIC	019 073 075
FOSGATE AUDIONICS	231 134	ROTEL	074 083 085
GOLDSTAR	008	RUSSOUND	223 239
HARMAN KARDON	231 233 153 154 118 119	SAMSUNG	016
HITACHI	020	SANSUI	040 048 110 065 228 063
INTEGRA	029	SANYO	047 059
JVC	163 191 114 034 091	SCOTT	019
KENWOOD	026 066 145 192 182 005 037 196 252	SHARP	026 094 131 175
KLH	123	SHERWOOD	024 102 106 246
KRELL	150 072 197 222	SONY	018 247 248 166 101 184 218 025 179 180 220
LEXICON	120 235 236 237 159 160	SOUNDESIGN	036
LINN	124 206	SUNFIRE	142 143 146
LUXMAN	137 139 052 165 115 004 009	TEAC	005 019 049 111 212 217
MAGNAVOX	086 164 152 208	TECHNICS	122 193 219 178 177 200 254 007
MARANTZ	006 028 031 040 063 185 186 015 056	THETA DIGITAL	136
MCINTOSH	238 053	TOSHIBA	060 087 033
MERIDIAN	100 012 013	YAMAHA	026 253 169 067 173 205 011 232 089 027 051 181
MEDIA PC Controls		XM Radios	
DELL	194 190	DELPHI	251
GATEWAY	194 190	KENWOOD	252
HP	194 190	POLKAUDIO	251
SONY	194 190	SONY	220
TOSHIBA	194 190		
WINBOOK	194 190		

