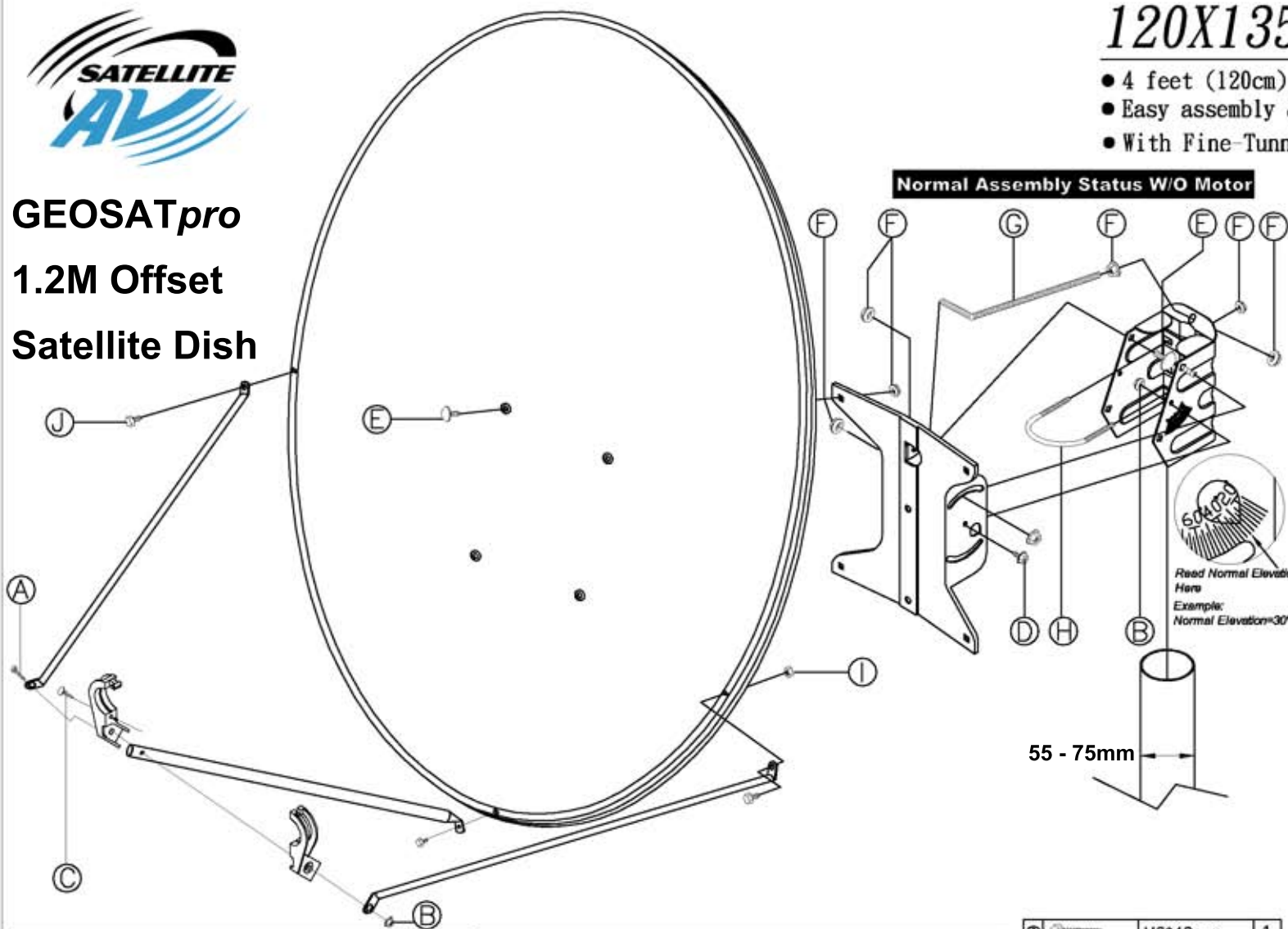




GEOSATpro **1.2M Offset** **Satellite Dish**

120X135CM DISH

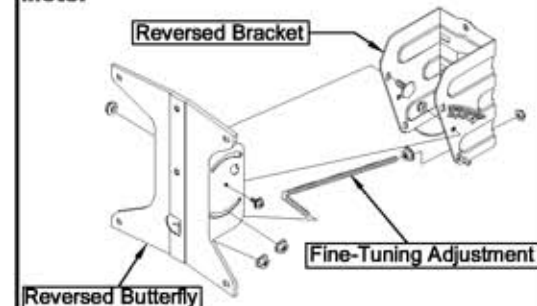
- 4 feet (120cm) offset antenna with rolled lips edges.
- Easy assembly & strong Az/EI mount.
- With Fine-Tuning Design for accurate Angle SETUP.



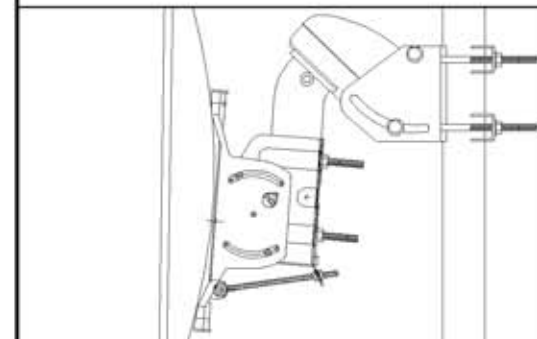
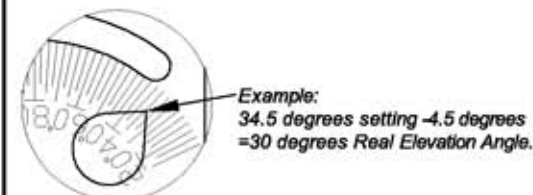
Normal Assembly Status W/O Motor

Assembly for Use with Top Loading HH DiSEqc Motor

Reverse the Bracket & Butterfly to assemble with Top Loading HH DiSEqc Motor

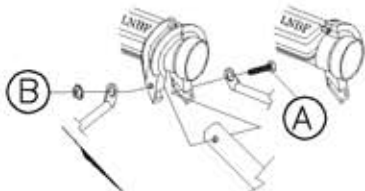


Corrected Angle Setting for Reversed Bracket
 To set for correct elevation angle, subtract 4.50 degrees from the displayed elevation angle. Example: If displayed angle is 34.50 degrees, the dish is actually aimed at 30 degrees.

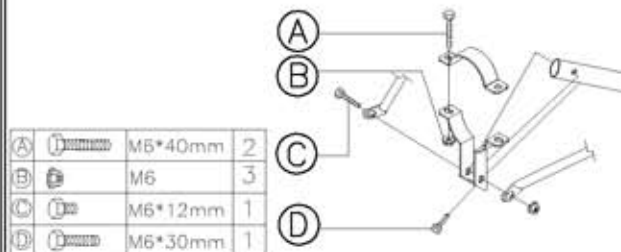


LNBF Clamp

- Ø23.5mm Ø40mm Option enclosed.



C-Band LNBF clamp



A	M5*40mm	2
B	M6	3
C	M6*12mm	1
D	M6*30mm	1

A	M6*40mm	1
B	M6 HEX NUT	3
C	M5*25mm	1
D	M6*12mm	2
E	M8*15mm	8
F	M8 HEX NUT	15
G	M8*190mm	1
H	M8*80mm	2
I	M6 HEX NUT	3
J	M6*12mm	3

55 - 75mm

Read Normal Elevation Here
 Example: Normal Elevation=30°