

DIGIWAV 

User's Guide

***DG7000***



# Contents

<b>GENERAL INFORMATION</b>	<b>P1</b>
Main Feature	P1
For your Safety	P2
Unpacking	P3
General Operation	P3
RCU	P4
Front Panel	P5
Rear Panel	P5
<b>INSTALLATION</b>	<b>P6</b>
Connecting to Antenna & TV	P6
Connecting to TV using RCA support	P6
Connecting to TV using RF support	P7
Connecting to TV using S-VIDEO	P7
<b>MENU INFORMATION</b>	<b>P8</b>
<b>USER INSTALLATON</b>	<b>P9</b>
Antenna setup - 1) DiSEqC 1.2	P10
Antenna setup - 2) Fixed	P10
Channel search - 1) DiSEqC 1.2	P10
Channel search - 2) Fixed	P14
System Setting	P14
Parental Lock	P15
Factory Default	P16
<b>GENERAL VIEWING FUNCTION</b>	<b>P17</b>
Select Channel	P17
Pause the Frame	P17
Previous Channel Recall	P17
TV&Radio mode	P17
Channel Information	P18
Volume&Audio Control	P18
Favorite List	P19
<b>CHANNEL MANAGER</b>	<b>P20</b>
Channel Manager	P20
Favorite Channel	P20
Move Channel	P21
Lock Channel	P22
Rename Channel	P22
Delete Channel	P23
Sort Channel	P23
<b>EPG (Electronic Program Guide)</b>	<b>P24</b>
<b>TIMER</b>	<b>P25</b>
<b>ANTENNA DIRECTION HELP</b>	<b>P26</b>
<b>FRONT PANEL DISPLAY</b>	<b>P27</b>
<b>TROUBLE SHOOTING</b>	<b>P28</b>

# GENERAL INFORMATION

A Digital Satellite Receiver is a convenient product that allows you to view a variety of programs provided through satellite. This user's guide covers the installation of the DSR and the necessary steps to implement various features. This also explains special features available only in this DSR in detail, which will allow you to make full of these feature.

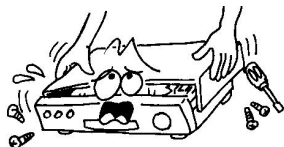
Information confirmed in this document is subject to change. We reserves the right, without notice, to make change in product design or performances as progress in engineering manufactory or technology may warrant.

## Main Feature

- High quality Video & Audio & Digital Audio
- Fully MPEG-2, DVB compliant
- Provide friendly and easy-to-use menu system
- Various channel editing function (Favorite, moving, locking, renaming, deleting and sorting)
- User programmable various Satellite & Transponder information
- Automatically search for newly added transponder
- Stores up to 4000 channels
- Easy and speedy software upgrade through RS-232 port
- Plug-and-play data transfer system (DSR to DSR)
- Timer function, automatically turns On/Off by setting function (daily, monthly, yearly)
- Automatic reserved channel moving system
- Provide Electronic Program Guide (EPG)
- Teletext function support
- Provide various switch types, LNB types and NTSC/PAL monitor type
- SCPC/MCPC Receivable from C/Ku Band Satellite
- DiSEqC 1.2 positioner for multiple satellites, multi LNB controlled by DiSEqC 1.2
- 256 colors On-Screen-Display
- PAL/NTSC automatically conversion
- Last channel automatically saving

# GENERAL INFORMATION

## For Your Safety



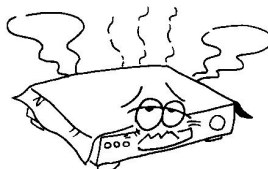
- To avoid electric-shock hazards, do not open the cabinet, refer servicing to qualified personnel only.



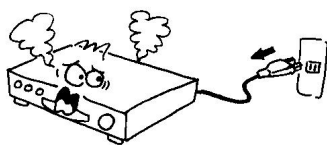
- Keep the receiver away from flower vases, tubs, sinks, etc., in order to avoid damaging the equipment.



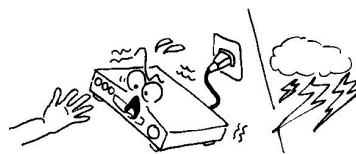
- Do not expose the receiver under the sunlight. And keep it away from the heat source.



- Do not block ventilation holes of the Receiver so that air can circulate freely.



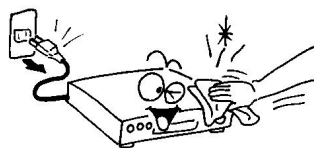
- When the abnormal phenomenon occur, you should cut off the power immediately.



- Do not touch the receiver during thunder, since that might create electric-shock hazards.



- Switch the receiver off whenever it remains out of service for an extended period.



- Be sure to turn the Receiver off and disconnect the AC power cord before cleaning the Receiver surface. If the surface is dirty, wipe clean with a cloth which has been dipped in a weak soap-and-water solution and wrung out thoroughly, and then wipe again with a dry cloth.



# GENERAL INFORMATION

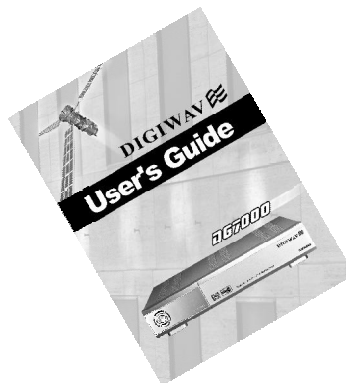
## Unpacking



● Remote Control



● Batteries



● User's Guide



● Audio / Video Cable

## General Operation

- Throughout this manual you will notice that the everyday operation of the receiver is based on a series of user friendly on screen display and menus. These menus will help you get the most from your receiver, guiding you through installation, channel organizing, viewing and many other functions.
- All function can be carried out using the buttons on the RCU, and some of the function can also be carried out using the buttons on the front panel.
- The receiver is easy to use, always at your command and adaptable for future advances.
- Please be aware that new software may change the functionality of the receiver.
- Should you experience and difficulties with the operation of your receiver, please consult the relevant section of this manual, including the Problem Shooting, or alternatively call your dealer or a customer service adviser.

# GENERAL INFORMATION

## RCU



Key	Function
	Turns power ON/OFF of the DSR
	When watching a channel, mute the sound
0-9	Enter number of the required menu item or select a channel number to watch
TV/RADIO	Switches between TV and Radio mode
← PR	Switches back to previous channel
FAV	Display the favorite channel list
SAT	Select programs by satellite
AUDIO	Multiple language
INFO	Shows information of the current channel
MENU	Press this key one time to run menu onscreen, and call command box
↑ ↓	Moves up / down a page in the channel list
OK, LIST	Executes the selected item in the menu screen or enters the desired value in any input mode
PR+, PR-	When watching a channel, change channels or move to the next higher or lower item in the menu
◀ ▶	When watching a channel, adjust the volume or move to the left or right item in the menu
EXIT	Returns to the previous menu on the menu screen or escape from the menu
EPG	Calls up the EPG (Electronic Program Guide)
	Selects the different audio modes
TV/AV	Switches between TV and AV modes (No function in this model)
	Switches to teletext or subtitle mode
UHF	Switches to UHF turning mode (No function in this model)
PAUSE	Press once to pause the screen picture, press once again to go to the normal mode
PAL/NTSC	Switches between PAL and NTSC modes
POSITION	Motor setup

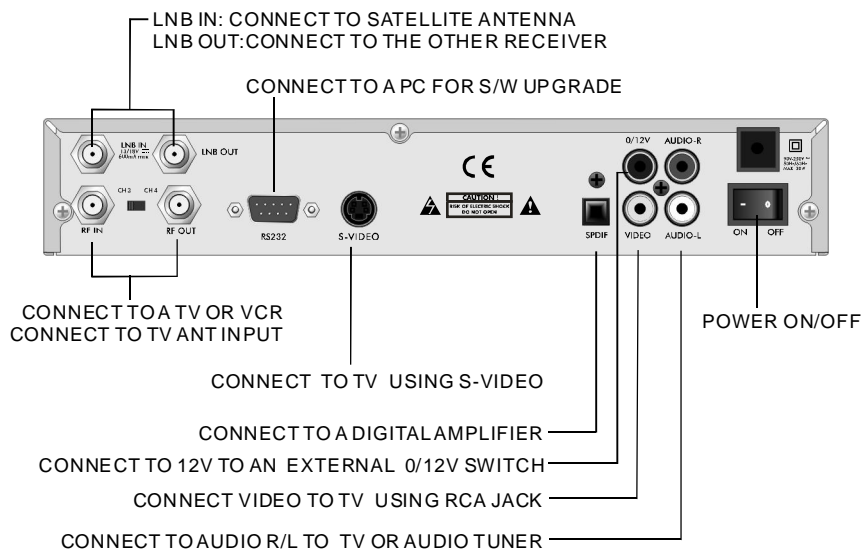
# GENERAL INFORMATION

## Front Panel



Key	Function
	Turns on and off the power of the receiver.
▲ (PR+)	In live mode, changing to the next channel.
▼ (PR-)	In live mode, changing to the previous channel.
► (VOL+)	In live mode, a channel, increase the volume.
◄ (VOL-)	In live mode, a channel, decrease the volume.

## Rear Panel

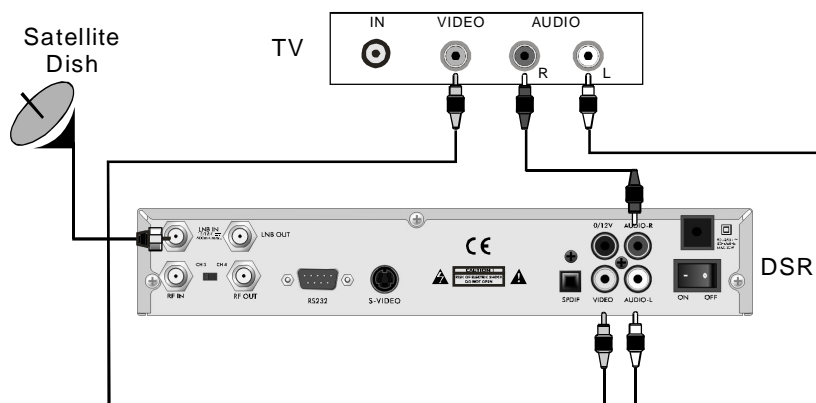


# INSTALLATION

## Connecting to ANTENNA & TV

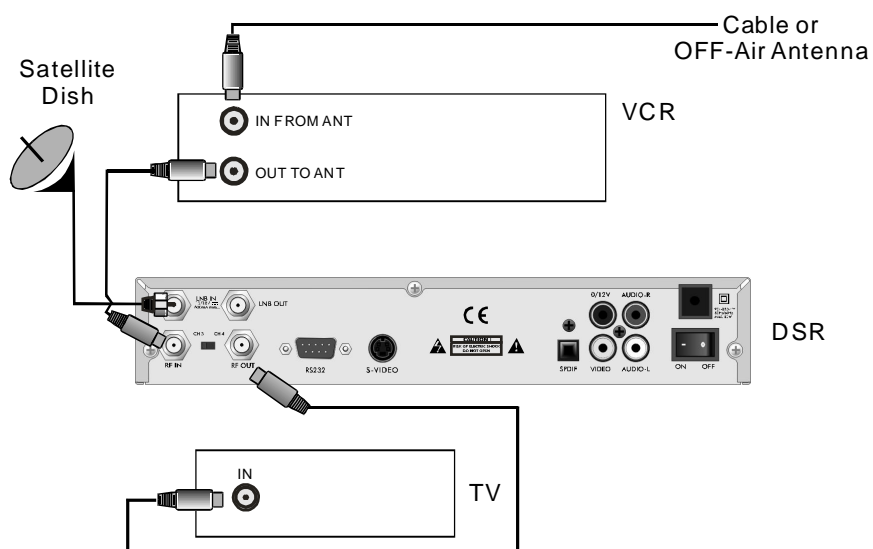


## Connecting to TV using RCA support

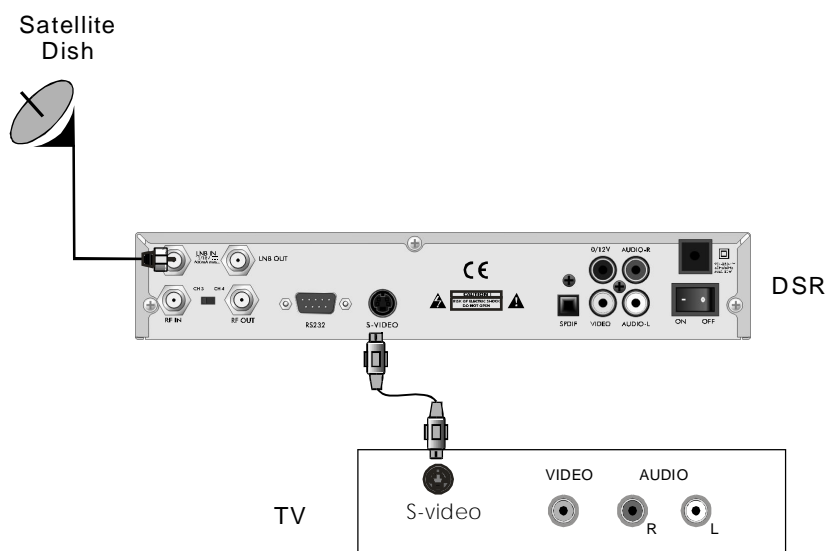


# INSTALLATION

## Connecting to TV using RF support



## Connecting to TV using S-video

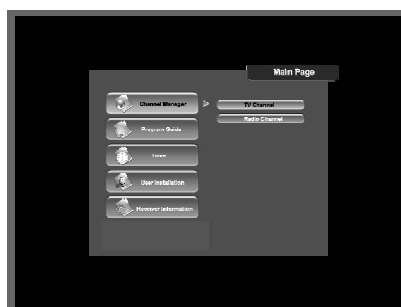


# MENU INFORMATION

● Once you properly installed and connected cables of the receiver, the menu will be displayed.

● This menu consists of 5 major main menus as follow.

- Channel Manager
- Program Guide
- Timer
- User Installation
- Receiver Information



● During the installation the **OK** key confirms a selection and **LIST** key shows Down List Box if the column has mark. You can also use the numeric keys on the RCU to enter numeric value.

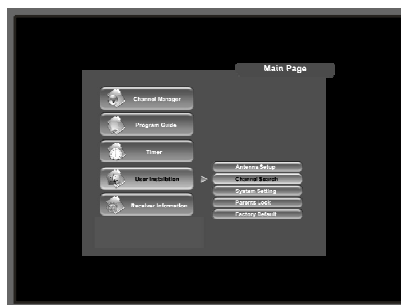
Use the **PR+**, **PR-** key to move upwards and downwards from one line to another line and use **←**, **→** key to move from main menu to sub menu and move from left side to right side or versa.

Meantime, you want to escape the menu system, please press **EXIT** key on the RCU.

# USER INSTALLATION

- This menu consists of 5 major sub-menus as below.

- Antenna Setup
- Channel Search
- System Setting
- Parental Lock
- Factory Default



## Antenna Setup-1) DiSEqC 1.2

- 1) **Antenna** : You can select maximum 16 antennas with the combination switches.
- 2) **Type** : Select your antenna type to be DiSEqC1.2.
- 3) **Satellite** : Select first satellite you want.
- 4) **LNB Type** : Select your LNB type. If you have universal LNB, select Univ.
- 5) **LNB Freq.** : Enter the proper LNB frequency referring to your LNB using numeric key on the RCU or use **KEY PAD** displayed by pressing OK key.



If you have a dual LNB, enter the proper value in the both of value box.

- 6) **Switches (0/12 Volt, 22KHz Tone, DiSEqC)** : You can select the switches with which you want to configure the antenna.
- 7) **C/Ku band control** : You can select C/Ku band control by selection of switch type.

- **East, West Limit :**

If you select **Limit Setup** button, **Limit Setup** menu will pop up. Press **E** key on the RCU continuously reaches to the easternmost point and then press **OK** key on the RCU. The message of 'Would you like to set East limit of DiSEqC motor?' will be displayed for your confirmation. Please cursor on the **OK** button on the screen and press **OK** key on the RCU to confirm the East limit.



To set West limit, take the same steps as East limit.



# USER INSTALLATION

## Antenna Setup-1) DiSEqC 1.2

### ● Reset DiSEqC limit :

If you want to reset the East limit or West limit, place a cursor on Reset DiSEqC Limit button and then press **OK** key on the RCU. The message of **Would you like to reset limit for DiSEqC positioner?** will be displayed for your confirmation. Select **OK** button by pressing **OK** key on the RCU.

- The cursor will move to the East limit button so that you can reset the limit. After that, please reset West limit same as before.



- After setting all necessities, please **EXIT** to finish antenna setup menu. The message of Are you sure to change the configuration of Antenna setup? will be displayed. Please select **OK** button on the screen and then wait for saving a data.

## Antenna Setup-2) Fixed

- **1)Antenna** : You can select maximum 16 antenna with the combination switches.

**2) Type** : Select your antenna type to be Fixed.

**3) Satellite** : Select satellite you want.

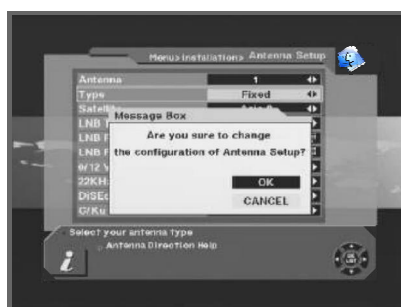
**4) LNB Type** : Select your LNB type. If you have universal LNB, select **Univ.**

**5) LNB Freq.** : Enter the proper LNB frequency referring to your LNB using numeric key on the RCU.

If you have a dual LNB, enter the proper value in the both of value box.

**6) Switches (0/12 Volt, 22KHz Tone, DiSEqC)** : You can select the switches with which you want to configure the antenna.

**7) C/Ku band control** : You can select C/Ku band control by selection of switch type.



- After setting all necessities, please **EXIT** to finish antenna setup menu. The message of Are you sure to change the configuration of Antenna setup? will be displayed. Please select **OK** button on the screen and then wait for saving a data.

# USER INSTALLATION

## Channel Search-1)DiSEqC 1.2

1) **Antenna** : Select your antenna number.

2) **Satellite** : Select desired a satellite using  $\leftarrow$   $\rightarrow$  keys or if you press **OK** key the list of satellite will be displayed so that you can select easily.

You can see the information of selected satellite in the right side.



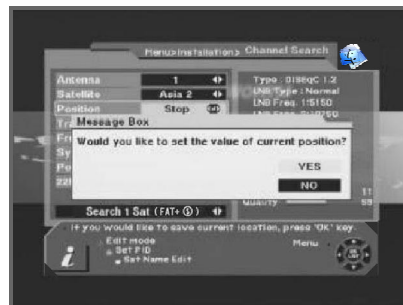
**Edit Mode** : If you want to edit those preprogrammed data such as Transponder, Frequency, Symbol Rate, Polarization and 22 KHz, please press **Edit mode** key (Red color key) on the RCU. And then you can move into those columns to change the value.

3) **Position** : After selecting a satellite, please select Position button and then keep pressing **E** or **W** key on the RCU until selected satellite is locked. If the satellite is locked correctly, the color of signal label bar will be changed to yellow.



When you press **OK** key on the RCU, the message of Would you like to set the value of current positioner? will be displayed for your confirmation.

4) **Transponder** : Select desired a transponder using  $\leftarrow$   $\rightarrow$  keys or if you press **OK** key the Down List Box will be displayed so that you can select easily.



5) **Frequency & Symbol Rate** : Edit Frequency and Symbol Rate you want.

6) **Polarization** : Select Hor or Ver.

7) **22KHz** : Select ON or OFF.

# USER INSTALLATION

## Channel Search-1)DiSEqC 1.2

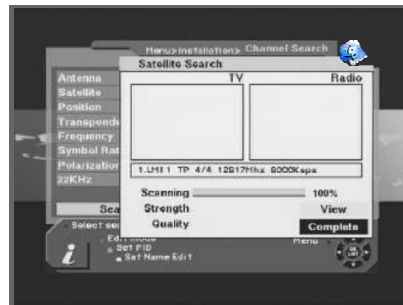
**8) Search 1 Sat** : Allows you to search channels with convenient options as follows, select one using arrow keys.



-**Search 1 SAT** : Search channels for one satellite which selected on Satellite column.

-**Search TP** : Search channels in one TP which selected on TP column.

-**Search Network** : Search channels for the network related the TP.

-**Search all SAT** : Search all channels at once which you searched all satellite.



**Notes:** In "**Search 1 SAT**" and "**Search TP**" function, you can switch "FTA+" for free to air and scramb channels model, "FTA" for free to air channels model, "" for scramb channels model by RCU.

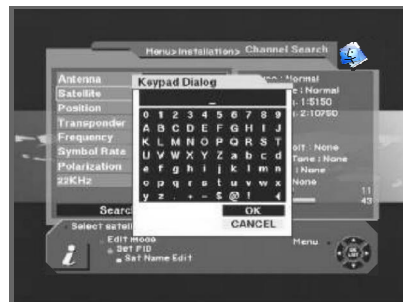
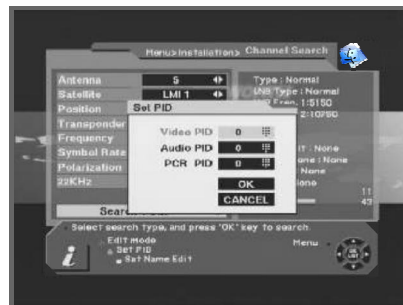
The receiver will automatically search the channel for TV and Radio and during this procedure you can see the already searched channels in the Searched List Box on the screen.

If completed searching channel, cursor will be placed on **COMPLETE** automatically, then press **OK** button.

**9) Set PID** : If you want to set **PID** (Packet Identifier) manually, select **TP** in the **Channel Search Page** and press **MENU** key on the RCU to display command box.

And select **SET PID** command and press **OK**, then set **PID** menu will be displayed. Enter the correct value and select **OK**.

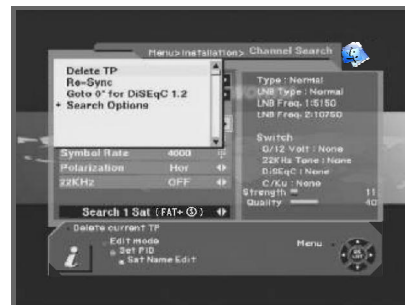
**10) Sat name edit** : If you want to change satellite name, select the satellite and press **Sat Name Edit** key (Yellow color key) on the RCU to display command box. Select **Sat name edit** then Keypad Dialog box will appear. Using arrow key on the RCU, you can edit the satellite name.



# USER INSTALLATION

## Channel Search-1)DiSEqC 1.2

**11) Delete TP** : If you want to delete a transponder, please select the Transponder what you want to delete and then press **MENU** key on the RCU to display command box. Then select **Delete TP** command and the confirm message box will be displayed.

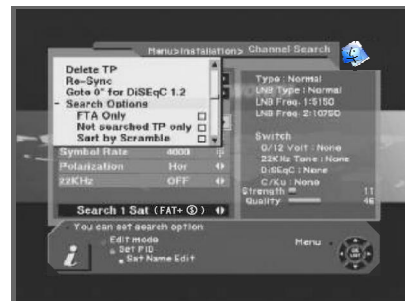


**12) Re-Sync** : When all location of searched satellites are shifted by unknown reason, you can realign all of them once if you adjust one satellite location.

**13) Go to 0 for DiSEqC 1.2** : When you install the motor of DiSEqC 1.2 antenna at first, you can select this function to move the center of antenna to be 0 .

**14) Search Option** : The receiver allows you to search channels with convenient options as below.

- FTA Only
- Not searched TP only
- Sort by Scramble



If you select Sort by Scramble, the receiver sort the scrambled channels automatically.

If you select Not searched TP only, the receiver search channels in the TP which is not searched or new TP.

# USER INSTALLATION

## Channel Search-2) Fixed

- 1) **Antenna** : Select your antenna number.

- 2) **Satellite** : Select desired a satellite using keys or if you press **OK** key, the list of satellite will be displayed so that you can select easily.

You can see the information of selected satellite in the right side.



- 3) **Edit Mode** : If you want to edit those preprogrammed data such as Transponder, Frequency, Symbol Rate, Polarization and 22 KHz, please press **EDIT mode** key (Red color key) on the RCU to display the command box. And then you can move to those columns to change the value.



- 4) ~ 14) Please refer to DiSEqC 1.2 type antenna.

## System Setting

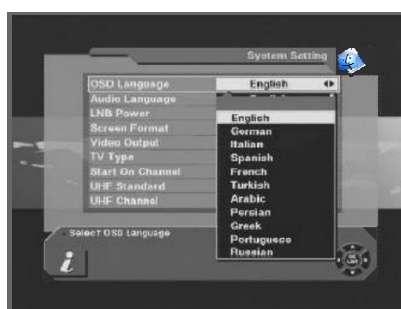
- **System Setting** menu allows you to change the principal option and to set other items proper to your environment by pressing **OK** key on the RCU.

- 1) **OSD Language** : Select your desired language.

- 2) **Audio Language** : Select your desired audio language to be in the top priority under the condition that this language is supported from the channel.

- 3) **Set local time** : Adjust your local time.

- 4) **Summer time** : If you are in summer time, select **ON**.



- 5) **LNB power** : If your receiver is connected to LNB, select **YES**. But if your receiver is connected to other receiver through Loop Through support, you should check which receiver is connected directly to LNB. In case if that other receiver is directly connected to LNB, select **OFF**.

# USER INSTALLATION

## System Setting

**6) Screen Format :** If your TV supports 16:9 screen format and selected channel provides **16:9** format program, select **16:9**.

**7) Video output :** If your SCART supports RGB control, select **RGB**. Otherwise select **CVBS**.

**8) TV type :** Select the type according to your TV type.

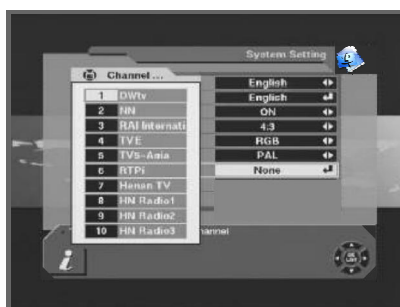
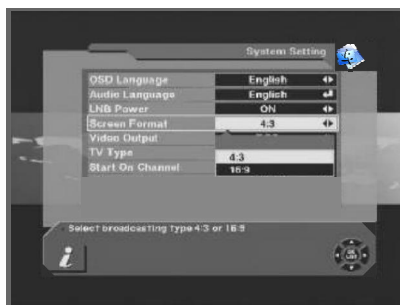
**9) Display Info Bar :** You can adjust the displaying time interval of info bar from 2 sec to 12 sec. Default value is 6 sec.

**10) Start On Channel :** If you press **OK** key, then the channel list is displayed. You can select one channel of the list, the selected channel starts whenever you turn on the receiver.

**11) UHF Standard :** Select UHF type.

**12) UHF Channel :** Select your desired UHF channel for satellite mode.

● **Note :** The receiver for the country, in which it is not used UHF, 11) and 12) option will be deleted.



## Parental Lock

● This function allows you to lock the channel with your password in order to prevent from accessing the channel by your children or any other person.

And also you can protect your installed data and information using Install Lock.

● How to change Password :

- 1) Enter the current password.
- 2) Select **ON** of Parental Lock.
- 3) Enter new password.
- 4) Confirm your new password entering new password again.

**Note :** Default password is 0000.


**Warning :** Once you change password, please do not forget and keep well.



# USER INSTALLATION

## Parental Lock

### ● How to use Parent Lock :

- 1) If you activate parent lock function, go to the TV channel Manager Page.
- 2) Press **Lock** key (Blue color key) on the RCU.
- 3) Select channel the which you want to Lock.
- 4) Press **OK** then  symbol is marked.



### ● How to use Install Lock :

- 1) Enter the current password.
- 2) Select **ON** of Install Lock.
- 3) Enter new password.
- 4) Confirm your new password entering new password again.
- 5) Exit this menu.
- 6) Select any menu and press **OK** on the RCU.
- 7) Then Enter Password Box will be displayed.
- 8) Unless enter correct password, you can not run any menu.



**Note** : Default password is 0000.

**Warning** : Do not forget your password in order not to fail to operate the receiver.

## Factory Default

- If you want to bring the receiver back to the factory default condition, select Factory Default and press **OK** key.

Then Warning message will be displayed. To confirm select **OK** and press **OK**.

**Warning** : You will lose all of data and information which was installed.





# GENERAL VIEWING FUNCTION

## Select Channel

- If you want to select channel, use **CH** key on the front panel or **PR+**, **PR-** key on the RCU or numeric key on the RCU to select a channel and press **OK** key on the RCU. In addition to the above normal function, the receiver provide more convenient channel change function.
- While watching, press **OK** key on the RCU. Then channel list will be displayed on the right side of the screen. If press **EXIT** key, the channel list will be disappeared.
- To select a channel, go up and down of this channel list and place cursor on a desired channel. Then, press **OK** key to watch the selected channel.
- If you press **▲ ▼** key on the RCU, channel list will more upgrade down page by page.



## Pause the frame

- Press **PAUSE** key on the RCU to pause the screen. To bring it back to the normal mode, press **PAUSE** key once again.

## Previous channel recall

- Press **PR** key on the RCU to move the previous channel which you watched before.

## TV & Radio mode

- While viewing TV channel, press **TV/RADIO** key on the RCU to move radio mode. Press this key once again, it will bring you back to the TV mode.



# GENERAL VIEWING FUNCTION

## Channel Information

- Every time you change channels, you will receive program information for a few second.
- While watching channel, you can see the current channel information anytime, pressing **INFO** key on the RCU.

**Note** : Channel information will be displaying for 6 seconds and disappeared. You can adjust the display time interval from 2 to 12 seconds.



## Volume & Audio Control

### 1) Volume Control

To increase or decrease volume, use  $\blacktriangle$   $\blacktriangledown$  key on the RCU or **VOL** on the front panel.

**Note** : The receiver has 18 volume levels and this shall be controlled from the adjusted volume level of your TV.

### 2) Mute

To mute the sound, press  $\text{MUTE}$  button on the RCU. To bring back the normal sound, press this key once again.

### 3) Audio Control

Press the  $\text{L/R}$  key repeatedly to select one of three possible Audio settings (Left, Right and Stereo) .

The current audio condition will be displayed in the channel information.

### 4) Language Selection

Press the **AUDIO** key on the RCU repeatedly to select audio-language. This is dependent on the transmission of audio signal which supports Multi-language.



# GENERAL VIEWING FUNCTION

## Favorite List

- If you want to have a favorite group lists which were made in the channel manager, please press **FAV** key on the RCU.

You can access next favorite group when you press **FAV** key one more.

- The method of grouping of favorite channel list will be explain in the Favorite Channel (page 20).



# CHANNEL MANAGER

- The receiver provides most powerful channel managing function in the world and this function allows you to have a more interesting and useful operation as well as watching channels simply.

## Channel Manager

- Channel manager consists of TV channel, Radio channel. Press **OK** key placing the cursor on the TV Channel.

**Note** :Since the usage of Radio Channel is same as that of TV channel, in this manual only TV Channel manager is explained.

- In the left side of TV channel menu, you can see the channel list which were already searched and in the right side, you can watch the current channel in small Picture in Graphic (PIG) mode (1/9 size of the normal) and you can see channel information under the PIG screen.

When you move cursor from one channel to another, PIG will change accordingly.

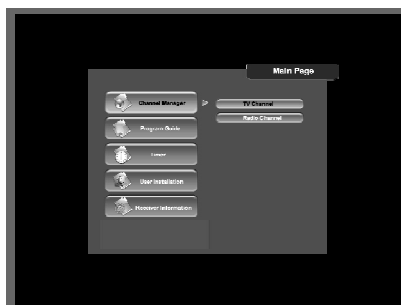
- You can utilize those color keys on the RCU as below :

1. Delete mode(Red key)
2. Favorite mode(Green key)
3. Move mode(Yellow key)
4. Lock mode(Blue key)


Also, press **MENU** key on the RCU, then command menu will be displayed.


TV channel manager has 3 commands as below :

1. Rename Favorite group
2. Rename
3. Sort



## Favorite Channel

- When you select channel manager, default favorite list will be showed on the screen as Favorite 1.
- Select your favorite channel and then press **OK** key. Then  will be marked at rear of your selected channel name.


And if you want to delete the channel name in the favorite channel list, press **OK** key once again, then the  mark will be disappeared.



# CHANNEL MANAGER

## Favorite Channel

- After the selection of favorite channels press **EXIT** key twice to save data and press **FAV** key repeatedly to see if each of the favorite groups are properly selected.

-  means scrambled channel.

### How to make favorite group :

1)When you enter channel manager, the default favorite group will be showed once on the screen as Favorite 1.

2)If you press favorite key (Green color key) on the RCU, new favorite group will be created newly as Favorite 2 and Favorite 3.

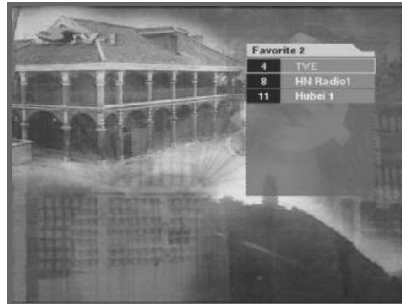


### How to edit the name of Favorite group :

1)In the favorite mode, press **MENU** key on the RCU then the command box will be displayed on the screen.

2)Select **"Rename Favorite group"** in the command box.

3)You can edit the name by using keypad.



## Move Channel

- In the TV channel manager page, press **Move** key (Yellow color key) on the RCU. Select a channel by pressing **OK** key and move the cursor to the location in which you want to move the selected channel and press **OK** key. Then, you will find the selected channel is moved to the desired location and channel no. also changed in order accordingly.

- And check whether the channel number is changed on the channel list.



# CHANNEL MANAGER

## Lock Channel

- In the TV channel manager page, press **Lock** key (blue color key) on the RCU.
- This **Lock** command allow you to lock the channel. First select the channel, which you want to lock, and press **OK** key and then will be marked at rear of your selected channel name.

**Note :** To perform this function, you should set up the Parental Lock in advance.



## Rename Channel

- In Main Page, press **MENU** key on the RCU, and then select **Rename** on the command menu.
- This **Rename** command allow you to rename the channel. First select the channel to be renamed and press **OK** key, then, Keypad dialog box will be displayed. Edit your desired name entering word or number. To delete characters or numbers, select in the keypad dialog.



- And check whether the channel name is changed on channel list properly or not.

# CHANNEL MANAGER

## Delete Channel

● In the Channel manager, you can enter **Delete CH** mode, if you press **Delete** key (Red color key) on the RCU. Then, if you press **Delete** key (Red color key) repeatedly, the mode will be changed to be **Delete TP -> Delete Satellite -> Delete All -> Delete CH**.

● This **Delete** command allows you to delete the channel permanently. First select the channels, which you want to delete, then selected channel number will be marked to **X**. If you cancel the selection, press **OK** key again, then the marked number will be back.

● If you decided to delete, press **EXIT** key and then Message box will be displayed. Press **OK** to delete.



● And check whether the channel number is deleted on channel list or not.

**Warning** : The deleted channel can not be recovered unless you search again. Please be careful when you decide to delete channel.

## Sort Channel

● In Main Page, press **MENU** key on the RCU, and select **Sort** on the command menu.

● This **Sort** menu has its sub command and it allows you to sort the channels as you like.

● You can sort the channels by **Favorite**, **Lock**, **Scramble**, **SAT** name and **CH** name. Place the cursor on your desired line, and then press **OK** key.



● And check whether the channels are sorted properly on the channel list or not.

**Note** : Radio Channel Manager has the same operation as TV channel Manager.



# EPG(Electronic Program Guide)

- The receiver provides EPG function for you to get access to the TV Guide(or Radio Guide if you are listening to radio channels) which will show the titles and other information of the current and next programs on different channels. The information is only available from the network to which the channel you are watching belongs.



- Then EPG box will be displayed.

You can see the channel in the PIG screen, channel list in the left side and Program schedule for selected channel will be displayed in the right side. The time will be displayed relating to the program schedule.

Select one channel and placing the mark on the time of Program name which detail information you want to know. Then you can see blue button, if there is details information of the channel. And press **Detail** (Blue color key) key on the RCU, then detail information box will be displayed.



If you want to check the former or later information of the channel, please press +6:00 key (Yellow color key) or -6:00 key (Green color key) on the RCU.

**Note** : A No data available message will be shown if the selected channel does not provide EPG date.

## Receiver information

Pressing this button will show the hardware and software information about the receiver.

# TIMER

- The **TIMER** function allows you to program the timer with various ways. This function is one of the strong point of the receiver.

To activate the **Turn On Time** and/or **Turn Off Time** , select **YES** and enter your desired time.

**Note** : The receiver display the time which is given by satellite, so there may be some differences between actual time and the receiver's time.

## Easy Timer

- To activate the **Turn on time** and/or **Turn off the time** , select **YES** and enter your desired time.

And you can also select channel which will be turn on or turn off.

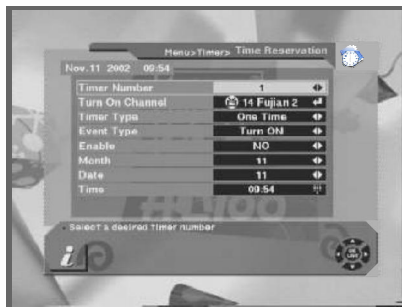
**Note** : Easy timer is default for the first time.



## Advanced Timer

- Advanced Timer allows you to program the various timer function.

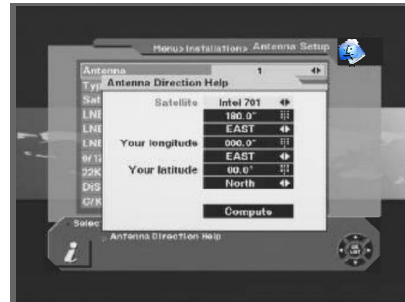
You can set the timer daily, weekly, monthly and yearly.



# ANTENNA DIRECTION HELP

- Although you entered correct value in Antenna Set up menu, if your antenna is positioned incorrectly, you could not receive signal from the Satellite.

So the receiver provides **Antenna Direction Help** in order for you to have exact information to direct your antenna toward a satellite.

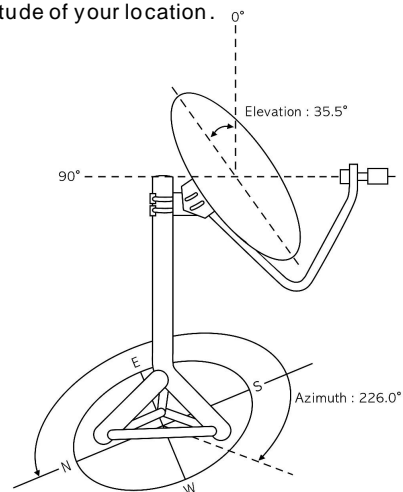


First select your desired Satellite name and then the location of selected satellite will be displayed. In case the location of the satellite is changed, you can re-set the new location.

Second, enter the value of Longitude and Latitude of your location.

- If you entered correct value of your position, place your cursor on Compute and press **OK** key.

Then the receiver show the exact information of antenna pointing.



## FRONT PANEL DISPLAY



UP LOAD PROCEDURE



VCR MODE



DOWN LOAD  
PROCEDURE



SYSTEM WAITING



ERROR IN DATA  
TRANSMITTING



FLASH ROM ERROR



TV MODE



SYSTEM BOOTING



TIME  
(STAND BY INDICATOR)

## TROUBLE SHOOTING

Problem	Possible causes	What to do
The display on the front panel does not light up.	Main cable is not connected.	Check that the main cable is plugged into the power socket.
No sound or picture, but the front panel shows red light.	The receiver is in standby mode.	Press the standby button.
No sound or picture.	The satellite dish is not pointing at the satellite.	Adjust the dish. Check the signal level in the Antenna Setup menu.
	No signal or weak signal.	Check the cable connections, LNB and other equipment connected between the LNB and the receiver, or adjust the dish.
	The satellite dish is not pointing at the satellite.	Adjust the dish.
	Signal is too strong.	Connect a signal attenuator to the LNB input.
Bad picture / blocking error.	Satellite dish is too small.	Change to a larger dish.
	LNB noise factor too high.	Change to an LNB with lower noise factor.
	The LNB is faulty.	Change the LNB.
The picture is not showed on the screen, when switching on.	The system is connected by RF leads.	Check the UHF channel fixed in your system and tune the UHF channel properly.
There is interference on your digital satellite channels, an existing terrestrial channel or video signal.	The system is connected by RF leads and the output channel of the receiver interferes with an existing terrestrial channels or Video signal.	Change the receiver output channel to a more suitable channel, or connect the system by SCART leads.
The RCU is not working.	Battery exhausted.	Change the batteries.
	RCU is incorrectly aimed.	Aim RCU at the receiver, or check that nothing blocks the front panel.

● **Note** : If you have tried all of the actions suggested above, without solving the problem, please contact your dealer or service provider.

— |

| —

— |

| —

