

OPENBOX S10



HD PVR USER'S MANUAL

SAFETY PRECAUTION

CAUTION:



The lightning flash with arrowhead symbol, within an equilateral triangle, is intended to alert the user to "dangerous voltage" and to prevent from a risk of electric shock.

CAUTION

**RISK OF ELECTRIC SHOCK
DO NOT OPEN**

Warning:

To reduce the risk of electric shock, don't open the cabinet. Refer servicing to qualified personnel only.



The exclamation point within an equilateral triangle is intended to alert the user to important operating and maintenance (servicing)

WARNING: Do not use this STB where contact with or immersion in water is a possibility. Do not use near flower vase, washbowls, kitchen sinks, laundry tubs, swimming pools, etc.

WARNING: Do not put the candle or lamp stand on the cabinet, otherwise, there is the danger of fire.

WARNING: The unit should be connected to a power supply only of the type described in the operating instructions or as marked on the unit. If you are not sure of the type of power supply (for example, 120 or 230 V) to your home, consult your local dealer or local power company.

WARNING: This product installs diodes. Do not open the cabinet or touch any parts in the inner mechanism. Consult your local dealer for technical service if the opening is required.

Note: To ensure proper use of this product, please read this User manual carefully and retain for further reference.

Note: This product installs diodes. Do not open the cabinet to avoid the unit direct exposure to radiation.

Unit Cleaning: After the unit power is turned off, you can clean the cabinet, panel and remote control. With a soft cloth lightly moistened with a mild detergent solution.

Attachments: Never add any attachments and/or equipment without the manufacturer consent; as such additions may result in the risk of fire, electric shock, or other personal injury.

Locating: Slots and openings in the cabinet are provided for ventilation to protect it from overheating. Do not block these openings or allow them to be blocked by placing the STB on a bed, sofa, or other similar surface, nor should it be placed over a radiator or heat register.

Power-Cord Protection: Place the power-supply cord out of the way, where it will not be walked on. Please take special attentions to cords at plugs, convenience receptacles, and the point where they exit from the unit.

Object and Liquid Entry: Never put objects of any kind into this STB through openings, as they may touch dangerous voltage points or short-out parts that could result in a fire or electric shock. Never spill any liquid on the STB.

Note: Moisture may be formed on the lens in the following conditions:

- when the unit is suddenly moved from a cold environment or an air-condition room to a warm place.
- immediately after a heater has been turned on.
- in a steamy or very humid room.

If the moisture forms inside the unit, it may not operate properly. To correct this problem, turn on the power and wait about two hours for the moisture to evaporate.

store.FridgeFTA.info

Parts Replacement: When the unit parts need to be replaced, user should make sure the service technician use the replacement parts specified by the manufacturer or having the same characteristics as the original part. Unauthorized replacement may put the unit in the risk of fire, electric shock or other hazards.

Safety Check: After all the maintenances and repairs are done, user is required to request the service technician to conduct the overall safety check to ensure the machine is in the proper condition.

Feature SPEC

Power Supply	Input 100V ~ 240V 50/60Hz
Power Consumption	30W Max / 1W Standby (it's optional by customer's board)
RS232	For FW Upgrading.
Standard Receiver Standard	DVB-S2 Standard (ETSI EN 302 307)
Input Frequency Range	950MHz ~ 2150MHz
Input Signal Level	-25dBm ~ -65dBm
Demodulation	QPSK, 8PSK, 16APSK
Transport Stream	MPEG-2 ISO/IEC 13818 Transport Stream Specification
MPEG Profile Level	MPEG2 SD, MPEG2 HD, H.264/AVC SD, H.264/AVC HD
LNB Power & Polarisation	Vertical +13.5V, Horizontal 18V, Current: MAX 500ma,
Multi Satellite receiving	22K switcher, DiSEqC1.0, DiSEqC1.1, Unicable, DiSEqC1.2, USAL
Conditional Access system	1 Common Interface Slots ; 1 CA card reader Slots
A/V Output ports	RCA with CVBS, HDMI(HDCP), Left/Right analog audio output(RCA), Digital audio output
Aspect Ratio	Auto, 16:9 Pillar box, 4:3 Pan & Scan, 4:3 Letter Box.
Audio Decoding	MPEG1 layer I, MPEG1 layer II, MPEG1 layer III, MPEG2, AC3.
Audio Mode	Stereo/MONO/Left/Right
DVR supporting	DVR with USB HDD, Time shifting with USB HDD
USB2.0 High Speed HOST	1 USB2.0 Port, USB media player to playback the media in USB flash disk or USB HDD or USB card reader with memory card or FW Upgrading.
File system	FAT12, FAT16, FAT32, NTFS (only support first partition)
Media Supporting	JPG, BMP, MP3, WMA
Ethernet Interface	10/100Mbit
Storage Temperature	0°C to +50°C
Operating temperature	

OpenBox S10 HD PVR User's Manual

Rev 1.00 10 May 2011

(C) 2011 FridgeFTA & OpenBoxS10.info

All rights reserved. Modification and publishing/printing to other websites is forbidden.

Information and specifications subject to change without notice.

store.FridgeFTA.info

CONTENTS

1. Remote Controller	7
2. Basic Operations	8
2.1 Turn on STB	8
2.2 Power	8
2.3 Channel Up/Channel Down	8
2.4 Volume Up/Volume Down	8
2.5 Number	8
2.6 Mute	8
2.7 Pause	8
2.8 Recall	8
2.9 Favorite	9
2.10 Audio	9
2.11 Information	9
2.12 EPG	9
2.13 TV/RADIO	10
2.14 Channel List	10
2.15 Sleep	11
2.16 Page Up/Page Down	11
2.17 TEXT	11
2.18 Subtitle	11
2.19 Find	11
2.22 Menu	11
2.23 Video Format	11
2.24 Exit	11
3. Channel	12
3.1 TV Channel List	12
3.1.1. Favorite	12
3.1.2. Lock	12
3.1.3. Skip	13
3.1.4. Move	13
3.1.5. Edit	13
3.1.5.1 Sort	13
3.1.5.2 Edit	13
3.1.5.3 Delete	14
3.2 Radio Channel List	14
3.3 Delete All	14
4. Installation	14
4.1 Antenna Connection	14
4.2 Satellite List	15
4.3 Antenna Setup	15
4.4 Single Satellite Search	17
4.5 Multi Satellite Search	18
4.6 TP List	18
4.7 Other	19
5. System Setup	19
5.1 Language	19
5.2 TV System	20
5.3 Local Time Setting	21
5.4 Timer Setting	21
5.5 Parental Lock	21
5.6 OSD Setting	22
5.7 Favorite	22

6.Tools	23
6.1 Information	23
6.2 Factory Setting	23
6.4 Common Interface	24
6.5 Upgrade By USB	24
6.6 Remove USB device Safely	25
7. Network Local Setting	25
REC	25
8.1 Music & Picture	25
8.2 Record manager	27
8.2.1 Lock	27
8.2.2 Delete	27
8.2.3 Rename	27
8.3 HDD Information	27
8.4 HDD Format	27
8.5 TimeShift	27

store.FridgeFTA.info

Quick Start

Front Panel



Rear Panel



- LNB IN: connect to satellite antenna
- LNB OUT connect to the other receiver
- AUDIO R/L: connect to audio R/L to tv or audio tuner
- CVBS: connect tv through RCA
- RS-232 connect to a pc for s/w upgrade
- POWER: on/off
- PVR: connect to usb
- Ethernet: connect to the internet
- HDMI: connect to tv set hdmi input

1.Remote Controller

DVR Info

Power
TV/Radio
Mute
Satellite List

Audio Select
Page up/down
Volume +/-
EPG

Vformat
(DONT TOUCH!)

Menu
Exit

Information

Function
color keys

DVR/Record/
Timeshift keys

Zoom (brings up
sat list)
Recall/last channel

Find

Sleep

store.FridgeFTA.info

2. Basic Operations

2.1 Turn on STB

First, press the [Device's Main Power] to turn on the Unit.

When the STB is first used, there will play the first channel from the default Channel List. If the STB is not first used, STB will play the same channel as last time before turning off.

? Frequently Asked Question

Q: The power of my STB has been turned on and not in Standby mode, but the TV screen showed nothing:

A: Make sure the TV set has been set to the correct video input (not the TV channels). For example, if you have connected the unit with the Video1 input of the TV set, the TV set has to be switched to Video1.

Q: The power of my STB has been turn on and not in Standby mode, but the TV screen showed nothing except "one ball with No Signal image".

A: That means the channel, which you select, is no signal. It could be several causes:

- 1 The channel which you select is not in your allocate satellite. The simply solution is to change Channel.
- 2 The signal of current TV channel is too weak. You can try to change channel to other strong signal channels. If the problems still exist, please consult your local dealer or other professionals for technical service.
- 3 You use the Dual LNB, and you need Modify LNB Type

2.2 Power

- 1 Press [Power] Key can enter the Standby state back the unit and go on play the previous channel
- 2 In Standby state, press [Power] Key again can call
- 3 User can also disconnect the device's main power to end the Standby state.

2.3 Channel Up/Channel Down

In full screen, press [CH+/CH-] to change channel.

2.4 Volume Up/Volume Down-

In full screen, press [VOL+/VOL-] to adjust volume.

2.5 Number

In full screen, use number key and press [OK] on the Remote Control Unit to change channel.

2.6 Mute

- 1 Press [MUTE] key to mute the sound and the screen will show up mute OSD.
- 2 Press [MUTE] key again to restore sound.

2.7 Pause

- 1 In playing mode, press [Pause] key, the picture will be paused, but the sound of the channel will still continues.
- 2 Press [PAUSE] key again, the screen's picture will skip over to the current playing picture, and the sound of the channel will corresponding playing.

2.8 Recall

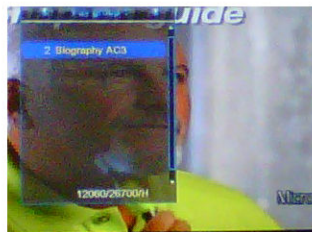
Press [RETURN] key will directly switch to the previous channel that you played before current channel.

2.9 Favorite

1 In full screen, press [FAV] key, it will display a window of "Favorite Group" on the left of the screen, which you can watch like below.



- 2 In the window of "Favorite", you can move highlight by press [Channel Up/Channel Down] key and press [OK] key to select favorite group.
- 3 In the window of "Fav group X", you can move highlight by press [Channel Up/Channel Down] key and press [OK] key to select favorite channels. Pressing [Page Up/Page Down] keys can implement the "Page up/Page down" function



- 4 You also can press [Volume Up/Volume Down] keys to select different "Favorite Group".
- 5 Press [Exit] key to exit the current window

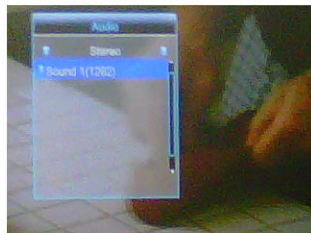
? Frequently Asked Question

Q: Why the screen displays "No Favorite Channel", after pressing [Favorite] key?

A It is because that you haven't set any channels as "favorite channel". Please refer to Favorite

2.10 Audio

1 In full screen, press [AUDIO] key can open the "Audio" window on the screen



- 2 You can modify the audio track by press [Channel Up / Channel Down] key and modify the audio mode by press [Volume Up / Volume Down] key.
- 3 Mode: Left/Right/Stereo/Mono

2.11 Information

In full screen, press [INFO] key can open information screen, in the window shows the parameters of current channel.

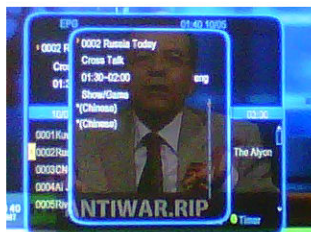


2.12 EPG

1 The STB has an Electronic Program Guide (EPG) to help you navigate channels through all the possible viewing options. The EPG supplies information such as channel listings and starting and ending times for all available channels. Press [EPG] key to display EPG screen

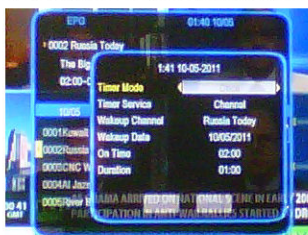


- 2 Press [OK] key in each item can see more detail information and press [Red] key to cancel



- 3 Press [Red] key in EPG menu can display "Time Bar" Menu. In "Time Bar" menu, you can press Left/Right] to [select "back/current time/last program or -0:30/next program or +0:30/-2:00/+2:00/last day/next day". Press [Up/Down] key to channel change.

- 4 Press [Green] key in EPG menu can open timer menu. User can save a timer as he want.



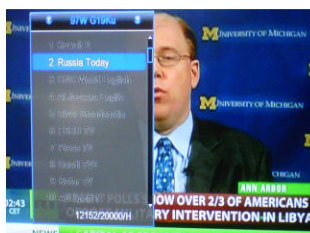
- 5 In EPG menu, press [Exit] to close EPG screen.

2.13 TV/RADIO

In TV mode, pressing [TV/RADIO] key can switch to Radio mode. In Radio mode, press [TV/RADIO] key to switch to TV mode.

2.14 Channel List

- 1 In full screen, press [OK] key or [CH.LIST] can enter "Channel List".



- 2 Press [Left/Right] key to change satellite.
3 Press [Up/Down] key to move highlight and press [OK] key to play the highlighted channel.
4 Press [Page Up/Down] key to page up and page Down
5 Press [Exit] key to exit the channel list.

2.15 Sleep

- 1 This function can set sleep timer. When you set a sleep timer and the time arrive, the system will enter to standby automatically.
- 2 Pressing [SLEEP] key, it will switch the mode between Sleep Timer Off /10/30/60/90/120 Minutes.

2.16 Page Up/Page Down

- 1 In Channel list, press [Page+/Page-] key can page up and page down the channel list.
- 2 In full screen, press [Page+/Page-] key can switch satellite directly.

2.17 TEXT

- 1 Press [TEXT] key in full screen, you can open teletext page on the channel which has teletext information.
- 2 If the channel has no teletext information, it will show "No Teletext Data" on the screen.

2.18 Subtitle

- 1 Press [SUBTITLE] key in full screen, you can switch subtitle on or off.

2.19 Find



- 1 Pressing [FIND] key in full screen can open the "Find" window like above. Press Left/Right/Up/Down [key] to move highlight and press [OK] key to input the selected symbol or letter into the dialogue. The search result display on the right screen. You can press [Red] key to delete the char, press [Blue] key to confirm, press [Green] key to cancel
- 2 Pressing [Exit] key can close "Find" window.

2.22 Menu

- 1 Press [MENU] key can open the menu, exit the current menu to last menu or close the window.

2.23 Video Format **DO NOT TOUCH!**

- 1 Press [V.Format] key under Full Screen playback for 1s, it will show the current system outputting video resolution, continuously press this key, system will switch its outputting video resolution by sequence 576i -> 480i -> 576P -> 480P -> 720P_50 -> 720P_60 -> 1080i_25 -> 1080i_30.

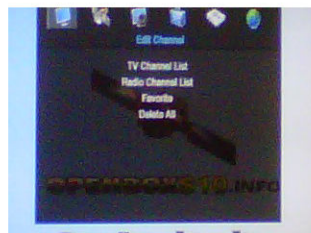


2.24 Exit

- 1 Press [EXIT] key can exit the current menu to last menu or close the win

3. Channel

When you press [Menu] key to enter menu, there will display the picture like below:



- 1 Press [Up/Down] key to select menu pages among Edit Channel, Installation, System Setup, Tools, Network Local Setting and REC(Multimedia)
- 2 Press [OK] or [Right] key to enter the "Edit Channel". If Menu Lock is "On", it will display an dialogue for user to key in password. The default Password is "0000"
- 3 Press [Up/Down] key to select menu items among TV Channel, Radio Channel and Delete All
- 4 Press [Left] key or [Exit] key to go back to main Menu.

3.1 TV Channel List

When you enter to "Channel List" menu, there will display the screen like below.



- 1 You can move highlight by press [Channel Up/Channel Down] key and press [OK] key to preview the current highlighted program in the right side preview window.
- 2 You can press [Page Up/Page Down] key to implement the Page Up/Page Down function
- 3 You can press [Page Up/Page Down] key to switch "Program Group"
- 4 You can use [Volume Up/Volume Down] key to
- 4 You can press [Menu] or [Exit] keys to go back to "Edit Channel" menu.

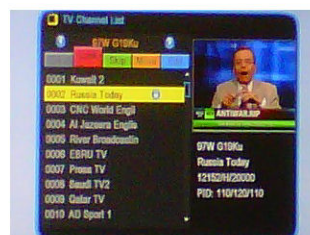
5 Press color key can implement the corresponding function in "Channel List"

3.1.1. Favorite



- 1 Pressing [FAV] key, then pressing [OK] key can open the "Favorite" window like above
- 2 You can move highlight between 8 favorite groups by pressing [Channel Up/Channel Down] key and press [OK] key to make a favorite mark in the left side of the selected Favorite group.
- 3 Pressing [OK] key on the marked Favorite group can cancel the exist favorite mark.
- 4 After marking, pressing [Exit] key can back to "TV Channel List", there will show a favorite mark beside the marked channel.

3.1.2. Lock



- 1 Press [Red] key can enter lock mode.
- 2 Press [Up/Down] key to move the highlight and press [OK] key, it will display a dialogue to ask you to input password. The default password is "0000" If you input the correct password you can see a "lock mark" in the right side of the highlighted channel.
- 3 After save and exit menu, STB will request you to input the password while you want to watch the locked channel.



- 1 Press [Green] key can enter skip mode.
- 2 Press [Up/Down] key to move the highlight and press [OK] to make a "skip mark" in the right side of the highlighted channel.
- 3 After save and exit menu, the channel will be skip while user change channel in the full screen.

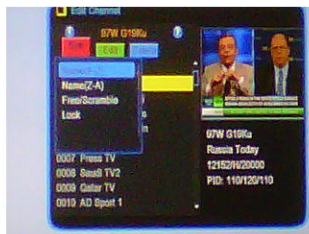
3.1.4. Move



- 1 Press [Yellow] key, then press [Up/Down] key to move the highlight and press [OK] key to make a mark. There will show a "moving mark" in the right side of the selected channel like above
- 2 You can move the selected channel to the position that you want to place by press [Up/Down] key. And press [OK] key to confirm your decision.

3.1.5. Edit

- 1 Press [Blue] key will open "Edit" menu.
- 2 Press [Exit] can exit "Edit Channel" menu. If you do modification in "Edit Channel" menu, the system will show up a message box to inquire you whether saving or not when exit.



- 1 Press [Red] key can open the "Sort" window like above. There are four kinds of sorting ways. You can press [Channel Up/Channel Down] key to move highlight and press [OK] key to confirm your selection
- 2 The five kinds of sorting way are:

- ✧ Name (A-Z): Sorting in Alphabetical Order, ignore "\$" symbol
- ✧ Name (Z-A): Sorting in Alphabetical Order, ignore "\$" symbol.
- ✧ FTA: Sort channel through free and scramble sequence. Free channel will in the front of channel list and scramble channel will at the rear of channel list
- ✧ Lock: Accumulated all locked channels and list in the last of TV Channel List.

3.1.5.2. Edit

In "Edit Channel" menu, press [Green], then press [Up/Down] key to move the highlight and press [OK] key to open the "Rename" window. It shows the window like below:



- 1 Press [Red] key can switch whether capital or not.
- 2 Press [Green] key can delete the char on the Cursor
- 3 Press [Yellow] key can save the modification.
- 4 Press [Blue] key can cancel the operation.

3.1.5.3. Delete

Press [Blue] key, then press [Up/Down] key to move the highlight and press [OK] key to make a delete mark in the right side of the highlighted channel. After save and exit "Edit Channel" menu, the marked channel will be deleted.

3.2 Radio Channel List

Basically, the operation of "Radio Channel List" is same as "TV Channel List", but there is one point different: In "Radio Channel List" mode, there is no video information, so it will always display Radio's logo in the right side preview window.



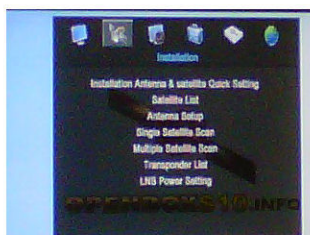
? Frequently Asked Question

Q: IF I incautiously delete all channels,

What should I do?

A: there are two ways to restore:

- ★ To re-search all channels in "Installation" function.
- ★ Use "Factory Setting" function to restore all channels in "Tools" function.



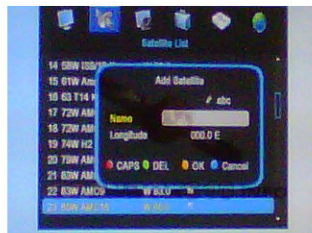
3.3 Delete All

- 1 Press [Ok] key, it will show up a warning message box to inquire you whether delete all or not.



- 2 If you select "Yes", all channels will be deleted.
- 3 If you select "No" or press [Exit] key, you can exit the function directly without save.

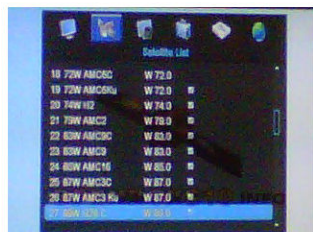
- 1 Press [Up/Down] key to select menu pages among Edit Channel, Installation, System Setup, Tools, network local setting and REC(multimedia)
- 2 Press [OK] or [Right] key to enter the "Installation". If Menu Lock is "On", it will display an dialogue for user to key in password. The default Password is "0000".
- 3 Press [Up/ Down] key to select menu items
- 4 Press [Left] key of [Exit] key to go back to main menu



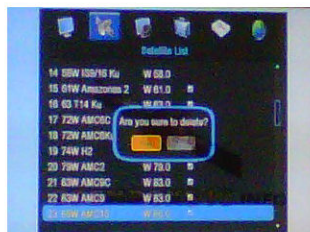
3 Press [Yellow] key, you will be asked "Are you sure to delete?". Select "Yes" to delete the satellite that highlight focus on. Select "No" to cancel the operation.

4.2 Satellite List

When you enter to "Satellite List" menu, there will display the screen like below.



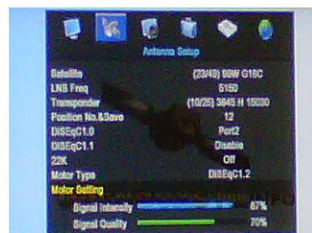
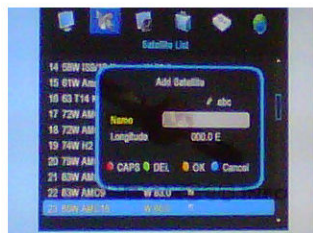
1 Press [Red] key, you can enter edit satellite menu.
You can edit Satellite name and satellite Longitude.



4.3 Antenna Setup

Fixed Antenna

If you select "Fixed Antenna" in "Antenna Connection" menu, there will display the screen like below



2 Press [Green] key, you can enter add satellite menu

In Antenna Setup mode:

store.FridgeFTA.info

1. Satellite: In this item, press [Volume Up/ Volume Down] key can switch Satellites and press [OK] key can enter satellite list for you to select directly.
2. LNB Freq. In this item, press [Volume Up/ Volume Down] key can select the parameter. Options are 5150/5750/5950/9750/10000/10050/10450/10600/10700/10750/11250/11300/5150-5750/5750-5150/Universal (9750-10600)/Unicable(9750-10600)/Unicable10200
3. DiSEqC1.0. You can use [Volume Up/ Volume Down] key to switch options. There are several options for your selection: Disable / LNB1 / LNB2 / LNB3 / LNB4
4. DiSEqC1.1: You can use [Volume Up/ Volume Down] key to switch options. There are several options for your selection: Disable / LNB1 / LNB2 / LNB3 / LNB4...LNB16
5. 22K. You can use [Volume Up/ Volume Down] key to switch "ON / Off". When this item is switched to "ON", receiver will receive TV and radio input signal from 22K port. If the item is switched to "Off", the receiver will receive all signal from OK port.

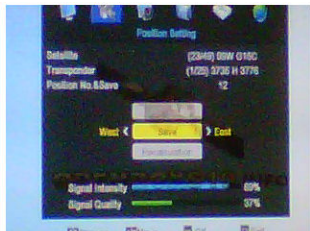
! Notice

When you choose LNB type "Universal", you can not modify 22K.

6. Toneburst: In "Toneburst" item, you can press [Volume Up/ Volume Down] key to switch "Off/On" functions
7. Polarity: In "Polarity" item, [Volume Up/ Volume Down] key to switch "Auto / H / V" functions

5 Motor Setting:

If you select "DiSEqC1.2", "Local Longitude / Local Latitude" is not available. It will show the screen like below.



- ☆ Press [Left/Right] key or [OK] key to change satellite or transponder.
- ☆ Position No & Save. You can press [Left/Right] key or number key to select or input Position NO.
- ☆ Go to X: Press [OK] key to open a list. You can go to X or go to reference.
- ☆ After select "Satellite" and "Position No & Save", you can move the highlight to "West/Save/East" line and press [Left/Right] to move the dish and press [OK] to save the position.
- ☆ Move the highlight to 'Recalculation' and press [OK] key to recalculate.

Set the satellite's longitude and local longitude / local latitude, USALS can move dish automatically. Move the highlight to "Motor Setting" and press [OK] key, it will show the screen like below:

store.FridgeFTA.info

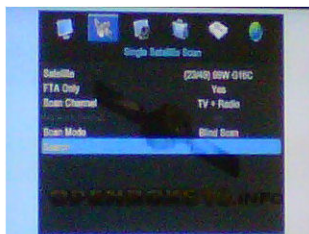
6 Limit Setup:



- 1 When you set "limit setup" to "West Limit/ East Limit", you can move the highlight to "Limit Setup" line and move the dish to west or east by pressing [Left/Right] key manually.
- 2 When you are moving to the target place, press [OK] key to save the point

4.4 Single Satellite Search

When you enter to "Single Search" menu, there will display the screen like below:



- 1 In "Satellite" item, press [Volume Up/ Volume Down] key to select satellite, which you to scan, Otherwise, press [OK] key can open the "satellite list" for you to select directly.
- 2 In "FTA Only" item, press [Volume Up/ Volume Down] key to select scans all channels or just scans free channels. If you select "Yes", it will scan free channels only.
- 3 In "Scan Channel" item, press [Volume Up/ Volume Down] key to select scans TV + Radio Channels, or just TV channels or just Radio channels
- 4 In Network Search, press [Volume Up/ Volume Down] key to select whether network search or not.

! Notice

You can only do network search when you select "Preset Scan".

- 5 In "Scan Mode" item, you can select "Auto Scan" to blind scan or select "Preset Scan" to scan all preset TPs.
- 6 Moving the highlight to "Search" item and press [OK] key to start scanning. Next screen will display the process and show the current scanning channel.
- 7 In the "Single Search" menu, press [Exit] key to draw back from the scanning and meanwhile saving the current value.

4.3 Multi Satellite Search

When you enter to "Multi Search" menu, there will display the screen like below:



- 1 In "Satellite" item, press [Enter] key to see the selected satellite. The system will use DiSEqC1.0 / DiSEqC1.2 / USALS function to search satellite and scan channels. It will scan all the satellite displaying in the bottom box.
- 2 In "FTA Only" item, press [Volume Up/ Volume Down] key to select scans all channels or just scans free channels. If you select "Yes", it will scan free channels only.
- 3 In "Scan Channel" item, press [Volume Up/Volume Down] key to select scans TV + Radio Channels, or just TV channels or just Radio channels. In Network Search, press [Volume Up/ Volume Down] key to select whether network search or not.
- 4 In "Scan Mode" item, you can select "Auto Scan" to blind scan or select "Preset Scan" to scan all preset TPs.
- 5 Moving the highlight to "Search" item and press [OK] key to start scanning. Next screen will display the process and show the current scanning channel.
- 6 In the "Multi Search" menu, press [Exit] key to draw back from the scanning and meanwhile

4.6 TP List

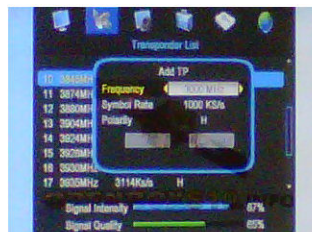
When you enter to "TP List" menu, there will display the screen like below



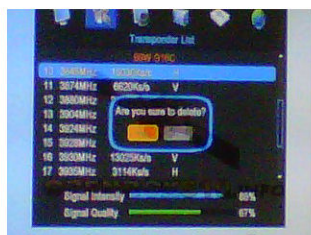
- 1 Press [Volume Up/Volume Down] key, you can switch satellite.
- 2 Press [Red] key, open edit TP menu. User can edit TP info. Frequency: "3000~13450 MHz", Symbol Rate: "1000~45000Ks/s".



- 3 Press [Green] key, open new TP menu. User can add a new TP.



- 4 Press [Yellow] key will open dialog box asking you whether confirm to delete current TP. When select "Yes", you will delete the channel which highlight focus on. When select "No", it will cancel the operation.



- 5 Press [Blue] key will display a dialogue box. You can select "FTA Only, Scan Channel, Network Search" items, then move highlight to "Yes" button and press [OK] to begin to search.



4.7 Other **Note: Under INSTALLATION> LNB POWER SETTINGS**



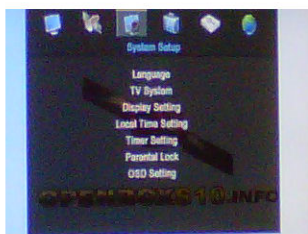
- f In "LNB Power", there are two options, "On" and "Off", for your selection. If the setting is "On", the receiver will supply power to satellite antenna. If the setting is "Off", the receiver won't supply

power to satellite antenna.

- 2 In "Channel Play type", you can set the channel play type. You can select the "playing channels" as "Free", "Scrambled" or "All".
For Example: If you select "Free", in full screen play, all scrambled channels will be skipped when you change channels by use [Channel up/Channel Down] key.
- 3 Press [Exit] to draw back from "Other" menu.

5. System Setup

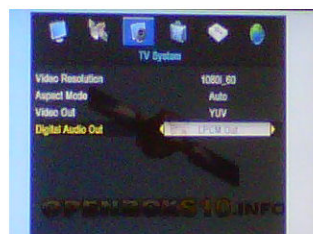
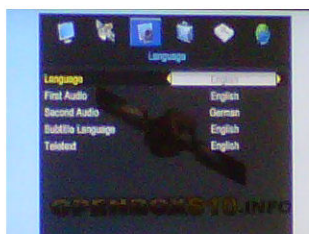
When you enter to "System Setup" menu, you will see the screen like below.



- 1 Press [Up/Down] key to select menu pages among Edit Channel, Installation, System Setup, Tools, Ethernet and Multimedia.
- 2 Press [OK] or [Right] key to enter the "System Setup". If Menu Lock is "On", it will display an dialogue for user to key in password. The default Password is "0000"
- 3 Press [Up/ Down] key to select menu items among TV Channel, Radio Channel and Delete All.
- 4 Press [Left] key or [Exit] key to go back to main menu

5.1 Language

When you enter to "Language" menu, you will see the screen like below.



1 Language: press [Volume Up/ Volume Down] key to select menu languages, the selections of languages include: English, French, German, Russian, Arabic, Portuguese, Turkish, Spanish, Polish and Italian.

2 First Audio: Some channels have more than one audio language for choosing; by this function you can set the first audio for this channel. If the playing channel has the same audio as the "First Audio" you set, system will play this audio language as default. If the channel hasn't the suited audio language, then the system will compare automatically with second audio language. The selections of audio languages include: English, French, German, Russian, Arabic, Portuguese, Turkish, Spanish, Polish and Italian.

3 Second Audio: If the channel has no correspond audio with "First Audio" but have corresponded audio with "Second Audio", system will play the second audio language as default. If no audio language corresponds with the "Second Audio", then the default language of current channel will be played automatically. The selections of audio languages include: English, French, German, Russian, Arabic, Portuguese, Turkish, Spanish, Polish and Italian.

4 Teletext: You can set teletext language. If the streams have this language you can see the teletext in language you set.

5 Press [Exit] key to draw back from "Language" menu.

5.2 TV System

When you enter to "TV System" menu, you will see the screen like below:

1 Video Resolution is for switching the system outputting video resolution

Move highlight on it and press left or right key, it will switch video resolution circularly by the sequence By Source <-> By Native <-> 480i <-> 480P <-> 576i <-> 576P <-> 720P_50 <-> 720P_60 <-> 1080i_25 <-> 1080i_30. This effect is equal to press V.Format Key under Full Screen and their last setting saving will be efficient for each others. By Source means system will set the video output resolution according to the program it's playing, different resolution programs switching perhaps will make TV screen flickering. By Native TV means system will be according to the HDMI TV's max supported resolution to set its resolution, if system is not connected to a HDMI TV, it will set resolution to be default.

2 Aspect Mode is for switching the screen aspect ratio mode. Now we provide below options: 4:3 PS / 4:3 LB / 16:9/Auto. You can press [Left/Right] key to select each mode circularly. 16:9 will provide user pillar box mode it means user use 16:9 TV to display but need to see a 4:3 full display picture. System will force press wide screen picture to be narrow and there're black band on left and right side. Auto means system won't do any aspect ratio translation, 16:9 picture source will be good display on a 16:9 TV but will be too narrow on a 4:3 TV, and 4:3 picture source will be too wide in a 16:9 TV but will be good display in a 4:3 TV.

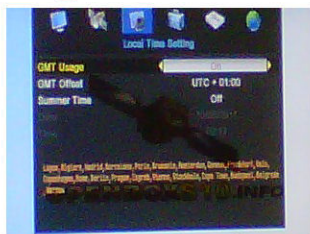
3 RF system and RF channel are for user to set the TV RF modulator output signal VHF/UHF channel and TV system mode. If your TV is too old to support CVBS/YPr/HDMI, you can use TV RF cable to connect STB's TV RF output port to TV Antenna input port.

4 HDMI Video Out is for setting the HDMI video output mode. It has option: RGB-No rmal, RGB-Expand, YCbCr4:4:4 and YCbCr4:2:2. You can press [Left/Right] Key to select each mode circularly.

- 5 Digital Audio Out is for setting the both SPDIF and HDMI's digital audio output mode, it has options LPCM Out, BS Out and Auto. You can press [Left/Right] Key to select each mode circularly. LPCM Out means system will decode no matter AC3 or PCM audio track data to be LPCM, digital audio decoder or HDMI TV will get LPCM digital audio data. BS Out means system won't do AC3 decode just output AC3 RAW data to HDMI. Auto means system will detect which the connected HDMI TV can decode and then output that data. If HDMI TV can decode AC3, system just output RAW data, if HDMI TV can decode LPCM only, system will just decode AC3 or LPCM to be LPCM and then output.
- 6 Press [Exit] key to draw back from "TV System" menu.

5.3 Local Time Setting

Note: As of printing, the clock resets when unit is shut down. OpenBox is working to address this. For timer recording, leave S10 "on".

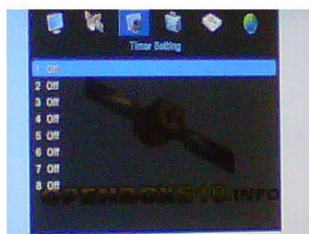


- 1 GMT Usage: This item is used to open the usage of GMT. You can press [Volume Up / Volume Down] keys to switch "On/Off".
- 2 The "GMT Offset" item is valid only when the setting of "GMT Usage" is "On". You can press [Volume Up / Volume Down] keys to switch "GMT Offset" value, and the range is "-12:00 ~ +12:00", increase each half hour progressively.
- 3 Summer Time: This item is valid only when the setting of "GMT Usage" is "On". When "Summer Time" is "On", it will add one hour to the time.
- 4 "Date" and "Time" items are valid only when the setting of "GMT Usage" is "Off". You can press [Volume Up / Volume Down] keys to moving highlight and use number keys to input directly.
i. If the current channel provides the correct time information, you will see the current time while you enter "Time" menu. If the channel doesn't provide time information, you have to input the date and time information manually.

- 5 Press [Exit] key to draw back from "Time" menu

5.4 Timer Setting

Select "Timer Setting" item and press [OK] key to enter "Timer list" menu.



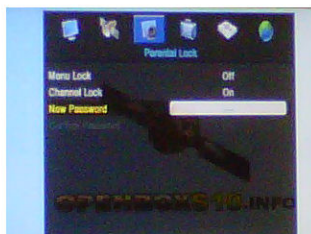
You can press [up/down] key to select a timer, then press [enter] key to open timer menu.



- 1 Current time information will display on the first column; if the current time is incorrect, please modify the time information in "Time" item.
- 2 Timer Mode: There are several modes for Timer to setting, include Off, Once, Daily.
- 3 Wakeup Channel: press [OK] key to enter channel list and select channel that you want to setting.
- 4 Wakeup Date: use number keys to input your wakeup date.
- 5 On Time: use number keys to input your wakeup time. Once the time's up, no matter what the time, system is in standby mode or in playing mode, the system will automatically switch to the channel you want and start to play.
- 6 Duration: After you set a time for "Duration" item, once the time's up, the system will automatically switch to standby mode. If you want not work this function, set the duration is 00:00.
- 7 Move the highlight to "Save" button and press [OK] key to save timer. Select "Cancel" or press [Exit] key to cancel the operation.

5.5 Parental Lock

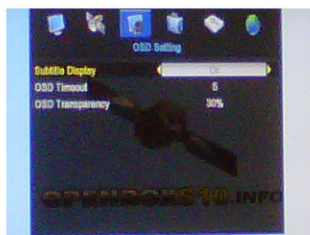
- 1 In "Parental Lock" line, press [OK] key, there will pop an dialogue for you to input the password. Default password is "0000". When you input the correct password, you will see a screen like below



- 2 Menu Lock determining that when users wish to enter "Edit Channel/Installation/Tools" menu, whether have to input Password or not. If the have to key in password, set "No" means unlock.
- 3 Channel Lock determining that when users wish to play the lock channels, whether have to input the password or not. If the setting is "Yes", play the channels with lock mark will show up a dialogue on the screen and ask for the password. If the setting of "Channel Lock" is "No", the Lock function will be invalid.
- 4 New Password is used for revising password; you can input the new password in this item by using number keys directly. After you filled in 4 digital numbers, the highlight will auto skip to Confirm Password and ask you to input the new password again. If the password is correct, the screen will show up a message of "Saving Data, Please Wait . . .". After finish saving and draw back to "System Setup" menu, the revising is complete.
- 5 Press [Exit] key to draw back from the "Parental Lock" menu

5.6 OSD Setting

When you input to "OSD Setting" menu, you will see a screen like below:



- 1 OSD Timeout When you switch channels in full screen, there will show up some information about current channel on the lower of the screen. And regarding to the duration of these information show up on the screen, you can press [Volume Up/Volume Down] key to set the time. The range of the duration is "1 second ~ 10 seconds".
- 2 OSD Transparency: You can press [Volume Up/Volume Down] key to select the values. There are 5 levels of transparency, 10%, 20%, 30%, and 40% and "NO" (means no transparency function).
- 3 Press [Exit] key to draw back from the "OSD Setting" menu.

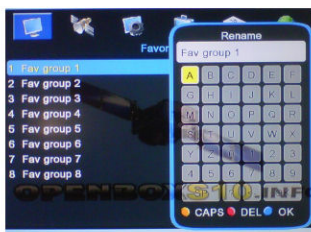
5.7 Favorite

When you input to "Favorite" menu, you will see a screen like below:

Note: This is found under EDIT CHANNEL > FAVORITE



When press [OK] key, you can rename the favorite group's name. It will display the dialogue like below



- 1 Press [Red] key can switch whether capital or not.
- 2 Press [Green] key can delete the char on the or cursor.
- 3 Press [Yellow] key can save the modification.
- 4 Press [Blue] key can cancel the operation.

6. Tools

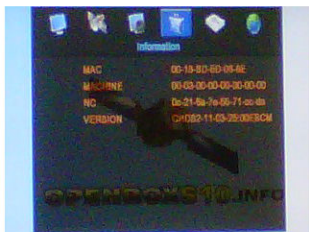
When you enter "Tools" menu, you will see a screen like below:



In "Tools" menu:

- 1 Press [Up/Down] key to select menu pages among Edit Channel, Installation, System Setup, Tools, Network Local Setting and REC(Multimedia).
- 2 Press [OK] or [Right] key to enter the "Tools". If Menu Lock is "On", it will display a dialogue for user to key in password. The default Password is "0000".
- 3 Press [Up/Down] key to select menu items.
- 4 Press [Left] key or [Exit] key to go back to main menu.

6.1 Information



- 1 When you enter to "Information" menu, you will see a screen like above. The screen displays the items as "MAC, MACHINE, NC, VERSION" information.
- 2 Press [Exit] key to draw back from "Tools" menu.

6.2 Factory Setting

When you press [OK] key in the "Factory Setting" item:

- 1 It will show a warning message to inquiry you "The operation will load default and erase all the channels that user added continue?".
- 2 If you select "Yes" option, the all revised parameters of the receiver will reset to default value. Please carefully to using this function.
- 3 In step 1 and step 2, select "No" or press [Exit] key can draw back from this item and without saving.

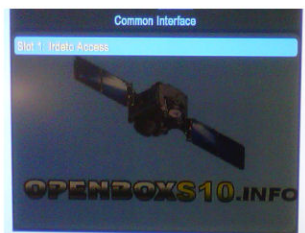




- 3 In the CAM card information menu, you can select each item by pressing [Up/Down] Key and press OK to enter. This information menu format and string is according to CI card itself. So, different card may have different menu of it.
- 4 Enter Change CA PIN can change the pin code of the CA card in this CAM card.

6.4 Common Interface

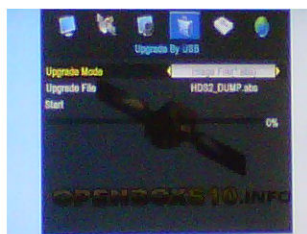
- 1 Press OK Key when highlight on "CommonInterface" will enter the CAM card information Menu select like below:



- 2 Press [Up/Down] Key to select slot 1 Press OK key again to enter this card information menu like below

6.5 Upgrade By USB

- Open Upgrade By USB menu according to Menu
-> Tools-> Upgrade By USB.

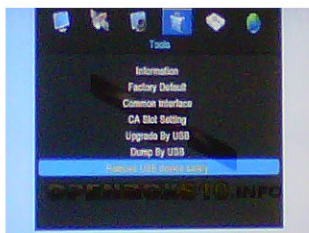


There are two modes for upgrade:
Image File (*.abs) which is full firmware, and **Misc. Files** which allows upgrade of channel list files (TP_PROG.dbs)

store.FridgeFTA.info

6.6 Remove USB device safely

STB plugged USB HDD disk, when you need remove your USB, Open Remove USB device safely menu according to Menu -> Tools-> Remove USB device safely.



Press OK key ,then press " yes" ,your USB is been Safe remove



8. REC Note: titled "Media"

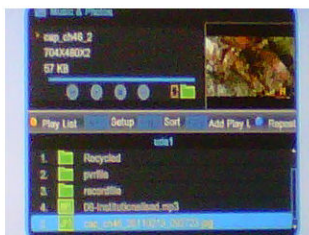
When you enter to "REC" menu, you will see the screen like below:



- 1 Press [Up/Down] key to select menu pages among Edit Channel, Installation, System Setup, Tools, Game, Network Local Setting and REC(Multimedia).
- 2 Press [OK] or [Right] key to enter the "REC". If Menu Lock is "On", it will display a dialogue for user to key in password. The default Password is "0000".
- 3 Press [Up/Down] key and [OK] key to select menu items.
- 4 Press [Left] key or [Exit] key to go back to main menu.

8.1 Music& Picutre

- 1 Press OK Key enter "Music&Picture" menu, please see the blow picture:



You can preview the picture at the top right corner if the scroll bar is on the picture files (JPG, BMP), and show the logo when at MP3 file.
Move scroll bar when press up/down key, page up or down by page key.
Go into sub-directory when press ok key in the file directory, play the selected file when scroll bar is on the file, automatic return Music&Picture menu after play is over.

Color key operation:

Yellow Key:

Show one operation window: please select play list type" by yellow key you can select Music or Image play by Left/Right Arrow key, open the selected Play list if press OK key. There will display "This type of play list does not exist" if there are no any file.

Blue Key:

Press one time Blue key will show
It is shuffle.



Press the key again will show



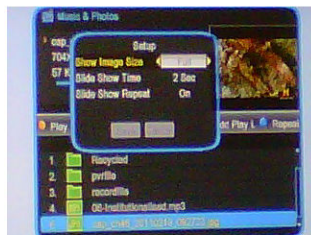
it is repeat one.

Press the key the third times will show
It is repeat all



INFO Key

Press INFO key will show Setup Menu, please see the below setup menu:



Size (Screen) select

Real: show the real size if the image size less than full screen size but only partial image, the image is shown from Left Top corner, don't show for over part

Full: Full screen display and show real size if the image is less than screen

Menu Operation

(1) Setup option

Press up/down key to move scroll bar and switch option by Left/Right key, all option please see the below table

Item	Option	Default
Size	Full/Real	Full
Time	0~10Sec	2
Repeat	Off/On	Off

(2) Save/Ext

Move scroll bar to Save icon, press OK for file save select Cancel and press OK Cancel without save.

FIND Key

press FIND Key will find sort files

0 Key

press 0 key will All the MP3 files in current directory are added into MP3 play list

1 Key

Press 1 key will

press 1 key will All the image files in current directory are added into image play list

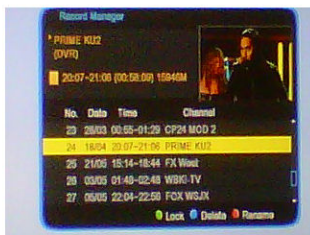
FAV Key

put the file selected by scroll bar to play list when

press FAV Key, in the meanwhile show "Add to Play List", display disappear after about one seconds, the file will be added into MP3 play list if it is one MP3 file, to image play file for one image file

store.FridgeFTA.info

8.2 Record manager



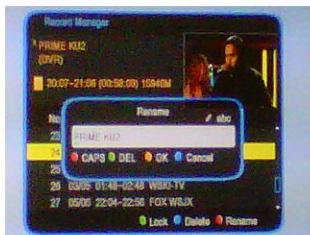
8.2.1 Lock

- 1 Press [Green] key to lock a program on HDD.
- 2 If you want to cancel the lock mark for a program, press [Green] key again. It will ask you to input password. Once you input the correct password, it will cancel the lock feature for the program.

8.2.2 Delete

- 3 Press [Blue] key to make a delete mark on the highlight program.
- 4 If you want to cancel the delete operation, press [Blue] key again to cancel the delete mark.
- 5 When exit the "Record Manager" menu, all the delete mark channel will be deleted directly.

8.2.3 Rename



- 1 Press [Red] key to rename the highlight program. It will show the "Rename" window.
- 2 You can press [Red] key to switch capital and lowercase.
- 3 Press [Blue] key to delete the char on the cursor.
- 4 Press [Yellow] key to save the modification
- 5 Press [Blue] key to cancel the modification

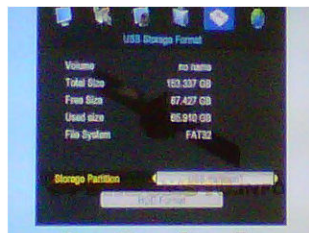
8.3 HDD Information

- 1 Move the highlight to "HDD Information" and press [OK] key. It will display "HDD information" as below:



8.4 HDD Format

- 1 Move the highlight to "HDD Format" and press [OK] key. It will display "HDD Format" as below.
- 2 When you press [OK] key again, it will ask you whether you are sure to format the disk. Select "Yes" to format or select "No" to cancel.

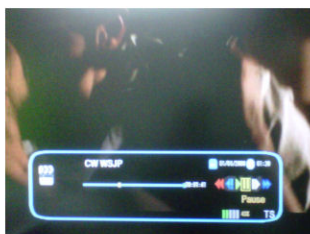


8.5 TimeShift

- 1 Move the highlight "Timeshift" and press [OK] key. It will display "Timeshift" as below..



- 2 Press [Left/Right] to switch timeshift "On/Off".
- 3 If set timeshift "On", it will timeshift the program when user watch TV.
- 4 Press [Info] key to see timeshift OSD as below:



- 5 You can press [Left/Right] to move the slide to left or right. But can not exceed the current time. Press [OK] key to play the point where the slide is.
- 6 You also can press [Pause] / [fast back] / [slow / back] can realize these function. Then it will enter the mode which is playing the recorded program on HDD. (like the picture below) Then you can do pause, fast forward, fast back, slow forward, slow back.
- 7 Press [Stop] key first time to end the playing mode. Press [Stop] key second time to stop the recording

Notes: Time Shifting will only be available when USB HDD is connected to system and read/write speed is high enough to do that.

OpenBox S10 HD PVR User's Manual
Rev 1.00 10 May 2011
(C) 2011 FridgeFTA & OpenBoxS10.info
All rights reserved. Modification and publishing/printing to other websites is forbidden.

Information and specifications subject to change without notice.

store.FridgeFTA.info