

Manhattan[®]

Technology with Vision

RS-1933 High Definition Set Top Box

User Manual

Version 1.1



For up-to-date product information visit us at www.manhattan-digital.net



**DANGEROUS
VOLTAGE**



**IMPORTANT OPERATING
INSTRUCTIONS**

WARNING:

- To reduce the risk of electrical shock, do not open the cabinet.
- Do not place where contact with water or immersion is possible. Avoid exposure to moisture.
- Do not place near fire or open flames. Avoid exposure to excessive heat.
- Slots and openings in the cabinet are provided for ventilation. Do not block these openings.
- The unit should be connected only to the required power supply, as described in instructions or as marked on the unit. If not sure, contact your local dealer or power company.
- Contact your local dealer for technical service if opening is required.

NOTE:

- To ensure proper use, read this manual carefully and retain for further reference.
- Power off the unit when cleaning. You may clean the cabinet, panel, and remote control with a soft cloth lightly moistened with mild detergent solution. Allow to dry before powering on.

Technical Specifications

Hardware

Audio

- MPEG-1 Layers 1,11,11
- MPEG-2 Layer 2
- MPEG-2 AAC LC and LC and AAC+
- MPEG-4 AAC L2 2-Channels / 5.1 Channel MPEG-4 AAC+SBR 2-Channel
- Mono, dual Mono, Stereo, Joint Stereo
- Dolby digital AC-3 through HDMI, SPDIF Coaxial output

Front Panel

- 8 Button Keys
- 4 digit Seven Segment Display

Accessories

- Handset with batteries
- User Manual

System Resources

- ALi 3602 Chipset
- 4 MByte Flash Memory
- 64 MByte RAM Memory

Video

- MPEG-1 (SD)
- MPEG-2 MP@ML (SD) and MP@HL (HD)
- MPEG-4 (H.264) MP@L3 (SD) and MP@L4.1
- Video Format 4.3, 16.9, with Pan Scan Letterbox
- Up-scaling of SD video on HD output
- Down scaled HD video on SD output
- Supported Resolutions: 1080i /720p /480p /576p /480i /576i
- DVBS2 Tuner, Single HDTV Decoder with CI

Rear Panel

- IF in loop through
- 1 x HDMI with HDCP
- 1 x Coaxial SPDIF
- 1 x USB 2.0 port
- 1 x PCMCIA Interface Slot
- Power on/off switch
- 100-240v 50/60Hz @25w

Software

- 5000 C/Ku channel format
- NTSC composite output
- 64 satellites and 8 favorite groups settings
- Recall last channel
- 16 Day EPG
- 8 event timers. Count-down timer
- Update firmware through USB port
- Language support: English, French, German, Russian, Arabic, Portuguese, Turkish, Spanish, Polish, and Italian
- Dolby digital AC-3 downconverted through 2 channel analog audio output.
- OSD Transparency, 10-40%
- Video resolution switch on remote
- User can change Background graphics
- Wake-up Channel Default by user
- DiSEqC 1.0 – off, 1/2-2/2, 1/4 - 4/4
- DiSEqC 1.2, Positioner. Satellite selectable with limits
- DiSEqC 1.3 Support USAL for dish satellite programming

- Polarization H/V Auto
- DVB-S Auto Scan @ 50 TP/S
- Signal strength and quality level support
- IF loop-through for multiple receivers

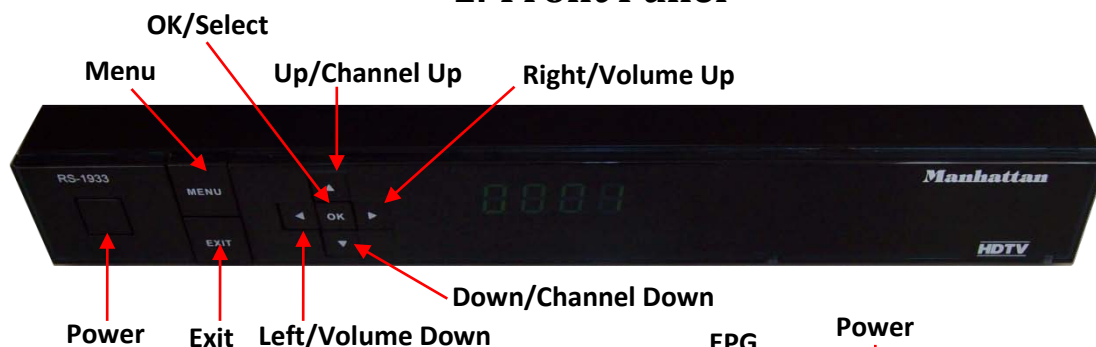
DVR Function;

- Through USB port
- Up to 2.0 TB hard disk capability. Will separate files after 1 TB
- Identifies program, music, and JPEG files independently
- Identifies free space, record time and size
- Time record. Can record in a set time
- Can set FF & RW times in 30s, 1m, 5m, 10m
- Play, pause, and stop function with jump selection
- User can lock, delete, or rename recorded files
- Browse records and preview files
- User can sort by date and time
- Hard Drive not included

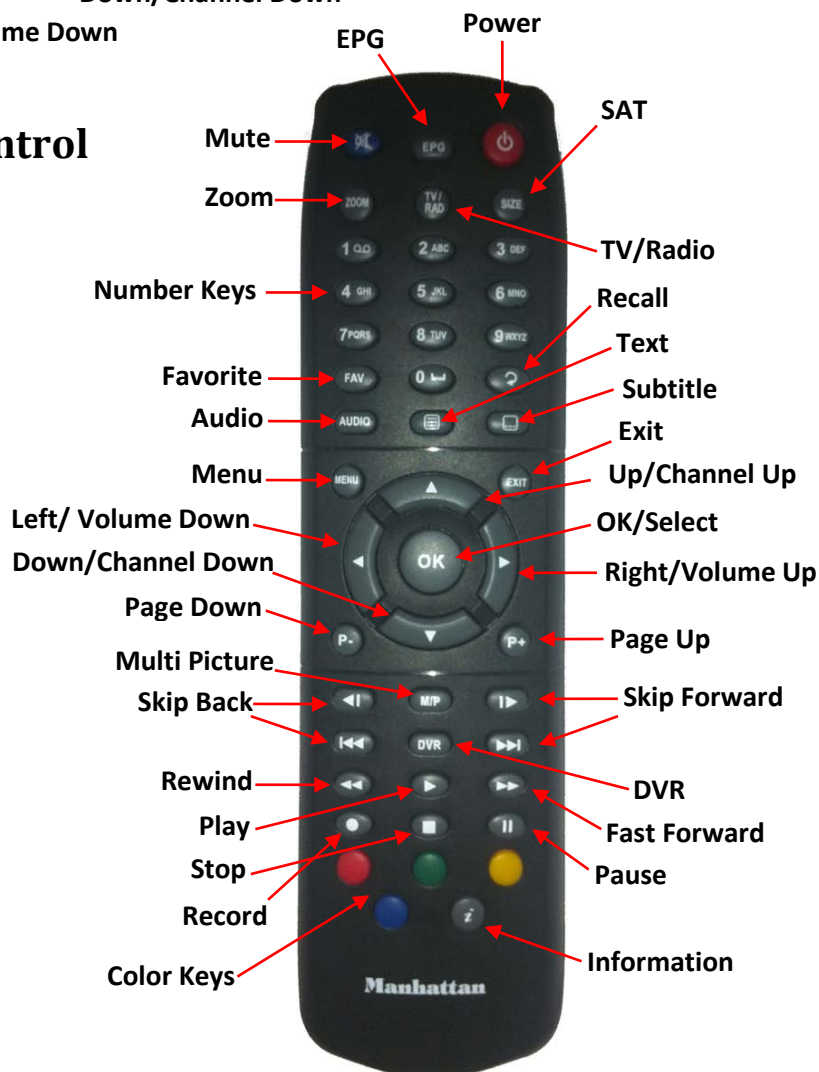
Contents

1. Getting Started	1	5. System Setup	13
1. Front panel	1	1. System Setup	13
2. Remote Controller	1	2. Language	13
3. Connecting	2	3. TV System	13
2. Basic Operations.....	3	4. Local Time Setting	14
1. Turning on	3	5. Timer Setting	14
2. Power	3	6. Parental Lock	15
3. Channel Up/Down	3	7. OSD Setting	15
4. Volume Up/Down	3	8. Favorite	16
5. Number Keys	3	9. Other	16
6. Mute	3	6. Tools.....	17
7. Pause	3	1. Tools	17
8. Recall	3	2. Information	17
9. Favorite	3	3. Factory Setting.....	17
10. Audio	3	4. Upgrade By USB	17
11. Information	4	5. Common Interface	17
12. EPG	4	6. USB	18
13. TV/Radio	4	7. Game.....	21
14. Channel List	4	1. Game	21
15. Sleep	5	2. Othello	21
16. Page Up/Down	5	3. Sudoku	21
17. Text	5	8. REC.....	22
18. Subtitle	5	1. REC	22
19. Zoom	5	2. Record Manager	22
20. Menu	5	3. Storage Information	22
21. SAT	5	4. HDD Format	22
22. Exit	5	5. DVR Configuration	23
3. Menu Operations	6	6. Jump	23
1. Menu	6	9. Warranty.....	24
2. Edit Channel.....	6		
2.1 TV Channel List	6		
2.2 -Favorite	6		
2.3 -Lock	6		
2.4 -Skip	7		
2.5 -Move	7		
2.6 -Edit	7		
3. Radio Channel List	8		
4. Delete All	8		
4. Installation	9		
1. Installation	9		
2. Antenna Connection	9		
3. Satellite List	9		
4. Antenna Setup	10		
5. Satellite Search	11		
6. Multi-Satellite Search	11		
7. TP List	12		

1. Front Panel



2. Remote Control



3. Connecting



If your TV is standard definition and does not have component input, please use a 3 lines cable (red, white, yellow) to connect to your STB's CVBS, left and right analog audio port, as well as to your TV's corresponding ports.



If your TV is standard or high definition and has component input ports, you can connect your STB to your TV with a 5 lines cable (red, green, blue/ red, white)



If your TV is high definition and has a HDMI input port, connect your STB to your TV with an HDMI cable. This allows for maximum resolution to be displayed on your television.



Connect your satellite antenna cable to your STB's 'SAT IN' port. Then, turn on your TV and select the appropriate input on your television.

Turn on your STB power, select a satellite in the "Satellite List" menu, and then enter the antenna setup to configure exact parameters of this antenna. Select "Single Satellite Search", then "Auto Scan" to search programs.



1. Turning On

First, turn on the main power by flipping the switch on the back of the device to the 'on' position. When the device is first used, it will either display no channels, or the first channel from the default channel list. If the STB has been set up previously, it will display the last channel before turning off.

2. Power

When the power is switched 'on' on the back of the STB, pressing the power buttons on the front panel and remote control will enter standby mode. In standby, pressing the power button will call back the unit and play the previous channel. Disconnecting the unit will end the standby state.

3. Channel Up/Down

In full screen, press the [Up/Down] buttons to switch between channels.

4. Volume Up/Down

In full screen, press the [Left/Right] buttons to adjust the volume. This controls the volume output of the STB.

5. Number Keys

In full screen, use the [Number] keys on your remote control to input channel number and press the [OK] button to switch.

6. Mute

Press the [Mute] button to mute the sound on it will show up on screen. Press the button again to restore the sound.

7. Pause

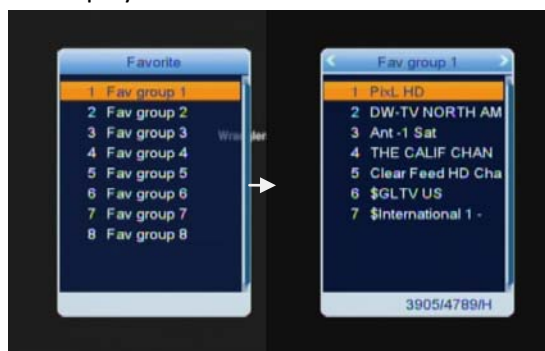
In full screen, press the [Pause] button, and the picture will be paused. The sound on the channel will continue. Pressing the [Pause] button again will resume to the current playing picture.

8. Recall

Pressing the [Recall] button will switch to the previous channel you played.

9. Favorite

In full screen, pressing the [Favorite] key will display a favorite window on the left side of your screen. If you have not set any favorite channels, your screen will display no favorite channels.



In the favorite window, you can move up and down and select a group by using [Up/Down] keys and pressing the [OK] button. Once you select a group, you can scroll through the favorite channels in that group. Press [Left] to select a different group. Hit the [Exit] button to return to full screen. Setting up favorite channels is discussed further.

10. Audio

In full screen, pressing the [Audio] button will open the audio menu. You can modify the audio track by pressing [Up/Down] and the audio mode by pressing [Left/Right]



Mode: Left, Right, Stereo, Mono

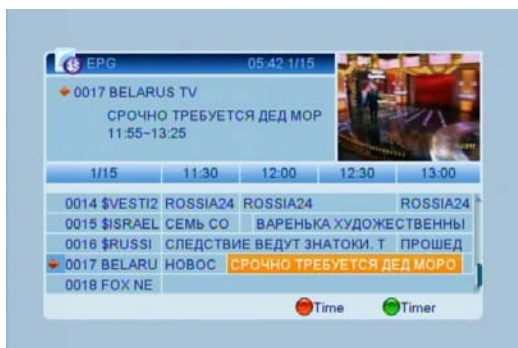
11. Information

In full screen, pressing the [Info] key will open the information window. The window displays parameters of current channel.

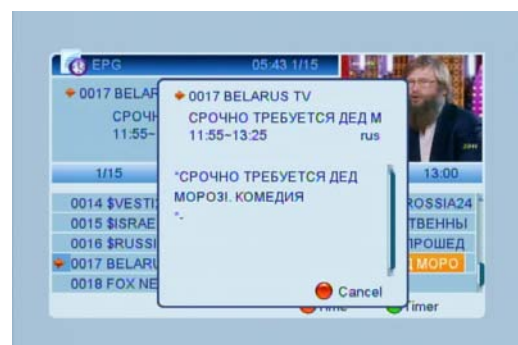


12. EPG

The EPG (Electronic Program guide) helps you navigate channels through all the possible viewing options. It supplies information such as channel listings and starting and ending times for all available channels. Press the [EPG] key to display [EPG] screen.

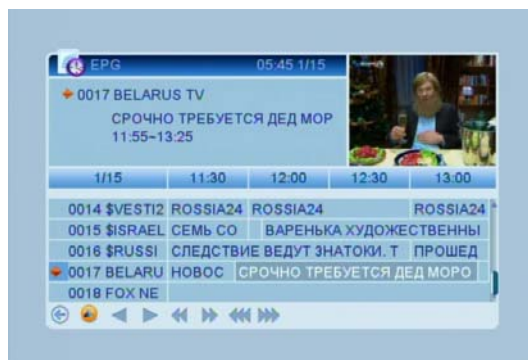


Pressing the [OK] button in each item will display more detailed information. Press the red button to cancel.

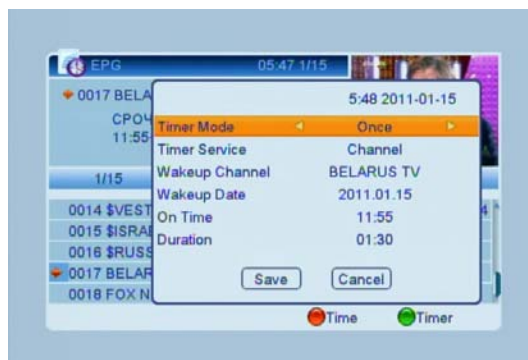


12. EPG Cont.

Pressing the [Red] button in the EPG menu will display the "Time Bar Menu". You can press [Left/Right] to select back/current time/last program or -0:30/next program or +0:30/2:00/+2:00/last day/next day. Press [Up/Down] to change channel.



Pressing the [Green] key in EPG menu will open timer menu. User can set time as desired.



In EPG Menu, press [Exit] to close screen.

13. TV/Radio

In TV mode, pressing the [TV/Radio] button will switch to radio. In radio mode, pressing the button again will bring you back to TV mode.

14. Channel List

In full screen, pressing the [OK] button will bring up the channel list. Press the [Left/Right] keys to change satellite. Press [Up/Down] keys to highlight and select channel by pressing the [OK] button.

15. Sleep

This function can set sleep timer. When you set a sleep timer and the time arrives, the system will enter standby automatically. You can set the sleep timer between off and 10/30/60/90/120 minutes.

16. Page Up/ Down

In “Channel List”, the [Page Up] and [Page Down] keys will skip pages in the list. In full screen, it will change the satellite directly.

17. Text

Press the [Text] key to open the teletext page on a channel. If the channel has no teletext information, it will display no teletext data on the screen.

18. Subtitle

Press the [Subtitle] key in full screen to switch subtitles on/off.

19. Zoom

The [Zoom] key allows you to magnify a certain area on the images. Pressing the [Zoom] key again will enlarge the image 2x, 4x, 6x, 12x, and 16x. Use up/down left/right to pan the image area you want to see. Press the exit key to leave zoom mode.

20. Menu

Pressing the [Menu] key will open the menu, exit the current menu to last menu, or close the window.

21. SAT

Press the [SAT] key in full screen to switch between the preset satellites. You can program the satellites from the menu.

22. Exit

Press the [Exit] key to return to the previous menu or close window.

1. Menu

When you press the [Menu] key, it will enter the menu screen like shown below.



Use the [Up/Down] keys to switch between the menu pages “Edit Channel, Installation, System Setup, Tools, and Game, and Record”. Press [OK] or [Right] to enter “Edit Channel”. If menu lock is on, it will display a dialogue for the user to key in password. The default password is “0000”.

2. Edit Channel

Press the [Up/Down] keys to select menu items among: “TV Channel, Radio Channel, and Delete All”. Press [Left] or [Exit] key to go back to main menu.

2.1. TV Channel List

When you enter the “Channel List” menu, it will display like below.



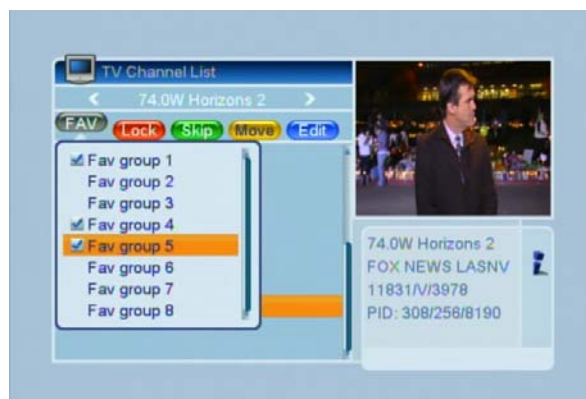
You can move the highlight using [Up/Down] and [OK] to preview current program in side preview window.

2.1. Cont.

You can press [Page Up/Down] to implement the page up and down function. Use [Left/Right] keys to switch “Program Group” You can press [Menu] or [Exit] to go back to “Channel Edit” menu. Color Keys implement corresponding functions in Channel List.

2.2. Favorite

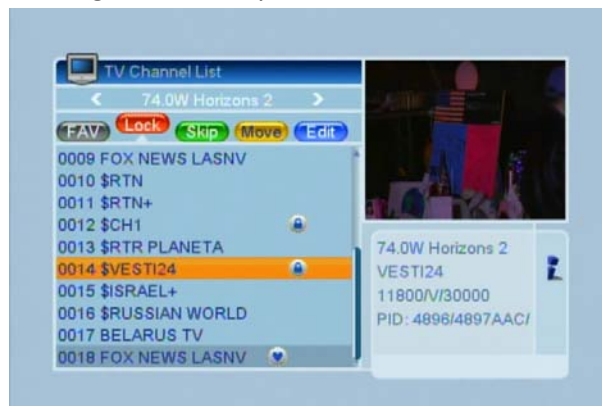
Pressing the [Favorite] key, then [OK] will open up the favorite menu like shown below.



You can highlight between 8 favorite groups by pressing [Up/Down] and [OK] to make a favorite mark on the left side of selected Favorite group. Pressing [OK] again on a marked Favorite group will remove the mark. After marking, press [Exit] to return to Channel List and a favorite mark will show beside the channel.

2.3. Lock

Pressing the [Red] key will enter lock mode.



2.3. Cont.

Use [Up/Down] to move the highlight, and select channel with [OK]. A dialogue will display to enter password. The default password is "0000". If you input the correct password a lock will appear beside the channel. After you save and exit the menu, you will be requested to input password when watching a locked channel.

2.4. Skip

Pressing the [Green] key will enter "Skip" mode.



You can move the highlight using [Up/Down] and [OK] to make a skip mark on the right side of the channel. After you save and exit the menu, the channel will be skipped when change channels in full screen.

2.5. Move

Pressing the [Yellow] key will enter "Move" mode.



Use [Up/Down] to move the highlight and [OK] to select a channel and make a moving mark.

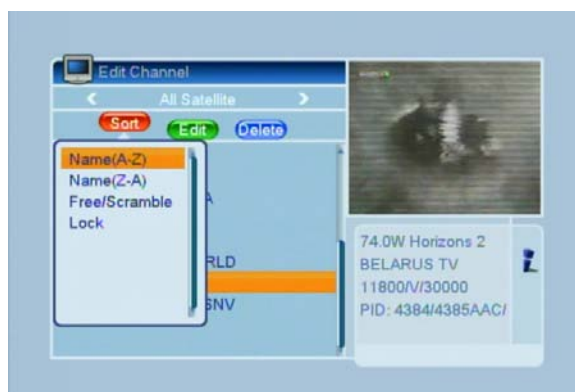
2.5. Cont.

This will allow you to move selected channel to desired position. Press [OK] key to confirm your decision.

2.6. Edit

Pressing the [Blue] key will open "Edit" menu. Pressing [Exit] will exit the "Edit Channel" menu.

Sort:



Pressing the [Red] key will open the sort window like above. There are 4 different ways to sort; Name(A-Z): Alphabetical order, Name(Z-A): Reverse alphabetical order, Free/Scramble: Free channels will appear in the front or sequence and scrambled at the rear, and Lock: Accumulated locked channels in the last of TV Channel List.

Edit:

In the "Edit Channel" menu, press the [Green] key, then use [Up/Down] to move highlight and press [OK] to open rename window. It shows like below.



2.6. Cont.

Pressing the [Red] key will switch capitals on. The [Green] key can delete the character on the cursor. The [Yellow] key will save the operation, and the [Blue] key will cancel the operation.

Delete:

Press the [Blue] key, move the highlight with the [Up/Down] keys, and select with [OK] to make a delete mark on the side of selected channel. After you save and exit the “Edit Channel” menu, the marked channel will be deleted.

3. Radio Channel List

The operation of the “Radio Channel List” is basically the same as the “TV Channel List”, with one point different; Radio has no video information, so it will always display the logo on the upper right preview window.

**4. Delete All**

Press the [OK] key, and it will show a warning message like shown below.

**4. Cont.**

The warning message will inquire you to delete all channels or not. If you select “Yes”, all channels will be deleted. If you select “No”, or press the [Exit] key, you can exit the function without saving.

1. Installation

Use [Up/Down] keys from the menu and select “Installation” with the [OK] or [Right] key. If menu lock is on, it will display a dialogue for the user to enter password. The default password is “0000”.



Use [Up/Down] to select menu items and the [Left] or [Exit] key to return to the main menu.

2. Antenna Connection

When you enter the Antenna Connection menu, it will display like the screen below:



Press [Left/Right] to select LNB option between “Fixed Antenna” and “Motor Antenna.”

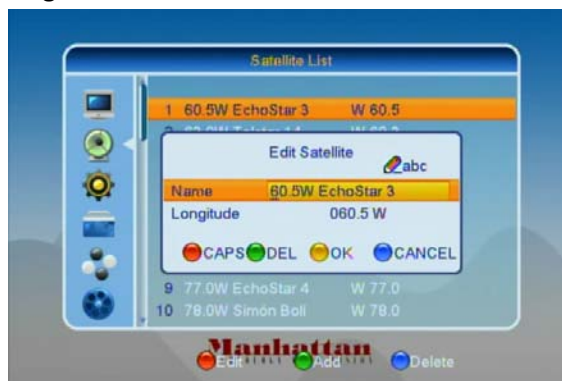
3. Satellite List

When you enter the “Satellite List” menu, it will display like the screen below:



3. Cont.

Press the [Red] key and you will enter the “Edit Satellite” menu. You can edit the satellite name and longitude.



Press the [Green] key and you will enter the “Add Satellite” menu like shown below:



Press the [Yellow] key, and you will be asked “Are you sure to delete?” Select “Yes” to delete the satellite and “No” to cancel the operation.



4. Antenna Setup

Fixed Antenna:

If you select “Fixed Antenna” in “Antenna Connection” menu, it will display like below:



Satellite: In this item, press [Left/Right] keys will switch satellites and [OK] will enter satellite list for you to select directly.

LNB Freq: In this item, pressing [Left/Right] keys will select parameter. Options are: 5150/5750/5950/9750/10000/10050/10450/10600/10700/10750/11250/11300/5150-5750/5750-5150/Universal (9750-10600)

DiSEqC1.0: You can use [Left/Right] keys to switch options between disable/LNB1/LNB2/LNB3/LNB4.

22K: You can use the [Left/Right] keys to switch on and off. When this item is switched on, receiver will receive TV and radio input from 22K port. If item is switched off, receiver will receive information from Ok port.

Motor Antenna:

If you select “Motor Antenna” in “Antenna Connection” menu, it will display like below:



4. Motor Antenna Cont.

LNB Type: 5150/5750/5950/9750/10000/10050/10450/10600/10700/10750/11250/11300/5150-5750/5750-5150/Universal(9750-10600)

Motor Type: DiSEqC1.2/USALS

Local Longitude/Local Latitude: If you select USALS, this option is available. Press [OK] and use [Number] keys to input.

Delete All: This option will delete all satellite positions. It will display an “Are you sure...” dialogue. If you select “Yes”, it will delete all positions. If “No”, you will cancel the operation. This item is only available in “DiSEqC1.2” mode.

Motor Setting: If you select “DiSEqC 1.2”, Local longitude/Latitude is not available. It will show up like the screen below.



Use [Left/Right] keys and [OK] key to change satellite or responder.

Position No.&Save: You can use [Left/Right] or [Number] keys to select input position number.

Go to X: Press [OK] to open list. You can select “go to X” or “go to reference”.

After you select “Satellite” and “Position No.&Save”, you can move the highlight to West/Save/East line and use [Left/Right] to move dish and press [OK] to save the position. Move the highlight to “Recalculation” and press [OK] to recalculate.

Set the satellite’s local longitude/latitude. USALS can move dish automatically. Move the highlight to “Motor Setting” and press [OK] key, it will show the screen like on the following page:

4. Motor Antenna Cont.



Switching satellite can move the dish to the right place.

Limit Setup:



When you set "Limit Setup" to "West Limit/East Limit", you can move the highlight to "Limit Setup" Line and move the dish to east or west by pressing [Left/Right] keys manually. When you are moving the target place, press [OK] key to save the point.

5. Single Satellite Search

When you enter "Single Search" menu, it will display like the screen below:



Satellite: In this item, press [Left/Right] keys to select satellite to scan.

5. Single Satellite Search Cont.

Press the [OK] key otherwise to select directly.

FTA Only: Press [Left/Right] key to scan all channels or scan free channels. If you select "Yes", it will scan free channels only.

Scan Channel: Press [Left/Right] keys to select scan TV + radio channels, or only TV/radio channels.

Network Search: Press [Left/Right] keys to select network search or not. You can only do network scan when you select "Preset Scan".

Scan Mode: You can select "Auto Scan" to blind scan or select "Preset Scan" to scan all preset TP's.

Search: Move highlight to "Search" and press [OK] to start scanning. The next screen will display the process and the current scanning channel.

In the "Single Search" menu, press [Exit] key to draw back from scanning and meanwhile saving the current value.

6. Multi Satellite Search

When you enter the "Multi Search" menu, it will display like the screen below:



Satellite: In this item, press [OK] key to see the selected satellite. The system will use DiSEqC1.0/DiSEqC1.2/USALS function to search satellite and scan channels. It will scan all the satellites displaying in the bottom box.

FTA Only: Press [Left/Right] keys to select "scan all channels" or "scan free channels". If you select "Yes", it will scan free channels only.

Scan Channel: Press [Left/Right] keys to select scan TV + Radio Channels, or just TV/Radio channels.

Network Search: Press [Left/Right] to select network search or not.

6. Multi Satellite Search Cont.

Scan Mode: You can select “Auto Scan” to blind scan or select “Preset Scan” to scan all preset TPs.

Search: Move highlight to “Search” on press [OK] to start scanning.

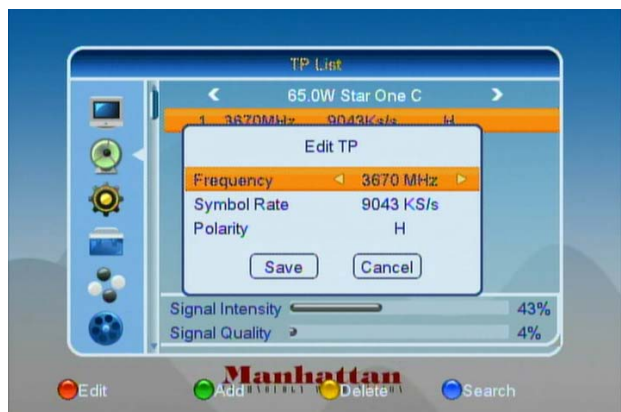
In “Multi Search” menu, press [Exit] key to draw back from scanning while saving the current value.

7. TP List

When you enter to “TP List” menu, it will display like the screen below:



Use the [Left/Right] keys to switch satellite. Press the [Red] key to open “Edit TP” menu. User can edit TP info. Frequency: “3000~13450 MHz”, Symbol Rate: “1000~45000Ks/s”.



Press the [Green] key to open “Add TP” menu. User can add a new TP.

7. TP List Cont.



Pressing the [Yellow] key will open a dialogue asking you to confirm whether to delete current TP. Select “Yes” and you will delete the highlighted channel. Select “No” to cancel the operation.



Pressing the [Blue] key will display a dialogue box. You can select “FTA Only, Scan Channel, Network Search” items, then move highlight to “Yes” button and press [OK] to begin search.



1. System Setup

When you enter "System Setup" menu, the screen will display like below:



Use the [Up/Down] keys to select pages among: "Edit Channel, Installation, System, Tools, Game, and Record". Press [OK] or [Right] key to enter "System Setup". If menu lock is on, it will display a dialogue for the user to enter password. The default password is "0000" Use [Up/Down] keys to select menu items among: "TV Channel, Radio Channel and Delete All." Use [Left] or [Exit] key to go back to main menu.

2. Language

When you enter the "Language" menu, it will display like the screen below:



Language: Use [Left/Right] keys to select menu languages. The selection on languages include: English, Polish, German, Russian, Arabic, Portuguese, Turkish, Spanish, Polish, and Italian.

2. Language Cont.

First Audio: Some channels have more than one audio language for choosing. By this function you can set the audio for this channel. If the playing channel has the same audio as the "First Audio" you set, system will play this audio language by default. If the channel does not have the suited audio language, the system will compare automatically with second audio language.

Second Audio: If the channel has no corresponding audio with "First Audio", but has it for "Second Audio" system will play the second audio language as default. If no audio language corresponds with the "Second Audio", then the default language of the current channel will be played automatically.

Teletext: You can set teletext language. If the streams have this language you will see the teletext in the language you set.

Pressing the [Exit] key will draw back from "Language" menu.

3. TV System

When you enter the "TV System" menu, you will see the screen like below:



Video Resolution: This option is for switching the outputting video resolution. Highlight and use the Left/Right keys to switch video resolution By Source/ By Native/576i/ 576P/720P_50/720P_60/1080i_25/ 1080i_30. This effect is equal to pressing the Size key in full screen. By source means system will set the resolution according to the program it is playing. By Native means the system will be set according to the TV's maximum supported resolution.

3. TV System Cont.

Aspect Mode: This option is for switching the screen aspect ratio mode. The following options are provided: 4:3 PS/4:3 LB/16:9/Auto. You can press the [Left/Right] keys to select each mode. "16:9" will provide a pillar box mode, which means the user uses a 16:9 display but sees a full 4:3 picture. The system will force press wide screen picture to be narrow with black bands on the left and right side. "Auto" will not do any system aspect translation. 4:3 and 16:9 aspects work best on the appropriate displays.

RF System/Channel: These are for the user to set the TV RF modulator output signal VHF/UHF channel and TV system mode. If your TV is too old to support CVBS/YPbPr/HDMI, you can use RF cable to connect STB's TV RF output port to TV Antenna input port.

HDMI Video Out: This is for setting the HDMI video output mode. It has the following options: RGB-Normal, RGB-Expand, YCbCr4:4:4 and YCbYr4:2:2. You can press [Left/Right] keys to select each mode circularly.

Digital Audio Out: This is for setting both the SPDIF and HDMI's digital output mode. It has the options LPCM Out, BS Out, and Auto. You can use the [Left/Right] keys to select each mode. "LPCM Out" means system will decode no matter AC3 or PCM audio track data to be LPCM, digital audio decoder or HDMI TV will get LPCM digital audio data. "BS Out" means system won't do AC3 decode just output AC3 RAW data to SPDIF and HDMI. "Auto" means system will detect which the connected HDMI TV can decode and then output that data. If HDMI TV can decode SC3, system will just output RAW data, if HDMI TV can decode LPCM only, the system will just decode AC3 or LPCM to be LPCM and then output. Press [Exit] to draw back from TV System Menu.

4. Local Time Setting



GMT Usage: This item is used for opening the usage of GMT. You can press the [Left/Right] keys to switch on and off.

GMT Offset: This item is only valid when the setting of "GMT Usage" is on. You can press [Left/Right] keys to switch "GMT Offset" value, with the range -12:00 ~ + 12:00 increase each half hour progressively.

Summer Time: This item only valid when the setting of "GMT Usage" on. When "Summer Time: is on, it will add one hour to the time.

Date/Time: These items are valid only when the setting of GMT Usage is off. You can press the [Left/Right] keys moving the highlight and use the number keys to input directly. If the current channel provides the correct time information, you will see the current time when you enter the "Time" menu. If the channel does not provide time information, you have to input it manually.

Use the [Exit] key to draw back from time menu.

5. Timer Setting

Select "Timer Setting item and press [OK] key to enter "Timer List" menu.



5. Timer Setting Cont.

You can press [Up/Down] keys to select a timer, then the [Enter] key to open timer menu.



Current time information will display on the first column. If the current time is incorrect, please modify the time information in the "Time" item.

Timer Mode: The modes to set the timer include "Off, Once, and Daily."

Wakeup Channel: Press [OK] key to enter channel list and select channel that you want to set.

Wakeup Date: Use the [Number] keys to input your wakeup date.

On Time: Use [Number] keys to input your wakeup time. Once the time is up, no matter what state the system is in, it will automatically switch to the channel you want and start to play.

Duration: After you set a time for "Duration" item, once the time is up, the system will automatically switch to standby mode. If you do not want to work this function, set the duration to 00:00.

Move the highlight to "Save" button and press [OK] key to save timer. Select "Cancel" or press [Exit] key to cancel the operation.

6. Parental Lock

In the "Parental Lock" line, press the [OK] key and a dialogue will ask you to input the password. Default password is "0000". When you input the correct password, you will see a screen like shown:

6. Parental Lock Cont.



Menu Lock: This is for determining that when users wish to enter "Edit Channel/Installation/Tools" menu, whether you have to enter a password or not. If the setting of "Menu Lock" is set "Yes", the user will have to key in the password. If set "No", it will unlock.

Channel Lock: Determines whether the user wishes to play the locked channels by inputting password or not. If the setting is set to "Yes", channels with the lock mark will display a dialogue on the screen and ask for password. If this setting is set to "No", the lock function will be disabled.

New Password: This is used for revising password. You can input the new password in this item by using the [Number] keys. After you fill the 4 digital numbers, the highlight will auto skip to "Confirm Password" and ask you to input the password again. If the password is correct, the screen will display a message of "Saving Data, Please Wait..." After you finish saving and draw back to "System Setup" menu, the revising is complete.

Use the [Exit] key to draw back "Parental Lock" menu.

7. OSD Setting

When you enter "OSD Setting" menu, you will see a screen like on the following page.

7. OSD Setting Cont.



OSD Timeout: When you switch channels in full screen, it will show some information about the current channel on the lower part of the screen. To set the duration of the information that shows on the screen, you can press the [Left/Right] keys to select the time. The range of duration is 1 second ~ 10 seconds.

OSD Transparency: You can press [Left/Right] keys to select the values. There are 5 levels of transparency: No (no transparency function), 10%, 20%, 30%, and 40%.

Press [Exit] key to draw back from the “OSD Setting” menu.

8. Favorite

When you enter the “Favorite” menu, it will display like the screen below:



When you press the [OK] key, you can rename the favorite group's name. It will display a dialogue as shown:

8. Favorite Cont.



Pressing the [Red] key will switch to capital or not. Pressing the [Green] key will delete the character. The [Yellow] key will save the operation. The [Blue] key will cancel the operation.

9. Other



LNB Power: You can set this option to “On” or “Off”. If the setting is set to “On” the receiver will supply power to the satellite antenna. “Off” will not supply power to the antenna.

Channel Play Type: This can set the channel play type. You can set the playing channels as “Free, Scrambled, or All” For example, if you select “Free”, all scrambled channels will be skipped when you change channels by using the [Up/Down] keys.

Press [Exit] key to draw back from “Other” menu.

1. Tools

When you enter the “Tools” menu, it will display like the screen below:



Use the [Up/Down] keys to select “Tools” from the menu page options. Press [OK] or the [Right] key to enter “Tools”. If the menu lock is on, a dialogue will display for user to enter password. The default password is “0000”. Press [Up/Down] to select menu items. Press [Left] or [Exit] key to return to the main menu.

2. Information

When you enter the “Information” menu, you will see the screen like below:



The screen displays the items as “BootLoader, HDCP, MAINCODE, LOGO, DefaultDB, UserDB” information. Press the [Exit] key to draw back from the “Tools” menu.

3. Factory Setting

When you press [OK] key in the “Factory Setting” item, it will show a warning message inquiring you “The operation will load default and erase all the channels that user added. Continue?”

3. Factory Setting Cont.

If you select “Yes”, all the revised parameters of the receiver will reset to the default value. Please use this function carefully. If you select “No” or press [Exit], you can draw back without saving.



4. Upgrade By USB

Open “Upgrade By USB” menu from “Tools” It will display like below:



Upgrade Mode has only 1 option: “All Code”, which means that you can only upgrade the whole file to your STB’s flash. Please rename your new fw file name to be the format “all*.bin”, * means any other string is acceptable, but the initial 3 letters must be “all” and the extension name must be “.bin”. Then press OK key to start upgrade by USB.

5. Common Interface

Pressing [OK] key when you highlight “Common Interface” will enter the CAM card information Menu select as shown:

5. Common Interface Cont.



Use the [Up/Down] keys to select slot 1 or slot 2. Press [OK] key again to enter the card information.



In the CAM card information menu, you can select each item by pressing [Up/Down] keys and [OK] to enter. This information menu format and string is according to CI card itself. So, a different card may have a different menu. Entering "Change CA PIN" can change the pin code of the CA card in this CAM card.

6. USB

USB menu will be automatically shown when you insert U disk to USB port except "Auto scan, Multi Picture, or Upgrade".



6. USB Cont.

USB menu will be disabled when no USB device is plugged. Media Play List will not be saved when USB plug out, stand by, or power off. The USB will display as shown below:



You can preview the picture at the top right corner if the scroll bar is on the picture files (JPG,BMP), and a logo will show when on MP3 files. Move the scroll bar with the [Up/Down] or [Page Up/Down] keys. Go into subdirectory when you press the [OK] key in the file directory, play the selected file when scroll bar is on the file, and you will automatically return to the USB menu after play is over.

Color key operation:

Green key: Put the selected file to play list when you press the [Green] key, meanwhile showing "Add to Play List". This display will disappear after a short duration, and the file will be added into MP3play list if it is one MP3 file, and to image play file for one image file.

Yellow key: All the MP3 files in the current directory are added into MP3 play list by [Yellow key], and screen will display "Add to Play List". Display will disappear after a short duration.

Blue key: All the image files in current directory are added into image play list by [Blue] key, and screen will display "Add to Play List". The display will disappear after a short duration.

6. USB Cont.

Red key: One operation window will show: “please select play list”. You can select Music or Image play by [Left/Right] keys, and open the selected play list by pressing the [OK] key. If there is no file, it will display “This type of play list does not exist”

Music play operation:

If you select music, and MP3 play list menu is activated, it will display like below:



Red key: Play the first music file by pressing the Red key. Play the file selected with scroll bar with [OK].

Green key: Change play mode with [Green] key. Play mode includes: Sequential, Random, Single repeat, All repeat.

Yellow key: Delete the selected file with [Yellow] key.

Blue key: Delete all the files with [Blue] key. A dialogue will display asking “Are you sure to save?” before the operation. If you select “Yes”, all files will be deleted and the play list window will close.



6. USB Cont.



After you begin to play MP3, it will show the MP3 info like pictured above. Press the [Pause] key to pause. Press the [Play] key to play current track.. Press the [Stop] key to stop and return time to 00:00. Press the [Previous] button once to skip to beginning of track, or twice to skip to previous track. Press the [Next] key to go to next file. Press the [Forward] key to go forward 20 seconds. Press the [Back] key to go back. Jump to beginning or end if there is less than 20 seconds to the beginning or end of the music file. Return to USB list when play is over or press the [Exit] key.

Image view operation:

If the image view function is selected, a menu will display like shown below:



Red key: Image browsing starts after you press the [Red] button, or play selected image with [OK] key. You will return after view is over or press [Exit] key.

6. USB Cont.

Yellow key: Delete selected image with the [Yellow] key

Blue key: Pressing the [Blue] key will delete all the image files in play list. The system will display a dialogue to remind you “Are you sure?” before the operation. If you select “Yes” all files will be deleted. “No” will cancel the operation.

Red Key: The key will open setup menu like below:



Use the [Up/Down] keys to move the scroll bar, and [Left/Right] keys to switch options.

Size: Real: Show the real size if the image is less than full screen size.

Full: Full screen display. Full is default.

Time: 0 ~ 10 seconds. 2 seconds is default.

Move the scroll bar to the “Save” icon and press [OK] to save. Select [Exit] and [OK] to exit without saving.



When in slideshow, press [Left/Right] to go to previous/next image.

1. Game

When you enter the “Game” menu, you will see two games like below:



The two games you can play include Othello and Sudoku.

2. Othello



Move highlight onto “Setup” and use [Left/Right] keys to select the game level difficulty. Move highlight to “Start” and press [OK] key to start the game. Move highlight to “cancel” and press [OK] to draw back from the game. Use the [Left/Right] and [Up/Down] keys to guide the chessman. Press [OK] to set chessman. Press the [Exit] key to quit game.

3. Sudoku



Select “New Game” with the highlight and press [OK] to begin. Use the [Exit] key to return to option select. Highlight and select “Solve” to show answers for the current puzzle. You can set the difficulty by selecting “Setup” and using the [Left/Right] or [OK] key to switch between 3 classes. Select “Cancel” or use the [OK] key to quit game.

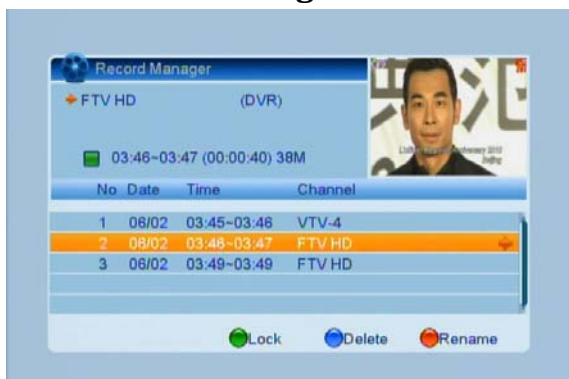
1. REC

When you enter the “REC” menu, it will display like the screen below:



Use the [Up/Down] keys to select “REC” from the menu pages. Press [OK] or [Right] key to enter “REC”. If menu lock is on, a dialogue will display for user to key in password. The default password is “0000”. Use the [Up/Down] and [OK] keys to select menu items. Press [Left] or [Exit] key to go back to main menu.

2. Record Manager

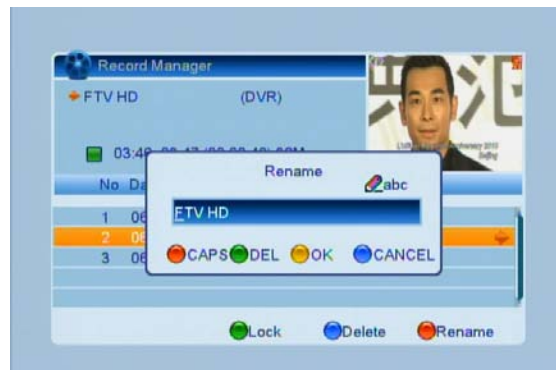


Lock: Press the [Green] key to lock a program on HDD. If you want to cancel lock, press the [Green] key again. You will be asked to enter password. Once you enter the correct password, it will cancel the lock feature for the program.

Delete: Press the [Blue] key to make a delete mark next to the highlighted program. If you want to cancel the delete operation, press the [Blue] key again. When you exit “Record Manager” menu, the delete mark will be deleted automatically.

2. Record Manager Cont.

Rename:



Press the [Red] key to rename the highlighted program. It will display a “Rename” window. You can press the [Red] key again to switch to capital letters. The [Blue] key will delete character. [Yellow] key will save the operation. [Blue] key will cancel the modification.

3. Storage Information

Move the highlight to “Storage Information” and press the [OK] key. It will display “Storage Information” like shown below:



4. HDD Format

Press the [Yellow] key under “Storage Information” to open “Format” window. Use the [Left/Right] keys to select disk mode and select “OK” to format. Select “Cancel” or press the [Exit] key to cancel the operation.

4. HDD Format Cont.

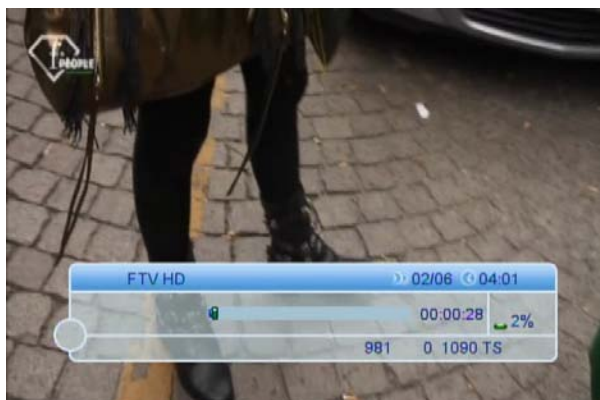


5. DVR Configuration

Move the highlight to “DVR Configuration” and press [OK] key. It will display as shown below:



Use the Left/Right keys to switch timeshift “On/Off”. If timeshift is set “On”, it will timeshift the program when the user watches TV. Press [Info] key to see timeshift OSD like shown below:



5. DVR Configuration Cont.

You can use [Left/Right] keys to move the slide. You cannot exceed the current time. Press [OK] key to play from the current point selected. You can also use the [Pause] and [Previous/Next] keys. Time Shifting is only available when USB HDD is connected to system and read/write speed is high enough.



Press the [Stop] key the first time to end the playing mode. Pressing [Stop] a second time will stop the recording.

6. Jump

Move the highlight to “Jump” and press the [OK] key. It will display “Jump” as shown below:



Use the [Left/Right] keys to switch the jump time. The options are 30s, 1m, 5, 10m, and 30m. When you play the recorded program, use the [Previous/Next] keys to jump programs.

Warranty

Manhattan-digital warrants this product Manhattan RS-1933 satellite receiver. Free from defects in workmanship and materials for 1 year for the date of the original purchase. During the warranty period, Manhattan-digital will provide free of charge both parts and labor to correct defects in the workmanship and material,

This warranty does not cover damage due to lightning, power surges, fire, flood, or other acts of God. Warranty does not cover abnormal conditions, improper use, improper installation or any modification done to its hardware and software. Warranty is void if any repair is done without proper authority or by an authorized service center by Manhattan-digital.

Manhattan-digital liability under this warranty is limited to servicing of Manhattan RS-1933 satellite receiver, if returned to a Manhattan-digital's authorized service center under a Return Authorization number given by service center. Freight must be prepaid in compliance with repair warranty.

Manhattan-digital authorized service center is;

Grandview Satellite

3859 E. Grandview Rd.

Phoenix, AZ 85032

twitulski@cox.net

twitulski@manhattan-digital.net



Manufactured under license from Dolby Laboratories. Dolby and the double-D symbol are trademarks of Dolby Laboratories.

Notes: