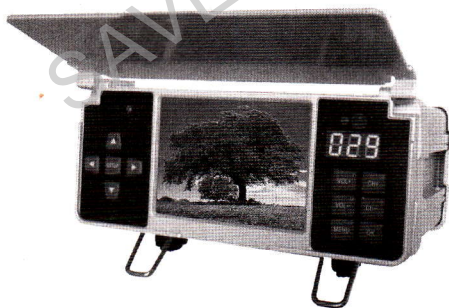


Multi-Function Satellite Finder

Use of a manual



Introduction

Thanks for your purchasing Satellite finder. the Satellite finder with world advanced technology: QPSK demodulator and MPEG- II decoder in full compliance with the DVB-S standards, with newest integrated circuit and TFT, TFD, liquid crystal display technology production; machines Targeting a high-performance, high-capacity lithium-polymer battery, the Satellite finder is a collection of satellite television signal and AV signal reception, high resolution LCD display and with DC power supply directly one of the high-tech electronic products. With aluminum metal, can be carried and used outdoors. It is the absolutely necessarily for engineers during their installation of the satellite television reception systems and monitoring equipment system

To ensure the best use of unit, and long-term normal use, please read this handbook carefully beforehand.

ATTENTION:

- There is no user-adjustable components, Do not remove the rear panel of this product, only qualified technical personnel are permitted to perform maintenance.
- Do not let the child within put anything into the unit, to avoid damage to machinery.
- Don't expose this product to directly sunlight, heat or humid conditions.
- Keep away from strong light while using this product so as to obtain the clearest and the most colorful picture and normal long-term use.
- Avoid heavy impact or drop onto the ground although our machine with incabloc equipment,
- Do not use chemical solutions to clean this unit, Please simply wipe with a clean soft cloth to keep the brightness of the surface.
- Only use the power adapter attached when you charge.
- Turn off this unit before you plug LNB cable
- Using and safekeeping for the remote control:

For use remote control, the interval of press two keys need beyond one second to assure the veracity of every operation.

Keep the remote control far from hot and moisture places, and avoid impact.

Do not expose the remote control to intense lamp-house such as direct sunshine or light.

Please try again after change the battery if the remote control not working.

Please take out the battery if no use the remote control for long time, or it will damage the remote control for leak by the battery.

CATALOG

1. FEATURE	2
1.1 Front panel	2
1.2 Rear panel	2
1.3 Remote control	3
2. System connection	4
3. Basic operation	4
3.1 Power optional	4
3.2 To receive satellite television signals	5
3.3 Adjust image station	7
4. For satellite operators	7
4.1 Determine the azimuth and elevation antenna	7
4.2 To catch satellite signals	7
4.3 Fine adjustment	8
5. Receive audio and video signal	8
6. Menu Operation	8
6.1 Main menu	8
6.2 TV channel list	8
6.3 Radio channel list	8
6.4 Programs setup	9
6.5 Add new program	9
6.6 Edit LNB frequency	9
6.7 Parameter setup	9
6.8 Edit program	9
6.9 Delete program	10
6.10 Move program	10
6.11 Set favorite program	10
6.12 Information of channel	10
6.13 Menu language	10
6.14 System setup	11
6.15 TV system	11
6.16 Default value	11
6.17 Satellite guide	11
6.18 Software upgrade	11
6.19 OSD setting	12
6.20 Games	12
7. The main parameters	13
8. Packing list	13
9. The solution of the small trouble	13

1.Appearance

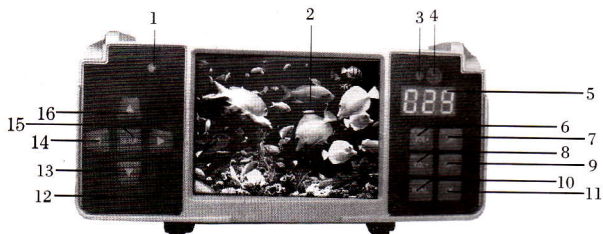


Figure 1

1.1, the front panel (Figure 1)

- 1, power light: the light is red when power is connected.
- 2, LCD display: show images and other signals .
- 3, signal light:the light is green when signal is strong.
- 4, infrared ray receiver window:receive remote control signal.
- 5, the digital display window: show the decibel value & other information from satellite signals.
- 6, VOL +: to turn up the volume or move the cursor right.
- 7, CH +: to turn up the channel or move the cursor up.
- 8, VOL -: to turn down the volume or move the cursor left.
- 9, CH -: to turn down the channel or move the cursor down.
- 10, MENU: press this key to enter or exit the menu.
- 11, OK: confirm key.
- 12, ► :volume key to adjust “+” .
- 13, ▼ : move cursor “down” .
- 14, ◀ :volume key to adjust “-” .
- 15, SETUP: to enter or exit the setup.
- 16, ▲ : move cursor “up” .

1.2, rear panel (Figure 2)

- 1, LNB IN: the satellite signal input socket.
- 2, SIMPLE UPDATE SOCKET: software update socket(note:Only suitable for the same style)
- 3, VIDEO: Video of output/input.

- 4, AUDIO: input/output left/right-channel audio.
- 5, Speaker: speaker output port
- 6, power switch: "0" turn off the unit; "I" search the satellite signal, in this state with A/V output; "II" for A / V signal Receive, with A/V input state;
- 7, DC: direct power supply (DC8.5 V) input jack.

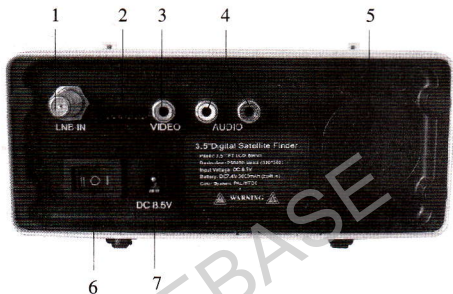


Figure 2

1.3, remote control (Figure 3)

- 1, Power: Power, standby switch (short-term standby status is, if not longer use the machine, it is proposed to the local switch installed in "0" file, to ensure that the use of battery time).
- 2, Mute: Mute Key.
- 3, 0-9: Number Key.
- 4, NINE.P: Nine-picture browse
- 5, Audio: Stereo / left or right audio select
- 6, TV / RADIO: TV/Radio switch Key
- 7, EDITOR: Edit program list
- 8, Game: Into game
- 9, INFO: Program information
- 10, CH+ : Channel up or cursor up
- 11, PAUSE: Pause key
- 12, VOL- : Volume down or cursor left

- 13, OK: Confirm key
- 14, VOL+: Volume up or cursors right
- 15, Exit: Exit menu
- 16, CH-: Channel down or cursor down
- 17, Menu: Call menu or close menu
- 18, P / N: NTSC /PAL transform key
- 19, EXCHANGE: Program Swap
- 20, P +: Up page
- 21, CALENDER: Press this key to display calendar
- 22, A: Empty
- 23, P -: Down Page

2.the system connecting map (Figure 4)

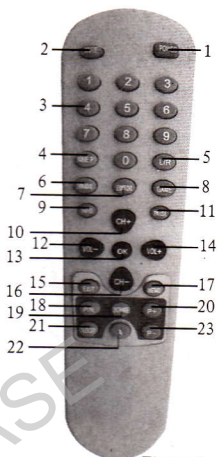


Figure 3

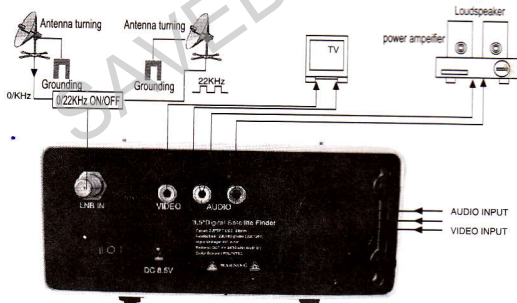


Figure 4

3. operation instruction

3.1.power supply

Built-in battery pack power supply: Internal 7.4 V 3000mAh high-performance lithium polymer battery. Turn on power switch, the battery auto supply, the battery can work more than 2 hours outdoor.

An external power adaptor: Please use power adaptor we supply, connect the power DC8.5V at the rear panel to charge.

Charge for Built-in rechargeable battery pack: The battery with intelligent protection circuit to avoid the damage by over-recharge/over-discharge or short-circuit. Please recharge the battery with the attached power adaptor, when the power light is red. (Suggestion: to charge the battery over 8-10 hours before use the unit. The battery can achieve best function after recharge /discharge 2-3 times.) .

3.2, receive satellite television signals

Satellite TV signal parameters can be adjusted through the 6 buttons on left side of the front panel or remote control

Start: turn the power in the state "I" , the LCD display will show the information and the TV signals.

When the first time to use the Satellite Finder, it will play the first channel as the factory default setting.

If it isn't the first time to use the Satellite Finder, it will play the channel which played the last time before you turn Satellite Finder off.

STAND-BY: 1. under the status of power on, press "power" key on the remote control can make the Satellite Finder in the stand-by mode.

2. Under the status of Stand-by, press "power" key again will wake the Satellite Finder up, and will continue play the channel the satellite Finder in the stand-by mode.

3. You can cut the power of the Satellite Finder to cancel the stand-by function.

Frequently problems: I have turned my Satellite Finder on and not in stand-by mode, there is no program played but displayed a small ball or NO SIGNAL on the screen.

It means you received that channel no signal, which may caused by follow reasons:

1. You choose the channel not on the satellite which your antenna has been chosen, the simple solution is to change channel.

2. If the signal quality is too bad, you can change to other channel which has good signal quality. If you cannot solve this problem at last, please contact with the nearby agency or other professional man.

3. You used the twin-local frequency LNB, you need modified local frequency setting of the Satellite Finder.

OK KEY:No menu displayed on the screen,press"OK"key,the channel list and small picture will displayed on the TV screen.This small picture used for fast search the channels you have stored in the satellite Finder.It convenient for browse and choose. Press P+,10 channels will page down,press P-, 10 channels will page up.

VOLUME:When picture diaplayed in full screen,press CH+,CH- to adjust volume of the Satellite Finder .

NUMBER:When picture diaplayed in full screen,press 0-9 number key to choose the channel you want,then press OK key,change to that channel faster.

MUTE:1.Press MUTE key to shut the voice,the mute logo diaplays on the TV screen at the same time.

2.Under the mute status,press MUTE key again to recover the volume.

PAUSE:1.Press **PAUSE** key when the program in progress,the picture will pause,but the voice continues.

2.Under the pause status,press PAUSE key again.The picture will skip to the time you press the key and the voice continues.

EXCHANGE:Press this key can return to the channel which last time changed.

L/R:1. When picture displayed in full screen,press L/R key,fig 5,will be displayed on the screen to change audio mode.

2.CH+,CH- are use for move cursor up or down,Use VOL+, VOL- to change.

3.Audio PID only for display,cannot change or modify.

INFO:Press INFO key when picture diplayed in full screen,the information window will appear on the screen to show some information about current channel.

TV/RADIO:Under TV mode,press TV/RADIO key can switch to radio mode;The same as switch to TV mode.

CHANNEL LIST:1.Press OK key when picture diplayed in full screen will enter in CHANNEL

LIST status,the details can refer to the CHANNEL LIST in follow chapter.

2.Press OK key under CHANNEL LIST status can return to full screen display.

NINE PICTURE:Press NINE.P key when picture displayed in full screen, fig 6 will appear on the screen.

1.Under NINE PICTURE status, TV screen will display nine channels preview picture (static) from current channel, but the channel which cursor appoint to can



Figure 5

play normally.

2. Use CH+, CH-, VOL+, VOL- key move cursor within the nine channels and the channel which cursor appoint can play normally.

3. When cursor on the channel you want to watch, you can press OK key choose this channel and enter into full screen status.



Figure 6

P+/P-: After have set favorite channels, press P+/P- to choose those channels directly.

3.3 Adjust image parameters

With the five buttons on the left front panel to adjust image. Press "SETUP" enter the menu in Figure 7:



Figure 7

Brightness: adjust the black-level of images to what you want.

Contrast: adjust the degree of discrepancy of the image

Color Tone: adjust level and the color tone (the picture reddish or green)

Color aberration: adjust imbalances in the color images.

OSD: adjust time which show menu on the screen

Language: choose the following language from menu you want: Chinese English
the items need to adjust by "▲" / "▼", the selected option in red background, adjust by "◀" / "▶" to meet your request, press "SETUP" to confirm.

4, adjust satellite signal

4.1 antenna's azimuth and elevation

If you do not know the azimuth and elevation satellite to receive, please check the guidance software of this unit, to calculate antenna azimuth and elevation. Please refer to specific operational guidance 6.17.

4.2 to catch satellite signals

On the front panel of the "MENU" button menu and select channel information, the screen shows in Figure 8, you can also press "INFO" button from remote control into this menu. In Figure 8 Signal quality, the digital displays have been receiving the satellite signal to the decibel value, with PXX show. It can be read in strong light conditions or adjust with removed.

4.3 Exact debugging

The Satellite Finder not receive digital programs only if you adjust the antenna up to the value of signal qualital not less than 30% and it is steady, following that exact adjust the installation altitude of tuner to get the best focal diatanc.Continue to adjust the azimuth up to the MAX value of signal strong degree and signal quality.

5.Receive Audio and Video signal

Turn the power in the state" II ",the LCD will show blue screen ,AV Jack of rear panel can receive audio and video singal ,can be used for monitoring equipment installation and AV singal of broadcast.

6.the main menu operation:

6.1 Main menu:

Press MENU key to see fig.9 on the TV screen.

- 1.Use CH+, CH- can move cursor in different item and the one selected will be highlighted.
- 2.Press OK key can enter into every item and operate.

6.2 TV CHANNEL LIST

Select TV CHANNEL LIST, fig.10 will appear on the screen.(It is the same as last chapter mentioned that press OK key when picture displayed in full screen can entered the CHANNELLIST.)

- 1.Press CH+, CH- can move cursor up or down. The preview window will play the channel*s program which cursor selected.
- 2.Press VOL+, VOL- can page-up or page-down the CHANNEL LIST.
- 3.Press OK or MENU or EXIT can make the picture return to full screen.

6.3 RADIO CHANNEL LIST

Operation for RADIO CHANNEL LIST is almost the same as TV CHANNEL LIST, the different is only in RADIO CHANNEL LIST, the preview window no program play but displayed the welcome picture.

Frequency problem: I deleted the whole channels by careless, what can I do?

There are two ways to solve this problem:



Figure 8



Figure 9



Figure 10

1. Search channels once again in ADD NEW PROGRAM item.
2. Use DEFAULT VALUE function to recover in SYSTEM SETUP item.

6.4 PROGRAM SETUP

You can see fig.11 when select PROGRAM SETUP. IN this item.

1. Press CH+, CH- to move cursor.
2. Press OK key confirm and operate.

6.5 ADD PROGRAM

Input local freq., down freq., polarity, symbol rate, DiSEqC, 22K, 12V, mode, press OK can search programs in one transponder as shown in fig.12

1. Press VOL+, VOL- to move cursor.
2. Press number 0-9 to set local freq., down freq., symbol rate, or press CH+, CH- to change.
3. Press CH+, CH- to change polarity, DiSEqC, 22K, mode.

4. Press OK to start searching.
5. Press MENU or EXIT to exit.

6.6 SET LNB FREQ.

1. Press VOL+, VOL- to move cursor.
2. Press 0-9 number key input parameter; or press CH+, CH- to change.
3. Press MENU or EXIT to exit. (Fig 13)

6.7 PARAMETER SETUP

This item can modify the parameter or transponder and PID etc.

1. Press VOL+, VOL- to move cursor.
2. Press 0-9 number key input local freq., down freq., symbol rate, video PID, audio PID, clock PID or press CH+, CH- to change.
3. Press CH+, CH- to change polarity, DiSEqC, 22K, 12V.
4. Press MENU or EXIT to exit. (fig 14)

6.8 EDIT PROGRAM

You can see fig.15 when select EDIT PROGRAM. In this item:

1. Press CH+, CH- to move cursor.



Figure 11



Figure 12

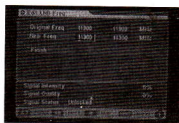


Figure 13



Figure 14

2. Press OK key confirm and operate.

6.9 DELETE PROGRAM

1. Press CH+, CH- to move cursor, you can preview the selected program by preview window at the same time.

2. Press OK to mark the program you want delete, press again to delete.

3. Press VOL+, VOL- page up or down the program list.

4. Press MENU or EXIT to exit. (fig 16)

6.10 MOVE PROGRAM

1. Press CH+, CH- to move cursor, you can preview the selected program by preview window at the same time.

2. Press OK to mark the program you want to move. Press CH+, CH- to move that program and press OK to confirm move.

3. Press MENU or EXIT to exit. (fig 17)

6.11 SET FAVORITE PROGRAM

1. Press CH+, CH- to move cursor, you can preview the selected program by preview window at the same time.

2. Press OK to mark the program you want set to favorite program, press again to cancel the mark.

3. Press VOL+, VOL- page up or down the program list.

4. Press MENU or EXIT to exit. (fig 18)

6.12 INFORMATION

Select INFORMATION, the fig.19 will be displayed on the screen.

6.13 LANGUAGE

Select LANGUAGE to see the fig.20 displayed on the screen.

1. Press CH+, CH- to move cursor.



Figure 15



Figure 16



Figure 17



Figure 18



Figure 19

2. Press OK key to select one kind of language.
3. Press MENU or EXIT to exit.

6.14 SYSTEM SETUP

Select SYSTEM SETUP to see fig.21 display on the screen.

1. Press CH+, CH- to move cursor.
2. Press OK select one submenu.
3. Press MENU or EXIT to exit.

6.15 TV SYSTEM

Select TV SYETEM will see fig.22.

1. Press CH+, CH- to change TV mode.
2. Press MENU or EXIT to exit.

6.16 DEFAULT VALUE

Select DEFAULT VALUE, fig.23 will display on the screen.

Select DEFAULT VALUE, one dialog box "This operation will erase all the programs user added continue?" will appear on the screen. Choose CONFIRM to restore factory default or choose CANCEL to cancel this operation.

6.17 SATELLITE GUIDE

Select SATELLITE GUIDE, fig.24 will display on the screen.

1. Press CH+, CH- to move cursor.
2. Press 0-9 number key input local longitude, local latitude, satellite longitude or press CH+, CH- to change number.
3. Then press OK to calculate the antenna's azimuth and elevation automatically.
4. Press MENU or EXIT to exit.

6.18 SOFTWARE UPGRADE

Select SOFTWARE UPGRADE, fig.25 will display on the screen.

1. Press CH+, CH- to switch upgrade mode, upgrade mode include channel list, programme, LOGO and all.



Figure 20



Figure 21



Figure 22

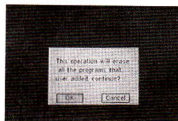


Figure 23

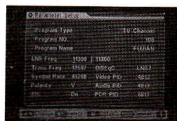


Figure 24

2. Press OK key to start upgrade.
3. Press MENU or EXIT to exit.



Figure 25

6.19 OSD SETUP

Select OSD SETUP, fig.26 will display on the screen.

1. Press CH+, CH- to move cursor.
2. Press CH+, CH- to change setup, there are 6 kinds of menu color style.
3. There are 8 level of transparency totally.
4. Press MENU or EXIT to exit.



Figure 26



Figure 27

6.20 GAME

Select GAME, fig.27 will display on the screen.

1. When cursor stop on the START, press OK to play games.
2. When cursor stop on the DIFFICULTY, press VOL+, VOL- to change.
3. Press VOL+, VOL- can adjust the square left or right after game start. press CH+ circunvolve the square, press CH- can speedup the square dwon. Press OK to pause, press again to continue.
4. If the game in progress, press MENU or EXIT will appear one dialog box "Do you really want to quit this game?" choose OK to exit the game.
5. Press MENU or EXIT to exit game menu.

7, the main parameters

Display screen	TFT 3.5" 230400 pixels	Battery	DC7.4V 3000mAh
A/V output	Audio RCA left/right/stereo channel	Input impedance	75 (F style)
Input frequency	950~2150MHZ	Input signal level	-65 ~-25dBm
Symbol Rate	2~45MbaudsMCPC,SCPC compatible	EB/O Threshold	4.1dB
Demodulation	QPSK	Input voltage	DC8.5V
Video decode	ISO/IEC 13818-ZMP @ML NTSC/PAL	size	165x125x80mm
Audio decode	ISO/IEC 13818-3Layer1 & 2	Weight	780g(with battery)

8, PACKING LIST

- Satellite Finder 1 piece
- DC8.5V, 1500mA power adapter 1 piece
- Use of a manual 1 copy
- Remote control 1 piece
- Bag(optional) 1 piece

9, THE SOLUTION OF THE SMALL TROUBLE

Problems	Reasons	Solution
No picture and sound after the power is on	1. Check power adaptor 8.5V output or connection 2.battery is lack of power	1. Check power input 2.take charge of battery.
"No satellite signal"displayed, when you changed channel	Antenna installation error	Readjusting antenna
	Not connected with LNB input	Connect LNB well
	Launch station is closed	Confirm signal exist and try again
	Over strong of interference	Try again after a while
	Polarized error	Reselect LNB polarized in the polarized control
No picture in the TV Screen	The cable connection with TV is error	Reconnection refer to system connection
	TV was not be set in video	Set the TV to video station
Compounding with noise and radio	Be used to using single audio on something satellite and the other audio is used to using in radio	Select left audio output