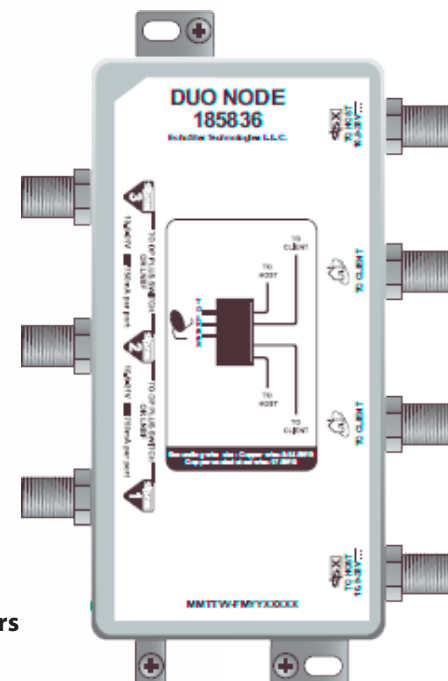
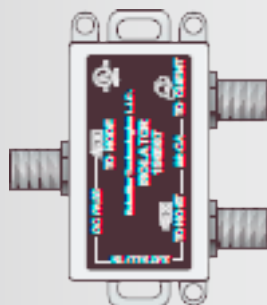
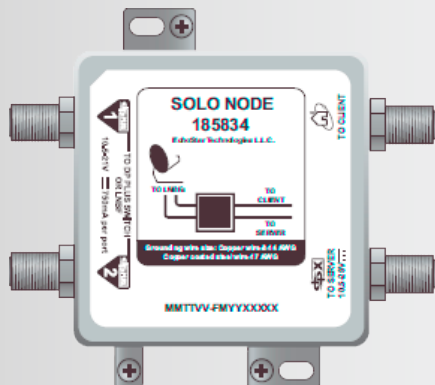
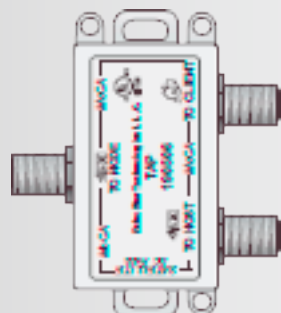
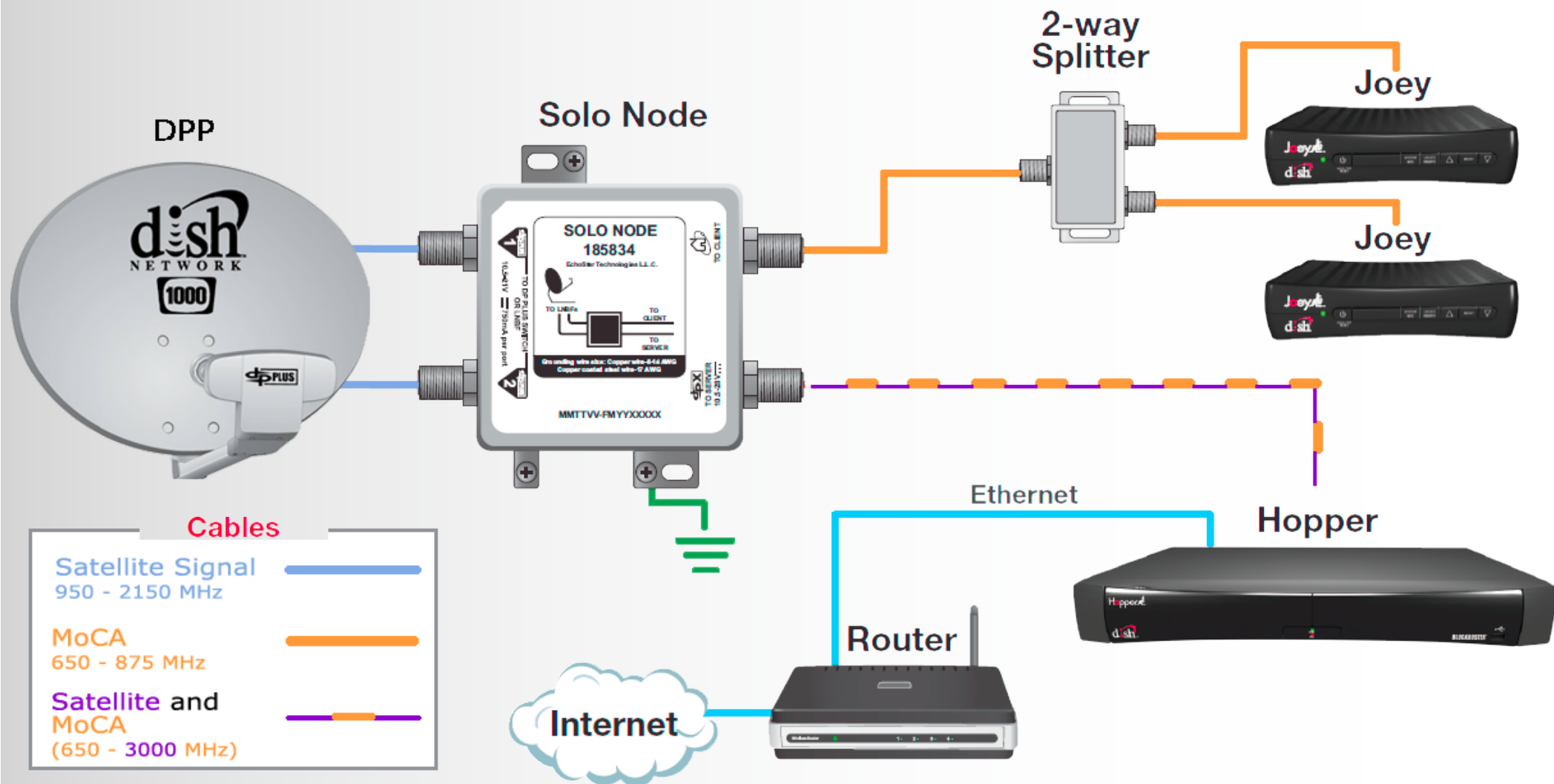
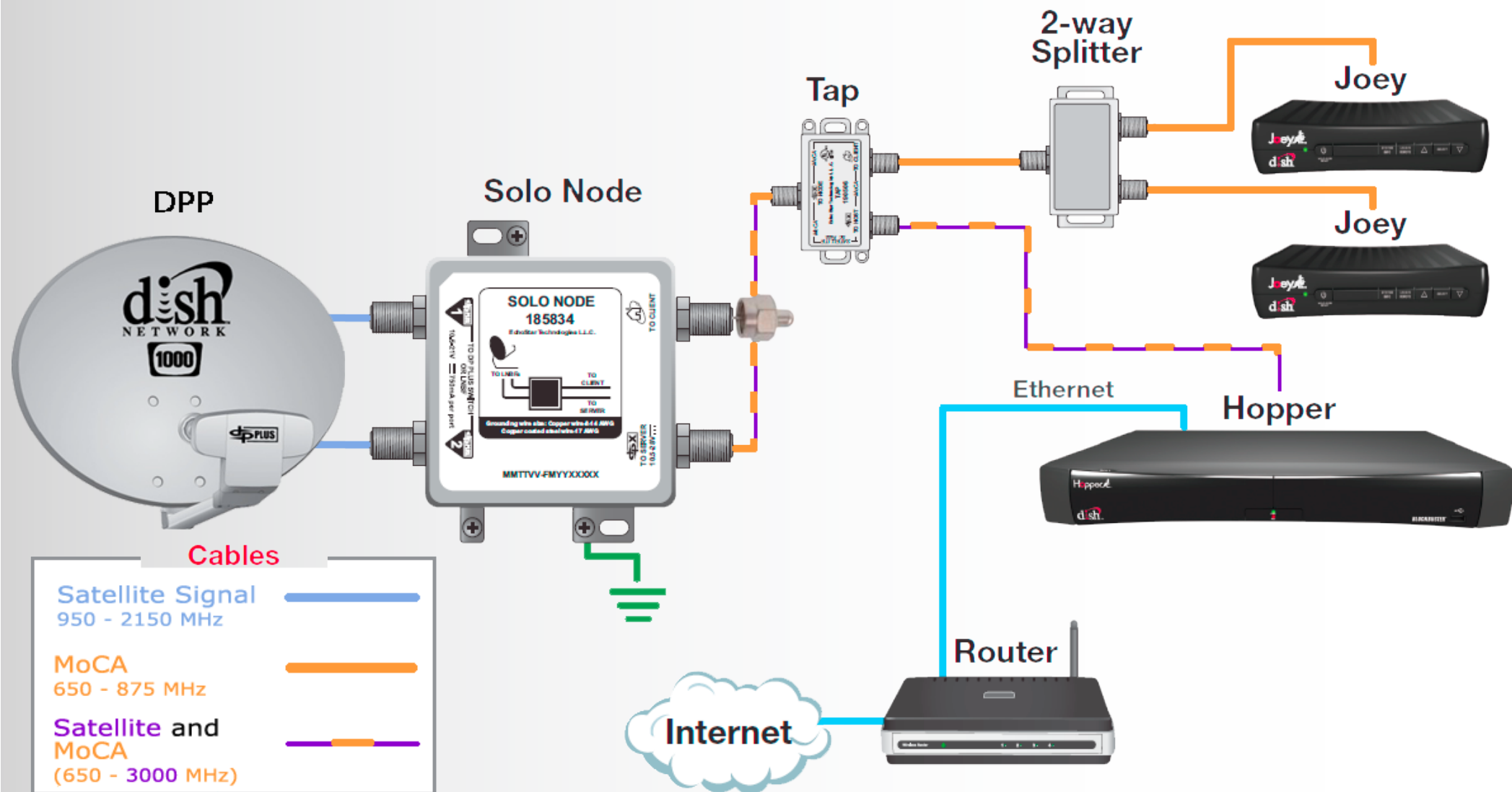


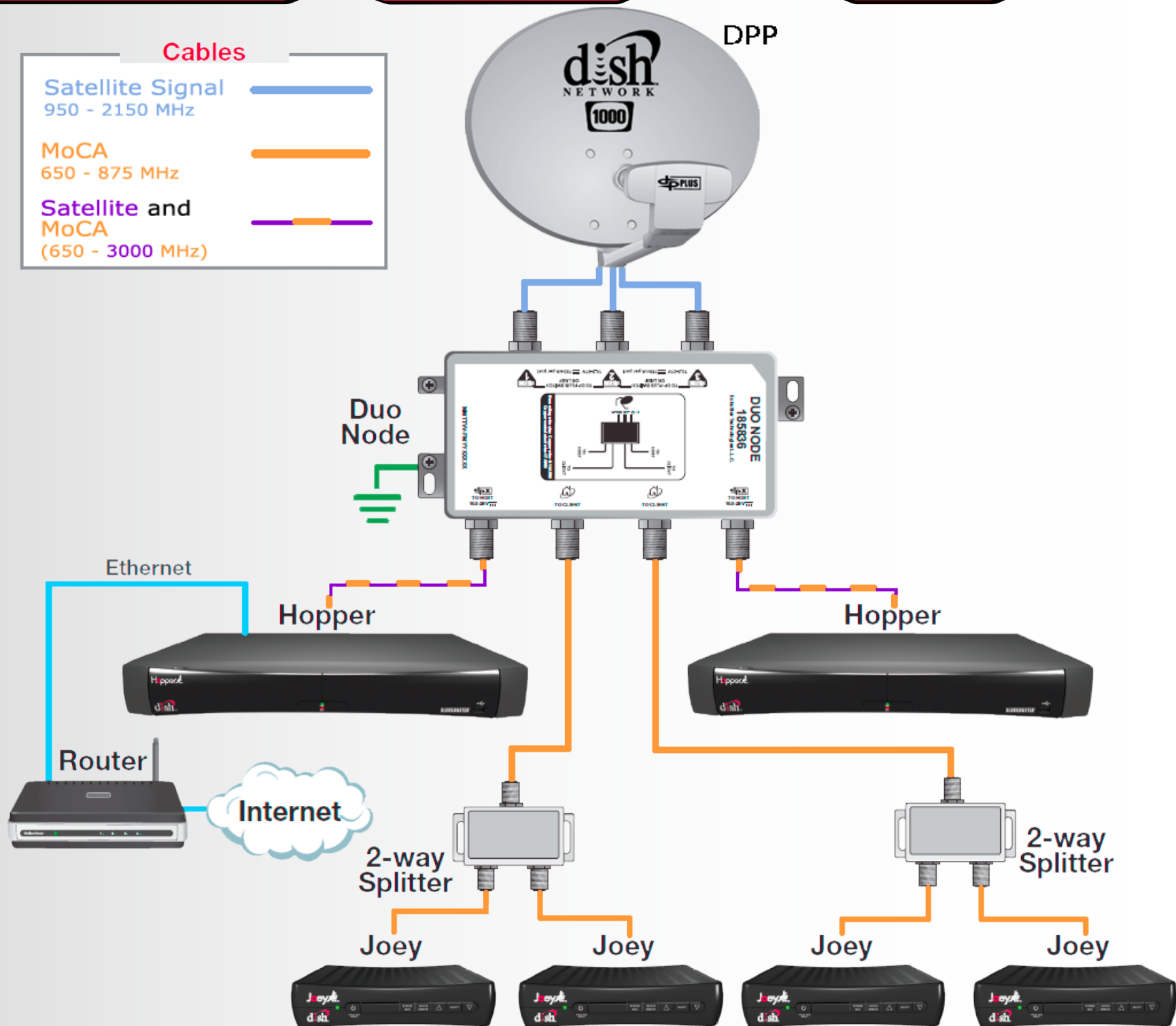
Installation Rules

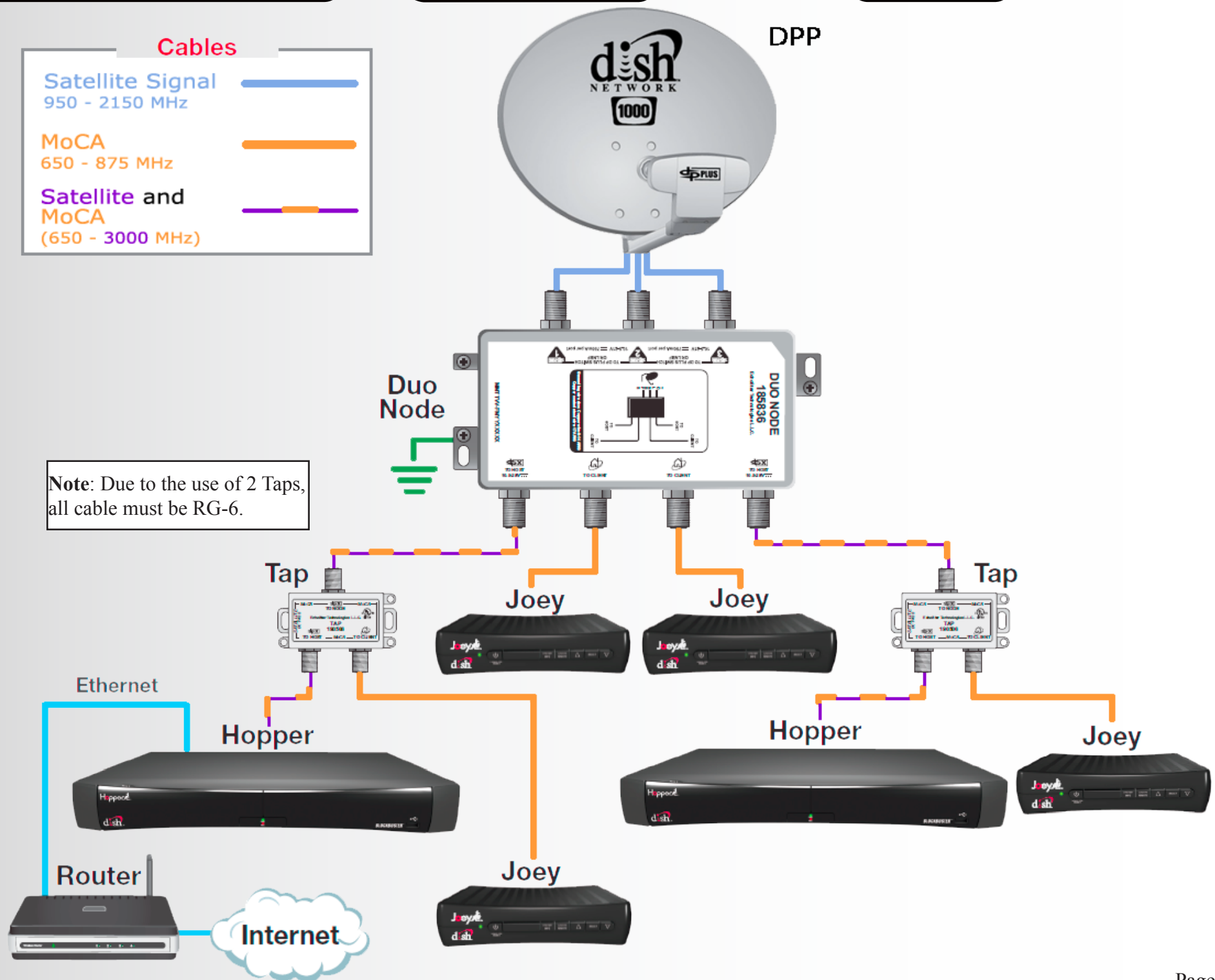
- 1) Nodes must be connected to a DPP LNBF or DPP switch
- 2) Do not install any non-Hopper Joey System components after the Node
- 3) Only 2 components can be between any 2 Hopper Joey System receivers
 - Nodes and 75 Ohm Terminators do not count for this restriction
 - Minimize number of devices for the installation
- 4) Maximum 200-foot cable length from LNBF to farthest Hopper
- 5) Maximum 200-foot cable length between any Hopper and Joey
- 6) Host lines must use RG-6 coaxial cable
- 7) Client lines can use either RG-59 or RG-6 coaxial cable
- 8) Taps can only be installed on host lines
- 9) When using 2 Taps, the entire Hopper Joey System must use RG-6 coaxial cable
- 10) Isolators must be used in pairs
- 11) All unused ports must be capped with 75 Ohm Terminators
- 12) When using a power inserter, it must be installed before the Node
 - Connect ports 2 - 4 on the switch to the Node and port 1 to the power inserter
- 13) Always install, download, and activate the Hopper before plugging in any Joey receivers









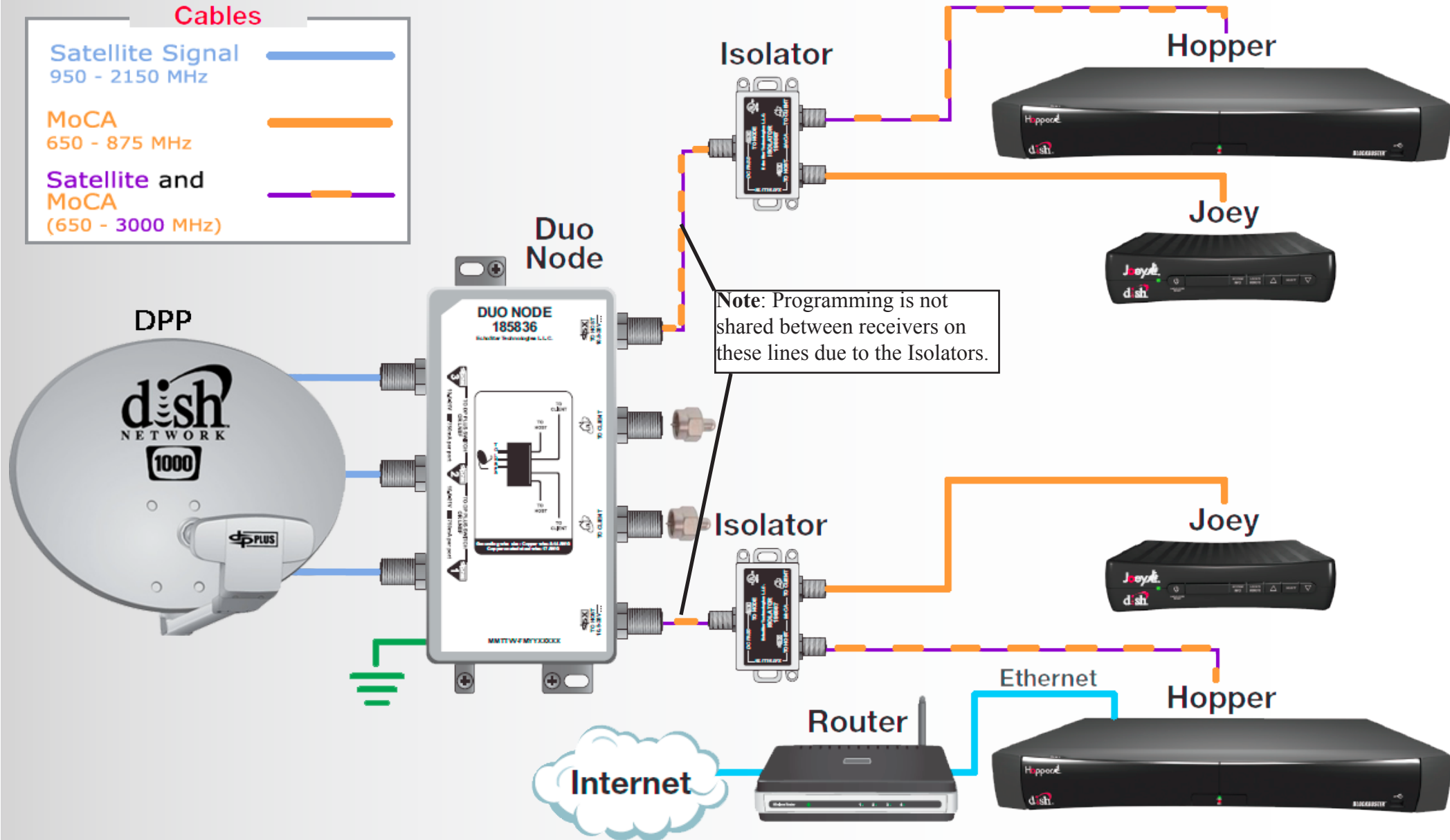


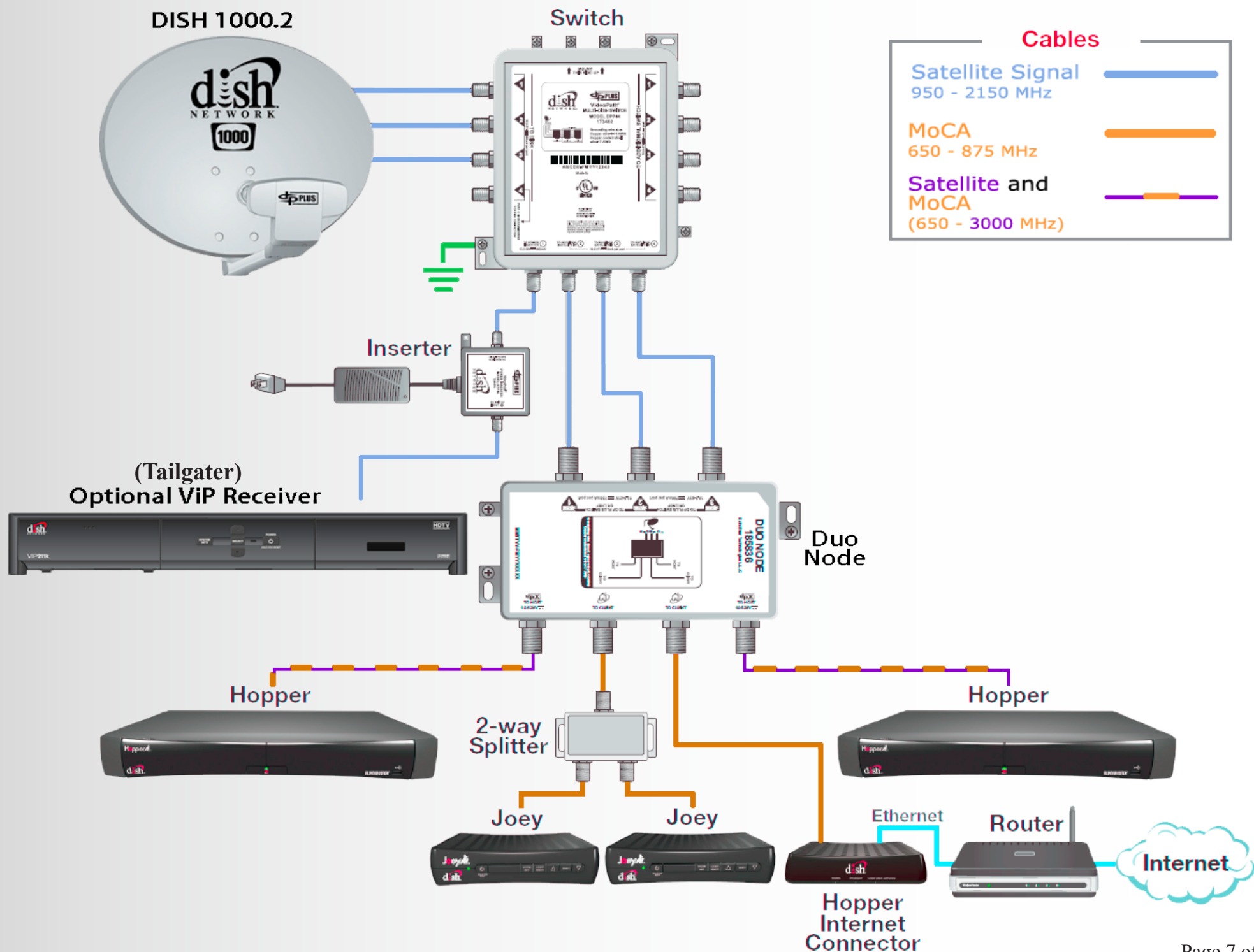
Cables

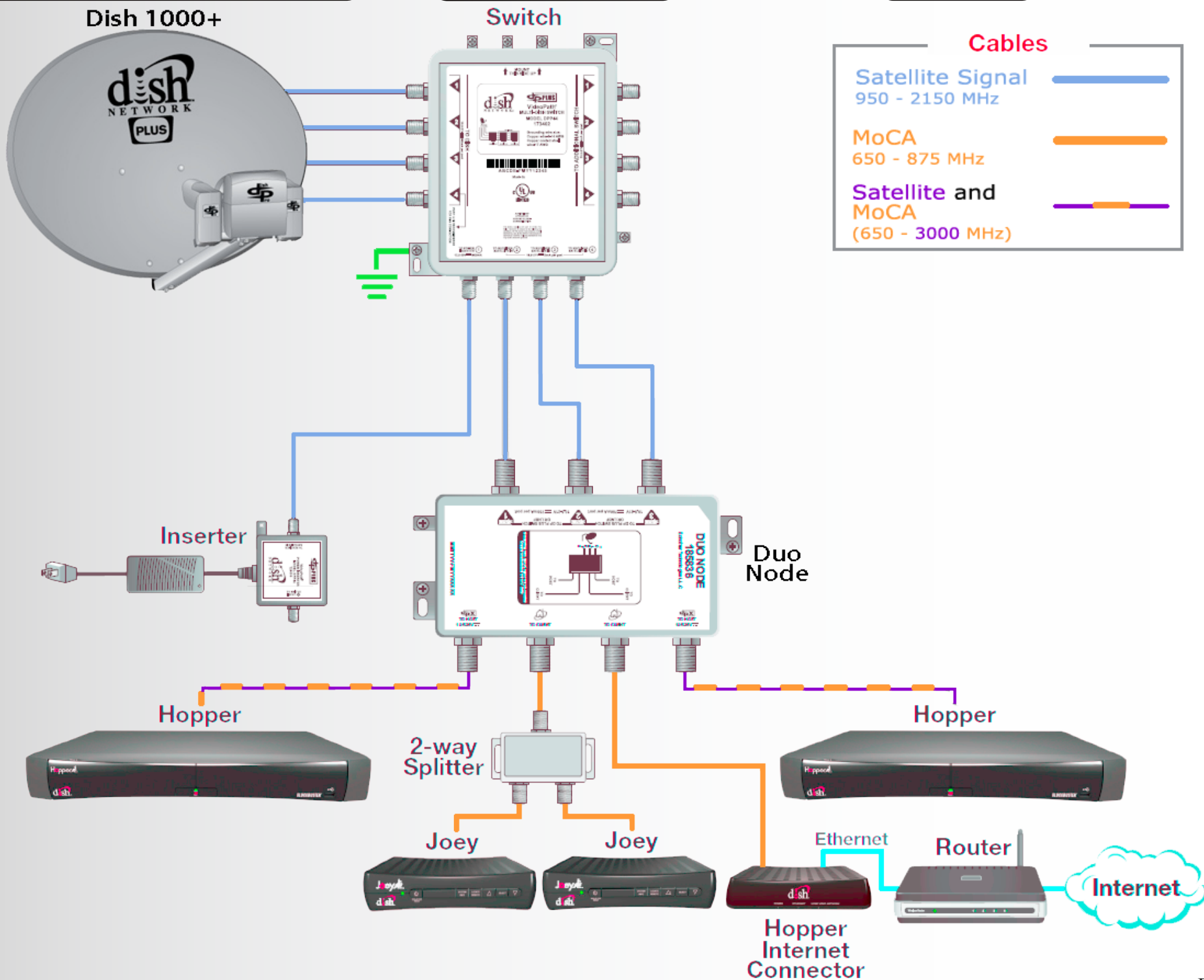
Satellite Signal
950 - 2150 MHz

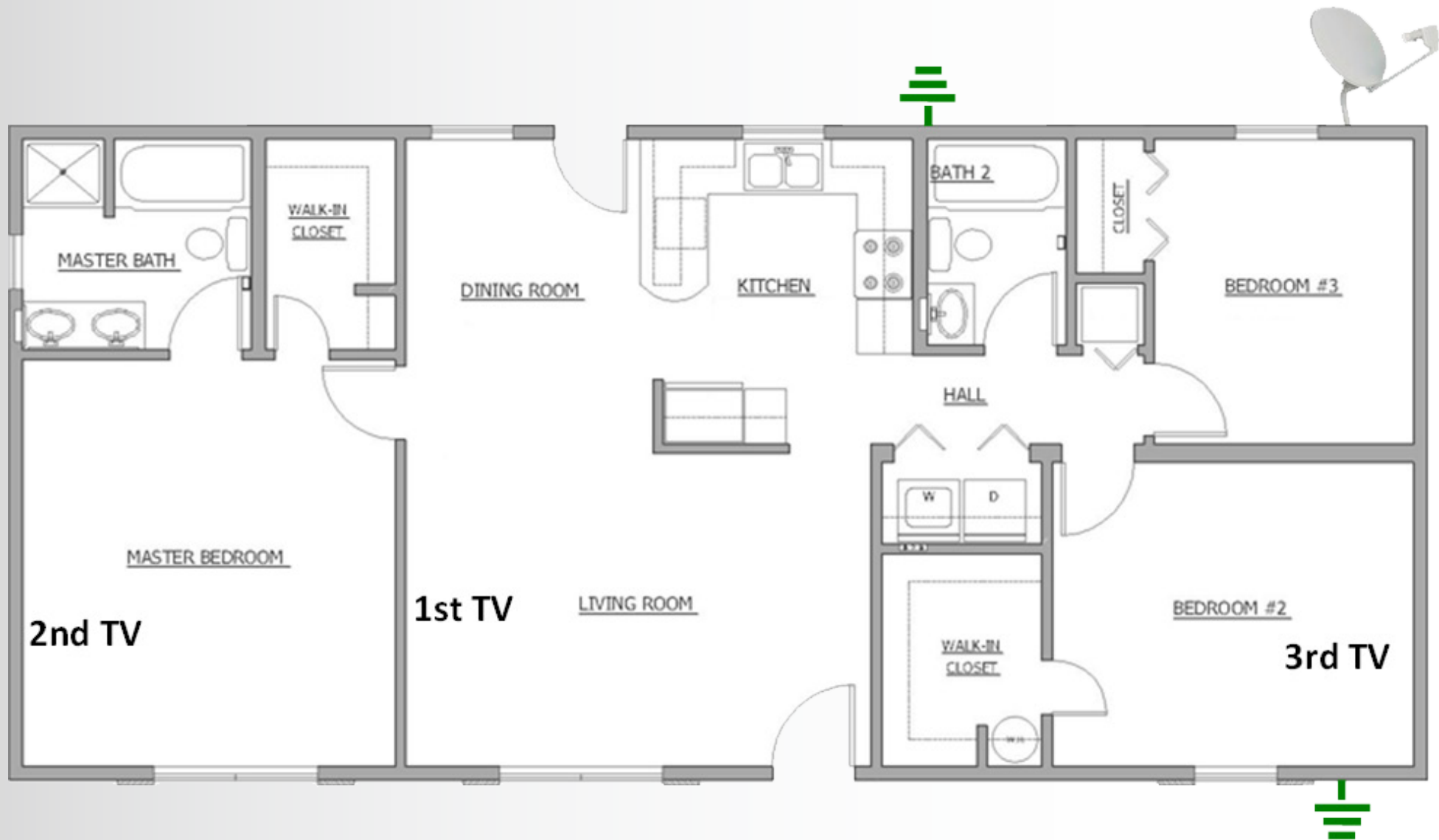
MoCA
650 - 875 MHz

Satellite and
MoCA
(650 - 3000 MHz)

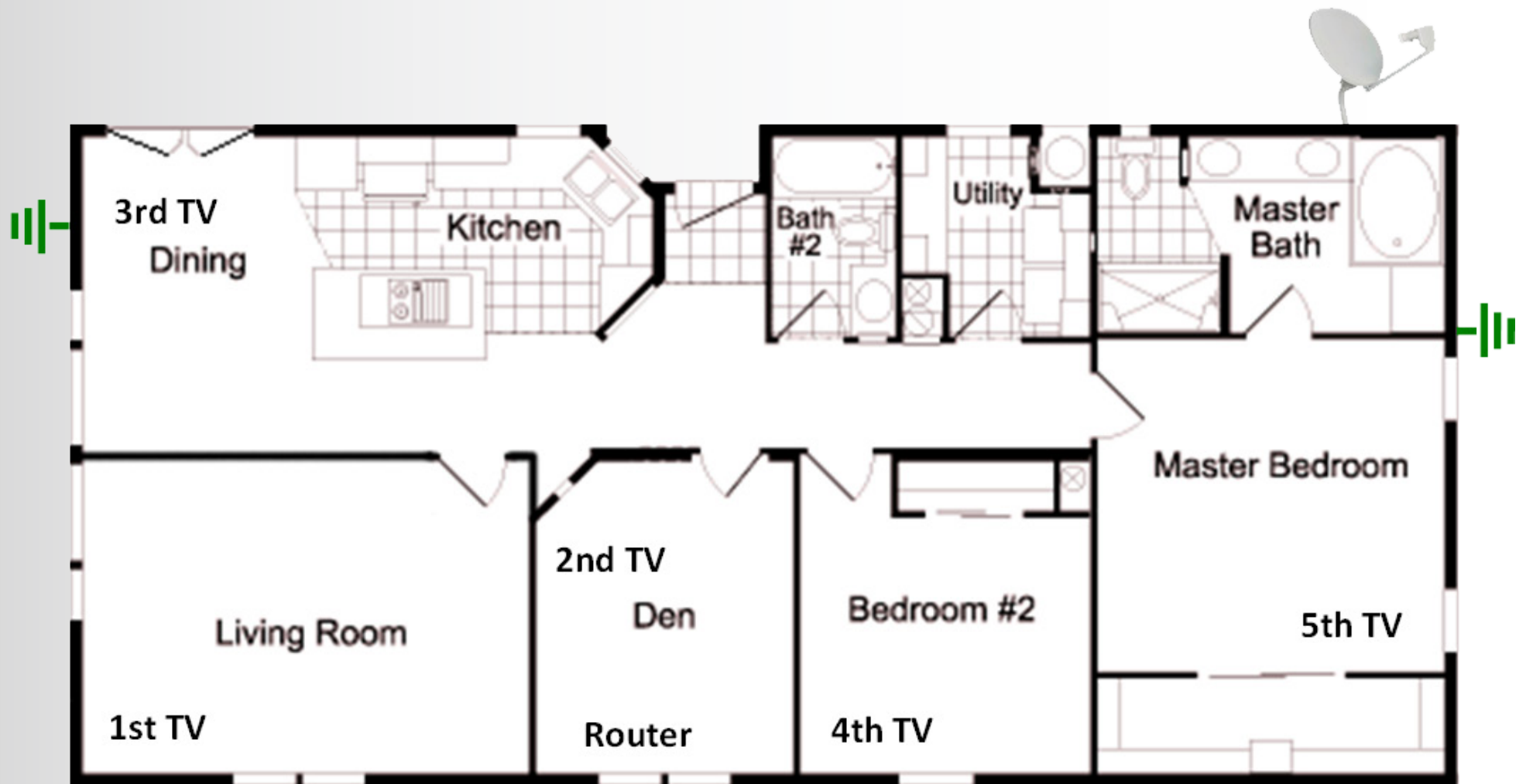












Node

- Manages communication between host and client devices
- Requires Dish Pro Plus satellite inputs
- Nodes can also be used to ground the system

Isolator

- Creates separate home video networks in a two-Hopper installation
- Must be used in pairs

Tap

- Makes it possible to use a single cable to feed multiple devices
- It does this by separating a single host cable into a client line and a host line

Splitters can be used to feed multiple devices off a single client line.

When any ports are left unused in the Hopper Joey System, they must be capped with a 75 Ohm terminator.

Standard professional installation rules always apply, but Hopper Joey installations have a new set of rules.

We must follow them to ensure the system works properly.

