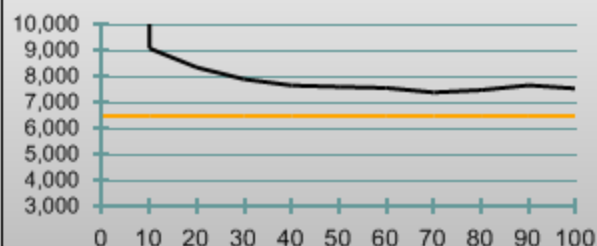
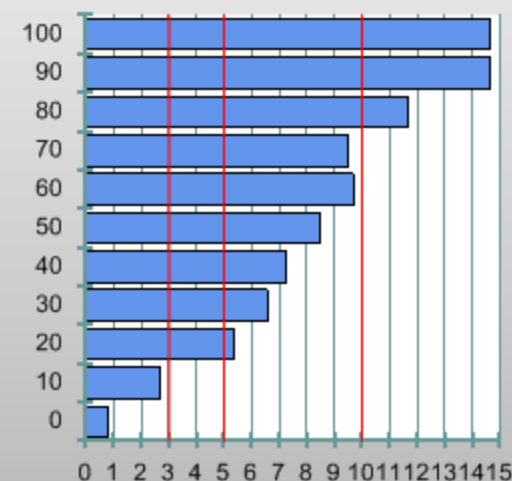




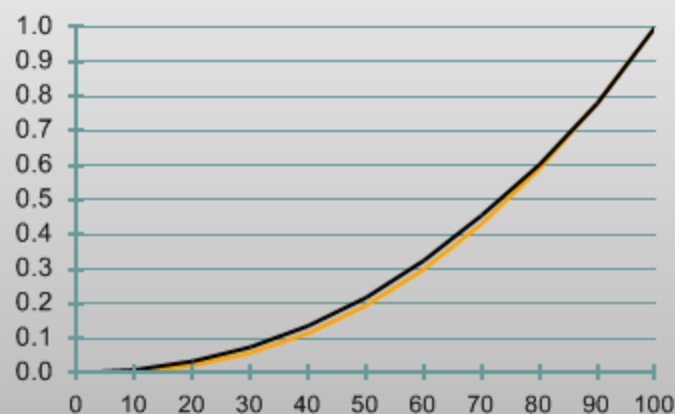
Correlated Color Temperature



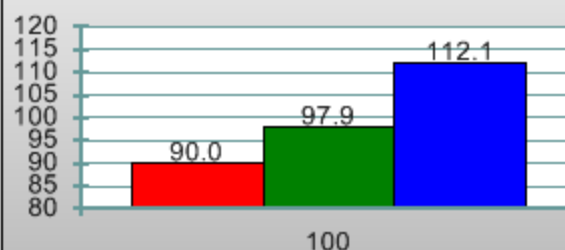
DeltaE



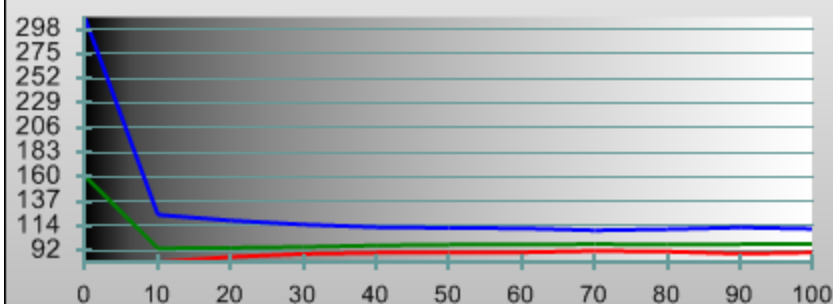
Luminance Y



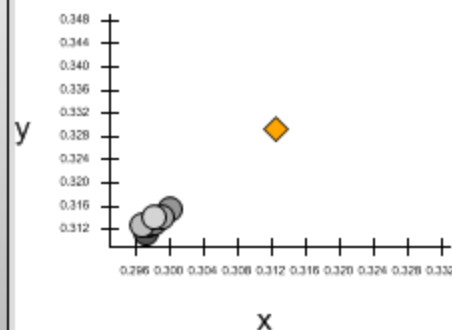
RGB Color Balance



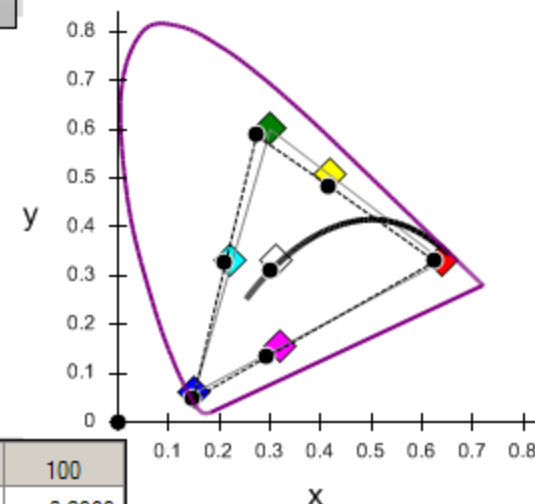
RGB Level Tracking



Grayscale Scatter



CIE Gamut



fL	0	10	20	30	40	50	60	70	80	90	100
x	0.0957	0.2847	0.2910	0.2952	0.2973	0.2977	0.2982	0.3002	0.2992	0.2968	0.2983
y	0.2236	0.2969	0.3026	0.3072	0.3113	0.3126	0.3131	0.3154	0.3140	0.3127	0.3141
Y	0.0161	0.3615	1.2846	2.8181	5.1118	8.1505	12.1454	17.0109	22.4790	29.0849	37.2779
fL	75%W	Red	Green	Blue	Cyan	Magenta	Yellow	100W			
x	0.3007	0.6252	0.2730	0.1482	0.2119	0.2939	0.4177	0			
y	0.3111	0.3294	0.5870	0.0477	0.3265	0.1342	0.4831	0			
Y	25.2026	5.6772	17.5808	1.3502	17.9305	6.7575	23.4420	0			

Display Type: MODE\_LCD\_DIRECT  
 Make: Insignia  
 Model: ?  
 Input: HDMI 1080p HD  
 Insignia LCD.cdf  
 Viewing Distance: 50 - 81

Meter: x-rite CalMANv3 Enhanced Chroma5  
 Source: Optical player or video generator (manual control)  
 White Point: D65, HD Rec709