



IDEAL FOR
HD STREAMING
UP TO 200Mbps¹

WALL-TO-WALL NETWORKING

Create a network using your home's existing electrical wiring²

HD AUDIO AND VIDEO

Stream HD video and enjoy intense online gaming throughout your home²

INTERNET ACCESS FOR ETHERNET-ENABLED DEVICES

Enable Web access to computers, game consoles, and HD media players

EXPERIENCE DIGITAL UTOPIA

EXPERIENCE DIGITAL ENTERTAINMENT

- + Uses your home's existing electrical wiring²
- + Stream HD media content across your network
- + Up to 200Mbps¹ throughput
- + Connect computers, game consoles, and multimedia devices to the Internet
- + Plugs into existing power outlets²
- + QoS support helps prioritize Internet traffic
- + Extend your wireless LAN by connecting an access point to achieve stronger wireless signals in remote areas
- + Supports enhanced network security
- + Simple Plug-and-Play installation
- + Power saving mode
- + Simple push-button security

media lounge™
Entertainment Network

WHAT THIS PRODUCT DOES

The D-Link® PowerLine HD Ethernet Adapter (DHP-302) and Starter Kit (DHP-303) take advantage of your home's existing electrical wiring to create or extend a network². Turn every power outlet into a possible network connection to connect computers, digital media players, and game consoles throughout your home².

USE EXISTING WIRING TO CREATE A HOME NETWORK

The D-Link PowerLine HD Ethernet Adapter is an ideal solution for connecting computers, HD media players, game consoles, and network attached storage devices to your home network.

CONVENIENTLY CONNECT

Connect multiple devices in the farthest corners of your home by attaching a switch or wireless access point to a D-Link PowerLine HD Ethernet Adapter². Plus, D-Link PowerLine HD Ethernet Adapters implement 3DES encryption for securing your connection to help keep your data safe from intruders.

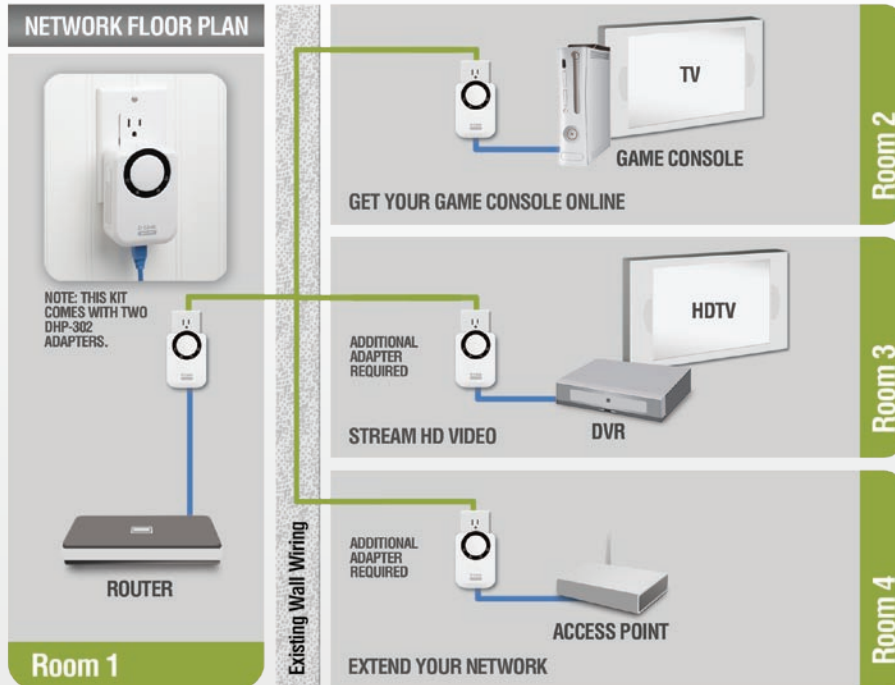
With hassle-free plug & play installation, the D-Link PowerLine HD Ethernet Adapter (DHP-302) and Starter Kit (DHP-303) are an ideal solution to create a wall-to-wall home network.

THE ULTIMATE IN MULTIMEDIA STREAMING

The D-Link Powerline HD Ethernet Adapter is ideal for connecting an Ethernet-enabled digital media device such as a Tivo® or Slingbox® to your network and the Internet. D-Link PowerLine HD Ethernet Adapters also enable you to connect gaming consoles like the Xbox 360®, PlayStation® 3, or Nintendo Wii™ to the Internet. To top it all off, QoS support helps prioritize your data, enabling smooth video streaming and lag-free gaming.

POWERLINE HD NETWORK ADAPTER and STARTER KIT

DHP-302/DHP-303



A minimum of two D-Link PowerLine HD Ethernet Adapters are required to create a network. D-Link PowerLine HD Ethernet Adapters (DHP-302, DHP-303) may coexist, but are not compatible or interoperable, with D-Link HomePlug AV Ethernet Adapters (DHP-304, DHP-305).

Online Gaming

D-Link PowerLine HD Ethernet Adapters enable you to connect gaming consoles like the Xbox 360®, PlayStation® 3, and Nintendo Wii™ to the Internet. The built-in Quality of Service (QoS) feature enables lag-free gaming.

Audio/Video Streaming

Ideal when streaming and recording media, D-Link PowerLine HD Ethernet Adapters can connect Ethernet-enabled digital media devices such as Tivo® or Slingbox® to your network and the Internet. The built-in QoS feature enables smooth video streaming.

Extend Your Network

Connect a D-Link PowerLine HD Ethernet Adapter to a wireless access point to extend your network to the farthest corners of your home². You can also expand your network by attaching a switch or hub to a D-Link PowerLine HD Ethernet Adapter and enable a high-speed Ethernet connection to multiple devices in a single room.

EXPERIENCE DIGITAL UTOPIA

STANDARDS

- + IEEE 802.3
- + IEEE 802.3u

CONNECTIONS

- + Powerline
- + 10/100BaseTX

LEDs

- + Power
- + AP
- + Ethernet
- + Throughput

ENCRYPTION

3DES (Triple DES)

POWER SOURCE

110/120 VAC, 60Hz

OPERATING TEMPERATURE

32°F to 122°F (0°C to 50°C)

OPERATING HUMIDITY

10% to 95% (Non-condensing)

CERTIFICATIONS

- + FCC Part 15 Class B
- + CE Class B
- + UL60950-1

DIMENSIONS

- Adapter:
- + Item (WxDxH): 3.9" x 2.9" x 2.4"
- + Packaging (WxDxH): 8.2" x 5.4" x 3.7"
- Starter Kit (includes 2 DHP-302 adapters):
- + Item (WxDxH): 3.9" x 2.9" x 2.4"
- + Packaging (WxDxH): 10.8" x 8.1" x 3.7"

WEIGHT

- Starter Kit:
- + Item: 0.3 lbs
- + Packaging: 1.6 lbs
- Adapter:
- + Item: 0.3 lbs
- + Packaging: 0.7 lbs

WARRANTY

1-Year Limited³



¹ Maximum throughput based on theoretical transmission PHY rate. Actual data throughput will vary. Network conditions and environmental factors, including volume of traffic and network overhead, may lower actual data throughput rate. Interference from devices that emit electrical noise, such as vacuum cleaners and hair dryers, may adversely affect the performance of this product. This product may interfere with devices such as lighting systems that have a dimmer switch or a touch-sensitive on/off feature, short wave radios, or other powerline devices that do not follow the Universal Powerline Association (UPA) standard.

² Power outlets and electrical wiring must all be part of the same electrical system. Certain electrical conditions in your home, such as wiring condition and configuration, may affect the performance of this product. Additional D-Link PowerLine HD adapters required to add new devices to the network. A minimum of two D-Link PowerLine HD Ethernet Adapters are required to create a network. Connecting this product to a power strip with a surge protector may adversely affect the performance of this product. For best results, plug adapter directly into a wall outlet.

³ 1-Year Limited Warranty available only in the USA and Canada.

⁴ Latest software and documentation are available at <http://support.dlink.com>.

Product specification, size, and shape are subject to change without notice, and actual product appearance may differ from that depicted herein. See inside package for warranty details. D-Link PowerLine HD Ethernet Adapters (DHP-302, DHP-303) may coexist, but are not compatible or interoperable, with D-Link HomePlug AV Ethernet Adapters (DHP-304, DHP-305). This product is designed for use in the USA and Canada. Use of this product in other countries might violate local laws.

MINIMUM SYSTEM REQUIREMENTS

- + For Internet Connection:
 - Cable or DSL Modem
 - Router
 - Internet Service Provider Subscription
- + Computer with Network Interface Card
- + For Configuration Utility
 - Computer with:
 - 200MHz Processor
 - 64MB RAM
 - 10MB Hard Disk Space
 - CD-ROM
 - Windows XP® SP2 / Windows 2000 SP4

PACKAGE CONTENTS DHP-303

- + 2 PowerLine HD Ethernet Adapters
- + 2 Ethernet Cables
- + CD-ROM⁴ with:
 - Installation Wizard
 - Product Documentation

PACKAGE CONTENTS DHP-302

- + 1 PowerLine HD Ethernet Adapter
- + 1 Ethernet Cable
- + CD-ROM⁴ with:
 - Installation Wizard
 - Product Documentation

D-Link Systems, Inc. 17595 Mt. Herrmann Street, Fountain Valley, CA 92708

©2008 D-Link Corporation/D-Link Systems, Inc. All rights reserved. D-Link, the D-Link logo, and the MediaLounge logo are trademarks or registered trademarks of D-Link Corporation or its subsidiaries in the United States and other countries. Other trademarks or registered trademarks are the property of their respective owners.