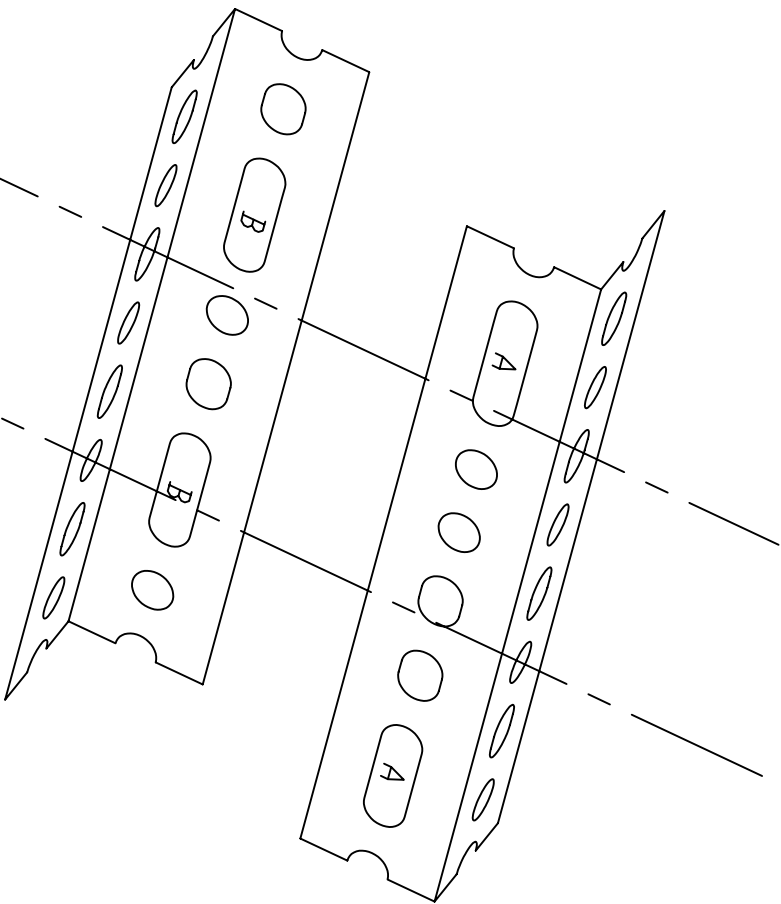
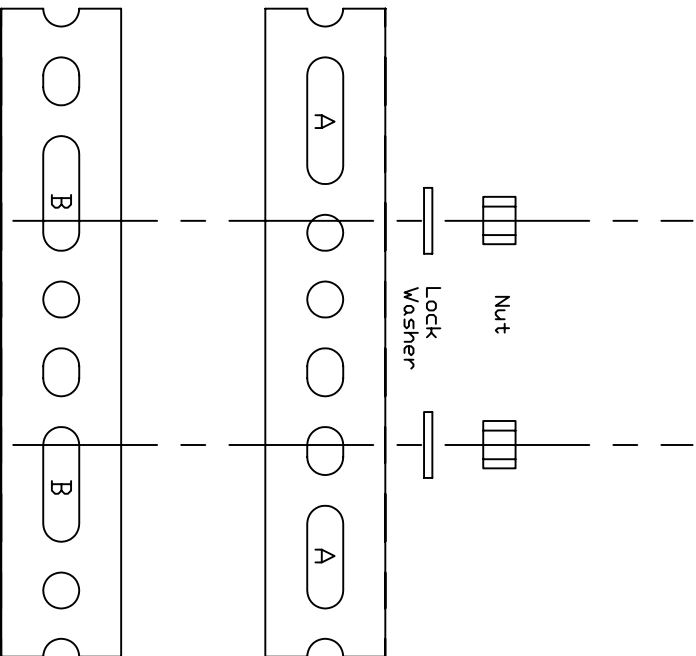


Final Bracket build:
You will now build 2 mounting brackets and mount them to the Primestar dish. Each bracket will consist of:
1 outer bracket
1 inner bracket
2 bolts
2 washers
2 lock washers
2 nuts

Interlock the outer and inner bracket uncut sides. Align the holes as closely as possible, the ends of the brackets should match, lining up the holes exactly is not important, having the brackets parallel and even end to end is important. Connect these together using the other hardware as shown. The third hole from each end worked best.



REVISIONS				
ZONE	REV	DESCRIPTION	DATE	APPROVED
N/A	1	INITIAL DRAWING	3/14/2003	Z

Weekend Warrior Primestar
HH-Mount Ku Retro-Fit project.

DRAWN BY: Ziploc

SIZE	FSCM NO.	DWG NO.	REV
A-L	N/A	03	1
SCALE	N/A	DWG NAME DISHFIT3	SHEET 3 of ?