

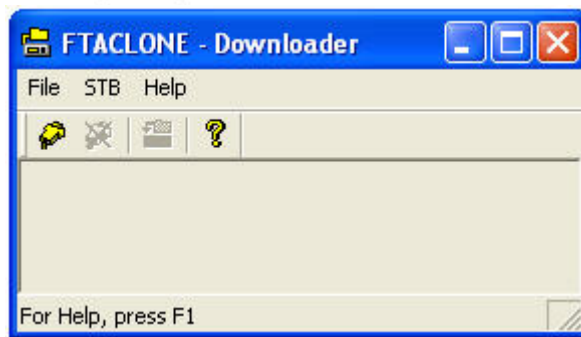
Instruction How-To program **SONICVIEW**

1. Turn OFF the STB by using the ON/OFF switch in the rear (see pic. 1)



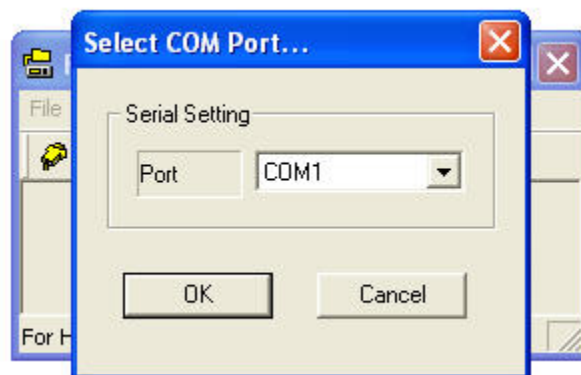
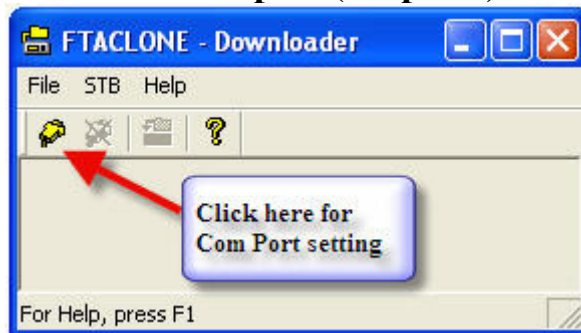
(pic. 1)

2. Open program Downloader (see pic. 2)



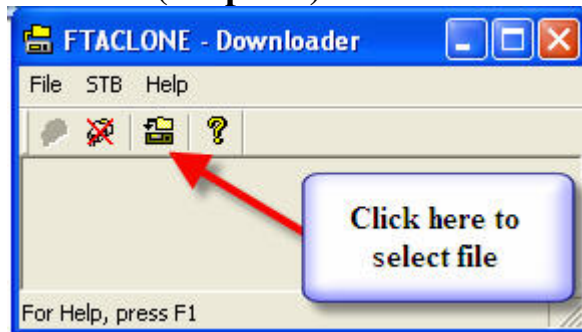
(pic. 2)

3. Click CONNECT to select COM port (see pic. 3)



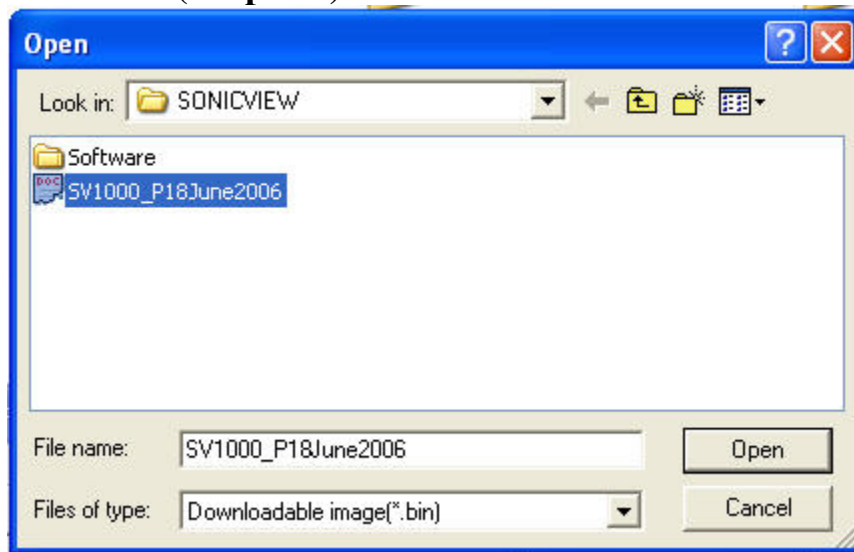
(pic. 3)

4. Click DOWNLOAD FILE (see pic. 4)



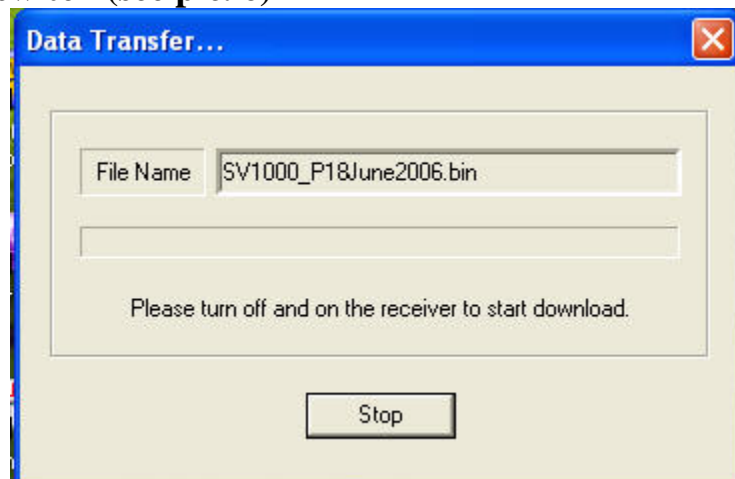
(pic. 4)

5. Choose current file (see pic. 5)



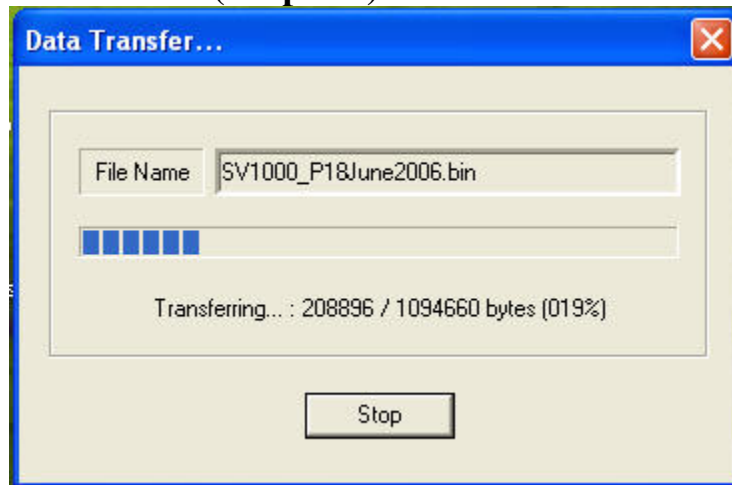
(pic. 5)

6. Once the Date Transfer window pop-up, turn the STB “ON” by using the rear ON/OFF switch (see pic. 6)



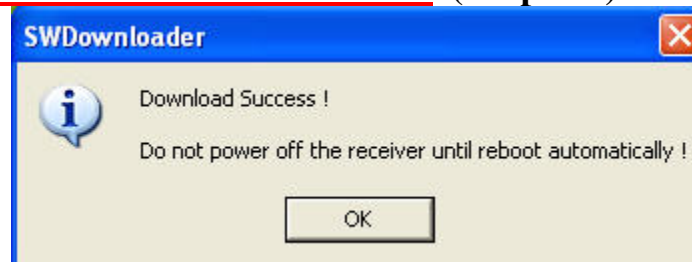
(pic. 6)

7. Once you have turn the STB “ON” by using ON/OFF switch in the rear, the file will start to transfer (see pic. 7)



(pic. 7)

8. Once the transfer completed, **PLEASE DO NOT TURN OFF THE STB UNTIL IT REBOOT AUTOMATICALLY** (see pic. 8)



Now you can go into setup by Press Menu>>>Channel Search
For User Setting, Press Menu>>>System Setting

Shortcut button:

USER button: Closed Caption ON/OFF mode

Red button: Category theme

Yellow button: Data Transfer

Blue button: Multi Picture

Thank you for using
SONICVIEW