

# DOWNLOAD A NEW SOFTWARE TO RECEIVER

## 1. BEFORE DOWNLOAD – WHAT YOU NEED

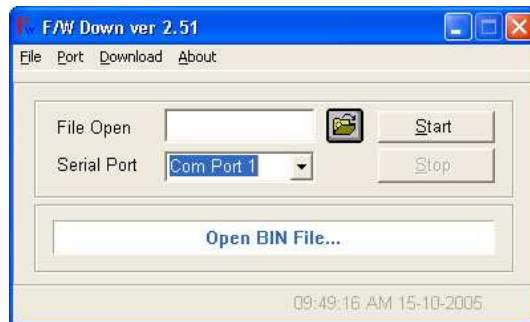
- 1) RS-232C Serial-Cable (Twisted)
- 2) Downloader Program
- 3) Software (Binary file) : Main.bin

## 2. DOWNLOAD PROCESS

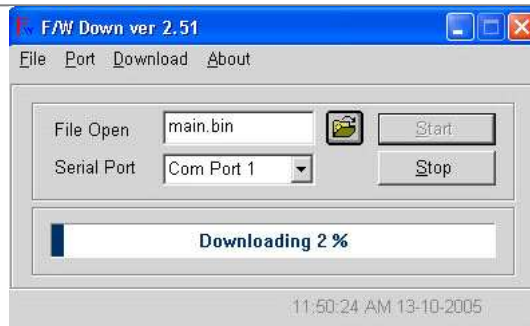
- 1) Copy "main.bin" file to any root directory of your PC
- 2) Download the new software to your RECEIVER
  - a) Connect your PC (Com1 or Com2) with your RECEIVER by using RS-232C Cable
  - b) AC Power OFF (AC Power is at Rear side)
  - c) Double-click to open "Downloader" program on the PC.



- d) Select Com1 and Open "main.bin" file



- e) Click "Start"



- f) AC Power ON. at Rear Side of the RECEIVER
- g) Wait until termination- message appears on the "Downloader" program on the PC. or "SUCC" displays at your

RECEIVER's Front LED.



- h) After notification of "Termination message", AC Power Off.
- i) Now, main.bin sw download-process terminates.



**CAUTION**

In case you see "Connection fail with STB". It means you did not Turn-off the RECEIVER at first. Turn-off the RECEIVER First, then turn-on after executing the Downloader program.