

Instructions For Downloading Software to Your Fortec Star Satellite Receiver

Warning: To avoid invalidating your warranty, contact your dealer to have a Fortec Star trained technician upload software to your receiver. Only a Fortec Star trained technician is authorized to upgrade software. Should a receiver be returned for repair under warranty which has had software loaded or upgraded by anyone other than an authorized Fortec Star technician, the warranty will be null and void and the receiver will be returned freight collect to the sender in the same condition it was received.

Only the original software and the upgrade software available on this Web site can be used with your Fortec Star receiver. Under no circumstances, can any other software be used with a Fortec Star receiver.

Instructions for the following model:

MERCURY II

Follow the steps below:

Start by creating a directory on your PC for the software that you will download. Download the appropriate software for your model of Fortec Star satellite receiver from the Fortec Star Web site to the directory you created on your PC. All Fortec Star software available for downloading can be found at the Web address <http://www.fortecstar.com/downloads/>. The software you download from the Web site will be a ZIP file. You will need to extract the files from the ZIP archive. For more information on using ZIP files, see www.winzip.com.

List of software:

Uploader: The Uploader is needed for transferring software to your receiver.

Firmware File: You will use the Uploader program to transfer the Application file (firmware) to your receiver.

Both the Uploader and the Firmware files will be contained in a ZIP file. Extract the files from the ZIP archive.

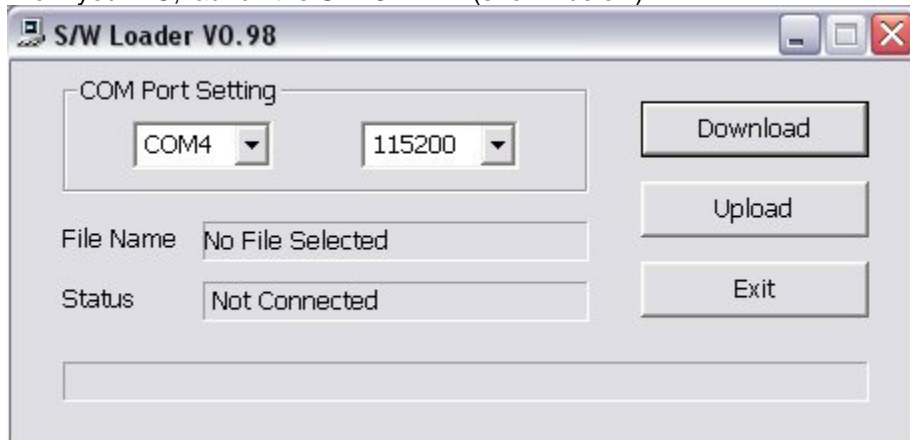
Once you have extracted the files, you are then ready to transfer the software from your PC to your receiver.

Uploading the Receiver's Application File (Firmware) From Your PC to Your Receiver:

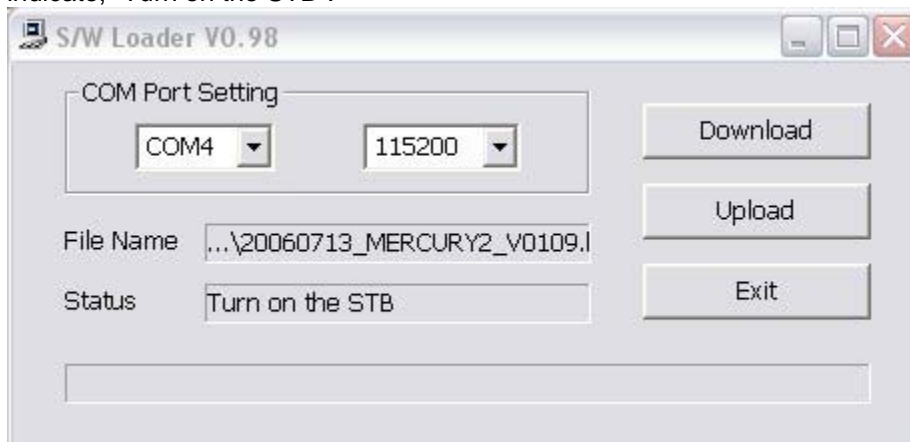
Note: With the Mercury II receiver, you can back-up the channels in the receiver before you download new software. If you already have channels downloaded to the receiver, we recommend that you do this since you will need to Factory Reset the receiver after downloading new software. To back-up the channels, go to the Installation menu in the receiver. Select Factory Reset. Then select Channel Backup and press OK. When prompted, select "Yes". You are now ready to transfer software to your receiver.

1. Make sure the power is off on your receiver by using the Power switch on the back of the receiver. Connect the cable from your PC to your receiver. The receiver uses a RS232 connection. For uploading the software, you will need a female-to-female NULL modem cable.

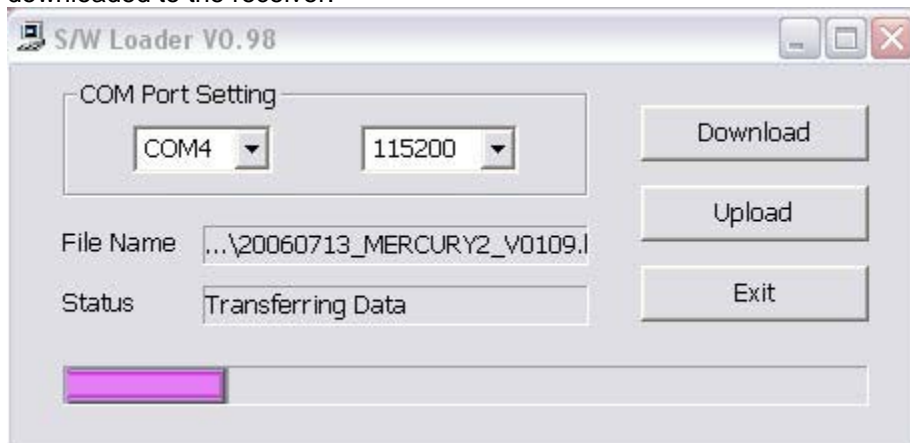
2. From your PC, launch the UPLOADER (shown below).



3. Click on "Download", and then select the firmware file to be downloaded to the receiver. You will see the file you selected appear in the File Name field, and the Status field will indicate, "Turn on the STB".



4. Turn the receiver on by using the Power switch on the back of the receiver. The Status will change to "Transferring Data", and you will see the progression bar as the software is downloaded to the receiver.



5. Once the software has completed transferring, you will see a message as shown below. Do not disrupt the software transfer process until it is complete, or it may permanently damage your receiver. (Warning: Your manufacturer warranty is voided if you change

the software in your receiver. If you do not want to void your warranty, DO NOT transfer software to your receiver.)
Click on OK.



6. You can now close the Loader.
7. You should now factory reset the receiver. To do so, go to the Installation Menu in the receiver. Select Factory Reset. Press OK on the Factory Reset item. When prompted, select "Yes".
8. If you performed the Channel Backup function before resetting the receiver, you can now perform the Channel Recovery function to once again re-load all your saved channels. To do so, go to the Installation Menu in the receiver. Select Factory Reset from the Installation Menu. Then select Channel Recovery. When prompted, select "Yes". Then press EXIT to view your TV channels again.

Instructions for the following models:

LIFETIME CLASSIC NA

PLATINUM NA

FSIR-5400 NA

Follow the steps below:

Start by creating a directory on your PC for the software that you will download. Download the appropriate software for your model of Fortec Star satellite receiver from the Fortec Star Web site to the directory you created on your PC. All Fortec Star software available for downloading can be found at the Web address <http://www.fortecstar.com/downloads/>. The software you download from the Web site will be a ZIP file. You will need to extract the files from the ZIP archive. For more information on using ZIP files, see www.winzip.com.

List of software:

Uploader: The Uploader is needed for transferring software to your receiver.

Firmware File: You will use the Uploader program to transfer the Application file (firmware) to your receiver.

Both the Uploader and the Firmware files will be contained in the same ZIP file. Extract the files from the ZIP archive.

Once you have extracted the files, you are then ready to transfer the software from your PC to your receiver.

Uploading the Receiver's Application File (Firmware) From Your PC to Your Receiver:

1. Make sure the power is off on your receiver. Connect the cable from your PC to your receiver. The receiver uses a RS232 connection. For uploading the software, you will need a female-to-female NULL modem cable.
2. From your PC, launch the UPLOADER.



3. Click the Browse button and select the firmware file. This file should be found in the directory for the Firmware file you downloaded.
4. Put the receiver's AC power ON. Select the Download button.
5. Click the START button to begin the download process.



The download will happen automatically. You will see the downloading progress on your PC while you are waiting.



6. Your PC will indicate when the download has completed if it is successful. Click EXIT.



WARNING: DO NOT UNPLUG YOUR RECEIVER FROM THE POWER OUTLET UNTIL AFTER THE FILE HAS FINISHED DOWNLOADING AND THE RECEIVER HAS BOOTED UP.

Special Instructions for Downloading X-CRYPT Compatible Software For The Lifetime Classic NA Receiver:

If you want to use an external X-CRYPT card reader with your Lifetime Classic NA receiver, you will need to download new software to your receiver that makes the receiver compatible with the card reader. (Note: The X-CRYPT card reader connects to the RS 232 port on the receiver. The new software converts the 232 port to be compatible with the X-CRYPT card reader.)

You use the same Loader Tool available from the Lifetime Classic NA downloads section of the Web site (www.fortecstar.com). You will also need the External X-CRYPT Card Reader Compatible Software.

Uploading the External X-CRYPT Card Reader Compatible Software From Your PC to Your Receiver:

1. Make sure the power is off on your receiver. Connect the cable from your PC to your receiver. The receiver uses a RS232 connection. For uploading the software, you will need a female-to-female NULL modem cable.

2. Follow the same process as outlined in the previous section. However, once the software is successfully downloaded to the receiver, you will not see the message "Downloading is Successful". Instead, the receiver will re-boot, and you will see the following message:



Even though the software has successfully downloaded, the "failed" message appears. This is due to the fact that the new software has changed the communication function of the RS232 port on the receiver. The Loader does not get back the expected return message from the RS232 port that it gets from downloading a normal file.

If the receiver successfully boots-up, you can ignore the "failed" message. You are now ready to connect your external X-CRYPT card reader to the RS232 port of the receiver.

Instructions For Loading Software to The Receiver if The External X-CRYPT Card Reader Compatible Software Is Already Loaded To The Receiver:

1. The X-CRYPT Card Reader Compatible Software changes the communication function of the RS232 port on the receiver. Because of this, the process for loading original software back into the receiver has to be modified. You use the same Loader tool, but you must load the software from the BOOT MODE. (This means activating the download process by turning the power on from the power switch on the back of the receiver.)
2. Start by turning the power off using the power switch on the back of the receiver.
3. Using the Loader tool, select the file to be loaded using the Browse button and then click Download. The Loader may alternate between COM ports. Select START at any point.



4. After pressing the START button, the following message will appear. Press OK.



5. When you see the message "Waiting for the response of your receiver", turn on the power switch located in the back of the receiver.



6. The software will start to download, and the following message will appear.



Your PC will indicate when the download has completed if it is successful. Click EXIT.

Instructions for the following models:

Lifetime	MAGIC WORLD PLUS
Lifetime Ultra	5600 Plus
SUPER WORLD	5100 Plus+
Lifetime Diamond	5100 Plus Ultra
5100 Diamond	

Follow the steps below:

Start by creating a directory on your PC for the software that you will download from our Web site. Download the appropriate software for your model of Fortec Star satellite receiver from the Fortec Star Web site to the directory you created on your PC. All Fortec Star software available for downloading can be found at the Web address <http://www.fortecstar.com/downloads/>. The software you download from the Web site will be a ZIP file. You will need to extract the files from the ZIP archive. For more information on using ZIP files, see www.winzip.com.

List of software you may need to download:

Uploader: The Uploader is needed for transferring software to your receiver.

Firmware File: You will use the Uploader software to transfer the Compress Application file (firmware) to your receiver.

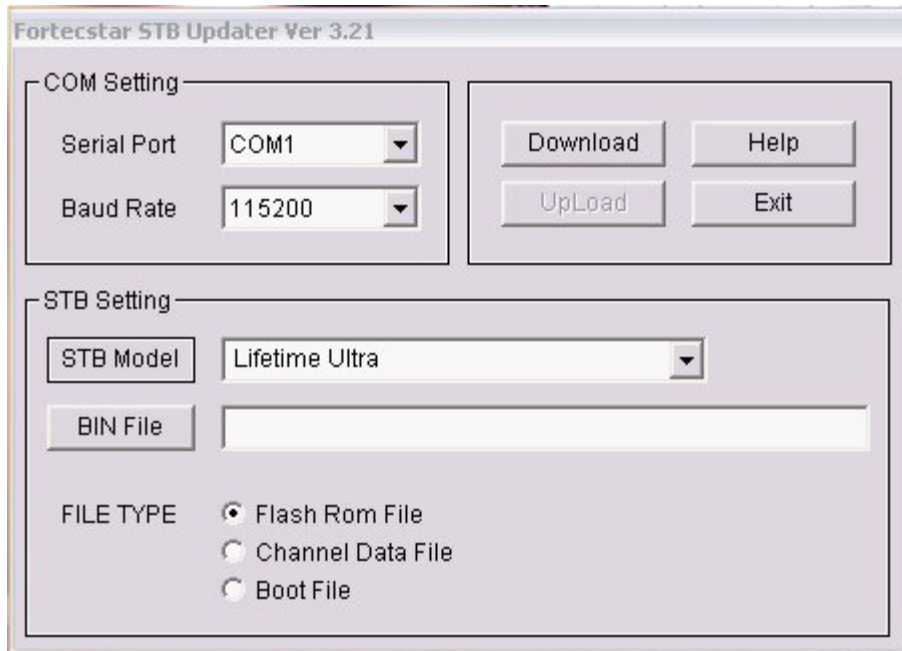
Once you have downloaded the software you need to your PC, you are then ready to transfer the software from your PC to your receiver.

Uploading the Receiver's Application File (Firmware) From Your PC to Your Receiver:

1. Make sure the power is off on your receiver. Connect the cable from your PC to your receiver. The receiver uses a RS232 connection. For uploading the software, you will need a **female-to-female 9-pin straight through serial cable (not a NUL modem cable)**.

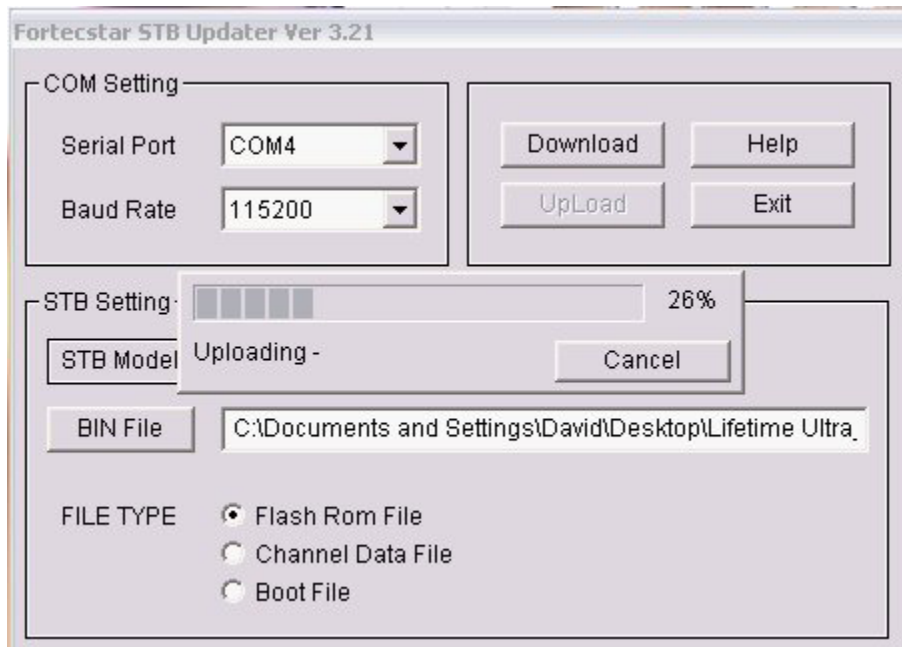
If your computer does not have RS232 connection, a USB port can be used. However, you will need an adapter to connect from your USB port to one of the female ends of the serial cable.

2. From your PC, launch the UPLOADER. (If you don't already have it, you will need to download the UPLOADER software. This software is also available in the Downloads section of our Web site. Once you have downloaded the software, extract the unzipped files. Then find the application file (.exe file) from within the directory you created, and double click it. UPLOADER program will pop up on your screen. It may not look exactly as shown below in step 4, but will function the same.
3. Select the "COM 1 port" for your PC. If you are using a different port, then select the correct port.
4. In the STB Model file, enter the model for your receiver, i.e., **Lifetime**, or **Lifetime Ultra**, etc.



5. Select the firmware file (file extension will be .bin) for the Bin File field. This file should be found in the directory for the Firmware file you downloaded.
6. Put the receiver's AC power ON. Wait for the receiver to turn on. Select the Download button. Follow the on-screen messages.

The download will happen automatically. You will see the downloading progress on your PC while you are waiting.

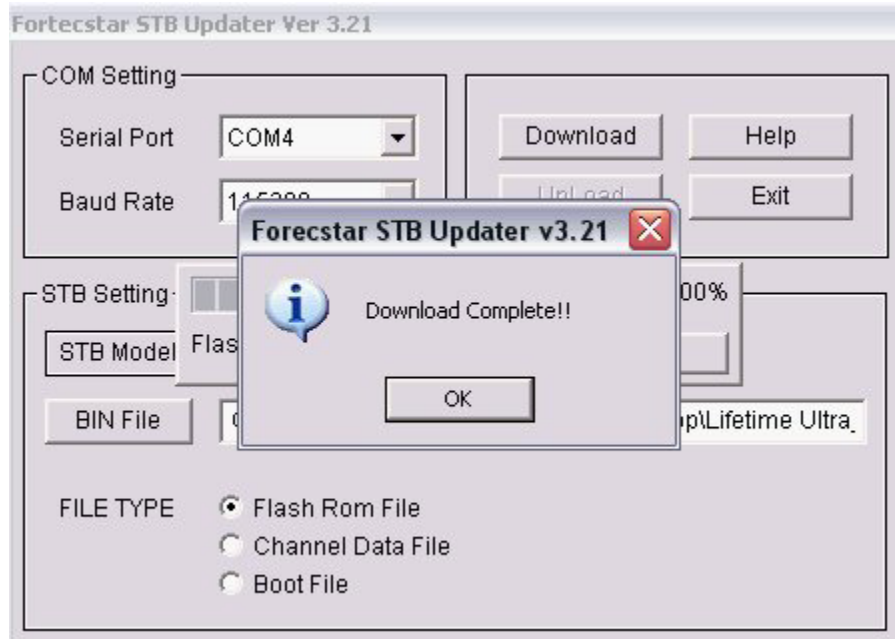


Your PC will indicate when the download has completed, and if it is successful.

WARNING: DO NOT UNPLUG YOUR RECEIVER FROM THE POWER OUTLET UNTIL AFTER THE FILE HAS FINISHED DOWNLOADING.

WAIT UNTIL YOU SEE THE MESSAGE “ DOWNLOAD COMPLETE!!”

If you try to operate the receiver before you see this message, YOU WILL DAMAGE THE RECEIVER. AND REMEMBER, transferring software to your receiver voids the manufacturer warranty.



Instructions for the following models:

DVB786v2	FSMCI-6000
DVB786v3	FSMCI-6100HA
DVB786NA	FSCI-9800v2
FSIRCI-5400Z	FSCI-9800HDD/HA
FSIRCI-5800HDD/HA	

Follow the steps below:

Start by creating a directory on your PC for the software that you will download. Download the appropriate software for your model of Fortec Star satellite receiver from the Fortec Star Web site to the directory you created on your PC. All Fortec Star software available for downloading can be found at the Web address <http://www.fortecstar.com/downloads/>. The software you download from the Web site will be a ZIP file. You will need to extract the files from the ZIP archive. For more information on using ZIP files, see www.winzip.com.

List of software you may need to download:

Uploader: The Uploader is needed for transferring software to your receiver.

Compress Application File: You will use the Uploader software to transfer the Compress Application file (firmware) to your receiver. The file extension for this software is '.img'.

Boot Loader: You will use the Uploader software to transfer the 'Loader' file to your receiver.

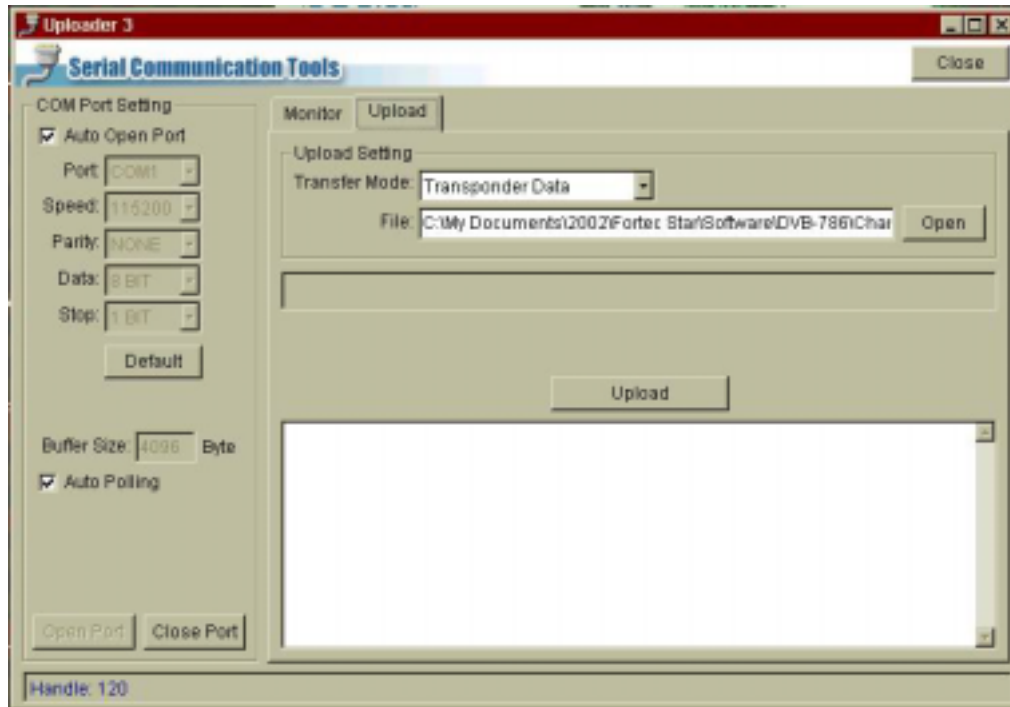
Channel Data: You will use the Uploader software to transfer the TP Data to your receiver.

Radio & Menu Pictures: You may choose to change your Radio or Menu picture to one of your own, or to a picture available for downloading from our site. (This feature can not be done on the FTA models DVB-786v2 / DVB-786v3 / DVB-786NA.)

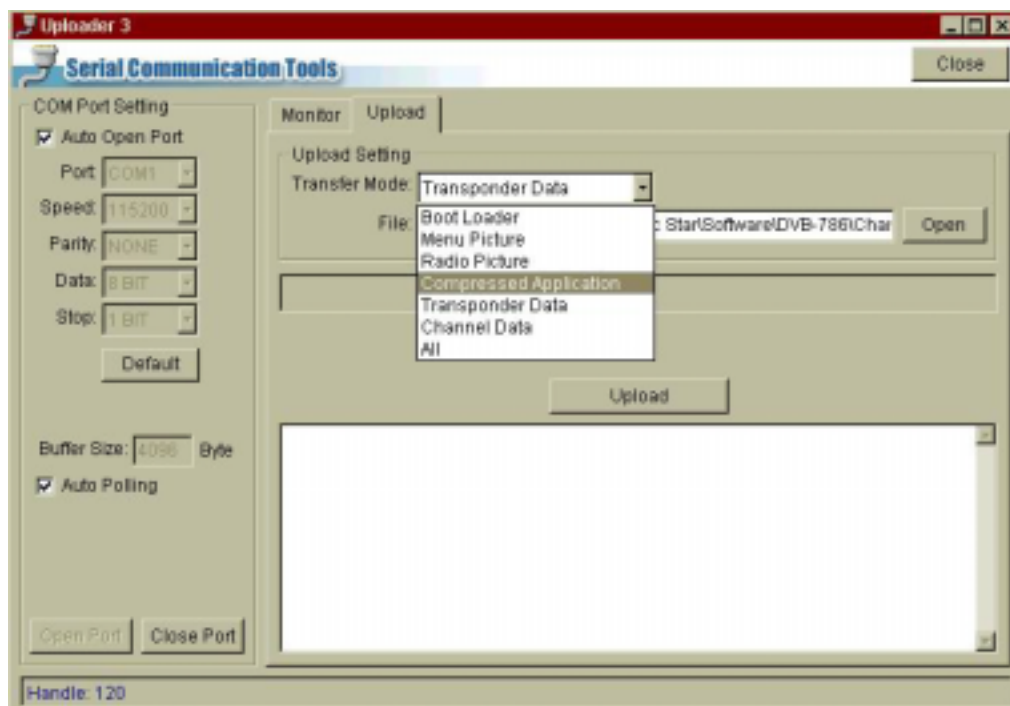
Once you have downloaded the software you need to your PC, you are then ready to transfer the software from your PC to your receiver.

Uploading the Receiver's Application File (Firmware) From Your PC to Your Receiver: (Applicable for Free-to-Air and Common Interface models)

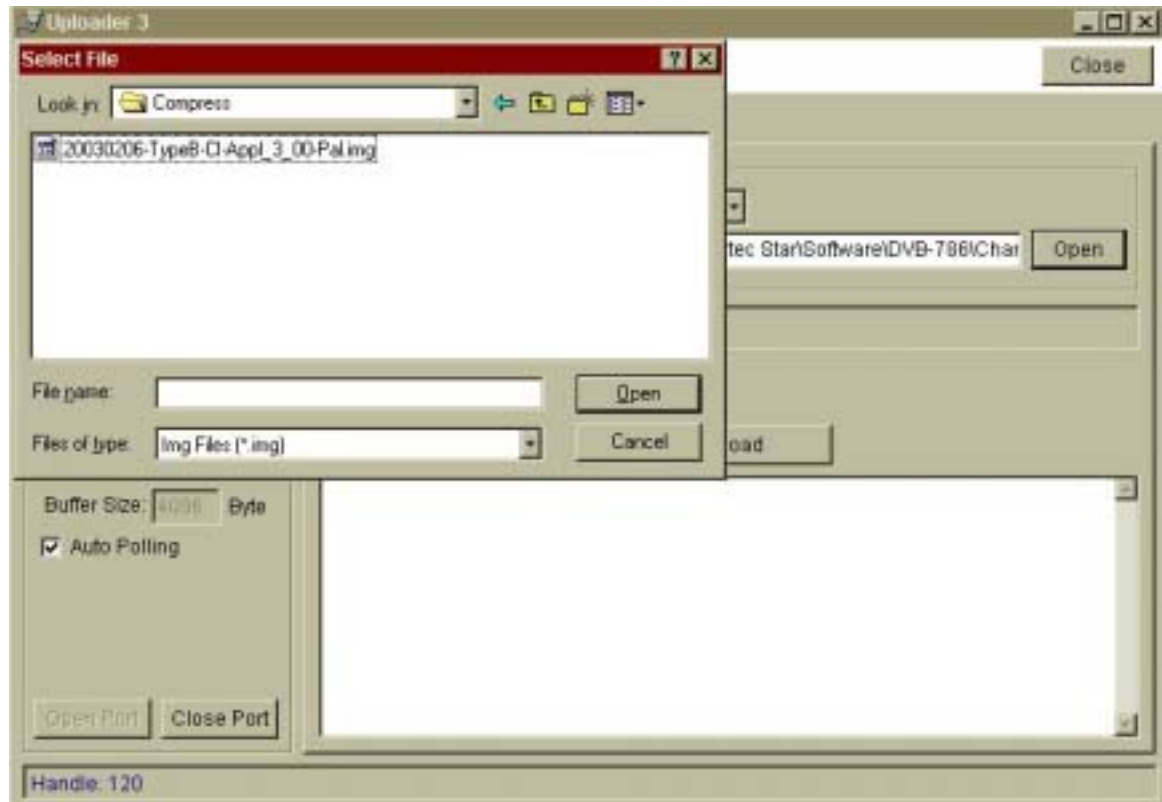
1. Make sure the power is off on your receiver. Connect the cable from your PC to your receiver. The receiver uses a RS232 connection. For uploading the software, you will need a female-to-female NULL modem cable.
2. From your PC, launch the UPLOADER. (If you don't already have it, you will need to download the UPLOADER software. This software is also available in the Downloads section of our Web site. Once you have downloaded the software, extract the unzipped files. Then find the application file named UPLOAD from the files within the directory you created, and double click it. UPLOADER program will pop up on your screen. It will look similar to the illustration below for version 3.0. It will look different for other versions. These instructions are the same regardless of the version of the UPLOADER you are using.)



3. Select the serial port (COM port) you are using for uploading if different from the default setting. You may not need to change the default setting COM1, depending on the serial ports on your PC.
4. Select the transfer mode COMPRESS APPLICATION mode.



5. Select the firmware file (file extension '.img'). This file should be found in the directory for the Compress Application file you downloaded.



6. Select the Upload button (or the START button on older versions of the Uploader). Follow the on screen messages.

The download will happen automatically. You will see the downloading progress on your PC while you are waiting.

7. Your PC will indicate when the download has completed if it is successful.

WARNING: DO NOT UNPLUG YOUR RECEIVER FROM THE POWER OUTLET UNTIL ITS FRONT PANEL INDICATES A CHANNEL NUMBER OR INDICATES “NO CH”.

(Unplugging the receiver before this point will damage the receiver.)

Follow the same steps for transferring a TP File or other file to your receiver from your PC. However, to transfer a different file, make sure that you select the appropriate Transfer Mode in step 4.

Receiver-to-Receiver Copy Function:

If you have tuned your satellite receiver then you can copy the channel and user-setting data onto another receiver of the same make and model. To do this you require a female-to-female 'NULL Modem' cable with the pin configuration as below. To copy proceed with below steps.

STEPS

1. Connect your lead to 'RS232' connectors (**R11**) on both the receivers.
2. Power on the master receiver from which you want to copy the data.
3. Power on the slave receiver onto which you want to copy the data.
4. The front display on the master receiver's will start counting up. When transfer is finished it will indicate 'END'
5. When finished the slave receiver will indicate a channel number e.g. 0002 or NOCH.

CABLE PIN CONFIGURATION

PC 9 pin	f-box 9 pin
5	5
3	2
2	3
8	7
7	8
6	4
4	6

Instructions for the following models:

FSCI-5100 FSCI-5200PVR
FSCIP-5100 FSCOX-5600CI
FS-5900

Follow the steps below:

Start by creating a directory on your PC for the software that you will download. Download the appropriate software for your model of Fortec Star satellite receiver from the Fortec Star Web site to the directory you created on your PC. All Fortec Star software available for downloading can be found at the Web address <http://www.fortecstar.com/downloads/>. The software you download from the Web site will be a ZIP file. You will need to extract the files from the ZIP archive. For more information on using ZIP files, see www.winzip.com.

List of software you may need to download:

Uploader: The Uploader is needed for transferring software to your receiver.

Firmware File: You will use the Uploader software to transfer the Compress Application file (firmware) to your receiver.

Once you have downloaded the software you need to your PC, you are then ready to transfer the software from your PC to your receiver.

Uploading the Receiver's Application File (Firmware) From Your PC to Your Receiver:

1. Make sure the power is off on your receiver. Unplug the receiver from the power outlet. Connect the cable from your PC to your receiver. The receiver uses a RS232 connection. For uploading the software, you will need a female-to-female NULL modem cable.
2. From your PC, launch the UPLOADER. (If you don't already have it, you will need to download the UPLOADER software. This software is also available in the Downloads section of our Web site. Once you have downloaded the software, extract the unzipped files. Then find the install application file named Setup from the files within the directory you created, and double click it. Once the Setup is completed, find the application file named EMUpgarde.exe from the files within the directory you created, and double click it. The UPLOADER program will pop up on your screen.
3. Download is possible only through "COM 1 port" of the PC.
4. Select the firmware file. This file should be found in the directory for the Firmware file you downloaded.
5. Select the Start button. Put the receiver's AC power ON by plugging the receiver into the power outlet.

Follow the on screen messages.

The download will happen automatically. You will see the downloading progress on your PC while you are waiting.

6. Your PC will indicate when the download has completed if it is successful.

WARNING: DO NOT UNPLUG YOUR RECEIVER FROM THE POWER OUTLET UNTIL AFTER THE FILE HAS FINISHED DOWNLOADING.