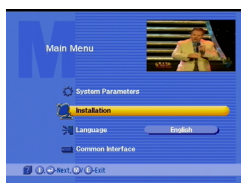


GEOSAT_{pro} DVR1000ci

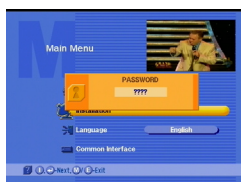
Add Transponders / Scan Channels

Do you want to add a new Free to Air channel, but cannot find the correct Transponder in the TP list? It is easy to add a new TP to your GEOSAT_{pro} DVR1000ci and scan for new channels.

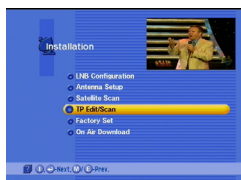
Press the **Menu** Key on the remote control.



Select **Installation**, Press **Enter** key

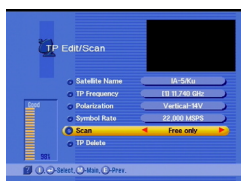


Input Password **0,0,0,0**



Select **TP Edit / Scan**, Press **Enter**

Example:



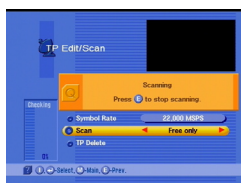
Select Satellite Name **IA-5Ku**

If the TP Frequency is not in the list:

- Enter TP Frequency **11740**
- Select Polarization **Vertical**
- Enter Symbol Rate **22,000 MSPS**

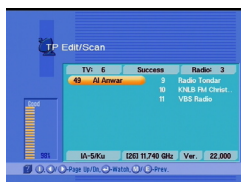
Select Scan **Free Only**

The Signal Quality Meter on the left of the screen should indicate 30% or better reading. If not, adjust the dish or LNBF placement to peak for better quality before scanning for new channels.

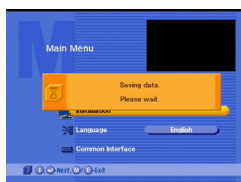


Once the Quality Reading is 30% or better, Press **Enter**

A window will indicate that the units is scanning for new channels.



The list of found TV and Radio channels will be displayed. Press **Menu** 3 times to exit.



The new channels will be saved.



Enjoy the new TV / Radio Channels!

Repeat these steps add a new transponder or scan transponders for new channels. Find new transponders and channels at <http://www.lyngsat.com> or the Glorystar Christian satellite channels at <http://www.glorystar.tv>