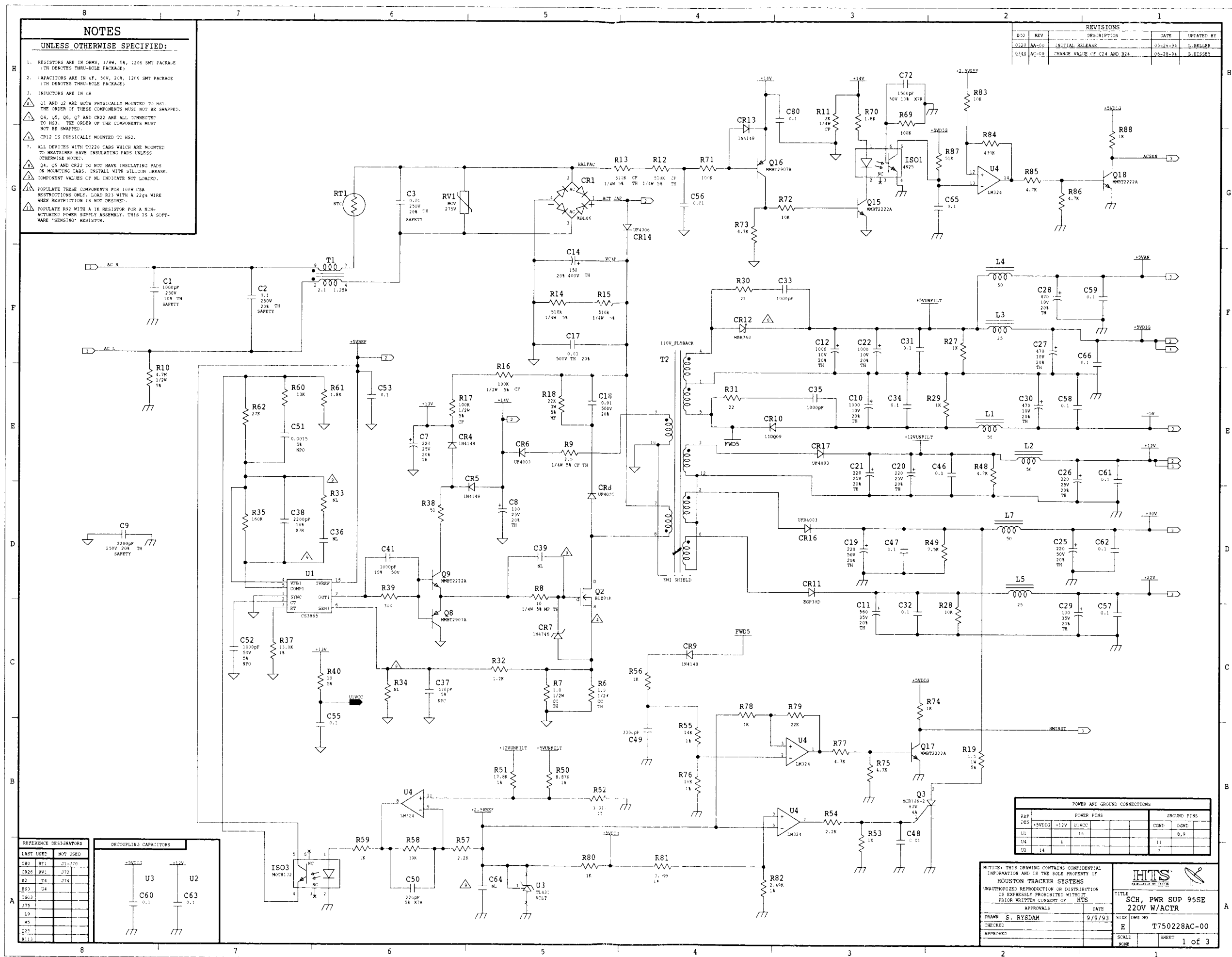


NOTES

UNLESS OTHERWISE SPECIFIED:

1. RESISTORS ARE IN OHMS, 1/8W, 5%, 1206 SMT PACKAGE (TH DENOTES THRU-HOLE PACKAGE).
2. CAPACITORS ARE IN pF, 50V, 20%, 1206 SMT PACKAGE (TH DENOTES THRU-HOLE PACKAGE).
3. INDUCTORS ARE IN uH.
4. Q1 AND Q2 ARE BOTH PHYSICALLY MOUNTED TO HS1. THE ORDER OF THESE COMPONENTS MUST NOT BE SWAPPED.
5. Q4, Q5, Q6, Q7 AND CR22 ARE ALL CONNECTED TO HS3. THE ORDER OF THE COMPONENTS MUST NOT BE SWAPPED.
6. CR12 IS PHYSICALLY MOUNTED TO HS2.
7. ALL DEVICES WITH T0180 TABS WHICH ARE MOUNTED TO HEATSINKS HAVE INSULATING PADS UNLESS OTHERWISE NOTED.
8. Q4, Q5 AND CR22 DO NOT HAVE INSULATING PADS ON MOUNTING TABS. INSTALL WITH SILICON GREASE. COMPONENT VALUES OF NL INDICATE NOT LOADED.
9. POPULATE THESE COMPONENTS FOR 100W CSA RESTRICTIONS ONLY. LOAD R23 WITH A 220A WIRE WHEN RESTRICTION IS NOT DESIRED.
10. POPULATE R92 WITH A 1K RESISTOR FOR A NON-ACTUATED POWER SUPPLY ASSEMBLY. THIS IS A SOFTWARE "SENSING" RESISTOR.

REV		DESCRIPTION	DATE	UPD BY
000	001	INITIAL RELEASE	05-20-94	L. BELGER
0144	AC-03	CHANGE VALUE OF C24 AND R24	06-28-94	B. BISSEY



LAST USED	NOT USED
C80	R11
C82	R12
C83	R13
C84	R14
C85	R15
C86	R16
C87	R17
C88	R18
C89	R19
C90	R20
C91	R21
C92	R22
C93	R23
C94	R24
C95	R25
C96	R26
C97	R27
C98	R28
C99	R29
C100	R30

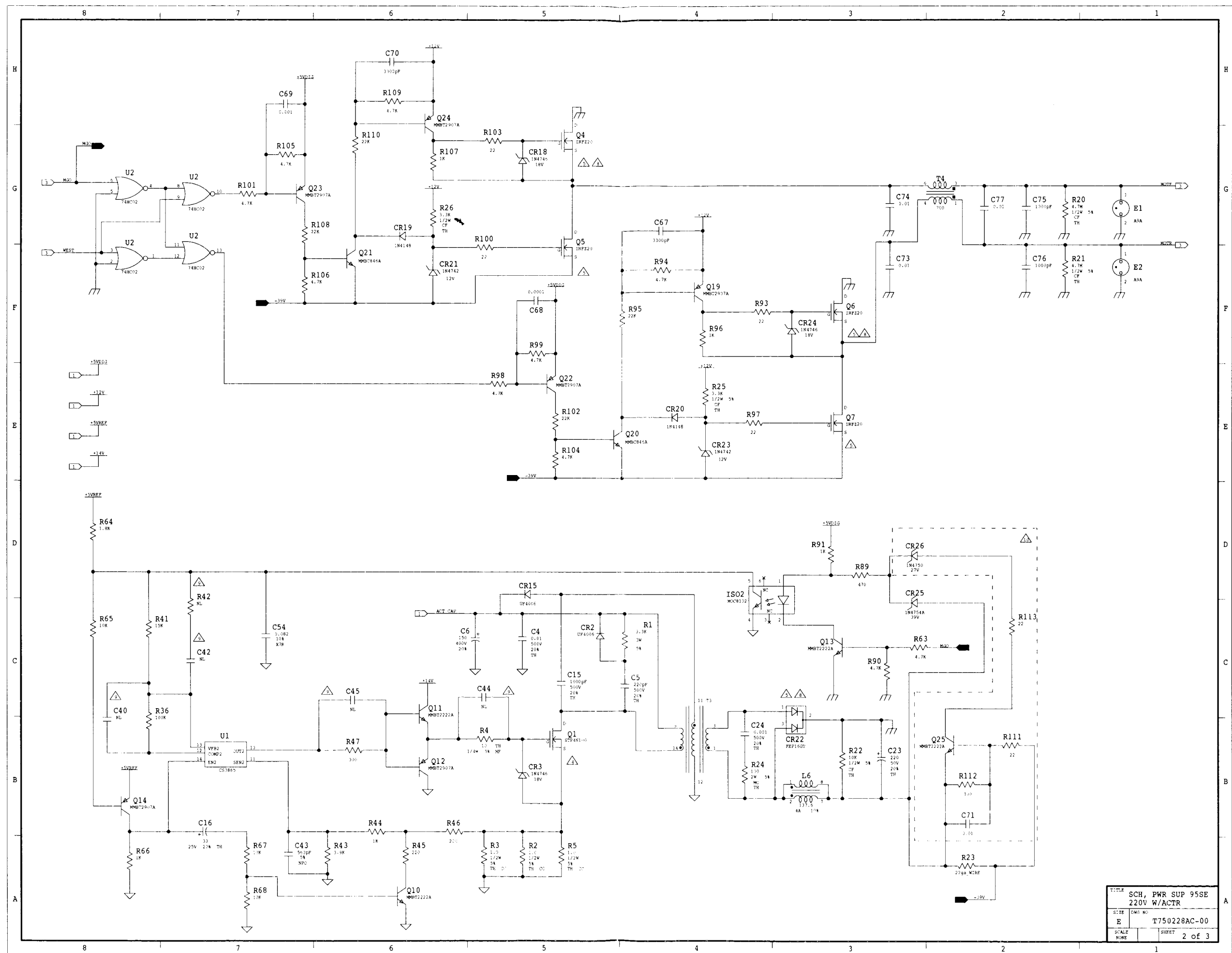
DECOUPLING CAPACITORS
U3
U2
C60
C63

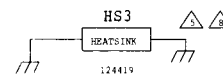
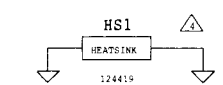
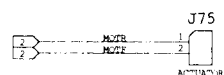
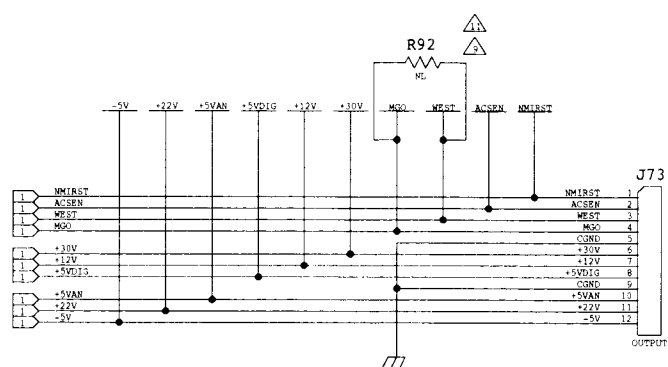
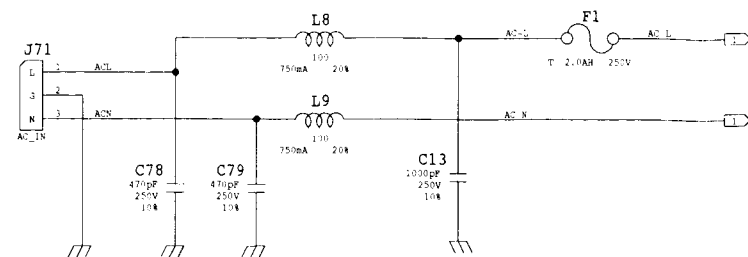
POWER AND GROUND CONNECTIONS	
REF	POWER PINS
DES	+5VREG
U1	+12V
U4	16
U2	14
GROUND PINS	
COND	COND
11	8,9
7	7

NOTICE: THIS DRAWING CONTAINS CONFIDENTIAL INFORMATION AND IS THE SOLE PROPERTY OF HOUSTON TRACKER SYSTEMS. UNAUTHORIZED REPRODUCTION OR DISTRIBUTION IS EXPRESSLY PROHIBITED WITHOUT PRIOR WRITTEN CONSENT OF HTS.

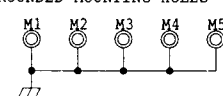
HTS
T750228AC-00
TITLE
SCH. PWR SUP 95SE
220V W/ACTR
DATE
9/9/93
DRAWN
S. RYSDAM
CHECKED
APPROVED

SCALE
NONE
SHEET
1 of 3





GROUNDING MOUNTING HOLES



TITLE		SCH, PWR SUP 95SE	
SIZE		220V W/ACTR	
E		T750228AC-00	
SCALE		SHEET 3 of 3	