

TV2 IR Converter

Provides infrared (IR) control of TV2 on a dual-tuner DISH Network receiver

Applications include:

- Using a non-DISH Network universal IR remote control.
- Slingbox control of TV2 (Single Mode or Dual Mode installation options).
- Using an IR remote control when UHF remote control operation is not desired (such as multi-dwelling units with UHF Pro remote control conflicts from neighbors).

Features:

- The TV2 IR Converter provides a convenient way to control dual-tuner, two-TV satellite receivers from a distant location via infrared (IR), instead of UHF Pro.
- The switches on the unit (see image on page 2) provide control of TV1 or TV2 and a choice of UHF Pro Band A or Band B.
- The 2.5mm stereo jack override port is used so a Slingbox can control TV2 (IR cable is included).

Connectivity Scenarios:

The following scenarios are possible, but require specific connectivity and remote control setup. Refer to the **Considerations** on page 2, and the *TV2 IR Converter Kit User Guide* for details:

- Converter is used at TV2 with any universal IR or DISH Network IR remote control (see Diagram A).
- Converter is used to control TV2 with a Slingbox, with independent control of TV2 (see Diagram B; receiver is in Dual Mode).
- Converter is used to control TV2 with a Slingbox, but independent control of TV2 is not required (see Diagram C; receiver is in Single Mode).

Contents:

- TV2 IR Converter with sensor
- IR cable for Slingbox
- Three 10' RG-6 coax cables
- Two-way splitter
- DC power supply
- Installation Manual

Compatible Receivers:

- DISH 322
- DISH Player 522 DVR
- DISH Player 625 DVR
- ViP®222
- ViP®222k
- ViP®622 DVR
- ViP®722 DVR
- ViP®722k DVR

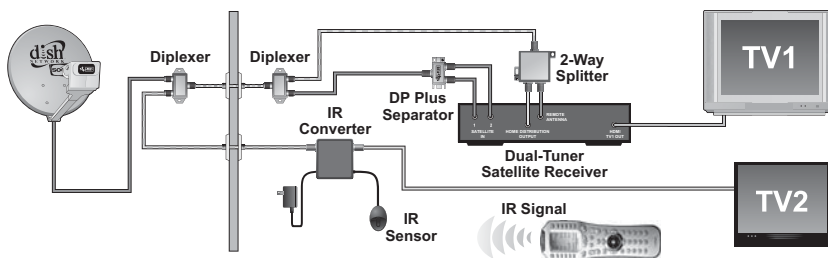


Diagram A: TV2 IR Converter used with any IR Remote Control

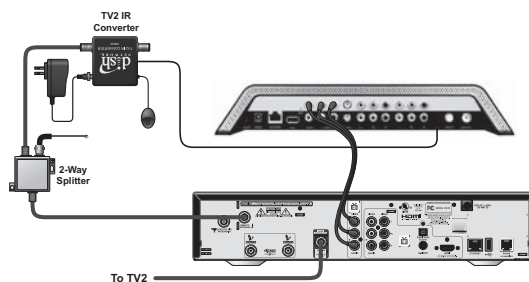


Diagram B: TV2 IR Converter used with Slingbox (TV2 in Dual Mode)

Considerations:

- **If the Converter is used at TV2 with a DISH Network remote** (for all receiver models except the ViP222k and ViP722k—see below):
 1. Flip the remote's key to the black UHF side (Figure 1) to transmit IR/legacy UHF; for replacement remote kits, the silver IR key will also work. **Note: this still controls TV2.**
 2. Set the Converter to TV2. **Note: if the Converter is used to control a 322, 522 or 625 receiver,** you must set the Converter to Band A and set the Converter's TV 2/1 switch accordingly.
- **If the Converter is used to control a ViP222k or a ViP722k:**
 1. Set the Converter to Band A if the remote uses an odd-numbered address; set to Band B if the remote uses an even-numbered address; set the Converter's TV2/1 switch accordingly.
 2. Leave the remote key as blue TV2, but set the UHF/IR switch inside the receiver's 21.0 remote control's battery compartment to IR.
- **If the Converter is used to control TV2 with a Slingbox, and you also want independent control of TV2,** you must set the Converter to TV2 and set the remotes as follows:
 - TV1's address is set to anything but address 1.
 - TV2's address must be 1 and the Band A/B switch inside the battery compartment of the TV2 remote control must match the A/B switch on the Converter.

For More Information:

TV2 IR Converter Kit User Guide

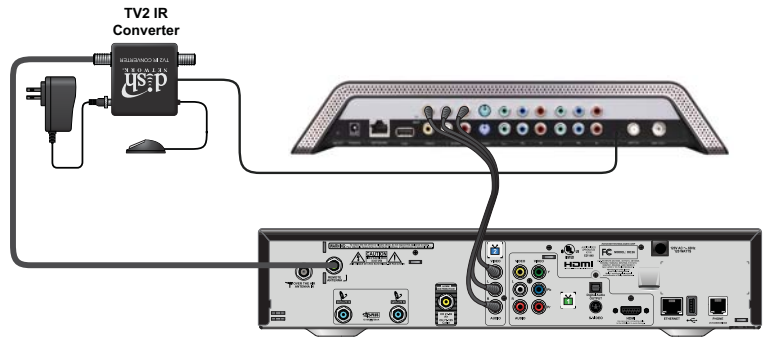


Diagram C: TV2 IR Converter used with Slingbox (TV2 in Single Mode)

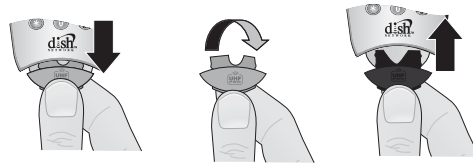


Figure 1: Flipping the remote key in IR mode



Figure 2: A/B switch inside usual battery compartment



Figure 3: UHF Pro/IR switch inside 21.0 battery compartment

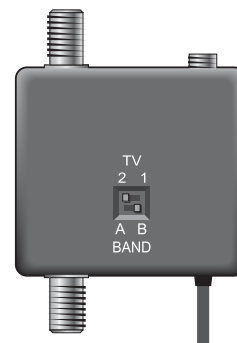


Figure 4: Back side of TV2 IR Converter; TV2 and Band B Selected