



Performance Report for: <https://www.satelliteguys.us/xen/>

Report generated: Tue, Jun 27, 2023 6:19 PM -0700
 Test Server Location: Vancouver, Canada
 Using: Chrome (Desktop) 103.0.5060.134, Lighthouse 9.6.4
 Analysis options: Adblock Plus

A	Performance 99%	Structure 93%	L. Contentful Paint 881ms	T. Blocking Time 74ms	C. Layout Shift 0
----------	---------------------------	-------------------------	-------------------------------------	---------------------------------	-----------------------------

Top Issues

IMPACT	AUDIT	
Med-High	Avoid an excessive DOM size TBT	2,538 elements
Med-Low	Serve static assets with an efficient cache policy	Potential savings of 276KB
Low	Use a Content Delivery Network (CDN)	2 resources found
Low	Eliminate render-blocking resources FCP LCP	Potential savings of 47ms
Low	Reduce unused CSS FCP LCP	Potential savings of 100KB

Page Details



Total Page Size - 1.17MB



Total Page Requests - 51



HTML JS CSS IMG Video Font Other

How does this affect me?

Today's web user expects a fast and seamless website experience. Delivering that fast experience can result in increased visits, conversions and overall happiness.

As if you didn't need more incentive, **Google has announced that they are using page speed in their ranking algorithm.**

About GTmetrix

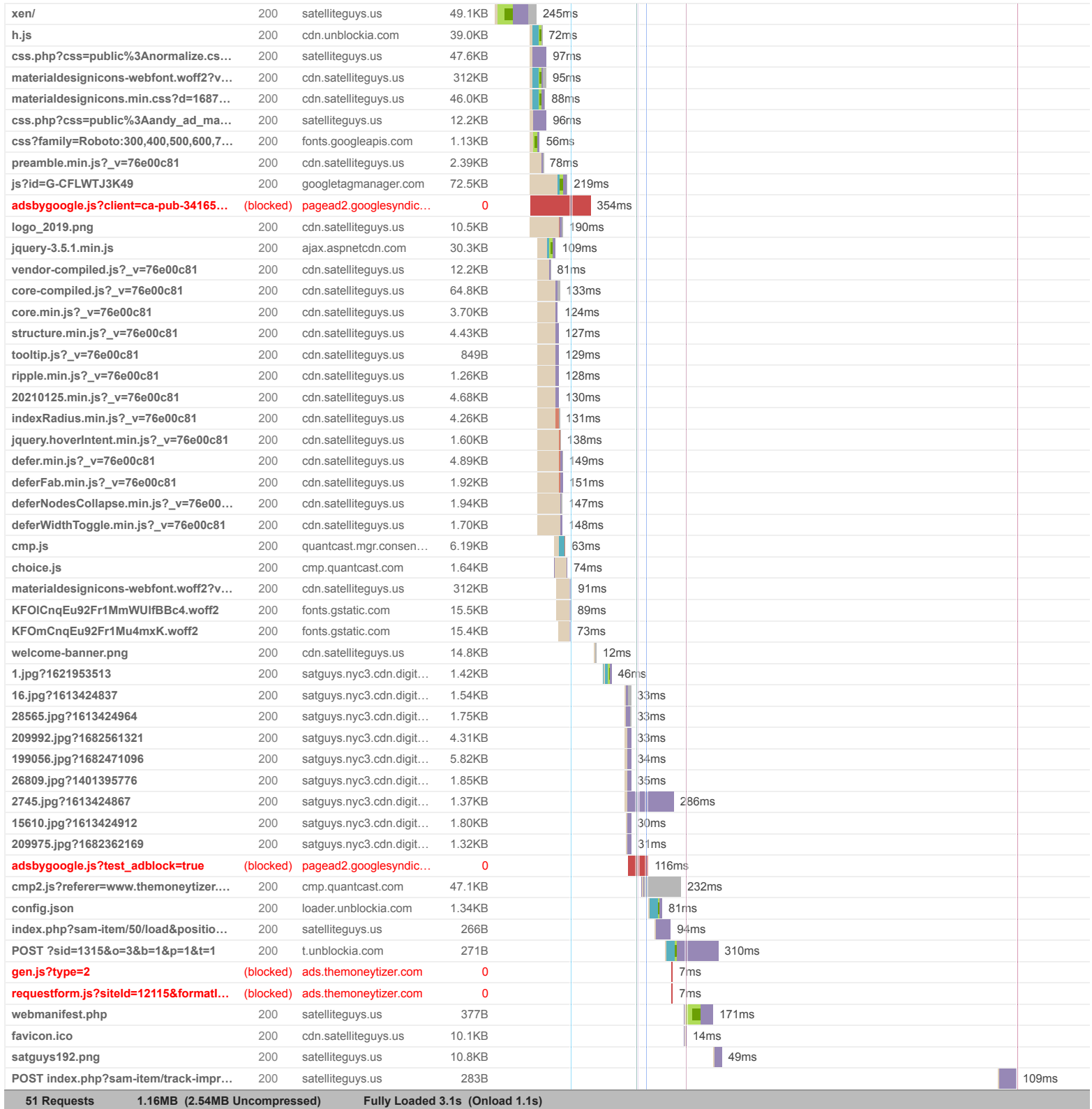
CARBON60
THE MANAGED CLOUD COMPANY

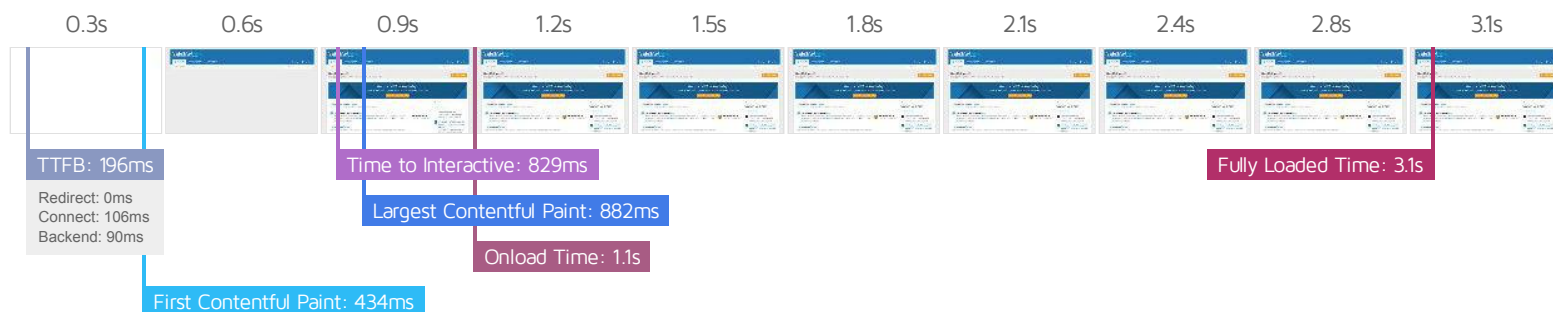
GTmetrix is developed by the good folks at **Carbon60**, a Canadian hosting company with over 27 years experience in web technology.

<https://carbon60.com/>

The waterfall chart displays the loading behaviour of your site in your selected browser. It can be used to discover simple issues such as 404's or more complex issues such as external resources blocking page rendering.

SatelliteGuys.US





Performance Metrics

First Contentful Paint How quickly content like text or images are painted onto your page. A good user experience is 0.9s or less.	Good - Nothing to do here 434ms	Time to Interactive How long it takes for your page to become fully interactive. A good user experience is 2.5s or less.	Good - Nothing to do here 828ms
Speed Index How quickly the contents of your page are visibly populated. A good user experience is 1.3s or less.	Good - Nothing to do here 648ms	Total Blocking Time How much time is blocked by scripts during your page loading process. A good user experience is 150ms or less.	Good - Nothing to do here 74ms
Largest Contentful Paint How long it takes for the largest element of content (e.g. a hero image) to be painted on your page. A good user experience is 1.2s or less.	Good - Nothing to do here 881ms	Cumulative Layout Shift How much your page's layout shifts as it loads. A good user experience is a score of 0.1 or less.	Good - Nothing to do here 0

Browser Timings

Redirect	0ms	Connect	106ms	Backend	90ms
TTFB	196ms	First Paint	434ms	DOM Int.	772ms
DOM Loaded	826ms	Onload	1.1s	Fully Loaded	3.1s

IMPACT	AUDIT	
Med-High	Avoid an excessive DOM size TBT	2,538 elements
Med-Low	Serve static assets with an efficient cache policy	Potential savings of 276KB
Low	Use a Content Delivery Network (CDN)	2 resources found
Low	Eliminate render-blocking resources FCP LCP	Potential savings of 47ms
Low	Reduce unused CSS FCP LCP	Potential savings of 100KB
Low	Reduce unused JavaScript LCP	Potential savings of 109KB
Low	Avoid enormous network payloads LCP	Total size was 1.17MB
Low	Efficiently encode images	Potential savings of 4.42KB
Low	Ensure text remains visible during webfont load FCP LCP	3 fonts found
Low	Avoid long main-thread tasks TBT	4 long tasks found
Low	Reduce JavaScript execution time TBT	157ms spent executing JavaScript
Low	Reduce initial server response time FCP LCP	Root document took 89ms
Low	Avoid serving legacy JavaScript to modern browsers TBT	Potential savings of 12.9KB
Low	Avoid non-composited animations CLS	11 animated elements found
Low	Avoid chaining critical requests FCP LCP	16 chains found
N/A	Largest Contentful Paint element LCP	1 element found
N/A	Avoid large layout shifts CLS	4 elements found
N/A	Minimize main-thread work TBT	Main-thread busy for 863ms
N/A	Reduce the impact of third-party code TBT	Total size was 142KB
N/A	User Timing marks and measures	