

Overview:  
Refit a Primestar dish with hardware to allow use of a HH motorized mount.

With minimal hardware and a few tools a primestar dish can be easily mated to many standard HH motor mounts.

This project takes approximately 2-6 hours to complete depending on how familiar you are with your tools and how far you are from the parts needed to complete the task.

Tools needed:  
Large Flat bladed screwdriver  
(2) 1/2" wrenches  
Hack saw or other steel cutting tool  
Dremmel with small cutting/sanding disc

NOTE:  
One 1/2' wrench and a 1/2" socket/ratchet can be used instead of 2 wrenches.

Dremmel can do all cutting making a hacksaw un-necessary. The dremmel is used to cut the steel bracket widening the pre-cut holes to allow for better alignment, it can also be used to cut the bracket sections faster than a hacksaw would. The holes could be widened using othyer methods such as drilling.

REVISIONS				
ZONE	REV	DESCRIPTION	DATE	APPROVED
N/A	1	INITIAL DRAWING	3/14/2003	Z

Parts List:			
Quan.	Part	Details	Store Location
1	Surplus Primestar Satellite dish		
	Assorted 5/16-18 parts		
2	1" Threaded Rods		Hardware
4	1" Hex Head Bolts	galvanized	Hardware
14	Washers	galvanized	Hardware
8	Lock Washers	galvanized	Hardware
16	Nuts	galvanized	Hardware
1	1-1/4" x 1-1/4" x 3' 18GA 90Deg. Steel Angle Bracket		
2	1-1/4 to 2" Pipe grounding clamps		Plumb/Elec
1	Can Spray-on Grey Primer	Optional	Paint
	Cost is approx. \$22 dollars US		

Note: While at the store Verify that the large Grounding clamp screws are the same size and thread (5/16"-18) as the other hardware purchased. The simplest method to verify is to poke a screw through it's packaging bag and screw a nut onto it.

Weekend Warrior Primestar  
HH-Mount Ku Retro-Fit project.

DRAWN BY: Ziploc

SIZE	FSCM NO.	DWG NO.	REV
A-L	N/A	01	1

SCALE N/A DWG NAME DISHFIT1 SHEET 1 of ?

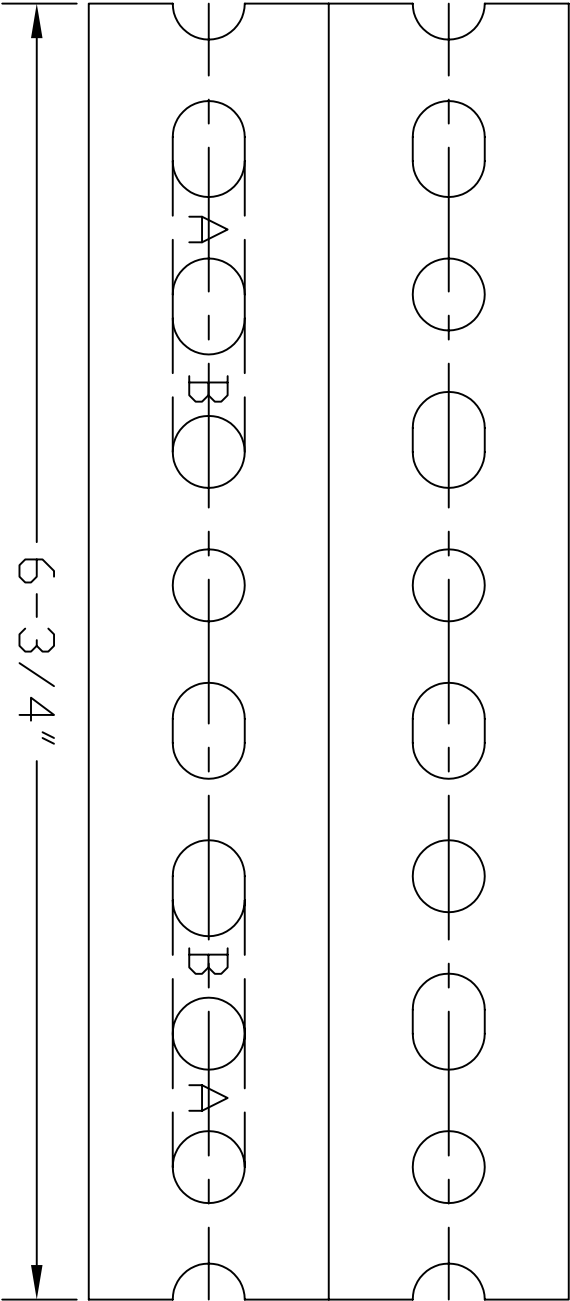
New Hardware Preparation:  
Cut 4 6-3/4" pieces off the 3 foot angle bracket. The cuts should fall through the center of the holes stamped in the material. You can use a hacksaw or Dremmel tool with sanding/cutting blade to make the cuts. You should only have to make 3 cuts.

From those four pieces you will make 2 inner and 2 outer brackets. The outer brackets will mount to the primestar dish using the existing dish bolts, lock washers and nuts. The inner brackets will mount to the outer bracket and to the clamps that will be attached to the mount pole of your HH-Mount.

The outer brackets will have two sections cut out between the pre-stamped holes near each end on one side. The inner brackets will also have two sections to be cut away on one side, but it will be removed one hole farther from the end than it was on the outer brackets.

Optional: After completing the brackets as shown here, sand them with 220 grit sandpaper. Remove the bolts from the grounding clamps and spray the brackets and grounding clamp parts with at least two coats of gray primer. This will give your project a more polished and professional appearance.

REVISIONS				
ZONE	REV	DESCRIPTION	DATE	APPROVED
N/A	1	INITIAL DRAWING	3/14/2003	Z



This is about what the brackets would look like if they were flattened. Notice there is a different hole pattern on each side. The pattern may not match exactly depending on your cuts.

I made all my cuts on the side with the 2 long two short hole pattern. Be sure to plan your cuts and mark your material before cutting.

Using a Dremmel cut and remove area 'A' for the 2 outer brackets. This will be between the first and second hole from each end on 2 of the brackets.

Using a Dremmel cut and remove area 'B' for the 2 inner brackets. This will be between the second and third hole from each end on 2 of the brackets.

Weekend Warrior Primestar  
HH-Mount Ku Retro-Fit project.

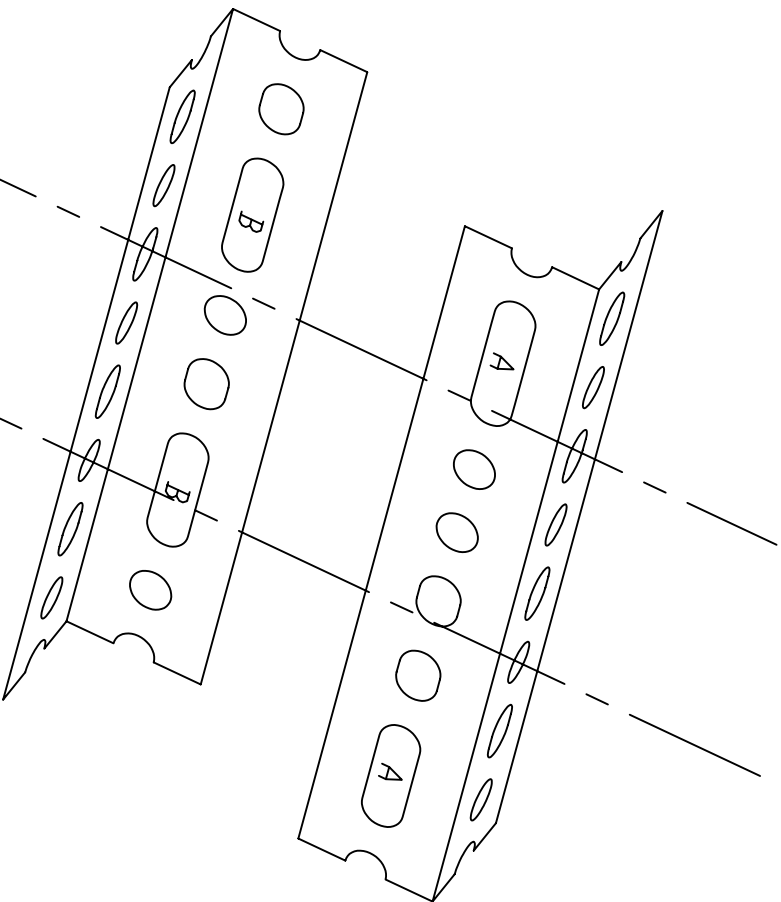
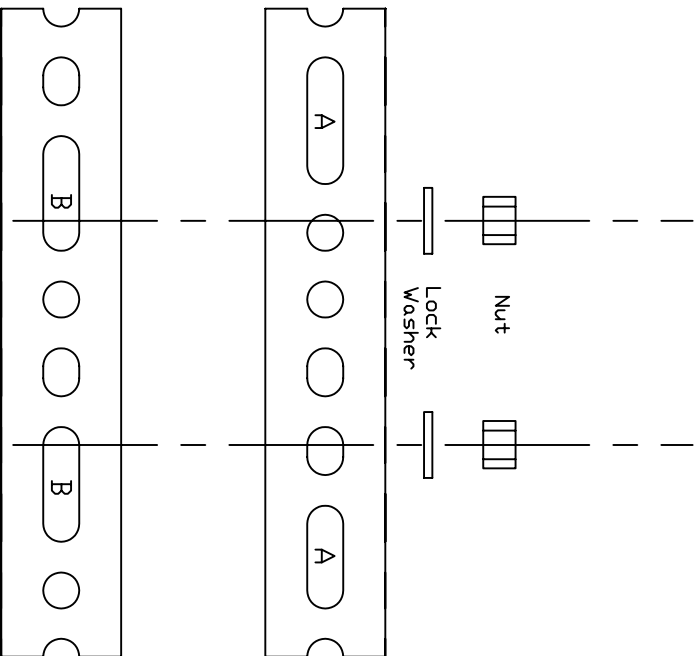
DRAWN BY: Ziploc

SIZE	FSCM NO.	DWG NO.	REV
A-L	N/A	02	1

SCALE	N/A	DWG NAME	DISHFIT2	SHEET	2 of ?
-------	-----	----------	----------	-------	--------

Final Bracket build:  
You will now build 2 mounting brackets and mount them to the Primestar dish. Each bracket will consist of:  
1 outer bracket  
1 inner bracket  
2 bolts  
2 washers  
2 lock washers  
2 nuts

Interlock the outer and inner bracket uncut sides. Align the holes as closely as possible, the ends of the brackets should match, lining up the holes exactly is not important, having the brackets parallel and even end to end is important. Connect these together using the other hoardware as shown. The third hole from each end worked best.



REVISIONS				
ZONE	REV	DESCRIPTION	DATE	APPROVED
N/A	1	INITIAL DRAWING	3/14/2003	Z

Weekend Warrior Primestar  
HH-Mount Ku Retro-Fit project.

DRAWN BY: Ziploc

SIZE	FSCM NO.	DWG NO.	REV
A-L	N/A	03	1
SCALE	N/A	DWG NAME	SHEET
		DISHFIT3	3 of ?