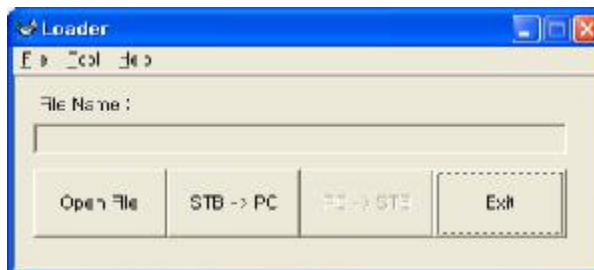


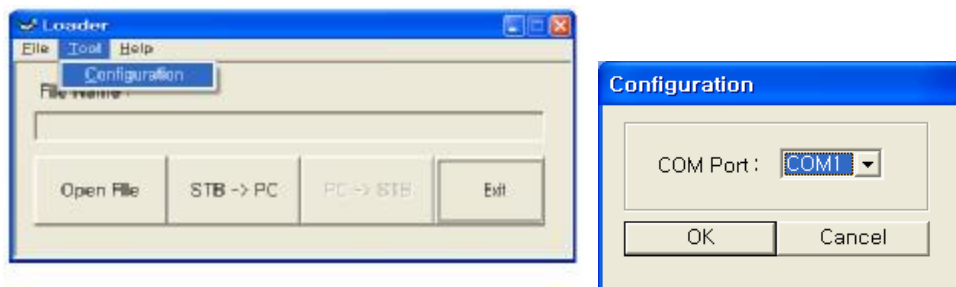
Loader User Guide

“**Loader**” can download the firmware from PC to STB.

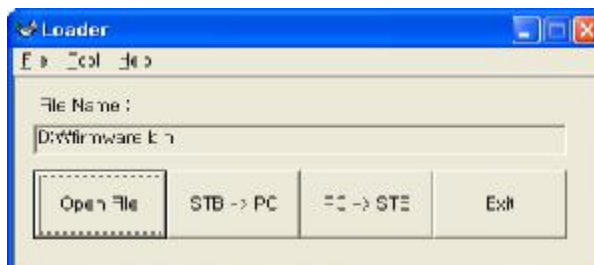
1. Install “**Loader**” to your PC.
2. **PLUG OUT YOUR STB FROM OUTLET.**
3. Connect “**NULL MODEM CABLE**” between PC and STB.
4. Run “**Loader**” on PC.



5. Run the “**Tool->Configuration**” menu and select serial port what you use.

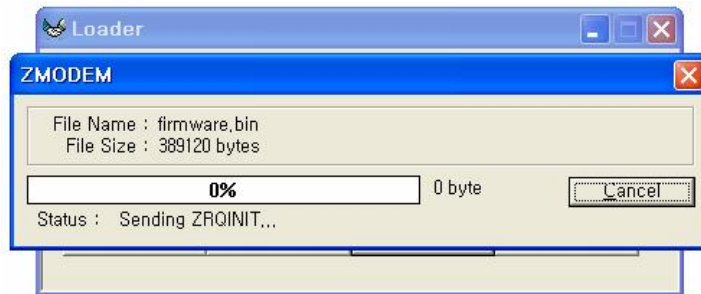


6. Press “**Open File**” button and select the file what you want to download.

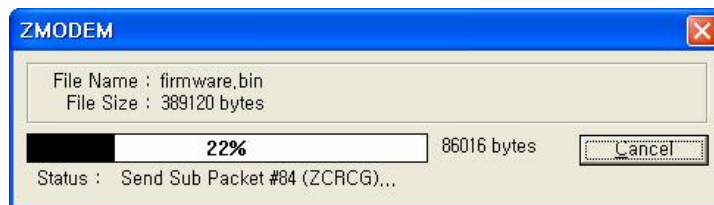


7. And then press “PC->STB” button.

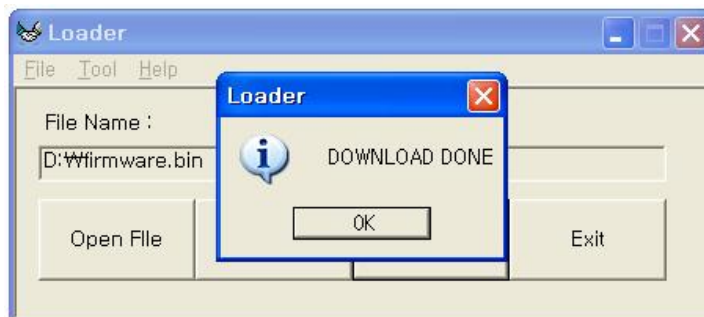
WHEN ZMODEM WINDOW IS APPEARING, PLUG IN YOUR STB.



8. Then selected file will download from PC to STB.



9. When download is complete, you can see below message.



**When you see this dialog on PC, STB will start to write flash memory.
Please wait until STB automatically reboot.**