

How to retain your satellite list and channels while updating the firmware on your MicroHD

NOTE: Updates to the firmware can improve the performance of your MicroHD, but directions must be followed precisely in order to avoid system boot failures. Be advised that the instructions below will take approximately 10 – 15 minutes to complete. As a steady source of power is needed, do not attempt updating during times of possible outages (strong storms, peak electrical use times such as the middle of the day in a very hot summer, etc.). If you are using USALS with your motor, write down your latitude and longitude on a piece of paper (or on a computer/mobile device) before beginning this process as these will be deleted after the firmware update.

1. Download and unzip the latest firmware update file. Next, open the unzipped folder, and copy and save the update (.abs file) onto your USB drive on your computer. After the file is saved, properly close out and remove the USB drive. Skip this step and steps 8 - 13 if updating by satellite and instead follow the video instructions here: http://youtu.be/_OOib2g9Q_Y



Illustration 1: You may use a simple USB drive like this for these instructions (image by sweetclipart.com)

2. Insert the USB drive into the MicroHD rear panel USB port and wait for it to be recognized.



Illustration 2: The USB 2.0 port is labeled on the back of the MicroHD.

Saving your current settings (Satellite and Channel lists)

3. Press the Menu key then press the Down Navigation Arrow key to select and highlight the Tools Menu icon (looks like a suitcase).
4. Press the List/OK key to access the Tools Menu screen.

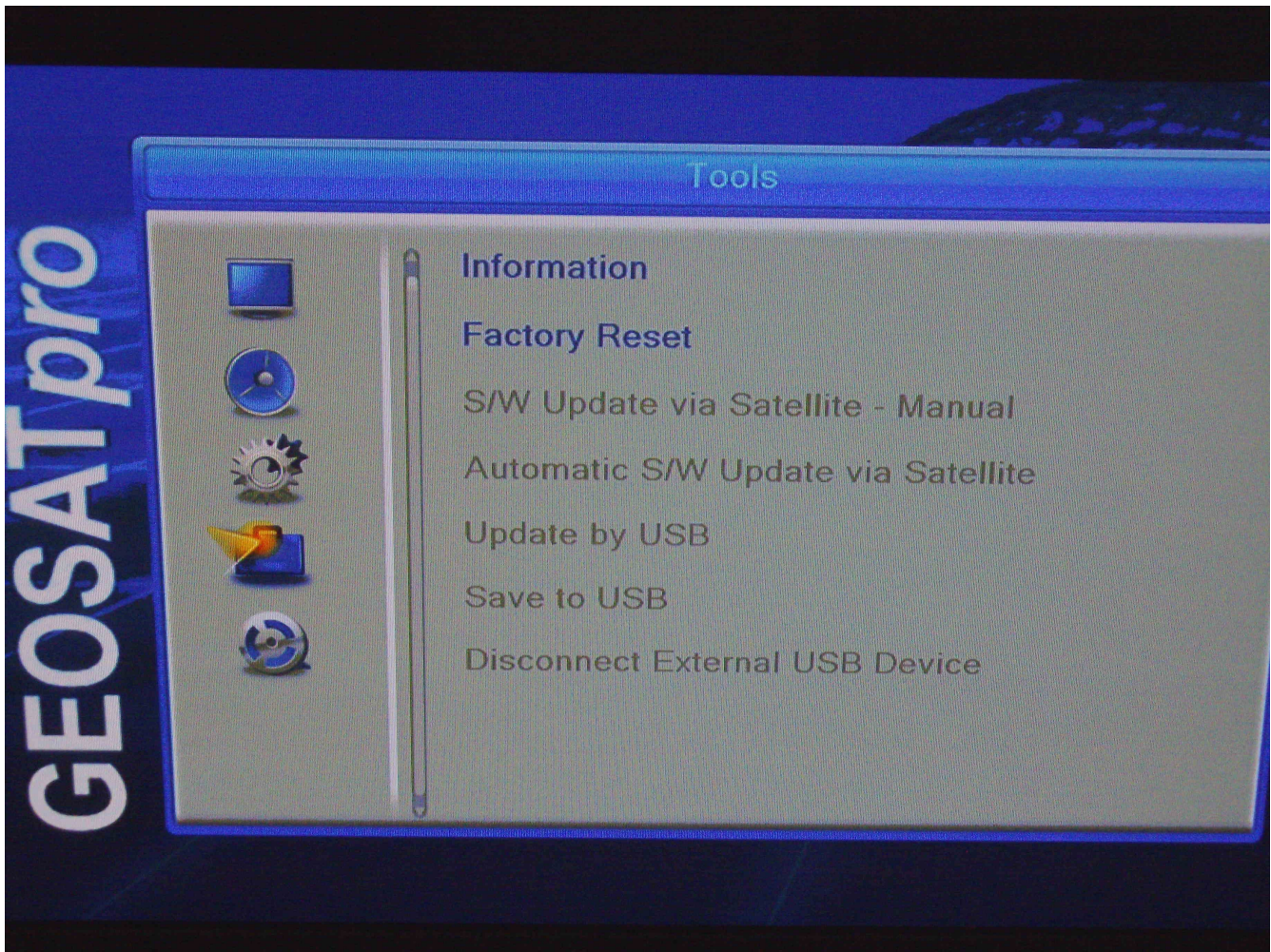


Illustration 3: The Tools Menu. (Photo courtesy of Iceberg @ SatelliteGuys.us)

5. Press the Up or Down Navigation Arrow key to Select "Save to USB." Press OK/List.
6. Select "userdb" under Save Mode using the Left or Right Navigation Arrow and then select "Start" to save the MicroHD User Data Base (.udf) file to the USB drive. This will only take a second or two to complete.
7. Press Exit on the remote.

Updating firmware by USB drive

8. Select "Update by USB" in the Tools menu by pressing the Up Navigation Arrow and pressing OK/List. A video for steps 8 – 13 is shown here: http://youtu.be/0G_1DRndtOE
9. Using the Navigation Arrow buttons, select "Allcode" on line one ("Upgrade Mode") and on line two ("Upgrade File,") choose the .abs file on your USB drive you just saved. Then go to

line three and select “Start” (press the OK/List button). Press “Yes” on the warning message. Depending on the size of the update, this may take a few seconds up to a few minutes. Do not worry if it pauses at around 99% for quite some time – this is also normal. Wait until the process has completed before continuing.

10. The machine should reboot automatically. If not, press Exit on the remote in order to proceed to the next step.
11. Go to the Tools menu, select "Factory Reset" and select "Yes." The screen will quickly flash and return to the Tools menu.
12. Physically unplug your receiver for 10 seconds (you don't have to push “power”).
13. Reconnect the receiver and allow it to boot normally. Wait until it rediscovers your USB drive before continuing.



Illustration 4: Remember that pushing "Power" is not the same as physically disconnecting the receiver. Get into the habit of disconnecting your power supply anytime you make changes to your satellite setup.

Restoring your settings (Satellite and Channel lists) – Optional step

14. If not already in the menu screen, press the Menu button. Then, press the Down Navigation Arrow button to select and highlight the Tools Menu icon (the suitcase).
15. Press the List/OK button to access the Tools Menu screen.
16. Press the Up or Down Navigation Arrow button to Select "Update by USB." Press List/OK.
17. With line 1, “Upgrade Mode” highlighted, press the Left Navigation Arrow key to select “userdb.”
18. Press the Down Navigation Arrow button to highlight line 2, “Upgrade File.”
19. Press the Right Navigation Arrow button to select the desired User Data Base (.udf) file.
Example: USERDB.udf. (Warning: make sure that your .udf file was made with firmware version 0.13 (Nov. 14, 2012 firmware) or newer. If you're not sure, cancel the restore as shown in step 21).
20. Press the Down Navigation Arrow button to highlight “Start” and press the OK/List button.

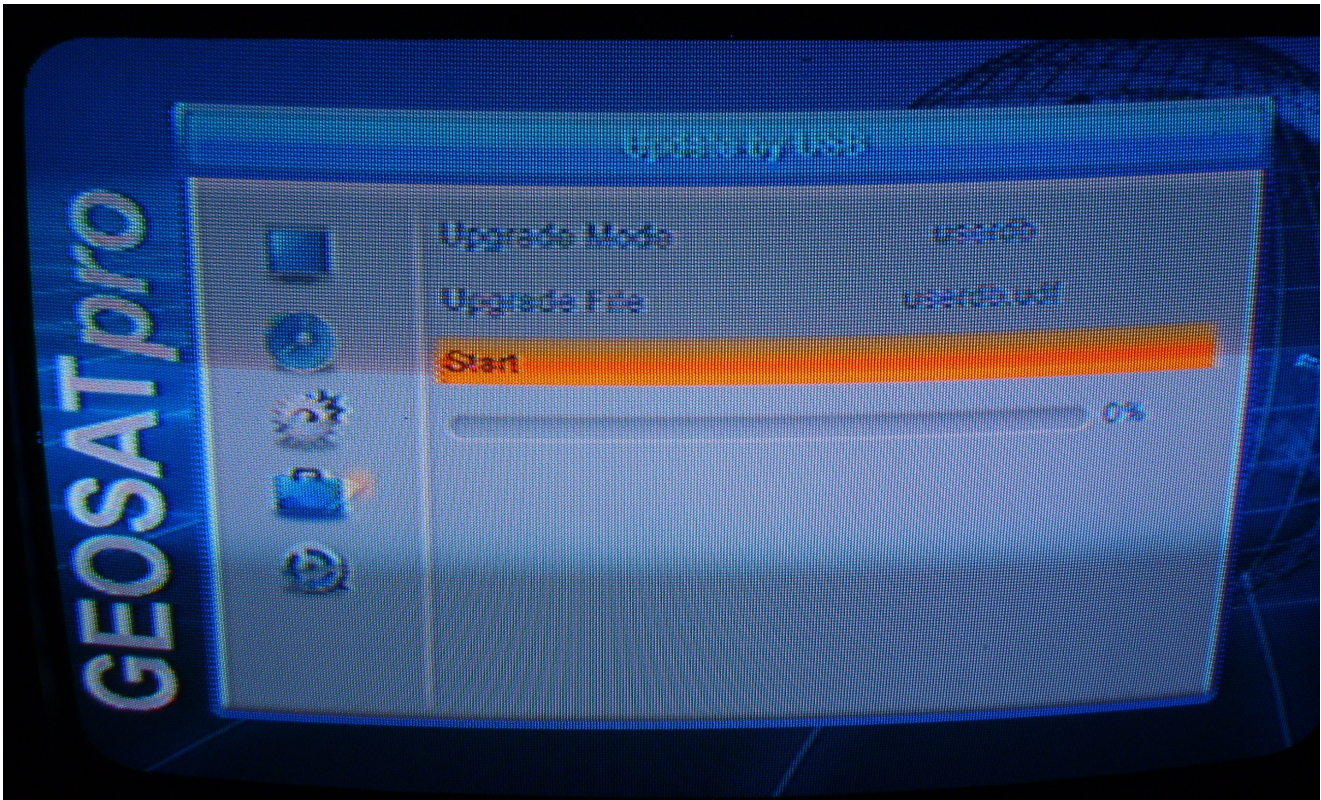


Illustration 5: Restoring your channel and satellite lists is simple! (Photo by northgeorgia @ SatelliteGuys.us)

21. When the warning screen appears, select “Yes.” (This is because you would like to load your old User Data Base. You can also select “No” to escape/cancel without updating the receiver).
22. The update is now in process and cannot be interrupted. During this process, it is critical that the power is not interrupted or shut off. A power interruption may corrupt the User Data Base file transfer and cause the receiver to be inoperable.
23. Once the Update by USB is complete (status bar at 100%), the MicroHD power will reboot automatically.
24. After rebooting, physically disconnect the power supply for 10 seconds (you don't need to push “power”), then reconnect it.

Restoring your USALS settings and resuming normal use – for USALS setups only

25. If you do not use a motorized USALS setup, you may skip this section and begin using your MicroHD immediately. If your system is motorized with USALS, the USALS installation location's Longitude and Latitude will need to be re-entered. First, press “Menu.”
26. Select the Installation icon (picture of the satellite dish) and press OK/List.
27. Press the Down Navigation Arrow to select Line 2, “Antenna Setup” and press OK/List.
28. Press OK/List on “Motor/Switch Setting” and wait for the “Moving dish” message to disappear (or press “Exit”). Press the Down Navigation Arrow 5 times to “Motor Type USALS” and

press OK/List.

29. Re-enter your Latitude and Longitude Coordinates. A smaller “moving dish” message will appear as it navigates to the chosen satellite.
30. The latest firmware has been installed with your old channel and satellite lists retained. You may now use the MicroHD normally.

For further support of the MicroHD, visit the FTA Receiver Support Forum free of charge at <http://www.satelliteguys.us/forums/262-FTA-Receiver-Support>