

12. Attach the azimuth adjusting tube to the bracket on the rib using a 5/16" x 1-3/4" bolt, three 5/16" flatwashers and a 5/16" lock nut (included on bracket) (Ref: photo 16).
13. Slide the azimuth tube inside the azimuth adjuster and attach the adjuster to the polar "L", using the hardware supplied. Tighten the bolt until it is snug, then tighten the nut to the polar "L" so as to lock the bolt into the polar "L". This will prevent the bolt from backing out. (Ref: photo 17 & 18)
14. Attach the end of the safety cable, with the "eye", to the outside bolt holding the lower rib to the back plate. (Ref: Fig. 3) This is accomplished by removing the nut and bolt from the rib and adding a 5/16" washer over the bolt. Insert bolt through the eye of the cable and one more 5/16" washer, and install as before. (be sure to reinstall the original washer next to the nut). Retighten the nut and bolt.

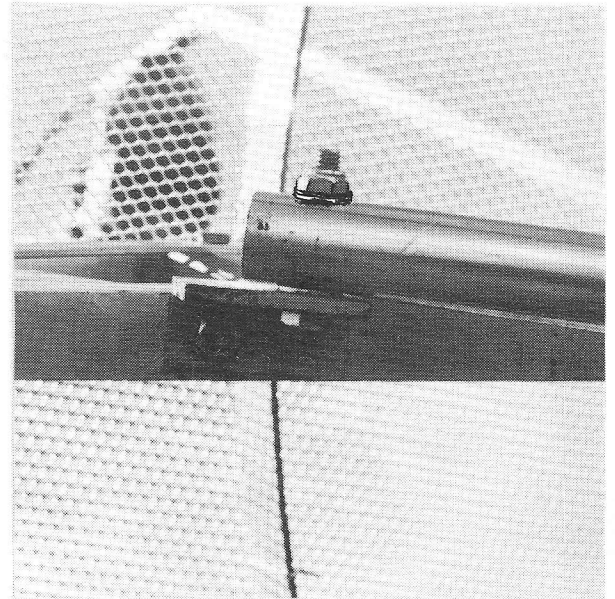


Photo 16

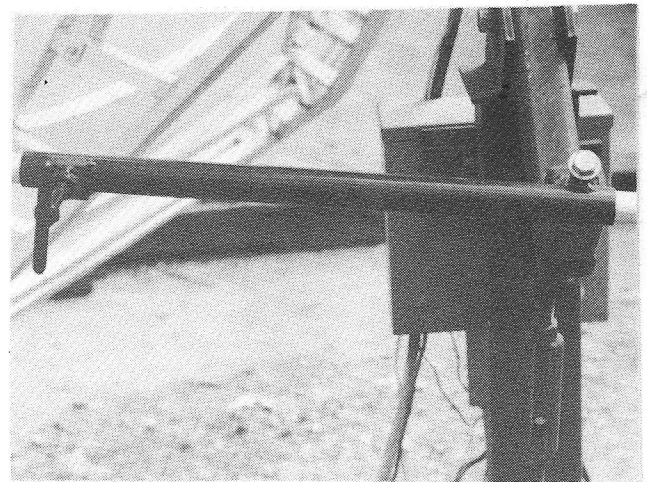


Photo 17

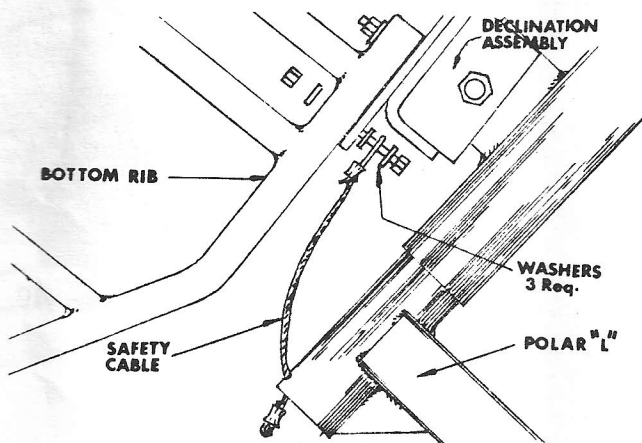


Fig. 3

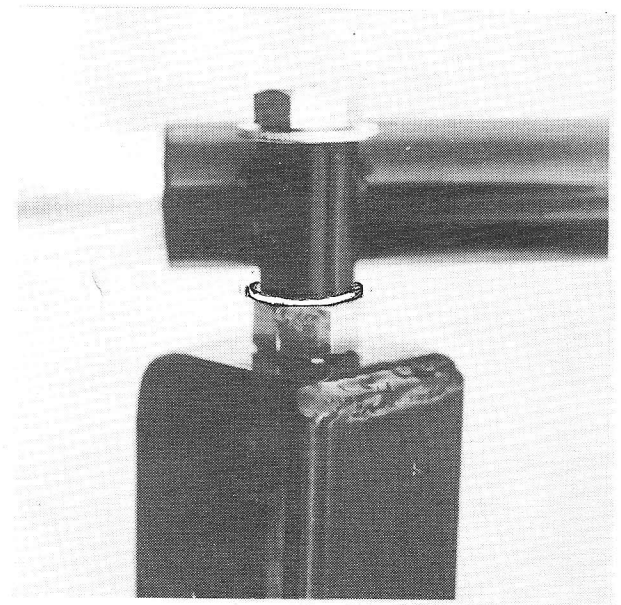


Photo 18