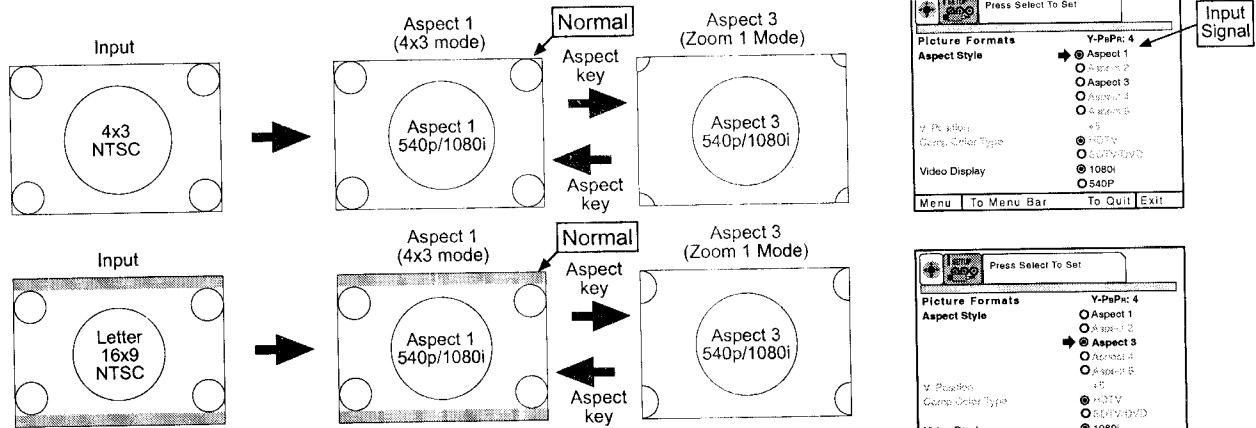


# SET UP

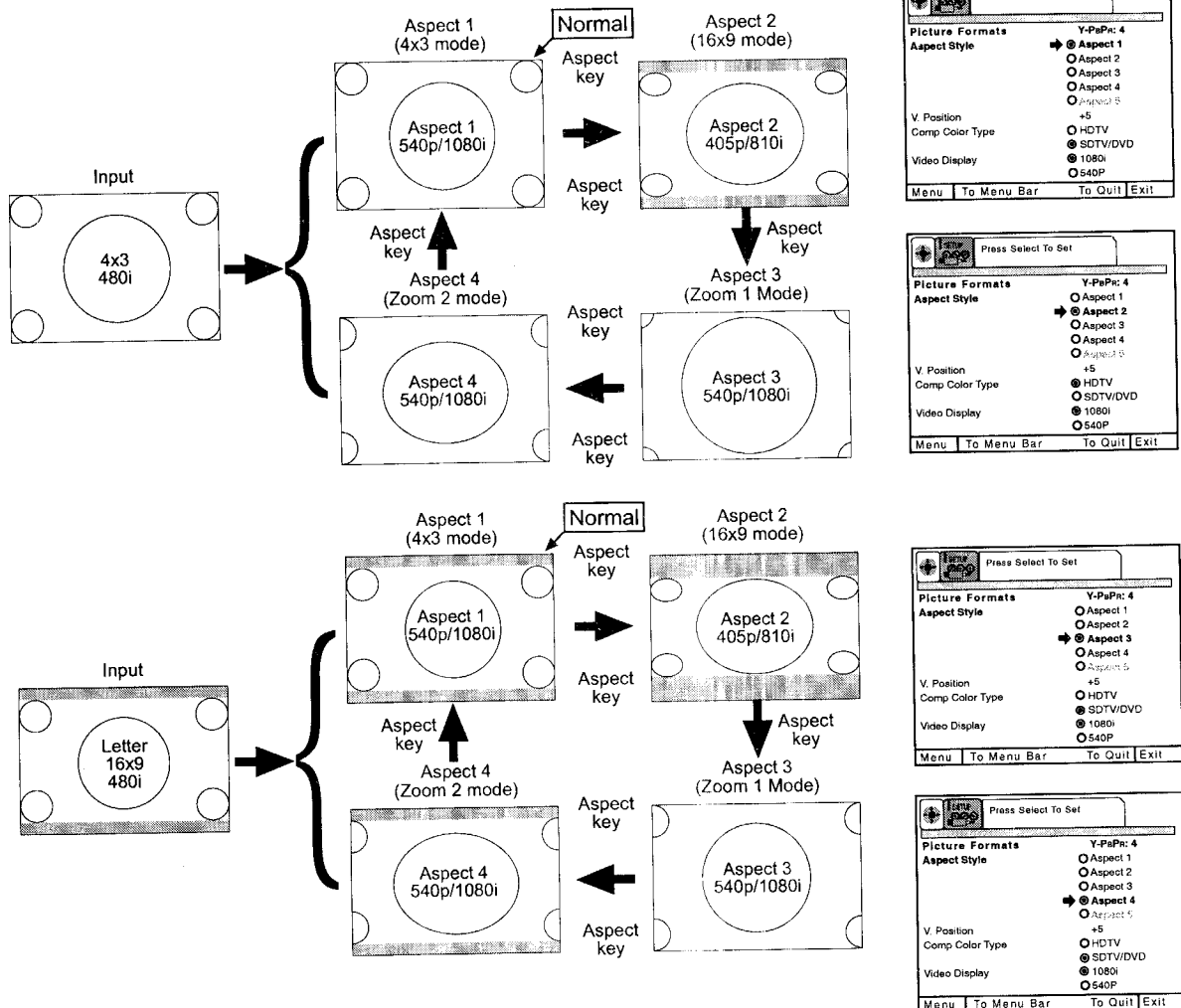
## Picture Formats

Depending on the input signal, the PICTURE FORMAT aspect ration allows you to adjust the image through the following options.

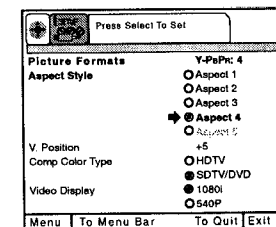
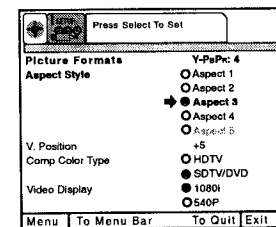
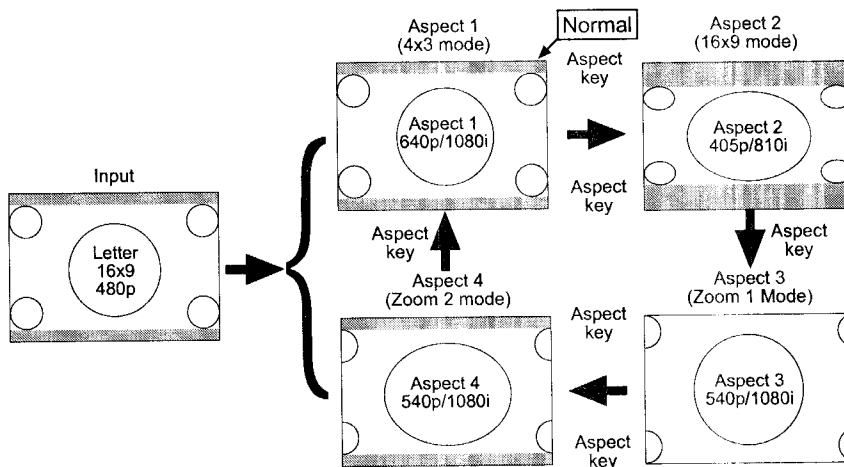
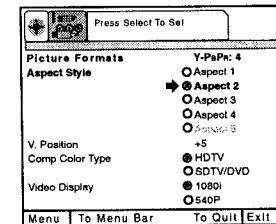
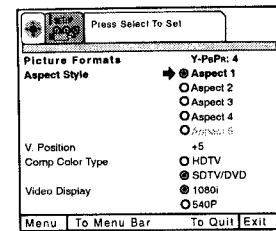
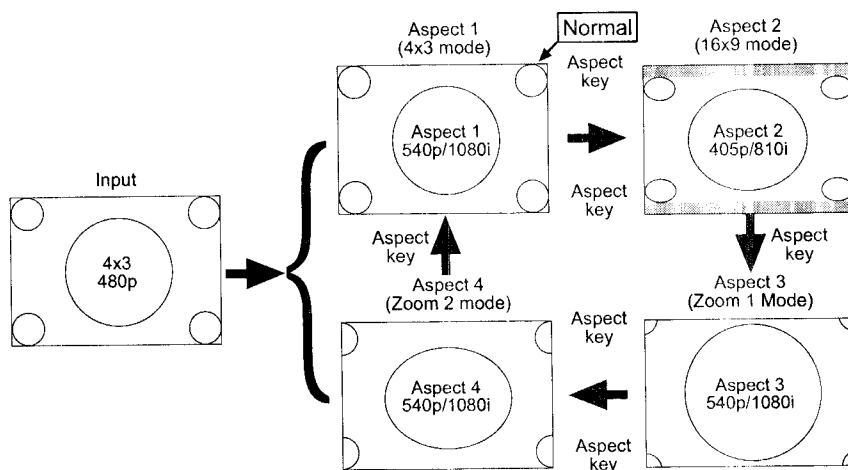
(1) NTSC Input - ANT A/B, VID1 ~ VID5, - 4x3 Format



(2) 480i Input - ANT A/B, Input 4/5 (Component) - 4x3 Format



## (3) 480p Input - Input 4/5 (Component) - 4x3 Format



### Comp Color Type

The Comp Color Type function allows you to automatically change tint and color coordinate for DTV Programs.

HDTV - High Definition Television - Use for High Vision Signal Y-PbPr from HDTV Set-Top Box.

SDTV /DVD - Standard Definition Television or Digital Video Disc Y-CbCr such as DVD (Digital Video Disc Player).

### Video Display

The Video Display feature allows you to display 1080i or 540P signal mode. This feature is not available if Aspect 5 (1080i through mode) is selected.

- NOTE:**
1. If Comp Color Type is set improperly (does not match actual input signal), the color and tint of the main picture will be abnormal.
  2. You must be tuned to VIDEO: 4 or 5 input and have a component hooked up to the Y-PbPr input jacks to access all Picture Formats menu.
  3. All settings will affect only the component input you are currently viewing. If you are using both sets of component input jacks, be sure to set the Picture Formats feature for both inputs (set VIDEO:4 AND VIDEO:5).
  4. Aspect 5 is for 1080i signal format only. Selecting Aspect 5 allows the 1080i signals to appear on the TV screen as the broadcaster sends them. Aspect 5 does not allow the 1080i to go to the TV's internal flex converter.
  5. Aspect 5 must be selected from the OSD menu at all times. The aspect button on the remote control will skip the Aspect 5 feature.
  6. Using Aspect 5 will shorten the life of the PRT guns due to no gray panel at the top and bottom of the TV screen.