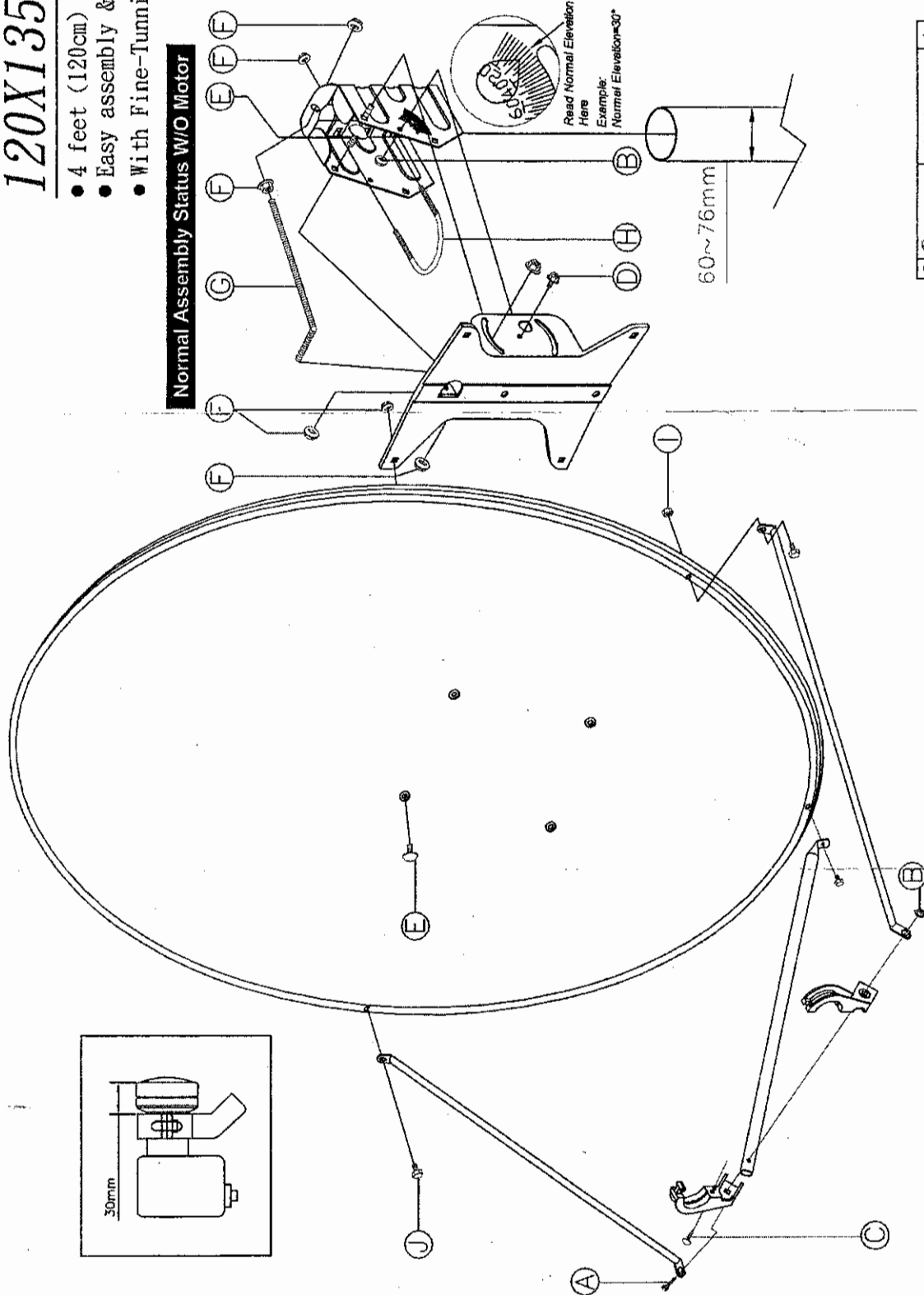
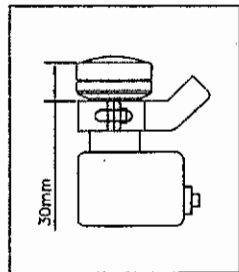


120X135CM DISH

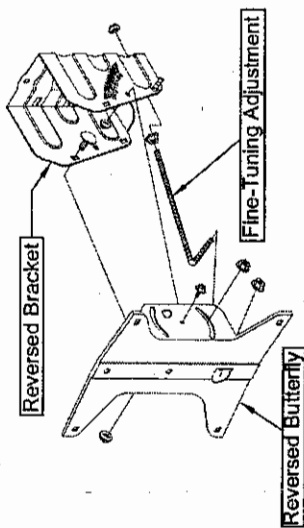
- 4 feet (120cm) offset antenna with rolled lips edges.
- Easy assembly & strong Az/EI mount.
- With Fine-Tuning Design for accurate Angle SETUP.



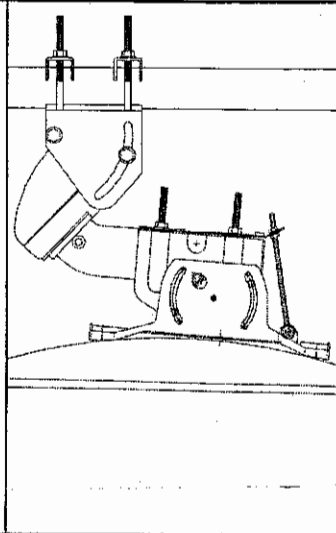
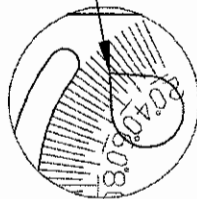
Normal Assembly Status W/O Motor

Assembly for Use with Top Loading HH DiSeqc Motor

Reverse the Bracket & Butterfly to assemble with Top Loading HH DiSeqc Motor

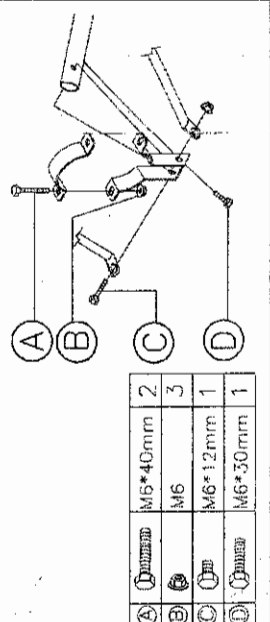


Corrected Angle Setting for Reversed Bracket
To set for correct elevation angle, subtract 4.50 degrees from the displayed elevation angle. Example: if displayed angle is 34.50 degrees, the dish is actually aimed at 30 degrees.



1	M6*40mm	1
2	M6 HEX NUT	3
3	M5*25mm	1
4	M6*12mm	2
5	M8*15mm	8
6	M8 HEX NUT	15
7	M8*190mm	1
8	M8*85mm	2
9	M6 HEX NUT	3
10	M6*12mm	3

Special Order Needed- optional C-Band LNBF clamp



Normal Clamp for Ku-Band LNBF

- Ø30mm is enclosed.
- Ø23.5mm or Ø40mm Option available.

