

# TVweek

## Ku-band

## By Interest

WS	T3	F3	G1	F1	F5
WESTAR 5 122.5°W CNN feed	TELSTAR 303 125°W	SATCOM 3R 131°W QVC Shopping Network	GALAXY 1 134°W Comedy Channel	SATCOM 1R 139°W Family Channel (West)	SATCOM 5 143°W
University Net Dr. Gene Scott		The Learning Channel	Nashville Network (5.58-5.76 N)	KUSA-ABC Denver	
ATS Sky Store	college sports	Trinity Broadcasting	WGN Chicago		
National College TV		Bravo (6.2-6.8 W) RAI	Disney Channel (East)	KDNC-NBC Denver	
hockey feeds			Showtime (East)	Pacific Sports Network	
Galavision feed		CNBC		KMGH-CBS Denver	
CBS feed (6.7)		Univision (Spanish)	CNN	Prime Ticket Sports FNN	
		JC Penney Shop Channel	CNN Headline News ESPN	NBC Network o/s	
		USA (West)	The Movie Channel (East)	HSE Hit Video USA	
pro sports feeds		Score FNN	Family Channel (East)	Sunshine Net.	
		American Movie Classics, A/N	Arts & Entertainment	KRMA-PBS KUBO Denver	
CTNA hockey feed		HBO (West)	Country Music TV (5.58-5.76 N)		
		VISN Interfaith	The Movie Channel (West)	KWGN-IND Denver	
		Movietime promos	WWOR-NY Secaucus, NJ		
		The Travel Channel	Showtime (West)	Three Angels	
RFD-TV		Lifetime (West)	Inspirational Net (5.58-5.76 N)	Prime Sports Network feed	
Group W recurring feed	FOX (East) (6.2-6.8 W)	TNT	TBS Atlanta	Prime Sports Network feed	
		Request TV 1	Cinemax (East)		
MidWest SportsChannel		BET (6.8-7.38 N)	Galavision (Spanish)	WGN-Chicago	
college sports feeds			USA (East)		
			Home Shopping Club II	Discovery Channel VSM	
CNN feed	FOX (West) (6.2-6.8 W)	Cinemax (West)	HBO (East)		
college & pro sports feeds		Request TV 2	Disney Channel (West)	Prime Network	Alaska Satellite TV (5.8 W)

## TRANSPONDERS

K-2 81°W	K-1 85°W	SBS4 91°W	SBS3 95°W	GSTAR 1 103°W	ANIK C-1 107.3°W
1			o/v		Musique Plus
2		Corus o/v	o/v		
3	NBC (East)	o/v			Atlantic Satellite Net.
4		Ford Com. o/v			
5	NBC feed				
6	Corus news feeds		Hi-Net Comcast BMAC		Super ECRAN
7	NBC (Pacific)				
8	Cyclotat. o/v				
9					
10		AI/TO Satellite TV Network	Hi-Net Comcast BMAC		
11	NBC Skyway (Central)	Kodak o/v		Penn. St./ SCFL	
12	Corus/WA feed	K1 ID o/v	o/v	Hi-Net Comcast BMAC	Radio Quebec
13					o/v
14			news feeds		Radio Quebec
15	NBC/Sky Com	Computerland; Chrysler feeds	o/v		Canal Famille
16	Corus/Hubcom		o/v		
17			Hi-Net Comcast BMAC		Acces Network
18					TVO (French)
19	NBC/NY Skyway	DYN o/v		CBS newfeed	TVO (English)
20			ALI-ABA o/v	PSN, NTU Net.	
21				o/v	The Family Channel Oak
22		Texas Inst. BMAC o/v			Home Shopper's Club (French)
23	NBC feed	o/v			SuperChannel (w)
24	o/v			PBS Telecom o/v	TV Ontario Legislature
25					Canada Home Shopper's Net
26					YTV
27	NBC feed			o/v	
28	AT&T SkyNet BMAC	o/v		CNN newsource	
29					The Family Channel Oak
30					Knowledge Net. 1
31	NBC/Sky Com	o/v		NTU/ AMICEE	
32		ALN o/v		o/v news, PU, FCN DPSN	Canada Home Shopper's Club

### EDUCATION

Discovery	G1/22
The Learning Channel	F3/02
Lifetime (W)	F3+17
Lifetime (E)	G3+20
Mind Ext. University	G3/11
PBS (feed A)	W4+15
PBS (feed B)	W4/17
PBS (feed C)	W4+21
PBS (feed D)	W4/23
SCOLA	S2/19
(Educational programs can be found on Disney, Arts & Entertainment, and Bravo.)	

### NETWORKS

ABC (E)	T1/10
ABC (W)	T2/10
CBC North (Atlantic)	AD/19
CBC North (Pacific)	AD/11
CBS-KMGH (M)	F1+06
CBS-WBBM (E)	F2+02
FOX (E)	T3/18
FOX (W)	T3/23
NBC (E)	F1+06
NBC-KCNC (M)	F1+04
NBC-WXIA (E)	F2+12
PBS (A feed)	W4+15
PBS (B feed)	W4/17
PBS (C feed)	W4+21
PBS (D feed)	W4/23

### RELIGION

ACTS	G3/07
ATS	W5/03
Alternate View Network	F3/12
Baptist Television Net.	S1/21
Catholic Television Network	W5/13
Dr. Gene Scott	W5/02
Eternal Word TV Network	G3/10
Family Net	G3/23
Keystone	W4/09
Inspirational	G1/17
National Jewish TV	F4/01
NCN & Shepherd's Chapel	W4/06
Three Angels Broadcasting	F1/16
Trinity Broadcasting	F3/03
VISN Interfaith	F3/14

### SHOPPING NETWORKS

America's Value Network	F4/09
Home Shopping Club	G3/08
Home Shop Spree	F2/11
QVC Network	F3/01
QVC Network	G3/09
Sat Market USA	S1/21
Shop-At-Home	F4/15
JC Penney Shop	F3/08
Sky Store TVRO	W5/03
Travel Channel	F3/16
Video Shop Mall	G1/22

### INTERNATIONAL

CBC (French)	AD/15
Galavision (Spanish)	G1/20
HBC Telemundo (Spanish)	S2/09
NHK Feed	G2/11
RAI Feed (Italian)	F3/04
TVS (French)	A2/17
Univision (Spanish)	F3/07
XEW	M1/14
XHDF	M1/08
XHGC	M1/10
XHMT	M1/02

### NEWS, BUSINESS & INFORMATION

All News Channel	F2+07
CNBC	F3/06
CNN Headline News	G1+08
Cable News Network	G1+07
Cable News Network feed	G2/01
Cable News Network feed	W5/01
Canadian House of Commons: (English)	AD/24
(French)	AD/16
C-Span 1 (House)	G3/24
C-Span 2 (Senate)	G3/14
Financial News Network	F3+11
Financial News Network	F1+07
NASA	F2/13
RAI Feed (Italian)	F3/04
RFD-TV	W5/17
SCOLA	S2/19
Sports News Net	F4/02
Weather Now	A2/11
The Weather Channel	G3+13

### MOVIES

AMC	F3+12
Bravo	F3/04
Cinemax (E)	G1+19
Cinemax (W)	F3+23
The Disney Channel (E)	G1+04
The Disney Channel (W)	G1+24
Home Box Office (E)	G1+23
Home Box Office (W)	F3+13
The Movie Channel (E)	G1+10
The Movie Channel (W)	G1+14
The Nostalgia Channel	F4/21
Showtime (E)	G1+05
Showtime (W)	G1+16
StarDust	G2+02
StarOne	S3+19
TNT	F3+18
Viewer's Choice 1 PPV	G3+21
Viewer's Choice 2 PPV	G3+16

## Key

**I** : in the clear **•** : Subscription **■** : Not sold to satellite market  
**st** : Stereo **W** : Wide **o/c** : Occasionally Clear  
**M** : Monaural **N** : Narrow **o/v** : Occasional Video  
**TIME NOTED** : Times on this page are for Eastern zone  
**AUDIO** : On video channels 6.8 unless otherwise indicated  
**VC II** : All subscription channels use this decoder unless noted otherwise  
**POLARITY** : All Satcom and Telstar satellites use horizontal polarity on even numbered channels and vertical polarity on odd numbered channels. All other satellites use the opposite format.

## Next Week...

We preview a double dose of laughter as HA! TV competes with The Comedy Channel for the last laugh in next week's **Satellite TV Week**—choice reading for the television of choice.

F3/15	PBS (st) Educational	PBSA	PBSA	W4/15	SKY STORE TVRO SHOP	WS/03	USA NETWORK (st)	East West	USAE	G1+21
W5/20	"In the clear" Sat. & Sun. until 8 p.m.	PBSA	PBSA	W4/17	1st & 3rd Tues. 9:30 p.m.	F4/11	Variety, Sports, Movies		USAW	F3+10
MUCH	AD/06	PBSB	PBSB	W4/21	SPORTSCHANNEL	F4/09	VIDEO HTS-1 (st)			G3+15
MTVE	G3+17	PBSB	PBSB	W4/23	America Chicago Ohio Florida New York New England Philadelphia	F4/16	Music videoclips			G1/22
A2/15	J.C. PENNEY SHOP	PBSB	PBSB	F3/05	SCHE	F4/14	VIDEO SHOPPING MALL			
	PLAYBOY At Night 8 p.m. to 5 a.m.	PLAY	PLAY	F4+24		F4+07	3 a.m.-9 a.m.			
F2/13	PRIME NETWORK	PRMN	PRMN	F1+24	SPORTS NEWS NETWORK	F4/02	VIEWER'S CHOICE PPV	VC1	G3+21	
NASH	G1/02	PRIME SPORTS NORTHWEST	PTS	F1+22	24 hour sports updates	T1/13	VISION/TV	VC2	G3+16	
W4/06	PRIME TICKET SPORTS	PTS	PTS	F1+07	SPORTS NEWS SATELLITE	G2+02	Religious & Family Programs			A2/15
W5/04	QVC SHOPPING NETWORK	QVC	QVC	F3/01	Daily 10:15 & 1:15 a.m. M-F 4 p.m./Sat. & Sun. 5 p.m.	STAR	Daily 11:55 a.m.-3:05 a.m.			F3/14
	RAI Italian, variety, M-F 6-8 p.m., Sat. 4-5 p.m., Sun. 9 a.m.-2 p.m.	RAI	RAI	F3/04	STARON ENTERTAINMENT	STRN	M-F 10:30 a.m.-2 a.m. Sun-Sat. 8 a.m.-2 a.m.	WABC	F2+04	
F4/02	RENDEZVOUS PPV 8 p.m.-4 a.m. (Videopal only)	REND	REND	S2+03	Movies	S3+19	Sun-Sat. 8 a.m.-2 a.m.	WBDM	F2+02	
NBC	F1/08	RFD-TV	RFD	W5/17	SUNSHINE NETWORK Sports	SUN	WABC CBS-Chicago	WBDM	F2+02	
NESH	F4/13	SATELLITE MARKET USA	S1/21		TBS (st) Atlanta-Independent Braves, Hawks	TBS	WEATHER CHANNEL, THE			G3+13
G2/11	SCOLA-Creighton University Foreign news in language of origin. School year only.	S2/19			THREE ANGELS	F1/18	WEATHER NOW Canadian Weather in English and French			A2/11
G3+19	SCORE Sports Sat-Sun. 2 p.m. to 5:30 a.m.	FNN	F3/11		TNT Movies	F3+18	WGN-TV-IND. Chicago Cubs, Bulls, White Sox	WGN	G1+03	
G3+22	SHOP-AT-HOME	F4/15			TRAVEL CHANNEL	TRAV	WPX IND-NY NY Yankees	WPX	S3+09	
F4/21	SHOWTIME (st)	East West	SHOE SHOW	G1+05	TRINITY BROADCASTING Religious	TRIN	WSBK IND-Boston Boston Red Sox, Bruins	WSBK	S3+03	
F1+05	SILENT NETWORK, THE Programming for hearing impaired. Sat. & Thur.	F4/15			TUXEDO NETWORK	TUXX	WVOR IND-ND NY Mets, Knicks, Rangers	WVOR	G1+15	
PASS	S3+21				Adult 7:30 p.m.-4 a.m.	A2/17	WXIA NBC-Atlanta	WXIA	F2+12	
					TVS QUEBEC (French) Sun/Sat. 1:30-12 p.m. M-F 1-12 p.m.	W3/02	XEW Mexico City		M1/14	
					UNIVERSITY NETWORK Religious, Dr. Gene Scott	W3/02	XHDF Mexico City		M1/08	
					UNIVISION Spanish	UNIV	XHGC Mexico City		M1/10	
						F3/07	XHMT Mexico City		M1/02	



# Choice Services

# satellite

## C-band

	S2 SPACENET 2 89°W	F2 SATCOM 2R 72°W	G2 GALAXY 2 74°W	F4 SATCOM 4 82°W	T2 TELSTAR 302 85°W	S3 SPACENET 3 87°W	G3 GALAXY 3 93°W	T1 TELSTAR 301 96°W	W4 WESTAR 4 99°W	AD ANIK D1 104.5°W	A2 ANIK D2 110.5°W	M1 MORELOS 1 113.5°W	S1 SPACENET 1 120°W
1	Drive-In PPV (Videopal)		CNN Headline News feed	NUT				college sports & recurring feeds					EUNET, college & pro sports feeds
2	Nebraska Public (6.12-6.3N)	WGBM-CBS Chicago	StarDust Theatre	Sports News Network		ESPN alternate MSG II	CBS programs (West)			TSN sports Network		XHIMT Mexico City (6.2)	
3	Rendezvous PPV (Videopal)			Sports Channel Philadelphia		WSBK Ind Boston	sports & recurring feeds (5.8-6.2)(8.8)			Independent & CBC feeds			college & pro sports feeds
4		WABC-ABC New York	Luccedo	Guest Cinema 1		KBL- Pittsburgh sports feed	ABC feed			Global TV (5.8-6.2) sports feeds			Univision feed
5	Channel America		CNN feed (6.2)			KTVT-Dallas FL Worth	Cable Video Store PPV (Videopal)	college, pro sports & recurring feeds		CBC sports feed			
6				MSG Network		sports feeds		ABC news feeds	NCN Shepherd's Chapel	MuchMusic (6.67) (5.41-6.2 W)			
7	Telemundo feed (Spanish)	All News Channel		SportsChannel- NY	CBS feed		ACTS	CBS programs (East) etc		sports & CBC feeds Newfoundland	CBC, CTV TSN feeds		college & pro sports feeds
8				PreVue Guide			Home Shopping Club			CHCH Hamilton		XHDF Mexico City (6.2)	
9	Telemundo (Spanish)			SportsChannel Chicago, Al/N	news feeds	WPX-N.Y.	DVC Shopping Network	recurring feeds (5.94-6.12 N)(6.8)	Keystone Inspirational	WDIV-NBC			
10				SportsChannel Plus	ABC Network West (6.2-6.8 W)		EWTN	ABC Network (East) (6.2-6.8 W)	college, pro sports & recurring feeds	WXYZ-ABC		XHGC Mexico City (6.2)	
11		Home Shop Spree	NHK TV & sports feeds	SportsChannel America	ABC Network feed	PSN sports feed	Mind Extension University	ABC feed	hockey	CBC North Pacific	The Weather Now (7.8 N) (English & French)		Hospital Satellite Network
12		WGA-NBC Atlanta		Rainbow PPV			Showtime promos	ABC Network East (6.2-6.8 W)			CTV feed	sports feeds	
13		NASA feeds	hockey feeds	New England Sports Network	occasional feeds		Weather Channel	SNS recurring feeds	pro sports feeds	news, sports feeds	sports feeds		
14			college & pro sports feeds	SportsChannel FL	ATT occasional feeds	college & pro sports feeds	C-SPAN II U.S. Senate	college & pro sports feeds	college & pro sports feeds	TCTV Montreal		XEW Mexico City (6.2)	
15			CNN feeds WA, D.C.	Shop at Home Salem Net	CBS news feed (6.2-6.8 W)	KTLL Ind Los Angeles (6.2 Spanish)	Video Hits 1	CBS news feed	PBS-A	CBC- French	Musique Plus Vision/TV (5.58-5.94 N)		
16			college & pro sports feeds	SportsChannel Ohio	CBS Network (West)	college & pro sports feeds	Viewer's Choice 2	college & pro sports feeds	college sports feeds	House of Commons (French)	CTV		
17	ESPN feeds			SportsChannel Los Angeles	news feeds		MTV (East)	college & pro sports feeds	PBS-B	Visnews/ London CBC feeds	TV5 Quebec (French)		
18				Guest Cinema 2	news feeds	hockey	MTV (West)	college & pro sports feeds	news sports feeds	CTV Edmonton	sports feeds		American Ecstasy
19	SCOLA news				news feeds	Stanon	Nickelodeon (East)	recurring feeds (5.94-6.12 N)(6.8)	Oklahoma S.U. & sports feed	CBC North (Atlantic)	pro sports feeds		
20		NBC sports feed		Prime Ticket Sports FNN	CBS Network (East)	college & pro sports feeds	Lifetime sports feeds	college, pro sports	recurring feeds	CBC recurring feeds	Canadian Home Shopping Club		
21	USIA	JISO feed		The Nostalgia Channel	occasional feeds	PASS	Viewer's Choice 1	college & pro sports feeds	PBS-C	WTVS-PBS			BTN Sat. Market USA
22		AFRTS	hockey feeds		news, sports feeds		Nickelodeon (West)	recurring feeds		CHAN Vancouver	First Choice		
23			college & pro sports feed	SportsChannel New England		Home Team Sports	Family Net (5.58-5.76 N)		PBS-D L.D.S., sports	WJBK-CBS	CBC News World		
24				Playboy At Night			C-SPAN I U.S. House	college & pro sports feeds	pro sports feeds	House of Commons (English)	CTV		

## Video

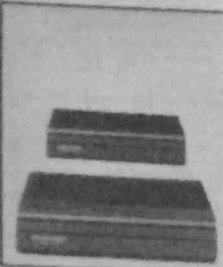


## Ku-band

[illegible]

## Wavelengths

### Wireless Remote Extender



Have you ever wanted to control your VCR, satellite receiver or other audio components from a secondary room? The coax cable or speaker wire is already in place and you want an easy way to control these components from your bedroom? Video Link has introduced a product just for you. The "Missing Link", Model 270, converts the infrared control signal from your handheld

remote to UHF radio frequencies and broadcasts them down to your main room where they are reconverted back to infrared to control all the equipment in the main room.

According to Bill Cawfield, vice president of sales and marketing, the Missing Link, Model 270, is the latest version of their long line of infrared remote control extension products. "We essentially wrote the book on infrared remote control extension products by introducing the first such product back in 1983.

Cawfield adds, "This system does not require the running of any additional wires throughout the house. If the video coax or speaker wire is in place, the user only needs to place one unit in the secondary room and another unit in the main room. No wiring is required to the coax, speaker wire, or the audio/video components."

The 270 basic system will consist of one IR Receiver/UHF Transmitter, Model 271, and one UHF Receiver/Blast-IR, Model 272. The 271 will receive the infrared signals, convert them to UHF and send them to the 272. There they are reconverted to infrared and "blasted" into the main room, saturating the room with infrared and thereby controlling all the audio/video equipment capable of receiving infrared control signals.

For further information, contact Video Link, 12950 Bradley Ave., Sylmar, Calif. 91342; 818-362-0353 or 1-800-843-5465. ■

### Panasonic PS-700EX IRD



Panasonic Communications & Systems Company has introduced the PS-700EX integrated satellite receiver/descrambler featuring the VideoCipher II Plus descrambler and Dolby surround sound.

The PS-700EX has a built-in VideoCipher II Plus descrambler that allows subscription to scrambled satellite broadcast without the need to purchase additional indoor equipment, the capability to receive up to 256 tiers of programs, and advanced on-screen graphics.

The unit's multi-mode surround sound processors provide stereo and surround effects from all source material, including Dolby encoded surround sound. So all satellite video and audio broadcasting as well as VCR playbacks can be enjoyed with stereo and surround effects, whether broadcast in Dolby, stereo or monaural. In addition, using the remote control, the user can select the appropriate surround effect between Dolby surround, A/V movie, A/V music or surround monaural.

With four built-in audio amplifiers, a user can connect two sets of stereo speakers to experience theater-like sound. The speaker in the television set provides the front center channel for a total of five separate audio channels.

The unit's VCR input and output connectors allow stereo recording of satellite programming, and playback of prerecorded tapes with surround sound audio. The PS-700EX is an audio video center for all video entertainment.

Other convenient features include UHF remote control, programmable VCR timer, auto peak, built-in TI filter, on-screen graphics, last channel recall and 18 favorite video channels. Two-way 100-watt music power Panasonic speakers with 10-inch woofers are available as an option.

For further information, contact Panasonic Communications & System Company, Two Panasonic Way, Secaucus, N.J. 07094; 201-348-7000. ■

# ATTENTION

SATELLITE DISH OWNERS AND DEALERS

## STARDUST THEATER

By the year (only)  
NON-REFUNDABLE

\$59.95

## STARION PREMIERE CINEMA

\$6.95/month

\$68.95/year

## TUXEDO NETWORK

NON-REFUNDABLE By the year only. \$55.00

WGN - WPIX - KTVT

## 6 PACK

\$5.95/month

WWOR - WSBK - KTLA

\$67.95/year

## \* SUPERSTAR CONNECTION

WGN - WPIX - KTVT

\$3.25/month \$35.40/year

## \* SKYLINE SILVER

WWOR - WSBK - KTLA

\$3.25/month \$35.40/year

## \* ARTS & ENTERTAINMENT

with any Superstar package

\$1.15/month \$12.95/year

## \* W T B S

with any package

\$1.75/month \$19.90/year

DISCOVERY CHANNEL

## CLASSIC 16

LIFETIME

THE WEATHER CHANNEL

ARTS & ENTERTAINMENT - (A&E)

PRIMETIME 24 - ABC, NBC & CBS

\$16.70/month

WTBS

WPIX - KTVT

WWOR - WSBK

USA - CBN

WGN - KTLA

\$185.85/year

## \* PRIMETIME 24

WABC - ABC

NEW YORK

WBBM - CBS

CHICAGO

WXIA - NBC

ATLANTA

\$3.95/month \$46.50/year

## \* FAMILY CHANNELS

THE WEATHER CHANNEL

LIFETIME

USA - CBN

\$3.50/month \$39.00/year

## DISNEY

\$8.95/month

\$95.95/year

WE ACCEPT VISA, MASTERCARD AND DISCOVER CARD

WEST VIRGINIA RESIDENTS ADD 6% SALES TAX

\*

INCLUDED IN CLASSIC 16

## BUSINESS HOURS

MONDAY THRU FRIDAY  
SATURDAY & SUNDAY

8:00 AM TO 12:00 MIDNIGHT E.S.T.  
8:00 AM TO 10:00 PM E.S.T.

# TURNER-VISION, INC.

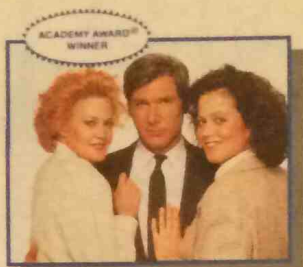
99 Howard Street  
P.O. Box 553  
Welch, WV 24801

1-800-344-6634  
1-304-436-4811  
1-304-436-3126





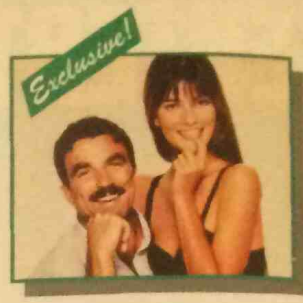
Fellow Traveller



Working Girl



Leviathan



Her Alibi



Chances Are

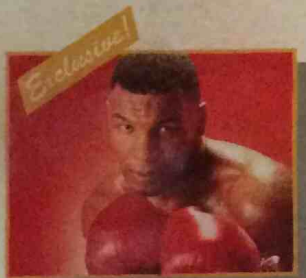


# Rain Man

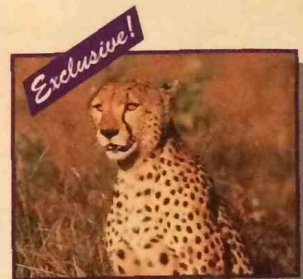
ACADEMY AWARD®  
WINNER



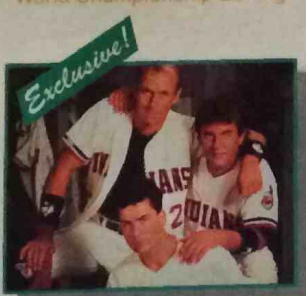
Encyclopedia Brown



Mike Tyson:  
World Championship Boxing



Nature Watch



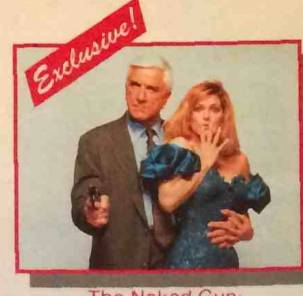
Major League



Cousins



Lean On Me



The Naked Gun:  
From the Files of Police Squad!

## IT'S RAINING HITS ON HBO.

HBO Satellite Services, Inc. is filling your dish with all the excitement of HBO® and Cinemax® this year. For starters, you'll see the Academy Award® winning†, critically acclaimed "RAIN MAN" and "WORKING GIRL." During 1990, HBO will deliver more of the best and biggest Hollywood movies—over 65% of 1989's fifty highest grossing films licensed to pay-TV.

And with more exclusive\* crowd-pleasers like *The Naked Gun: From the Files of Police Squad!* and *Major League*, you'll see why HBO and Cinemax really deliver the best. Plus there are original movies—for subscribers only, hilarious comedy specials and much, much more. 1-800-HBO-DISH (1-800-426-3474) 8 am-11 pm ET—Mon.-Sat.

Simply call 1-800-HBO-DISH for more on how to order.



† Working Girl, Original Song, 1988. Rain Man, Best Picture, Leading Role-Actor, Directing, 1988.  
\* Academy Awards is a registered trademark and service mark of the Academy of Motion Picture Arts & Sciences.

\* Exclusive titles are exclusive on national pay television to HBO and/or Cinemax during the term of their license.

© 1990 Home Box Office, Inc. All rights reserved. HBO and Cinemax are registered service marks of Home Box Office, Inc.



# Maximum Enjoyment...



**Y**our new satellite system should be a source of enjoyment for everyone in the family. In choosing the Cheyenne® Integrated Receiver/Descrambler you can be sure that each member of your family can enjoy their favorite shows without concern for technical problems or exposure to unwanted programs.

With the Cheyenne IR/D, you can program up to 100 of your favorite programs into the receiver memory and easily access those channels with the remote control. The Auto-Tune function lets anyone fine tune the reception with the touch of a button. With the proper subscriptions, even scrambled services are automatically available through the on-board VideoCipher® descrambler. And because the Cheyenne is built by Chaparral, the most respected name in satellite television, you can rely on its performance day after day.

The many locking functions of the Cheyenne IR/D prevent any unwanted viewing of individual channels or satellites with password protection for maximum parental control.

## Minimum Effort.

- **100 Favorite Channels...**can be stored in the receiver's memory for instant access.
- **Fully Integrated Design...**with all components in one package, there are no more stacks of equipment.
- **Computer-Synthesized Tuning...**constantly delivers the best picture available on all the channels.
- **On-Screen Graphics...**that make satellite viewing easy and fun.
- **Easy Access to Satellite Radio...**through the Cheyenne's on-screen menus.
- **Automatic C and Ku-Band Selection...**gets you all the channels on all the satellites.
- **Digital Stereo Audio...**on most subscription services gives you outstanding sound.

Maximize your enjoyment of television with a Cheyenne IR/D satellite system.

Call Chaparral Communications at (408) 435-1530 for the name of the satellite professional in your area.



2450 North First St., San Jose, CA 95131 (408) 435-1530



# New Drake "Series 2": Vivid Pictures, Crisp Sound

by Karl Fincke

The R.L. Drake Company has been a leader in the satellite TV industry since its infancy, producing quality

products with outstanding service records. This year's line of cool-running Drake IRDs is exemplary, offering more features and options than ever. The ESR2450 deluxe satellite receiver/decoder is the top model in the impressive, new "Series 2" generation of IRDs.

This top-of-the-line model incorporates

a built-in actuator control system with power supply for moving the antenna to any of 36 pre-stored satellite positions, 30 Priority View program memories and features large, easy-to-read, on-screen graphics that show pertinent information such as channel, satellite, polarity and signal strength. Owners can receive analog stereo sound in both the discrete and matrix modes, as well as digital stereo sound when decoding scrambled subscription programming. Additional features include external video input, built-in C/Ku-band switching, automatic TV antenna switching, color coded controls and two optional infrared remote controls. A UHF remote comes standard, allowing system operation from anywhere in the house.

The sleek, full-featured ESR2450 is simple to install. If your dish is already tracked to the Clarke Belt, all you need to do is connect the IF cable, polarotor and drive control wires before programming the limits and satellite positions. Dual LNB inputs may be connected to either single C-band and Ku-band inputs or dual C-band or dual Ku-band inputs. The unit is compatible with either pulse or potentiometer-type sensors.

## Attention to Detail

The front panel of the ESR2450 features a bright fluorescent display, indicating the satellite, channel, antenna log scale, antenna movement, signal strength, stereo format, polarity format, program source, audio bandwidth, audio tuning, DNR and VC II signal. Most all functions can be performed from the front panel with the exception of Priority View, direct channel entry, Parental Lockout and volume up/down. Hidden behind the front panel door are controls for setting the dish limits and storing satellite positions and Priority View parameters. The user can also adjust video level, brightness and stability of the on-screen display, signal bar graph level and more. Drake has really paid attention to detail on the ESR2450. On-screen displays can be turned off for purposes of taping with your VCR.

The UHF remote control makes system operation quite simple. Channel changes can be made by direct entry or with the channel up/down keys. Changing satellites can be done in one of two ways. The user can simply press the satellite and number keys until the desired information is displayed or press the satellite key followed by the east or west key and scroll through the satellite names. The dish will wait for a few seconds in case you want to change your mind and then make its move.

Priority View features 30-channel memory which you can program to remember your favorite satellite channels. This includes remembering the satellite, band, format, polarity, channel, audio tuning parameters and even the desired volume. You can return to any of these channels by simply entering the Priority View number on the remote control.

## Sound Stereo

Audio tuning can also be accomplished with the remote control. The ESR2450 is

Please turn to page 5

New Drake ESR2450: cool running, hot performance

## TURN ON THE NIGHT

With The Playboy Channel for as little as \$5.00\*!

SERIES  
SERIES  
SERIES

SPECIALS

COMEDY

Movies

See what you've been missing! For as little as \$5.00 per month\* you can enjoy Playboy's original erotic series, specially selected "R" movies, exclusive comedy and music presentations... plus the VIDEO PLAYMATE OF THE MONTH!

Originals

CALL TODAY! 1-800-422-9000

\*Based on a pre-paid annual subscription rate when taken in combination with SHOWTIME & THE MOVIE CHANNEL and the EXTRAVIEW package. Call for more details. THE PLAYBOY CHANNEL and VIDEO PLAYMATE OF THE MONTH are marks of Playboy Enterprises, Inc. Copyright 1989, Playboy Programs. THE PLAYBOY CHANNEL is available exclusively through Viacom Satellite Networks.





# The Big Picture

An Opinion

Richard Acello

## Gone Dishin'

She's embarrassed Coca-Cola, humbled Mickey D and caused Procter and Gamble to wash its corporate mouth with its own soap. She's a homemaker from suburban Detroit named Terry Rakolta who has caused corporate America to apologize for peddling its burgers and fries on shows such as Fox's "Married ... With Children," which Rakolta says is demeaning to women, but Fox calls

**Seems CMTV is not so much interested in grabbing the viewers by the collar, just sittin' and pickin' for a spell, which is the most agreeable presentation of country music.**

"breakthrough television." Whether or not you agree with Ms. Rakolta, she has certainly managed to grab the sponsors' attention. Who could argue

that homemakers support advertisers by buying their products (and P&G isn't the only soap company in America) and the advertisers take the same dollar and give it to Fox to produce "Married ... With Children." Little noticed in the initial coverage was a letter Ms. Rakolta received from Fox itself, warning her about interfering in others' economic relationships. Was Fox trying to scare her, do you suppose? ...

My most recent favorite channel is CMTV, Country Music Television, still unscrambled on G1/13. While other satellite music stations have cluttered up their days with insulting VJs, game shows and stock car races, it's a welcome relief to flip over to CMTV for uninterrupted country music videos. The station's promos are outdoorsy snips with bluegrass musicians and an occasional plug from a Dwight Yoakum or other artist. Seems CMTV is not so much interested in grabbing the viewers by the collar, just sittin' and pickin' for a spell, which is the most agreeable presentation of country music. ... Yesterday's CBS Evening News had stories

**Putting on a satellite-only station without cable backing falls into the category of boldly going where no man has gone before.**

on John Tower's and Wade Boggs' sex life, tabloid TV and a shoving match at Mets' training camp. Reminds me of a recent edition of "Murphy Brown," in which the FYI show staged a Morton Downey-type free-for-all as a lead-in to its "plight of the homeless" story. Who's zooming who? ...

One of the new, bright stars in the satellite sky is RFD-TV, which is managed by a former satellite dealer named Pat Gottsch. Putting on a satellite-only station without cable backing falls into the category of boldly going where no man has gone before. Among the new spring offerings on RFD are a prime-time agriweather show with coverage of international weather; "Talkin' Country," a half-hour country music interview show; "Outdoors Encounter" and "Outdoor Trail," Bozo the Clown and more movies. Check *Satellite TV Week* for days and times. An ambitious undertaking for an unscrambled, advertiser-supported station ... and no tabloid TV. See you next week. ■

## Channel One Debuts in Controversy

Channel One, the controversial TV news program designed to be shown in high schools, has debuted on Spacenet I but received low grades from the educational community. Groups objecting to Channel One include the American Association of School Administrators, the National Association of Secondary School Principals, the National PTA and activist Peggy Charren's Action for Children's Television. The groups charge Channel One is essentially renting a captive audience for advertisers.

The show consists of a 12-minute news program interrupted four times by commercials. A sample script obtained by *Satellite TV Week* contains features such as Upfront ("Dukakis won't seek 4th term in Massachusetts"), Fast Fact ("Arachibutyrophobia is the fear of peanut butter sticking to the roof of your mouth"), Feature (Johnny Depp) and Pop Quiz ("Which is older, the Pyramids or the Great Wall of China?").

A seven-week, \$5 million test of Channel

One will be beamed daily from Los Angeles to six pilot schools, each of which, according to producer Christopher Whittle, has been given approximately \$50,000 worth of electronics including monitors, VCRs and satellite dishes. On ABC's "Nightline," Whittle explained that the equipment is not being donated and will be pulled back if the test is not successful.

The service's success may ultimately be decided by the number of advertisers Channel One attracts. Early sponsors include Colgate, Nike, Levi's, Snickers, Head and Shoulders and Maybelline. Whether Channel One will help students with basics remains to be seen; the sample script's Fast Fact informs "52 American hostages were released on Jan. 20, 1981, just as Regan (sic) was being sworn in as 40th President of the U.S."

## New Feature Added

Starting in this edition, *Satellite TV Week* will identify programmers in our rolling log with a four-letter description, commonly known as the service's "call letters." Thus, the listing will read G1/22 DISC, to remind you that The Discovery Channel is on G1/22. Additionally, shows read prior to air. For example, if the "Flintstones" appears on TBS at 5:05 p.m., look under the 5 p.m. listing and in the usual satellite order find G1•18 TBS (:05) "Flintstones." Following is the list of *Satellite TV Week* services and their "call letters" in the rolling log. You may wish to clip it for a handy reference.

### SATELLITE TV WEEK "CALL LETTERS"

F5/24 AKTV	Alaska Satellite TV	S1/23 RFD	Rural Free Dish
F1•02 KUSA	ABC Denver	AD/06 MUCH	MuchMusic
F1•04 KCNC	NBC Denver	AD/11 CBCP	Canadian Broadcasting Corp. Pacific
F1•06 KMGH	CBS Denver	AD/15 CBCF	Canadian Broadcasting Corp. French
F1•07 PTS	Prime Ticket Sports	AD/19 CBCA	Canadian Broadcasting Corp. Atlantic
F1/09 HSE2	HSE Alternate	AD/20 CBMT	Canadian Broadcasting Corp. Montreal
F1•10 HSE	Home Sports Entertainment	W4/11 ITN	International Television Network
F1/11 SUN	Sunshine Network	W4•15 PBSA	PBS A Feed
F1•12 KRMA	PBS Denver	W4/17 PBSS	PBS B Feed
F1•14 KWGN	Independent Denver	W4•21 PBSC	PBS C Feed
F1•20 KDVR	Independent Denver	W4/23 PBSD	PBS D Feed
F1/24 PSN	Prime Sports Network	T1/10 ABCE	ABC East
G1•01 HBOW	Home Box Office West	G3/07 ACTS	American Christian Television
G1•02 NASH	The Nashville Network	G3/10 EWTN	Eternal Word Television Network
G1•03 WGN	Independent-Chicago	G3•17 MTVE	Muscle Television East
G1•04 DISE	Disney East	G3•19 NIKE	Nickelodeon East
G1•05 SHOE	Showtime East	G3•20 LIFE	Lifetime East
G1/06 UNIV	Univision	G3•21 VC	Viewer's Choice Pay Per View
G1•07 CNN	Cable News Network	G3•22 NIKW	Nickelodeon West
G1•08 HEAD	CNN Headline News	G3/23 FMLY	Family Net
G1•09 ESPN	ESPN Sports	S3•03 WBSK	Independent-Boston
G1•10 TMCE	The Movie Channel East	S3•05 KTVT	Independent-Dallas/Fort Worth
G1•11 CBN	CBN Family Channel	S3•09 WPIX	Independent-New York
G1/12 ARTS	Arts & Entertainment	S3•15 KTLA	Independent-Los Angeles
G1/13 CMTV	Country Music Television	S3/21 PASS	Pro Am Sports
G1•14 TMCW	The Movie Channel West	T2/10 ABCW	ABC West
G1•15 WWOR	Independent-New York	T2/16 CBSW	CBS West
G1•16 SHOW	Showtime West	T2/20 CBSE	CBS East
G1/17 INS	Inspirational Network	F4/06 MSG	Madison Square Garden
G1•18 TBS	Turner Broadcast Services	F4/09 SPOV	Sports Vision Chicago
G1•19 CINE	Cinemax East	F4/10 SCAM	Sports Channel America
G1/20 GALA	Galavision	F4/12 SCNY	Sports Channel New York
G1•21 USAE	USA Network East	F4/13 NESN	New England Sports Network
G1/22 DISC	Discovery	F4/16 NJT	National Jewish TV
G1•23 HBOE	Home Box Office East	F4•20 PTS	Prime Ticket Sports
G1•24 DISW	Disney West	F4/21 NOST	The Nostalgia Channel
F3/02 TLC	The Learning Channel	F4•22 HTS	Home Team Sports
F3/03 TRIN	Trinity Broadcasting Network	F4/23 SCNE	Sports Channel New England
F3/04 BRAV	Bravo	F4•24 PLAY	The Playboy Channel
F3•10 USAW	USA Network West	G2•02 STAR	StarDust Theatre
F3/11 FNN	Financial News Net/SCORE	G2•04 FRUN	First Run Pay Per View
F3•12 AMC	American Movie Classics	G2•10 TUXX	Tuxedo
F3/16 TRAV	The Travel Channel	F2•02 WBBM	CBS Chicago
F3•18 TNT	Turner Network Television	F2•04 WABC	ABC New York
F3/20 BET	Black Entertainment TV	F2•12 WXIA	NBC Atlanta
F3•23 CINW	Cinemax West	S2/05 CHAM	Channel America
T3/18 FOXE	Fox East		
T3•19 STRN	Starion		
W5/01 BORE	Boresight		
S1/05 CTN	Christian Television Network		
S1•18 AMEX	American Exxstasy Channel		



## Nets Band Together

No fooling, beginning April 1, the nation's cable networks celebrate their existence with "Thirty Days of Great Nights." A measure of just how well HBO et al is doing in the U.S. could be inferred from the fact that ABC, CBS and NBC, once arch rivals, have apparently agreed to become equal founders of the Network Television Association. The stated purpose of this organization, staked jointly from Big 3 coffers to the tune of around \$1 million, is to provide research data to advertisers and advertising agencies on the benefits of reaching the consuming public via network TV. So, despite a recent CBS-produced pamphlet, which reportedly questioned the value of advertising on cable, the Big Three must be worried enough about the competition to forge and fund such an alliance. By the way, that CBS pamphlet inspired a retort. Referring to the nickname of the CBS headquarters building, the cable industry's response was "People who live in Black Rocks shouldn't throw stones."

## Failing Schools

An important five-part series begins on PBS, Monday, March 27. Taped in 17 states and Japan, "Learning in America" explores the serious challenges facing the nation's educational system. Roger Mudd is the program's primary host and his correspondent staff includes "MacNeil-Lehrer" veterans John Merrow, Paul Solman and Charlayne Hunter-Gault, all but the latter having had prior classroom teaching experience. John Merrow is the only TV reporter working fulltime on education issues, with several award-winning productions, "Your Children—Our Children" and "Options in Education." Hunter-Gault and Solman have won Emmys for their reporting. With collapsing test scores in all areas, violence, drugs and nearly a 25 percent high school dropout rate, understanding and improving the state of "Learning in America" would seem a high priority task and worth watching. The series was funded by the Chrysler Corporation.

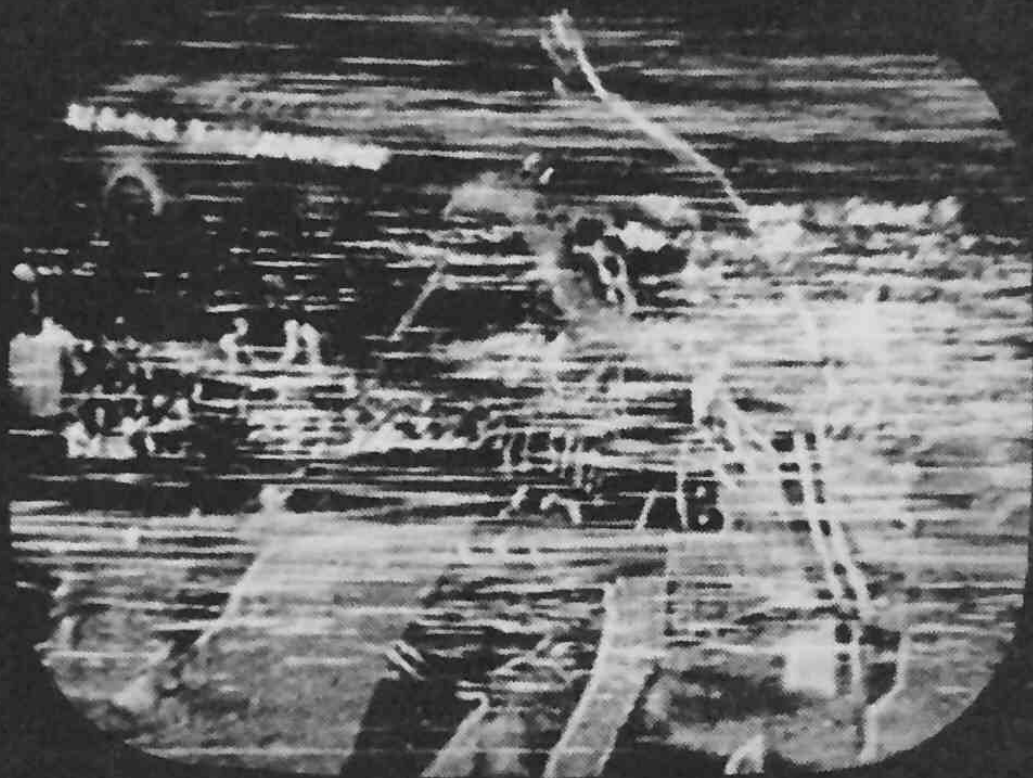
## Political Programming

C-Span's own programming calendar highlights three upcoming special coverage events. From March 26 to 30, C-Span travels to Chicago to tape "American Profiles," interviews with the city's business, political and media leaders at 7 p.m. On April 2, Manning Marable, chairman of Ohio State University's Black Studies Department, addresses the Institute for Policy Studies in Washington, D.C. at 12 p.m. From April 11 to April 14, there will be periodic reports from the floor of the annual meeting of The American Society of Newspaper Editors. And a closing trivia note: The U.S. Information Agency began carrying C-Span's programming overseas last November, via the Worldnet Service, and a special overseas telephone line was installed to allow international viewers to participate in the network's call-in programs. Interest seems to be running high. During January alone, C-Span reports 39 international incoming calls received from Mexico, Belgium, Canada, the Netherlands, West Germany, Turkey, Venezuela, Thailand, Indonesia, Ireland and several Middle Eastern nations.

## The Politics of Imitation

The rights to broadcast the British version of C-Span, live coverage of parliamentary debates in the House of Commons, have become a bone of contention. Rupert Murdoch's Sky TV and the British Satellite Broadcasting Company both want to carry this political programming, but there is a difference in approach. While the BSB would use the coverage solely as a portion of its planned information and news channel (a la CNN), Rupert Murdoch has hinted that he would not only show the House of Commons in action, but would swap the Parliamentary programming for a roughly equal amount of C-Span's Congressional coverage.





# WILL THE NCAA PLAYOFFS GET SLAM-DUNKED?

PrimeTime 24 can save the game. Win with our sharp reception of NCAA Basketball and all other CBS, ABC and NBC programs. 24 hours a day, for just \$49.95 a year!

Catch all the NCAA live action on CBS (F2, 2)

- 3/12 — Selection of 64 Teams
- 3/16 — 3/17 1st Round Action
- 3/18 — 3/19 2nd Round Action
- 3/23 — 3/24 Regional Semifinals
- 3/25 — 3/26 Regional Finals
- 4/1 — Final Four
- 4/3 — Championship Final



## 1-800-248-2844

DON'T GET CAUGHT IN THE SCRAMBLE.

**WXIA (NBC-Atlanta), WABC (ABC-New York), WBBM (CBS-Chicago).**  
**PrimeTime 24 is available in all areas where network channels are not clearly received.**

PrimeTime 24 is a servicemark of PrimeTime 24 Joint Venture.  
 ©1989 PrimeTime 24 Joint Venture.



ALL THE  
RIGHT  
MOVIES...  
SERIES...  
AND SPORTS

**STARZ**  
PREMIERE CINEMA

**WGN**

**TX**  
SPIRIT  
KMY

**KTLA**  
LOS ANGELES

**WPIX**  
NEW YORK ALIVE

**WOR**

**WSBK**  
BOSTON

THE  
WEATHER  
CHANNEL

THE CBS  
*Family*  
CHANNEL

**SATELLITE  
SPORTS  
NETWORKS**

LIFETIME  
TELEVISION

**SUPERSTAR  
PREVIEW**  
Guide

**USA**  
NETWORK

CALL FOR  
PACKAGE PRICES

**SUPERSTAR**  
**SC**  
CONNECTION

1-800-CALL-SSC  
EXT. 45



# Series 2

## The next generation IRDs

DRAKE ESR 1024 Integrated Earth Station Receiver

VIDEOCIPHER II Descrambler Equipped System

ESR 1024

ESR 1224

ESR 2450

DRAKE ESR 1224 Integrated Earth Station Receiver

DIGITAL ON-SCREEN GRAPHICS DMR / IR REMOTE VIDEOCIPHER II Descrambler Equipped System

DRAKE ESR 2450 Integrated Earth Station Receiver

DIGITAL ON-SCREEN GRAPHICS DMR / IR REMOTE VIDEOCIPHER II Descrambler Equipped System

These versatile, expandable integrated receiver decoders with built-in VideoCipher II descrambling systems give you more features and more options than ever. So there's sure to be a Series 2 receiver to fit your needs and budget.

All three receiving systems feature extended threshold sensitivity for the sharpest pictures ever, even in weak signal conditions. Our two top models come with UHF remote control, so your receiver can be operated from any room in your home, and on-screen display for easy programming. These features are also available on our economy model with an optional upgrade. And all Series 2 models feature a variety of remote control options to suit your individual viewing requirements.

As America's largest satellite TV manufacturer, we are dedicated to building quality receivers that give you real value. Visit your Drake dealer and see the next generation of IRDs today!

**DRAKE**  
We Bring Entertainment Down To Earth

Ownership or possession of the Series 2 receivers with VideoCipher II descrambler does not entitle the owner or possessor to receive descrambled signals without authorization by the programmer.

VideoCipher II is a registered trademark of General Instrument

Copyright 1986 The R. L. Drake Co.

R. L. Drake Company  
P.O. Box 112  
Miamisburg, Ohio 45342 USA  
Telex: 288-017 DRAKE MSBG

Sales Office: (513) 866-2421  
Service & Parts: (513) 866-3211  
In Canada: (705) 742-3122  
Fax: (513) 866-0806

# AND NOW, THE GOOD NEWS...



Broadcast News © Twentieth Century Fox

## STARDUST *Theatre*

**HAS MORE MOVIES THAN ANYONE...  
AT THE LOWEST PRICE. \$65 A YEAR  
CALL 1-800-433-7519**

(Mastercard and Visa accepted)

**LAS VEGAS SBCA/STTI SHOW ATTENDEES!**

**See us at booth 504-405 and meet the Descrambler Guy in person! Dealers —  
Sign up (no charge) with the Stardust Theatre Dealer Plan that  
now includes a subscription renewal policy.**

*Stardust Theatre and Tuxedo Network are divisions of Home Dish Satellite Networks, Inc.*



# Channel Choice Services

# satellite

## Audio

SAT/CH	PROGRAM SERVICE	FMT	LEFT	RIGHT
<b>CLASSICAL</b>				
F4/20	KSUR-FM Monterey	M-N	5.76	
G3/11	Classical Collections	D-N	6.3	6.48
AD/16	CBC-FM (French)	D-N	5.4	5.58
AD/22	CBC Radio Vancouver, B.C.	D-N	5.76	5.94
A2/11	Classical music	M-W	6.8	
G1/03	WFM-FM Chicago	D-N	6.3	6.48
G1/15	WQXR-FM (NYC)	D-N	6.3	6.48
F1/07	KSUR-FM Monterey, CA	M-N	5.76	
<b>CONTEMPORARY</b>				
F4/19	Contemporary Top 40	D-N	5.58	5.76
G3/11	Classic Hits	D-N	5.22	5.40
G1/03	Seeburg Lifestyles	M-N	6.075	
G1/03	Seeburg 2 Lifestyles	M-N	6.165	
F1/12	Great Songs	D-N	7.38	7.56
<b>COUNTRY</b>				
F4/19	Country Music	D-N	5.4	5.94
S3/09	Modern Country	D-N	5.76	5.94
G3/11	America's Country Favorites	D-N	5.04	7.74
AD/18	CJFW B.C.	M-N	6.48	
AD/18	CFWE Alberta	M-N	7.875	
S1/17	Modern Country Music	M-N	6.2	
G1/02	TNNR, Nashville Country	D-N	7.38	7.56
F1/14	Country Music	D-N	6.12	6.3
<b>EASY LISTENING</b>				
F4/08	United Video/background	D-N	5.89	
F4/19	Rhythm & Blues	D-N	7.38	7.56
AD/08	CJCL Toronto-MOR music	M-N	7.8	
AD/20	Easy Listening	M-N	6.48	
F1/12	Easy Listening	D-N	6.12	6.3
<b>FOREIGN LANGUAGE</b>				
S2/19	Radio France International	M-W	5.8	
S3/05	Pan American Net. (Spanish)	M-N	6.16	
AD/14	CKAC-AM Montreal (French)	M-N	5.76	
AD/15	CBC Radio (French)	D-N	5.58	5.76
M1/02	Radio Felicidad, Mexico (Span.)	M-W	6.8	
G1/15	The Greek Network	M-N	7.335	
<b>JAZZ</b>				
F4/20	KKJZ-L.A.	M-N	5.58	
G3/15	KKJZ-L.A.	D-N	5.58	5.76
G3/11	New Age of Jazz	D-N	7.38	7.56
F1/07	KKJZ-L.A.	M-N	5.58	
<b>NEWS &amp; INFORMATION</b>				
S2/02	Milwaukee Public Radio	DS-W	6.48	6.8
S3/05	USA Radio Network	M-N	6.48	
S3/09	C-SAT TVRO	M-W	6.8	
	9:30-11:30 p.m. Mon-Fri			
	12:30 p.m. Sat./8:10 p.m. Sun.			
S3/15	FIN/Financial news	M-N	6.12	
S3/17	Sun Radio Net. Talk/News	M-N	5.44	
G3/09	KNOW-NPR St. Paul	M-N	6.235	
G3/24	C-SPAN 1: Capitol Hill & Int'l	M-W	5.22	5.94
G3/24	C-SPAN 2: BBC World Service	M-W	5.4	
G1/07	CNN Radio News Service	M-W	6.3	
G1/09	ESPN Prog. changes	M-W	6.2	
	9:30 a.m. & 12:30 p.m. (E)			
G1/18	SBCA Information Network	M-W	6.8	
	Sun-Thur 9-11 p.m. (E)			
F1/04	Sun Radio Net. Talk Shows	M-N	5.44	
FS/24	KSXA-FM Alaska-Public Radio	D-N	7.38	7.56
<b>RELIGIOUS</b>				
F4/08	Tedewater Radio	D-N	5.58	5.76
S3/03	WRDL Boston	M-N	6.12	
G3/07	Southern Gospel Music	M-N	5.5	
G3/07	ACTS Radio Network	D-N	6.3	6.48
G3/23	WRVL-FM VA	M-N	7.38	
G1/11	CBN Radio Network	D-N	6.30	6.48
<b>ROCK</b>				
F4/19	Music of '50s, '60s & '70s	M-N	6.43	
G3/11	Light & Lively Rock	D-N	5.94	6.12
AD/08	CFHI-Toronto, soft album	M-W	6.8	
AD/22	CFMI-Westminster, B.C.	M-W	6.8	
AD/23	VOCM Newfoundland	M-W	6.17	
F3/11	Cable Radio Net.-LA 50's Music	M-N	7.38	
F1/14	Music of the '50s, '60s, & '70s	D-N	7.38	7.56
<b>SPECIAL INTEREST</b>				
F4/15	Yesterday USA/Old Time Radio	M-W	6.2	
F4/19	24 Hour Comedy	M-N	7.695	
F4/19	Big Bands of '40s	M-N	7.785	
F4/19	"In Touch"—Reading to blind and disabled	M-N	7.875	
F4/21	Yesterday USA/Old Time Radio	M-W	6.2	
S3/09	Natl Black Network	D-N	6.3	6.48
G3/11	Soft Sounds	D-N	5.58	5.76
	(Big Bands Sat. 10 p.m.)			
G3/11	"In Touch"—Reading to blind and disabled	M-N	7.875	
WS/18	SBN Pittsburgh, Soul Music	D-N	7.38	7.56
<b>VARIETY</b>				
G3/09	WCCO-Akt Minneapolis-St. Paul	M-N	7.56	
G3/11	KOA-Denver	M-N	8.06	
AD/11	CBC Radio	M-N	6.12	
AD/16	CBC-FM Variety Music	D-N	5.76	5.94
AD/17	CBC-FM (Eng./Ind.)	M-N	6.17	
AD/18	CKRW-AM White Horse, Yukon	M-W	6.8	
AD/18	CKER Edmonton-Cosmopolitan	M-N	7.38	
AD/20	CBM-FM, CBC Radio Quebec	M-N	6.2	
AD/21	CKM-FM Yellowknife, NWT	M-W	5.4	
AD/22	CFMI-FM New Westminster B.C.	M-W	6.8	
AD/22	CBU-AM, Vancouver, BC	M-N	7.38	
AD/22	CBC Radio Vancouver	M-N	7.6	
AD/23	CHON-FM Whitehorse, Yukon	M-W	5.41	
AD/24	CBC-FM—Music	D-N	5.76	5.94
F3/01	WCCO-Minneapolis	M-N	7.56	

## C-band

	S2	F2	G2	F4	T2	S3	G3	T1	W4	AD	A2	M1	S1
	SPACENET 2 69°W	SATCOM 2R 72°W	GALAXY 2 74°W	SATCOM 4 82°W	TELSTAR 302 85°W	SPACENET 3 87°W	GALAXY 3 93.5°W	TELSTAR 301 96°W	WESTAR 4 99°W	ANIK D1 104.5°W	ANIK D2 110.5°W	MORELOS 1 113.5°W	SPACENET 1 120°W
1	Drive-In PPV (Videopal)	ONN Headline News feed	StarDust Theatre	Sports News Network		ESPN alternate MSG II	CBS programs (West)			TSN sports Network		XNNMT Mexico City (5.2)	EENET college & pro sports feeds
2	Nebraska Public (6.12-6.3N)	WBBM-CBS Chicago		Sports Channel Philadelphia									college & pro sports feeds
3	Rendezvous PPV (Videopal)			Guest Cinema 1		WSBK Ind Boston	sports & recurring feeds (5.8-6.2)(B.8)			Independent & CBC feeds			college & pro sports feeds
4		WABC-ABC New York	Tuxedo			KBL-Pittsburgh sports feed	ABC feed			Global TV (5.8-6.2) sports feeds			Univision feed
5	Channel America		CNN feed (5.2)			KTV-Dallas Ft. Worth	Cable Video Store PPV (Videopal)	college, pro sports & recurring feeds		CBC sports feed			
6				MSG Network		sports feeds		ABC news feeds		NCH Shepherd's Chapel		MuchMusic (6.67) (5.41-6.2 W)	CBC, CTV TSN feeds
7	Telemundo feed (Spanish)	All News Channel		SportsChannel-NY		ACTS	CBS programs (East) e/c						college & pro sports feeds
8				PreVue Guide		Home Shopping Club							
9	Telemundo (Spanish)			SportsChannel Chicago, A/N		DVC Shopping Network		recurring feeds (5.94-6.12)(B.8)		Keystone Inspirational		WDRV-NBC	
10				SportsChannel Plus		ABC Network West (5.2-6.8 W)	EWTV	ABC Network (East) (5.2-6.8 W)		college, pro sports & recurring feeds		WNYZ-ABC	
11		Home Shop Spree	NHK TV & sports feeds	SportsChannel America		ABC Network feed	PSN sports feed	ABC feed		hockey		CBC North Pacific	The Weather Now (7.8 N) (English & French)
12		WQIA-NBC Atlanta		Rainbow PPV		Showtime promos		ABC Network East (5.2-6.8 W)					CTV feed
13		NASA feeds	hockey feeds	New England Sports Network		occasional feeds		SNS recurring feeds		pro sports feeds			sports feeds
14			college & pro sports feeds	SportsChannel FL		ATT occasional feeds		college & pro sports feeds		C-SPAN II U.S. Senate			TCTV Montreal
15			CNN feeds WA, D.C.	Shop at Home Silent Net		CBS news feed (5.2-6.8 W)	KTLL Ind Los Angeles (6.2 Spanish)	Video His 1		CBS news feeds		PBS-A	CBC-French
16			college & pro sports feeds	SportsChannel Ohio		CBS Network (West)	college & pro sports feeds	Viewer's Choice 2		college & pro sports feeds		House of Commons (French)	Musique Plus VisionTV (5.38-5.94 N)
17	ESPN feeds			SportsChannel Los Angeles		news feeds		MTV (East)		college & pro sports feeds		PBS-B	Visnews/London CBC feeds
18				Guest Cinema 2		news feeds		MTV (West)		college & pro sports feeds		news sports feeds	CTV Edmonton
19	SCOLA news					news feeds	Starion	Nickelodeon (East)		recurring feeds (5.94-6.12)(B.8)		Oklahoma S.U. & sports feed	CBC North (Atlantic)
20		NBC sports feed		Prime Ticket Sports FAN		CBS Network (East)	college & pro sports feeds	Lifetime sports feeds		college, pro sports		recurring feeds	CBC recurring feeds
21	USA	JSO feed		The Nostalgia Channel		occasional feeds	PKSS	Viewer's Choice 1		college & pro sports feeds		PBS-C	WTYS-PBS
22		AFRTS	hockey feeds			news, sports feeds	Nickelodeon (West)	recurring feeds				CHAI Vancouver	First Choice
23			college & pro sports feeds	SportsChannel New England			Home Team Sports	Family Net (5.58-5.76 N)		PBS-D L.O.S.: sports		WJLB-CBS	CBC News World
24				Playboy At Night				C-SPAN I U.S. House		college & pro sports feeds		House of Commons (English)	CTV

## Video

ABC NETWORK (at)	East West	ABCE ABCW	T1/10 T2/10	CANADIAN BROADCAST CORP.	CBCA AD/19 AD/15 AD/11 AD/20	DISNEY CHANNEL (at)	East West	DISE DISW	G1+04 G1+24	HOME SHOPPING CLUB	G3/08 G3/22	MOVIE/TV Promos
ABLE TELECOMMUNICATION SERVICE		W4/10 W5/10		North Atlantic Time Zone French Pacific Time Zone Montreal	CBCE CBCE CBCE CBCE	DRIVE-IN CINEMA PPV (Videopal only)		DIC	S2+01		F2/11	MSC-SPORTSCHANNEL Minneapolis
ALASKA SATELLITE TV	AKTV	F5/24			W5/13	EENET Emergency Education Net. (occasional broadcasts)			S1/01	HOME SHOPPING SPREE		MUCHMUSIC (at) Music Videos
ALL NEWS CHANNEL	ANCH	F2/07				ESPN (at) Sports		ESPN	G1+09	HOME TEAM SPORTS	HSE	MUSIC TELEVISION (at) Rock videoclips, concerts
ALTERNATE VIEW NET Methodist		F3/12			T1/07	ETERNAL WORD TV NET Catholic programming		EWTV	G3/10	HSE Alternate	HSE2	MUSIQUE PLUS French Music Videos
AMERICAN CHRISTIAN TV Baptist family programming	ACTS	G3/07			S2/05	FAMILY CHANNEL Family, some religious, 700 Club is "in the clear"		FAM	G1+11 F1+01	HOUSE OF COMMONS English Parliamentary Coverage French	AD/24 AD/16	NASA FEED Weekly Update Thurs. 11:30 a.m.
AMERICAN EXOTASY Adult movies	AMEX	S1+18			CINEW F3/23	FINANCIAL NEWS NET		FNN	F1+07 F3+11 F4+20	INSPIRATIONAL NETWORK (at)	INS	NASHVILLE NETWORK (at) Country entertainment, interview, sports, 9 a.m.-3 a.m.
AMERICAN MOVIE CLASSICS Sun/Sat. 1 p.m.-7:30 a.m., M-F 3 p.m.-4:30 a.m.	AMC	F3+12			HEAD G1+08 G2/01	FOX TV NETWORK East: Sat. 8 p.m., Sun. 7 p.m. Mon. 11 p.m.-midnight West: Sat. 11 p.m., Sun. 10 p.m. Mon. 10 p.m.		FOX	T3/18	KBL-Pittsburgh Sports	S3+04	NATL. CHRISTIAN NETWORK Shepherd's Chapel
ARTS & ENTERTAINMENT (at)	A&E	G1+12			CMY G1+01	GALAVISION Spanish		GALA	G1+20	KEYSTONE INSPIRATIONAL KCNC NBC-Denver	W4/09	NATL. COLLEGE TV 12 a.m.-6 a.m. daily
BAPTIST TELEVISION NET.		S1/21			CMTV G1/13	GREENSHEET TVRO Tues. 10:00 p.m. Thurs. 9:00 p.m.			S1/21	KTLL IND-Los Angeles CA Angels, LA Clippers, Movies	KTMG F1+06	NATL. JEWISH TV Sun. 1-4 p.m.
BLACK ENTERTAINMENT TV (at)	BET	F3/20			G3/24	HBC Telemundo Spanish, 9 a.m.-3 a.m. Daily			S2/09	KTVT IND-Dallas Rangers	KTVT	NBC NETWORK (at) Country entertainment, interview, sports, 9 a.m.-3 a.m.
BRAVO (at) Cultural programs, movies, M-F 8 p.m.-6 a.m. Sun/Sat. 5 p.m.-6 a.m.	BRAV	F3/04			G3/14	HIT VIDEOS USA (at) 1 a.m. to 9 a.m.			F1/10	KUBD IND-Denver 2 a.m.-8 a.m. Movies	KUSA F1+02	NEBRASKA PUBLIC TV
CABLE NEWS NETWORK	CNN	G1+07				DISCOVERY CHANNEL, THE Family entertainment, education and specials, 9 a.m.-3 a.m.		DISC	G1/22	KWGN IND-Denver	KWGN F1+14	NEW ENGLAND SPORTS NETWORK Red Sox, Bruins
CABLE VIDEO STORE PPV (Videopal only)	CVS	G3+05							G1+23	LEARNING CHANNEL, The LIFETIME Health, crafts, cooking Medical Network	LIF LIFW	NHK News feeds with some Japanese subtitles
										MADISON SQUARE GARDEN Sports, pro and amateur	MSG F4+06	NICKLEODEON Children's programs
										MIND EXTENSION UNIVERSITY Accredited college classes	G3/11	NATIONALIA CHANNEL Old-time TV films, news
										MOVIE CHANNEL, THE	TMCE G1+10	PACIFIC SPORTS NETWORK