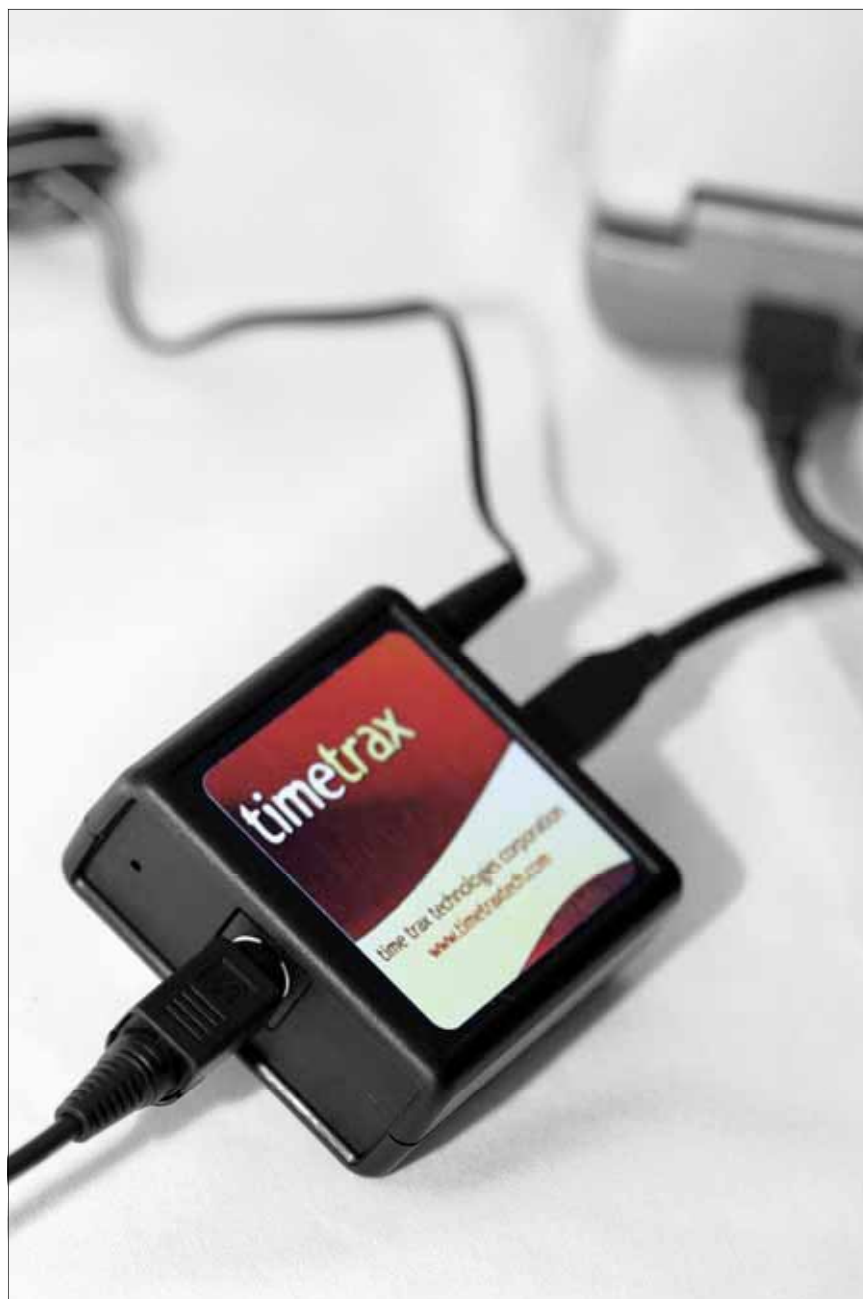




timetrax recast documentation

Sirius, XM, & XM-Online



Thank you for choosing TimeTrax Recast!

**IT IS VERY IMPORTANT THAT
YOU FOLLOW THESE
INSTRUCTIONS IN THE
PROPER ORDER.**



**IF YOU DO NOT, YOUR TIME
TRAX USB ADAPTER WILL NOT
WORK PROPERLY!**



**TimeTrax is not
designed to enable the
sharing of copyrighted works over
the Internet.**

**Time Trax
Technologies respects the rights of
copyright holders.**

what's included

XM

- 1) TimeTrax interface for XM
- 2) XM Direct Radio
- 3) DIN cable to connect TT unit to XM unit
- 4) USB cable
- 5) Audio cable
- 6) A/C power adaptor
- 7) Radio Antenna
- 8) Install CD
- 9) Activation Key
- 10) Good karma for ordering our product

Sirius

- 1) TimeTrax interface for Sirius
- 2) Sirius Connect Radio
- 3) USB cable
- 4) Audio cable
- 5) A/C power adaptor
- 6) Radio Antenna
- 7) Install CD
- 8) Activation Key
- 9) Good karma for ordering our product

system requirements

Your computer must meet or exceed the following requirements in order to run TimeTrax properly:

- Windows 2000 or XP
- 25 MB disk space plus storage space for MP3 files
- 10 GB minimum disk space free on main Windows drive for temp files
- Sound card with a line in jack
- A compatible satellite radio receiver
- An Internet connection

software installation

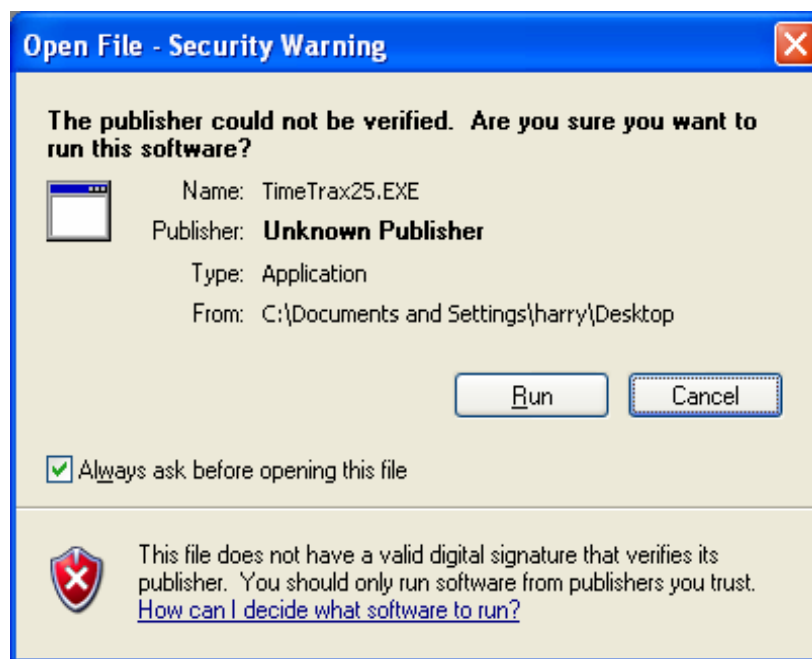
Download the Latest Version

Please visit <http://www.timetraxtech.com/> and download the latest version of the software by clicking on download + try from the top navigation. Then, click, "Click Here to Download". Choose, "Save" and save the file to your computer.

Start the Software Installation

Do not connect any cables yet.

Double click the file you downloaded to start the software installation. If you receive the security warning at the top of the next page, click, "run."



Follow the rest of the prompts to complete the installation. If your screen looks like nothing has been happening for a moment, like this:



Then, click on the program at the bottom called, "Software Install...". When this screen appears, choose, "Continue Anyway":

Restart Your Computer

After the software installation completes, please restart your computer. Then, continue on to the next page.

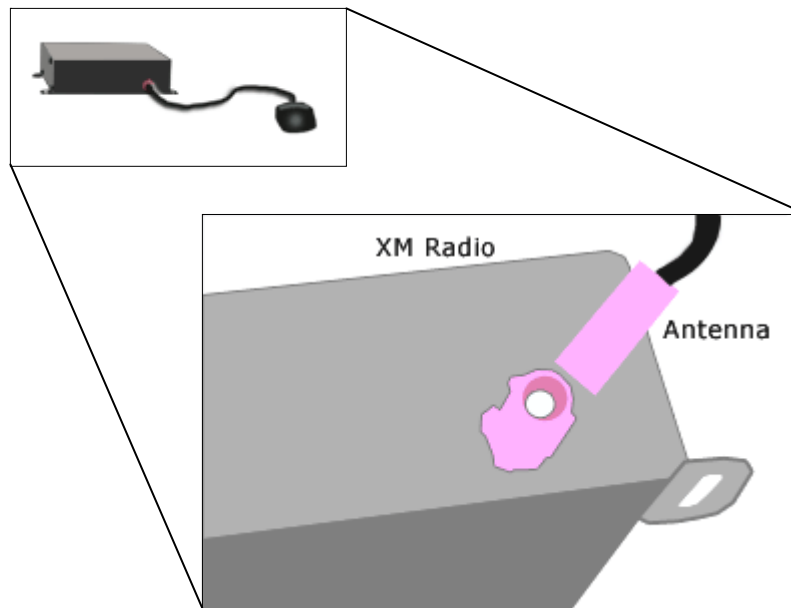


cable connections

Connect the Satellite Reciver Antenna (Sirius and XM Direct)

Connect the antenna to the Antenna Jack on the radio.

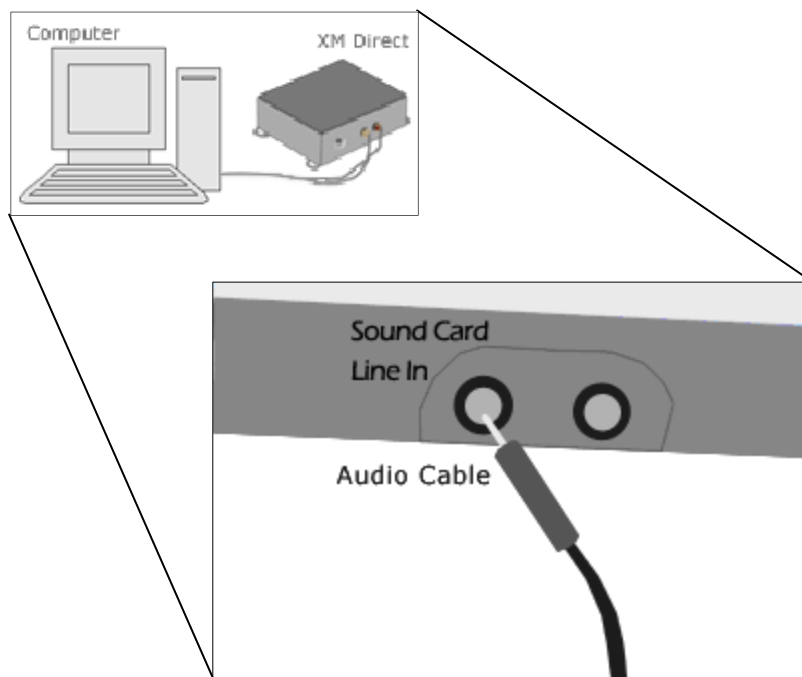
Next, position the antenna near a south facing window or wall or outside if necessary:



Connect the Audio Cables

Connect the audio cable to the audio out jack of the radio.

Connect the opposite end to your computer's **line input** jack on the sound card (this jack is *typically* blue):

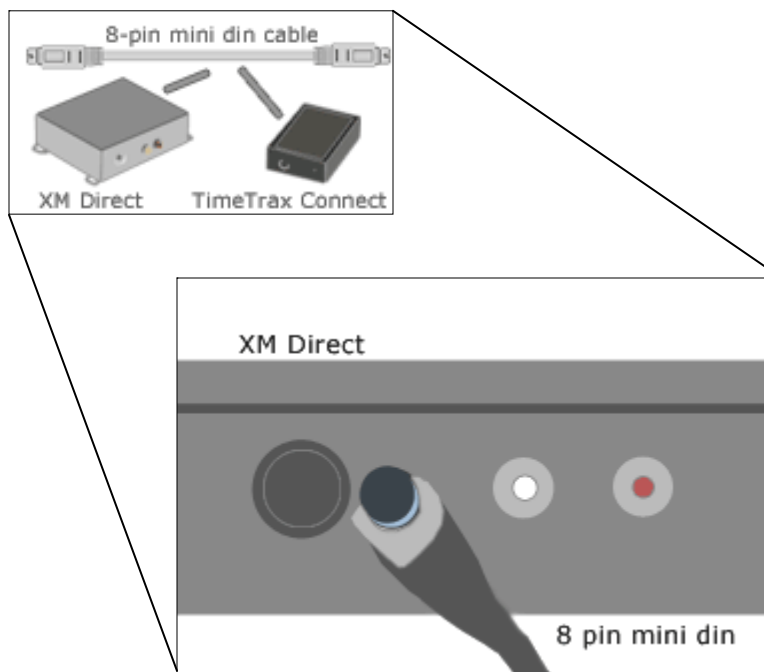


Please Note: A microphone jack will not work. The audio cable must be plugged into your computer's line input jack. Most laptops have a microphone jack and not a line input jack. A microphone jack will not work.

For the XM Direct:

Connect the XM Direct to the TimeTrax Adapter

Using the 8-pin mini-din cable, connect the XM Direct to the TimeTrax Connect Adapter:



For the Sirius Radio:

Connect the Sirius Radio to the TimeTrax Adapter

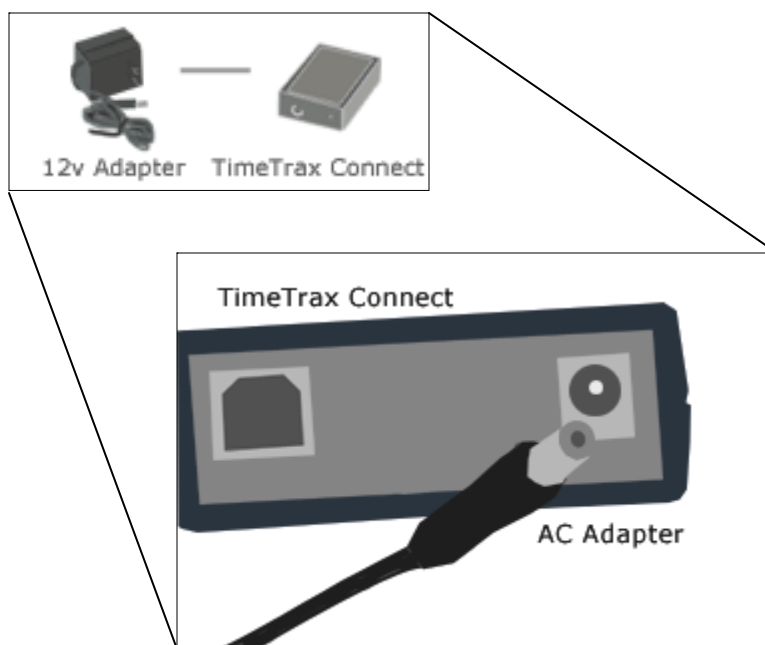
IF YOU ARE SUPPLYING YOUR OWN RADIO YOU MUST FOLLOW THE FOLLOWING STEPS TO PREPARE THE SIRIUS RADIO

- 1) If you have a good look at the Sirius radio you will see that it has two parts to it: the dark grey part and the silver part.
- 2) Using a proper screwdriver remove the three screws that hold the two pieces together. There is one on the top and one on each side of the unit.
- 3) Using a bit of force separate the two pieces.
- 4) Plug the TimeTrax unit into the Sirius radio. It should be obvious now that the unit is separated how the units plug together.

(No cable is required)

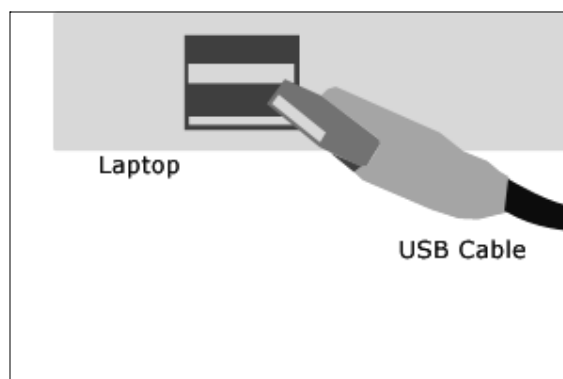
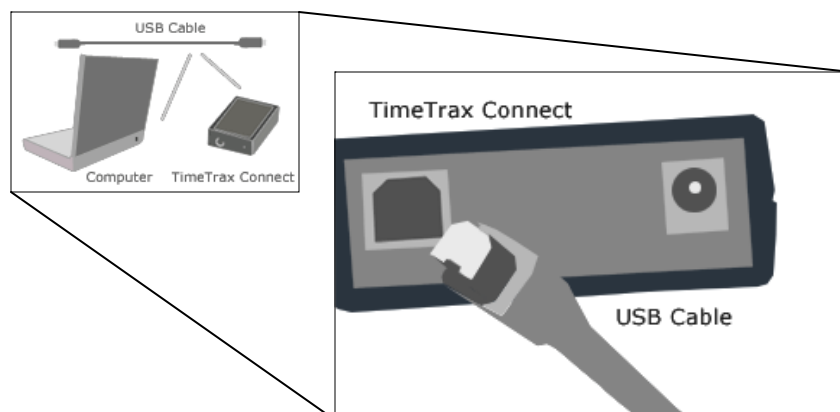
Connect the AC Adapter (XM Direct and Sirius)

Connect the AC adapter to the TimeTrax Connect Adapter and plug the other end into the wall:



Connect the USB Cable (Sirius and XM Direct)

Connect the USB cable to the TimeTrax Connect Adapter and the other end to your computer:



The computer will discover two new USB devices: Multiport serial adapters—TUSB3410 Device

For each device, select, “automatically install the drivers”

On some computers, a conflict arises in the device manager with the “Serial Mouse”. This can easily be alleviated by performing the following: Right-click on my computer and choose manage. Expand System tools and click on the Device Manager. On the right hand side, expand the item titled, “Mice and Other Pointing Devices.” If you see an item called Microsoft Serial Mouse, right click on it and choose disable. You can now exit the Device manager.



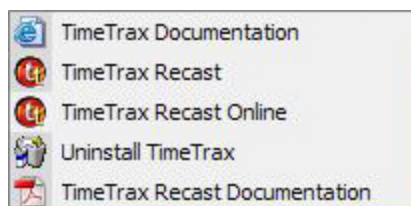
Restart the computer!

how to start timetrax recast

TimeTrax Start Menu

Under the Start Menu TimeTrax Recast creates a TimeTrax Recast folder.

In this folder you have the following choices:



TimeTrax Documentation (with I.E. Logo)

This choice will take you to our website where you can download the latest version of this document.

TimeTrax Recast

If you are using a Hardware Radio with TimeTrax Recast this is the choice you should be using. It will auto-detect if you have Sirius or XM hardware connected to the PC and load accordingly.

TimeTrax Recast Online

If you are using XM-Online ONLY this is the choice you should use. It will load TimeTrax Recast in ONLINE mode only. You will have to configure TimeTrax Recast with your XM-Online credentials. (More on this later)

Uninstall TimeTrax

If you wish to uninstall TimeTrax from your PC use this menu option.

TimeTrax Documentation (PDF logo)

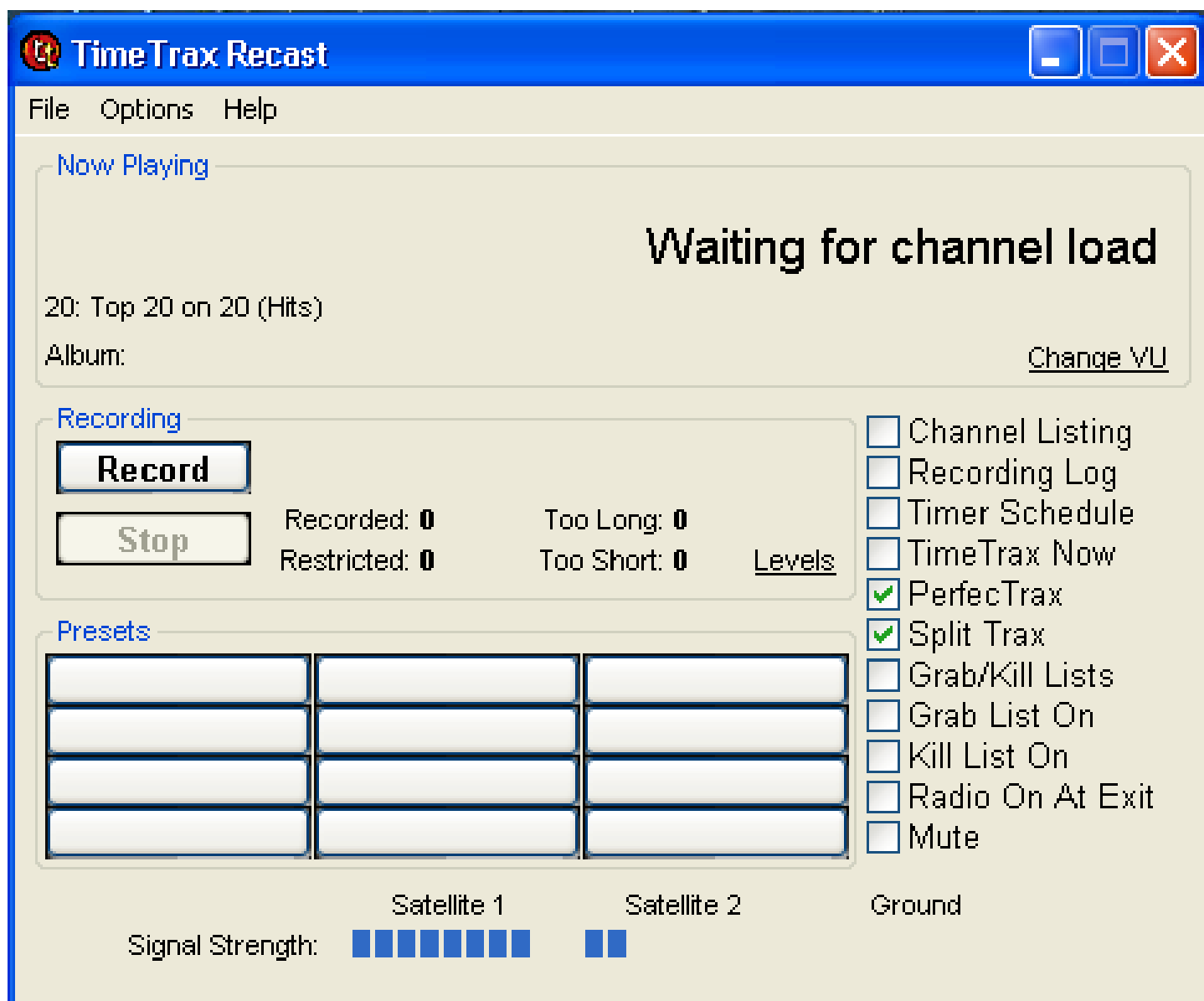
This will load this documentation locally from your PC using Adobe Acrobat.

N.B. TimeTrax Recast requires that your computer be connected to the Internet at ALL TIMES. TimeTrax Recast will not work and will shut down if there is no Internet connection.

how to use timetrax recast

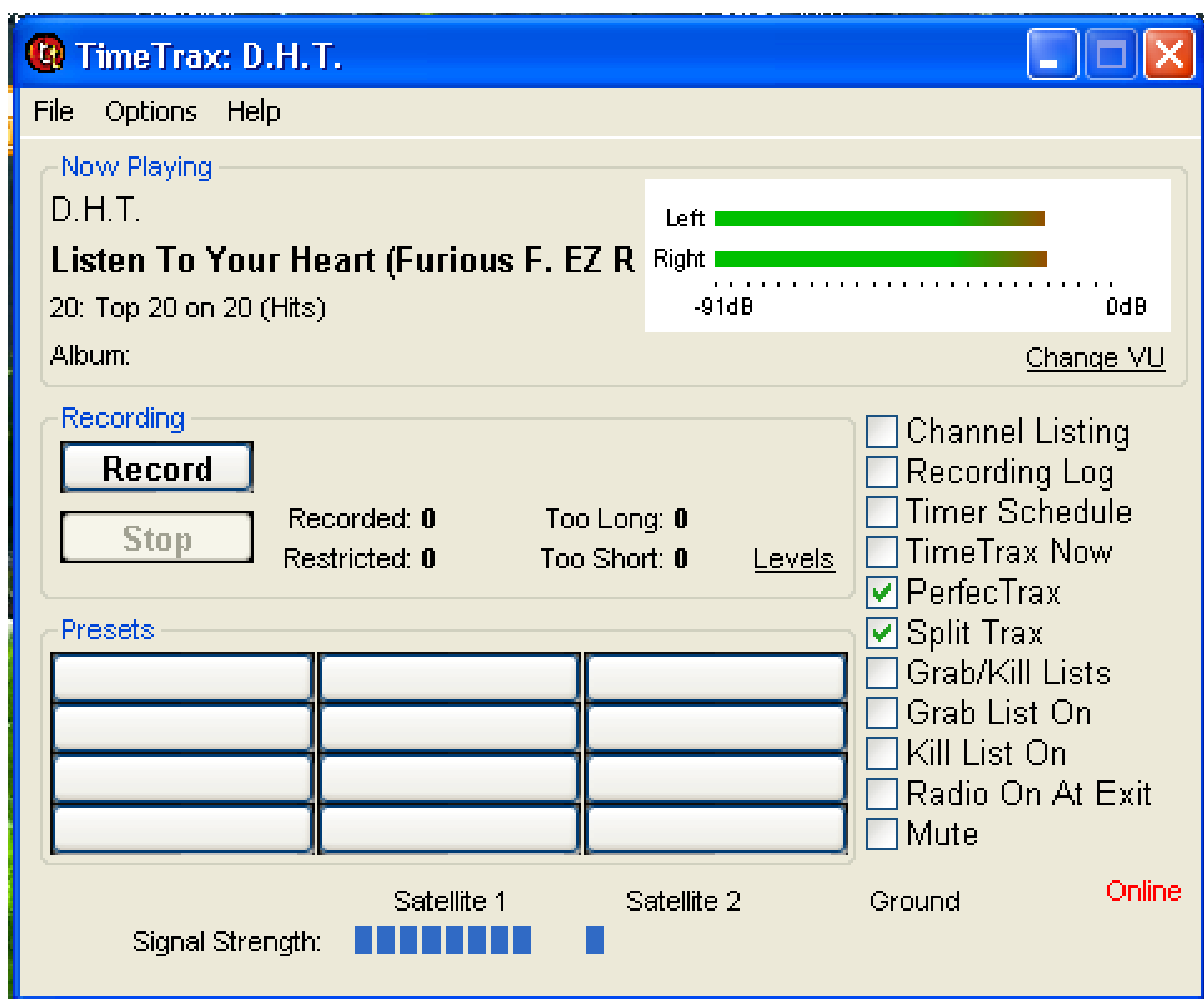
TimeTrax Recast Main Screen

When you start up TimeTrax Recast you will be presented with the main screen as seen below:



You must wait for the Channel Load to complete. Do not rush this function. The time it takes depends on many factors so if you find that it is taking too long, keep waiting.

Once the channel load completes you will be presented with the following screen:



The key elements on this screen are:

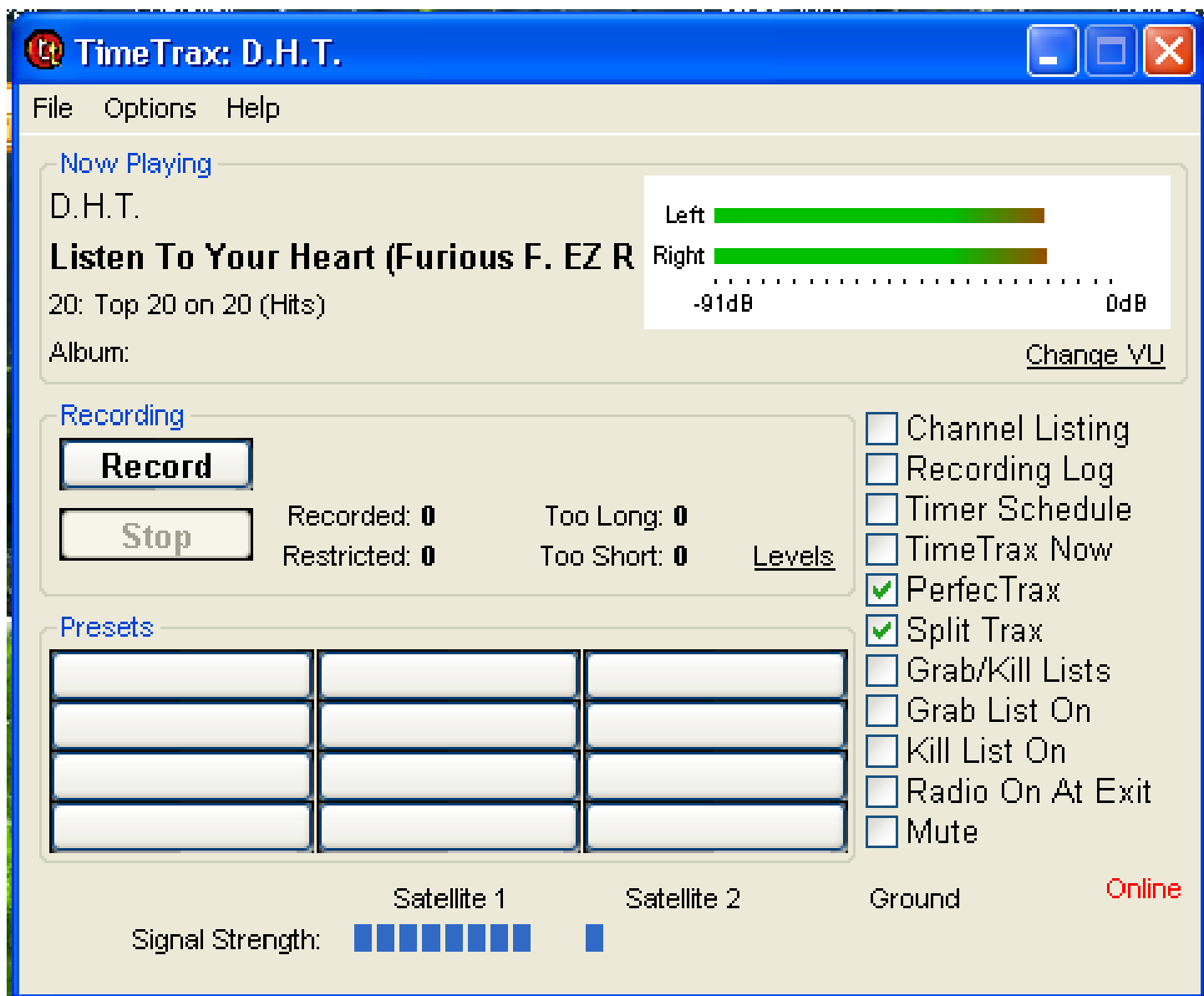
Now Playing Box

Recording Box

Presets Box

Signal Strength Box (Not applicable for XM-Online only users)

Quick Choice Menu



Now Playing Box

In this box you will see the Artist, Song, and Channel listed for what is currently playing.

You will also find the VU meters. You will want to configure your Line-In settings so that the meters just “kiss” the red. (More on this later)

You will also see the button for “Change VU”, this will allow you to change the look of the VU meters. There are several exiting versions to choose from.

Recording Box

In this box you will be able to start and stop TimeTrax Recast from recording the programming on the channel you are listening to.

It will also keep a record of how many songs it has recorded, how many were too short or too long (based on your settings), and how many were restricted.

You will also see a clickable item called "LEVELS".

This appears only when you enable the feature: GAIN ENABLED on the configuration screen.

When this feature is enabled you will be able to adjust the recording levels for TimeTrax Recast from within the program.

We encourage you to enable this feature.

Presets Box

If there are stations that you listen to often you can setup presets for a quick way to change to those channels. These are just like the radio presets you may find on your car stereo.

We will discuss how to populate the buttons later in the documentation.

Signal Strength Box (XM & Sirius Radio Users Only)

In this box you will be able to see what your Satellite strength is like. You will want to make sure you have your antenna positioned properly to achieve the best possible signal strength.

For XM and XM-Online users you will also see an **Online** indicator letting you know when you are logged into the XM-Online service.

Easy Access Options

Last but not least are the check box items you will find down the right side of the main screen.

These are some of the most popular feature of TimeTrax Recast. We put them on the main screen for easy access. They can also be found under the Options Menu.

Channel Listing Box

Before we go any further let's discuss the TimeTrax Recast Channel listing box.

When you start up TimeTrax Recast this box will also pop up and start populating.

This is what is loading during the "Channel List Loading" message. This is a complete list of all channels available to you showing Station Name, Artist, Song, Album (XM w/ On-Line turned on and XM-Online only), and Station Genre.

To choose what station you wish to listen to simply click on the channel number down the left side of the box.

The list is updated in real-time. If you wish to add a song or artist to the Grab or Kill lists you can simply double click on it in this screen. (more on Grab and Kill lists later)

Example of the Channel Listing Box

TimeTrax Recast Channels					
>	Station Name	Artist	Song	Album	Station Genre
1	XM Preview	Fungus	Xm 53		
4	The 40s	Ray Anthony & Ronnie De	Sentimental Me	Capitol Collectors Series	Decades
5	The 50s	Bill Haley & Co	Shake Rattle And		Decades
6	The 60s	Beatles	A-Z Part 12		Decades
7	The 70s	Player	This Time I'm in It for Love	Super Hits of the '70s Hav	Decades
8	The 80s	Gtr	When the Heart Rules the	Gtr	Decades
9	The 90s	Sheryl Crow	Strong Enough	Tuesday Night Music Club	Decades
10	America	George Strait	Love Without End Amen	Livin' It Up	Country
11	Nashville!	Garth Brooks	Do What You Gott		Country
12	X Country	Jimmie Dale Gilmore	Waiting for a Train	Unplugged	Country
13	Hank's Place	Homeplate	Xm 175		Country
14	Bluegrass Juncti	Seldom Scene	Wait A Minute		Country
15	Folk Village	Strawbs Acoustic	LIVE @ XM		Country
16	Highway 16	Scotty Emerick	I Can't Take You Anywhe	The Coast Is Clear	Country
20	Top 20 on 20	D.H.T.	Listen To Your Heart (Furi		Hits
21	KISS	Gwen Stefani / Eve	Rich Girl	CD Single	Hits
22	MIX	Counting Crows	Accidentally In Love	"quot;Shrek 2"	Hits
23	The Heart	Jewel	You Were Meant for Me	Pieces of You	Hits
24	Sunny	Francis Goya	Things We Did La		Hits
25	The Blend	Survivor	I Can't Hold Bac		Hits
27	Cinemagic	Army of Darkness	Joseph LoDuca		Hits
28	On Broadway	Porgy and Bess	Summertime		Hits
29	U-POP	Jem	They	Hear Music Playlist Volum	Hits
31	The Torch	Monday Morning	Sunshine		Christian
32	The Fish	Bethany Dillon	All That I Can D		Christian
33	Spirit	Bishop William Toney & Te	Any Way You Bless Me	Any Way You Bless Me	Christian
40	Deep Tracks	Poco	Pickin' Up The Pieces	Ultimate Collection	Rock
41	Bone Yard xL	Dokken	It's Not Love	Under Lock and Key	Rock

TimeTrax Recast Options

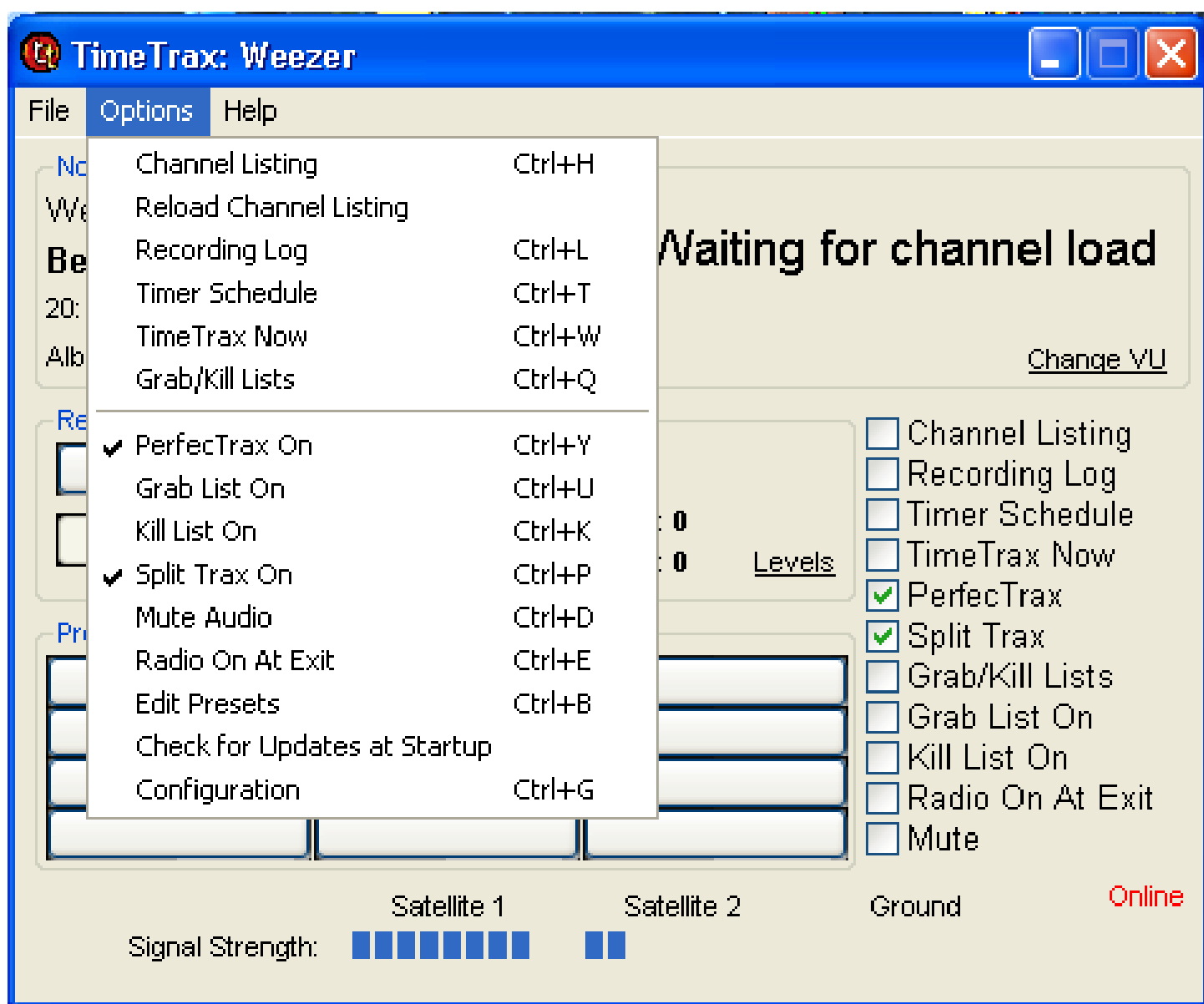
In the next few pages we will cover all of the different options available.

Channel Listing will show or hide the aforementioned Channel Listing Box.

Reload Channel Listing will clear the channel cache and reload it the next time TimeTrax Recast is started.

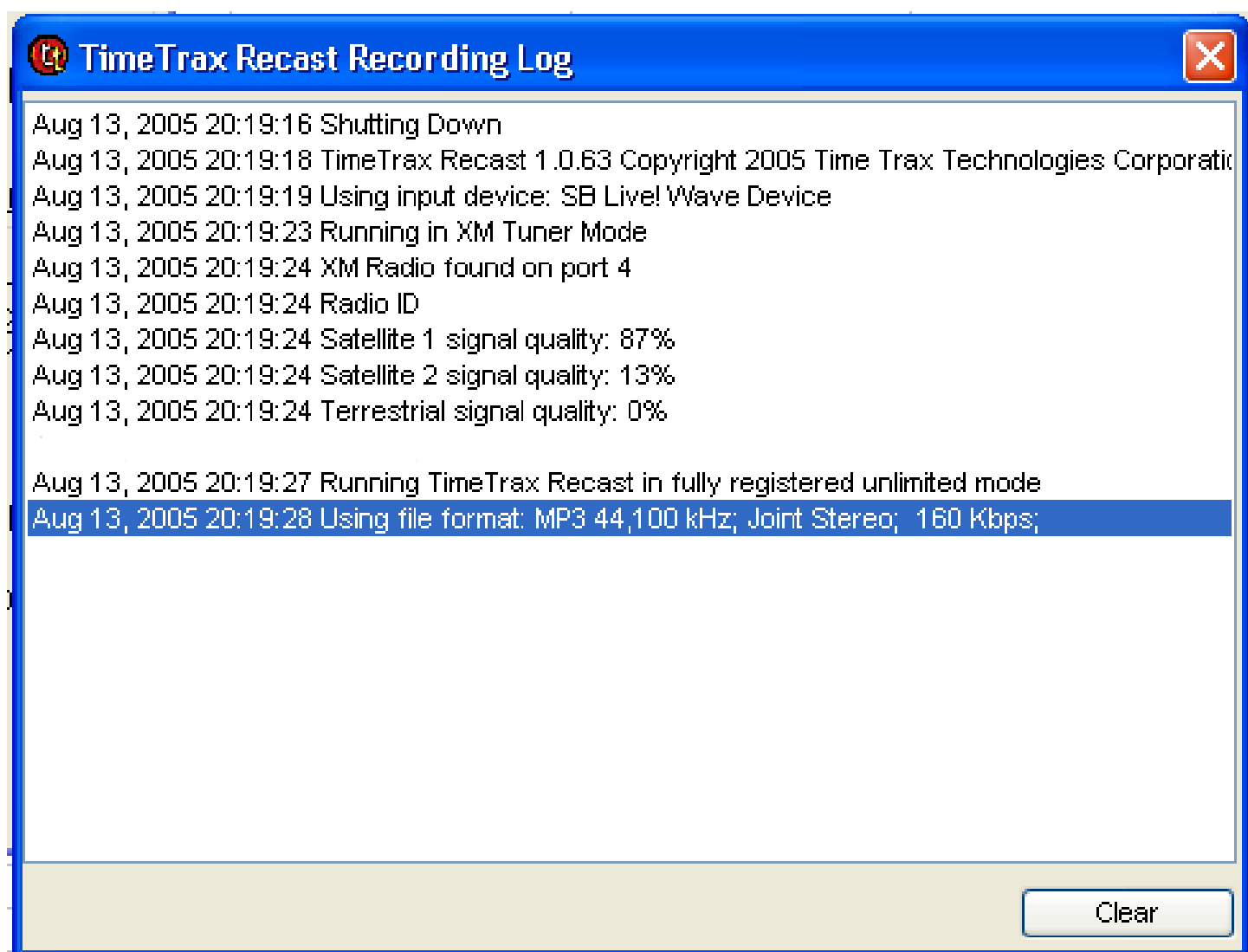
Recording Log will bring up the Log Window (as seen on the following page)

It tells you in real time all of the different functions that TimeTrax Recast is doing. Our Technical Support team will sometimes ask to see this log.



Recording Log will bring up the Log Window (as seen on the following page)

It tells you in real time all of the different functions that TimeTrax Recast is doing. Our Technical Support team will sometimes ask to see this log.



Scheduler

This feature allows you to use TimeTrax Recast to time-shift your favorite programs to listen to at a later time.

Simply fill in the chart how you would like the program to be record and push save.

Be sure to turn your scheduled program "on" using the check box on the left.

An example of what the Scheduler Screen looks like can be found on the next page.

As you can see, you can setup multiple schedules for different days and different repeat programs.

You can experiment with the scheduler to find out how it will best work for you.

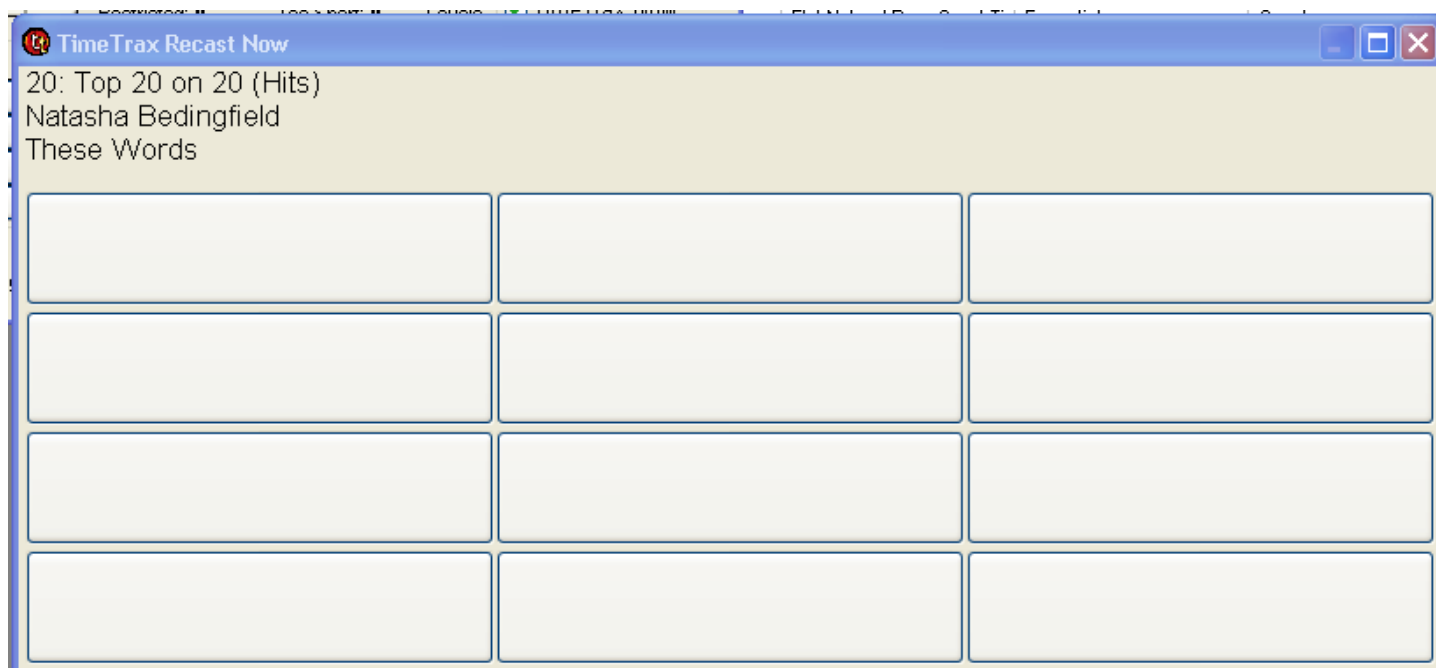
The screenshot shows the 'TimeTrax Recast Scheduler' window. It contains a table with 10 rows, each representing a scheduled recording. Each row has the following columns: a row number (1-10), a 'Clear' button, an 'On' checkbox, a 'Channel' dropdown menu, a 'Start Date' text box, a 'Start Time' spinner (hour, minute, and AM/PM), a 'Duration (hh:mm)' spinner, and three checkboxes: 'PerfectTrax', 'Split Trax', and a group containing 'Grab List' and 'Kill List'. All 'On' checkboxes are unchecked. All 'PerfectTrax' and 'Split Trax' checkboxes are checked. All 'Grab List' and 'Kill List' checkboxes are unchecked. The 'Channel' dropdown for all rows is '1 - XM Preview'. The 'Start Date' for all rows is 'Aug 13, 2005'. The 'Start Time' for all rows is 8:21 PM. The 'Duration' for all rows is 1:00. The 'End Date/Time' is displayed below each 'Start Date' as 'Aug 13, 2005 9:21 PM'. At the bottom right are 'Cancel' and 'Save' buttons.

	Channel	Start Date	Start Time	Duration (hh:mm)	PerfectTrax	Split Trax	Grab List	Kill List
1	1 - XM Preview	Aug 13, 2005	8:21 PM	1:00	<input checked="" type="checkbox"/>	<input checked="" type="checkbox"/>	<input type="checkbox"/>	<input type="checkbox"/>
		End Date/Time:	Aug 13, 2005	9:21 PM				
2	1 - XM Preview	Aug 13, 2005	8:21 PM	1:00	<input checked="" type="checkbox"/>	<input checked="" type="checkbox"/>	<input type="checkbox"/>	<input type="checkbox"/>
		End Date/Time:	Aug 13, 2005	9:21 PM				
3	1 - XM Preview	Aug 13, 2005	8:21 PM	1:00	<input checked="" type="checkbox"/>	<input checked="" type="checkbox"/>	<input type="checkbox"/>	<input type="checkbox"/>
		End Date/Time:	Aug 13, 2005	9:21 PM				
4	1 - XM Preview	Aug 13, 2005	8:21 PM	1:00	<input checked="" type="checkbox"/>	<input checked="" type="checkbox"/>	<input type="checkbox"/>	<input type="checkbox"/>
		End Date/Time:	Aug 13, 2005	9:21 PM				
5	1 - XM Preview	Aug 13, 2005	8:21 PM	1:00	<input checked="" type="checkbox"/>	<input checked="" type="checkbox"/>	<input type="checkbox"/>	<input type="checkbox"/>
		End Date/Time:	Aug 13, 2005	9:21 PM				
6	1 - XM Preview	Aug 13, 2005	8:21 PM	1:00	<input checked="" type="checkbox"/>	<input checked="" type="checkbox"/>	<input type="checkbox"/>	<input type="checkbox"/>
		End Date/Time:	Aug 13, 2005	9:21 PM				
7	1 - XM Preview	Aug 13, 2005	8:21 PM	1:00	<input checked="" type="checkbox"/>	<input checked="" type="checkbox"/>	<input type="checkbox"/>	<input type="checkbox"/>
		End Date/Time:	Aug 13, 2005	9:21 PM				
8	1 - XM Preview	Aug 13, 2005	8:21 PM	1:00	<input checked="" type="checkbox"/>	<input checked="" type="checkbox"/>	<input type="checkbox"/>	<input type="checkbox"/>
		End Date/Time:	Aug 13, 2005	9:21 PM				
9	1 - XM Preview	Aug 13, 2005	8:21 PM	1:00	<input checked="" type="checkbox"/>	<input checked="" type="checkbox"/>	<input type="checkbox"/>	<input type="checkbox"/>
		End Date/Time:	Aug 13, 2005	9:21 PM				
10	1 - XM Preview	Aug 13, 2005	8:21 PM	1:00	<input checked="" type="checkbox"/>	<input checked="" type="checkbox"/>	<input type="checkbox"/>	<input type="checkbox"/>
		End Date/Time:	Aug 13, 2005	9:21 PM				

TimeTrax Now

Use this option to setup the main screen presets as discussed earlier.

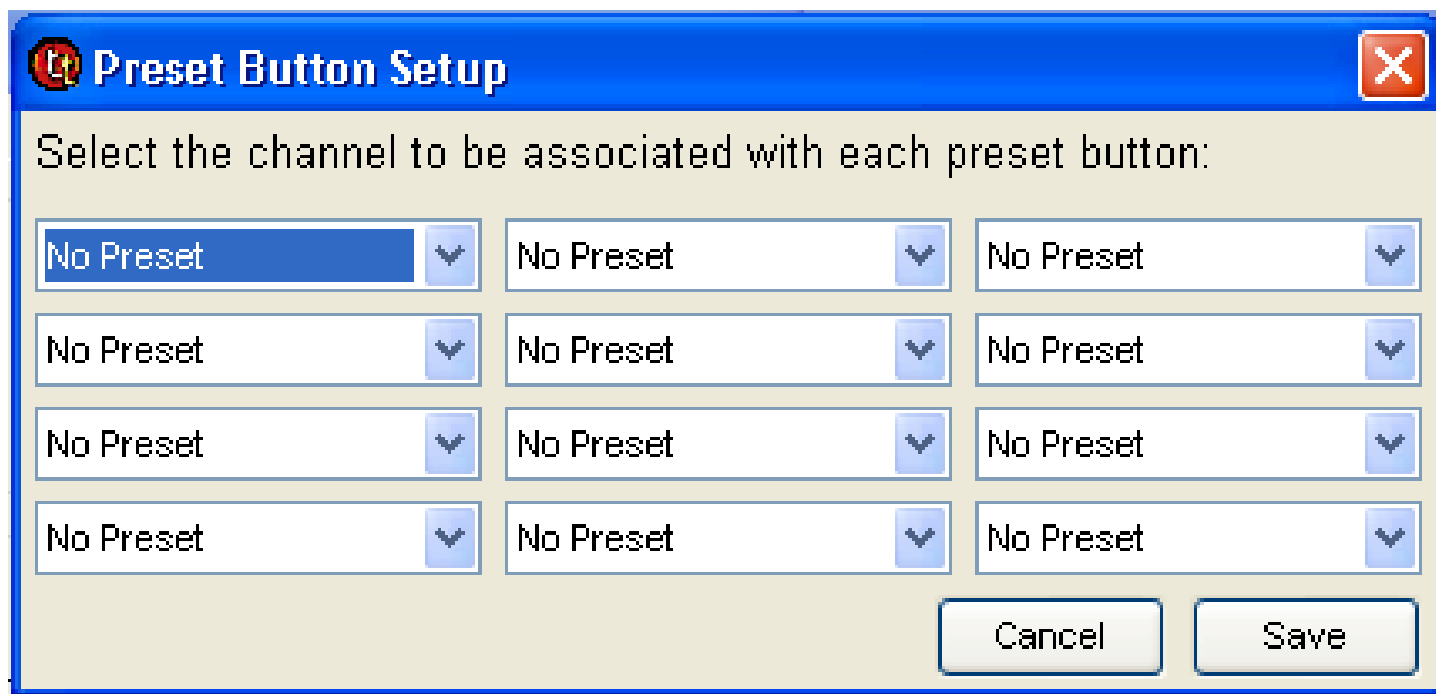
When you start TimeTrax Recast for the first time the boxes will be blank.



TimeTrax Recast Now

20: Top 20 on 20 (Hits)
 Natasha Bedingfield
 These Words

Click on an empty button and you will be presented with the Preset Button Setup Screen. Use the pull downs to put in the channels you wish to "preset".



Preset Button Setup

Select the channel to be associated with each preset button:

No Preset	No Preset	No Preset
No Preset	No Preset	No Preset
No Preset	No Preset	No Preset
No Preset	No Preset	No Preset

Cancel Save

Here is an example of a filled in Setup

Select the channel to be associated with each preset button:

5 - The 50s	229 - Orlando	24 - Sunny
6 - The 60s	22 - MIX	45 - XM Cafe
8 - The 80s	23 - The Heart	50 - The Loft
170 - FAMILYTALK	27 - Cinemagic	53 - Fungus xL

Cancel Save

Once you push Save the buttons will populate.

You will also see that the buttons on the main screen of TimeTrax Recast will be populated.

TimeTrax Recast Now

20: Top 20 on 20 (Hits)
Natasha Bedingfield
These Words

5 - The 50s Bobby Vinton Roses Are Red (My Love)	229 - Orlando T-Storms 77 Degrees	24 - Sunny Skitch Henderson How Deep Is The Ocean
6 - The 60s Beatles A-Z Part 12	22 - MIX Green Day Blvd. Of Broken	45 - XM Cafe Cake The Guitar Man
8 - The 80s Gloria Estefan Bad Boys	23 - The Heart Michael Bolton Soul Provider	50 - The Loft Dar Williams Echoes
170 - FAMILYTALK Chronicles of Narnia	27 - Cinemagic Malcolm X Terence Blanchard	53 - Fungus xL Social Distortion So Far Away

Grab/Kill List

In this screen you can set TimeTrax Recast to only save recordings from certain artists, or certain songs.

You can also set up TimeTrax Recast to never save recordings from certain artists or certain songs. Simply enter them in the appropriate list.

You can also add songs and artists by double clicking on them in the Channel Listing screen.

TimeTrax Recast Grab/Kill Lists

Only record songs that contain:		Never record songs that contain:	
In the Artist Name:	In the Song Name:	In the Artist Name:	In the Song Name:
Blondie Supertramp U2	Enter Sandman Pass the Dutchie Touch Me	Air Supply Barry Manilow Sergio Mendes	Wind beneath my Xanadu
Or		Or	
<input type="text"/>	<input type="text"/>	<input type="text"/>	<input type="text"/>
<input type="button" value="Clear"/> <input type="button" value="Delete"/> <input type="button" value="Add"/>	<input type="button" value="Clear"/> <input type="button" value="Delete"/> <input type="button" value="Add"/>	<input type="button" value="Clear"/> <input type="button" value="Delete"/> <input type="button" value="Add"/>	<input type="button" value="Clear"/> <input type="button" value="Delete"/> <input type="button" value="Add"/>
			<input type="button" value="Cancel"/> <input type="button" value="Save"/>

Perfect Trax On

Perfect Trax makes sure that when you record songs you get the entire song. If you press the record button while listening to a channel TimeTrax Recast will either wait for the next song before recording (if the song was not played in its entirety before pressing record) or it will go back in time and record the song from the beginning. See the illustration on the next page, you will see the message "Waiting for next song" This is PerfectTrax in action.

Grab List On

This will turn on the Grab List as discussed prior

Kill List On

This will turn on the Kill List as discussed prior

Split Trax On

Turning SplitTrax on will cause TimeTrax Recast to analyze the recordings and divide them into separate songs. If you turn this feature off your recording will be one large file

Mute Audio

This will mute your radio so that no sound can be heard through the speakers.

Radio on at Exit

Some users like to keep their radio running even when TimeTrax is shut down. If you would like to do this simply check this option. The computer will need to remain on for the sound to play through the speakers. This is for XM hardware users only.

Edit Presets

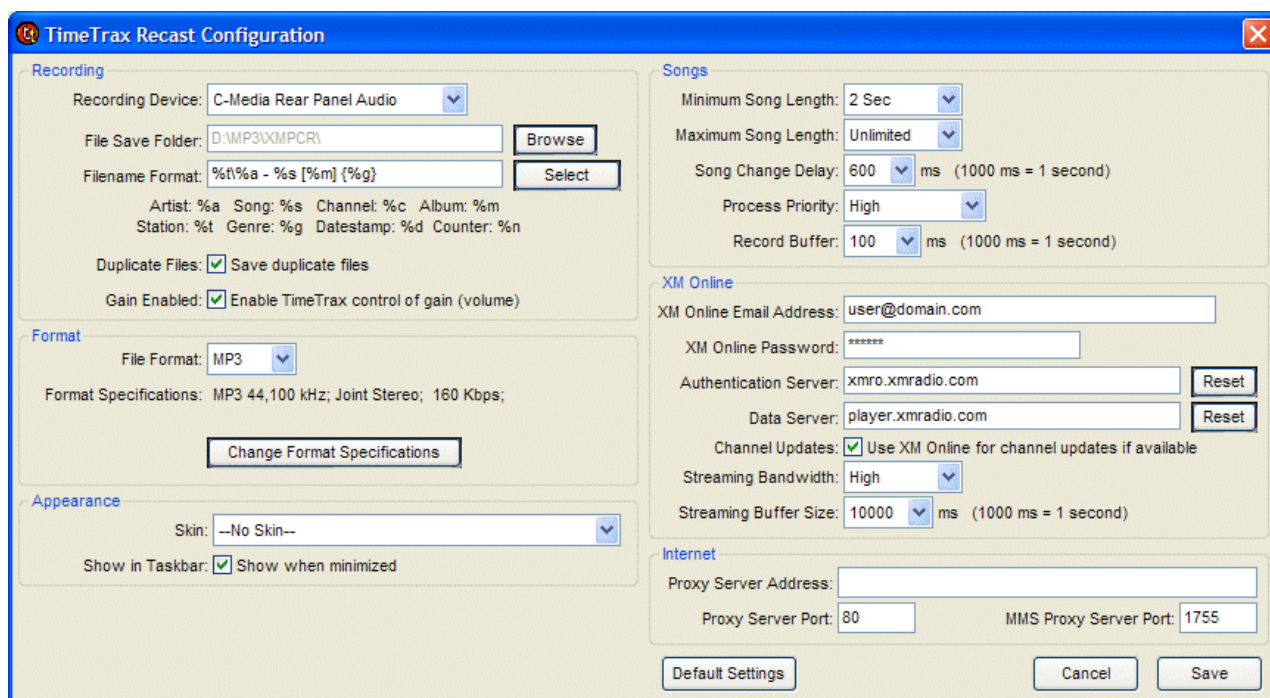
Using this option will allow you to edit the presets as previously discussed.

Check for Updates at Startup

Using this option will force TimeTrax Recast to check with our servers on start up to see if we have released a new version and give you the ability to download it.

Configuration

The following section will discuss all of the configuration choices for TimeTrax Recast.

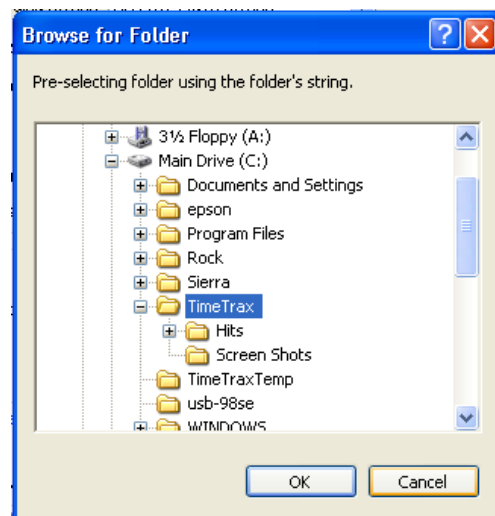


Recording Device

You must specify to which recording device you wish to use to record the radio broadcasts. Before recording, you must also adjust your mixer settings.

File Save Directory

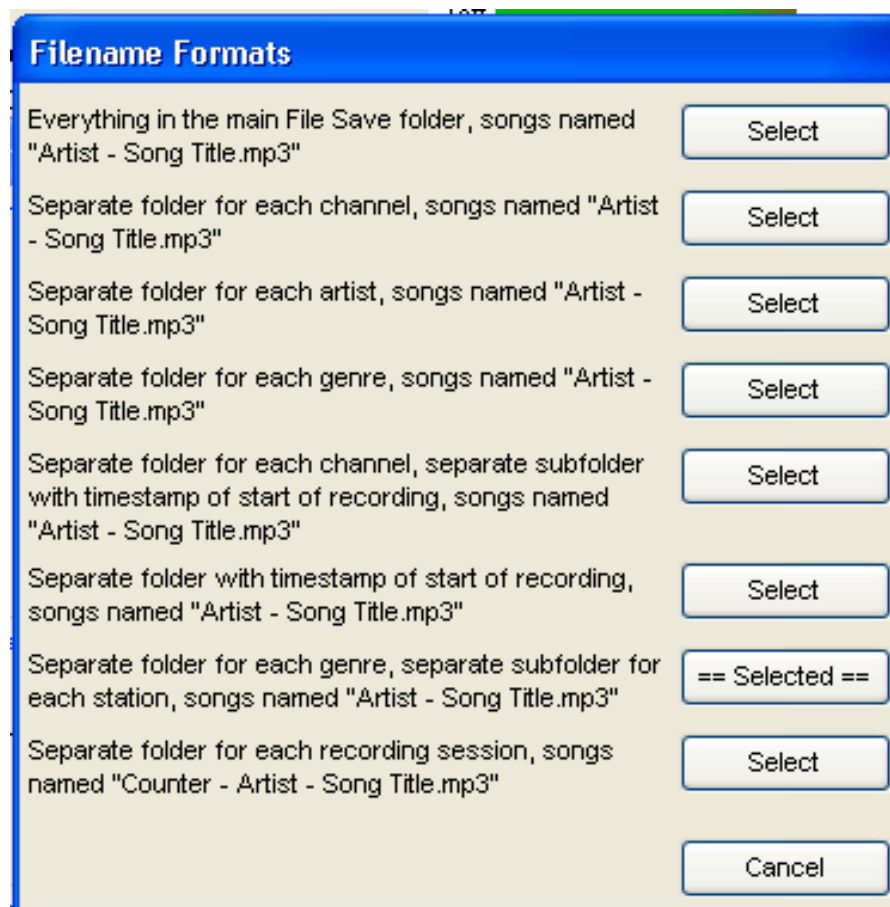
This is the directory in which your recorded files will be saved. Select the directory by clicking the Browse button.



Filename Format

You can specify the format of the file that is written out.

If you don't want to create your own format you can choose from our pre-determined presets as seen below.



Duplicate Files

If you would like TimeTrax Recast to save multiple versions of the same song you can put a check in the box.

Gain Enabled

Using this option will give TimeTrax Recast the ability to control the recording properties within TimeTrax. **We recommend you use this feature.**

Format

Using the pull down menu you can change the type of file that TimeTrax Recast creates. Choose the file format that you wish to have your files saved as.

Internet Settings

If you require a Proxy to connect to the Internet then enter your proxy information into the appropriate boxes and TimeTrax will use that Proxy info to connect to the streaming server.

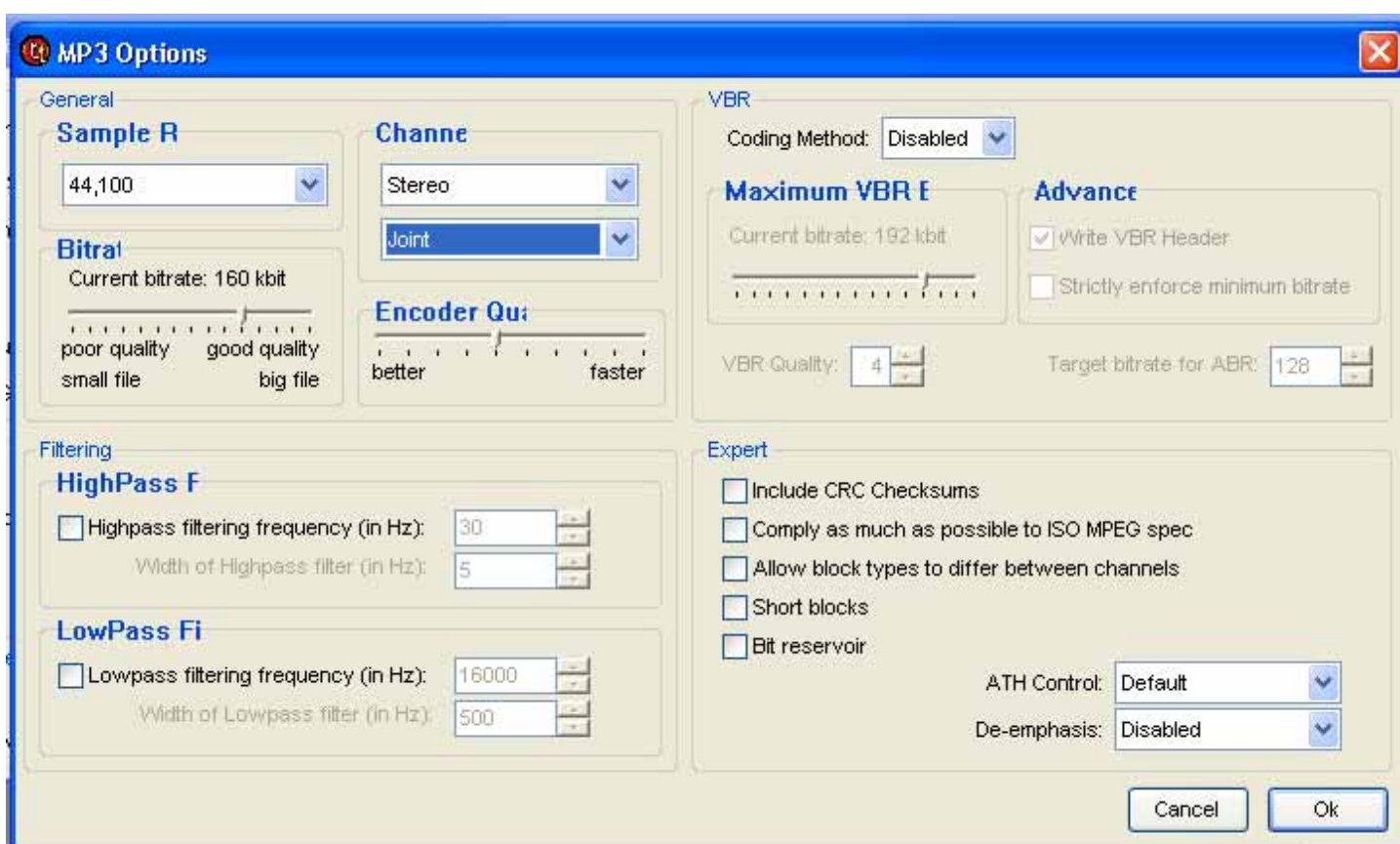
Recording Format Specifications

On this screen you can change how the recordings are being saved and created. The default settings work the best but if you wish to tweak the settings for your particular needs you can.

These settings are for advanced users only, just because we are showing it to you doesn't mean you need to change any of these settings.

TimeTrax does not support the changing of these settings and you do so at your own risk.

We call these our "Geek" settings.



Appearance

Using the pull down you can choose from several different "Skins" to change the look of your TimeTrax Recast windows. Using skins does require some extra speed and memory on your PC. If you experience problems or unacceptable slowdowns while using Skins we suggest you turn them off and run "Skinless".

Appearance

Using the pull down you can choose from several different “Skins” to change the look of your TimeTrax Recast windows. Using skins does require some extra speed and memory on your PC. If you experience problems or unacceptable slowdowns while using Skins we suggest you turn them off and run “Skinless”.

Songs Configuration Menu

Minimum Song Length

This setting will allow you to specify the minimum length a song can be so that PerfectTrax will know whether or not to save the file. This is great to strip out commercials, DJ banter, and other undesirable recordings.

Maximum Song Length

This setting will allow you to specify the maximum length a song can be so that PerfectTrax will know whether or not to save the file. This is perfect for eliminating all really long songs such as the 15 min version of In-a-god-a-da-vida. Most users leave this as “Unlimited”

Song Change Delay

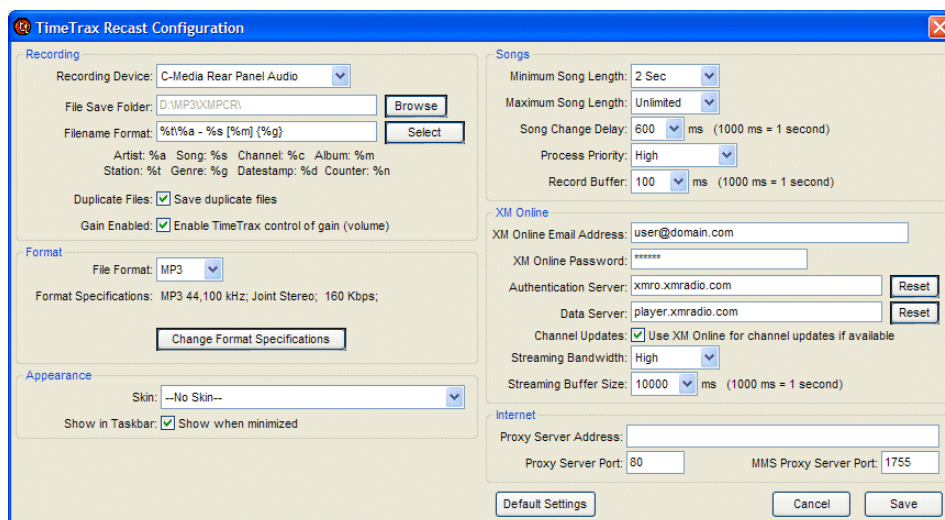
This setting is used to help TimeTrax Recast to properly capture the start of each song. This setting works with PerfectTrax when you are slicing your recordings into separate songs. Satellite radio services broadcast the name of the next song before it starts playing. This setting will help offset that change.

Process Priority

This setting is used to control how much CPU processing is given to TimeTrax Recast. The more power you give it the better it works, but the slower your computer may work while doing other things. We recommend that you set this to HIGH.

Record Buffer

TimeTrax uses a 100 ms (1/10th of a second) buffer to record the audio. This means it takes the audio in 100ms chunks, encodes it, then starts on the next chunk. If you are losing samples causing glitches or skips in the recorded audio, the buffer size can be increased. Larger buffer sizes will result in more sluggish VU meter response and less accurate song slicing



TimeTrax Recast Configuration

Recording

Recording Device: C-Media Rear Panel Audio

File Save Folder: D:\MP3\XMP\PC\R\ **Browse**

Filename Format: %t%a - %s [%m] [%g] **Select**

Artist: %a Song: %s Channel: %c Album: %m
Station: %t Genre: %g Datestamp: %d Counter: %n

Duplicate Files: ☒ Save duplicate files

Gain Enabled: ☒ Enable TimeTrax control of gain (volume)

Format

File Format: MP3

Format Specifications: MP3 44,100 kHz; Joint Stereo; 160 Kbps;

Change Format Specifications

Appearance

Skin: --No Skin--

Show in Taskbar: ☒ Show when minimized

Songs

Minimum Song Length: 2 Sec

Maximum Song Length: Unlimited

Song Change Delay: 600 ms (1000 ms = 1 second)

Process Priority: High

Record Buffer: 100 ms (1000 ms = 1 second)

XM Online

XM Online Email Address: user@domain.com

XM Online Password: *****

Authentication Server: xmro.xmradio.com **Reset**

Data Server: player.xmradio.com **Reset**

Channel Updates: ☒ Use XM Online for channel updates if available

Streaming Bandwidth: High

Streaming Buffer Size: 10000 ms (1000 ms = 1 second)

Internet

Proxy Server Address:

Proxy Server Port: 80 MMS Proxy Server Port: 1755

Default Settings **Cancel** **Save**

XM Online Configuration Menu (XM and XM-Online users only)

XM Online Email Address & Password

In this box you would put your XM On-Line e-mail address and password as issued from XM. Our system also uses this for authentication for XM-Online subscribers.

Authentication Server

Do not change this setting unless instructed by Technical Support

Data Server

Do not change this setting unless instructed by Technical Support

Channel Updates

By checking this box TimeTrax Recast will use the XM-Online service to update the channel listings instead of the radio hardware. This setting is preferred as it will be faster and will allow more information to be coded into the recording. (Album information for example)

Streaming Bandwidth

Depending on your internet connection you can specify how much bandwidth you wish TimeTrax Recast to use. When you choose "High" your recordings will be 64K and in "Low" they will be 32K

Streaming Buffer Size

If you are getting a lot of dropouts due to poor network connectivity, you can increase the buffer size.

When you are using XM-Online you will see a red ONLINE indicator on the main screen.

If you are running any type of Software Firewall such as Norton, Windows, or other you will need to make TimeTrax Recast a "Trusted Application". If not XM-Online will not work and you will get an error code because TimeTrax Recast will not be able to log in.



troubleshooting

When I Start Up TimeTrax, it Says, "Radio Not Found!"

First, ensure you have a satellite radio receiver compatible with TimeTrax. For a list of compatible receivers, please visit <http://www.timetraxtech.com/>

If the green light on the TimeTrax box is not flashing perform the following:

1. Right click, "My Computer" (it's either in your start menu or on your desktop) and choose, "properties".
2. Click the "Hardware" tab.
3. Click the "Device Manager" button.
4. In the Device Manager, if there is a branch expanded showing a black exclamation point in a yellow circle in front of a TUSB device or USB COM Port device, you will need to manually install the TimeTrax drivers. Otherwise, check to ensure your AC wall adapter is functioning properly.

If you need to install the drivers manually, perform the following steps (TimeTrax requires two drivers. You may need to perform these steps twice):

1. Download the drivers from <http://www.timetraxtech.com/drivers.zip> and save the file to your desktop.
2. Double click the file and unzip it to a temporary location on your computer.
3. In the Device Manager (from step 3 above), right click on the item with the exclamation point and choose, "Update Driver".
4. Follow the wizard and choose to specify a location to look for the driver. Specify the location where you unzipped drivers.zip.
5. Repeat from step 4 if you still have an exclamation point shown in your device manager.

If the green light on the TimeTrax box is flashing perform one or more of the following:



troubleshooting

Solution #1

On some computers, a conflict arises in the device manager with the "Serial Mouse". This can easily be alleviated by performing the following:

1. Right click, "My Computer" (it's either in your start menu or on your desktop) and choose, "properties".
2. Click the "Hardware" tab.
3. Click the "Device Manager" button.
4. On the right hand side, expand the item titled, "Mice and Other Pointing Devices."
5. If you see an item called Microsoft Serial Mouse, right click on it and choose disable. (If you do not see a serial mouse, you can jump to the next potential solution.)
6. Reboot your computer and open TimeTrax.

Solution #2:

1. Reboot your computer.
2. Right click, "My Computer" (it's either in your start menu or on your desktop) and choose, "properties".
3. Click the "Hardware" tab.
4. Click the "Device Manager" button.
5. In the right-hand pane, expand the "Ports (COM & LPT)" item.
6. One of the lines should read "USB Serial Port (COMx)" where x is a number. Please write down this number.
7. Close the "Computer Management" window.
8. Click on Start and choose "run".
10. Type "command" and press enter.
11. Change directories to your TimeTrax installation directory by typing "cd c:\progra~1\timetrax" and press enter. (if you specified a different installation directory at setup, you will need to change to that directory instead)
12. Now, type "timetrax /port x" where x equals the number you wrote down from ste 5 and press enter.

Solution #3:

1. Unplug the USB cable from the back of the computer and re-insert it into another USB port.
This will force the drivers to reload
We find that this fixes the problem 9 out of 10 times



troubleshooting

My Recordings Contain a Humming Sound

This may be due to a ground loop issue. First, make sure your computer, speakers, and TimeTrax AC adapter are all plugged into the same power strip.

Alternatively, you can purchase a ground loop isolator from the TimeTrax store at <http://www.timetraxtech.com> or your local electronics store.

If you continue to have problems, see the “How to Get Help” section to contact support.

When I turn on my TimeTrax Recast it only shows a couple of channels, I registered with the Radio Vendor and they said it was activated but...

It can take up to 24 hours for the Radio to be activated. Once they send the command to activate your radio it must be turned on and receiving a signal; if it does not activate within 24 hours you should call and ask them to resend the activation. Also ensure that your antenna has a clear view of the south sky before requesting activation again.

Registering & Using TimeTrax Recast

In order to register and use our product you must be connected to the internet.

My Song Cuts are not Perfect

Song cuts are based on the Channel Listing information. It is 100% determined by the Radio Broadcaster. Not all channels update the channel listing the same and not all channel listing changes are “timely”. There is nothing that we can do about this and it is the nature of Satellite radio. There are settings on the config screen that you can adjust to make it better but you will have to experiment as each channel and program is different.

When recording I sometimes see “restricted” songs. What’s up with that?

If you get a “Restricted” message it means that you have turned on the Kill/Grab list and it is essentially restricting songs that either don’t match or you have blocked.

To allow all programming to be recorded you would need to turn off the Kill/Grab feature.



troubleshooting

My Recordings are Blank

In your TimeTrax configuration, make sure the "Recording Device" is set to whichever sound card you have your Radio plugged into. Open your mixer as described here. When switching to the "Record" or "Capture" mixer, make sure that the "Mixer Device" is set to the same "Recording Device" that you selected within TimeTrax.

Then make sure that the "Line In" (or whatever input you have your XM Radio plugged into) is both selected and turned up.

You can be sure that it is the "Line In" input if that is the one you use on the "Playback Mixer" to adjust the volume of the Radio that you hear through your PC speakers.

Also, make sure that the sound output from your Radio is actually connected to your PC's Line Input in the first place. If the output of your XM PCR is connected to your stereo, there is no way for your PC to record it.

Using XM-Online requires your sound card to support internal recording.

Verify that the drivers and software are up to date. This may require you to go to the vendor website and download the latest drivers AND recording software.

Other settings you can try:

- 1) Go to the Config Screen and put a check mark in the "Gain Enabled" box.
- 2) This will put on the main screen a "levels" button
- 3) Press the "Levels" button and a recording levels screen will pop up.
- 4) You want to make sure you are recording from the proper stream.
- 5) You will want to experiment with different settings to see which one works for you.
- 6) On the config screen make sure your sound card in in the Recording Device pull down

Look for something called: "What you hear", "Stereo Mix", "Recording Mixer", or "Wave" It will depend on your sound card as to what the choice will be.

Can I use my Sirius Radio and XM Radio at the same time?

Right now, Sirius and XM work completely independently of each other. The application does not have the capabilities to handle the communications with both systems at the same time. They can only have one hooked up to their computer at the same time.



troubleshooting

Norton Anti-Virus / Worm Blocking is interfering with TimeTrax Recast

Follow the following steps:

Start the Norton Internet Security program by clicking Start and then [All] Programs.

From there, find the Norton Internet Security program group and subsequently the Norton Internet Security program.

You can also start this program by right-clicking its icon in your system tray (it's a yellow circle with a black grid in it) and choosing Open Norton Internet Security.

Once the program is loaded (it sometimes takes a moment or two) click Personal Firewall.

Then, click Configure and click the Programs tab.

Under Manual Program Control, you'll see a list of programs that NIS is monitoring.

Click Add.

Then, browse to the TimeTrax Recast program directory under My Computer. Its default location is C:\Program Files\TimeTrax Recast

Now, click the TimeTrax.EXE file and click Open.

In the dialog that pops up, choose Permit and click OK.

XM-Online settings won't let me log in or reports an error

If XM-Online doesn't work or won't accept your credentials it may be due to a software firewall.

You will need to make TimeTrax Recast a "Trusted" application for that firewall. Check your software manual for how to do this.

For Hardware firewalls turn off SPI or put the TimeTrax PC in a DMZ. If you are unsure how to do this check with the manufacturer of the hardware.



troubleshooting

What the heck is all this SAT1, SAT2 and Ground stuff?

Sat 1 and Sat 2 are just that - there are two separate satellites broadcasting the same signal, one from the east coast, one from the west coast. The signal levels are showing how much is being received from each satellite.

The ground is from terrestrial repeaters, usually installed in large cities. The repeaters transmit the same signal as the satellites.

The satellite signals are line of sight - you have to be able to "see" the satellite with nothing blocking it (buildings, trees) to pick it up. The terrestrial repeater signal is like a regular radio station - so if you are in a city where buildings frequently block the satellites, the repeaters will still get through and you won't lose signal.

If you're not in a major city, your "ground" signal will most likely be at zero.

Will I have to upgrade my sound card / What sound cards does TimeTrax Recommend?

We don't want to get into a debate over what sound cards are better than others but as far as compatibility we do find that SoundBlaster brand of sound cards work very well with our product.

We do have issues with many of the "on-board" sound cards and "generic" or "No-Name" sound cards that are out in the market.

The reason for the issues is that they are usually not as feature rich or the software drivers are not as sophisticated as the larger "name-brand" cards.

We are not saying that you have to upgrade your sound card, however for the best possible results in recording we do suggest that a good quality sound card be used.

Copy the contents of the debug file into your support ticket.

timetrax recast beta testing

TimeTrax Corporation Inc. has started a public beta program that everyone is welcome to participate in.

As we develop our product, whether it be new features, or to accommodate new hardware, operating systems, or changes in the world of Satellite radio we will look to you to help us develop a product you will be proud to own and use for years to come.

Our public beta page can be found here:

http://www.timetraxtech.com/tt_support_betaapp.asp

We encourage you to visit this page and check for new beta releases when they are launched.

Of course the use of a Beta version means that it may not be as stable as a full release version but it will give you a chance to try out and have access to some of the latest features that we are working on.

We encourage you to send feedback on beta versions to: bugreports@timetraxtech.com

For the Beta versions if you do encounter issues we welcome you to send us debug reports from the software.

To create a Debug File start TimeTrax this way:

- 1) Start - Run - Type In: CMD (press enter)
- 2) In the dos box type: cd\ (press enter)
- 3) Then type: cd program files\timetrax recast (press enter)
- 4) Type: timetrax.exe /debug (press enter)

Let TimeTrax Recast run for a while. Let it capture some files and produce the error you are experiencing.

On your C drive in the root directory there will be a .txt file that TimeTrax creates.

Simply e-mail that to the above e-mail address along with a description of the issue and we will forward it to the developers.

how to get help

If you are having any trouble with your TimeTrax purchase Open a support ticket at: http://www.timetraxtech.com/tt_support_contact_support.asp The interactive technical support system allows us to help you most efficiently and keeps track of all the correspondence, information, and solutions automatically. You can use the username and password that you created to make your purchase to login to the support system.

If TimeTrax Recast is crashing or the software is causing you issues we would really like to see a debug of what is going on.

To create a Debug File start TimeTrax this way:

- 1) Start - Run - Type In: CMD (press enter)
- 2) In the dos box type: cd\ (press enter)
- 3) Then type: cd program files\timetrax recast (press enter)
- 4) Type: timetrax.exe /debug (press enter)

Simply copy and paste the contents of that debug file into your support ticket.

The typical turn around time for support tickets is 48 hours. There may be delays in answering your support ticket on holidays and weekends. We will do our best to correct your issues and get you up and running. Most of the time it is a simple configuration issue.

If our online tech support team has not been able to resolve your problem within a reasonable amount of time, your support representative can refer you to our telephone support center.

Please note:

Telephone support is only available after attempts to solve your problem via the online support system have been unsuccessful. You will be required to provide your problem ID# and a support authorization code from your support representative.

timetrax supports the

lance armstrong foundation



Founded in 1997, The Lance Armstrong Foundation provides information and support to young cancer survivors and their families.

Open up any TimeTrax order and you'll find a yellow wristband inside the box. That's because for every TimeTrax order you place, TimeTrax donates \$1 to the Lance Armstrong Foundation.

To find out more about the Lance Armstrong Foundation, please visit <http://www.laf.org/>

WEARYELLOW LIVESTRONG

Time Trax Technologies Corporation
12154 Darnestown Road, Suite 440
North Potomac, MD 20878
<http://www.timetraxtech.com> - info@timetraxtech.com