



ALiEditor User Manual

1.1

2007-3-19

ALI CONFIDENTIAL

THIS DOCUMENT CONTAINS PROPRIETARY TECHNICAL INFORMATION WHICH IS THE PROPERTY OF ALI CORPORATION AND SHALL NOT BE DISCLOSED TO OTHERS IN WHOLE OR IN PART, REPRODUCED, COPIED, OR USED AS THE BASIS FOR DESIGN, MANUFACTURING, OR SALE OF APPARATUS WITHOUT WRITTEN PERMISSION OF ALI CORPORATION

Change History

Revision	Issue Date	Comments
1.0	2006-12-7	First Release for ALiEditor v1.0.2
1.1	2007-3-19	AliEditor v1.0.7_TF,add upload .udf/.ddf

ALI CONFIDENTIAL

Contents

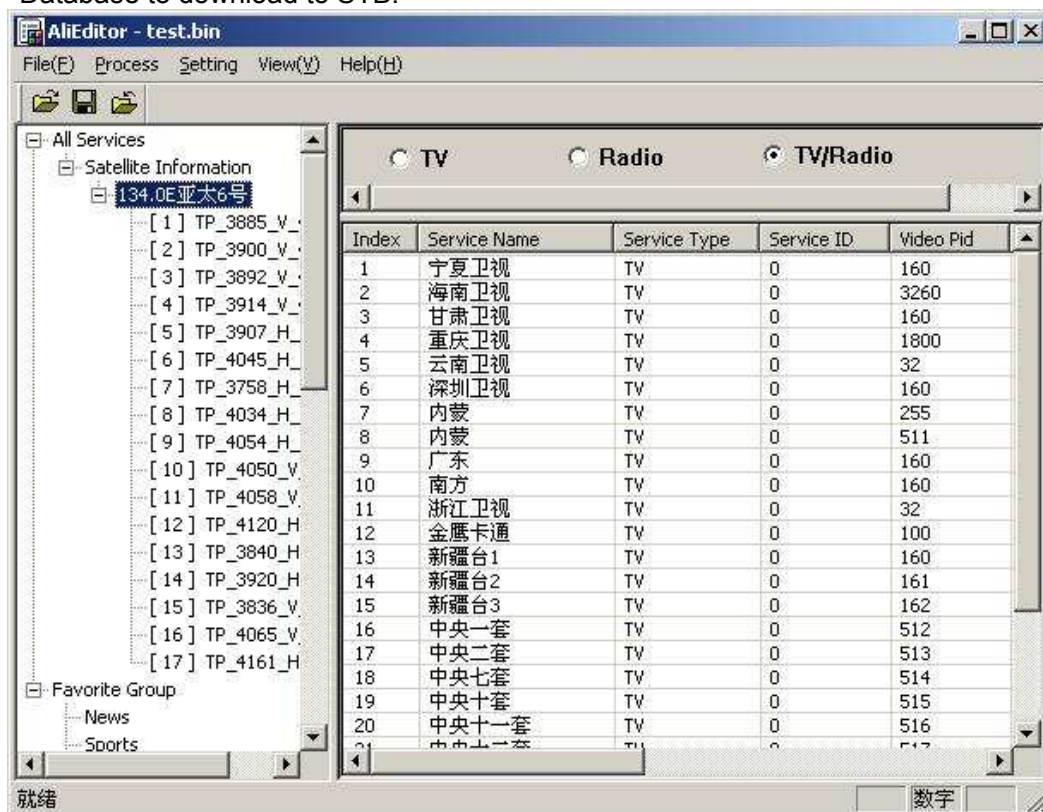
1	Introduction.....	1
1.1	Summary.....	1
1.2	Files.....	1
2	Operation.....	2
2.1	Open.....	2
2.2	Browse.....	3
2.3	Edit.....	3
2.3.1	Satellite.....	3
2.3.2	TP.....	4
2.3.3	Program.....	4
2.3.4	Favorite Group.....	5
2.4	Save.....	6
2.5	Export.....	6
2.6	Download File.....	6
2.7	Download.....	7
2.8	Upload.....	7

1 Introduction

1.1 Summary

ALi Editor is designed for updating the Default Database of STB Flash. It can also update the User Database because user is very troubled to use remote to edit the User Database.

The ALi Editor data source can be from *.abs/*.ddf file or *.sdx/*.txt. User can create the data source by Manually Edit the ALi Editor or Auto Scan using STB device to get the User Database, also can download the Satcodx data from the web. User can expediently select the Default Database or User Database to download to STB.



Pic. (I-1)

1.2 Files

.abs: The data file created by IDE Tool. Or the data file uploaded from STB Flash to PC.

.ddf: The data file only include Default Database. It can be merged with other data using certain tool.

.sdx: The file with Satcodx data format.

.txt: The file transferred by a excel with certainly format.

Below is the excel format:

* --- add "*" before a satellite

; --- add ";" to remark one line

*Satellite Name	22K	12V	DiSEqC_Port			LNB_FRQ	LNB_POWER					
Channel Name	Teletxt pid	Video pid	Audio pid1	Audio pid2	Audio pid3	pcrpid	Frequency	Symbol Rate	Polarization	Level	Factory	TV/Radio
*134.0E Asia VI	0	0	0			5150	1					
CCTV-2	8191	513	660	8191	8191	8190	3840	27500	H	0	1	1
CCTV-7	8191	514	670	8191	8191	8190	3840	27500	H	0	1	1
CCTV-10	8191	515	680	8191	8191	8190	3840	27500	H	0	1	1
CCTV-11	8191	516	690	8191	8191	8190	3840	27500	H	0	1	1
CCTV-12	8191	517	700	8191	8191	8190	3840	27500	H	0	1	1

Save the excel file with “Text File (Table compart)” to a txt file.

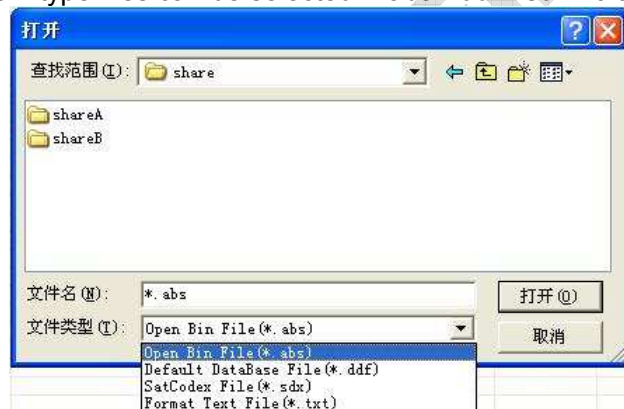
2 Operation

2.1 Open

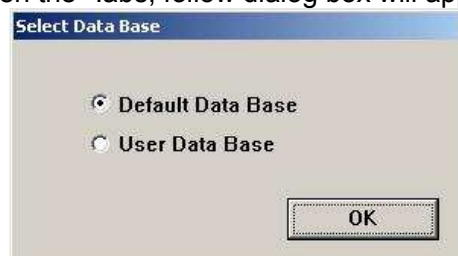
Select the Menu or Tool bar to click the Open item:



There are 4 type files can be selected: *.abs/*.ddf/*.sdx/*.txt

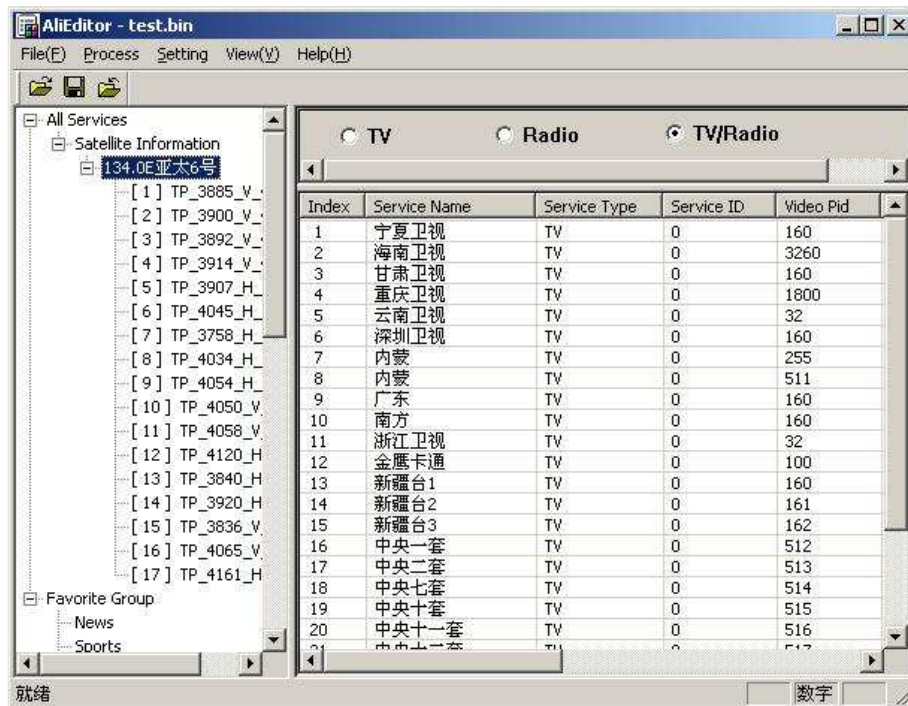


When open the *.abs, follow dialog box will appear:



User should select the Default Database or User Database to open.

2.2 Browse



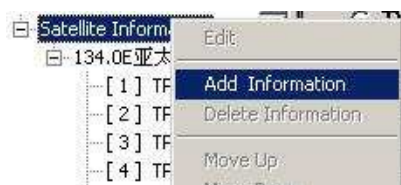
The “Left window” list the Satellite/TP tree/Favorite Group. When select one TP, the “Right window” will list the Programs for this TP.

The “Right top window” is the button to filter TV or Radio.

2.3 Edit

2.3.1 Satellite

➤ Add Satellite



➤ Edit Satellite

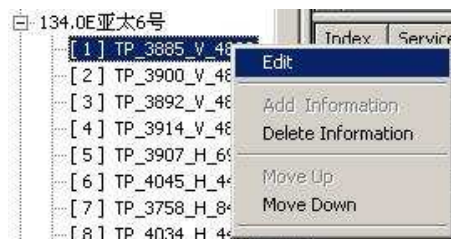


2.3.2 TP

➤ Add TP

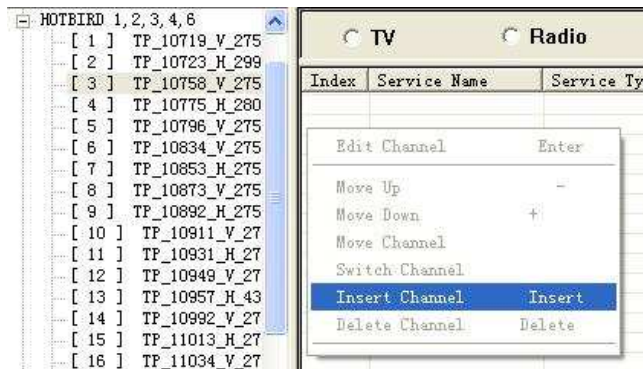


➤ Edit TP



2.3.3 Program

➤ Add Program

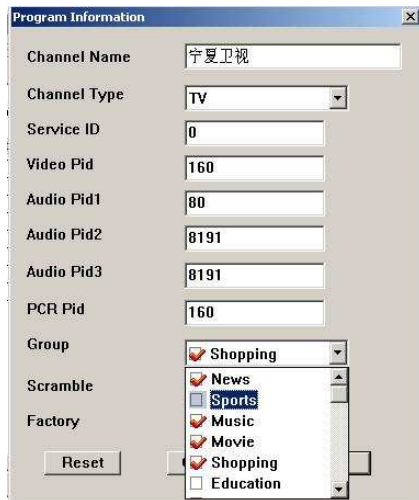


➤ Edit Program



Note: Should first select one TP, then user can Insert Channel.

When Insert Channel/Edit Channel, user can make one program to one or more Favorite Groups



2.3.4 Favorite Group

Select one Favorite Group, and then right click the program.



➤ Rename Group

Modify the Group Name.

➤ Remove Item

Remove the selected programs from this group.

➤ Edit Group

The all program are listed in the Favorite Group Edit Menu.

User can remove the Program from this Group or add one program to the Group.



2.4 Save



Only *.abs/*.ddf can be saved.

When save *.abs, user need to select saving to default database or user database.

2.5 Export

If want to save the *.txt/*.sdx to database, user should use the export function.

In fact, "Save" is the special case of "Export".

2.6 Download File

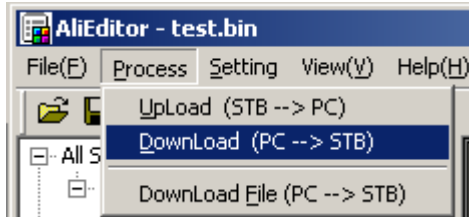


Select the *.abs file, then Download the Database to STB Flash.

Before Download, should select the aim Database which is "Default Database" or "User Database".



2.7 Download



This is the special case of "Download File". It just Download the current file to STB Flash. It can't support to select one file on PC to Download.

2.8 Upload

Upload the data from STB Flash to PC:



When click the "Upload (STB --> PC)", a window opened to user to select which file want to be saved. If the project is compiled with a new bootloader.abs (support above transfer protocol 2.1), the save type can be *.udf/*.ddf/*.abs, otherwise the save type can be only *.abs

