

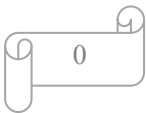
# HD PVR 800

=====

Solomend DVB-S2 High Definition  
Set Top Box

=====

## User Manual



## ***Safety Instructions***

This product has been manufactured to applicable the international safety standards. Please read all of safety and operating instructions before operating the product and keep this manual for future reference.

### **Main Power Supply**

AC 90-250V, 50/60Hz, Operate your product only from the type of power supply indicated on the marking label. If you are not sure of the type of power supplied to your home, consult your local power Company.

Disconnect the STB from the mains before you start any maintenance or installation.

### **Overloading**

Do not overload a wall outlet, extension cord or adapter as this may result in electric fire or shocks.

### **Liquids**

The product should not be exposed to any liquids such as dripping or splashing. No objects filled with liquids, such as vases, should be placed on the apparatus.

### **Cleaning**

Before cleaning, disconnect the product from the wall outlet. Use a cloth lightly dampened with water (no solvents) to clean the exterior.

### **Ventilation**

The slots on top of the product must be left uncovered to allow proper airflow to the unit. Do not stand the product on soft furnishings or carpets. Do not expose the product to direct sunlight, place it near a heater. Do not stack electronic equipment on top of the product.

### **Attahents**

Do not use any attachment that is recommended by the manufacturer, it may cause a hazard or damage the product.

### **Connection to the satellite dish LNB**

Disconnect the product from the mains before connecting or disconnecting the cable from the satellite dish. Failure to do so can damage the LNB.

### **Connection to the TV**

Disconnect the product from the mains before connecting or disconnecting the cable from the satellite dish. Failure to do so can damage the TV.

### **Location**

Place the product indoors in order not to expose to lightning, rain or sunlight .Do not install near any heat sources such as radiators, heat registers, stoves, or other apparatus (including amplifier) that product heat.

### **Lighting or not in use**

Unplug the produce from the wall outlet and disconnect the cable during a lighting storm or when unused for a long time.

### **Servicing**

Do not attempt service this product yourself, as opening or removing covers may expose you to dangerous voltage or other hazard. Refer all servicing to qualified service personnel.

**"The mains plug is used as the disconnect device. The disconnect device shall remain Readily operable."**

## Safety Precaution

### CAUTION:



The lightning flash with arrowhead **Warning:** The exclamation point within an symbol, within an equilateral triangle, To reduce the risk of electric shock, equilateral triangle is intended to is intended to alert the user to don't open the cabinet. Refer alert the user to important operating "dangerous voltage" and to prevent servicing to qualified personnel only.and maintenance (servicing). from a risk of electric shock.

### WARNING:

Do not use this STB where contact with or immersion in water is a possibility. Do not use near flower vase, washbowls, kitchen sinks, laundry tubs, swimming pools, etc.

**WARNING:** Do not put the candle or lamp stand on the cabinet; otherwise, there is the danger of fire.

**WARNING:** The unit should be connected to a power supply only of the type described in the operating instructions or as marked on the unit. If you are not sure of the type of power supply (for example, 120 or 230 V) to your home, consult your local dealer or local power company.

**WARNING:** This product installs diodes. Do not open the cabinet or touch any parts in the inner mechanism. Consult your local dealer for technical service if the opening is required.

**Note:** To ensure proper use of this product, please read this User manual carefully and retain for further reference.

**Note:** This product installs diodes. Do not open the cabinet to avoid the unit direct exposure to radiation.

**Unit Cleaning:** After the unit power is turned off, you can clean the cabinet, panel and remote control with a soft cloth lightly moistened with a mild detergent solution.

**Attachments:** Never add any attachments and/or equipment without the manufacturer consent; as such additions may result in the risk of fire, electric shock, or other personal injury.

**Locating:** Slots and openings in the cabinet are provided for ventilation to protect it from overheating. Do not block these openings or allow them to be blocked by placing the STB on a bed, sofa, or other similar surface, nor should it be placed over a radiator or heat register.

**Power-Cord Protection:** Place the power-supply cord out of the way, where it will not be walked on. Please take special attentions to cords at plugs, convenience receptacles, and the point where they exit from the unit.

**Object and Liquid Entry:** Never put objects of any kind into this STB through openings, as they may touch dangerous voltage points or short-out parts that could result in a fire or electric shock. Never spill any liquid on the STB.

**Note:** Moisture may be formed on the lens In the following conditions:

- when the unit is suddenly moved from a cold environment or an air-condition room to a warm place.
- Immediately after a heater has been turned on.
- In a steamy or very humid room.

If the moisture forms inside the unit, it may not operate properly. To correct this problem, turn on the power and wait about two hours for the moisture to evaporate.

**Parts Replacement:** When the unit parts need to be replaced, user should make sure the service technician use the replacement parts specified by the manufacturer or having the same characteristics as the original part. Unauthorized replacement may put the unit In the risk of fire, electric shock or other hazards.

**Safety Check:** After all the maintenances and repairs are done, user is required to request the service technician to conduct the overall safety check to ensure the machine is In the proper condition.

## Features

Accessories	Main board (DB-M3602-02V01), ALi 48 Keys IR controller, USB HDD BOX(customer option)
Board configuration	396MHz MIPS CPU, 128MB DDR400 RAM, Memory Clock 198Mhz, 2MB Serial Flash, Single Tuner, DVB-S2 demodulator,
Power Supply	Input 100V ~ 240V 50/60Hz
Power Consumption	30W Max / 1W Standby (it's optional by customer's board)
RS232	For FW Upgrading.
Receiver Standard	DVB-S2 Standard (ETSI EN 302 307)
Input Frequency Range	950MHz ~ 2150Mhz
Input Signal Level	-25dBm ~ -65dBm
Demodulation	QPSK, 8PSK, 16APSK
Transport Stream	MPEG-2 ISO/IEC 13818 Transport Stream Specification
MPEG Profile Level	MPEG2 SD, MPEG2 HD, H.264/AVC SD, H.264/AVC HD
LNB Power & Polarization	Vertical +13.5V, Horizontal 18V, Current: MAX 500ma,
Multi Satellite receiving	22K switcher, DiSeqC1.0, DiSeqC1.1, Unicable, DiSeqC1.2, USAL
Conditional Access system	1 Common Interface Slots ; 1 CA card reader Slots
A/V Output ports	YPrPb, RCA with CVBS, SCART with CVBS, HDMI(HDCP), Left/Right analog audio output(RCA), Digital audio output(SPDIF with coaxial or fiber)
Aspect Ratio	Auto, 16:9 Pillar box, 4:3 Pan & Scan, 4:3 Letter Box.
Audio Decoding	MPEG1 layer I, MPEG1 layer II, MPEG1 layer III, MPEG2, AC3.
Audio Mode	Stereo/MONO/Left/Right
DVR supporting	DVR with USB HDD, Time shifting with USB HDD
USB2.0 High Speed HOST	1 USB2.0 Port, USB media player to playback the media in USB flash disk or USB HDD or USB card reader with memory card or FW Upgrading.
File system	FAT12, FAT16, FAT32, NTFS (only support first partition)
Media Supporting	JPG, BMP, MP3, WMA
Ethernet Interface	10/100Mbit
Storage Temperature	0°C to +50°C
Operating temperature	5°C to +30°C

# ***CONTENTS***

## **1. REMOTE CONTROL**

## **2. BASIC OPERATIONS**

### **2.1 Turn on STB**

### **2.2 Power**

### **2.3 Channel UP/Channel down**

### **2.4 Volume UP/Volume Down**

### **2.5 Number**

### **2.6 Mute**

### **2.7 Pause**

### **2.8 Recall**

### **2.9 Favorite**

### **2.10 Audio**

### **2.11 Information**

### **2.12 EPG**

### **2.13 TV/RADIO**

### **2.14 Channel List**

### **2.15 Sleep**

### **2.16 Page UP/Page Down**

### **2.17 Multi Picture**

### **2.18 TEXT**

### **2.19 Subtitle**

### **2.20 Find**

### **2.21 Zoom**

### **2.22 TV/STB**

### **2.23 Menu**

### **2.24 Exit**

## **3. CHANNEL**

### **3.1 TV Channel List**

#### **3.1.1. Favorite**

#### **3.1.2. Lock**

#### **3.1.3. Skip**

#### **3.1.4. Move**

#### **3.1.5. Edit**

### **3.2 Radio Channel List**

### **3.3 Delete All**

## 4.INSTALLATION

### 4.1 Antenna Connection

### 4.2 Satellite List

### 4.3 Antenna Setup

### 4.4Single satellite search

### 4.5Multi satellite search

### 4.6 TP LIST

### 4.7 Other

## 5. SYSTEM SETUP

### 5.1 Language

### 5.2 TV System

### 5.3 Local time setting

### 5.4 Timer setting

### 5.5 Parental Lock

### 5.6 OSD setting

### 5.7 Favorite

## 6. Tool

### 6.1Information

### 6.2 Factory Setting

### 6.3Upgrade by RS232

## 6.4 COMMON INTERFACE

### 6.5 Upgrade By USB

### 6.6 Remove USB Device Safety

## 7. NETWORK LOCAL SETTING

### 7.1 NETWORK LOCAL SETTING

## 8. REC

### 8.1 MUSIC&PICTURE

### 8.2 RECORD MANAGER

#### 8.2.1 LOCK

#### 8.2.2 Delete

#### 8.2.3 Rename

### 8.3 HDD Information

### 8.4 HDD Format

### 8.5 Time shift

### 8.6 Jump

## Quick Start

**Connect your STB to TV by A/V Cable. You have 3 methods.**

**Methods 1:** If your TV is a standard definition TV and does not has components input port, please use a 3 lines cable (yellow, red and white) to connect your STB's CVBS, Left analog audio port, right analog audio port to your TV's corresponding port.



**Methods 2:** If your TV is a standard definition TV but has components input port or your TV is a High definition TV, you can connect your STB to your TV with a 5 lines cable (Green, Blue, Red/ Red, white).



**Methods 3:** If your TV has HDMI input port, you can connect your STB to your TV with a HDMI cable. resolution to be the max TV resolution.

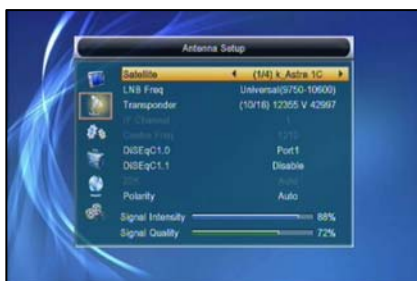


Connect your Satellite Antenna cable to your STB's LNB IN port. Then turn on your TV and select a exact Input port by TV remote controller.





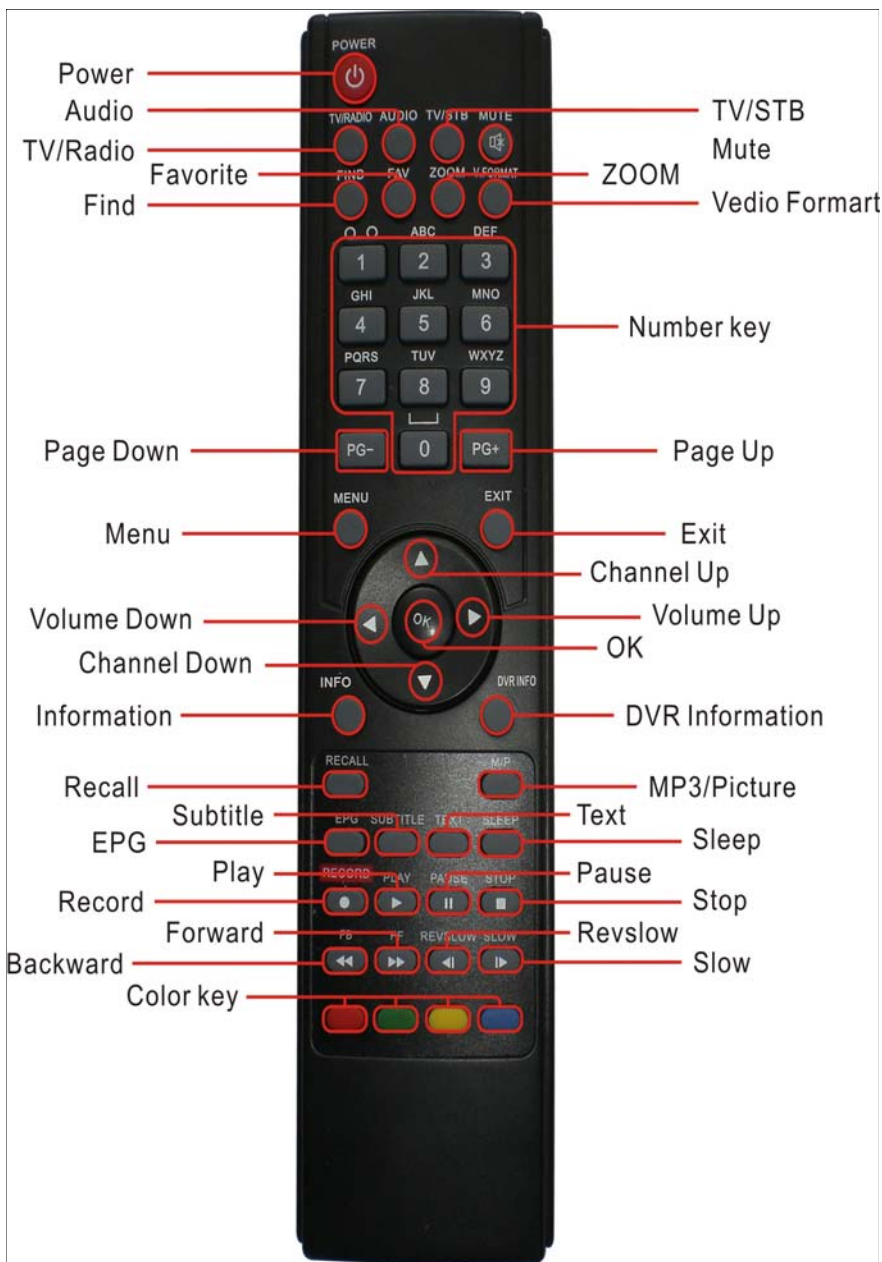
Turn on your STB power, select a satellite in satellite list menu and then enter the Antenna setup to config exact parameters of this antenna, select Single Satellite Search and select auto scan to search programs.



If you want to get high picture quality, please check how big resolution could your TV support, and press V.Format key to switch your STB output.



# 1. Remote Controller



## 2. Basic Operations

### 2.1 Turn on STB

First, press the [Device's Main Power] to turn on the Unit When the STB is first used, there will play the first channel from the default Channel List. If the STB is not first used, STB will play the same channel as last time before turning off.

### ? Frequently Asked Question

**Q: The power of my STB has been turned on and not in Standby mode, but the TV screen showed nothing:**

A: Make sure the TV set has been set to the correct video input (not the TV channels). For example, if you have connected the unit with the Video1 input of the TV set, the TV set has to be switched to Video1.

**Q: The power of my STB has been turn on and not in Standby mode, but the TV screen showed nothing except “one ball with No Signal image”.**

A: That means the channel, which you select, is no signal. It could be several causes:

1 The channel which you select is not in your allocate satellite. The simply solution is to change Channel.

2 The signal of current TV channel is too weak. You can try to change channel to other strong signal channels. If the problems still exist, please consult your local dealer or other professionals for technical service.

3 You use the Dual LNB, and you need Modify LNB Type

### 2.2 Power

1 Press [Power] Key can enter the Standby state

2 In Standby state, press [Power] Key again can call back the unit and go on play the previous channel.

3 User can also disconnect the device's main power to end the Standby state.

### 2.3 Channel Up/Channel Down

In full screen, press [CH+/CH-] to change channel.

### 2.4 Volume Up/Volume Down-

In full screen, press [VOL+/VOL-] to adjust volume.

### 2.5 Number

In full screen, use number key and press [OK] on the remote

### 2.6 Mute

1 Press [MUTE] key to mute the sound and the screen will show up mute OSD.

2 Press [MUTE] key again to restore sound.

## 2.7 Pause

1 In playing mode, press [Pause] key, the picture will be paused, but the sound of the channel will still continues.

2 Press [PAUSE] key again, the screen's picture will skip over to the current playing picture, and the sound of the channel will corresponding playing.

## 2.8 Recall

Press [RETURN] key will directly switch to the previous channel that you played before current channel.

## 2.9 Favorite

1 In full screen, press [FAV] key, it will display a window of "Favorite Group" on the left of the screen, which you can watch like below.



2 In the window of "Favorite", you can move highlight by press [Channel Up/Channel Down] key and press [OK] key to select favorite group.

3 In the window of "Fav group X", you can move highlight by press [Channel Up/Channel Down] key and press [OK] key to select favorite channels. Pressing [Page Up/Page Down] keys can implement the "Page up/Page down" function

4 You also can press [Volume Up/Volume Down] keys to select different "Favorite Group".

5 Press [Exit] key to exit the current window.

### ? Frequently Asked Question

**Q: Why the screen displays "No Favorite Channel", after pressing [Favorite] key?**

A: It is because that you haven't set any channels as "favorite channel". Please refer to Favorite



## 2.10 Audio

1 In full screen, press [AUDIO] key can open the "Audio" window on the screen.

2 You can modify the audio track by press [Channel Up / Channel Down] key and modify the audio mode by press [Volume Up / Volume Down] key.

3 Mode: Left/Right/Stereo/Mono

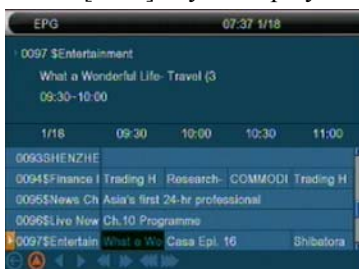
## 2.11 Information

In full screen, press [INFO] key can open information screen, in the window shows the parameters of current channel.

## 2.12 EPG

1 The STB has an Electronic Program

Guide (EPG) to help you navigate channels through all the possible viewing options. The EPG supplies information such as channel listings and starting and ending times for all available channels. Press [EPG] key to display EPG screen.



2 Press [OK] key in each item can see more detail information and press [Red] key to cancel



3 Press [Red] key in EPG menu can display “Time Bar” Menu. In “Time Bar” menu, you can press Left/Right] to select “back/current time/last program or -0:30/next program or +0:30/-2:00/+2:00/last day/next day” Press [Up/Down] key to channel change.

4 Press [Green] key in EPG menu can open timer menu. User can save a timer as he want.

5 In EPG menu, press [Exit] to close EPG screen





The search result display on the right screen. You can press [Red] key to delete the char, press [Blue] key to confirm, press [Green] key to cancel.  
2 Pressing [Exit] key can close “Find” window.

## **2.20 Zoom**

- 1 The [ZOOM] key allows you to magnify a certain area on the images
- 2 Press [ZOOM] key again, the image will enlarge rotate as x1, x2, x4, x6, x8, x12, x16.
- 3 In “x2 ~ x16” image, using [Up/ Down/ Up/ Down] keys to move the image center area you want to see.
- 4 In zoom mode, press [Exit] to close “Zoom” window.

## **2.21 TV/STB**

- 1 Press [TV/STB] key can switch between TV mode and STB mode

## **2.22 Menu**

- 1 Press [MENU] key can open the menu, exit the current menu to last menu or close the window.

## **2.23 Video Format**

- 1 Press [V.Format] key under Full Screen playback for 1st, it will show the current system outputting video resolution, continuously press this key, system will switch its outputting video resolution by sequence 576i -> 480i -> 576P -> 480P -> 720P\_50 -> 720P\_60 -> 1080i\_25 -> 1080i\_30.



## **2.24 Exit**

- 1 Press [EXIT] key can exit the current menu to last menu or close the win



### 3. Channel

When you press [Menu] key to enter menu, there will display the picture like below:

1 Press [Up/Down] key to select menu pages among Edit Channel, Installation, System Setup, Tools and Game.

2 Press [OK] or [Right] key to enter the “Edit Channel” If

Menu Lock is “On”, it will display an dialogue for user to key in password. The default Password is “0000”.

3 Press [Up/ Down] key to select menu items among TV Channel, Radio Channel and Delete All.

4 Press [Left] key or [Exit] key to go back to main Menu.



#### 3.1 TV Channel List

When you enter to “Channel List” menu, there will display the screen like below.

1 You can move highlight by press [Channel Up/Channel Down] key and press [OK] key to preview the current highlighted program in the right side preview window.

2 You can press [Page Up/Page

Down] key to implement the Page Up/Page Down function.

3 You can use [Volume Up/Volume Down] key to switch “Program Group”.

4 You can press [Menu] or [Exit] keys to go back to “Edit Channel” menu.

5 Press color key can implement the corresponding function in “Channel List”.



##### 3.1.1. Favorite

1 Pressing [FAV] key, then pressing [OK] key can open the “Favorite” window like above

2 You can move highlight between 8 favorite groups by pressing [Channel Up/Channel Down] key and press [OK] key to make a favorite mark in the left side of the selected Favorite group.

3 Pressing [OK] key on the marked Favorite group can cancel the exist favorite mark.





4 After marking, pressing [Exit] key can back to “TV Channel List”, there will show a favorite mark beside the marked channel.

### 3.1.2. Lock

1 Press [Red] key can enter lock mode.

2 Press [Up/Down] key to move the highlight and press [OK] key, it will display a dialogue to ask you to input password. The default password is “0000”. If you input the correct password you can see a “lock mark” in the right side of the highlighted channel.

3 After save and exit menu, STB will request you to input the password while you want to watch the locked channel.



### 3.1.3. Skip

1 Press [Green] key can enter skip mode.

2 Press [Up/Down] key to move the highlight and press [OK] to make a “skip mark” in the right side of the highlighted channel.

3 After save and exit menu, the channel will be skip while user change channel in the full screen.



### 3.1.4. Move

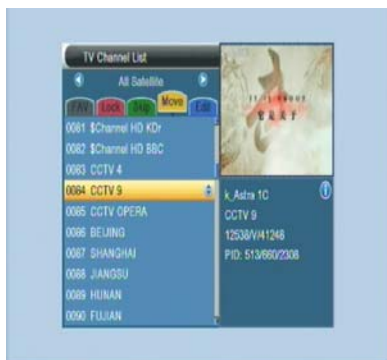
1 Press [Yellow] key, then press [Up/Down] key to move the highlight and press [OK] key to make a mark. There will show a “moving mark” in the right side of the selected channel like above

2 You can move the selected channel to the position that you want to place by press [Up/ Down] key. And press [OK] key to confirm your decision.

### 3.1.5. Edit

1 Press [Blue] key will open “Edit” menu.

2 Press [Exit] can exit “Edit Channel” menu. If you do modification in “Edit Channel” menu, the system will show up a message box to inquire you whether saving or not when exit.



### 3.1.5.1. Sort

1 Press [Red] key can open the “Sort” window like above. There are four kinds of sorting ways. You can press [Channel Up/Channel Down] key to move highlight and press [OK] key to confirm your selection.

2 The five kinds of sorting way are:

✧ Name (A-Z): Sorting in Alphabetical Order, ignore “\$” symbol.

✧ Name (Z-A): Sorting in Alphabetical Order, ignore “\$” symbol.

✧ FTA: Sort channel through free and scramble sequence. Free channel will in the front of channel list and scramble channel will at the rear of channel list

✧ Lock: Accumulated all locked channels and list in the last of TV Channel List.



### 3.1.5.2. Edit

In “Edit Channel” menu, press [Green], then press [Up/Down] key to move the highlight and press [OK] key to open the “Rename” window. It shows the window like below:



1 Press [Red] key can switch whether capital or not.

2 Press [Green] key can delete the char on the Cursor.

3 Press [Yellow] key can save the modification.

4 Press [Blue] key can cancel the operation.

### 3.1.5.3. Delete

Press [Blue] key, then press [Up/Down] key to move the highlight and press [OK] key to make a delete mark in the right side of the highlighted channel. After save and exit “Edit Channel” menu, the marked channel will be deleted.

## 3.2 Radio Channel List

Basically, the operation of “Radio Channel List” is same as “TV Channel List”, but there is one point different: In



“Radio Channel List” mode, there is no video information, so it will always display Radio’s logo in the right side preview window.

### 3.3 Delete All

1 Press [Ok] key, it will show up a warning message box to inquire you whether delete all or not.

2 If you select “Yes”, all channels will be deleted.

3 If you select “No” or press [Exit] key, you can exit the function directly without save.

#### ? Frequently Asked Question

**Q: IF I incautiously delete all channels, What should I do?**

A: there are two ways to restore:

★ To re-search all channels in

“Installation” function.

★ Use “Factory Setting” function to restore all channels in “Tools” function.



## 4. Installation

1 Press [Up/Down] key to select menu pages among Edit Channel, Installation, System Setup, Tools , network local setting and REC(multimedia)

2 Press [OK] or [Right] key to enter the "Installation". If Menu Lock is "On", it will display an dialogue for user to key in password. The default Password is "0000".

3 Press [Up/Down]key to select menu items .

4 Press [Left] key or[Exit] key to go back to main menu.



### 4.1 Antenna Connection

When you enter to "Antenna Connection" menu, there will display the screen like below:

Press [Left/Right] key to select LNB. Option: Fixed Antenna / Motor Antenna.

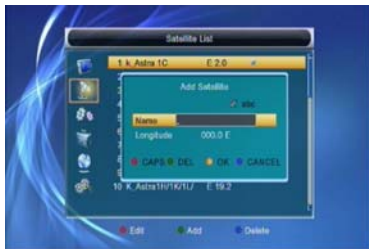
### 4.2 Satellite List

When you enter to "Satellite List" menu, there will display the screen like below:



1 Press [Red] key, you can enter edit satellite menu. You can edit Satellite name and satellite Longitude.

2 Press [Green] key, you can enter add satellite menu.

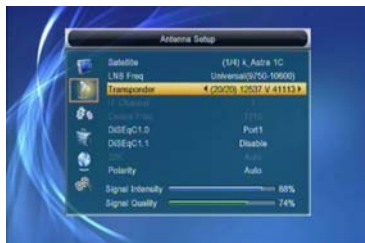




3 Press [Yellow] key, you will be asked “Are you sure to delete?”. Select “Yes” to delete the satellite that highlight focus on. Select “No” to cancel the operation.

### 4.3 Antenna Setup Fixed Antenna

If you select “Fixed Antenna” in “Antenna Connection” menu, there will display the screen like below:



In Antenna Setup mode:

1 Satellite: In this item, press [Volume Up/ Volume Down] key can switch Satellites and press [OK] key can enter satellite list for you to select directly.

2 LNB Freq: In this item, press [Volume Up/ Volume Down] key can select the parameter. Option is 5150/5750/5950/9750/10000/10050/10450/10600/10700/10750/11250/11300/5150-5750/5750-5150/Universal(9750-10600)/Unicable(9750-10600)/Unicable10200

3 DiSEqC1.0: You can use [Volume Up/ Volume Down] key to switch options. There are several options for your selection: Disable/LNB1/LNB2/LNB3/LNB4.

4 DiSEqC1.1: you can use [Volume Up/ Volume Down] key to switch options.

There are several options for your selection:

Disable/LNB1/LNB2/LNB3/LNB4...LNB16.

5 22k: You can use [Volume Up/ Volume Down] key to switch “on/off”. When this item is switched to “ON”, receiver will receiver TV and radio input signal from “22K” port. If the item is switch to “Off”, the receiver will receiver all signal from OK port.

! Notice

When you choose LNB type “Universal”, you can not modify 22K.

6 Toneburst: In “Toneburst” item, you can press [Volume Up/ Volume Down] key to switch “Off/On” functions.

7 Polarity: In “Polarity” item, [Volume Up/ Volume Down] key to switch “Auto / H / V” functions.

### Motor Antenna

If you select “Motor Antenna” in “Antenna Connection” menu, there will display the screen like below:



## 1 LNB Type:

5150/5750/5950/9750/10000/10050/10450/10600/10700/10750/11250/11300/5150-5750/5750-5150/ Universal(9750-10600)/Unicable(9750-10600)/Unicable10200

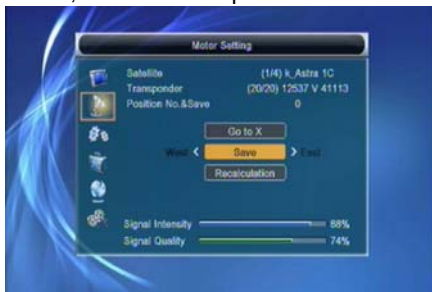
## 2 Motor Type: DiSEqC1.2/USALS

3 Local Longitude/Local Latitude: If you select "USALS", "Local Longitude / Local Latitude" is available. Press [OK] and number key to input.

4 Delete All: This operation will delete all satellite positions. It will display a dialogue "Are you sure...". If you select "Yes", it will clear all position. Select "No" to cancel the operation. This item is only valid in "DiSEqC1.2" Mode.

## 5 Motor Setting:

If you select "DiSEqC1.2", "Local Longitude / Local Latitude" is not available. It will show the screen like below:



- ☆ Press [Left/Right] key or [OK] key to change satellite or transponder.
- ☆ Position No.&Save: You can press [Left/Right] key or number key to select or input Position NO.
- ☆ Go to X: Press [OK] key to open a list. You can go to X or go to reference.
- ☆ After select "Satellite" and "Position No.&Save", you can move the highlight to "West/Save/E ast" line and press [Left/Right] to move the dish and press [OK] to save the position. Move the highlight to "Recalculation" and press [OK] key to recalculate. Set the satellite's longitude and local longitude / local latitude, USALS can move dish automatically.
- ☆ Move the highlight to "Motor Setting" and press [OK] key to recalculate.

Set the satellite's longitude and local longitude / local latitude, USALS can move dish automatically. Move the highlight to "Motor Setting" and press [OK] key, it will show the screen like below:



Switching the satellite can move the dish to the right place. 6 Limit Setup:

1 When you set "limit setup" to "West Limit/ East Limit", you can move the highlight to "Limit Setup" line and move the dish to west or east by pressing [Left/Right] key manually.

2 When you are moving to the target place, press [OK] key to save the point.



## 4.4 Single Satellite Search

When you enter to "Single Search" menu, there will display the screen like below:

1 In "Satellite" item, press [Volume Up/ Volume Down] key to select satellite, which you to scan. Otherwise, press [OK] key can open the "satellite list" for you to select directly.

2 In "FTA Only" item, press [Volume Up/ Volume Down] key to select scans all channels or just scans free channels. If you select "Yes", it will scan free channels only.

3 In "Scan Channel" item, press [Volume Up/ Volume Down] key to select scans TV + Radio Channels, or just TV channels or just Radio channels.

4 In Network Search, press [Volume Up/ Volume Down] key to select whether network search or not.

### ! Notice

You can only do network search when you select "Preset Scan".

5 In "Scan Mode" item, you can select "Auto Scan" to blind scan or select "Preset Scan" to scan all preset TPs.

6 Moving the highlight to "Search" item and press [OK] key to start scanning. Next screen will display the process and show the current scanning channel.

7 In the "Single Search" menu, press [Exit] key to draw back from the scanning and meanwhile saving the current value.

## 4.5 Multi Satellite Search

When you enter to "Multi Search" menu, there will display the screen like below:





1 In "Satellite" item, press [Enter] key to see the selected satellite. The system will use DiSEqC1.0/ DiSEqC1.2 / USALS function to search satellite and scan channels. It will scan all the satellite displaying in the bottom box.

2 In "FTA Only" item, press [Volume Up/ Volume Down] key to select scans all channels or just scans free channels. If you select "Yes", it will scan free channels only.

3 In "Scan Channel" item, press [Volume Up/Volume Down] key to select scans TV + RadioChannels, or just TV channels or just Radio channels.

8 In Network Search, press [Volume Up/ Volume Down] key to select whether network search or not.

4 In "Scan Mode" item, you can select "Auto Scan" to blind scan or select "Preset Scan" to scan all preset TP's.

5 Moving the highlight to "Search" item and press [OK] key to start scanning. Next screen will display the process and show the current scanning channel.

6 In the "Multi Search" menu, press [Exit] key to draw back from the scanning and meanwhile

saving the current value.

## 4.6 TP List

When you enter to "TP List" menu, there will display the screen like below:

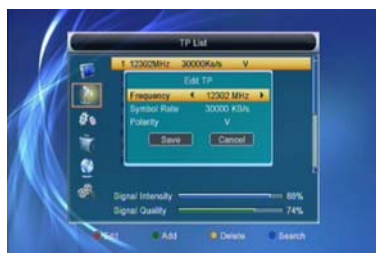


1 Press [Volume Up/Volume Down] key, you can switch satellite.

2 Press [Red] key, open edit TP menu.

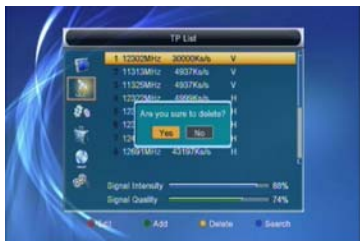
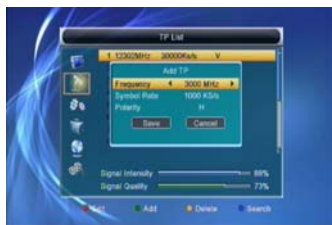
User can edit TP info.

Frequency: "3000~13450 MHz", Symbol Rate: "1000~45000Ks/s".





3 Press [Green] key, open new TP menu. User can add a new TP.



4 Press [Yellow] key will open dialog box asking you whether confirm to delete current TP. When select “Yes”, you will delete the channel which highlight focus on. When select “No”, it will cancel the operation.

5 Press [Blue] key will display a dialogue box. You can select “FTA Only, Scan Channel, Network Search” items, then move highlight to “Yes” button and press [OK] to begin to search.

## 4.7 Other

1 In “LNB Power”, there are two options, “On” and “Off”, for your selection. If the setting is “On”, the receiver will supply power to satellite antenna. If the setting is “Off”, the receiver won’t supply power to satellite antenna.

2 In “Channel Play type”, you can set the channel play type. You can select the “Playing channels” as “Free”, “Scrambled” or “All”.

For Example: If you select “Free”, in full screen play ,all scrambled channels skipped when you change channels by use 【Channel up/Channel Down】 key.



3 Press 【Exit】 to draw back from “other” menu.

## 5 System Setup

When you enter to “System Setup” menu, you will see the Screen like below.

1 Press [Up/Down] key to select menu pages among Edit Channel, Installation, System Setup, Tools ,Ethernet and Multimedia.

2 Press [OK] or [Right] key to enter the “System Setup”. If Menu Lock is “on”, it will display an dialogue for user to key in password. The default Password is “0000”.



3 Press [Up/Down] key to select menu items among TV channel, Radio Channel and Delete All.

4. Press [Left] key or [Exit] key to go back to main menu.

## 5 Language

When you enter to "Language" menu, you will see the screen like below.

1 Language: press [Volume Up/ Volume Down] key to select menu languages, the selections of languages include: English, French, German, Russian, Arabic, Portuguese, Turkish, Spanish, Polish and Italian.



2 First Audio: Some channels have more than one audio language for choosing; by this function you can set the first audio for this channel. If the playing channel has the same audio as the "First Audio" you set, system will play this audio language as default. If the channel hasn't the suited audio language, then the system will compare automatically with second audio language. The selections of audio languages include: English, French, German, Russian, Arabic, Portuguese, Turkish, Spanish, Polish and Italian.

3 Second Audio: If the channel has no correspond audio with "First Audio" but have corresponded audio with "Second Audio", system will play the second audio language as default. If no audio language corresponds with the "Second Audio", then the default language of current channel will be played automatically. The selections of audio languages include: English, French, German, Russian, Arabic, Portuguese, Turkish, Spanish, Polish and Italian.

4 Teletext: You can set teletext language. If the streams have this language you can see the teletext in language you set.

5 Press [Exit] key to draw back from "Language" menu.

## 5.2 TV System

When you enter to "TV System" menu, you will see the screen like below:



1 Video Resolution is for switching the system outputting video resolution. Move highlight on it and press left or right key, it will switch video resolution circularly by the sequence By Source <-> By Native <-> 480i <-> 480P <-> 576i <-> 576P <-> 720P\_50 <-> 720P\_60 <-> 1080i\_25 <-> 1080i\_30. This effect is equal to press V.Format Key under Full Screen and their last setting saving will be efficient for each others. By Source means system will set the video output resolution according to the program t's playing, different resolution programs switching perhaps will makes TV screen flickering. By Native TV means system will be according to the HDMI TV's max supported resolution to set its resolution, if system is not connected to a HMDI TV, it will set resolution to be default.

2 Aspect Mode is for switching the screen aspect ratio mode. Now we provide below options: 4:3 PS / 4:3 LB / 16:9/Auto. You can press [Left/Right] key to select each mode circularly. 16:9 will provide user pillar box mode it means user use 16:9 TV to display but need to see a 4:3 full display picture. System will force press wide screen picture to be narrow and there're black band on left and right site.

Auto means system won't do any aspect ratio translation, 16:9 picture source will be good display on a 16:9 TV but will be too narrow on a 4:3 TV, and 4:3 picture source will be too wide in a 16:9 TV but will be good display in a 4:3 TV.

3 RF system and RF channel are for user to set the TV RF modulator output signal VHF/UHF channel and TV system mode. If your TV is too old to support CVBS/YPbPr/HDMI, you can use TV RF cable to connect STB's TV RF output port to TV Antenna input port.

4 HDMI Video Out is for setting the HDMI video output mode. It has option: RGB-Normal, RGB-Expand, YCbCr4:4:4 and YCbYr4:2:2. You can press [Left/Right] Key to select each mode circularly.

5 Digital Audio Out is for setting the both SPDIF and HDMI's digital audio output mode, it has options LPCM Out, BS Out and Auto. You can press [Left/Right] Key to select each mode circularly. LPCM Out means system will decode no matter AC3 or PCM audio track data to be LPCM, digital audio decode or HDMI TV will get LPCM digital audio data. BS out means system won't to AC3 decode just output AC3 RAW data to SPDIF and HDMI. Auto means system will detect which the connected HDMI TV can decode and then output that data. If HDMI TV can decode AC3, system just output RAW data, if HDMI TV can decode LPCM only, system will just decode AC3 or LPCM to be LPCM and then output.

6 Press [Exit] key to draw back from "TV system" menu.

### 5.3 Local Time Setting

1 GMT Usage: This item is used for open the usage of GMT. You can press [Volume Up / Volume Down] keys to switch "On/Off".

2 The "GMT Offset" item is valid only when the setting of "GMT Usage" is "On". You can press [Volume Up / Volume Down] keys to switch "GMT Offset" value, and the range is "-12:00 ~ +12:00", increase each half hour progressively.

3 Summer Time: This item is only valid when the setting of "GMT Usage" is "On". When "Summer Time" is "On", it will add one hour to the time.

4 "Date" and "Time" items are valid only when the setting of "GMT Usage" is "Off". You can press [Volume Up / Volume Down] keys to moving highlight and use number keys to input directly. *i. If the current channel provides the correct time information, you will see the current time while you enter "Time" menu. If the channel doesn't provide time information, you have to input the date and time information manually.*

5 Press [Exit] key to draw back from "Time" menu.



### 5.4 Timer Setting

Select "Timer Setting" item and press [OK] key to enter "Timer list" menu.

1 Current time information will display on the first column; if the current time is incorrect, please



modify the time information in “Time” item.

2 Timer Mode: There are several modes for Timer to setting, include Off, Once, Daily

3 Wakeup Channel: press [OK] key to enter channel list and select channel that you want to setting.

4 Wakeup Date: use number keys to input your wakeup date.

5 On Time: use number keys to input your wakeup Once the time's up, no matter what the time. system is in standby mode or in playing mode, the system will automatically switch to the channel you want and start to play.

6 Duration: After you set a time for “Duration” item, once the time's up, the system will automatically switch to standby mode. If you want not work this function, set the duration is 00:00.

7 Move the highlight to “Save” button and press [OK] key to save timer. Select “Cancel” or press [Exit] key to cancel the operation.

## 5.5 Parental Lock

1 In “Parental Lock” line , press [OK] key, there will pop an dialogue for you to input the password. Default password is “0000”. When you input the correct password, you will see a screen like below:



2 Menu Lock determining that when users wish to enter “Edit Channel/Installation/Tools” menu, whether have to input Password or not. If the have to key in password, set “No” means unlock.

3 Channel Lock determining that when users wish to play the lock channels, whether have to input the password or not. If the setting is “Yes”, play the channels with lock mark will show up a dialogue on the screen and ask for the password. If the setting of “Channel Lock” is “No”, the Lock function will invalid.

4 New Password is used for revising password; you can input the new password in this item by using number keys directly. After you filled in 4 digital numbers, the highlight will auto skip to Confirm Password and ask you to input the new password again. If the password is correct, the screen will show up a message of “Saving Data, Please wait...” After finish saving and draw back to “System Setup” menu, the revising is complete.

5 Press [Exit] key to draw back from the “Parental Lock” menu.

## 5.6 OSD Setting

When you input to “OSD Setting” menu, you will see a screen like below:

1 OSD Timeout: When you switch channels in full screen, there will show up some information about current channel on the lower of the screen.

And regarding to the duration of these information show up on the screen, you can press [Volume Up/Volume



Down] key to set the time. The range of the duration is “1 second ~ 10 seconds”.

2 OSD Transparency: You can press [Volume Up/Volume Down] key to select the values. There are 5 levels of transparency, 10%, 20%, 30%, and 40% and “NO” (means no transparency function).

3 Press [Exit] key to draw back from the “OSD Setting” menu.

## 5.7 Favorite

When you input to “Favorite” menu, you will see a screen like below:

When press [OK] key, you can rename the favorite group's name. It will display the dialogue like below:



1 Press [Red] key can switch whether capital or not.

2 Press [Green] key can delete the char on the or cursor.

3 Press [Yellow] key can save the modification.

4 Press [Blue] key can cancel the operation.

## 6. Tools

When you enter “Tools” menu, you will see a screen like below:

In tool “menu”:

1 Press [Up/Volume Down] key to select menu pages among Edit Channel, Installation, System Setup, Tools and Game.

2 Press [OK] or [Right] key to enter the “Tools”. If Menu Lock is “On”, it will display a dialogue for user to key in password. The default Password is “0000”.

3 Press [Up/Down] key to select menu items.

4 Press [Left] key or [Exit] key to go back to main menu.



### 6.1 Information

1 When you enter to “Information” menu, you will see a screen like above. The screen displays the items as “MAC, MACHINE, NC, VERSION” information.

2 Press [Exit] key to draw back from “Tools” menu.



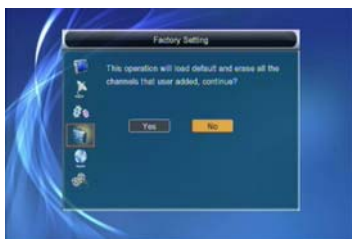
### 6.2 Factory Setting

When you press [ok] key in the “Factory Setting” item:

1 It will show a warning message to inquiry you “The operation will load default and erase all the channels that user added, continue?”.

2 If you select “Yes” option, the revised parameters of the receiver will reset to default value. Please carefully to using this function.

3 In step 1 and step 2 , select “No” or press [Exit] key can draw back from this item and without saving.



## 6.3 Upgarde By RS232

1 We offer the functions for users to connect one receiver(Master) to the other receivers (Slave) via serial interface.

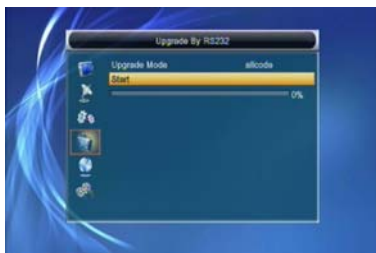
2 Connect master receiver to slave receiver via serial interface. Enter “Upgrade By RS232” menu receiver and press [Volume

Up/Volume in master Down] keys to switch upgrade mode. Upgrade modes include: all code / main code /radio back / default db / user db

3 Turn on slave receiver and it needn't operate any setting.

4 Move highlight to “Start” on master reciver and press [OK] key to start upgrade.

5 Press [Exit] key to save the parameters and draw Back.



## 6.4 Common Interface

1 Press OK Key when highlight on “Common Interface” will enter the CAM card information Menu select like below:

2 Press [Up/Down] Key to select slot 1

Press OK key again to enter this card information menu like below:



3 In the CAM card information menu, you can select each item by pressing [Up/Down] Key and press OK to enter. This information menu format and string is according to CI card itself. So, different card may be has deferent menu of it.

4 Enter Change CA PIN can change the pin code of the CA card in this CAM card.

## 6.5 Upgrade by USB



Open Upgrade By USB menu according to Menu -> Tools-> Upgrade By USB. Upgrade Mode has only 1 option: All Code, it means that you can only upgrade whole file to your STB's flash. Please rename your new fw file name to be the format "all\*.abs", \* means any others string is acceptable, but the initial 3 letters must be "all" and the extension name must be ".abs". Then Press OK key to start upgrade by USB.



## 6.6 Remove USB device safely

STB plugged USB HDD disk, when you need remove your USB, Open Remove USB device safely menu according to Menu -> Tools-> Remove USB device safely.

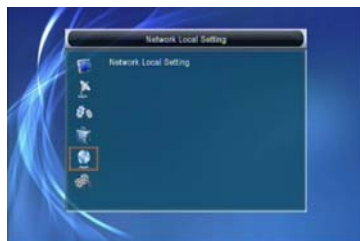


Press OK key ,then press " yes" ,your USB is been Safe remove



## 7.Network Local Setting

1 Press OK Key enter " network local setting" if you are using a DHCP server in your LAN, configure the DHCP server so it doesn't assign the IP address used by the STB, Otherwise an IP address colision is possible. Refer to the DHCP Server's Manual about how to configure a DHCP address pool.



## 8. REC

When you enter to “REC” menu, you will see the screen like below:

1 Press [Up/Down] key to select menu pages among Edit Channel, Installation, System Setup, Game and REC.

2 Press [OK] or [Right] key to enter the "REC". If Menu Lock is "On", it will display a dialogue for user to key in password. The default Password is "0000" .

3 Press [Up/Down] key and [Ok] key to select menu items.

5. Press [Left] key or [Exit] key to go back to main menu.



## 8.1 Music & Picture

1 Press Ok key enter: “Music & Picture” menu ,please see the blow picture.

you can preview the picture at the top right corner if the scroll bar is on the picture files(JPG,BMP), and show the logo when at MP3 file.



Move scroll bar when press up/down key,  
page up or down by page key.


Go into sub-directory when press ok key in the file directory, play the selected file when scroll bar is on the file, automatic return Music & Picture menu after play is over.

**Color key operation:**



Yellow key

Show one operation windows . “please select play list type” by yellow key, you can select Music or Image play by Left/Right Arrow key, open the selected Play list if press ok key. There will display “This type of play list does not exit” if there are no any file.

Blue key:

Press one time Blue key will show  It is shuffle ;

Press the key again will show 01 it is repeat one ;

Press the key the third times will show   It is repeat all.

Info key:

Press INFO key will show Setup Menu, Please see the below setup menu:



Size(Screen)select:

Real: show the real size if the image size less than full screen size, but only partial image, the image is shown from left Top corner, don't show for over part.

Full: Full screen display and show real size if the image is less than screen:

Menu operation:

(1) Setup option

Press up/down key to move scroll bar, and switch option by left/right key, all option please see the below table

Item	Option	Default
Size	Full/Real	Full
Time	0~10Sec	2
Repeat	Off/On	off

(2) Save/Exit

Move scroll bar to Save icon, press OK for file save, select Cancel and press Ok, Cancel without save.

FIND key

Press FIND key will find sort files.

0 key

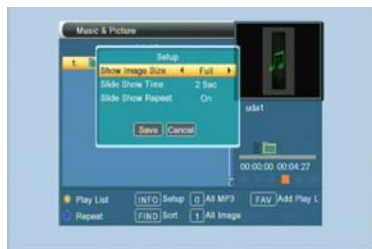
Press o key will all the MP3 files in current directory are added into image play list.

1 key

Press 1 key will All the image files in current directory are added into image play list

FAV key

Put the file selected by scroll bar to play list when press FAV Key, in the meanwhile show "Add to Play List", display disappear after about one seconds, the file will be added into MP3 play list if it is one MP3 file, to Image play file for one Image file.



## 8.2 Record manager



## 8.2.1 Lock

- 1 Press [Green] key to lock a program on HDD.
- 2.If you want to cancel the lock mark for a program, press[Green] key again. It will ask you input password. Once you input the correct password, it will cancel the lock feature for the program.

## 8.2.2 Delete

- 1 Press [Blue] key to make a delete mark on the highlight program.
- 2 If you want to cancel the delete mark.
- 3 when exit the “Record Manager” menu, all the delete mark channel will be deleted directly.

## 8.2.3 Rename

- 1 Press [Red] key to rename the highlight program. It will show the “Rename” window.
- 2 You can press [Red] key to switch capital and lowercase.
- 3 Press [Blue] key to delete the char on the cursor.
- 4 Press [Yellow] key to save the modification
- 5 Press [Blue] key to cancel the modification



## 8.3 HDD Information

- 1 Move the highlight to “HDD Information” and press [OK] key. It will display “HDD information” as below:



## 8.4 HDD Format

- 1 Move the highlight to “HDD Format” and press [ok] key. It will display “HDD Format” as below.
- 2.when you press [ok] key again, it will ask you whether you are sue to format the disk. Select “Yes” to format or select “No” to cancel.



## 8.5 HDD Format

- 1 Move the highlight to “Timeshift” and press[OK] key . It will display “Timeshift” as below.



2 press [Left/Right] to switch timeshift “on/off”.

3 If set timeshift “on”, it will timeshift the program when user watch TV.

4 Press [Info] key to see timeshift OSD as below.



5 You can press [Left/Right] to move the slide to left or right. But can not exceed the current time. Press [OK] key to play the point where the slide is.

6 You also can press [Pause] / [fast back]/[slow/back] can realize these function. Then it will enter the mode which is playing the recorded program on HDD. (like the picture below) Then you can do pause, fast forward, fast back, slow forward, slow back.

**Notes: Time Shifting will only be available when USB HDD is connected to system and read/write speed is high enough to do that.**

7 Press [Stop] key first time to end the playing mode. Press [Stop] key second time to stop the recording.

## 8.5 Jump

1 Move the highlighted to “Jump” and press [OK] key. It will display “Jump” as below.

2 Press [Left/Right] to switch the jump time. The option is 30 second, 1 min, 5min, 10min, 30min.

3 when you play the record program, press [PREV/NEXT] key can jump to previous and next program to see it.

