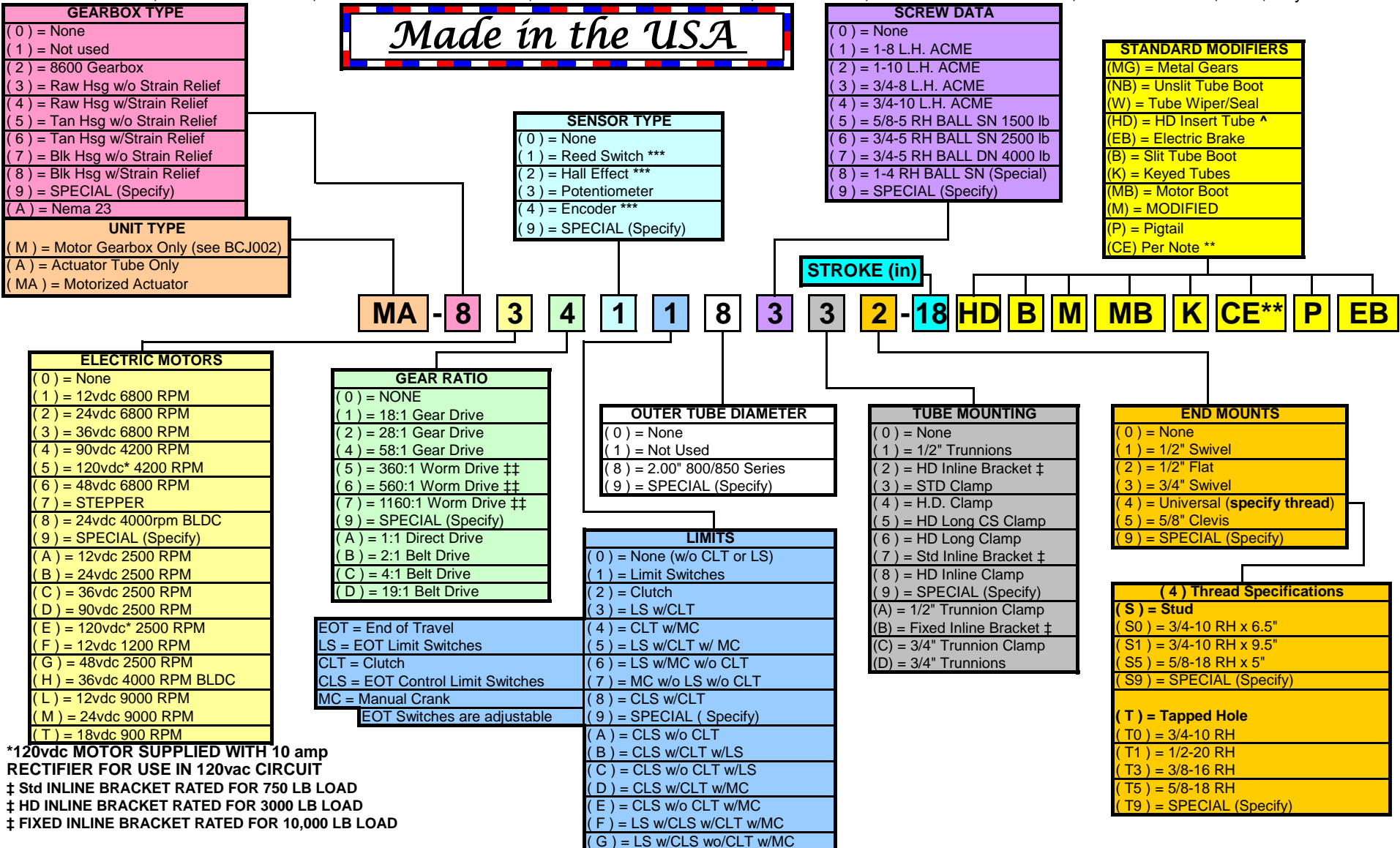


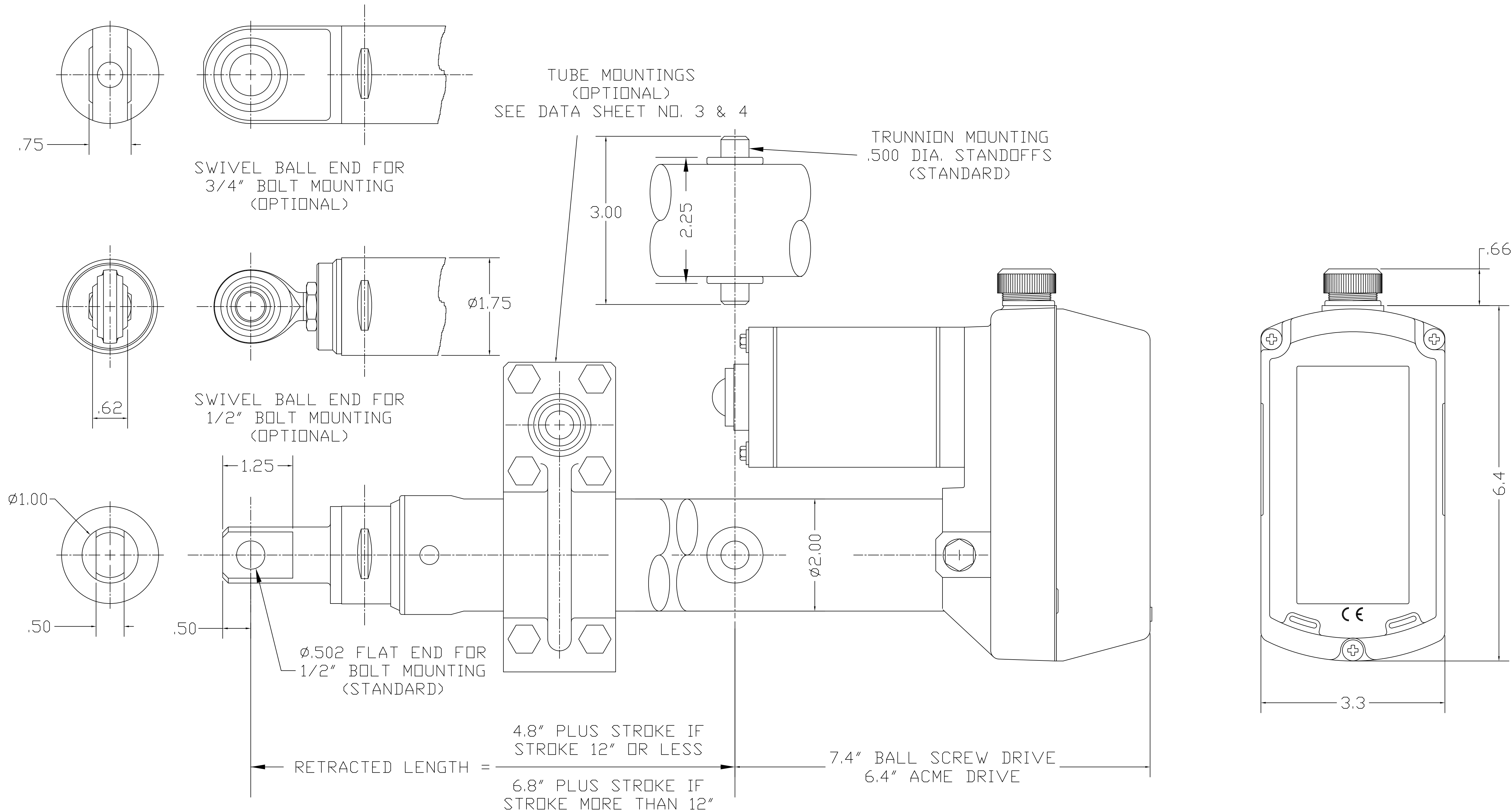
800/850 Series Commercial Actuator

LITERAL/NUMERIC PART No. CODE SYSTEM

EXAMPLE: ITEM NO. MA-834118332-18.00BK = MOTORIZED ACTUATOR WITH A BLACK GEARBOX, 36VDC 6800 RPM MOTOR, 58:1 RATIO, REED SWITCH, LIMIT SWITCHES, 800 SERIES 2" DIA. O.T., 3/4-8 L.H. ACME SCREW, STD CLAMP, 1/2" FLAT END MOUNT, 18.00" STROKE, Boot, Keyed



NOTE: STD U.O.S.
ACME SCREWS (A) ARE LEFT HAND (L.H.) PITCH
BALL SCREWS (B) ARE RIGHT HAND (R.H.) PITCH



CUSTOM STROKES AVAILABLE UPON REQUEST

	PERFORMANCE DATA (BALL SCREW)						PERFORMANCE DATA (ACME)					
GBX RATIO	RATED LOAD lbs.	AMPERAGE DRAW @ RATED LOAD					RATED LOAD lbs.	AMPERAGE DRAW @ RATED LOAD				
		12 vdc	24 vdc	36 vdc	90 vdc	120 vac		12 vdc	24 vdc	36 vdc	90 vdc	120 vac
18:1	750	20	12	8	1.8	1.6	500	17	10	7.5	1.7	1.11
INCHES/SEC.		.9	.9	1.1	.7	.6	IPS	.6	.6	.7	.4	.4
28:1	1500	24	16	10	4	2	750	17	10	7.5	1.8	1.0
INCHES/SEC.		.6	.6	.8	.5	.4	IPS	.35	.35	.4	.25	.25
58:1	1500	12	8	5	1.6	.9	750	9	6	4.5	1.2	.8
INCHES/SEC.		.3	.3	.4	.25	.23	IPS	.2	.2	.25	.15	.15

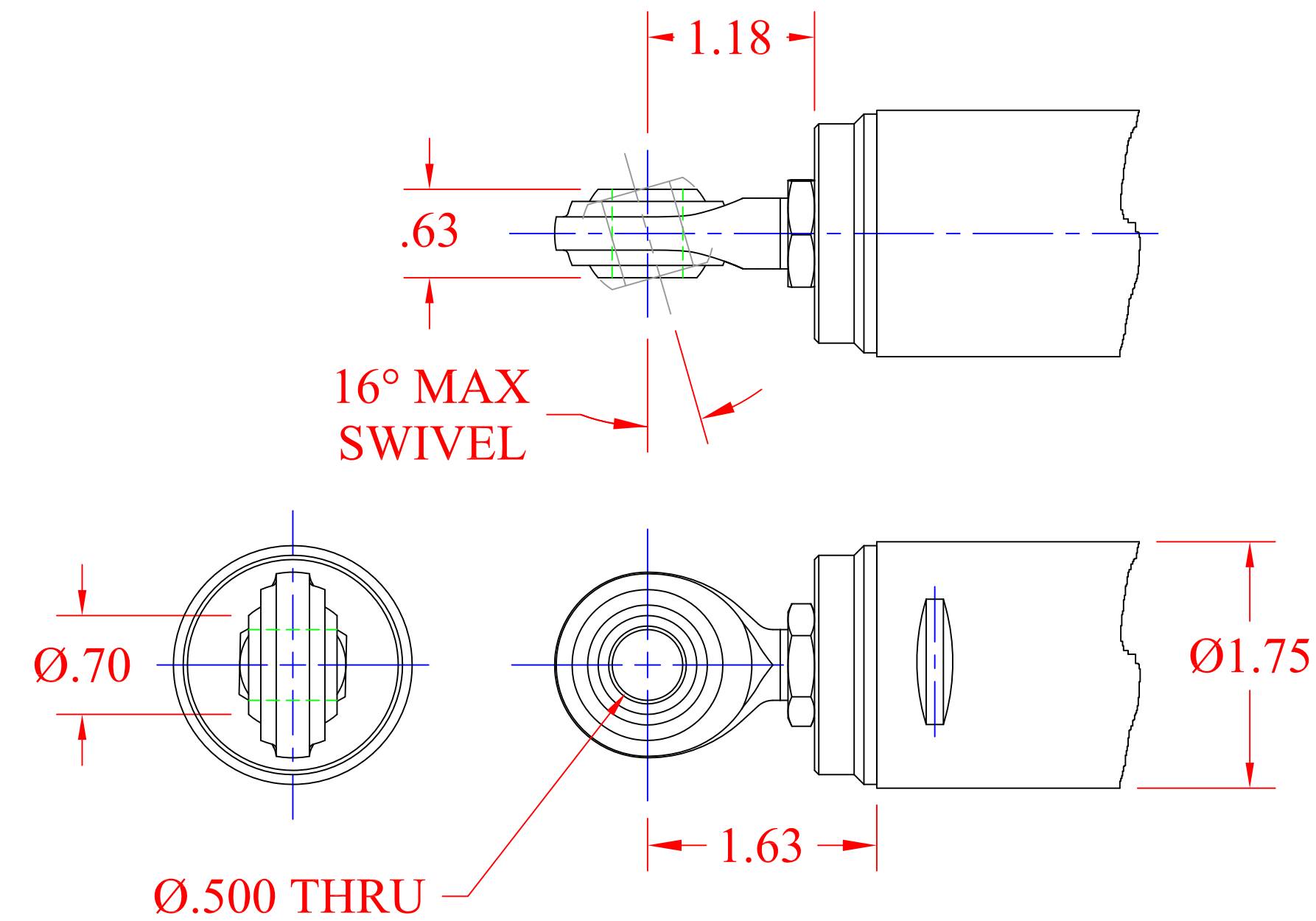
ACTUATOR PERFORMANCE AND SELECTION DATA

SEE BCJ001 FOR PART NO.

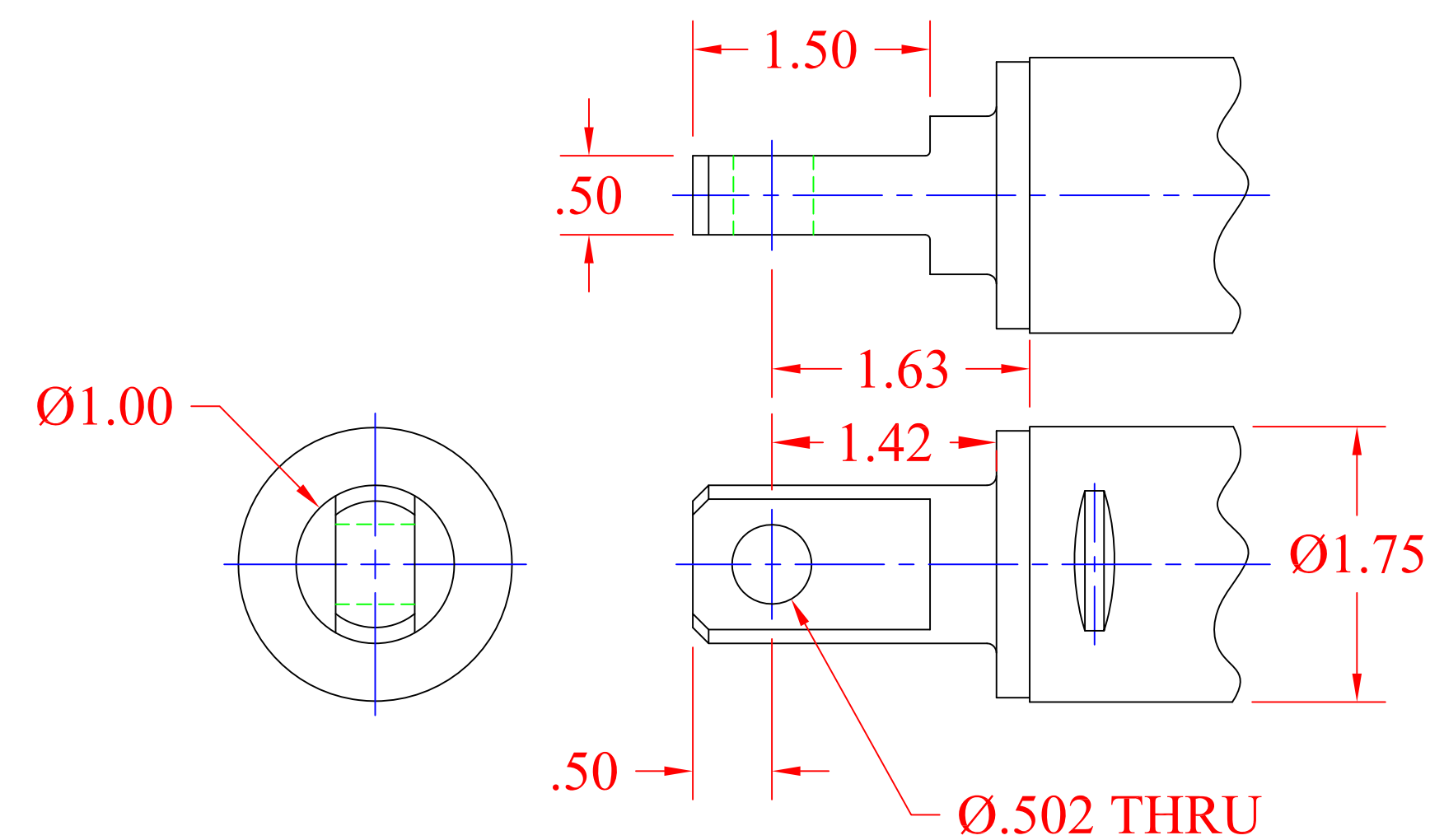
SHEET NO. 1 OF 5

VENTURE MFG. CO.

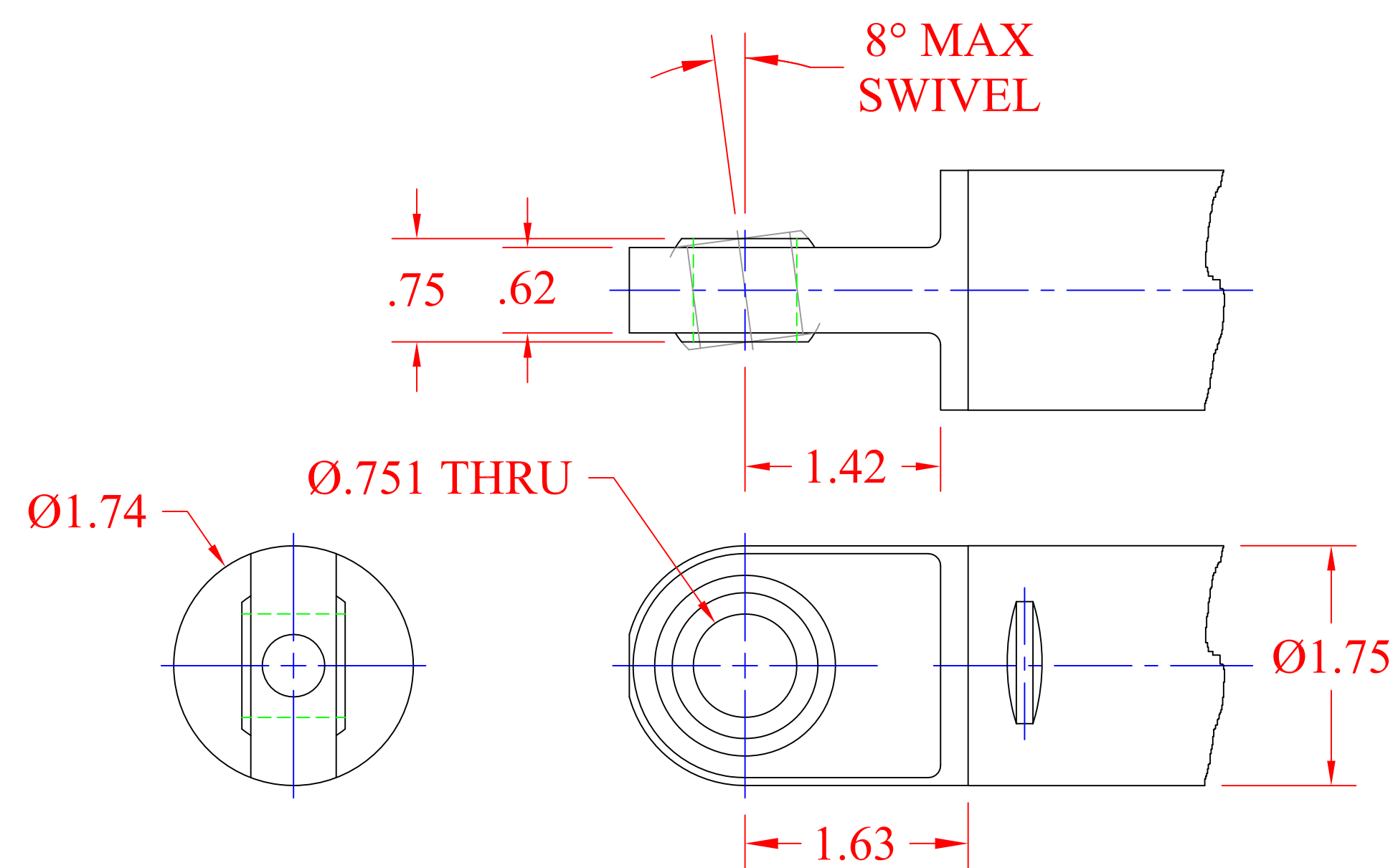
3636 DAYTON PARK DRIVE
DAYTON OHIO 45414
TEL.: (937)233-6832
FAX: (937)233-8485
WEB PAGE: www.venturemfgco.com



#1
1/2" SWIVEL END MOUNT



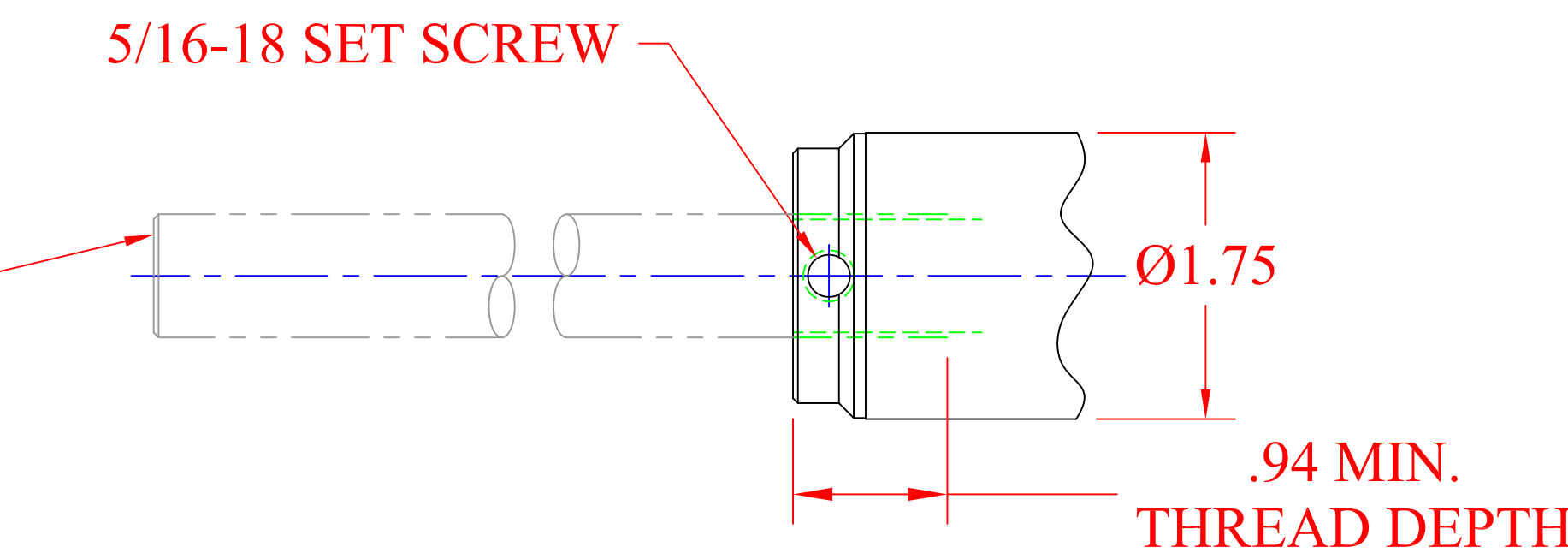
#2
1/2" FLAT END MOUNT



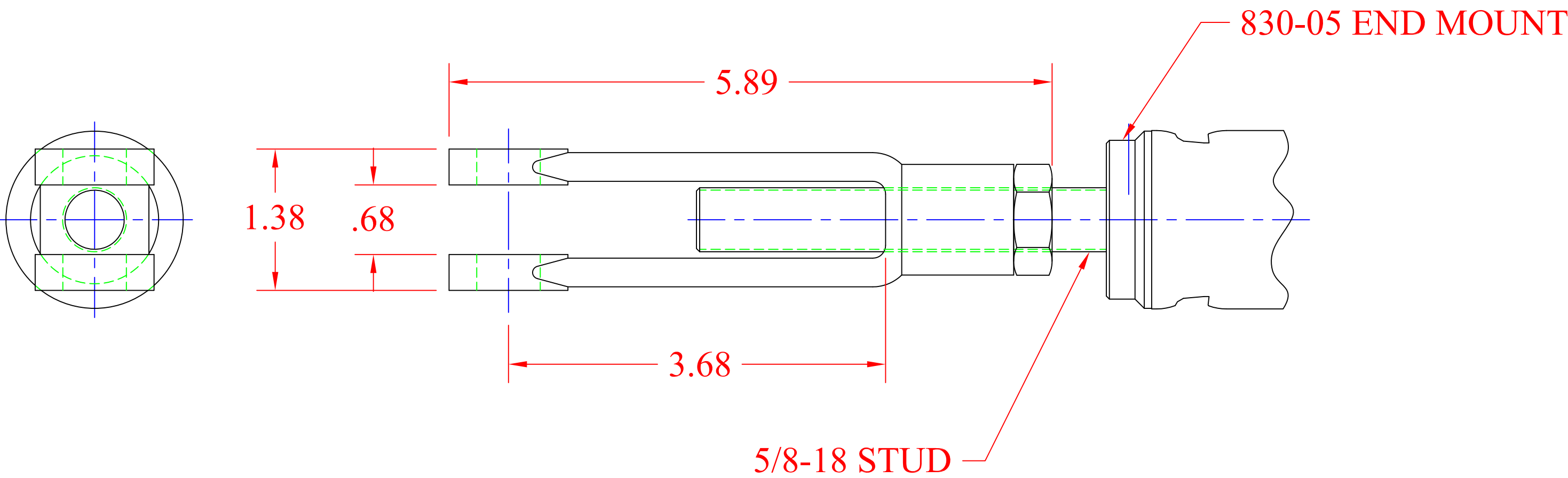
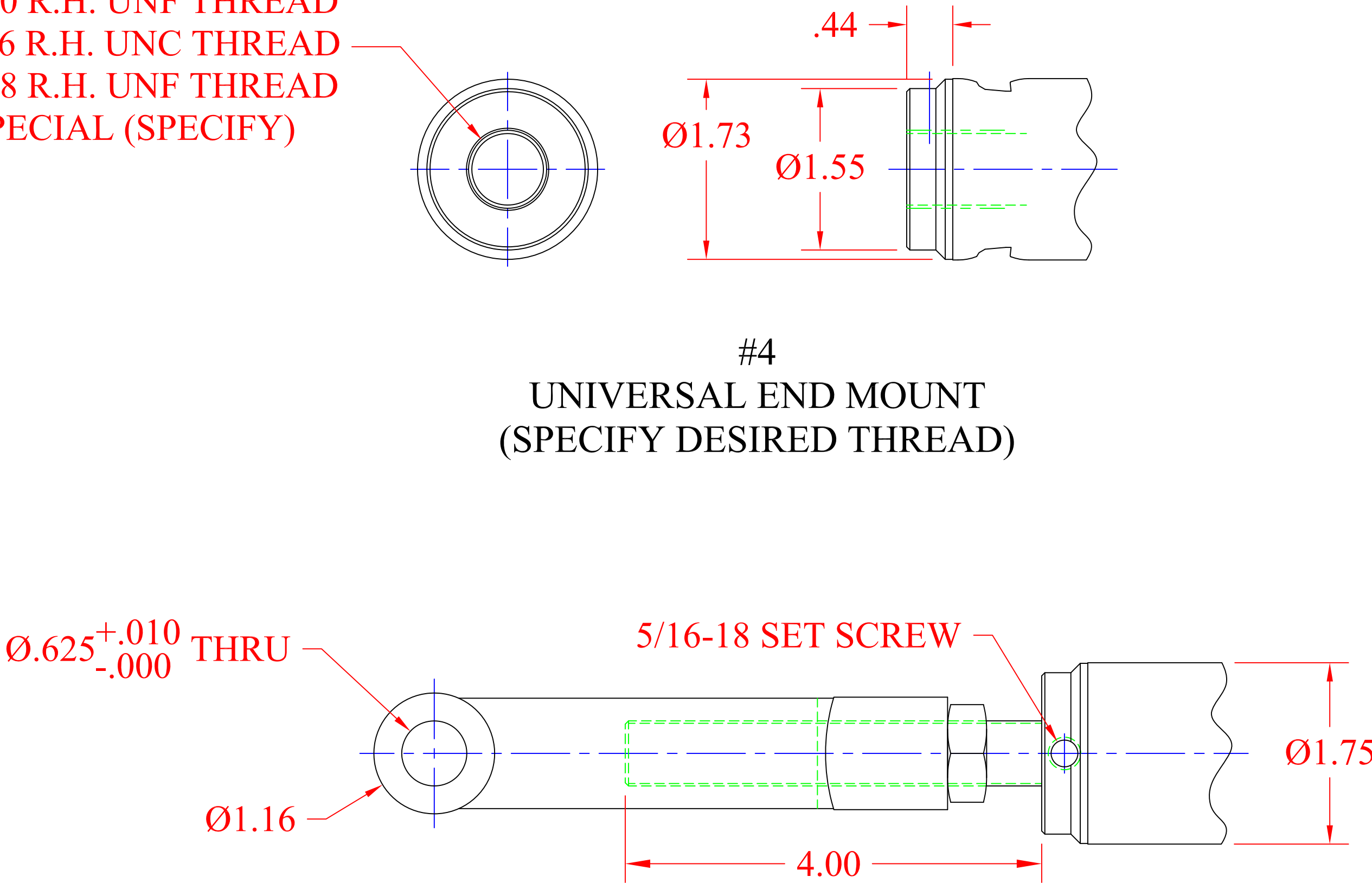
#3
3/4" SWIVEL END MOUNT

S0 ~ 3/4-10 R.H. x 6.5" STUD
S1 ~ 3/4-10 R.H. x 9.5" STUD
S5 ~ 5/8-18 R.H. x 5.0" STUD
S9 ~ SPECIAL (SPECIFY)

T0 ~ 3/4-10 R.H. UNC THREAD
T1 ~ 1/2-20 R.H. UNF THREAD
T3 ~ 3/8-16 R.H. UNC THREAD
T5 ~ 5/8-18 R.H. UNF THREAD
T9 ~ SPECIAL (SPECIFY)



#4
UNIVERSAL END MOUNT
(SPECIFY DESIRED THREAD)

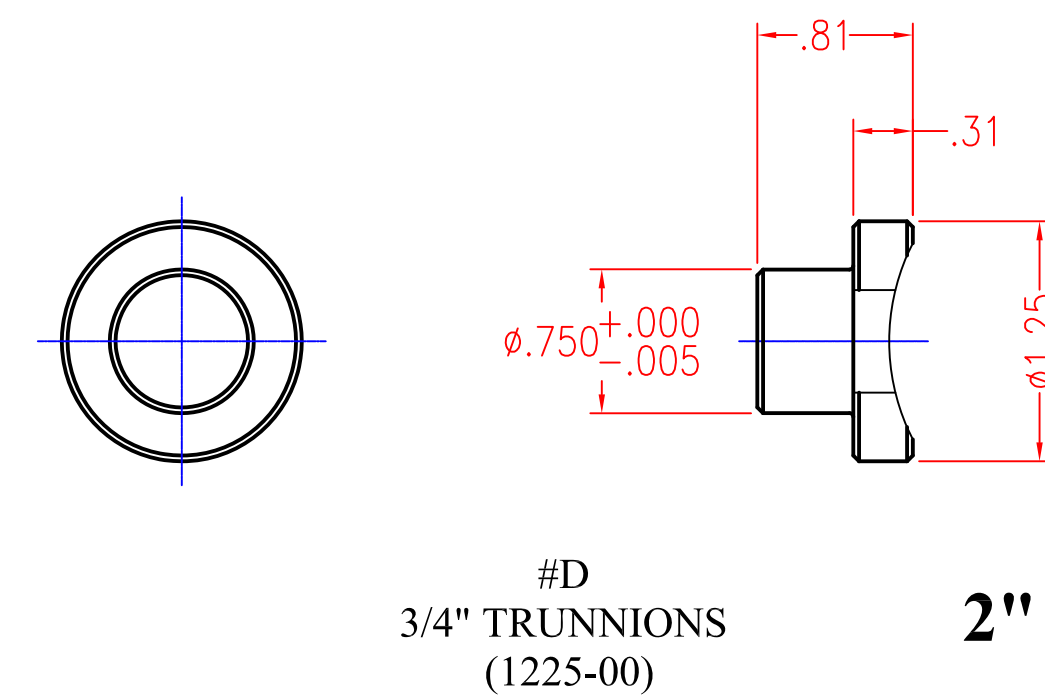
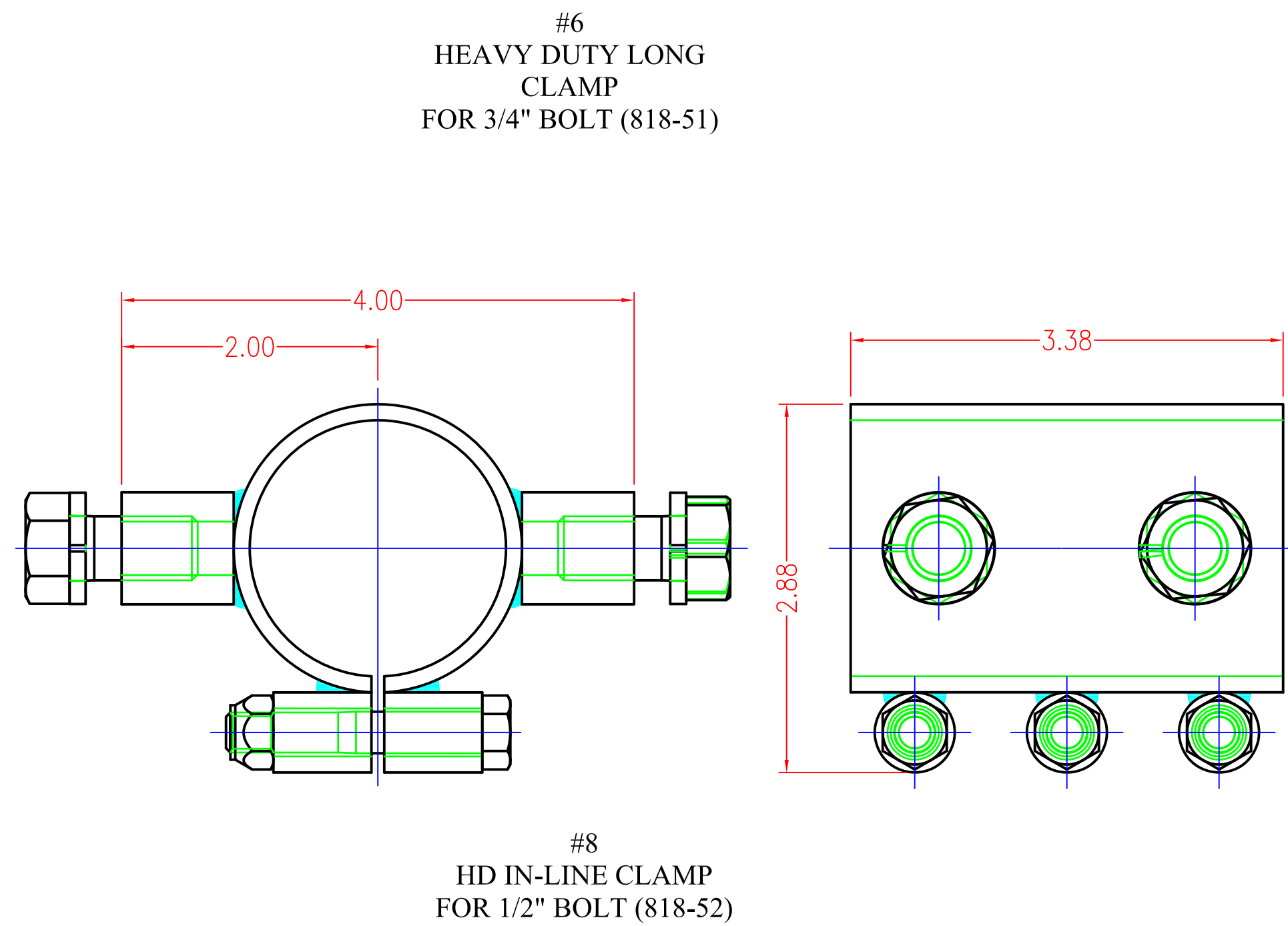
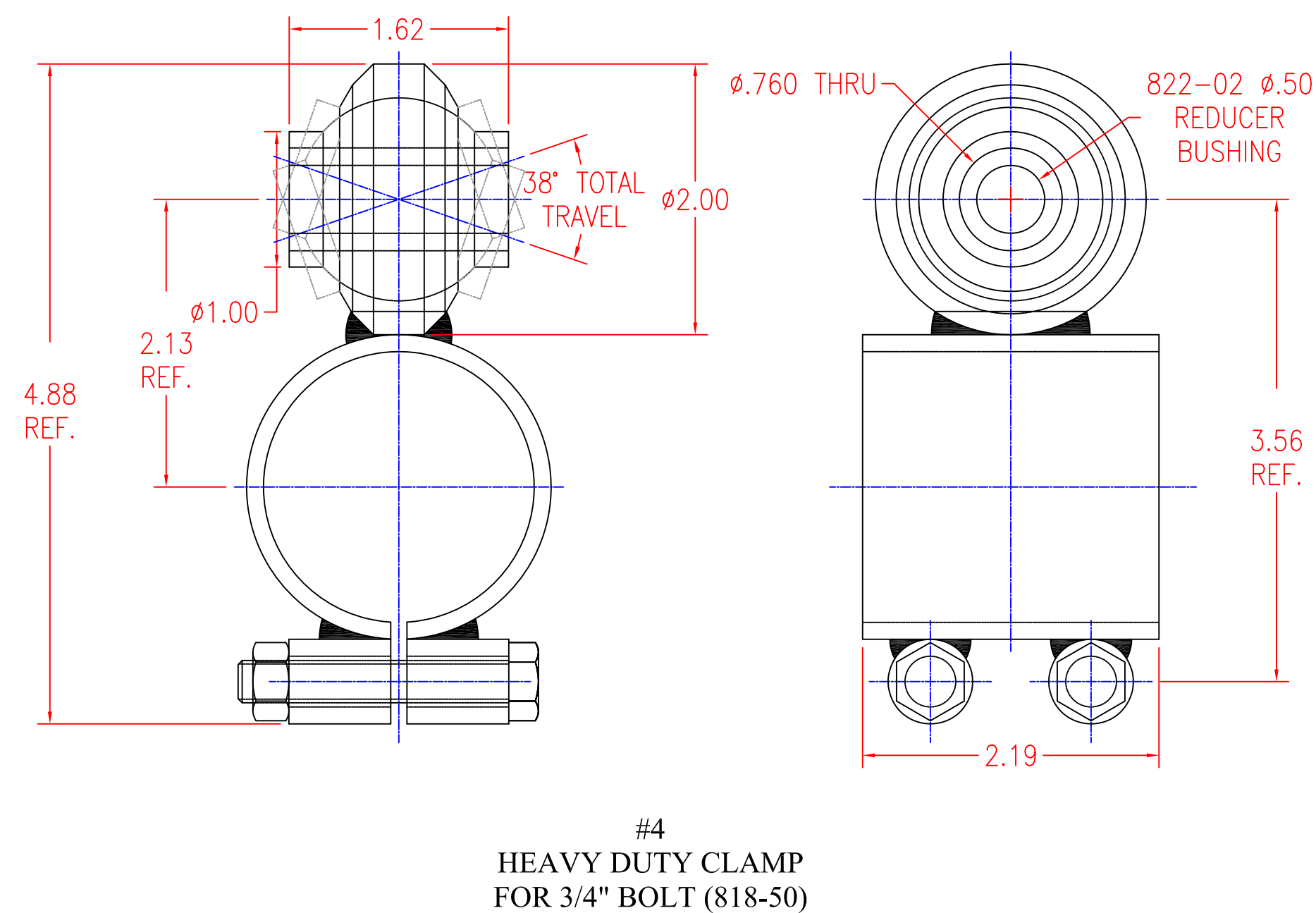
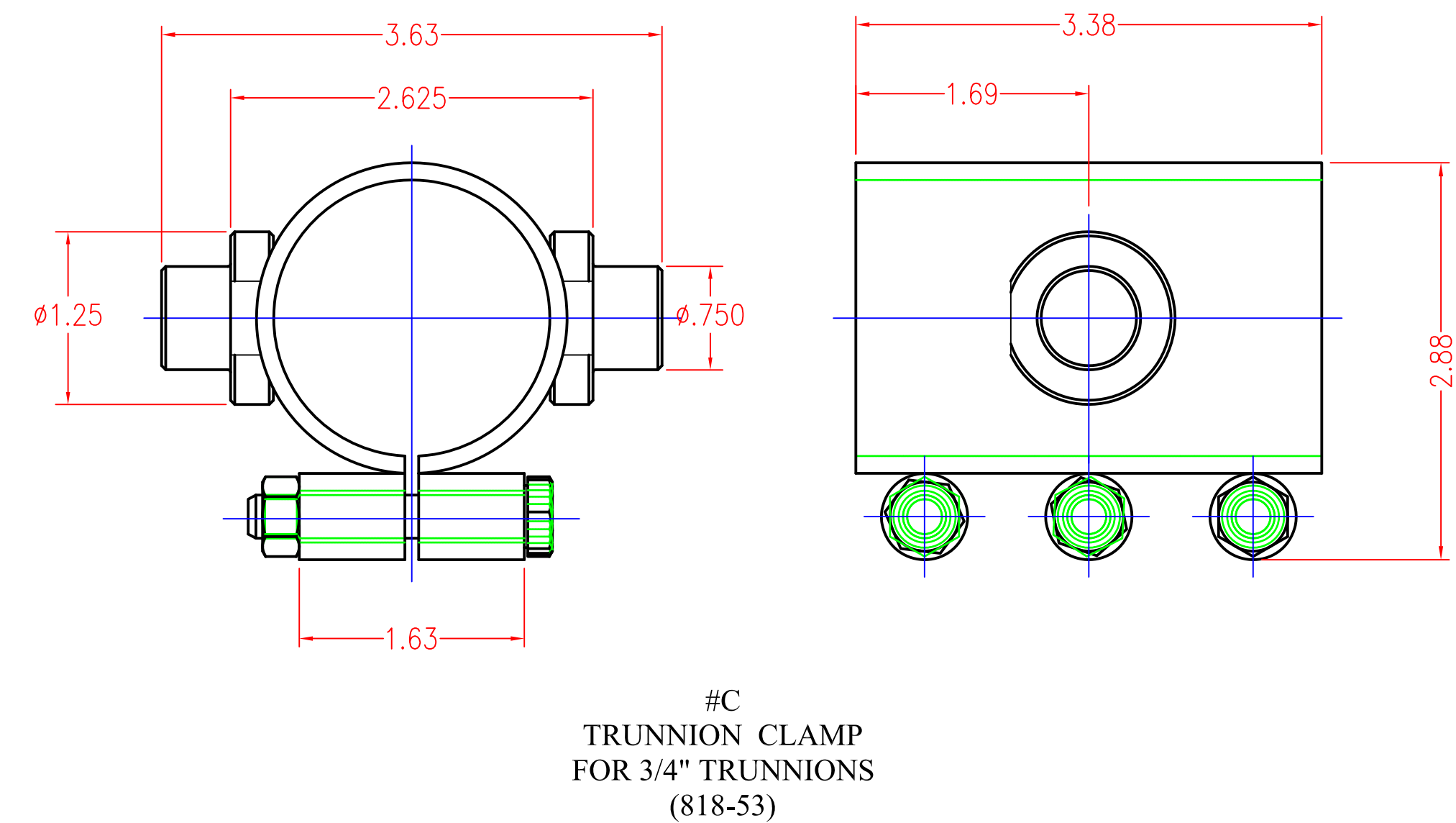
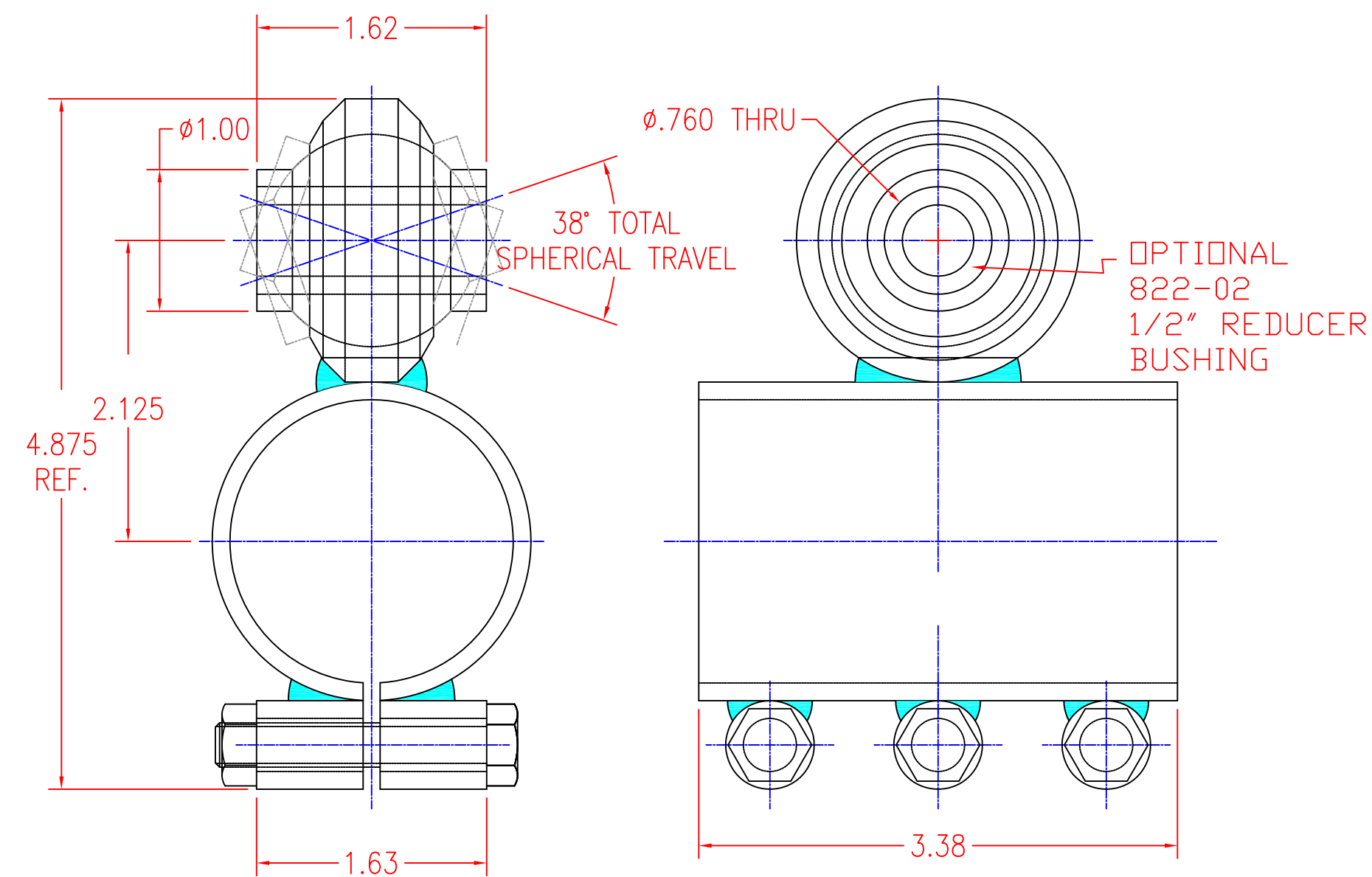
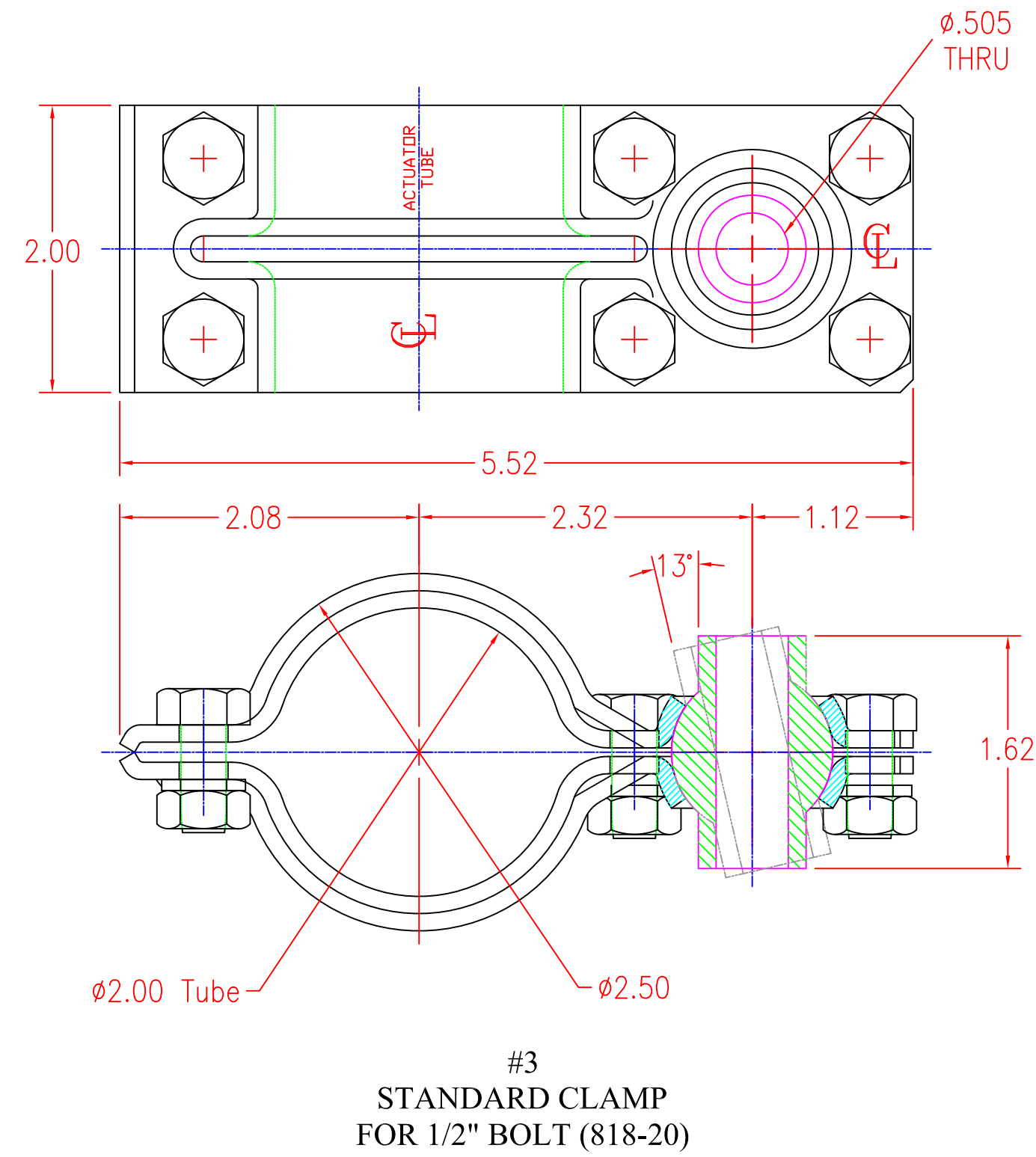
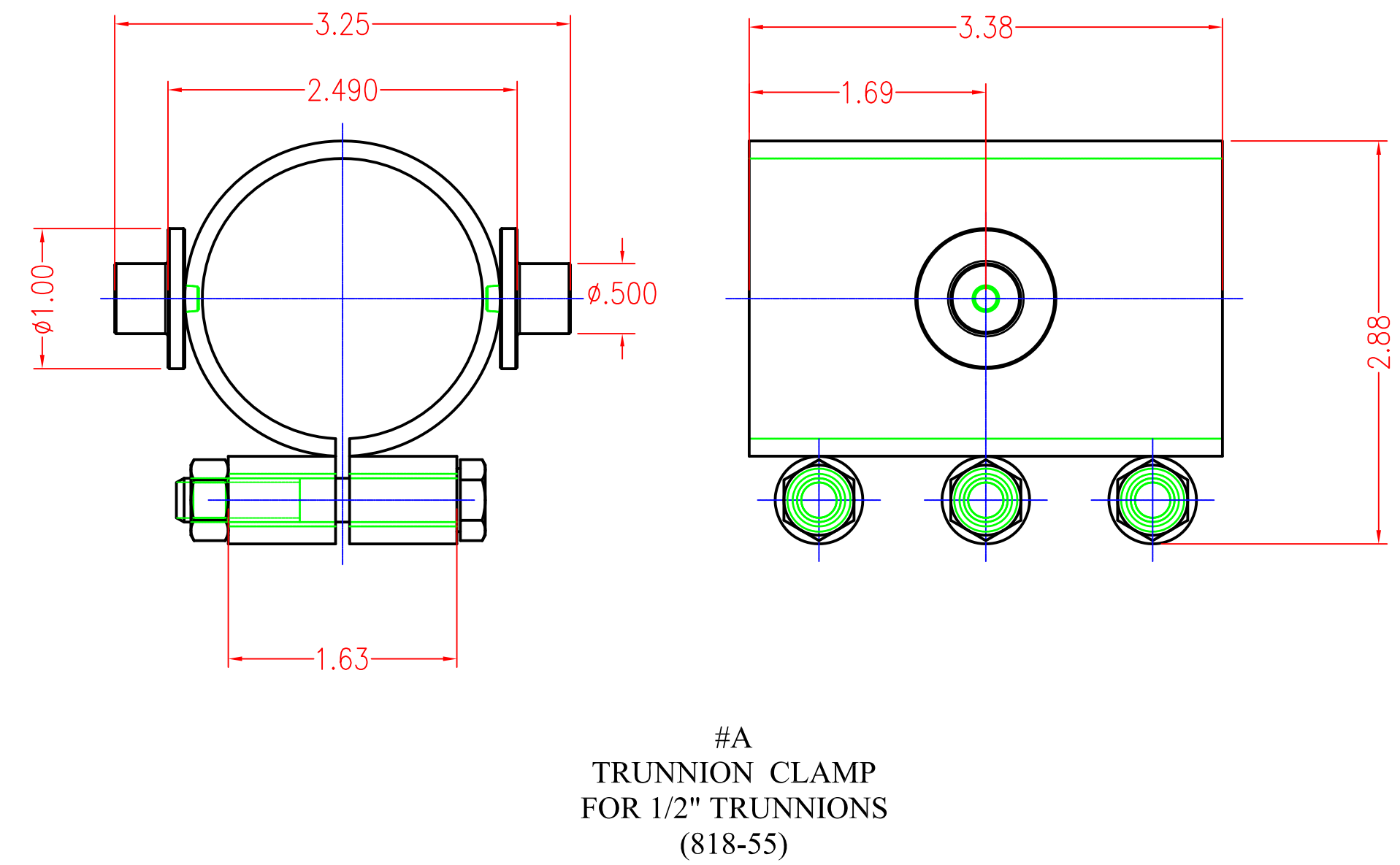
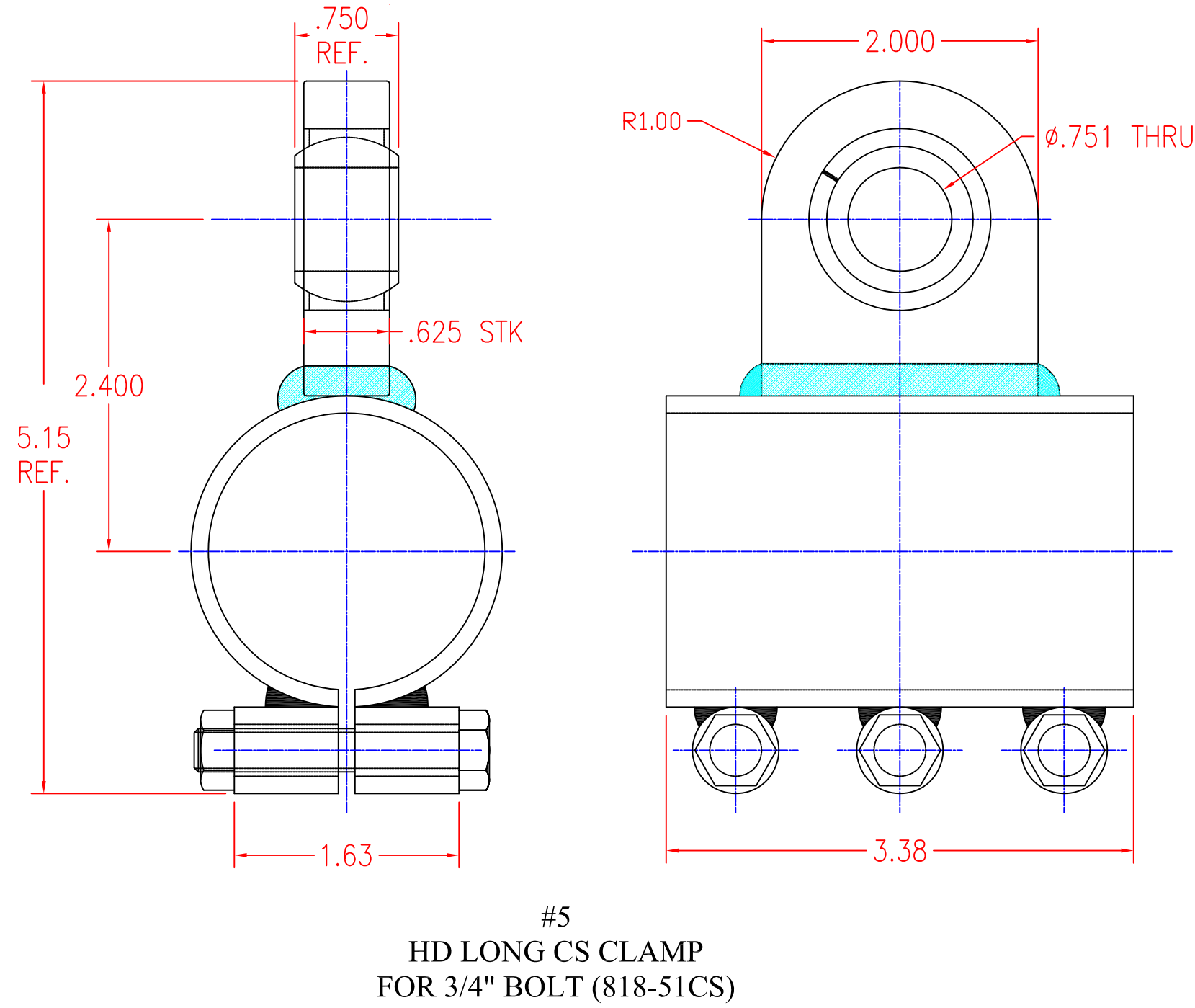
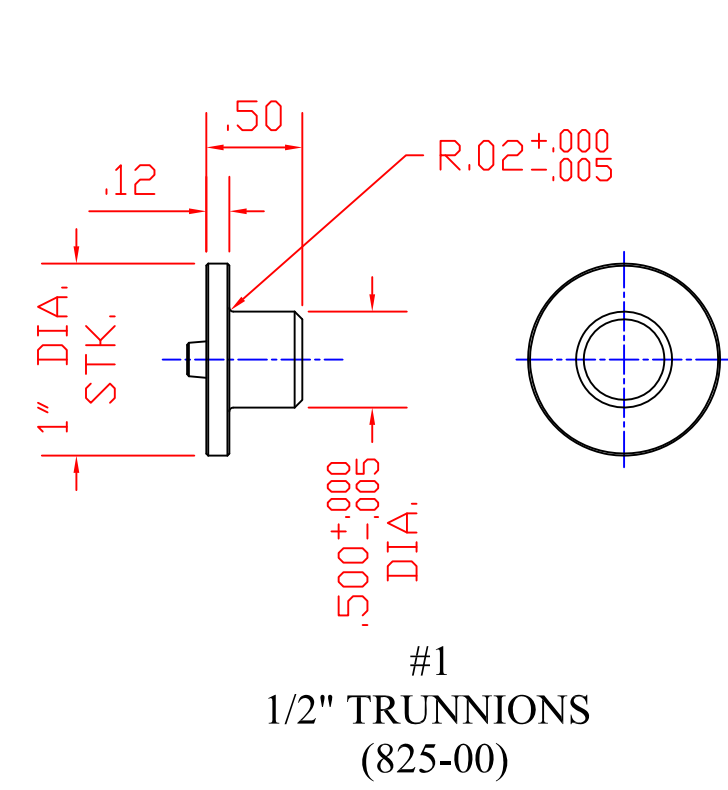


#5
CLEVIS END MOUNT

800/850 SERIES ACTUATOR TUBE END
MOUNTING OPTIONS

VENTURE MFG. CO.

3636 DAYTON PARK DRIVE
DAYTON OHIO 45414
TEL.: (937)233-6832
FAX: (937)233-8485
WEB PAGE: www.venturemfgco.com

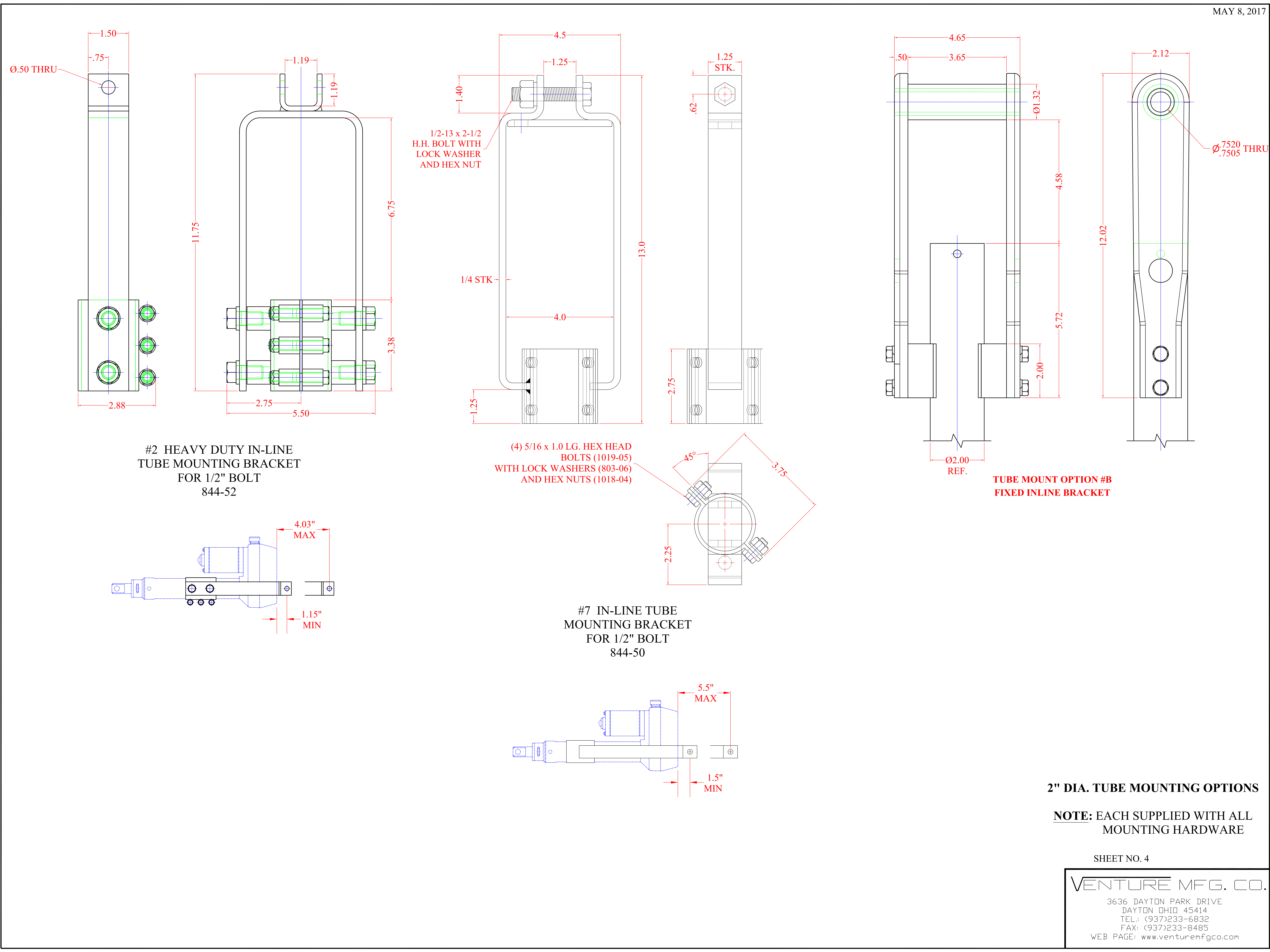


2" DIA. TUBE MOUNTING OPTIONS

NOTE: EACH SUPPLIED WITH ALL MOUNTING HARDWARE

VENTURE MFG. CO.

3636 DAYTON PARK DRIVE
DAYTON OHIO 45414
TEL: (937)233-6832
FAX: (937)233-8485
WEB PAGE: www.venturemfgco.com

[illegible]

MAY 8, 2017

#2 HEAVY DUTY IN-LINE
TUBE MOUNTING BRACKET
FOR 1/2" BOLT
844-52

(4) 5/16 x 1.0 LG. HEX HEAD
BOLTS (1019-05)
WITH LOCK WASHERS (803-06)
AND HEX NUTS (1018-04)

#7 IN-LINE TUBE
MOUNTING BRACKET
FOR 1/2" BOLT
844-50

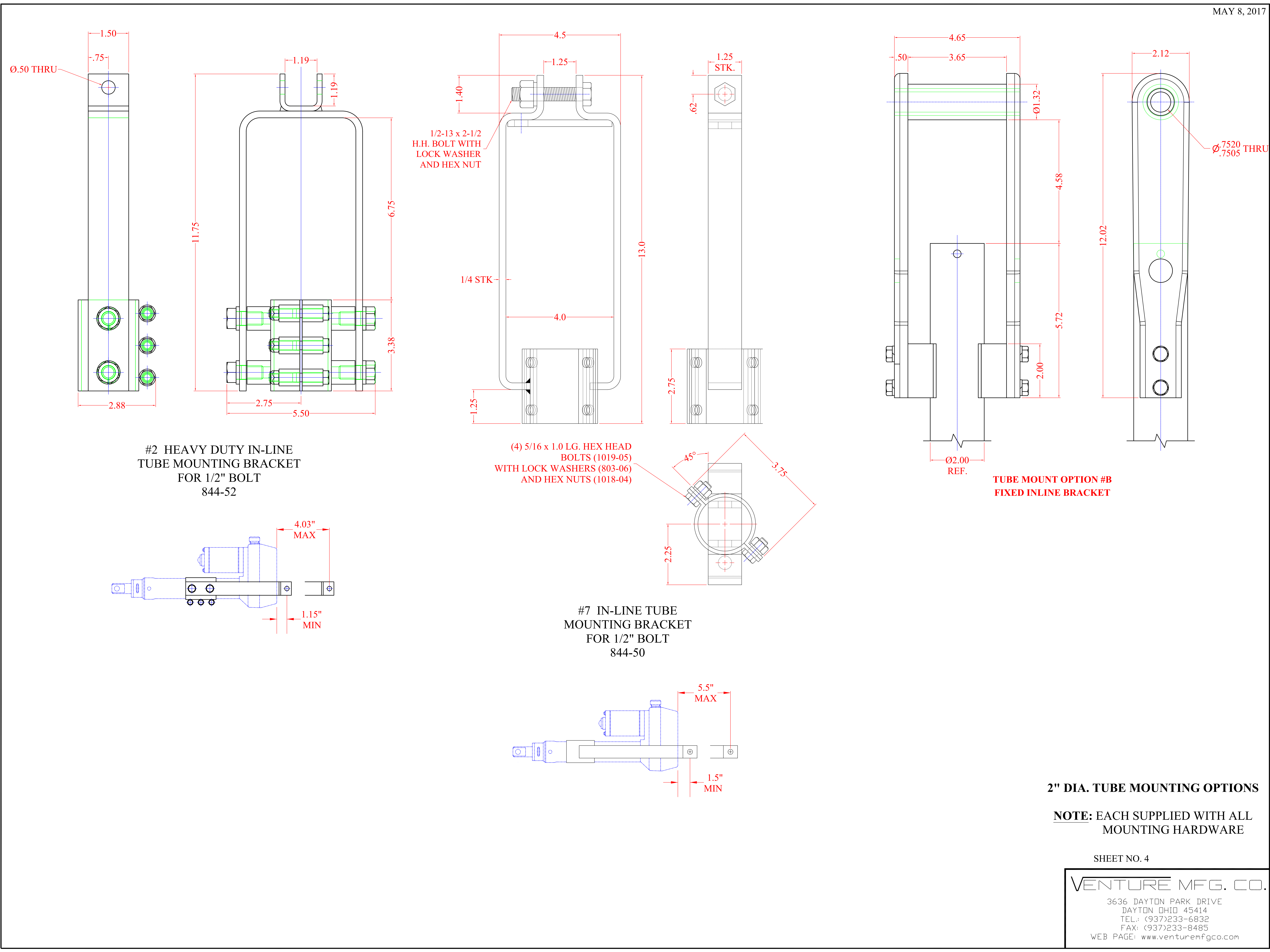
2" DIA. TUBE MOUNTING OPTIONS

NOTE: EACH SUPPLIED WITH ALL
MOUNTING HARDWARE

SHEET NO. 4

VENTURE MFG. CO.

3636 DAYTON PARK DRIVE
DAYTON OHIO 45414
TEL: (937)233-6832
FAX: (937)233-8485
WEB PAGE: www.venturemfgco.com



MAY 8, 2017

**#2 HEAVY DUTY IN-LINE
TUBE MOUNTING BRACKET
FOR 1/2" BOLT
844-52**

**(4) 5/16 x 1.0 LG. HEX HEAD
BOLTS (1019-05)
WITH LOCK WASHERS (803-06)
AND HEX NUTS (1018-04)**

**#7 IN-LINE TUBE
MOUNTING BRACKET
FOR 1/2" BOLT
844-50**

2" DIA. TUBE MOUNTING OPTIONS

NOTE: EACH SUPPLIED WITH ALL
MOUNTING HARDWARE

SHEET NO. 4

VENTURE MFG. CO.

3636 DAYTON PARK DRIVE
DAYTON OHIO 45414
TEL: (937)233-6832
FAX: (937)233-8485
WEB PAGE: www.venturemfgco.com

MAY 8, 2017

#2 HEAVY DUTY IN-LINE
TUBE MOUNTING BRACKET
FOR 1/2" BOLT
844-52

(4) 5/16 x 1.0 LG. HEX HEAD
BOLTS (1019-05)
WITH LOCK WASHERS (803-06)
AND HEX NUTS (1018-04)

#7 IN-LINE TUBE
MOUNTING BRACKET
FOR 1/2" BOLT
844-50

2" DIA. TUBE MOUNTING OPTIONS

NOTE: EACH SUPPLIED WITH ALL
MOUNTING HARDWARE

SHEET NO. 4

VENTURE MFG. CO.

3636 DAYTON PARK DRIVE
DAYTON OHIO 45414
TEL: (937)233-6832
FAX: (937)233-8485
WEB PAGE: www.venturemfgco.com

MAY 8, 2017

#2 HEAVY DUTY IN-LINE
TUBE MOUNTING BRACKET
FOR 1/2" BOLT
844-52

(4) 5/16 x 1.0 LG. HEX HEAD
BOLTS (1019-05)
WITH LOCK WASHERS (803-06)
AND HEX NUTS (1018-04)

#7 IN-LINE TUBE
MOUNTING BRACKET
FOR 1/2" BOLT
844-50

TUBE MOUNT OPTION #B
FIXED INLINE BRACKET

2" DIA. TUBE MOUNTING OPTIONS

NOTE: EACH SUPPLIED WITH ALL
MOUNTING HARDWARE

SHEET NO. 4

VENTURE MFG. CO.

3636 DAYTON PARK DRIVE
DAYTON OHIO 45414
TEL: (937)233-6832
FAX: (937)233-8485
WEB PAGE: www.venturemfgco.com

MAY 8, 2017

#2 HEAVY DUTY IN-LINE
TUBE MOUNTING BRACKET
FOR 1/2" BOLT
844-52

(4) 5/16 x 1.0 LG. HEX HEAD
BOLTS (1019-05)
WITH LOCK WASHERS (803-06)
AND HEX NUTS (1018-04)

#7 IN-LINE TUBE
MOUNTING BRACKET
FOR 1/2" BOLT
844-50

TUBE MOUNT OPTION #B
FIXED INLINE BRACKET

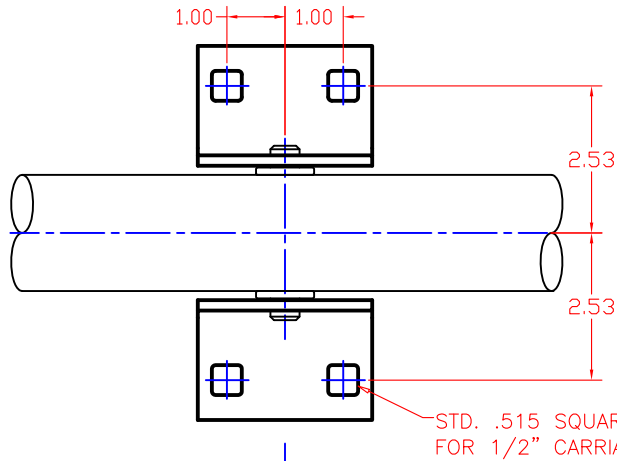
2" DIA. TUBE MOUNTING OPTIONS

NOTE: EACH SUPPLIED WITH ALL
MOUNTING HARDWARE

SHEET NO. 4

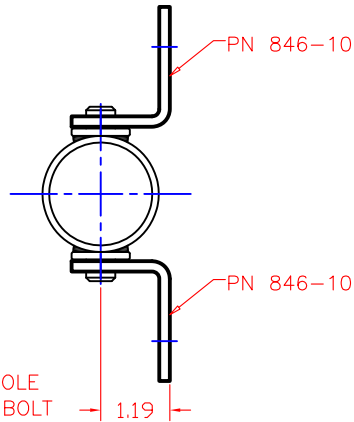
VENTURE MFG. CO.

3636 DAYTON PARK DRIVE
DAYTON OHIO 45414
TEL: (937)233-6832
FAX: (937)233-8485
WEB PAGE: www.venturemfgco.com



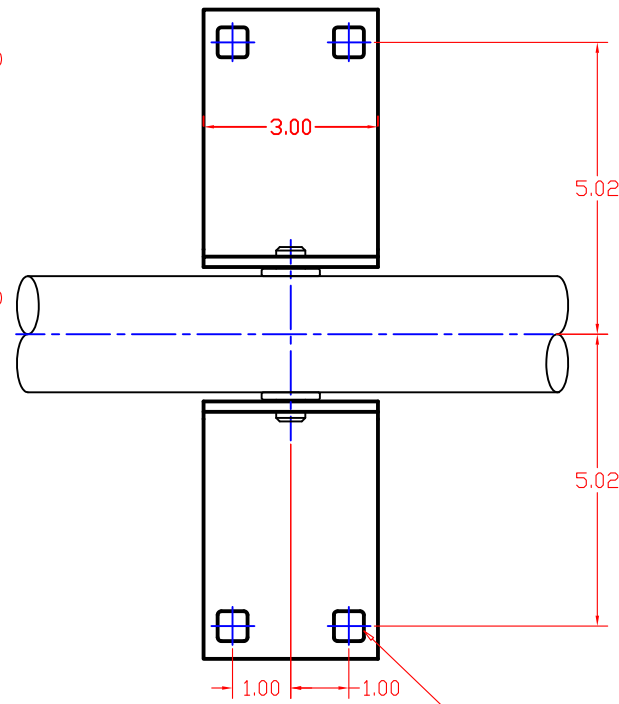
STD. .515 SQUARE HOLE
FOR 1/2" CARRIAGE BOLT

STANDARD MTG. OPTION ~ PN 846-20



PN 846-10

PN 846-10



5.02

5.02

1.00 1.00

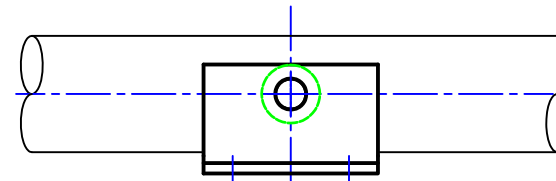
1.37

STD. .515 SQUARE HOLE
FOR 1/2" CARRIAGE BOLT

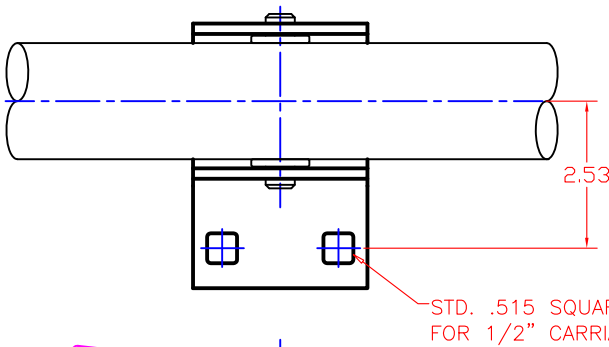
PN 846-11

PN 846-11

0.18



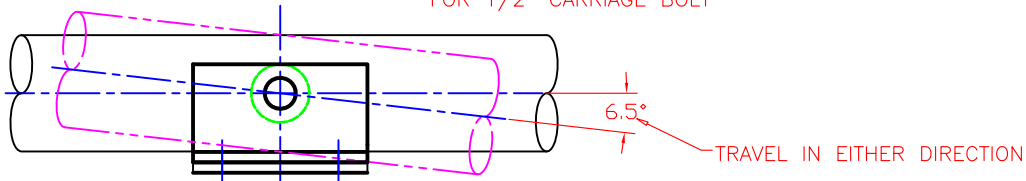
EXTENDED MTG. OPTION ~ PN 846-21



STD. .515 SQUARE HOLE
FOR 1/2" CARRIAGE BOLT

PN 846-10

PN 846-11



6.5°

TRAVEL IN EITHER DIRECTION

SIDE MTG. OPTION ~ PN 846-22

TRUNION MOUNTING OPTIONS

SHEET NO. 5

VENTURE MFG. CO.

3636 DAYTON PARK DRIVE

DAYTON, OHIO 45414

TEL: (937)233-6832

FAX: (937)233-8485

WEB PAGE: www.venturemfgco.com