

SETTING UP YOUR REPLACEMENT RECEIVER



Be sure to read these instructions before disconnecting any cables from your original receiver.

1. Move Cables to Your Replacement Receiver

a. Stacking Method

Use this method if you are able to place your replacement receiver next to your original receiver and you can access and see the back of both receivers. One by one, disconnect each cable from your original receiver and connect it to the same port on your replacement receiver. Once you have connected all the cables, skip to **Step 2**.

Original Receiver

Your wiring set up may be different.



Replacement Receiver



b. Diagram Method

If you can't use the stacking method, disconnect the cable(s) from the back of your original receiver and use the following diagram to reconnect the cable(s) to your replacement receiver. Try to only disconnect cables from your original receiver, and not from the point where the cables connect to the TV, or other components.

i. Connect the **HDMI** cable from the TV to your receiver.

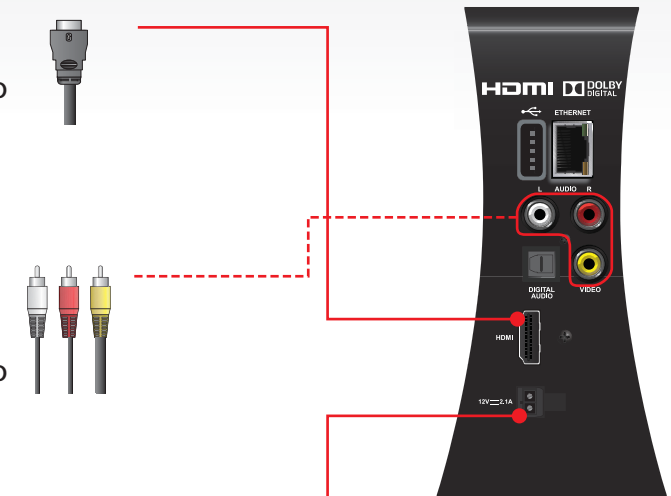


OR

Connect the **Composite RCA** cables from the TV to your receiver.



ii. Connect the replacement **Power adapter**.



iii. Plug your receiver into a wall outlet.



DN005773

SETTING UP YOUR REPLACEMENT RECEIVER



- iv.** Verify the receiver has power.

If you do not see the green power light, press the power button located above the power light.

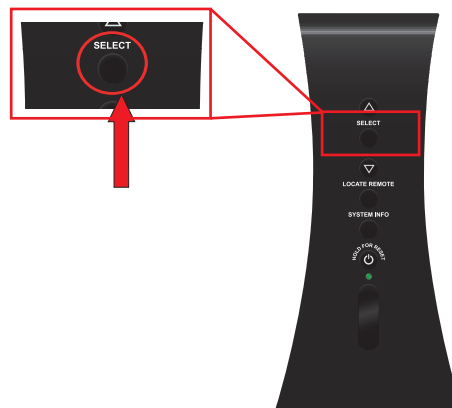


2. Activate the Replacement Receiver

- a.** Turn on your receiver and TV. Confirm that the TV is set to the correct input for watching DISH satellite programming. The WirelessJoey Starting Up screen will display on your TV.

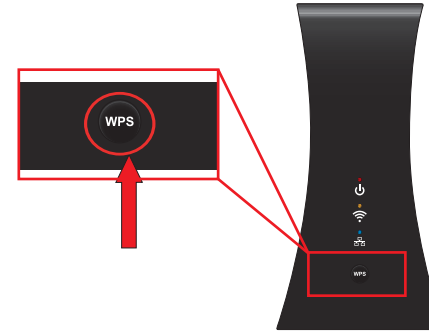


- b.** Press SELECT on the front panel of the Wireless Joey to begin the Receiver Setup Wizard.



- c.** Go to your Wireless Joey Access Point, press and release the WPS button on the front panel to connect to the Wireless Joey.

Note: WPS mode times out after two minutes; steps 2b and 2c may take several tries before the devices connect.



Have your account number or the account phone number, your Wireless Joey CAID number and Smart Card number ready. You will need this information to complete the authorization process.

- d.** Once the devices connect, the Wireless Joey will begin running the installation wizard. Follow all on screen instructions to complete your installation.

Note: If you receive a message that the WiFi signal is weak, try repositioning the Wireless Joey



If the Wireless Joey does not display your satellite programming, use one of the following ways to contact DISH and complete your authorization:

Use online chat support, go to dish.com/chat. Click 'Chat Now' under the Tech Support heading.

OR

Go to mydish.com/myequipment. Register or log in to your DISH account, then authorize your replacement receiver by selecting the 'Activate Receiver' button.

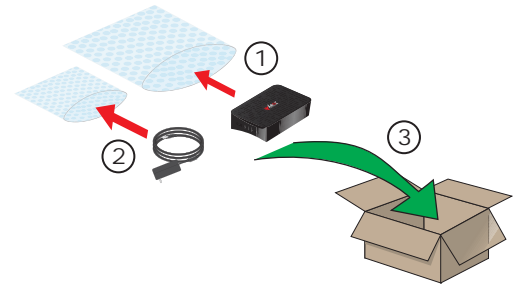
OR

Call DISH at 1-800-333-DISH (3474).

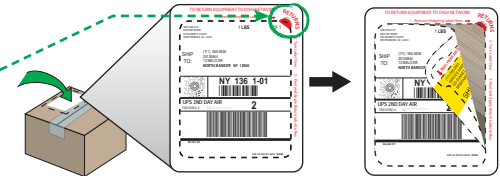
3. Pack and Return the Original Receiver

- a.** Pack your original receiver and power supply using the provided packing and box.

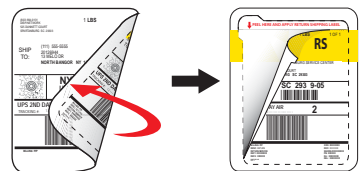
Do not pack any other equipment or attachments (such as your remote control or Wireless Access Point) with your original receiver.



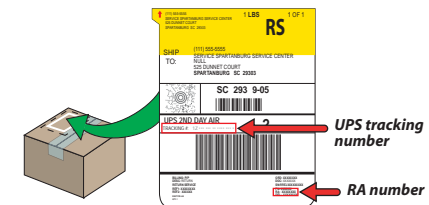
- b.** Locate the original shipping label on the box and remove it using the red pull tab.



- c.** Turn the original shipping label over and peel off the yellow return shipping label to expose the adhesive.



- d.** Apply the yellow return shipping label and seal the box. Copy the RA number and UPS tracking number for your records.



- e.** Return the original receiver at the nearest UPS drop-off location within 15 days. To find drop-off locations nearest you or to schedule a pick-up at your cost, visit ups.com/dropoff.